



**DEPARTMENT OF NATURAL RESOURCES  
STATE OF MICHIGAN  
TIMBER SALE PROSPECTUS #7631**

**SCHEDULED SALE DATE AND TIME:** 3:00 p.m. (local time) on June 4, 2025.

**LOCATION:** ESCANABA MGMT UNIT, 6833 US-2, 41 & M-35, GLADSTONE, MI 49837.

**PROSPECTUS NOTE:** The bidder is advised to inspect the sale area and review the location, estimated volumes, operating costs and contract terms of proposed sales. Please be aware that some landowners may request 60 days or more notice for access across their land.

Notice is hereby given that bids will be received by the Unit Manager, ESCANABA MANAGEMENT UNIT, for certain timber on the following described lands:

**Delayed Mix** (33-021-25) / T35N, R25W, SEC. 7 , SWNW.

T35N, R26W, SEC. 12, S1/2NE, SESW, SE.

T35N, R26W, SEC. 13, NENW, NE.

Menominee County, Advertised Price \$33,312.40, 128.3 Acres, Hardwood, Spruce/Fir/ Tamarack.

SALE NOTE: This sale will require the Purchaser to Haul 300 cubic yards of gravel to access five Payment Units. Gravel is available from a state pit, in close proximity to the sale. A large portion of the sale can be harvested during a dry summer.

**Elwood Creek Divide** (33-022-25) / T35N, R25W, SEC. 7 , SWNW.

T35N, R26W, SEC. 1 , NESE, S1/2SE.

T35N, R26W, SEC. 12, NE.

Menominee County, Advertised Price \$12,343.00, 73.8 Acres, Hardwood, N White Cedar.

SALE NOTE: The best access into Payment Units 1 -3 is through private property from the north. The Purchaser will need to obtain permission. During a dry summer a large portion of Payment Units 1, 3, and 4 could be harvested.

**Very's Beef** (33-023-25) / T35N, R26W, SEC. 13, E1/2NW, W1/2NE, E1/2SW, W1/2SE.

Menominee County, Advertised Price \$7,978.40, 56.8 Acres, Hardwood, Spruce/Fir/ Tamarack.

SALE NOTE: The Purchaser must purchase and install a new culvert and haul some gravel, per Sale Condition 4.1.8. Most of the Payment Units have some lower ground, but a significant amount of the sale could be harvested during a dry summer.

## BID INSTRUCTIONS (VER. 10/10/2022):

### 1. Scheduled Bid Location, Date, and Time (2/11)

Bids must be received by the Unit Manager, ESCANABA OFFICE, 6833 US-2, 41 & M-35, Gladstone, MI 49837, no later than 3:00 p.m. (local time) on June 4, 2025. For further information concerning this sale, contact Daniel Racine at 906-789-8231.

### 2. Bidder's Qualifications (10/22)

If all or part of a timber sale was prepared by a private contractor, the contractor and that contractor's company are not permitted to bid on the timber sale. A person must be 18 years of age or older to purchase timber. Permanent employees of the Department of Natural Resources or members of their immediate household may not bid. Former employees, in the permanent or seasonal class, may not bid until 3 months after the last day of active duty. Bids will not be accepted from individuals or companies appearing on the DNR/FRD No-Bid List. This list contains the names of purchasers who previously failed to execute a contract within 21-days or who have a history of poor performance.

### 3. Preparation of Sealed Bids (5/16)

Bid Forms may be completed online thru Michigan DNR Timber Sale Online Bidding (OLB) at [www.michigan.gov/timberbidding](http://www.michigan.gov/timberbidding) or by completing the hardcopy Bid Form found in the Timber Sale Prospectus. Hardcopy Bid Forms shall be manually signed in ink. Registration in OLB is considered your 'signature' for all bids submitted thru that system. Bid prices must be entered for each species and product in the Bid Price column for all material subject to bidding and all fill-in blanks must be completed. If erasures or other changes appear on the hardcopy Bid Form, each erasure or change must be initialed by the person signing the bid.

### 4. Submission of Sealed Bids (5/16)

Bid forms may be obtained from the Unit Manager or thru OLB. Bids may be submitted hardcopy or thru OLB. All hardcopy bids must be submitted on the bid form and in an envelope clearly identified as described in this section. NOTE: Only one bid form per bid envelope. Sealed bids must be submitted to the Unit office designated in the prospectus and must be submitted at or prior to the time established in the prospectus. The envelope should show on the outside (a) the sale name or number and (b) the date and time of bid opening, as shown in the prospectus. Bids received after the time specified in the sale prospectus are late bids and will be rejected.

It is possible for a bidder to submit multiple bids on a single sale. For example, a bid may be submitted hardcopy and a bid may be submitted thru OLB. Or, two bidders from the same company could both submit bids on the same sale. If this were to happen, the State would accept all bids received and award the contract accordingly. All bidding and contractual requirements would apply to all bids received.

### 5. Public Opening of Sealed Bids (7/16)

If conditions permit, the sealed bids will be publicly opened and posted at the time and place set in the prospectus.

If a bidder, present at a bid opening, has submitted bids on more than one sale, that bidder may withdraw their unopened bid envelopes or announce the withdrawal of their online bid after being declared the successful bidder on one sale.

### 6. Award of Contract (1/11)

Award of the contract will be made to the Bidder whose bid, conforming to the prospectus, is most advantageous to the State of Michigan on the basis of total value at rates bid for the estimated quantities. The State reserves the right to reject any bid or waive any minor irregularity in bids received. A written award mailed (or otherwise furnished) to the successful Bidder shall be deemed to result in a binding contract without further action by either party.

### 7. Down Payment (1/11)

The Bidder to whom award is made must make a down payment within 21 days of the sale award. The amount of the down payment will be calculated as shown in the Bond and Payment Schedule of this prospectus. Only cash may be used to meet this requirement.

### 8. Performance Security (1/11)

As guarantee of faithful performance, a cash bond, certificate of deposit, surety bond or irrevocable letter of credit (LOC) is required within 21 days of the sale award. The amount of the performance security is shown in the Bond and

Payment Schedule of this prospectus. If an LOC or surety is used, the coverage must extend for at least 6 months beyond the contract expiration.

#### 9. Worker's Compensation (10/22)

Purchaser shall obtain worker's compensation insurance to cover claims under Michigan's Worker's Disability Compensation Act of 1969 or similar employee benefit act of any other state applicable to an employee. Verification of Worker's Disability Compensation Act Compliance must be completed and submitted within 21 days of contract award and prior to the issuance of the timber sale contract. In addition, if applicable, Notice of Exclusion or Certificate of Insurance must also be submitted.

#### 10. Timber Sale Contract (10/22)

Additional conditions and requirements common to all timber sales are listed on the timber sale contract (R4031) and are available on line at [www.michigan.gov/timber](http://www.michigan.gov/timber). Contact the Unit Manager for additional information or a sample contract. Within 21 days of the date of the award letter, the bidder must sign the contract and provide the required down payment, performance security, and verification of worker's disability compensation. The down payment and performance security shall be in accordance with the provisions of the timber sale contract, in the sums stated in this prospectus. If these actions are not taken, then the Bidder, the Bidder's corporation, and the corporation's principals may not be permitted to bid on State timber sales for a period of 3 months after the first offense, 6 months after the second offense, and 1 year after the third offense. An offense will only be counted against the Bidder for 5 years. In addition, the Bidder certifies that if awarded this contract, the Bidder will complete the timber sale contract in accordance with its terms and any modifications thereof including requirements to purchase, cut, and remove the included timber by the expiration date.

Payment Unit values in the State Forest Timber Sale Contract are calculated based on the advertised value of the Payment Unit as a percentage of the total advertised value of the contract. The advertised value of each Payment Unit is given in the Description of Timber by Payment Unit table on the Timber Sale Information page. For example, if the value of Payment Unit 1 is advertised as \$1,500 and the total Timber Sale value is advertised as \$10,000, the contract price for Payment Unit 1 will be 15% of the total bid price ( $\$1,500/\$10,000 * 100$ ).

#### 11. Disclaimer of Estimates and Bidder's Warranty of Inspection (10/22)

Before submitting this bid, the Bidder is advised and cautioned to inspect the sale area, review the requirements of the sale contract, and take other steps as may be reasonably necessary to ascertain the location, estimated volumes, construction estimates, and operating costs of the proposed sale. Failure to do so will not relieve the Bidder from responsibility for completing the contract.

The Bidder warrants that this bid is submitted solely on the basis of the Bidder's examination and inspection of the quality and quantity of the timber offered for sale and the Bidder's opinion of the value thereof and the costs of recovery. No reliance should be placed on the State of Michigan's estimates of timber quality, quantity or costs of recovery. Bidder further acknowledges that the State of Michigan: (i) expressly disclaims any warranty of fitness of timber for any purpose; (ii) offers this timber as is without any warranty of quality (merchantability) or quantity and (iii) expressly disclaims any warranty as to the quantity or quality of timber sold.

#### 12. Certification and Chain-of-Custody (10/22)

Unless otherwise indicated in the contract under section 7 – Other Conditions of the Sale Specific Conditions & Requirements, the area encompassed by this timber sale is certified to the standards of the Forest Stewardship Council (FSC) - Certificate #SCS-FM/COC-00090N and the Sustainable Forestry Initiative (SFI) - Certificate #NSF-SFIS-5Y031-SF5. Forest products from this sale may be delivered to the mill as "FSC 100% and / or SFI certified" as long as the contractor hauling the forest products is chain-of-custody (COC) certified or covered under a COC certificate from the destination mill. The purchaser is responsible for maintaining COC after leaving the sale area.

#### 13. Good Neighbor Authority (GNA) Requirements (10/22)

If the name of this timber sales contains the acronym GNA, it is authorized by the Good Neighbor Authority (GNA) and covered by various agreements between the U.S. Forest Service and the State. The timber sale occurs on federal land and the following conditions apply:

GNA contracts on US Forest Service land will not be awarded to purchasers on the Federal list of excluded parties. The System for Award Management (SAM) will be checked for active excluded parties prior to award of contract. In

addition, the Bidder to whom award is made must complete an Assurance Regarding Felony Conviction or Tax Delinquent Status for Corporate Applicants (AD-3031).

14. Good Neighbor Authority (GNA) Requirements, con't (10/22)

Bidder certifies, by signing this bid form, that to the best of Bidder's knowledge that the following representations are accurate and complete.

- a. That the Bidder and its principals are not presently debarred, suspended, proposed for debarment, declared ineligible, or voluntary excluded from timber sales (covered transactions) by any Federal department or agency.
- b. That the Bidder and its principals have not within a 3-year period preceding this bid been convicted of or had a civil judgment rendered against them for commission of fraud or a criminal offense in connection with obtaining , attempting to obtain, or performing a public (Federal, State, or local) transaction or contract under a public transaction; violation of Federal or State antitrust statutes or commission of embezzlement, theft, forgery, bribery, falsification or destruction of records, making false statements, or receiving stolen property.
- c. That the Bidder and its principals are not presently indicted for or otherwise criminally or civilly charged by a governmental entity (Federal, State, or local) with commission of any of the offenses enumerated in paragraph b of this certification.
- d. That the Bidder and its principals have not within a 3-year period preceding this bid had one or more public transactions (Federal, State, or local) terminated for breach or default of a timber or forest product contract.

Bidders that cannot certify this requirement, in whole or in part, shall submit an explanation with their bid.

Scott Bowen  
Director

## TIMBER SALE INFORMATION

### Delayed Mix (33-021-25)

T35N, R25W, SEC. 7; T35N, R26W, SEC. 12; T35N, R26W, SEC. 13.  
Menominee County (Advertised Price \$33,312.40)

**SALE NOTE:** This sale will require the Purchaser to Haul 300 cubic yards of gravel to access five Payment Units. Gravel is available from a state pit, in close proximity to the sale. A large portion of the sale can be harvested during a dry summer.

A timber sale contract for this lump sum, sealed bid timber sale will be awarded to the responsible bidder offering the highest sealed bid price. All units of volume listed below were estimated using the Inventory Manager computer program and the new Michigan taper model. Bids must be at or above the following advertised price for each product and species:

<u>PRODUCTS &amp; SPECIES</u>	<u>ESTIMATED UNITS*</u>		<u>ADVERTISED PRICE</u>
Sawtimber			
Basswood	19.6	MBF	\$ 62.00 / MBF
Paper Birch	2.3	MBF	\$ 97.00 / MBF
Red Maple	6.8	MBF	\$ 109.00 / MBF
Sugar Maple	8.0	MBF	\$ 212.00 / MBF
Pulpwood			
Balsam Fir	140	Cords	\$ 8.00 / Cord
Mixed Aspen	416	Cords	\$ 26.90 / Cord
Mixed Hardwood	681	Cords	\$ 16.40 / Cord
Mixed Spruce	137	Cords	\$ 13.60 / Cord
N. White Cedar	89	Cords	\$ 6.10 / Cord
Tamarack	320	Cords	\$ 11.10 / Cord

\* The total volume is statistically estimated within plus (+) or minus (-) 10.51 percent. There are an estimated 2,293 cords on this timber sale, plus or minus 241 cords at the 95% confidence level. The estimated units are final and not subject to adjustment. Prospective bidders are urged to examine this timber and to make their own estimates of quantity and quality.

### **BOND AND PAYMENT SCHEDULE:**

1. A bond in the amount of \$1,666.00 to insure faithful performance of the conditions of the contract will be deposited by the successful bidder within 21 days of the sale award.
2. Cutting in any sale or unit without the required advance payment would be considered a trespass.
3. Total payment must be paid in advance or according to the following schedule:
  - (a) Ten percent (10%) of the sale value must be paid within 21 days of the sale award.
  - (b) The 10% down payment will be credited towards the first unit cut.

(c) Payment for each of the following units must be made before cutting begins in that unit:

<u>PAYMENT UNIT NUMBER</u>	<u>PERCENT OF TOTAL SALE VALUE</u>
01	8.3%
02	11.3%
03	12.9%
04	7.2%
05	12.0%
06	4.9%
07	3.8%
08	15.7%
09	23.9%

4. If no cutting takes place, the 10% down payment will not be refunded.
5. Operations on the contract issued will terminate on 09/30/2029.

### **SALE STATISTICS**

Volumes were calculated in cubic feet using the Michigan taper model. Cubic foot volume includes all wood inside bark for the product indicated. For display purposes, cubic feet were converted to cords and MBF using a simple conversion factor, e.g. 79 cubic feet per cord and 185 cubic feet per MBF. The cubic foot volumes are precise; the cords and MBF volumes are not. Cubic foot volume cannot be directly converted to cords or boards with precision.

SALE VOLUMES

The total estimated sale volume may not equal the sum of the species/products due to the nature of statistical calculations associated with double sampling methodology.

VOLUME			STATISTICAL RANGE IN CORDS	
TOTAL CUBIC FEET	TOTAL CORDS	PERCENT ERROR	MINIMUM	MAXIMUM
181,177	2,293	10.51%	2,052	2,535

VDU VOLUMES

A VDU is a Volume Determination Unit. Volumes and their associated statistics are calculated at the VDU level and summarized to the sale level. There is often a one to one relationship between a VDU and a Payment Unit, but not always, depending on the cruise design. Refer to the VDU TO PAYMENT UNIT table.

	VOLUME			RANGE IN CORDS	
VDU	TOTAL CUBIC FEET	TOTAL CORDS	PERCENT ERROR	MINIMUM	MAXIMUM
9	18,884	239	34.51%	157	322
10	24,869	315	26.21%	232	397
11	11,128	141	42.93%	80	201
16	14,445	183	23.71%	139	226
18	48,500	614	19.31%	495	732
21	47,084	596	26.00%	441	751
24	16,268	206	27.59%	149	263
TOTAL:	181,177	2,293		1,694	2,892

VDU TO PAYMENT UNIT

When a VDU is associated with more than one Payment Unit (PU), the VDU volumes are assigned to the PU based on acres of the VDU within the PU.

VDU	VDU ACRES	PU	PU ACRES
9	17.5	3	17.5
10	31.4	1	13.1
10	31.4	2	18.3
11	7.7	4	7.7
16	5.3	6	5.3
18	26.7	5	26.7
21	31.8	8	12.6
21	31.8	9	19.2
24	7.9	7	7.9
TOTAL:	191.5		128.3

**DESCRIPTION OF TIMBER BY PAYMENT UNIT (PU)**

PU	MARKET GROUP	PRODUCT	QUANTITY	UNIT	ACRES	ADVERTISE PRICE
1	Basswood	Sawtimber	8.2	MBF	13.1	\$2,756.10
	Paper Birch		0.7	MBF		
	Red Maple		1.0	MBF		
	Sugar Maple		1.7	MBF		
	Balsam Fir	Pulpwood	3	Cords		
	Mixed Hardwood		102	Cords		
	<i>Basswood</i>		19	<i>Cords</i>		
	<i>Black Ash</i>		2	<i>Cords</i>		
	<i>Green Ash</i>		2	<i>Cords</i>		
	<i>Ironwood</i>		1	<i>Cords</i>		
	<i>Paper Birch</i>		3	<i>Cords</i>		
	<i>Red Maple</i>		13	<i>Cords</i>		
	<i>Sugar Maple</i>		46	<i>Cords</i>		
	<i>White Ash</i>		16	<i>Cords</i>		
	Mixed Spruce		1	Cords		
	<i>White Spruce</i>		1	<i>Cords</i>		
2	Basswood	Sawtimber	11.4	MBF	18.3	\$3,772.30
	Paper Birch		0.9	MBF		
	Red Maple		1.4	MBF		
	Sugar Maple		2.4	MBF		
	Balsam Fir	Pulpwood	5	Cords		
	Mixed Hardwood		138	Cords		
	<i>Basswood</i>		26	<i>Cords</i>		
	<i>Black Ash</i>		2	<i>Cords</i>		
	<i>Green Ash</i>		3	<i>Cords</i>		
	<i>Ironwood</i>		1	<i>Cords</i>		
	<i>Paper Birch</i>		3	<i>Cords</i>		
	<i>Red Maple</i>		17	<i>Cords</i>		
	<i>Sugar Maple</i>		64	<i>Cords</i>		
	<i>White Ash</i>		22	<i>Cords</i>		
	Mixed Spruce		1	Cords		
	<i>White Spruce</i>		1	<i>Cords</i>		
3	Paper Birch	Sawtimber	0.7	MBF	17.5	\$4,290.00
	Red Maple		2.0	MBF		
	Sugar Maple		3.9	MBF		
	Balsam Fir	Pulpwood	63	Cords		
	Mixed Aspen		29	Cords		
	<i>B. T. Aspen</i>		10	<i>Cords</i>		
	<i>Quaking Aspen</i>		19	<i>Cords</i>		
	Mixed Hardwood		103	Cords		
	<i>Balsam Poplar</i>		2	<i>Cords</i>		
	<i>Basswood</i>		1	<i>Cords</i>		
	<i>Black Ash</i>		10	<i>Cords</i>		
	<i>Green Ash</i>		33	<i>Cords</i>		
	<i>Paper Birch</i>		16	<i>Cords</i>		
	<i>Red Maple</i>		16	<i>Cords</i>		
	<i>Sugar Maple</i>		25	<i>Cords</i>		
	Mixed Spruce		15	Cords		
	<i>Black Spruce</i>		5	<i>Cords</i>		
	<i>White Spruce</i>		10	<i>Cords</i>		
4	Red Maple	Sawtimber	2.4	MBF	7.7	\$2,410.80
	Balsam Fir	Pulpwood	5	Cords		
	Mixed Hardwood		117	Cords		
	<i>Basswood</i>		5	<i>Cords</i>		
	<i>Black Ash</i>		55	<i>Cords</i>		
	<i>Paper Birch</i>		28	<i>Cords</i>		

## DESCRIPTION OF TIMBER BY PAYMENT UNIT (PU), CON'T

PU	MARKET GROUP	PRODUCT	QUANTITY	UNIT	ACRES	ADVERTISE PRICE
4 con't	<i>Red Maple</i> <i>Sugar Maple</i> <i>Yellow Birch</i> Mixed Spruce <i>Black Spruce</i>	<i>Pulpwood</i>	16 8 5 14 14	<i>Cords</i> <i>Cords</i> <i>Cords</i> Cords <i>Cords</i>		
5	Balsam Fir Mixed Aspen <i>B. T. Aspen</i> <i>Quaking Aspen</i> Mixed Hardwood <i>Balsam Poplar</i> <i>Black Ash</i> <i>Green Ash</i> <i>Paper Birch</i> <i>Red Maple</i> Mixed Spruce <i>Black Spruce</i> Tamarack	Pulpwood	2 7 2 5 53 16 9 3 22 3 70 70 178	Cords Cords <i>Cords</i> <i>Cords</i> Cords <i>Cords</i> <i>Cords</i> <i>Cords</i> <i>Cords</i> <i>Cords</i> Cords <i>Cords</i> Cords	26.7	\$4,001.30
6	Mixed Hardwood <i>Paper Birch</i> Mixed Spruce <i>Black Spruce</i> N. White Cedar Tamarack	Pulpwood	8 8 8 8 89 78	Cords <i>Cords</i> Cords <i>Cords</i> Cords Cords	5.3	\$1,648.70
7	Balsam Fir Mixed Aspen <i>B. T. Aspen</i> Mixed Hardwood <i>American Elm</i> <i>Black Ash</i> <i>Paper Birch</i> <i>Red Maple</i> Mixed Spruce <i>Black Spruce</i> Tamarack	Pulpwood	2 5 5 23 1 4 13 5 2 2 64	Cords Cords <i>Cords</i> Cords <i>Cords</i> <i>Cords</i> <i>Cords</i> <i>Cords</i> Cords <i>Cords</i> Cords	7.9	\$1,265.30
8	Balsam Fir Mixed Aspen <i>B. T. Aspen</i> <i>Quaking Aspen</i> Mixed Hardwood <i>Balsam Poplar</i> <i>Black Ash</i> <i>Black Cherry</i> <i>Green Ash</i> <i>Paper Birch</i> <i>Red Maple</i> <i>Sugar Maple</i> <i>White Ash</i> Mixed Spruce <i>White Spruce</i>	Pulpwood	24 149 27 122 55 21 1 1 2 1 2 2 25 10 10	Cords Cords <i>Cords</i> <i>Cords</i> Cords <i>Cords</i> <i>Cords</i> <i>Cords</i> <i>Cords</i> <i>Cords</i> <i>Cords</i> <i>Cords</i> <i>Cords</i> Cords <i>Cords</i>	12.6	\$5,238.10
9	Balsam Fir Mixed Aspen <i>B. T. Aspen</i> <i>Quaking Aspen</i> Mixed Hardwood <i>Balsam Poplar</i>	Pulpwood	36 226 40 186 82 33	Cords Cords <i>Cords</i> <i>Cords</i> Cords <i>Cords</i>	19.2	\$7,929.80



DESCRIPTION OF TIMBER BY PAYMENT UNIT (PU), CON'T

PU	MARKET GROUP	PRODUCT	QUANTITY	UNIT	ACRES	ADVERTISE PRICE
9 con't	Black Ash	Pulpwood	1	Cords		
	Black Cherry		1	Cords		
	Green Ash		3	Cords		
	Paper Birch		1	Cords		
	Red Maple		3	Cords		
	Sugar Maple		3	Cords		
	White Ash		37	Cords		
	Mixed Spruce		16	Cords		
	White Spruce		16	Cords		
TOTAL:			36.7	MBF		
TOTAL:			1,783	Cords		

## **Sale Specific Conditions & Requirements**

**Sale Name: Delayed Mix**

**Sale Number: 33-021-25 Seq#: 1**

### **1 - Sale Area**

#### **1.2 - Boundaries**

##### **1.2.1 - Painted Boundaries (9/19)**

The sale boundary and Payment Unit boundaries are marked and identified by blue, red and yellow paint. Exterior sale boundary lines against private property are marked with blue paint. Exterior sale boundary lines against state are marked with red paint. Interior Payment Unit boundaries are marked with yellow paint. Retention patches are marked with red paint; no harvesting activities may occur within these areas. The painted boundary line trees are not Included Timber and are to be protected unless marked with orange paint. Yellow painted trees designating an interior Payment Unit boundary are only to be cut when all surrounding Payment Units have been paid for.

### **2 - Timber Specifications**

#### **2.1 - Included Timber**

##### **2.1.1 - Clearcut Unit(s) with Unmerchantable Trees (6/14)**

Within Payment Unit(s) 3-9, cut all trees that are three (3) inches or more at DBH, with the following exceptions:

Within Payment Unit 3, do not cut cedar, white pine or beech.

Within Payment Unit 4, do not cut cedar or hemlock.

Within Payment Units 5 and 7, do not cut cedar.

##### **2.1.3 - Cut Tree Marked Unit(s) (12/08)**

Within Payment Unit(s) 1 and 2, all trees are designated for cutting when marked with orange paint above and below stump height, regardless of merchantability. Except, do not cut cedar marked with orange paint.

##### **2.1.9 - Harvest Exception (12/24)**

Do not cut any cedar trees within Payment Units 4, 5, and 7, other than those that are necessary to remove in order to operate within the Sale Area. Every effort must be made to preserve the existing cedar and to leave an intact stand upon sale completion. All cut cedar shall be piled separately by product and scaled in the woods, unless other scaling arrangements are agreed to by the Unit Manager or his/her representative. Stumpage price for cedar shall be \$30.00 per cord.

#### **2.2 - Utilization**

##### **2.2.4 - Skidding length (2/14)**

Skidding of unlimbed tops or lengths over 17 feet is not permissible within Payment Units 1 and 2.

### **3 - Payments**

#### **3.3 - Pre-measured Sales**

##### **3.3.4 - Dividing Payment Units (7/14)**

Payment Unit(s) \$18,000 in value or greater may be divided at the request of the Purchaser and upon approval of the Unit Manager. Dividing Payment Units is a contract modification which requires a Timber Sale Contract Amendment. There will be only one division per Payment Unit.

### **4 - Transportation**

#### **4.1 - Construction**

##### **4.1.8 - Road Work (1) (8/07)**

The following road work is required: The Purchaser must haul and spread 300 cubic yards of gravel on the access road leading back to Payment Unit 1. There are numerous locations between Payment Units 4 and 8 that require some gravel. All gravel must be hauled prior to any hauling from Payment Units 1-4 and 6.

Gravel is available from a state pit, that is on the north end of the Westman Dam Road which is about 6 miles from the sale.

## 4.2 - Maintenance

### 4.2.1 - Hauling Restriction (12/08)

Hauling may be restricted on forest roads by the Unit Manager or his/her representative. The restriction may occur during spring breakup or during other wet weather conditions.

### 4.2.4 - Grading (10/16)

For completion of the sale, state forest roads must be graded. In general, this will require a road grader or bulldozer to shape up the roads after forest products have been hauled off site. This includes cleaning of drainage areas, grading, crowning and filling with gravel, if necessary. The grading equipment to be used must be approved by the Unit Manager or his/her representative.

## 4.4 - Access

### 4.4.1 - Private property access (3/11)

Permission for access across private land is the responsibility of the Purchaser. The best access into Payment Unit 5 is through private property to the west off of Duffrin Lane. To obtain the landowners contact information contact Dustin 906-399-1828 or Dan 906-399-0879.

## 5 - Operations

### 5.2 - Conduct of Operations

#### 5.2.3 - Operating Restrictions

##### 5.2.3.1 - Operating Restrictions (9/11)

Within Payment Unit(s) 4-7, cutting and skidding are limited to the period of December 1 to March 31, unless there is an extended dry or frozen period, and the Sale Administrator allows harvesting during that period of time. This restriction is because of low wet ground within the Payment Units.

##### 5.2.3.3 - Bark Slippage Restriction (3/09)

Within Payment Unit(s) 1 and 2, cutting and skidding are not permitted during the period of April 15 to July 15. This restriction is because of bark slippage.

#### 5.2.22 - Operating Caution

##### 5.2.22.1 - Operating Caution (6/11)

It is recommended, but not required, that within Payment Unit(s) 3 and 8-9, cutting and skidding, occur during dry summer or frozen winter conditions. The reason for the recommendation is because of some low wet pockets within each of the Payment Units.

## 6 - Safety and Fire Prevention

### 6.2 - Signing

#### 6.2.1 - Road Posting (10/20)

The Purchaser is responsible for posting and maintaining caution signs on the access road back to the Sale Area, south of Westman Lake prior to beginning operations. The road must be posted at appropriate distances from the Sale Area to warn of logging activity and truck traffic. Signs must be removed when harvest operations are suspended or completed. The Purchaser will provide these signs.

## 7 - Other Conditions

### 7.5 - Loss

#### 7.5.1 - Deteriorating Timber (7/09)

The Sale Area has received damage from the eastern larch beetle and the emerald ash borer. The Purchaser should harvest the wood as soon as possible. The Department of Natural Resources is held free of responsibility of any further damage or deterioration due to delay in harvesting.



**TIMBER SALE MAP**

This information provided by authority of Part 525, 1994 PA 451, as amended.

Sale Number

**33-021-25**

Date

**12/09/2024**

Forest Management Unit

Escanaba Mgt Unit

County

Menominee

Mapped By: Beaudou

Cruised By: Salter, Beaudou

Scale

**1:15,840**

Page

**1**

Of

**1**

Township

**35N**

Range

**25W & 26W**

Section(s) and

Subdivision(s) **Sec. 12 S1/2NE, SESW, SE; Sec. 13 NENW, NE; Sec. 7 SWNW;**

**Cover Type**

A = Aspen	J = Jack Pine	O = Oak	U = Upland Brush
B = Paper Birch	K = Rock	P = Lowland Poplar	UM = Upland Mix Forest
C = Cedar	L = Lowland Brush	Q = Mixed Swamp Conifer	V = Bog or Marsh
D = Treed Bog	LM = Lowland Mix Forest	R = Red Pine	W = White Pine
E = Swamp Hardwoods	M = Maple, Beech, Birch	S = Black Spruce	X = Non Stocked
F = Spruce/Fir	MC = Mixed Conifer	T = Tamarack	Y = Sand
G = Grass	MD = Mixed Deciduous	Z = Water	
H = Hemlock	N = Marsh		

**Density**

0 = Non Stocked	5 = Pole Timber Medium
1 = Seedling Sapling Poor	6 = Pole Timber Well
2 = Seedling Sapling Medium	7 = Saw Timber Poor
3 = Seedling Sapling Well	8 = Saw Timber Medium
4 = Pole Timber Poor	9 = Saw Timber Well

Payment Unit Number	Acres	Payment Unit Number	Acres
1	13.1	6	5.3
2	18.3	7	7.9
3	17.5	8	12.6
4	7.7	9	19.2
5	26.7		



**Delayed Mix**

**Compartment 58**

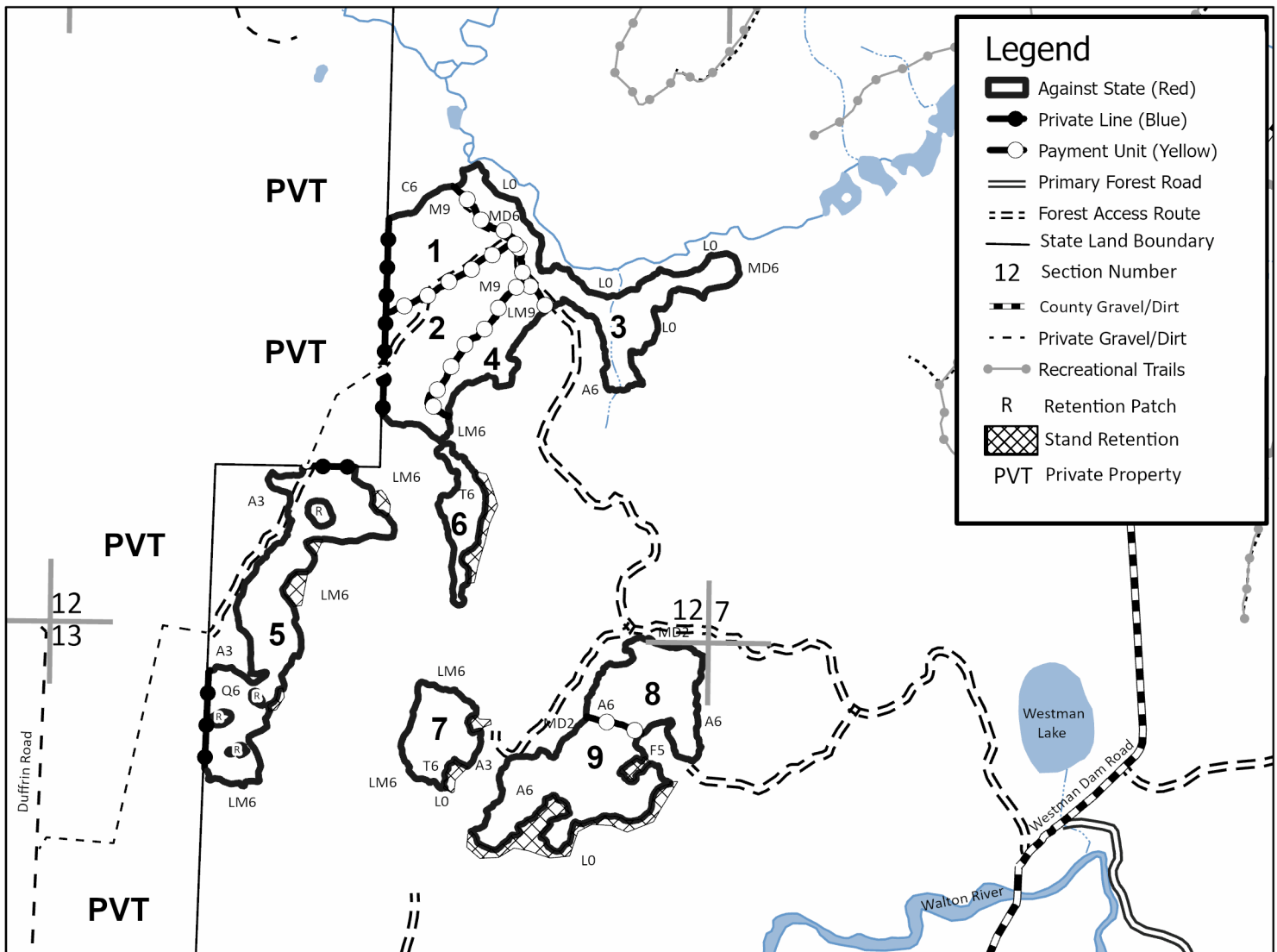
**128.3 Acres**

Use QR Code to  
open Map in App



**Legend**

- Against State (Red)
- Private Line (Blue)
- Payment Unit (Yellow)
- Primary Forest Road
- Forest Access Route
- State Land Boundary
- 12 Section Number
- County Gravel/Dirt
- Private Gravel/Dirt
- Recreational Trails
- R Retention Patch
- Stand Retention
- PVT Private Property



## TIMBER SALE INFORMATION

Elwood Creek Divide (33-022-25)

T35N, R25W, SEC. 7; T35N, R26W, SEC. 1; T35N, R26W, SEC. 12.  
Menominee County (Advertised Price \$12,343.00)

**SALE NOTE:** The best access into Payment Units 1 -3 is through private property from the north. The Purchaser will need to obtain permission. During a dry summer a large portion of Payment Units 1, 3, and 4 could be harvested.

A timber sale contract for this lump sum, sealed bid timber sale will be awarded to the responsible bidder offering the highest sealed bid price. All units of volume listed below were estimated using the Inventory Manager computer program and the new Michigan taper model. Bids must be at or above the following advertised price for each product and species:

<u>PRODUCTS &amp; SPECIES</u>	<u>ESTIMATED UNITS*</u>		<u>ADVERTISED PRICE</u>
Sawtimber			
Paper Birch	0.9	MBF	\$ 97.00 / MBF
Red Maple	1.8	MBF	\$ 109.00 / MBF
Sugar Maple	1.1	MBF	\$ 212.00 / MBF
Pulpwood			
Balsam Fir	159	Cords	\$ 8.00 / Cord
Black Ash	243	Cords	\$ 9.00 / Cord
Black Spruce	23	Cords	\$ 13.60 / Cord
Mixed Aspen	73	Cords	\$ 26.90 / Cord
Mixed Hardwood	255	Cords	\$ 16.40 / Cord
N. White Cedar	254	Cords	\$ 6.10 / Cord
Tamarack	14	Cords	\$ 11.10 / Cord
White Spruce	15	Cords	\$ 13.60 / Cord

\* The total volume is statistically estimated within plus (+) or minus (-) 15.38 percent. There are an estimated 1,103 cords on this timber sale, plus or minus 170 cords at the 95% confidence level. The estimated units are final and not subject to adjustment. Prospective bidders are urged to examine this timber and to make their own estimates of quantity and quality.

### **BOND AND PAYMENT SCHEDULE:**

- A bond in the amount of \$617.00 to insure faithful performance of the conditions of the contract will be deposited by the successful bidder within 21 days of the sale award.
- Cutting in any sale or unit without the required advance payment would be considered a trespass.
- Total payment must be paid in advance or according to the following schedule :
  - Ten percent (10%) of the sale value must be paid within 21 days of the sale award.
  - The 10% down payment will be credited towards the first unit cut.
  - Payment for each of the following units must be made before cutting begins in that unit:

<u>PAYMENT UNIT NUMBER</u>	<u>PERCENT OF TOTAL SALE VALUE</u>
01	19.9%
02	1.7%
03	39.4%
04	39.0%

- If no cutting takes place, the 10% down payment will not be refunded.
- Operations on the contract issued will terminate on 09/30/2029.

### **SALE STATISTICS**

Volumes were calculated in cubic feet using the Michigan taper model. Cubic foot volume includes all wood inside bark for the product indicated. For display purposes, cubic feet were converted to cords and MBF using a simple conversion factor, e.g. 79 cubic feet per cord and 185 cubic feet per MBF. The cubic foot volumes are precise; the cords and MBF volumes are not. Cubic foot volume cannot be directly converted to cords or boards with precision.

### **SALE VOLUMES**

The total estimated sale volume may not equal the sum of the species/products due to the nature of statistical calculations associated with double sampling methodology.

<u>VOLUME</u>		<u>STATISTICAL RANGE IN CORDS</u>		
<u>TOTAL CUBIC FEET</u>	<u>TOTAL CORDS</u>	<u>PERCENT ERROR</u>	<u>MINIMUM</u>	<u>MAXIMUM</u>
87,136	1,103	15.38%	933	1,273

**VDU VOLUMES**

A VDU is a Volume Determination Unit. Volumes and their associated statistics are calculated at the VDU level and summarized to the sale level. There is often a one to one relationship between a VDU and a Payment Unit, but not always, depending on the cruise design. Refer to the VDU TO PAYMENT UNIT table.

	VOLUME			RANGE IN CORDS	
VDU	TOTAL CUBIC FEET	TOTAL CORDS	PERCENT ERROR	MINIMUM	MAXIMUM
1	19,754	250	32.19%	170	331
2	2,356	30	75.72%	7	52
3	40,571	514	21.44%	403	624
6	24,455	310	33.26%	207	413
TOTAL:	87,136	1,103		787	1,419

**VDU TO PAYMENT UNIT**

When a VDU is associated with more than one Payment Unit (PU), the VDU volumes are assigned to the PU based on acres of the VDU within the PU.

VDU	VDU ACRES	PU	PU ACRES
1	16.9	1	16.9
2	5.0	2	5.0
3	28.1	3	28.1
6	23.8	4	23.8
TOTAL:	73.8		73.8

**DESCRIPTION OF TIMBER BY PAYMENT UNIT (PU)**

PU	MARKET GROUP	PRODUCT	QUANTITY	UNIT	ACRES	ADVERTISE PRICE
1	Balsam Fir	Pulpwood	35	Cords	16.9	\$2,458.40
	Black Ash		102	Cords		
	<i>Black Ash</i>		90	Cords		
	<i>Green Ash</i>		12	Cords		
	Black Spruce		17	Cords		
	Mixed Aspen		23	Cords		
	<i>B. T. Aspen</i>		9	Cords		
	<i>Quaking Aspen</i>		14	Cords		
	Mixed Hardwood		23	Cords		
	<i>Paper Birch</i>		17	Cords		
	<i>Red Maple</i>		2	Cords		
	<i>Yellow Birch</i>		4	Cords		
	Tamarack		3	Cords		
2	Balsam Fir	Pulpwood	11	Cords	5.0	\$212.00
	Black Ash		1	Cords		
	<i>Black Ash</i>		1	Cords		
	Black Spruce		2	Cords		
	Mixed Hardwood		4	Cords		
	<i>Paper Birch</i>		4	Cords		
	Tamarack		2	Cords		
3	Sugar Maple	Sawtimber	1.1	MBF	28.1	\$4,862.30
	Balsam Fir	Pulpwood	35	Cords		
	Black Ash		105	Cords		
	<i>Black Ash</i>		99	Cords		
	<i>White Ash</i>		6	Cords		
	Mixed Hardwood		107	Cords		
	<i>American Elm</i>		1	Cords		
	<i>Black Cherry</i>		2	Cords		
	<i>Ironwood</i>		5	Cords		
	<i>Paper Birch</i>		64	Cords		
	<i>Red Maple</i>		21	Cords		
	<i>Sugar Maple</i>		11	Cords		
	<i>Yellow Birch</i>		3	Cords		
	N. White Cedar		254	Cords		
	Tamarack		9	Cords		
4	Paper Birch	Sawtimber	0.9	MBF	23.8	\$4,810.30
	Red Maple	Pulpwood	1.8	MBF		
	Balsam Fir		78	Cords		
	Black Ash		35	Cords		
	<i>Black Ash</i>		7	Cords		
	<i>Green Ash</i>		28	Cords		
	Black Spruce		4	Cords		
	Mixed Aspen		50	Cords		
	<i>Quaking Aspen</i>		50	Cords		
	Mixed Hardwood		121	Cords		
	<i>Balsam Poplar</i>		13	Cords		
	<i>Black Cherry</i>		2	Cords		
	<i>Ironwood</i>		1	Cords		
	<i>Paper Birch</i>		30	Cords		
	<i>Red Maple</i>		75	Cords		
	White Spruce		15	Cords		
	TOTAL:			3.8		
TOTAL:			1,036	Cords		

## **Sale Specific Conditions & Requirements**

**Sale Name: Elwood Creek Divide**

**Sale Number: 33-022-25 Seq#: 1**

### **1 - Sale Area**

#### **1.2 - Boundaries**

##### **1.2.1 - Painted Boundaries (9/19)**

The sale boundary and Payment Unit boundaries are marked and identified by blue, red and yellow paint. Exterior sale boundary lines against private property are marked with blue paint. Exterior sale boundary lines against state are marked with red paint. Interior Payment Unit boundaries are marked with yellow paint. Retention patches are marked with red paint; no harvesting activities may occur within these areas. The painted boundary line trees are not Included Timber and are to be protected. Yellow painted trees designating an interior Payment Unit boundary are only to be cut when all surrounding Payment Units have been paid for.

### **2 - Timber Specifications**

#### **2.1 - Included Timber**

##### **2.1.1 - Clearcut Unit(s) with Unmerchantable Trees (6/14)**

Within Payment Unit(s) 1 - 4, cut all trees that are three (3) inches or more at DBH, with the following exceptions:

Within Payment Units 1 and 2, do not cut cedar.

Within Payment Unit 4, do not cedar or trees marked with green paint.

##### **2.1.11 - Description of Timber Note (2/04)**

Note that the black ash pulpwood volume is a mix of black, green, and white ash. And is a mix of pulpwood, bolts, and potential sawlogs.

### **3 - Payments**

#### **3.3 - Pre-measured Sales**

##### **3.3.4 - Dividing Payment Units (7/14)**

Payment Unit(s) \$18,000 in value or greater may be divided at the request of the Purchaser and upon approval of the Unit Manager. Dividing Payment Units is a contract modification which requires a Timber Sale Contract Amendment. There will be only one division per Payment Unit.

### **4 - Transportation**

#### **4.2 - Maintenance**

##### **4.2.1 - Hauling Restriction (12/08)**

Hauling may be restricted on forest roads by the Unit Manager or his/her representative. The restriction may occur during spring breakup or during other wet weather conditions.

##### **4.2.4 - Grading (10/16)**

For completion of the sale, state forest roads must be graded. In general, this will require a road grader or bulldozer to shape up the roads after forest products have been hauled off site. This includes cleaning of drainage areas, grading, crowning and filling with gravel, if necessary. The grading equipment to be used must be approved by the Unit Manager or his/her representative.

#### **4.4 - Access**

##### **4.4.1 - Private property access (3/11)**

Permission for access across private land into Payment Units 1 - 3 is the responsibility of the Purchaser. The landowner has indicated they would allow access into Payment Units 1 - 3, coming in off of County Road 358 from the north of the Payment Units, but the Purchaser must contact them to obtain permission for reviewing the sale and for sale access. To obtain the landowners contact info, call Dustin 906-399-1828 or Dan 906-399-0879.



#### 4.4.3 - Access gate (12/08)

To access Payment Unit 4 off of the Westman Dam Road there is a gate. The access gate must be locked at the completion of each day unless otherwise approved by the Unit Manager or his/her representative. This gate is on state land. To obtain a key to review the sale, contact Dustin or Dan.

## 5 - Operations

### 5.2 - Conduct of Operations

#### 5.2.3 - Operating Restrictions

##### 5.2.3.1 - Operating Restrictions (9/11)

Within Payment Unit(s) 1 - 3, cutting and skidding are limited to the period of December 1 to March 31, unless there is an extended dry or frozen period, and the Sale Administrator allows harvesting during that period of time. This restriction is because of some low wet ground with all three Payment Units. A large portion of Payment Units 1 and 3, could be harvested during a dry summer.

#### 5.2.22 - Operating Caution

##### 5.2.22.1 - Operating Caution (6/11)

It is recommended, but not required, that within Payment Unit(s) 4, cutting and skidding occur during dry summer or frozen winter conditions. The reason for the recommendation is because of some lower wetter ground on the north end of the Payment Unit.

## 7 - Other Conditions

### 7.5 - Loss

#### 7.5.1 - Deteriorating Timber (7/09)

The Sale Area has received damage from the Emerald Ash Borer. Defoliation is occurring, with a limited amount of mortality also occurring at the time of sale preparation. The Purchaser should harvest the wood as soon as possible. The Department of Natural Resources is held free of responsibility of any further damage or deterioration due to delay in harvesting.



**TIMBER SALE MAP**

This information provided by authority of Part 525, 1994 PA 451, as amended.

Sale Number

**33-022-25**

Date

**12/20/2024**

Forest Management Unit

Escanaba Mgt Unit

County

Menominee

Mapped By: Beaudou

Cruised By: Salter, Beaudou

Scale

**1:14,500**

Page

**1**

Of

**1**

Township  
35N

Range  
25/26W

Section(s) and  
Subdivision(s)

26W

25W

Sec. 1 NESE,S1/2SE; Sec. 12 NE; Sec. 7 SWNW;

**Cover Type**

A = Aspen	J = Jack Pine	O = Oak	U = Upland Brush
B = Paper Birch	K = Rock	P = Lowland Poplar	UM = Upland Mix Forest
C = Cedar	L = Lowland Brush	Q = Mixed Swamp Conifer	V = Bog or Marsh
D = Treed Bog	LM = Lowland Mix Forest	R = Red Pine	W = White Pine
E = Swamp Hardwoods	M = Maple, Beech, Birch	S = Black Spruce	X = Non Stocked
F = Spruce/Fir	MC = Mixed Conifer	T = Tamarack	Y = Sand
G = Grass	MD = Mixed Deciduous		Z = Water
H = Hemlock	N = Marsh		

**Density**

0 = Non Stocked	5 = Pole Timber Medium
1 = Seedling Sapling Poor	6 = Pole Timber Well
2 = Seedling Sapling Medium	7 = Saw Timber Poor
3 = Seedling Sapling Well	8 = Saw Timber Medium
4 = Pole Timber Poor	9 = Saw Timber Well

**Elwood Creek Divide  
Compartment 58  
73.8 Acres**

Payment Unit Number	Acres
1	16.9
2	5
3	28.1
4	23.8

PVT

PVT

PVT

Use QR Code to  
open Map in App



**Legend**

- Against State (Red)
- Private Line (Blue)
- Payment Unit (Yellow)
- Primary Forest Road
- Forest Access Route
- Administrative Access Only
- Paved Road
- County Gravel/Dirt Road
- Private Gravel/Dirt
- Recreational Trails
- State Land Boundary
- Section Number
- Retention Area
- PVT Private Property

0 0.23 0.45 0.9 Miles

## TIMBER SALE INFORMATION

Wery's Beef (33-023-25)

T35N, R26W, SEC. 13.

Menominee County (Advertised Price \$7,978.40)

**SALE NOTE:** The Purchaser must purchase and install a new culvert and haul some gravel, per Sale Condition 4.1.8. Most of the Payment Units have some lower ground, but a significant amount of the sale could be harvested during a dry summer.

A timber sale contract for this lump sum, sealed bid timber sale will be awarded to the responsible bidder offering the highest sealed bid price. All units of volume listed below were estimated using the Inventory Manager computer program and the new Michigan taper model. Bids must be at or above the following advertised price for each product and species:

<u>PRODUCTS &amp; SPECIES</u>	<u>ESTIMATED UNITS*</u>	<u>ADVERTISED PRICE</u>
Pulpwood		
Balsam Fir	96 Cords	\$ 6.95 / Cord
Mixed Hardwood	330 Cords	\$ 14.20 / Cord
Mixed Spruce	42 Cords	\$ 11.75 / Cord
N. White Cedar	96 Cords	\$ 5.30 / Cord
Quaking Aspen	61 Cords	\$ 23.30 / Cord
Tamarack	21 Cords	\$ 9.60 / Cord

\* The total volume is statistically estimated within plus (+) or minus (-) 19.97 percent. There are an estimated 642 cords on this timber sale, plus or minus 128 cords at the 95% confidence level. The estimated units are final and not subject to adjustment. Prospective bidders are urged to examine this timber and to make their own estimates of quantity and quality.

### **BOND AND PAYMENT SCHEDULE:**

1. A bond in the amount of \$399.00 to insure faithful performance of the conditions of the contract will be deposited by the successful bidder within 21 days of the sale award.
2. Cutting in any sale or unit without the required advance payment would be considered a trespass.
3. Total payment must be paid in advance or according to the following schedule :
  - (a) Ten percent (10%) of the sale value must be paid within 21 days of the sale award.
  - (b) The 10% down payment will be credited towards the first unit cut.
  - (c) Payment for each of the following units must be made before cutting begins in that unit:

<u>PAYMENT UNIT NUMBER</u>	<u>PERCENT OF TOTAL SALE VALUE</u>
01	12.3%
02	29.3%
03	3.9%
04	22.1%
05	32.4%

4. If no cutting takes place, the 10% down payment will not be refunded.
5. Operations on the contract issued will terminate on 06/30/2028.

### **SALE STATISTICS**

Volumes were calculated in cubic feet using the Michigan taper model. Cubic foot volume includes all wood inside bark for the product indicated. For display purposes, cubic feet were converted to cords and MBF using a simple conversion factor, e.g. 79 cubic feet per cord and 185 cubic feet per MBF. The cubic foot volumes are precise; the cords and MBF volumes are not. Cubic foot volume cannot be directly converted to cords or boards with precision.

### **SALE VOLUMES**

The total estimated sale volume may not equal the sum of the species/products due to the nature of statistical calculations associated with double sampling methodology.

<u>VOLUME</u>			<u>STATISTICAL RANGE IN CORDS</u>	
<u>TOTAL CUBIC FEET</u>	<u>TOTAL CORDS</u>	<u>PERCENT ERROR</u>	<u>MINIMUM</u>	<u>MAXIMUM</u>
50,706	642	19.97%	514	770

**VDU VOLUMES**

A VDU is a Volume Determination Unit. Volumes and their associated statistics are calculated at the VDU level and summarized to the sale level. There is often a one to one relationship between a VDU and a Payment Unit, but not always, depending on the cruise design. Refer to the VDU TO PAYMENT UNIT table.

	VOLUME			RANGE IN CORDS	
VDU	TOTAL CUBIC FEET	TOTAL CORDS	PERCENT ERROR	MINIMUM	MAXIMUM
25	6,099	77	51.85%	37	117
28	18,678	236	32.89%	159	314
29	1,920	24	44.94%	13	35
32	24,008	304	31.67%	208	400
TOTAL:	50,706	642		417	867

**VDU TO PAYMENT UNIT**

When a VDU is associated with more than one Payment Unit (PU), the VDU volumes are assigned to the PU based on acres of the VDU within the PU.

VDU	VDU ACRES	PU	PU ACRES
25	7.6	1	7.6
28	14.2	2	14.2
29	2.5	3	2.5
32	32.5	4	13.1
32	32.5	5	19.4
TOTAL:	89.3		56.8

**DESCRIPTION OF TIMBER BY PAYMENT UNIT (PU)**

PU	MARKET GROUP	PRODUCT	QUANTITY	UNIT	ACRES	ADVERTISE PRICE
1	Balsam Fir	Pulpwood	7	Cords	7.6	\$984.50
	Mixed Hardwood		44	Cords		
	<i>Black Ash</i>		3	<i>Cords</i>		
	<i>Paper Birch</i>		38	<i>Cords</i>		
	<i>Red Maple</i>		3	<i>Cords</i>		
	Mixed Spruce		5	Cords		
	<i>White Spruce</i>		5	<i>Cords</i>		
	Quaking Aspen		3	Cords		
	Tamarack		19	Cords		
2	Balsam Fir	Pulpwood	41	Cords	14.2	\$2,333.85
	Mixed Hardwood		66	Cords		
	<i>Balsam Poplar</i>		7	<i>Cords</i>		
	<i>Black Ash</i>		40	<i>Cords</i>		
	<i>Green Ash</i>		7	<i>Cords</i>		
	<i>Paper Birch</i>		3	<i>Cords</i>		
	<i>Red Maple</i>		5	<i>Cords</i>		
	<i>White Ash</i>		4	<i>Cords</i>		
	Mixed Spruce		12	Cords		
	<i>Black Spruce</i>		8	<i>Cords</i>		
	<i>White Spruce</i>		4	<i>Cords</i>		
	N. White Cedar		96	Cords		
	Quaking Aspen		19	Cords		
	Tamarack		2	Cords		
3	Balsam Fir	Pulpwood	7	Cords	2.5	\$311.10
	Mixed Hardwood		16	Cords		
	<i>Paper Birch</i>		1	<i>Cords</i>		
	<i>White Ash</i>		15	<i>Cords</i>		
	Mixed Spruce		3	Cords		
	<i>White Spruce</i>		3	<i>Cords</i>		
4	Balsam Fir	Pulpwood	17	Cords	13.1	\$1,761.10
	Mixed Hardwood		82	Cords		
	<i>American Elm</i>		3	<i>Cords</i>		
	<i>Balsam Poplar</i>		14	<i>Cords</i>		
	<i>Basswood</i>		3	<i>Cords</i>		
	<i>Black Ash</i>		17	<i>Cords</i>		
	<i>Black Cherry</i>		1	<i>Cords</i>		
	<i>Green Ash</i>		13	<i>Cords</i>		
	<i>Paper Birch</i>		11	<i>Cords</i>		
	<i>Sugar Maple</i>		15	<i>Cords</i>		
	<i>White Ash</i>		5	<i>Cords</i>		
	Mixed Spruce		9	Cords		
	<i>White Spruce</i>		9	<i>Cords</i>		
	Quaking Aspen		16	Cords		
5	Balsam Fir	Pulpwood	24	Cords	19.4	\$2,587.85
	Mixed Hardwood		122	Cords		
	<i>American Elm</i>		4	<i>Cords</i>		
	<i>Balsam Poplar</i>		21	<i>Cords</i>		
	<i>Basswood</i>		5	<i>Cords</i>		
	<i>Black Ash</i>		25	<i>Cords</i>		
	<i>Black Cherry</i>		2	<i>Cords</i>		
	<i>Green Ash</i>		19	<i>Cords</i>		
	<i>Paper Birch</i>		17	<i>Cords</i>		
	<i>Sugar Maple</i>		22	<i>Cords</i>		
	<i>White Ash</i>		7	<i>Cords</i>		
	Mixed Spruce		13	Cords		
	<i>White Spruce</i>		13	<i>Cords</i>		

DESCRIPTION OF TIMBER BY PAYMENT UNIT (PU), CON'T

PU	MARKET GROUP	PRODUCT	QUANTITY	UNIT	ACRES	ADVERTISE PRICE
5 con't	Quaking Aspen	Pulpwood	23	Cords		
TOTAL:			646	Cords		

## **Sale Specific Conditions & Requirements**

**Sale Name: Wery's Beef**

**Sale Number: 33-023-25 Seq#: 1**

### **1 - Sale Area**

#### **1.2 - Boundaries**

##### **1.2.1 - Painted Boundaries (9/19)**

The sale boundary and Payment Unit boundaries are marked and identified by blue, red and yellow paint. Exterior sale boundary lines against private property are marked with blue paint. Exterior sale boundary lines against state are marked with red paint. Interior Payment Unit boundaries are marked with yellow paint. Retention patches are marked with red paint; no harvesting activities may occur within these areas. Yellow painted trees designating an interior Payment Unit boundary are only to be cut when all surrounding Payment Units have been paid for.

### **2 - Timber Specifications**

#### **2.1 - Included Timber**

##### **2.1.1 - Clearcut Unit(s) with Unmerchantable Trees (6/14)**

Within Payment Unit(s) 1 - 5, cut all trees that are three (3) inches or more at DBH with the following exceptions:

Within Payment Unit 1, do not cut cedar.

Within Payment Units 3, 4, and 5, do not cut cedar, hemlock, or pine.

##### **2.1.9 - Harvest Exception (12/24)**

Do not cut any cedar trees within Payment Unit 1, other than those that are necessary to remove in order to operate within the Sale Area. Every effort must be made to preserve the existing cedar and to leave an intact stand upon sale completion. All cut cedar shall be piled separately by product and scaled in the woods, unless other scaling arrangements are agreed to by the Unit Manager or his/her representative. Stumpage price for cedar shall be \$35.00 per cord.

### **4 - Transportation**

#### **4.1 - Construction**

##### **4.1.8 - Road Work (1) (8/07)**

The following road work is required: the Purchaser must purchase and install a new 18" (inch) by 24' (foot) corrugated steel culvert. The Purchaser must also haul and spread a minimum of 50 cubic yards of pit run gravel. With a minimum of twelve inches of gravel placed over the culvert, and the remaining gravel being placed in the approaches to the culvert. The exact culvert location will be identified during the Pre-Sale meeting, but is within Payment Unit 5. All roadwork must be completed before any wood is hauled from the sale. Gravel is available from a state pit, about 11 miles away off the Hayward Lake Road.

#### **4.2 - Maintenance**

##### **4.2.1 - Hauling Restriction (12/08)**

Hauling may be restricted on forest roads by the Unit Manager or his/her representative. The restriction may occur during spring breakup or during other wet weather conditions.

##### **4.2.4 - Grading (10/16)**

For completion of the sale, state forest roads must be graded. In general, this will require a road grader or bulldozer to shape up the roads after forest products have been hauled off site. This includes cleaning of drainage areas, grading, crowning and filling with gravel, if necessary. The grading equipment to be used must be approved by the Unit Manager or his/her representative.

### **5 - Operations**

#### **5.2 - Conduct of Operations**

##### **5.2.3 - Operating Restrictions**

#### 5.2.3.1 - Operating Restrictions (9/11)

Within Payment Unit(s) 1, 2, and 5, cutting and skidding are limited to the period of December 1 to March 31, unless there is an extended dry or frozen period, and the Sale Administrator allows harvesting during that period of time. This restriction is because of low wet ground through parts of the Payment Units.

#### 5.2.22 - Operating Caution

##### 5.2.22.1 - Operating Caution (6/11)

It is recommended, but not required, that within Payment Unit(s) 3 and 4, cutting and skidding occur during dry summer or frozen winter conditions. The reason for the recommendation is because of some pockets of low wet ground within each of the Payment Units.

### 7 - Other Conditions

#### 7.5 - Loss

##### 7.5.1 - Deteriorating Timber (7/09)

The Sale Area has received damage from the Emerald Ash Borer. The Purchaser should harvest the wood as soon as possible. The Department of Natural Resources is held free of responsibility of any further damage or deterioration due to delay in harvesting.





**TIMBER SALE MAP**

This information provided by authority of Part 525, 1994 PA 451, as amended.

Sale Number

**33-023-25**

Date

**01/15/2025**

Forest Management Unit

Escanaba Mgt Unit

County

Menominee

Mapped By: Beaudou

Cruised By: Salter, Beaudou

Scale

**1:13,000**

Page

**1**

Of

**1**

Township  
35N

Range  
26W

Section(s) and  
Subdivision(s) Sec. 13 E1/2NW,W1/2NE,E1/2SW,W1/2SE;

**Cover Type**

A = Aspen	J = Jack Pine	O = Oak	U = Upland Brush
B = Paper Birch	K = Rock	P = Lowland Poplar	UM = Upland Mix Forest
C = Cedar	L = Lowland Brush	Q = Mixed Swamp Conifer	V = Bog or Marsh
D = Treed Bog	LM = Lowland Mix Forest	R = Red Pine	W = White Pine
E = Swamp Hardwoods	M = Maple, Beech, Birch	S = Black Spruce	X = Non Stocked
F = Spruce/Fir	MC = Mixed Conifer	T = Tamarack	Y = Sand
G = Grass	MD = Mixed Deciduous	Z = Water	
H = Hemlock	N = Marsh		

**Density**

0 = Non Stocked	5 = Pole Timber Medium
1 = Seedling Sapling Poor	6 = Pole Timber Well
2 = Seedling Sapling Medium	7 = Saw Timber Poor
3 = Seedling Sapling Well	8 = Saw Timber Medium
4 = Pole Timber Poor	9 = Saw Timber Well

**Payment Unit  
Number**

1	7.6
2	14.2
3	2.5
4	13.1
5	19.4

**Acres**



**Wery's Beef  
Compartment 58  
56.8 Acres**

Use QR Code to  
open Map in App



PVT

PVT

PVT

**Legend**

- Against State (Red)
- Private Line (Blue)
- Payment Unit (Yellow)
- Forest Access Route
- County Gravel/Dirt
- Private Gravel/Dirt
- PVT Private Property
- R Retention Patch
- Stand Retention
- 13 Section Number
- State Land Boundary

0 0.2 0.4 0.8 Miles



Delayed Mix (33-021-25)

T35N, R25W, SEC. 7; T35N, R26W, SEC. 12; T35N, R26W, SEC. 13; Menominee

In response to the notice of sale to be held 3:00 p.m. (local time) on June 4, 2025, I am hereby submitting my sealed bid ( firm offer) for the following forest products to be cut. Bids for individual species must be at or above the advertised price. All non-responsive bid forms may be rejected.

<u>PRODUCTS &amp; SPECIES</u>	<u>ESTIMATED VOLUME*</u>	<u>ADVERTISED PRICE</u>	<u>BID PRICE/UNIT</u>
<b>Sawtimber</b>			
Basswood	19.6 MBF	\$ 62.00/MBF	\$ _____
Paper Birch	2.3 MBF	\$ 97.00/MBF	\$ _____
Red Maple	6.8 MBF	\$ 109.00/MBF	\$ _____
Sugar Maple	8.0 MBF	\$ 212.00/MBF	\$ _____
<b>Pulpwood</b>			
Balsam Fir	140 Cords	\$ 8.00/Cord	\$ _____
Mixed Aspen	416 Cords	\$ 26.90/Cord	\$ _____
Mixed Hardwood	681 Cords	\$ 16.40/Cord	\$ _____
Mixed Spruce	137 Cords	\$ 13.60/Cord	\$ _____
N. White Cedar	89 Cords	\$ 6.10/Cord	\$ _____
Tamarack	320 Cords	\$ 11.10/Cord	\$ _____

\*The volumes are statistically estimated within plus (+) or minus (-) 10.51 percent at 95% confidence level. These estimated volumes are final and not subject to adjustment. Prospective bidders are urged to examine this timber and to make their own estimates of quantity and quality.

I understand that any or all bids may be rejected. All bids must be signed and all bid items must be bid or the bid form may be rejected. I also understand that consideration and awarding a contract will be based upon my past performance and ability to complete the contract based upon equipment and staffing subject to my control .

FEDERAL ID: \_\_\_\_ - \_\_\_\_ - \_\_\_\_ or SOCIAL SECURITY NUMBER: \_\_\_\_ - \_\_\_\_ - \_\_\_\_

Company or individual bidding: \_\_\_\_\_

Company representative's name: \_\_\_\_\_

Address: \_\_\_\_\_

City: \_\_\_\_\_ State: \_\_\_\_\_ Zip: \_\_\_\_\_

IF AVAILABLE, PLEASE PLACE THE PERSONALIZED LABEL FROM YOUR PROSPECTUS IN THE ABOVE BOX.

Individual or company representative's signature: \_\_\_\_\_ Date: \_\_\_\_\_

Phone number : \_\_\_\_\_ Email (optional): \_\_\_\_\_

**THE WINNING BIDDER MUST COMPLETE THE VERIFICATION OF WORKER'S DISABILITY COMPENSATION ACT  
COMPLIANCE (ON REVERSE SIDE IF DOUBLE SIDED) WITHIN 21 DAYS OF SALE AWARD DATE**



## TIMBER SALE VERIFICATION OF WORKER'S DISABILITY COMPENSATION ACT COMPLIANCE

As required by Act 317, P.A. 1969 (Worker's Compensation) and  
Part 5 of Act 451 of 1994, as amended.

### FOR DEPARTMENT USE ONLY

Sale Number (XX - XXX - XX - XX)

Forest Management Unit:

### VERIFICATION OF WORKER'S DISABILITY COMPENSATION ACT COMPLIANCE

- This verification must be completed and submitted within 21 days of contract award and prior to the issuance of the timber sale contract.
- In addition, if boxes 2B or 2C are checked, then Notice of Exclusion or Certificate of Insurance must be submitted within twenty-one (21) days of the contract award and prior to the issuance of the timber sale contract.
- All Information must be typed or printed except for written signatures.

Please Check Appropriate Categories:

1. My business is organized as (you **must** check one of the boxes below):
  - A. ☐ Sole Proprietorship (individual)
  - B. ☐ Partnership
  - C. ☐ Corporation
2. You **must** check one of the boxes below:
  - A. ☐ I certify my business is a sole proprietorship and it has no employees but the sole proprietor. I am not subject to the Worker's Compensation Laws.
  - B. ☐ I certify my business has satisfied its obligation to the Worker's Compensation Act through the use of an approved Notice of Exclusion (BWC-337, Rev. 5/96). I will provide a copy of the Notice of Exclusion within 21 days of the contract award. (For questions or a copy of the BWC-337, please call the Worker's Compensation Bureau at 517-322-1195).
  - C. ☐ I certify my business has a Worker's Compensation Policy. I will provide an original Certificate of Insurance within twenty-one (21) days of the contract award.
3. If you have checked item 2(A) or 2(B), you **must** indicate the number of **both** full-time and part-time employees, other than yourself, including family members and active partners (if none, you must enter "0").

\_\_\_\_\_ Full-time Employees

\_\_\_\_\_ Part-time Employees

Name of Business		Federal ID (or) Social Security No.
Address		Telephone (       )
City	State	ZIP

*I hereby certify that the above information is true and correct. I agree to notify the Michigan DNR of any changes that occur in factors affecting my coverage during any of my present and future operations.*

\_\_\_\_\_  
Signature of Owner or Authorized Representative

\_\_\_\_\_  
Title

\_\_\_\_\_  
Date

Please complete the "SEALED BID" information on the next page

Elwood Creek Divide (33-022-25)

T35N, R25W, SEC. 7; T35N, R26W, SEC. 1; T35N, R26W, SEC. 12; Menominee

In response to the notice of sale to be held 3:00 p.m. (local time) on June 4, 2025, I am hereby submitting my sealed bid ( firm offer) for the following forest products to be cut. Bids for individual species must be at or above the advertised price. All non-responsive bid forms may be rejected.

<u>PRODUCTS &amp; SPECIES</u>	<u>ESTIMATED VOLUME*</u>	<u>ADVERTISED PRICE</u>	<u>BID PRICE/UNIT</u>
<b>Sawtimber</b>			
Paper Birch	0.9 MBF	\$ 97.00/MBF	\$ _____
Red Maple	1.8 MBF	\$ 109.00/MBF	\$ _____
Sugar Maple	1.1 MBF	\$ 212.00/MBF	\$ _____
<b>Pulpwood</b>			
Balsam Fir	159 Cords	\$ 8.00/Cord	\$ _____
Black Ash	243 Cords	\$ 9.00/Cord	\$ _____
Black Spruce	23 Cords	\$ 13.60/Cord	\$ _____
Mixed Aspen	73 Cords	\$ 26.90/Cord	\$ _____
Mixed Hardwood	255 Cords	\$ 16.40/Cord	\$ _____
N. White Cedar	254 Cords	\$ 6.10/Cord	\$ _____
Tamarack	14 Cords	\$ 11.10/Cord	\$ _____
White Spruce	15 Cords	\$ 13.60/Cord	\$ _____

\*The volumes are statistically estimated within plus (+) or minus (-) 15.38 percent at 95% confidence level. These estimated volumes are final and not subject to adjustment. Prospective bidders are urged to examine this timber and to make their own estimates of quantity and quality.

I understand that any or all bids may be rejected. All bids must be signed and all bid items must be bid or the bid form may be rejected. I also understand that consideration and awarding a contract will be based upon my past performance and ability to complete the contract based upon equipment and staffing subject to my control .

FEDERAL ID: \_\_\_\_\_ or SOCIAL SECURITY NUMBER: \_\_\_\_\_

Company or individual bidding: \_\_\_\_\_

Company representative's name: \_\_\_\_\_

Address: \_\_\_\_\_

City: \_\_\_\_\_ State: \_\_\_\_\_ Zip: \_\_\_\_\_

IF AVAILABLE, PLEASE PLACE THE PERSONALIZED LABEL FROM YOUR PROSPECTUS IN THE ABOVE BOX.

Individual or company representative's signature: \_\_\_\_\_ Date: \_\_\_\_\_

Phone number : \_\_\_\_\_ Email (optional): \_\_\_\_\_

**THE WINNING BIDDER MUST COMPLETE THE VERIFICATION OF WORKER'S DISABILITY COMPENSATION ACT  
COMPLIANCE (ON REVERSE SIDE IF DOUBLE SIDED) WITHIN 21 DAYS OF SALE AWARD DATE**



## TIMBER SALE VERIFICATION OF WORKER'S DISABILITY COMPENSATION ACT COMPLIANCE

As required by Act 317, P.A. 1969 (Worker's Compensation) and  
Part 5 of Act 451 of 1994, as amended.

### FOR DEPARTMENT USE ONLY

Sale Number (XX - XXX - XX - XX)

Forest Management Unit:

### VERIFICATION OF WORKER'S DISABILITY COMPENSATION ACT COMPLIANCE

- This verification must be completed and submitted within 21 days of contract award and prior to the issuance of the timber sale contract.
- In addition, if boxes 2B or 2C are checked, then Notice of Exclusion or Certificate of Insurance must be submitted within twenty-one (21) days of the contract award and prior to the issuance of the timber sale contract.
- All Information must be typed or printed except for written signatures.

Please Check Appropriate Categories:

1. My business is organized as (you **must** check one of the boxes below):
  - A. ☐ Sole Proprietorship (individual)
  - B. ☐ Partnership
  - C. ☐ Corporation
2. You **must** check one of the boxes below:
  - A. ☐ I certify my business is a sole proprietorship and it has no employees but the sole proprietor. I am not subject to the Worker's Compensation Laws.
  - B. ☐ I certify my business has satisfied its obligation to the Worker's Compensation Act through the use of an approved Notice of Exclusion (BWC-337, Rev. 5/96). I will provide a copy of the Notice of Exclusion within 21 days of the contract award. (For questions or a copy of the BWC-337, please call the Worker's Compensation Bureau at 517-322-1195).
  - C. ☐ I certify my business has a Worker's Compensation Policy. I will provide an original Certificate of Insurance within twenty-one (21) days of the contract award.
3. If you have checked item 2(A) or 2(B), you **must** indicate the number of **both** full-time and part-time employees, other than yourself, including family members and active partners (if none, you must enter "0").

\_\_\_\_\_ Full-time Employees

\_\_\_\_\_ Part-time Employees

Name of Business		Federal ID (or) Social Security No.
Address		Telephone (       )
City	State	ZIP

*I hereby certify that the above information is true and correct. I agree to notify the Michigan DNR of any changes that occur in factors affecting my coverage during any of my present and future operations.*

\_\_\_\_\_  
Signature of Owner or Authorized Representative

\_\_\_\_\_  
Title

\_\_\_\_\_  
Date

Please complete the "SEALED BID" information on the next page

Wery's Beef (33-023-25)  
T35N, R26W, SEC. 13; Menominee COUNTY

In response to the notice of sale to be held 3:00 p.m. (local time) on June 4, 2025, I am hereby submitting my sealed bid ( firm offer) for the following forest products to be cut. Bids for individual species must be at or above the advertised price. All non-responsive bid forms may be rejected.

<u>PRODUCTS &amp; SPECIES</u>	<u>ESTIMATED VOLUME*</u>	<u>ADVERTISED PRICE</u>	<u>BID PRICE/UNIT</u>
Pulpwood			
Balsam Fir	96 Cords	\$ 6.95/Cord	\$ _____
Mixed Hardwood	330 Cords	\$ 14.20/Cord	\$ _____
Mixed Spruce	42 Cords	\$ 11.75/Cord	\$ _____
N. White Cedar	96 Cords	\$ 5.30/Cord	\$ _____
Quaking Aspen	61 Cords	\$ 23.30/Cord	\$ _____
Tamarack	21 Cords	\$ 9.60/Cord	\$ _____

\*The volumes are statistically estimated within plus (+) or minus (-) 19.97 percent at 95% confidence level. These estimated volumes are final and not subject to adjustment. Prospective bidders are urged to examine this timber and to make their own estimates of quantity and quality.

I understand that any or all bids may be rejected. All bids must be signed and all bid items must be bid or the bid form may be rejected. I also understand that consideration and awarding a contract will be based upon my past performance and ability to complete the contract based upon equipment and staffing subject to my control .

FEDERAL ID: \_\_\_\_ - \_\_\_\_ - \_\_\_\_ or SOCIAL SECURITY NUMBER: \_\_\_\_ - \_\_\_\_ - \_\_\_\_

Company or individual bidding: \_\_\_\_\_

Company representative's name: \_\_\_\_\_

Address: \_\_\_\_\_

City: \_\_\_\_\_ State: \_\_\_\_\_ Zip: \_\_\_\_\_

IF AVAILABLE, PLEASE PLACE THE PERSONALIZED LABEL FROM YOUR PROSPECTUS IN THE ABOVE BOX.

Individual or company representative's signature: \_\_\_\_\_ Date: \_\_\_\_\_

Phone number : \_\_\_\_\_ Email (optional): \_\_\_\_\_

**THE WINNING BIDDER MUST COMPLETE THE VERIFICATION OF WORKER'S DISABILITY COMPENSATION ACT  
COMPLIANCE (ON REVERSE SIDE IF DOUBLE SIDED) WITHIN 21 DAYS OF SALE AWARD DATE**



**TIMBER SALE**  
**VERIFICATION OF WORKER'S DISABILITY**  
**COMPENSATION ACT COMPLIANCE**

*As required by Act 317, P.A. 1969 (Worker's Compensation) and  
Part 5 of Act 451 of 1994, as amended.*

**FOR DEPARTMENT USE ONLY**

Sale Number (XX - XXX - XX - XX)

Forest Management Unit:

**VERIFICATION OF WORKER'S DISABILITY COMPENSATION ACT COMPLIANCE**

- This verification must be completed and submitted within 21 days of contract award and prior to the issuance of the timber sale contract.
- In addition, if boxes 2B or 2C are checked, then Notice of Exclusion or Certificate of Insurance must be submitted within twenty-one (21) days of the contract award and prior to the issuance of the timber sale contract.
- All information must be typed or printed except for written signatures.

Please Check Appropriate Categories:

1. My business is organized as (you **must** check one of the boxes below):
  - A. ☐ Sole Proprietorship (individual)
  - B. ☐ Partnership
  - C. ☐ Corporation
2. You **must** check one of the boxes below:
  - A. ☐ I certify my business is a sole proprietorship and it has no employees but the sole proprietor. I am not subject to the Worker's Compensation Laws.
  - B. ☐ I certify my business has satisfied its obligation to the Worker's Compensation Act through the use of an approved Notice of Exclusion (BWC-337, Rev. 5/96). I will provide a copy of the Notice of Exclusion within 21 days of the contract award. (For questions or a copy of the BWC-337, please call the Worker's Compensation Bureau at 517-322-1195).
  - C. ☐ I certify my business has a Worker's Compensation Policy. I will provide an original Certificate of Insurance within twenty-one (21) days of the contract award.
3. If you have checked item 2(A) or 2(B), you **must** indicate the number of **both** full-time and part-time employees, other than yourself, including family members and active partners (if none, you must enter "0").

\_\_\_\_\_ Full-time Employees

\_\_\_\_\_ Part-time Employees

Name of Business		Federal ID (or) Social Security No.
Address		Telephone (       )
City	State	ZIP

*I hereby certify that the above information is true and correct. I agree to notify the Michigan DNR of any changes that occur in factors affecting my coverage during any of my present and future operations.*

\_\_\_\_\_  
Signature of Owner or Authorized Representative

\_\_\_\_\_  
Title

\_\_\_\_\_  
Date

**Please complete the "SEALED BID" information on the next page**