



**DEPARTMENT OF NATURAL RESOURCES
STATE OF MICHIGAN
TIMBER SALE PROSPECTUS #7596**

SCHEDULED SALE DATE AND TIME: 10:00 a.m. (local time) on July 29, 2025.

LOCATION: GLADWIN MGMT UNIT, 801 NORTH SILVERLEAF, GLADWIN, MI 48624.

PROSPECTUS NOTE: The bidder is advised to inspect the sale area and review the location, estimated volumes, operating costs and contract terms of proposed sales. Please be aware that some landowners may request 60 days or more notice for access across their land.

Notice is hereby given that bids will be received by the Unit Manager, GLADWIN MANAGEMENT UNIT, for certain timber on the following described lands:

Thru the Pine Aspen (73-001-24) / T18N, R01E, SEC. 13, SENE,NESW,SE.

T18N, R01E, SEC. 24, NENE.

Gladwin County, Advertised Price \$65,986.55, 97.5 Acres, Aspen, Hardwood.

SALE NOTE: Payment Units 1, 2, 4, and 5 have inclusion of wetter ground, so rutting could become an issue. Also access to the units are through a gate that will need to be locked at the end of each day. In addition, there are several intermittent drainages that will need to be crossed to access portions of the units. These will require use of corduroy, crane mats and or equalization tubes. The drainage will need to be restored to their nature grade at the end of the sale.

Heil Deer Select (73-002-24) / T18N, R01E, SEC. 13, S1/2NW,NE,NESW,NWSE.

T18N, R02E, SEC. 18, NWNW,S1/2NW,S1/2NE,E1/2SE.

T18N, R02E, SEC. 7 , NWSW.

Gladwin County, Advertised Price \$48,154.80, 150.8 Acres, Hardwood, Aspen.

SALE NOTE: All sale units have areas of wetter ground, so rutting may become an issue. The sale is restricted to dry or frozen conditions between July 15 to March 31. The use of the tops to corduroy between harvest areas will be needed in Payment Units 2 and 3. Within Payment Unit 6 tops may be needed to keep the logging equipment from rutting. The trail behind the gate by Payment Unit 5 should be used to limit the creation of trails.

BID INSTRUCTIONS (VER. 10/10/2022):

1. Scheduled Bid Location, Date, and Time (2/11)

Bids must be received by the Unit Manager, GLADWIN OFFICE, 801 NORTH SILVERLEAF, GLADWIN, MI 48624, no later than 10:00 a.m. (local time) on July 29, 2025. For further information concerning this sale, contact Blair Tweedale at 989-426-9205 extension 7640.

2. Bidder's Qualifications (10/22)

If all or part of a timber sale was prepared by a private contractor, the contractor and that contractor's company are not permitted to bid on the timber sale. A person must be 18 years of age or older to purchase timber. Permanent employees of the Department of Natural Resources or members of their immediate household may not bid. Former employees, in the permanent or seasonal class, may not bid until 3 months after the last day of active duty. Bids will not be accepted from individuals or companies appearing on the DNR/FRD No-Bid List. This list contains the names of purchasers who previously failed to execute a contract within 21-days or who have a history of poor performance.

3. Preparation of Sealed Bids (5/16)

Bid Forms may be completed online thru Michigan DNR Timber Sale Online Bidding (OLB) at www.michigan.gov/timberbidding or by completing the hardcopy Bid Form found in the Timber Sale Prospectus. Hardcopy Bid Forms shall be manually signed in ink. Registration in OLB is considered your 'signature' for all bids submitted thru that system. Bid prices must be entered for each species and product in the Bid Price column for all material subject to bidding and all fill-in blanks must be completed. If erasures or other changes appear on the hardcopy Bid Form, each erasure or change must be initialed by the person signing the bid.

4. Submission of Sealed Bids (5/16)

Bid forms may be obtained from the Unit Manager or thru OLB. Bids may be submitted hardcopy or thru OLB. All hardcopy bids must be submitted on the bid form and in an envelope clearly identified as described in this section. NOTE: Only one bid form per bid envelope. Sealed bids must be submitted to the Unit office designated in the prospectus and must be submitted at or prior to the time established in the prospectus. The envelope should show on the outside (a) the sale name or number and (b) the date and time of bid opening, as shown in the prospectus. Bids received after the time specified in the sale prospectus are late bids and will be rejected.

It is possible for a bidder to submit multiple bids on a single sale. For example, a bid may be submitted hardcopy and a bid may be submitted thru OLB. Or, two bidders from the same company could both submit bids on the same sale. If this were to happen, the State would accept all bids received and award the contract accordingly. All bidding and contractual requirements would apply to all bids received.

5. Public Opening of Sealed Bids (7/16)

If conditions permit, the sealed bids will be publicly opened and posted at the time and place set in the prospectus.

If a bidder, present at a bid opening, has submitted bids on more than one sale, that bidder may withdraw their unopened bid envelopes or announce the withdrawal of their online bid after being declared the successful bidder on one sale.

6. Award of Contract (1/11)

Award of the contract will be made to the Bidder whose bid, conforming to the prospectus, is most advantageous to the State of Michigan on the basis of total value at rates bid for the estimated quantities. The State reserves the right to reject any bid or waive any minor irregularity in bids received. A written award mailed (or otherwise furnished) to the successful Bidder shall be deemed to result in a binding contract without further action by either party.

7. Down Payment (1/11)

The Bidder to whom award is made must make a down payment within 21 days of the sale award. The amount of the down payment will be calculated as shown in the Bond and Payment Schedule of this prospectus. Only cash may be used to meet this requirement.

8. Performance Security (1/11)

As guarantee of faithful performance, a cash bond, certificate of deposit, surety bond or irrevocable letter of credit (LOC) is required within 21 days of the sale award. The amount of the performance security is shown in the Bond and

Payment Schedule of this prospectus. If an LOC or surety is used, the coverage must extend for at least 6 months beyond the contract expiration.

9. Worker's Compensation (10/22)

Purchaser shall obtain worker's compensation insurance to cover claims under Michigan's Worker's Disability Compensation Act of 1969 or similar employee benefit act of any other state applicable to an employee. Verification of Worker's Disability Compensation Act Compliance must be completed and submitted within 21 days of contract award and prior to the issuance of the timber sale contract. In addition, if applicable, Notice of Exclusion or Certificate of Insurance must also be submitted.

10. Timber Sale Contract (10/22)

Additional conditions and requirements common to all timber sales are listed on the timber sale contract (R4031) and are available on line at www.michigan.gov/timber. Contact the Unit Manager for additional information or a sample contract. Within 21 days of the date of the award letter, the bidder must sign the contract and provide the required down payment, performance security, and verification of worker's disability compensation. The down payment and performance security shall be in accordance with the provisions of the timber sale contract, in the sums stated in this prospectus. If these actions are not taken, then the Bidder, the Bidder's corporation, and the corporation's principals may not be permitted to bid on State timber sales for a period of 3 months after the first offense, 6 months after the second offense, and 1 year after the third offense. An offense will only be counted against the Bidder for 5 years. In addition, the Bidder certifies that if awarded this contract, the Bidder will complete the timber sale contract in accordance with its terms and any modifications thereof including requirements to purchase, cut, and remove the included timber by the expiration date.

Payment Unit values in the State Forest Timber Sale Contract are calculated based on the advertised value of the Payment Unit as a percentage of the total advertised value of the contract. The advertised value of each Payment Unit is given in the Description of Timber by Payment Unit table on the Timber Sale Information page. For example, if the value of Payment Unit 1 is advertised as \$1,500 and the total Timber Sale value is advertised as \$10,000, the contract price for Payment Unit 1 will be 15% of the total bid price ($\$1,500/\$10,000 * 100$).

11. Disclaimer of Estimates and Bidder's Warranty of Inspection (10/22)

Before submitting this bid, the Bidder is advised and cautioned to inspect the sale area, review the requirements of the sale contract, and take other steps as may be reasonably necessary to ascertain the location, estimated volumes, construction estimates, and operating costs of the proposed sale. Failure to do so will not relieve the Bidder from responsibility for completing the contract.

The Bidder warrants that this bid is submitted solely on the basis of the Bidder's examination and inspection of the quality and quantity of the timber offered for sale and the Bidder's opinion of the value thereof and the costs of recovery. No reliance should be placed on the State of Michigan's estimates of timber quality, quantity or costs of recovery. Bidder further acknowledges that the State of Michigan: (i) expressly disclaims any warranty of fitness of timber for any purpose; (ii) offers this timber as is without any warranty of quality (merchantability) or quantity and (iii) expressly disclaims any warranty as to the quantity or quality of timber sold.

12. Certification and Chain-of-Custody (10/22)

Unless otherwise indicated in the contract under section 7 – Other Conditions of the Sale Specific Conditions & Requirements, the area encompassed by this timber sale is certified to the standards of the Forest Stewardship Council (FSC) - Certificate #SCS-FM/COC-00090N and the Sustainable Forestry Initiative (SFI) - Certificate #NSF-SFIS-5Y031-SF5. Forest products from this sale may be delivered to the mill as "FSC 100% and / or SFI certified" as long as the contractor hauling the forest products is chain-of-custody (COC) certified or covered under a COC certificate from the destination mill. The purchaser is responsible for maintaining COC after leaving the sale area.

13. Good Neighbor Authority (GNA) Requirements (10/22)

If the name of this timber sales contains the acronym GNA, it is authorized by the Good Neighbor Authority (GNA) and covered by various agreements between the U.S. Forest Service and the State. The timber sale occurs on federal land and the following conditions apply:

GNA contracts on US Forest Service land will not be awarded to purchasers on the Federal list of excluded parties. The System for Award Management (SAM) will be checked for active excluded parties prior to award of contract. In

addition, the Bidder to whom award is made must complete an Assurance Regarding Felony Conviction or Tax Delinquent Status for Corporate Applicants (AD-3031).

14. Good Neighbor Authority (GNA) Requirements, con't (10/22)

Bidder certifies, by signing this bid form, that to the best of Bidder's knowledge that the following representations are accurate and complete.

- a. That the Bidder and its principals are not presently debarred, suspended, proposed for debarment, declared ineligible, or voluntary excluded from timber sales (covered transactions) by any Federal department or agency.
- b. That the Bidder and its principals have not within a 3-year period preceding this bid been convicted of or had a civil judgment rendered against them for commission of fraud or a criminal offense in connection with obtaining , attempting to obtain, or performing a public (Federal, State, or local) transaction or contract under a public transaction; violation of Federal or State antitrust statutes or commission of embezzlement, theft, forgery, bribery, falsification or destruction of records, making false statements, or receiving stolen property.
- c. That the Bidder and its principals are not presently indicted for or otherwise criminally or civilly charged by a governmental entity (Federal, State, or local) with commission of any of the offenses enumerated in paragraph b of this certification.
- d. That the Bidder and its principals have not within a 3-year period preceding this bid had one or more public transactions (Federal, State, or local) terminated for breach or default of a timber or forest product contract.

Bidders that cannot certify this requirement, in whole or in part, shall submit an explanation with their bid.

Scott Bowen
Director

TIMBER SALE INFORMATION

Thru the Pine Aspen (73-001-24)
T18N, R01E, SEC. 13; T18N, R01E, SEC. 24.
Gladwin County (Advertised Price \$65,986.55)

SALE NOTE: Payment Units 1, 2, 4, and 5 have inclusion of wetter ground, so rutting could become an issue. Also access to the units are through a gate that will need to be locked at the end of each day. In addition, there are several intermittent drainages that will need to be crossed to access portions of the units. These will require use of corduroy, crane mats and or equalization tubes. The drainage will need to be restored to their nature grade at the end of the sale.

A timber sale contract for this lump sum, sealed bid timber sale will be awarded to the responsible bidder offering the highest sealed bid price. All units of volume listed below were estimated using the Inventory Manager computer program and the new Michigan taper model. Bids must be at or above the following advertised price for each product and species:

<u>PRODUCTS & SPECIES</u>	<u>ESTIMATED UNITS*</u>		<u>ADVERTISED PRICE</u>
Sawtimber			
Black/Red (Hybrid) Oak	13.7	MBF	\$ 89.00 / MBF
Mixed Aspen	102.8	MBF	\$ 61.00 / MBF
Red Maple	35.2	MBF	\$ 52.00 / MBF
Red Pine	12.6	MBF	\$ 110.00 / MBF
White Pine	68.2	MBF	\$ 59.00 / MBF
Pulpwood			
Black/Red (Hybrid) Oak	105	Cords	\$ 19.90 / Cord
Mixed Aspen	1,427	Cords	\$ 25.85 / Cord
Mixed Hardwood	438	Cords	\$ 19.50 / Cord
Red Pine	26	Cords	\$ 43.50 / Cord
White Pine	98	Cords	\$ 26.60 / Cord

* The total volume is statistically estimated within plus (+) or minus (-) 18.35 percent. There are an estimated 2,637 cords on this timber sale, plus or minus 484 cords at the 95% confidence level. The estimated units are final and not subject to adjustment. Prospective bidders are urged to examine this timber and to make their own estimates of quantity and quality.

BOND AND PAYMENT SCHEDULE:

1. A bond in the amount of \$6,599.00 to insure faithful performance of the conditions of the contract will be deposited by the successful bidder within 21 days of the sale award.
2. Cutting in any sale or unit without the required advance payment would be considered a trespass.
3. Total payment must be paid in advance or according to the following schedule :
 - (a) Ten percent (10%) of the sale value must be paid within 21 days of the sale award.
 - (b) The 10% down payment will be credited towards the first unit cut.
 - (c) Payment for each of the following units must be made before cutting begins in that unit:

<u>PAYMENT UNIT NUMBER</u>	<u>PERCENT OF TOTAL SALE VALUE</u>
01	27.2%
02	29.6%
03	18.7%
04	13.4%
05	7.6%
06	3.5%

4. If no cutting takes place, the 10% down payment will not be refunded.
5. Operations on the contract issued will terminate on 09/30/2027.

SALE STATISTICS

Volumes were calculated in cubic feet using the Michigan taper model. Cubic foot volume includes all wood inside bark for the product indicated. For display purposes, cubic feet were converted to cords and MBF using a simple conversion factor, e.g. 79 cubic feet per cord and 185 cubic feet per MBF. The cubic foot volumes are precise; the cords and MBF volumes are not. Cubic foot volume cannot be directly converted to cords or boards with precision.

SALE VOLUMES

The total estimated sale volume may not equal the sum of the species/products due to the nature of statistical calculations associated with double sampling methodology.

VOLUME			STATISTICAL RANGE IN CORDS	
TOTAL CUBIC FEET	TOTAL CORDS	PERCENT ERROR	MINIMUM	MAXIMUM
208,317	2,637	18.35%	2,153	3,121

VDU VOLUMES

A VDU is a Volume Determination Unit. Volumes and their associated statistics are calculated at the VDU level and summarized to the sale level. There is often a one to one relationship between a VDU and a Payment Unit, but not always, depending on the cruise design. Refer to the VDU TO PAYMENT UNIT table.

	VOLUME			RANGE IN CORDS	
VDU	TOTAL CUBIC FEET	TOTAL CORDS	PERCENT ERROR	MINIMUM	MAXIMUM
28	45,024	570	24.53%	430	710
29	38,359	486	47.23%	256	715
187	117,367	1,486	27.49%	1,077	1,894
195	7,567	96	72.84%	26	166
TOTAL:	208,317	2,637		1,790	3,484

VDU TO PAYMENT UNIT

When a VDU is associated with more than one Payment Unit (PU), the VDU volumes are assigned to the PU based on acres of the VDU within the PU.

VDU	VDU ACRES	PU	PU ACRES
28	35.7	4	22.8
		5	12.9
29	12.6	3	12.6
187	45.5	1	21.8
		2	23.7
195	3.7	6	3.7
TOTAL:	97.5		97.5

DESCRIPTION OF TIMBER BY PAYMENT UNIT (PU)

PU	MARKET GROUP	PRODUCT	QUANTITY	UNIT	ACRES	ADVERTISE PRICE
1	Black/Red (Hybrid	Sawtimber	4.9	MBF	21.8	\$17,934.75
	Mixed Aspen		25.4	MBF		
	<i>B. T. Aspen</i>		13.0	<i>MBF</i>		
	<i>Quaking Aspen</i>		12.4	<i>MBF</i>		
	Red Maple		9.7	MBF		
	Red Pine	Pulpwood	4.4	MBF		
	White Pine		5.1	MBF		
	Black/Red (Hybrid		39	Cords		
	Mixed Aspen		461	Cords		
	<i>B. T. Aspen</i>		108	<i>Cords</i>		
	<i>Quaking Aspen</i>		353	<i>Cords</i>		
	Mixed Hardwood		85	Cords		
	<i>Black Cherry</i>		4	<i>Cords</i>		
	<i>Paper Birch</i>		1	<i>Cords</i>		
	<i>Red Maple</i>		80	<i>Cords</i>		
	Red Pine		1	Cords		
	White Pine		10	Cords		
2	Black/Red (Hybrid	Sawtimber	5.3	MBF	23.7	\$19,501.90
	Mixed Aspen		27.6	MBF		
	<i>B. T. Aspen</i>		14.1	<i>MBF</i>		
	<i>Quaking Aspen</i>		13.5	<i>MBF</i>		
	Red Maple		10.6	MBF		
	Red Pine	Pulpwood	4.7	MBF		
	White Pine		5.5	MBF		
	Black/Red (Hybrid		42	Cords		
	Mixed Aspen		500	Cords		
	<i>B. T. Aspen</i>		117	<i>Cords</i>		
	<i>Quaking Aspen</i>		383	<i>Cords</i>		
	Mixed Hardwood		93	Cords		
	<i>Black Cherry</i>		5	<i>Cords</i>		
	<i>Paper Birch</i>		2	<i>Cords</i>		
	<i>Red Maple</i>		86	<i>Cords</i>		
	Red Pine		2	Cords		
	White Pine		11	Cords		
3	Black/Red (Hybrid	Sawtimber	1.5	MBF	12.6	\$12,371.95
	Mixed Aspen		38.6	MBF		
	<i>B. T. Aspen</i>		38.6	<i>MBF</i>		
	Red Maple		1.8	MBF		
	White Pine	Pulpwood	1.8	MBF		
	Black/Red (Hybrid		2	Cords		
	Mixed Aspen		339	Cords		
	<i>B. T. Aspen</i>		253	<i>Cords</i>		
	<i>Quaking Aspen</i>		86	<i>Cords</i>		
	Mixed Hardwood		37	Cords		
	<i>Red Maple</i>		37	<i>Cords</i>		
	White Pine		6	Cords		
4	Black/Red (Hybrid	Sawtimber	1.3	MBF	22.8	\$8,842.75
	Mixed Aspen		7.2	MBF		
	<i>B. T. Aspen</i>		7.2	<i>MBF</i>		
	Red Maple		8.4	MBF		
	Red Pine		2.2	MBF		
	White Pine	Pulpwood	23.9	MBF		
	Black/Red (Hybrid		11	Cords		
	Mixed Aspen		81	Cords		
	<i>B. T. Aspen</i>		61	<i>Cords</i>		
	<i>Quaking Aspen</i>		20	<i>Cords</i>		

DESCRIPTION OF TIMBER BY PAYMENT UNIT (PU), CON'T

PU	MARKET GROUP	PRODUCT	QUANTITY	UNIT	ACRES	ADVERTISE PRICE		
4 con't	Mixed Hardwood	Pulpwood	129	Cords				
	<i>Paper Birch</i>		6	<i>Cords</i>				
	<i>Red Maple</i>		123	<i>Cords</i>				
	Red Pine		15	Cords				
	White Pine		27	Cords				
5	Black/Red (Hybrid	Sawtimber	0.7	MBF	12.9	\$5,021.60		
	Mixed Aspen		4.0	MBF				
	<i>B. T. Aspen</i>		4.0	<i>MBF</i>				
	Red Maple		4.7	MBF				
	Red Pine		1.3	MBF				
	White Pine	13.6	MBF	Pulpwood	7	Cords		
	Mixed Aspen	46	Cords					
	<i>B. T. Aspen</i>	35	<i>Cords</i>					
	<i>Quaking Aspen</i>	11	<i>Cords</i>					
	Mixed Hardwood	73	Cords					
	<i>Paper Birch</i>	4	<i>Cords</i>					
	<i>Red Maple</i>	69	<i>Cords</i>					
	Red Pine	8	Cords					
	White Pine	16	Cords					
	6	White Pine	Sawtimber		18.3	MBF		
Black/Red (Hybrid		Pulpwood	4	Cords				
Mixed Hardwood			21	Cords				
<i>Paper Birch</i>			7	<i>Cords</i>				
<i>Red Maple</i>			14	<i>Cords</i>				
White Pine			28	Cords				
TOTAL:			232.5	MBF				
TOTAL:			2,094	Cords				

Sale Specific Conditions & Requirements

Sale Name: Thru the Pine Aspen

Sale Number: 73-001-24 Seq#: 2

1 - Sale Area

1.2 - Boundaries

1.2.1 - Painted Boundaries (9/19)

The sale boundary and Payment Unit boundaries are marked and identified by red and yellow paint. Exterior sale boundary lines against state are marked with red paint. Interior Payment Unit boundaries are marked with yellow paint. Yellow painted trees designating an interior Payment Unit boundary are only to be cut when all surrounding Payment Units have been paid, unless marked with green paint above and below stump height.

2 - Timber Specifications

2.1 - Included Timber

2.1.1 - Clearcut Unit(s) with Unmerchantable Trees (6/14)

Within Payment Unit(s) 1-5, cut all trees that are two (2) inches or more at DBH, except do not cut trees marked with green paint above and below stump height.

2.1.3 - Cut Tree Marked Unit(s) (12/08)

Within Payment Unit(s) 6, all trees are designated for cutting when marked with orange paint above and below stump height, regardless of merchantability. In addition, all aspen and maple that are two (2) inches or more at DBH are designated for cutting regardless of merchantability.

3 - Payments

3.4 - Damaged Timber

3.4.1 - Damaged timber (7/16)

General Condition and Requirement 3.4 Damaged Timber, defines liquidated damages for undesignated live merchantable trees which are cut or injured. No damage is acceptable to undesignated live merchantable trees.

Within the Sale Area, if more than 5% of trees (> 4.5" DBH) within a specified area of the sale are damaged, liquidated damages will be assessed for all trees damaged. Rates will be in accordance with General Condition and Requirement 3.4 Damaged Timber.

4 - Transportation

4.1 - Construction

4.1.5 - Culverts (5/14)

The trail through Payment Units 1 and 2 may require the installation of a temporary culverts, equalization tube, or crane mats for crossing a natural drainage-way. The drainage-way is located between Payment Units 1 and 2. The crossing is to be removed, fill shall be removed, and the grade is to be restored. Soils shall be maintained and left in a non-erodible condition as directed by the Sale Administrator and as specified in the BMP manual.

4.1.12 - No New Roads (1/12)

No new roads will be permitted in any Payment Unit. All operations are limited to existing roads and the closed trail that goes through Payment Units 1 and 2. Skid trails only will be allowed. If the trail that goes through Payment Units 1 and 2 is reopened it will need to be closed off with slash and berms and made impassable to vehicles.

4.2 - Maintenance

4.2.5 - Two Wheel Drive Condition (2/04)

All existing trail roads on and adjacent to the Sale Area must be passable by two-wheel drive traffic for the duration of the sale.

4.4 - Access

4.4.3 - Access gate (12/08)

The access gate must be locked at the completion of each day unless otherwise approved by the Unit Manager or his/her representative.

5 - Operations

5.2 - Conduct of Operations

5.2.2 - Hazard Trees/Snags

5.2.2.1 - Den Trees (10/16)

Obvious hollow and/or den trees shall be protected and left standing unless they are a safety hazard.

5.2.4 - Dead and Down Creation

5.2.4.4 - Dead and Down Creation, Grouse (6/18)

To encourage grouse and other wildlife, in Payment Unit(s) 1-5 leave one 12-inch or larger diameter whole tree on the ground for every 3 acres. Trees should be scattered throughout the sale and at least two chains from any roads, two-tracks, or trails open to vehicles, or positioned per the Sale Administrator's instructions. Stumps must be at least 3 feet tall.

5.2.22 - Operating Caution

5.2.22.1 - Operating Caution (6/11)

It is recommended, but not required, that within Payment Unit(s) 1-5, cutting, skidding, and hauling occur during dry summer or frozen winter conditions. The reason for the recommendation is because portions of the Payment Units are seasonally wet and rutting may become a problem.

5.4 - Soil Protection

5.4.1 - Rutting Restriction, General (7/16)

Operations are to cease immediately if equipment and weather conditions result in rutting of roads and/or skid trails which is 12 inches or greater in depth and 50 feet in length. The Unit Manager or his/her representative may restrict hauling and/or skidding if ruts exceed the specified depth. With the Unit Manager or his/her representative's approval, the Purchaser may return to the area when the risk of rutting has decreased.

6 - Safety and Fire Prevention

6.2 - Signing

6.2.1 - Road Posting (10/20)

The Purchaser is responsible for posting and maintaining caution signs on the access road prior to beginning operations. The road must be posted at parking area near the access gate to warn of logging activity and truck traffic. Signs must be removed when harvest operations are suspended or completed. The Purchaser will provide these signs.



TIMBER SALE MAP

This information provided by authority of Part 525, 1994 PA 451, as amended.

Sale Number

73-001-24

Date

07/08/2024

Forest Management Unit

County

Mapped By: Steven Nyhoff

Scale

Page

Of

Gladwin Management Unit

Gladwin

Cruised By: Steven Nyhoff

1:15,840

1

1

Township
18N

Range
02E

Section(s) and
Subdivision(s) S13 SENE, NESW, SE; S24 NENE

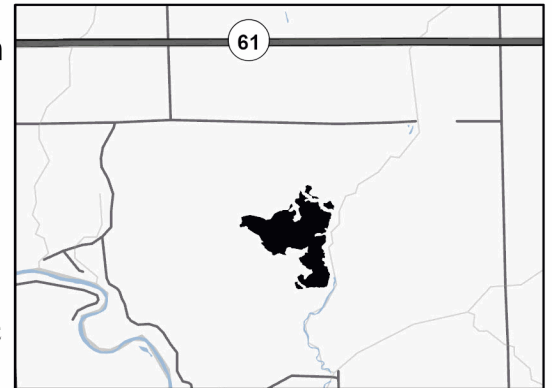
Cover Type

A = Aspen	J = Jack Pine	O = Oak	U = Upland Brush
B = Paper Birch	K = Rock	P = Lowland Poplar	UM = Upland Mix Forest
C = Cedar	L = Lowland Brush	Q = Mixed Swamp Conifer	V = Bog or Marsh
D = Treed Bog	LM = Lowland Mix Forest	R = Red Pine	W = White Pine
E = Swamp Hardwoods	M = Maple, Beech, Birch	S = Black Spruce	X = Non Stocked
F = Spruce/Fir	MC = Mixed Conifer	T = Tamarack	Y = Sand
G = Grass	MD = Mixed Deciduous	Z = Water	
H = Hemlock	N = Marsh		

Density

0 = Non Stocked	5 = Pole Timber Medium
1 = Seedling Sapling Poor	6 = Pole Timber Well
2 = Seedling Sapling Medium	7 = Saw Timber Poor
3 = Seedling Sapling Well	8 = Saw Timber Medium
4 = Pole Timber Poor	9 = Saw Timber Well

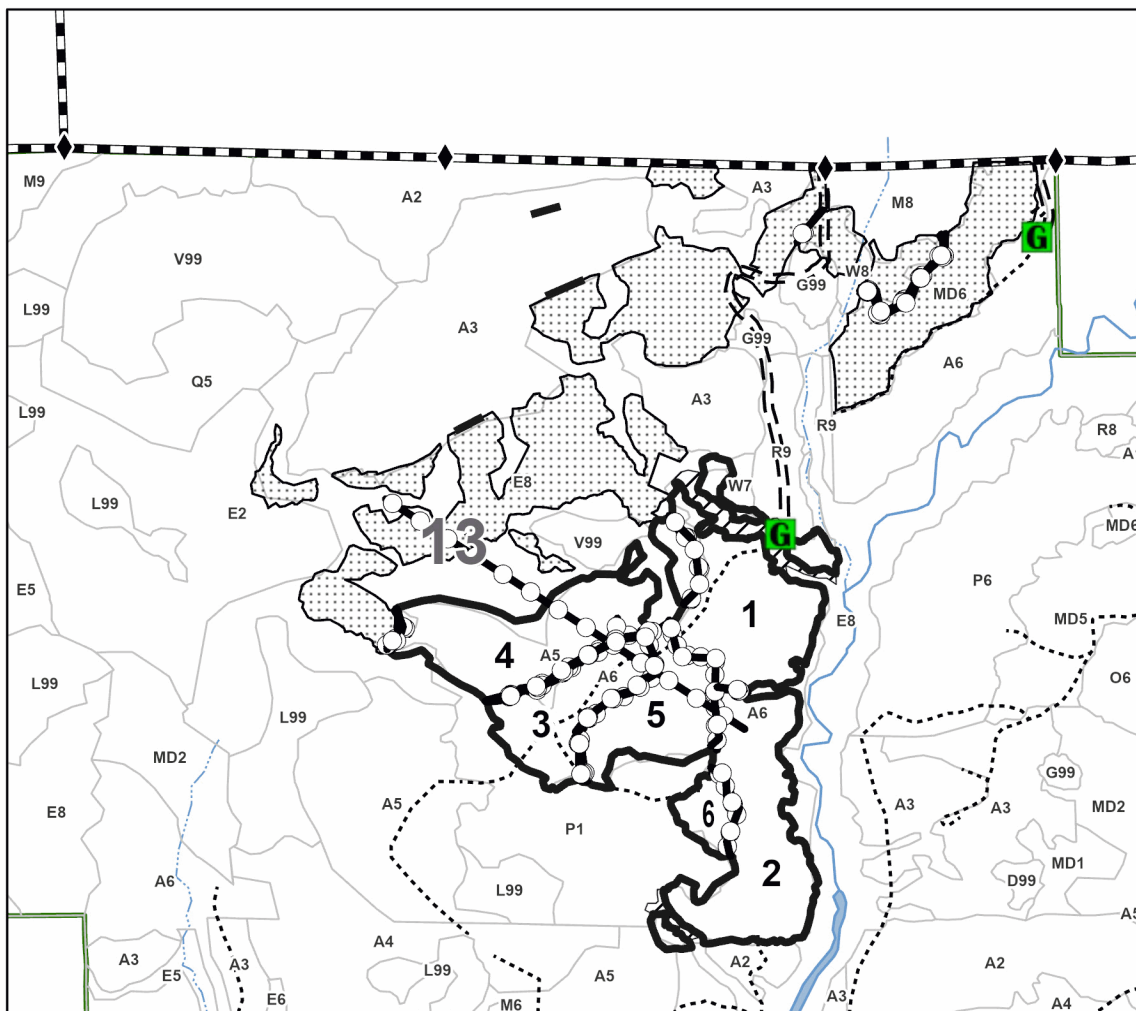
Locator Map 1:75,000



**Thru The Pine Aspen
97.5 Acres**

Payment Unit Number	Acres	Payment Unit Number	Acres
1	21.8	4	22.8
2	23.7	5	12.9
3	12.6	6	3.7

0 0.25 0.5 1 Miles



Legend

- Against State (Red)
- Payment Unit (Yellow)
- - - Forest Access Route
- Administrative Access Only
- - - Government Gravel/Dirt
- Recreational Trails
- ◆ Field Grade Corner
- ◆ Survey Grade Corner
- G** Gate

Use QR Code to
open Map in App



TIMBER SALE INFORMATION

Heil Deer Select (73-002-24)

T18N, R01E, SEC. 13; T18N, R02E, SEC. 18; T18N, R02E, SEC. 7.

Gladwin County (Advertised Price \$48,154.80)

SALE NOTE: All sale units have areas of wetter ground, so rutting may become an issue. The sale is restricted to dry or frozen conditions between July 15 to March 31. The use of the tops to corduroy between harvest areas will be needed in Payment Units 2 and 3. Within Payment Unit 6 tops may be needed to keep the logging equipment from rutting. The trail behind the gate by Payment Unit 5 should be used to limit the creation of trails.

A timber sale contract for this lump sum, sealed bid timber sale will be awarded to the responsible bidder offering the highest sealed bid price. All units of volume listed below were estimated using the Inventory Manager computer program and the new Michigan taper model. Bids must be at or above the following advertised price for each product and species:

<u>PRODUCTS & SPECIES</u>	<u>ESTIMATED UNITS*</u>		<u>ADVERTISED PRICE</u>
Sawtimber			
Black/Red (Hybrid) Oak	43.3	MBF	\$ 89.00 / MBF
Jack Pine	12.8	MBF	\$ 53.00 / MBF
Mixed Aspen	51.2	MBF	\$ 61.00 / MBF
Red Maple	180.4	MBF	\$ 52.00 / MBF
Red Pine	24.0	MBF	\$ 110.00 / MBF
White Pine	30.1	MBF	\$ 59.00 / MBF
Pulpwood			
Jack Pine	112	Cords	\$ 18.70 / Cord
Mixed Aspen	136	Cords	\$ 25.85 / Cord
Mixed Oak	145	Cords	\$ 19.90 / Cord
Paper Birch	50	Cords	\$ 25.10 / Cord
Red Maple	669	Cords	\$ 19.50 / Cord
Red Pine	36	Cords	\$ 43.50 / Cord
White Pine	88	Cords	\$ 26.60 / Cord

* The total volume is statistically estimated within plus (+) or minus (-) 13.06 percent. There are an estimated 2,039 cords on this timber sale, plus or minus 266 cords at the 95% confidence level. The estimated units are final and not subject to adjustment. Prospective bidders are urged to examine this timber and to make their own estimates of quantity and quality.

BOND AND PAYMENT SCHEDULE:

1. A bond in the amount of \$4,815.00 to insure faithful performance of the conditions of the contract will be deposited by the successful bidder within 21 days of the sale award.
2. Cutting in any sale or unit without the required advance payment would be considered a trespass.
3. Total payment must be paid in advance or according to the following schedule:
 - (a) Ten percent (10%) of the sale value must be paid within 21 days of the sale award.
 - (b) The 10% down payment will be credited towards the first unit cut.
 - (c) Payment for each of the following units must be made before cutting begins in that unit:

<u>PAYMENT UNIT NUMBER</u>	<u>PERCENT OF TOTAL SALE VALUE</u>
01	17.5%
02	21.6%
03	13.4%
04	2.4%
05	17.9%
06	17.0%
07	10.2%

4. If no cutting takes place, the 10% down payment will not be refunded.
5. Operations on the contract issued will terminate on 09/30/2028.

SALE STATISTICS

Volumes were calculated in cubic feet using the Michigan taper model. Cubic foot volume includes all wood inside bark for the product indicated. For display purposes, cubic feet were converted to cords and MBF using a simple conversion factor, e.g. 79 cubic feet per cord and 185 cubic feet per MBF. The cubic foot volumes are precise; the cords and MBF volumes are not. Cubic foot volume cannot be directly converted to cords or boards with precision.

SALE VOLUMES

The total estimated sale volume may not equal the sum of the species/products due to the nature of statistical calculations associated with double sampling methodology.

VOLUME			STATISTICAL RANGE IN CORDS	
TOTAL CUBIC FEET	TOTAL CORDS	PERCENT ERROR	MINIMUM	MAXIMUM
161,047	2,039	13.06%	1,772	2,305

VDU VOLUMES

A VDU is a Volume Determination Unit. Volumes and their associated statistics are calculated at the VDU level and summarized to the sale level. There is often a one to one relationship between a VDU and a Payment Unit, but not always, depending on the cruise design. Refer to the VDU TO PAYMENT UNIT table.

	VOLUME			RANGE IN CORDS	
VDU	TOTAL CUBIC FEET	TOTAL CORDS	PERCENT ERROR	MINIMUM	MAXIMUM
75	30,204	382	25.22%	286	479
86	3,641	46	74.08%	12	80
87	28,898	366	42.24%	211	520
103	21,925	278	29.82%	195	360
138	17,599	223	34.56%	146	300
186	58,780	744	22.19%	579	909
TOTAL:	161,047	2,039		1,429	2,648

VDU TO PAYMENT UNIT

When a VDU is associated with more than one Payment Unit (PU), the VDU volumes are assigned to the PU based on acres of the VDU within the PU.

VDU	VDU ACRES	PU	PU ACRES
75	19.6	1	19.6
86	6.8	4	6.8
87	18.6	5	18.6
103	17.6	6	17.6
138	26.2	7	26.2
186	62.0	2	38.3
		3	23.7
TOTAL:	150.8		150.8

DESCRIPTION OF TIMBER BY PAYMENT UNIT (PU)

PU	MARKET GROUP	PRODUCT	QUANTITY	UNIT	ACRES	ADVERTISE PRICE	
1	Black/Red (Hybrid	Sawtimber	8.5	MBF	19.6	\$8,420.65	
	Mixed Aspen		2.1	MBF			
	<i>B. T. Aspen</i>	2.1	<i>MBF</i>				
	Red Maple	47.7	MBF				
	White Pine	4.3	MBF				
	Mixed Aspen	Pulpwood	13	Cords			
	<i>B. T. Aspen</i>		6	<i>Cords</i>			
	<i>Quaking Aspen</i>		7	<i>Cords</i>			
	Mixed Oak		20	Cords			
	<i>/Red (Hybrid) Oak</i>		20	<i>Cords</i>			
	Paper Birch		17	Cords			
	<i>Paper Birch</i>		17	<i>Cords</i>			
	Red Maple		184	Cords			
	White Pine		2	Cords			
2	Black/Red (Hybrid		Sawtimber	4.6	MBF	38.3	\$10,396.60
	Mixed Aspen	18.2		MBF			
	<i>B. T. Aspen</i>	18.2	<i>MBF</i>				
	Red Maple	56.9	MBF				
	White Pine	6.4	MBF				
	Mixed Aspen	Pulpwood	42	Cords			
	<i>B. T. Aspen</i>		42	<i>Cords</i>			
	Mixed Oak		20	Cords			
	<i>/Red (Hybrid) Oak</i>		20	<i>Cords</i>			
	Paper Birch		15	Cords			
	<i>Paper Birch</i>		<i>Sawtimber</i>	3.7	<i>MBF</i>		
	<i>Paper Birch</i>			<i>Pulpwood</i>	8		
	Red Maple		156		Cords		
	White Pine		24	Cords			
3	Black/Red (Hybrid		Sawtimber	2.8	MBF	23.7	\$6,431.90
	Mixed Aspen	11.3		MBF			
	<i>B. T. Aspen</i>	11.3	<i>MBF</i>				
	Red Maple	35.2	MBF				
	White Pine	3.9	MBF				
	Mixed Aspen	Pulpwood	26	Cords			
	<i>B. T. Aspen</i>		26	<i>Cords</i>			
	Mixed Oak		12	Cords			
	<i>/Red (Hybrid) Oak</i>		12	<i>Cords</i>			
	Paper Birch		10	Cords			
	<i>Paper Birch</i>		<i>Sawtimber</i>	2.3	<i>MBF</i>		
	<i>Paper Birch</i>			<i>Pulpwood</i>	5		
	Red Maple		96		Cords		
	White Pine		15	Cords			
4	White Pine		Sawtimber	6.3	MBF	6.8	\$1,139.90
	Mixed Aspen	Pulpwood	20	Cords			
	<i>B. T. Aspen</i>		20	<i>Cords</i>			
	Mixed Oak		3	Cords			
	<i>/Red (Hybrid) Oak</i>		3	<i>Cords</i>			
	Red Maple		3	Cords			
	White Pine		5	Cords			
5	Black/Red (Hybrid	Sawtimber	19.5	MBF	18.6	\$8,642.15	
	Mixed Aspen		9.2	MBF			
	<i>Quaking Aspen</i>	9.2	<i>MBF</i>				
	Red Maple	20.5	MBF				
	White Pine	3.5	MBF				
	Mixed Aspen	Pulpwood	13	Cords			
	<i>Quaking Aspen</i>		13	<i>Cords</i>			

DESCRIPTION OF TIMBER BY PAYMENT UNIT (PU), CON'T

PU	MARKET GROUP	PRODUCT	QUANTITY	UNIT	ACRES	ADVERTISE PRICE			
5 con't	Mixed Oak	Pulpwood	75	Cords					
	/Red (Hybrid) Oak		69	Cords					
	White Oak		6	Cords					
	Red Maple		120	Cords					
	White Pine		34	Cords					
6	Black/Red (Hybrid	Sawtimber	4.7	MBF	17.6	\$8,200.80			
	Jack Pine	12.8	MBF						
	Red Pine	24.0	MBF						
	White Pine	5.7	MBF						
	Jack Pine	Pulpwood	112	Cords					
	Mixed Aspen		6	Cords					
	Quaking Aspen		6	Cords					
	Mixed Oak		5	Cords					
	/Red (Hybrid) Oak		5	Cords					
	Red Pine		36	Cords					
	White Pine		8	Cords					
	7		Black/Red (Hybrid	Sawtimber			3.2	MBF	26.2
		Mixed Aspen	10.4	MBF					
		B. T. Aspen	1.3	MBF					
Quaking Aspen		9.1	MBF						
Red Maple		20.1	MBF						
Mixed Aspen		Pulpwood	16	Cords					
B. T. Aspen			3	Cords					
Quaking Aspen			13	Cords					
Mixed Oak			10	Cords					
/Red (Hybrid) Oak			10	Cords					
Paper Birch			8	Cords					
Paper Birch			8	Cords					
Red Maple			110	Cords					
TOTAL:			341.8	MBF					
TOTAL:			1,236	Cords					

Sale Specific Conditions & Requirements

Sale Name: Heil Deer Select

Sale Number: 73-002-24 Seq#: 2

1 - Sale Area

1.2 - Boundaries

1.2.1 - Painted Boundaries (9/19)

The sale boundary and Payment Unit boundaries are marked and identified by blue, red and yellow paint. Exterior sale boundary lines against private property are marked with blue paint. Exterior sale boundary lines against state are marked with red paint. Interior Payment Unit boundaries are marked with yellow paint.

2 - Timber Specifications

2.1 - Included Timber

2.1.1 - Clearcut Unit(s) with Unmerchantable Trees (6/14)

Within Payment Unit(s) 1 and 6, cut all trees that are two (2) inches or more at DBH, except do not cut trees marked with green paint above and below stump height.

2.1.3 - Cut Tree Marked Unit(s) (12/08)

Within Payment Unit(s) 2, 3, 4 and 7, all trees are designated for cutting when marked with orange paint above and below stump height, regardless of merchantability. In addition, within Payment Unit 7, all aspen that are two (2) inches or more at DBH are designated for cutting, regardless of merchantability.

2.1.7 - Leave Tree Marked Unit(s) (6/14)

Within Payment Unit(s) 5, all trees which meet minimum piece specifications in 2.2 Utilization are designated for cutting, except do not cut trees marked with green paint above and below stump height.

2.2 - Utilization

2.2.9 - No Chipping Permitted (12/08)

Within Payment Unit(s) 2, 3, 4, 6 and 7, no chipping is permitted. The slash needs to be evenly distributed.

3 - Payments

3.4 - Damaged Timber

3.4.1 - Damaged timber (7/16)

General Condition and Requirement 3.4 Damaged Timber, defines liquidated damages for undesignated live merchantable trees which are cut or injured. In addition, extreme care should be taken to avoid damage to tree seedlings and saplings.

Within Payment Units 2, 3, 4, 5 and 7, if more than 25% of the tree seedlings or saplings (1/4" to 4.5" DBH) within a specified portion of the Sale Area are damaged, liquidated damages will be assessed at \$500 per acre for all acreage within that specified portion of the Sale Area that was damaged.

No damage is acceptable to undesignated live merchantable trees. Within the Sale Area, if more than 5% of trees (> 4.5" DBH) within a specified area of the sale are damaged, liquidated damages will be assessed for all trees damaged. Rates will be in accordance with General Condition and Requirement 3.4 Damaged Timber.

4 - Transportation

4.2 - Maintenance

4.2.5 - Two Wheel Drive Condition (2/04)

All existing trail roads on and adjacent to the Sale Area must be passable by two-wheel drive traffic for the duration of the sale.

4.4 - Access

4.4.3 - Access gate (12/08)

The access gate must be locked at the completion of each day unless otherwise approved by the Unit Manager or his/her representative.

5 - Operations

5.2 - Conduct of Operations

5.2.2 - Hazard Trees/Snags

5.2.2.1 - Den Trees (10/16)

Obvious hollow and/or den trees shall be protected and left standing unless they are a safety hazard.

5.2.3 - Operating Restrictions

5.2.3.1 - Operating Restrictions (9/11)

Within Payment Unit(s) 1-7, unless changed by written agreement, cutting, skidding, and hauling are limited to the period of July 15 to March 31. This restriction is because the Payment Units have large, seasonally wet areas and must be harvested in dry or frozen conditions to avoid rutting and environmental damage.

5.2.3.4 - Oak Wilt Restriction, No Exceptions (1/18)

Within Payment Units 1, 2, 3, 4, 5 and 7, cutting, skidding, hauling within the sale and brushing of access roads to the sale are not permitted during the period of April 15 to July 15. No exceptions will be granted. This is necessary to reduce the spread of oak wilt.

5.4 - Soil Protection

5.4.1 - Rutting Restriction, General (7/16)

Operations are to cease immediately if equipment and weather conditions result in rutting of roads and/or skid trails which is 12 inches or greater in depth and 50 feet in length. The Unit Manager or his/her representative may restrict hauling and/or skidding if ruts exceed the specified depth. With the Unit Manager or his/her representative's approval, the Purchaser may return to the area when the risk of rutting has decreased.



TIMBER SALE MAP

This information provided by authority of Part 525, 1994 PA 451, as amended.

Sale Number

73-002-24

Date

08/19/2024

Forest Management Unit

County

Mapped By: Steven Nyhoff

Scale

Page

Of

Gladwin Management Unit

Gladwin

Cruised By: Steven Nyhoff

1:18,000

1

2

Township
18N

Range
02E

Section(s) and

Subdivision(s) S17 NWSW,; S13 S1/2NW, NE, NESW, NWSE; S18 NWNW, S1/2NW, S1/2NW, E1/2SE

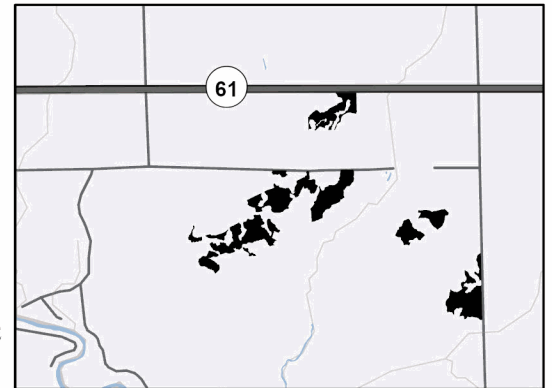
Cover Type

A = Aspen	J = Jack Pine	O = Oak	U = Upland Brush
B = Paper Birch	K = Rock	P = Lowland Poplar	UM = Upland Mix Forest
C = Cedar	L = Lowland Brush	Q = Mixed Swamp Conifer	V = Bog or Marsh
D = Treed Bog	LM = Lowland Mix Forest	R = Red Pine	W = White Pine
E = Swamp Hardwoods	M = Maple, Beech, Birch	S = Black Spruce	X = Non Stocked
F = Spruce/Fir	MC = Mixed Conifer	T = Tamarack	Y = Sand
G = Grass	MD = Mixed Deciduous	Z = Water	
H = Hemlock	N = Marsh		

Density

0 = Non Stocked	5 = Pole Timber Medium
1 = Seedling Sapling Poor	6 = Pole Timber Well
2 = Seedling Sapling Medium	7 = Saw Timber Poor
3 = Seedling Sapling Well	8 = Saw Timber Medium
4 = Pole Timber Poor	9 = Saw Timber Well

Locator Map 1:75,000

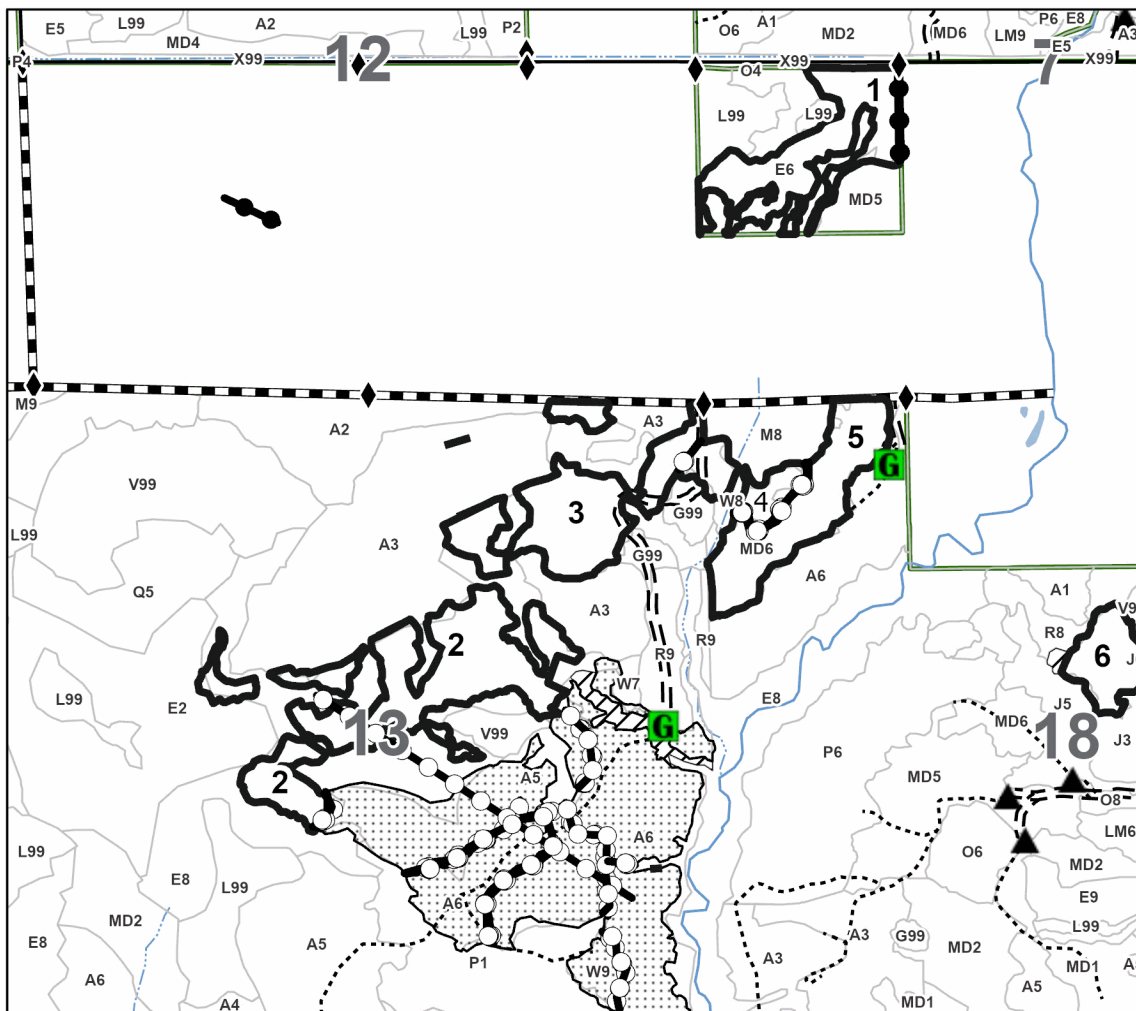


Heil Deer Select

150.8 Acres

Payment Unit Number	Acres	Payment Unit Number	Acres
1	19.6	5	18.6
2	38.3	6	17.6
3	23.7	7	26.2
4	6.8		

0 0.28 0.55 1.1 Miles



Legend

- Against State (Red)
- Private Line (Blue)
- Payment Unit (Yellow)
- Forest Access Route
- Administrative Access Only
- Paved Road
- Government Gravel/Dirt
- Recreational Trails
- ◆ Field Grade Corner
- ◆ Survey Grade Corner
- ▲ Berm
- Gate

Use QR Code to open Map in App



**TIMBER SALE MAP**

This information provided by authority of Part 525, 1994 PA 451, as amended.

Sale Number

73-002-24

Date

08/19/2024

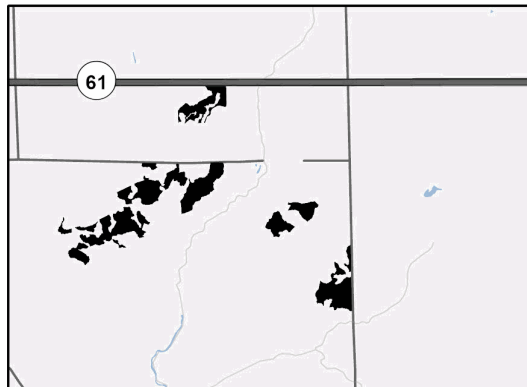
Forest Management Unit		County	Mapped By: Steven Nyhoff	Scale 1:18,000	Page 2	Of 2
Gladwin Management Unit		Gladwin	Cruised By: Steven Nyhoff			
Township 18N	Range 02E	Section(s) and Subdivision(s) S17 NWSW,; S13 S1/2NW, NE, NESW, NWSE; S18 NWNW, S1/2NW, S1/2NW, E1/2SE				

Cover Type

A = Aspen	J = Jack Pine	O = Oak	U = Upland Brush
B = Paper Birch	K = Rock	P = Lowland Poplar	UM = Upland Mix Forest
C = Cedar	L = Lowland Brush	Q = Mixed Swamp Conifer	V = Bog or Marsh
D = Treed Bog	LM = Lowland Mix Forest	R = Red Pine	W = White Pine
E = Swamp Hardwoods	M = Maple, Beech, Birch	S = Black Spruce	X = Non Stocked
F = Spruce/Fir	MC = Mixed Conifer	T = Tamarack	Y = Sand
G = Grass	MD = Mixed Deciduous	Z = Water	
H = Hemlock	N = Marsh		

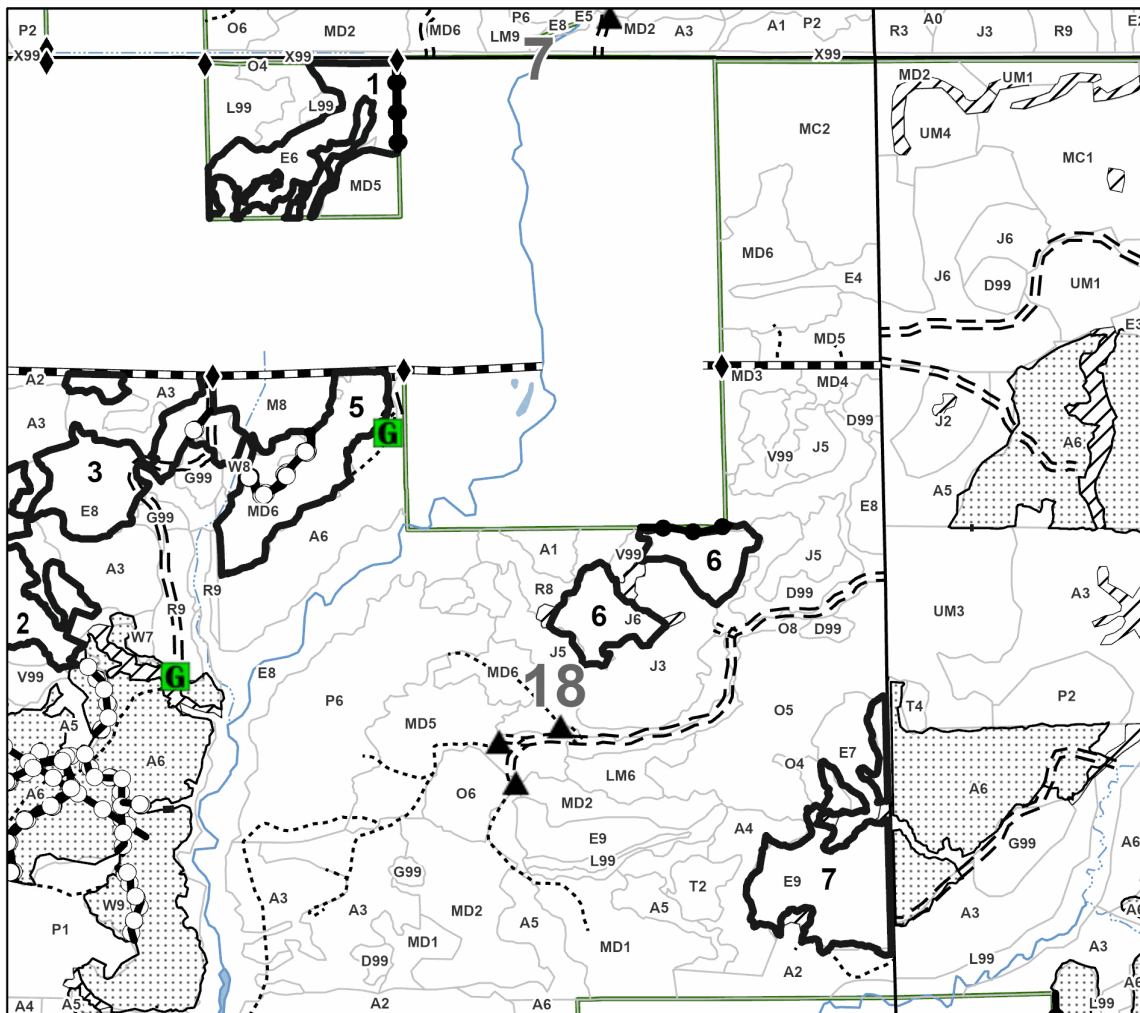
Density

0 = Non Stocked	5 = Pole Timber Medium
1 = Seedling Sapling Poor	6 = Pole Timber Well
2 = Seedling Sapling Medium	7 = Saw Timber Poor
3 = Seedling Sapling Well	8 = Saw Timber Medium
4 = Pole Timber Poor	9 = Saw Timber Well

Locator Map 1:70,588**Heil Deer Select****150.8 Acres**

Payment Unit Number	Acres	Payment Unit Number	Acres
1	19.6	5	18.6
2	38.3	6	17.6
3	23.7	7	26.2
4	6.8		

0 0.3 0.6 1.2 Miles

**Legend**

- Against State (Red)
- Private Line (Blue)
- Payment Unit (Yellow)
- Forest Access Route
- Administrative Access Only
- Paved Road
- Government Gravel/Dirt
- Recreational Trails
- Field Grade Corner
- Survey Grade Corner
- Berm
- Gate

Use QR Code to open Map in App



Heil Deer Select (73-002-24)

T18N, R01E, SEC. 13; T18N, R02E, SEC. 18; T18N, R02E, SEC. 7; Gladwin

In response to the notice of sale to be held 10:00 a.m. (local time) on July 29, 2025, I am hereby submitting my sealed bid (firm offer) for the following forest products to be cut. Bids for individual species must be at or above the advertised price. All non-responsive bid forms may be rejected.

<u>PRODUCTS & SPECIES</u>	<u>ESTIMATED VOLUME*</u>	<u>ADVERTISED PRICE</u>	<u>BID PRICE/UNIT</u>
Sawtimber			
Black/Red (Hybrid) Oak	43.3 MBF	\$ 89.00/MBF	\$ _____
Jack Pine	12.8 MBF	\$ 53.00/MBF	\$ _____
Mixed Aspen	51.2 MBF	\$ 61.00/MBF	\$ _____
Red Maple	180.4 MBF	\$ 52.00/MBF	\$ _____
Red Pine	24.0 MBF	\$ 110.00/MBF	\$ _____
White Pine	30.1 MBF	\$ 59.00/MBF	\$ _____
Pulpwood			
Jack Pine	112 Cords	\$ 18.70/Cord	\$ _____
Mixed Aspen	136 Cords	\$ 25.85/Cord	\$ _____
Mixed Oak	145 Cords	\$ 19.90/Cord	\$ _____
Paper Birch	50 Cords	\$ 25.10/Cord	\$ _____
Red Maple	669 Cords	\$ 19.50/Cord	\$ _____
Red Pine	36 Cords	\$ 43.50/Cord	\$ _____
White Pine	88 Cords	\$ 26.60/Cord	\$ _____

*The volumes are statistically estimated within plus (+) or minus (-) 13.06 percent at 95% confidence level. These estimated volumes are final and not subject to adjustment. Prospective bidders are urged to examine this timber and to make their own estimates of quantity and quality.

I understand that any or all bids may be rejected. All bids must be signed and all bid items must be bid or the bid form may be rejected. I also understand that consideration and awarding a contract will be based upon my past performance and ability to complete the contract based upon equipment and staffing subject to my control .

FEDERAL ID: ____ - ____ - ____ or SOCIAL SECURITY NUMBER: ____ - ____ - ____

Company or individual bidding: _____

Company representative's name: _____

Address: _____

City: _____ State: _____ Zip: _____

IF AVAILABLE, PLEASE PLACE THE PERSONALIZED LABEL FROM YOUR PROSPECTUS IN THE ABOVE BOX.

Individual or company representative's signature: _____ Date: _____

Phone number : _____ Email (optional): _____

**THE WINNING BIDDER MUST COMPLETE THE VERIFICATION OF WORKER'S DISABILITY COMPENSATION ACT
COMPLIANCE (ON REVERSE SIDE IF DOUBLE SIDED) WITHIN 21 DAYS OF SALE AWARD DATE**



TIMBER SALE VERIFICATION OF WORKER'S DISABILITY COMPENSATION ACT COMPLIANCE

As required by Act 317, P.A. 1969 (Worker's Compensation) and
Part 5 of Act 451 of 1994, as amended.

FOR DEPARTMENT USE ONLY

Sale Number (XX - XXX - XX - XX)

Forest Management Unit:

VERIFICATION OF WORKER'S DISABILITY COMPENSATION ACT COMPLIANCE

- This verification must be completed and submitted within 21 days of contract award and prior to the issuance of the timber sale contract.
- In addition, if boxes 2B or 2C are checked, then Notice of Exclusion or Certificate of Insurance must be submitted within twenty-one (21) days of the contract award and prior to the issuance of the timber sale contract.
- All Information must be typed or printed except for written signatures.

Please Check Appropriate Categories:

1. My business is organized as (you **must** check one of the boxes below):
 - A. ☐ Sole Proprietorship (individual)
 - B. ☐ Partnership
 - C. ☐ Corporation
2. You **must** check one of the boxes below:
 - A. ☐ I certify my business is a sole proprietorship and it has no employees but the sole proprietor. I am not subject to the Worker's Compensation Laws.
 - B. ☐ I certify my business has satisfied its obligation to the Worker's Compensation Act through the use of an approved Notice of Exclusion (BWC-337, Rev. 5/96). I will provide a copy of the Notice of Exclusion within 21 days of the contract award. (For questions or a copy of the BWC-337, please call the Worker's Compensation Bureau at 517-322-1195).
 - C. ☐ I certify my business has a Worker's Compensation Policy. I will provide an original Certificate of Insurance within twenty-one (21) days of the contract award.
3. If you have checked item 2(A) or 2(B), you **must** indicate the number of **both** full-time and part-time employees, other than yourself, including family members and active partners (if none, you must enter "0").

_____ Full-time Employees

_____ Part-time Employees

Name of Business		Federal ID (or) Social Security No.
Address		Telephone ()
City	State	ZIP

I hereby certify that the above information is true and correct. I agree to notify the Michigan DNR of any changes that occur in factors affecting my coverage during any of my present and future operations.

Signature of Owner or Authorized Representative

Title

Date

Please complete the "SEALED BID" information on the next page

Thru the Pine Aspen (73-001-24)
T18N, R01E, SEC. 13; T18N, R01E, SEC. 24; Gladwin COUNTY

In response to the notice of sale to be held 10:00 a.m. (local time) on July 29, 2025, I am hereby submitting my sealed bid (firm offer) for the following forest products to be cut. Bids for individual species must be at or above the advertised price. All non-responsive bid forms may be rejected.

<u>PRODUCTS & SPECIES</u>	<u>ESTIMATED VOLUME*</u>	<u>ADVERTISED PRICE</u>	<u>BID PRICE/UNIT</u>
Sawtimber			
Black/Red (Hybrid) Oak	13.7 MBF	\$ 89.00/MBF	\$ _____
Mixed Aspen	102.8 MBF	\$ 61.00/MBF	\$ _____
Red Maple	35.2 MBF	\$ 52.00/MBF	\$ _____
Red Pine	12.6 MBF	\$ 110.00/MBF	\$ _____
White Pine	68.2 MBF	\$ 59.00/MBF	\$ _____
Pulpwood			
Black/Red (Hybrid) Oak	105 Cords	\$ 19.90/Cord	\$ _____
Mixed Aspen	1,427 Cords	\$ 25.85/Cord	\$ _____
Mixed Hardwood	438 Cords	\$ 19.50/Cord	\$ _____
Red Pine	26 Cords	\$ 43.50/Cord	\$ _____
White Pine	98 Cords	\$ 26.60/Cord	\$ _____

*The volumes are statistically estimated within plus (+) or minus (-) 18.35 percent at 95% confidence level. These estimated volumes are final and not subject to adjustment. Prospective bidders are urged to examine this timber and to make their own estimates of quantity and quality.

I understand that any or all bids may be rejected. All bids must be signed and all bid items must be bid or the bid form may be rejected. I also understand that consideration and awarding a contract will be based upon my past performance and ability to complete the contract based upon equipment and staffing subject to my control .

FEDERAL ID: ____ - ____ - ____ or SOCIAL SECURITY NUMBER: ____ - ____ - ____

Company or individual bidding: _____

Company representative's name: _____

Address: _____

City: _____ State: _____ Zip: _____

IF AVAILABLE, PLEASE PLACE THE PERSONALIZED LABEL FROM YOUR PROSPECTUS IN THE ABOVE BOX.

Individual or company representative's signature: _____ Date: _____

Phone number : _____ Email (optional): _____

**THE WINNING BIDDER MUST COMPLETE THE VERIFICATION OF WORKER'S DISABILITY COMPENSATION ACT
COMPLIANCE (ON REVERSE SIDE IF DOUBLE SIDED) WITHIN 21 DAYS OF SALE AWARD DATE**



TIMBER SALE VERIFICATION OF WORKER'S DISABILITY COMPENSATION ACT COMPLIANCE

As required by Act 317, P.A. 1969 (Worker's Compensation) and
Part 5 of Act 451 of 1994, as amended.

FOR DEPARTMENT USE ONLY

Sale Number (XX - XXX - XX - XX)

Forest Management Unit:

VERIFICATION OF WORKER'S DISABILITY COMPENSATION ACT COMPLIANCE

- This verification must be completed and submitted within 21 days of contract award and prior to the issuance of the timber sale contract.
- In addition, if boxes 2B or 2C are checked, then Notice of Exclusion or Certificate of Insurance must be submitted within twenty-one (21) days of the contract award and prior to the issuance of the timber sale contract.
- All information must be typed or printed except for written signatures.

Please Check Appropriate Categories:

1. My business is organized as (you **must** check one of the boxes below):
 - A. ☐ Sole Proprietorship (individual)
 - B. ☐ Partnership
 - C. ☐ Corporation
2. You **must** check one of the boxes below:
 - A. ☐ I certify my business is a sole proprietorship and it has no employees but the sole proprietor. I am not subject to the Worker's Compensation Laws.
 - B. ☐ I certify my business has satisfied its obligation to the Worker's Compensation Act through the use of an approved Notice of Exclusion (BWC-337, Rev. 5/96). I will provide a copy of the Notice of Exclusion within 21 days of the contract award. (For questions or a copy of the BWC-337, please call the Worker's Compensation Bureau at 517-322-1195).
 - C. ☐ I certify my business has a Worker's Compensation Policy. I will provide an original Certificate of Insurance within twenty-one (21) days of the contract award.
3. If you have checked item 2(A) or 2(B), you **must** indicate the number of **both** full-time and part-time employees, other than yourself, including family members and active partners (if none, you must enter "0").

_____ Full-time Employees

_____ Part-time Employees

Name of Business		Federal ID (or) Social Security No.
Address		Telephone ()
City	State	ZIP

I hereby certify that the above information is true and correct. I agree to notify the Michigan DNR of any changes that occur in factors affecting my coverage during any of my present and future operations.

Signature of Owner or Authorized Representative

Title

Date

Please complete the "SEALED BID" information on the next page