



**DEPARTMENT OF NATURAL RESOURCES
STATE OF MICHIGAN
TIMBER SALE PROSPECTUS #7613**

SCHEDULED SALE DATE AND TIME: 3:00 p.m. (local time) on May 15, 2025.

LOCATION: NEWBERRY MGMT UNIT, 5666 S STATE HWY M 123, NEWBERRY, MI 49868.

PROSPECTUS NOTE: The bidder is advised to inspect the sale area and review the location, estimated volumes, operating costs and contract terms of proposed sales. Please be aware that some landowners may request 60 days or more notice for access across their land.

Notice is hereby given that bids will be received by the Unit Manager, NEWBERRY MANAGEMENT UNIT, for certain timber on the following described lands:

T Lake Hardwoods (42-003-24) / T45N, R11W, SEC. 22, NENE,S1/2NE,NWSE,S1/2SE.
T45N, R11W, SEC. 27, NE.

Luce County, Advertised Price \$62,504.65, 186.2 Acres, Hardwood, Sugar Maple.

SALE NOTE: No new roads will be permitted in any Payment Unit. All operations are limited to existing road network. Skid trails and back in spurs will be allowed.

Permission for access across private land is the responsibility of the Purchaser.

Within Payment Units 1-7, harvesting is not permitted during the period of April 15 to July 15 because of bark slippage.

A snowmobile trail is shown on the Timber Sale Map. See Sale Spec 5.2.41 for restrictions.

A recreation site such as a trail, pathway, or campground is within the sale area or the vicinity. Certain restrictions/specifications may be applicable including time restrictions.

Porky Attack Lowlands (42-010-24) / T45N, R11W, SEC. 22, S1/2SW.

T45N, R11W, SEC. 27, N1/2NW,SENW,NWNE,S1/2NE,SESE.

Luce County, Advertised Price \$23,018.80, 80.1 Acres, N White Cedar, Spruce/Fir/Tamarack.

SALE NOTE: Within Payment Units 1-4, harvesting is limited to the period of December 31 to March 31 because of wet soils.

Some roads or skid trails may require extra protection such as that afforded by timber mats, interlocking composite mats, or another approved system. See Sale Spec 5.2.17 for specific information.

Trail 45 is a snowmobile trail and is shown on the Timber Sale Map. See Sale Spec 5.2.41 for restrictions.

If Payment Unit 1 cannot be harvested, the Purchaser can opt to drop the Payment Unit from the sale. This will be done with a Timber Sale Contract Amendment.

A recreation site such as a trail, pathway, or campground is within the sale area or the vicinity. Certain restrictions/specifications may be applicable including time restrictions.

BID INSTRUCTIONS (VER. 10/10/2022):

1. Scheduled Bid Location, Date, and Time (2/11)

Bids must be received by the Unit Manager, NEWBERRY OFFICE, 5666 S STATE HWY M 123, NEWBERRY, MI 49868, no later than 3:00 p.m. (local time) on May 15, 2025. For further information concerning this sale, contact Keith Magnusson at 906-291-0120 extension n/a.

2. Bidder's Qualifications (10/22)

If all or part of a timber sale was prepared by a private contractor, the contractor and that contractor's company are not permitted to bid on the timber sale. A person must be 18 years of age or older to purchase timber. Permanent employees of the Department of Natural Resources or members of their immediate household may not bid. Former employees, in the permanent or seasonal class, may not bid until 3 months after the last day of active duty. Bids will not be accepted from individuals or companies appearing on the DNR/FRD No-Bid List. This list contains the names of purchasers who previously failed to execute a contract within 21-days or who have a history of poor performance.

3. Preparation of Sealed Bids (5/16)

Bid Forms may be completed online thru Michigan DNR Timber Sale Online Bidding (OLB) at www.michigan.gov/timberbidding or by completing the hardcopy Bid Form found in the Timber Sale Prospectus. Hardcopy Bid Forms shall be manually signed in ink. Registration in OLB is considered your 'signature' for all bids submitted thru that system. Bid prices must be entered for each species and product in the Bid Price column for all material subject to bidding and all fill-in blanks must be completed. If erasures or other changes appear on the hardcopy Bid Form, each erasure or change must be initialed by the person signing the bid.

4. Submission of Sealed Bids (5/16)

Bid forms may be obtained from the Unit Manager or thru OLB. Bids may be submitted hardcopy or thru OLB. All hardcopy bids must be submitted on the bid form and in an envelope clearly identified as described in this section. NOTE: Only one bid form per bid envelope. Sealed bids must be submitted to the Unit office designated in the prospectus and must be submitted at or prior to the time established in the prospectus. The envelope should show on the outside (a) the sale name or number and (b) the date and time of bid opening, as shown in the prospectus. Bids received after the time specified in the sale prospectus are late bids and will be rejected.

It is possible for a bidder to submit multiple bids on a single sale. For example, a bid may be submitted hardcopy and a bid may be submitted thru OLB. Or, two bidders from the same company could both submit bids on the same sale. If this were to happen, the State would accept all bids received and award the contract accordingly. All bidding and contractual requirements would apply to all bids received.

5. Public Opening of Sealed Bids (7/16)

If conditions permit, the sealed bids will be publicly opened and posted at the time and place set in the prospectus.

If a bidder, present at a bid opening, has submitted bids on more than one sale, that bidder may withdraw their unopened bid envelopes or announce the withdrawal of their online bid after being declared the successful bidder on one sale.

6. Award of Contract (1/11)

Award of the contract will be made to the Bidder whose bid, conforming to the prospectus, is most advantageous to the State of Michigan on the basis of total value at rates bid for the estimated quantities. The State reserves the right to reject any bid or waive any minor irregularity in bids received. A written award mailed (or otherwise furnished) to the successful Bidder shall be deemed to result in a binding contract without further action by either party.

7. Down Payment (1/11)

The Bidder to whom award is made must make a down payment within 21 days of the sale award. The amount of the down payment will be calculated as shown in the Bond and Payment Schedule of this prospectus. Only cash may be used to meet this requirement.

8. Performance Security (1/11)

As guarantee of faithful performance, a cash bond, certificate of deposit, surety bond or irrevocable letter of credit (LOC) is required within 21 days of the sale award. The amount of the performance security is shown in the Bond and

Payment Schedule of this prospectus. If an LOC or surety is used, the coverage must extend for at least 6 months beyond the contract expiration.

9. Worker's Compensation (10/22)

Purchaser shall obtain worker's compensation insurance to cover claims under Michigan's Worker's Disability Compensation Act of 1969 or similar employee benefit act of any other state applicable to an employee. Verification of Worker's Disability Compensation Act Compliance must be completed and submitted within 21 days of contract award and prior to the issuance of the timber sale contract. In addition, if applicable, Notice of Exclusion or Certificate of Insurance must also be submitted.

10. Timber Sale Contract (10/22)

Additional conditions and requirements common to all timber sales are listed on the timber sale contract (R4031) and are available on line at www.michigan.gov/timber. Contact the Unit Manager for additional information or a sample contract. Within 21 days of the date of the award letter, the bidder must sign the contract and provide the required down payment, performance security, and verification of worker's disability compensation. The down payment and performance security shall be in accordance with the provisions of the timber sale contract, in the sums stated in this prospectus. If these actions are not taken, then the Bidder, the Bidder's corporation, and the corporation's principals may not be permitted to bid on State timber sales for a period of 3 months after the first offense, 6 months after the second offense, and 1 year after the third offense. An offense will only be counted against the Bidder for 5 years. In addition, the Bidder certifies that if awarded this contract, the Bidder will complete the timber sale contract in accordance with its terms and any modifications thereof including requirements to purchase, cut, and remove the included timber by the expiration date.

Payment Unit values in the State Forest Timber Sale Contract are calculated based on the advertised value of the Payment Unit as a percentage of the total advertised value of the contract. The advertised value of each Payment Unit is given in the Description of Timber by Payment Unit table on the Timber Sale Information page. For example, if the value of Payment Unit 1 is advertised as \$1,500 and the total Timber Sale value is advertised as \$10,000, the contract price for Payment Unit 1 will be 15% of the total bid price ($\$1,500/\$10,000 * 100$).

11. Disclaimer of Estimates and Bidder's Warranty of Inspection (10/22)

Before submitting this bid, the Bidder is advised and cautioned to inspect the sale area, review the requirements of the sale contract, and take other steps as may be reasonably necessary to ascertain the location, estimated volumes, construction estimates, and operating costs of the proposed sale. Failure to do so will not relieve the Bidder from responsibility for completing the contract.

The Bidder warrants that this bid is submitted solely on the basis of the Bidder's examination and inspection of the quality and quantity of the timber offered for sale and the Bidder's opinion of the value thereof and the costs of recovery. No reliance should be placed on the State of Michigan's estimates of timber quality, quantity or costs of recovery. Bidder further acknowledges that the State of Michigan: (i) expressly disclaims any warranty of fitness of timber for any purpose; (ii) offers this timber as is without any warranty of quality (merchantability) or quantity and (iii) expressly disclaims any warranty as to the quantity or quality of timber sold.

12. Certification and Chain-of-Custody (10/22)

Unless otherwise indicated in the contract under section 7 – Other Conditions of the Sale Specific Conditions & Requirements, the area encompassed by this timber sale is certified to the standards of the Forest Stewardship Council (FSC) - Certificate #SCS-FM/COC-00090N and the Sustainable Forestry Initiative (SFI) - Certificate #NSF-SFIS-5Y031-SF5. Forest products from this sale may be delivered to the mill as "FSC 100% and / or SFI certified" as long as the contractor hauling the forest products is chain-of-custody (COC) certified or covered under a COC certificate from the destination mill. The purchaser is responsible for maintaining COC after leaving the sale area.

13. Good Neighbor Authority (GNA) Requirements (10/22)

If the name of this timber sales contains the acronym GNA, it is authorized by the Good Neighbor Authority (GNA) and covered by various agreements between the U.S. Forest Service and the State. The timber sale occurs on federal land and the following conditions apply:

GNA contracts on US Forest Service land will not be awarded to purchasers on the Federal list of excluded parties. The System for Award Management (SAM) will be checked for active excluded parties prior to award of contract. In

addition, the Bidder to whom award is made must complete an Assurance Regarding Felony Conviction or Tax Delinquent Status for Corporate Applicants (AD-3031).

14. Good Neighbor Authority (GNA) Requirements, con't (10/22)

Bidder certifies, by signing this bid form, that to the best of Bidder's knowledge that the following representations are accurate and complete.

- a. That the Bidder and its principals are not presently debarred, suspended, proposed for debarment, declared ineligible, or voluntary excluded from timber sales (covered transactions) by any Federal department or agency.
- b. That the Bidder and its principals have not within a 3-year period preceding this bid been convicted of or had a civil judgment rendered against them for commission of fraud or a criminal offense in connection with obtaining , attempting to obtain, or performing a public (Federal, State, or local) transaction or contract under a public transaction; violation of Federal or State antitrust statutes or commission of embezzlement, theft, forgery, bribery, falsification or destruction of records, making false statements, or receiving stolen property.
- c. That the Bidder and its principals are not presently indicted for or otherwise criminally or civilly charged by a governmental entity (Federal, State, or local) with commission of any of the offenses enumerated in paragraph b of this certification.
- d. That the Bidder and its principals have not within a 3-year period preceding this bid had one or more public transactions (Federal, State, or local) terminated for breach or default of a timber or forest product contract.

Bidders that cannot certify this requirement, in whole or in part, shall submit an explanation with their bid.

Scott Bowen
Director

TIMBER SALE INFORMATION

T Lake Hardwoods (42-003-24)
T45N, R11W, SEC. 22; T45N, R11W, SEC. 27.
Luce County (Advertised Price \$62,504.65)

SALE NOTE: No new roads will be permitted in any Payment Unit. All operations are limited to existing road network. Skid trails and back in spurs will be allowed.

Permission for access across private land is the responsibility of the Purchaser.

Within Payment Units 1-7, harvesting is not permitted during the period of April 15 to July 15 because of bark slippage.

A snowmobile trail is shown on the Timber Sale Map. See Sale Spec 5.2.41 for restrictions.

A recreation site such as a trail, pathway, or campground is within the sale area or the vicinity. Certain restrictions/specifications may be applicable including time restrictions.

A timber sale contract for this lump sum, sealed bid timber sale will be awarded to the responsible bidder offering the highest sealed bid price. All units of volume listed below were estimated using the Inventory Manager computer program and the new Michigan taper model. Bids must be at or above the following advertised price for each product and species:

<u>PRODUCTS & SPECIES</u>	<u>ESTIMATED UNITS*</u>	<u>ADVERTISED PRICE</u>
Sawtimber		
Black Cherry	22.2 MBF	\$ 98.00 / MBF
Red Maple	52.5 MBF	\$ 32.00 / MBF
Sugar Maple	139.5 MBF	\$ 291.00 / MBF
Pulpwood		
Balsam Fir	92 Cords	\$ 7.55 / Cord
Mixed Hardwood	1,319 Cords	\$ 9.40 / Cord
Quaking Aspen	209 Cords	\$ 22.65 / Cord
Tamarack	50 Cords	\$ 4.55 / Cord

* The total volume is statistically estimated within plus (+) or minus (-) 15.63 percent. There are an estimated 2,208 cords on this timber sale, plus or minus 345 cords at the 95% confidence level. The estimated units are final and not subject to adjustment. Prospective bidders are urged to examine this timber and to make their own estimates of quantity and quality.

BOND AND PAYMENT SCHEDULE:

1. A bond in the amount of \$3,125.00 to insure faithful performance of the conditions of the contract will be deposited by the successful bidder within 21 days of the sale award.
2. Cutting in any sale or unit without the required advance payment would be considered a trespass.
3. Total payment must be paid in advance or according to the following schedule:
 - (a) Ten percent (10%) of the sale value must be paid within 21 days of the sale award.
 - (b) The 10% down payment will be credited towards the first unit cut.

(c) Payment for each of the following units must be made before cutting begins in that unit:

<u>PAYMENT UNIT NUMBER</u>	<u>PERCENT OF TOTAL SALE VALUE</u>
01	10.9%
02	2.5%
03	18.9%
04	21.5%
05	21.1%
06	23.5%
07	1.6%

4. If no cutting takes place, the 10% down payment will not be refunded.
5. Operations on the contract issued will terminate on 12/31/2028.

SALE STATISTICS

Volumes were calculated in cubic feet using the Michigan taper model. Cubic foot volume includes all wood inside bark for the product indicated. For display purposes, cubic feet were converted to cords and MBF using a simple conversion factor, e.g. 79 cubic feet per cord and 185 cubic feet per MBF. The cubic foot volumes are precise; the cords and MBF volumes are not. Cubic foot volume cannot be directly converted to cords or boards with precision.

SALE VOLUMES

The total estimated sale volume may not equal the sum of the species/products due to the nature of statistical calculations associated with double sampling methodology.

VOLUME			STATISTICAL RANGE IN CORDS	
TOTAL CUBIC FEET	TOTAL CORDS	PERCENT ERROR	MINIMUM	MAXIMUM
174,452	2,208	15.63%	1,863	2,554

VDU VOLUMES

A VDU is a Volume Determination Unit. Volumes and their associated statistics are calculated at the VDU level and summarized to the sale level. There is often a one to one relationship between a VDU and a Payment Unit, but not always, depending on the cruise design. Refer to the VDU TO PAYMENT UNIT table.

	VOLUME			RANGE IN CORDS	
VDU	TOTAL CUBIC FEET	TOTAL CORDS	PERCENT ERROR	MINIMUM	MAXIMUM
27	18,510	234	61.37%	91	378
28	135,400	1,714	18.03%	1,405	2,023
29	16,281	206	37.80%	128	284
33	4,261	54	62.30%	20	88
TOTAL:	174,452	2,208		1,644	2,773

VDU TO PAYMENT UNIT

When a VDU is associated with more than one Payment Unit (PU), the VDU volumes are assigned to the PU based on acres of the VDU within the PU.

VDU	VDU ACRES	PU	PU ACRES
27	5.4	2	5.4
28	163.2	3	36.3
28	163.2	4	41.2
28	163.2	5	40.6
28	163.2	6	45.1
29	9.3	1	9.3
33	8.3	7	8.3
TOTAL:	675.8		186.2

DESCRIPTION OF TIMBER BY PAYMENT UNIT (PU)

PU	MARKET GROUP	PRODUCT	QUANTITY	UNIT	ACRES	ADVERTISE PRICE
1	Black Cherry	Sawtimber	7.8	MBF	9.3	\$6,788.00
	Red Maple		9.0	MBF		
	Sugar Maple		15.3	MBF		
	Balsam Fir	Pulpwood	17	Cords		
	Mixed Hardwood		106	Cords		
	<i>Black Cherry</i>		7	<i>Cords</i>		
	<i>Red Maple</i>		64	<i>Cords</i>		
	<i>Sugar Maple</i>		35	<i>Cords</i>		
	Quaking Aspen		7	Cords		
2	Red Maple	Sawtimber	2.1	MBF	5.4	\$1,576.15
	Balsam Fir	Pulpwood	39	Cords		
	Mixed Hardwood		105	Cords		
	<i>Black Cherry</i>		11	<i>Cords</i>		
	<i>Red Maple</i>		94	<i>Cords</i>		
	Tamarack		50	Cords		
3	Black Cherry	Sawtimber	3.2	MBF	36.3	\$11,827.50
	Red Maple		8.9	MBF		
	Sugar Maple		27.3	MBF		
	Balsam Fir	Pulpwood	8	Cords		
	Mixed Hardwood		237	Cords		
	<i>Beech</i>		20	<i>Cords</i>		
	<i>Black Cherry</i>		20	<i>Cords</i>		
	<i>Ironwood</i>		2	<i>Cords</i>		
	<i>Red Maple</i>		80	<i>Cords</i>		
	<i>Sugar Maple</i>		115	<i>Cords</i>		
	Quaking Aspen		44	Cords		
4	Black Cherry	Sawtimber	3.6	MBF	41.2	\$13,422.85
	Red Maple		10.0	MBF		
	Sugar Maple		31.0	MBF		
	Balsam Fir	Pulpwood	9	Cords		
	Mixed Hardwood		269	Cords		
	<i>Beech</i>		23	<i>Cords</i>		
	<i>Black Cherry</i>		23	<i>Cords</i>		
	<i>Ironwood</i>		2	<i>Cords</i>		
	<i>Red Maple</i>		91	<i>Cords</i>		
	<i>Sugar Maple</i>		130	<i>Cords</i>		
	Quaking Aspen		50	Cords		
5	Black Cherry	Sawtimber	3.6	MBF	40.6	\$13,204.50
	Red Maple		9.9	MBF		
	Sugar Maple		30.5	MBF		
	Balsam Fir	Pulpwood	9	Cords		
	Mixed Hardwood		264	Cords		
	<i>Beech</i>		22	<i>Cords</i>		
	<i>Black Cherry</i>		23	<i>Cords</i>		
	<i>Ironwood</i>		2	<i>Cords</i>		
	<i>Red Maple</i>		89	<i>Cords</i>		
	<i>Sugar Maple</i>		128	<i>Cords</i>		
	Quaking Aspen		49	Cords		
6	Black Cherry	Sawtimber	4.0	MBF	45.1	\$14,712.55
	Red Maple		11.0	MBF		
	Sugar Maple		33.9	MBF		
	Balsam Fir	Pulpwood	10	Cords		
	Mixed Hardwood		296	Cords		
	<i>Beech</i>		25	<i>Cords</i>		
	<i>Black Cherry</i>		26	<i>Cords</i>		
	<i>Ironwood</i>		3	<i>Cords</i>		

DESCRIPTION OF TIMBER BY PAYMENT UNIT (PU), CON'T

PU	MARKET GROUP	PRODUCT	QUANTITY	UNIT	ACRES	ADVERTISE PRICE
6 con't	<i>Red Maple</i>	<i>Pulpwood</i>	99	<i>Cords</i>		
	<i>Sugar Maple</i>		143	<i>Cords</i>		
	Quaking Aspen		55	Cords		
7	Red Maple	Sawtimber	1.6	MBF	8.3	\$973.10
	Sugar Maple	Pulpwood	1.5	MBF		
	Mixed Hardwood		42	Cords		
	<i>Black Cherry</i>		18	<i>Cords</i>		
	<i>Red Maple</i>		5	<i>Cords</i>		
	<i>Sugar Maple</i>		19	<i>Cords</i>		
	Quaking Aspen		4	Cords		
	TOTAL:			214.2		
TOTAL:			1,670	Cords		

Sale Specific Conditions & Requirements

Sale Name: T Lake Hardwoods

Sale Number: 42-003-24 Seq#: 1

1 - Sale Area

1.2 - Boundaries

1.2.1 - Painted Boundaries (9/19)

The sale boundary and Payment Unit boundaries are marked and identified by blue, red and yellow paint. Exterior sale boundary lines against private property are marked with blue paint. Exterior sale boundary lines against state are marked with red paint. Interior Payment Unit boundaries are marked with yellow paint. The painted boundary line trees are not Included Timber and are to be protected unless marked with orange paint. Yellow painted trees designating an interior Payment Unit boundary are only to be cut when all surrounding Payment Units have been paid.

2 - Timber Specifications

2.1 - Included Timber

2.1.2 - Clearcut Unit(s) w/o Unmerchantable Trees (8/11)

Within Payment Unit(s) 2, cut all trees which meet minimum piece specifications in 2.2 Utilization, except do not cut hemlock, or white pine within hemlock inclusions.

2.1.3 - Cut Tree Marked Unit(s) (12/08)

Within Payment Unit(s) 1 and 3-7, all trees are designated for cutting when marked with orange paint above and below stump height, regardless of merchantability. Except, do not cut hemlock, spruce, or white pine. In addition, the following specifications apply:

- Within Payment Unit(s) 1, 3-5, and 7, cut all beech, aspen, and balsam fir.

- Within Payment Unit(s) 6, do not cut beech.

3 - Payments

3.3 - Pre-measured Sales

3.3.4 - Dividing Payment Units (7/14)

Payment Unit(s) 3-6, may be divided at the request of the Purchaser and upon approval of the Unit Manager. Dividing Payment Units is a contract modification which requires a Timber Sale Contract Amendment.

4 - Transportation

4.1 - Construction

4.1.12 - No New Roads (1/12)

No new roads will be permitted in any Payment Unit. All operations are limited to existing road network. Skid trails and back in spurs will be allowed.

4.2 - Maintenance

4.2.5 - Two Wheel Drive Condition (2/04)

All existing trail roads on and adjacent to the Sale Area must be passable by two-wheel drive traffic for the duration of the sale.

4.4 - Access

4.4.1 - Private property access (3/11)

Permission for access across private land is the responsibility of the Purchaser.

4.4.2 - Alternate route on private property (2/04)

It is the Purchaser's responsibility to obtain access across private land for any routes other than the route shown on the Timber Sale Map.

5 - Operations

5.2 - Conduct of Operations

5.2.2 - Hazard Trees/Snags

5.2.2.1 - Den Trees (10/16)

Obvious hollow and/or den trees shall be protected and left standing unless they are a safety hazard.

5.2.3 - Operating Restrictions

5.2.3.3 - Bark Slippage Restriction (3/09)

Within Payment Unit(s) 1-7, unless changed by written agreement, cutting and skidding are not permitted during the period of April 15 to July 15. This restriction is because of bark slippage.

5.2.32 - Decking/Landing Restoration (9/13)

All decking and landing areas must have the surface area restored to a condition equal to or better than before. This is to ensure the proper regeneration of the stand.

5.2.38 - No Decking Against Live Trees (2/04)

Cut products may not be decked against unmarked or designated leave trees.

5.2.41 - Snowmobile Trail Protection (9/11)

The snowmobile trail is shown on the Timber Sale Map. Do not cut or damage posts with orange trail markers or traffic control signs. If the trail road is to be used for hauling during the snowmobile season, then a snow-covered base must be left on the trail. No decking of forest products will be permitted along the snowmobile trail.

5.3 - Stream Protection

5.3.2 - Parking Equipment Near Water (10/23)

Within Payment Unit(s) 5, 6, & 7, the parking of or storage of equipment is prohibited within 100 feet of water bodies or ground water supplies. All equipment, when not in use for harvest operations, must be parked a minimum of 100 feet away from water sources (streams, rivers, lakes, ponds, vernal pools, ground water sources) and 50 feet away from slopes leading to water sources and/or riparian areas. This restriction is for preventing unforeseen oil and/or fluid leaks from contaminating water bodies and/or ground water supplies.

5.4 - Soil Protection

5.4.1 - Rutting Restriction, General (7/16)

Operations are to cease immediately if equipment and weather conditions result in rutting of roads and/or skid trails which is 12 inches or greater in depth and 50 feet in length. The Unit Manager or his/her representative may restrict hauling and/or skidding if ruts exceed the specified depth. With the Unit Manager or his/her representative's approval, the Purchaser may return to the area when the risk of rutting has decreased.

5.8 - Protection of Endangered Species

5.8.5 - Protection of Raptor Nests (3/13)

All trees with raptor nests will be protected if found during harvesting operations. Notification will be made to the Unit Manager or his/her representative who will notify the Wildlife Biologist so an onsite evaluation and recommendation can be made, if necessary.

6 - Safety and Fire Prevention

6.2 - Signing

6.2.1 - Road Posting (10/20)

The Purchaser is responsible for posting and maintaining caution signs on County Road 431 prior to beginning operations. The road must be posted at appropriate distances from the Sale Area to warn of logging activity and truck traffic. Signs must be removed when harvest operations are suspended or completed. The DNR will provide these signs.

6.2.2 - Snowmobile Trail Posting (10/20)

The Purchaser is responsible for posting and maintaining caution signs on snowmobile trail prior to beginning operations during

the snowmobile season (approximately December 1 to March 31). The trail must be posted at appropriate distances from the Sale Area to warn of logging activity and truck traffic. Signs must be removed when harvest operations are suspended or completed. The DNR will provide these signs.



TIMBER SALE MAP

This information provided by authority of Part 525, 1994 PA 451, as amended.

Sale Number

42-003-24

Date

08/23/2024

Forest Management Unit

Newberry Mgt Unit

County

Luce

Mapped By: Payment

Cruised By: Grossman Forestry

Scale

1:20,000

Page

1

Of

1

Township
45N

Range
11W

Section(s) and
Subdivision(s) Sec. 22 NENE,S1/2NE,NWSE,S1/2SE; Sec. 27 NE;

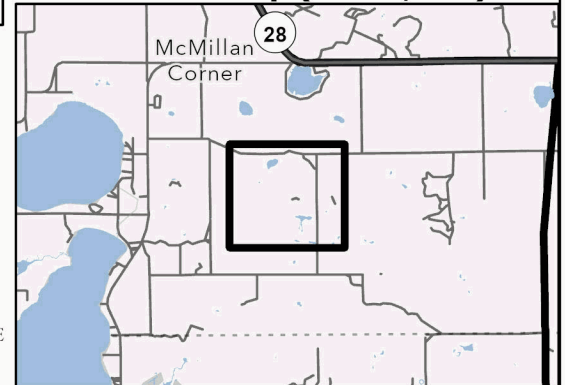
Cover Type

A = Aspen	J = Jack Pine	O = Oak	U = Upland Brush
B = Paper Birch	K = Rock	P = Lowland Poplar	UM = Upland Mix Forest
C = Cedar	L = Lowland Brush	Q = Mixed Swamp Conifer	V = Bog or Marsh
D = Treed Bog	LM = Lowland Mix Forest	R = Red Pine	W = White Pine
E = Swamp Hardwoods	M = Maple, Beech, Birch	S = Black Spruce	X = Non Stocked
F = Spruce/Fir	MC = Mixed Conifer	T = Tamarack	Y = Sand
G = Grass	MD = Mixed Deciduous	Z = Water	
H = Hemlock	N = Marsh		

Density

0 = Non Stocked	5 = Pole Timber Medium
1 = Seedling Sapling Poor	6 = Pole Timber Well
2 = Seedling Sapling Medium	7 = Saw Timber Poor
3 = Seedling Sapling Well	8 = Saw Timber Medium
4 = Pole Timber Poor	9 = Saw Timber Well

Locator Map (1:200,000)

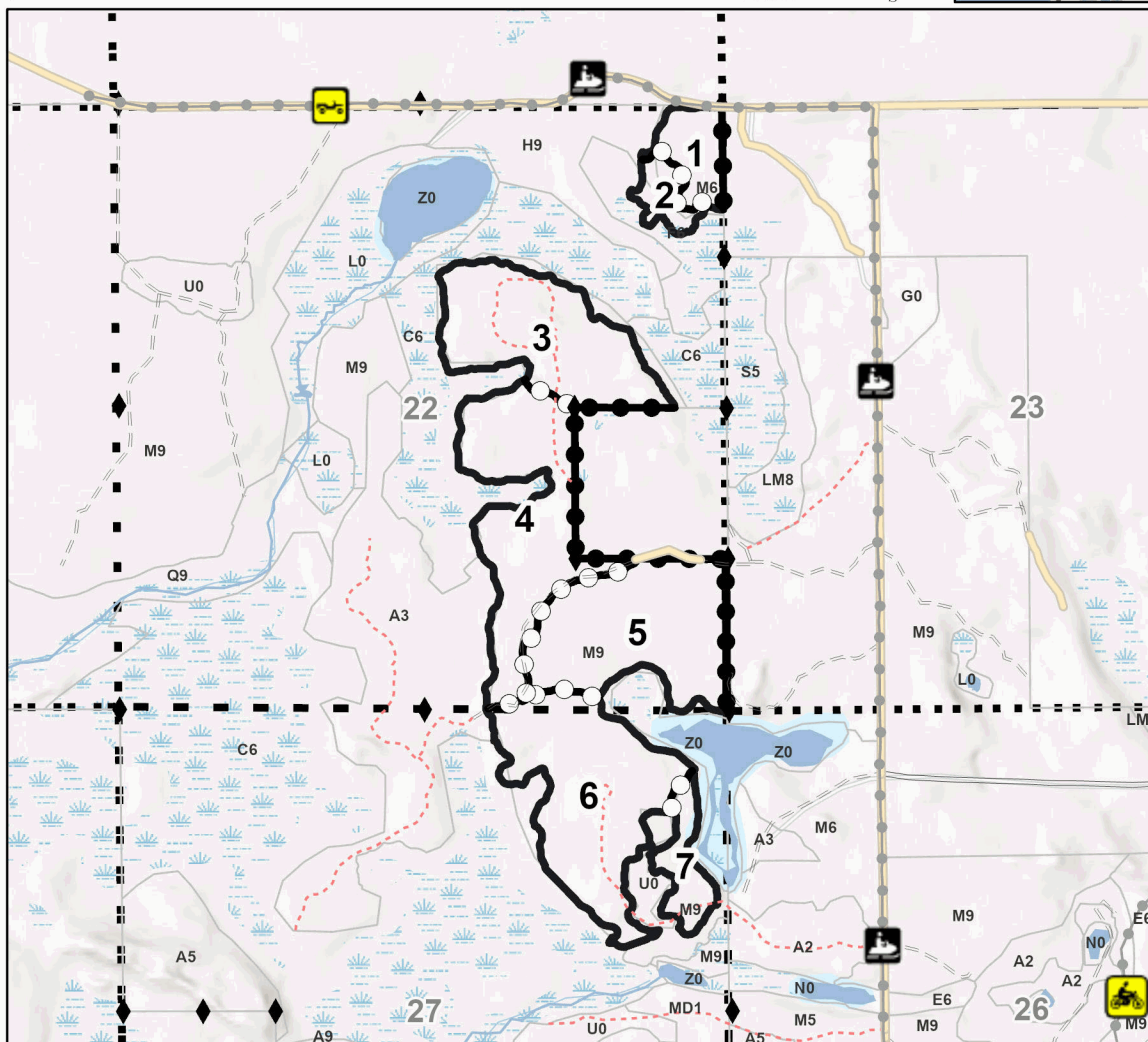


PU #	Acres	PU #	Acres
1	9.3	5	40.6
2	5.4	6	45.1
3	36.3	7	8.3
4	41.2		

**T Lake
Hardwoods**

186.2 Acres

0 0.3 0.6 1.2 Miles



Legend

- Against State (Red)
- Payment Unit (Yellow)
- Private Line (Blue)
- Recreational Trail
- Secondary Forest Road
- Forest Access Route
- Administrative Access Only
- Non-DNR Road
- ◆ Survey Grade Corner
- Stand
- Sections

Use QR Code to open Map in App



TIMBER SALE INFORMATION

Porky Attack Lowlands (42-010-24)
T45N, R11W, SEC. 22; T45N, R11W, SEC. 27.
Luce County (Advertised Price \$23,018.80)

SALE NOTE: Within Payment Units 1-4, harvesting is limited to the period of December 31 to March 31 because of wet soils.

Some roads or skid trails may require extra protection such as that afforded by timber mats, interlocking composite mats, or another approved system. See Sale Spec 5.2.17 for specific information.

Trail 45 is a snowmobile trail and is shown on the Timber Sale Map. See Sale Spec 5.2.41 for restrictions.

If Payment Unit 1 cannot be harvested, the Purchaser can opt to drop the Payment Unit from the sale. This will be done with a Timber Sale Contract Amendment.

A recreation site such as a trail, pathway, or campground is within the sale area or the vicinity. Certain restrictions/specifications may be applicable including time restrictions.

A timber sale contract for this lump sum, sealed bid timber sale will be awarded to the responsible bidder offering the highest sealed bid price. All units of volume listed below were estimated using the Inventory Manager computer program and the new Michigan taper model. Bids must be at or above the following advertised price for each product and species:

<u>PRODUCTS & SPECIES</u>	<u>ESTIMATED UNITS*</u>	<u>ADVERTISED PRICE</u>
Sawtimber		
Paper Birch	5.7 MBF	\$ 35.00 / MBF
Pulpwood		
Balsam Fir	526 Cords	\$ 7.55 / Cord
Black Spruce	341 Cords	\$ 4.70 / Cord
Mixed Aspen	335 Cords	\$ 22.65 / Cord
Mixed Hardwood	539 Cords	\$ 9.40 / Cord
N. White Cedar	1,005 Cords	\$ 4.55 / Cord
Tamarack	4 Cords	\$ 4.55 / Cord

* The total volume is statistically estimated within plus (+) or minus (-) 14.60 percent. There are an estimated 2,770 cords on this timber sale, plus or minus 405 cords at the 95% confidence level. The estimated units are final and not subject to adjustment. Prospective bidders are urged to examine this timber and to make their own estimates of quantity and quality.

BOND AND PAYMENT SCHEDULE:

1. A bond in the amount of \$1,151.00 to insure faithful performance of the conditions of the contract will be deposited by the successful bidder within 21 days of the sale award.
2. Cutting in any sale or unit without the required advance payment would be considered a trespass.
3. Total payment must be paid in advance or according to the following schedule:
 - (a) Ten percent (10%) of the sale value must be paid within 21 days of the sale award.
 - (b) The 10% down payment will be credited towards the first unit cut.
 - (c) Payment for each of the following units must be made before cutting begins in that unit:

<u>PAYMENT UNIT NUMBER</u>	<u>PERCENT OF TOTAL SALE VALUE</u>
01	9.0%
02	29.4%
03	44.1%
04	17.5%

4. If no cutting takes place, the 10% down payment will not be refunded.
5. Operations on the contract issued will terminate on 06/30/2029.

SALE STATISTICS

Volumes were calculated in cubic feet using the Michigan taper model. Cubic foot volume includes all wood inside bark for the product indicated. For display purposes, cubic feet were converted to cords and MBF using a simple conversion factor, e.g. 79 cubic feet per cord and 185 cubic feet per MBF. The cubic foot volumes are precise; the cords and MBF volumes are not. Cubic foot volume cannot be directly converted to cords or boards with precision.

SALE VOLUMES

The total estimated sale volume may not equal the sum of the species/products due to the nature of statistical calculations associated with double sampling methodology.

VOLUME			STATISTICAL RANGE IN CORDS	
TOTAL CUBIC FEET	TOTAL CORDS	PERCENT ERROR	MINIMUM	MAXIMUM
218,859	2,770	14.60%	2,366	3,175

VDU VOLUMES

A VDU is a Volume Determination Unit. Volumes and their associated statistics are calculated at the VDU level and summarized to the sale level. There is often a one to one relationship between a VDU and a Payment Unit, but not always, depending on the cruise design. Refer to the VDU TO PAYMENT UNIT table.

	VOLUME			RANGE IN CORDS	
VDU	TOTAL CUBIC FEET	TOTAL CORDS	PERCENT ERROR	MINIMUM	MAXIMUM
26	170,470	2,158	17.33%	1,784	2,532
28	22,522	285	46.98%	151	419
45	25,868	327	28.47%	234	421
TOTAL:	218,859	2,770		2,169	3,371

VDU TO PAYMENT UNIT

When a VDU is associated with more than one Payment Unit (PU), the VDU volumes are assigned to the PU based on acres of the VDU within the PU.

VDU	VDU ACRES	PU	PU ACRES
26	49.9	2	20.0
26	49.9	3	29.9
28	20.8	1	20.8
45	9.4	4	9.4
TOTAL:	130.0		80.1

DESCRIPTION OF TIMBER BY PAYMENT UNIT (PU)

PU	MARKET GROUP	PRODUCT	QUANTITY	UNIT	ACRES	ADVERTISE PRICE
1	Balsam Fir Black Spruce Mixed Aspen <i>Quaking Aspen</i> Mixed Hardwood <i>Black Cherry</i> <i>Paper Birch</i> <i>Red Maple</i> <i>White Ash</i>	Pulpwood	8 182 20 20 75 3 15 45 12	Cords Cords Cords Cords Cords Cords Cords Cords Cords	20.8	\$2,073.80
2	Paper Birch Balsam Fir Black Spruce Mixed Aspen <i>Quaking Aspen</i> Mixed Hardwood <i>Black Cherry</i> <i>Black Cherry</i> <i>Paper Birch</i> <i>Red Maple</i> <i>White Ash</i> <i>Yellow Birch</i> N. White Cedar <i>N. White Cedar</i>	Sawtimber Pulpwood <i>Sawtimber</i> <i>Pulpwood</i>	0.4 164 55 87 87 157 0.3 14 74 59 2 7 400 400	MBF Cords Cords Cords Cords Cords MBF Cords Cords Cords Cords Cords Cords Cords	20.0	\$6,777.05
3	Paper Birch Balsam Fir Black Spruce Mixed Aspen <i>Quaking Aspen</i> Mixed Hardwood <i>Black Cherry</i> <i>Black Cherry</i> <i>Paper Birch</i> <i>Red Maple</i> <i>White Ash</i> <i>Yellow Birch</i> N. White Cedar <i>N. White Cedar</i>	Sawtimber Pulpwood <i>Sawtimber</i> <i>Pulpwood</i>	0.7 245 83 130 130 236 0.5 22 111 89 2 11 598 598	MBF Cords Cords Cords Cords Cords MBF Cords Cords Cords Cords Cords Cords Cords	29.9	\$10,148.15
4	Paper Birch Balsam Fir Black Spruce Mixed Aspen <i>B. T. Aspen</i> Mixed Hardwood <i>Red Maple</i> <i>Paper Birch</i> <i>Red Maple</i> N. White Cedar <i>N. White Cedar</i> <i>N. White Cedar</i> Tamarack	Sawtimber Pulpwood <i>Sawtimber</i> <i>Pulpwood</i> <i>Sawtimber</i> <i>Pulpwood</i>	4.6 109 21 98 98 71 2.7 22 44 7 0.5 6 4	MBF Cords Cords Cords Cords Cords MBF Cords Cords Cords Cords MBF Cords Cords	9.4	\$4,019.80
TOTAL:			5.7	MBF		
TOTAL:			2,750	Cords		

Sale Specific Conditions & Requirements

Sale Name: Porky Attack Lowlands

Sale Number: 42-010-24 Seq#: 1

1 - Sale Area

1.2 - Boundaries

1.2.1 - Painted Boundaries (9/19)

The sale boundary and Payment Unit boundaries are marked and identified by red and yellow paint. Exterior sale boundary lines against state are marked with red paint. Interior Payment Unit boundaries are marked with yellow paint. The painted boundary line trees are not Included Timber and are to be protected. Yellow painted trees designating an interior Payment Unit boundary are only to be cut when all surrounding Payment Units have been paid.

2 - Timber Specifications

2.1 - Included Timber

2.1.2 - Clearcut Unit(s) w/o Unmerchantable Trees (8/11)

Within Payment Unit(s) 1-4, cut all trees which meet minimum piece specifications in 2.2 Utilization, except do not cut white pine or hemlock. In addition, within Payment Units 1-4, do not cut any trees that are 26 inches or more at DBH.

Furthermore, within Payment Unit 1, do not cut any cedar. If Payment Unit 1 cannot be harvested due to the amount of cedar, the Purchaser can opt to drop the Payment Unit from the sale via Timber Sale Contract Amendment.

2.2 - Utilization

2.2.9 - No Chipping Permitted (12/08)

Within Payment Unit(s) 1-4, all wood must be removed by whole tree, tree segment, or roundwood. No chipping is permitted due to proximity to deer yard and the need to use the brush for operability in lowland soil types.

4 - Transportation

4.1 - Construction

4.1.4 - Timber Removed for Construction (3/23)

Trees cut or damaged in the process of pre-approved road, landing, or skid trail construction will be decked in an area separate from other Designated Timber and not removed until measured by the Sale Administrator. Payment will be made at contract prices or average prices, if not on the contract.

4.1.6 - Road Construction (4/24)

Construction of new roads or improvements of existing roads shall be done in such a way as to minimize the environmental and visual impacts. Merchantable trees shall be cut and utilized unless otherwise directed. Non-merchantable trees shall be severed and laid flat on the ground. Slash shall be scattered, and not left in windrows and kept a minimum of 10 feet back from the road edge. Stumps shall be set upright, not left on edge, and be moved at least 10 feet away from the road edge. Disturbed soil shall be feathered into the woods and not left in berms or windrows.

4.1.7 - Road Closure (10/11)

All new roads built into the sale must be blocked to vehicle traffic upon completion of the sale. Overgrown roads that are reopened shall be considered new roads. All stumps from road building and landing construction must be reserved to block any newly constructed roads upon completion of the sale. These stumps must be scattered along the road system to prohibit vehicular movement. Contact the Sale Administrator for specific details of design and placement.

4.2 - Maintenance

4.2.1 - Hauling Restriction (12/08)

Hauling may be restricted on forest roads by the Unit Manager or his/her representative. The restriction may occur during spring breakup.

4.2.2 - Fill Material (4/07)

To maintain roads, fill material may be needed in areas where "holes" exist or may be expected to develop. This fill material

should be placed before trucking begins. Contact the Sale Administrator regarding the availability of onsite sand or gravel from adjacent State-owned lands.

4.2.3 - Road maintenance (8/13)

The following road maintenance may be needed: within 60 days of completion of hauling, or if no hauling occurs for 60 days, the road must be maintained and graded. This includes cleaning of drainage areas, grading, crowning and filling with gravel, if necessary. Damages will be assessed if grading/repair does not occur.

4.2.5 - Two Wheel Drive Condition (2/04)

All existing trail roads on and adjacent to the Sale Area must be passable by two-wheel drive traffic for the duration of the sale.

5 - Operations

5.2 - Conduct of Operations

5.2.2 - Hazard Trees/Snags

5.2.2.1 - Den Trees (10/16)

Obvious hollow and/or den trees shall be protected and left standing unless they are a safety hazard.

5.2.3 - Operating Restrictions

5.2.3.1 - Operating Restrictions (9/11)

Within Payment Unit(s) 1-4, unless changed by written agreement, cutting, skidding, and hauling are limited to the period of December 31 to March 31. This restriction is because of wet soils.

5.2.17 - Timber Mats and Interlocking Composite Mats (5/23)

Some roads or skid trails may require extra protection such as that afforded by timber mats, interlocking composite mats, or another approved system. If available, mats may be borrowed from the DNR. A Timber Sale Contract Amendment will be used to document the Purchaser's use of the DNR's mats. Contact the Sale Administrator regarding availability and pick-up. Timber mats are available from various field offices. Composite mats are only available from the Grayling Field Office and the Marquette ICC. The Purchaser is responsible for picking up and hauling the mats to and from the site. The composite mats will require DNR staff onsite for installation and removal. Contact the Sale Administrator to schedule at least 30 days before desired install/removal date. All mats must be cleaned prior to drop off. This may include, but is not limited to, power washing and brushing to remove mud and debris. A charge of \$700.00 per timber mat and \$2,000.00 per composite mat will be assessed for all damaged or non-returned mats. Damage for the crane/timber mats is defined as three or more broken cants. Damage for the composite mats is defined as cracked or broken mats.

5.2.32 - Decking/Landing Restoration (9/13)

All decking and landing areas must have the surface area restored to a condition equal to or better than before. This is to ensure the proper regeneration of the stand. Wood debris, chips and "cookies" from trimmings must be removed or scattered away from landing and loading areas and may not be windrowed on the edge.

5.2.38 - No Decking Against Live Trees (2/04)

Cut products may not be decked against unmarked or designated leave trees.

5.2.41 - Snowmobile Trail Protection (9/11)

Trail 45 is a snowmobile trail and is shown on the Timber Sale Map. Do not cut or damage posts with orange trail markers or traffic control signs. If the trail road is to be used for hauling during the snowmobile season, then a snow-covered base must be left on the trail.

5.4 - Soil Protection

5.4.1 - Rutting Restriction, General (7/16)

Operations are to cease immediately if equipment and weather conditions result in rutting of roads and/or skid trails which are 12 inches or greater in depth and 50 feet in length. The Unit Manager or his/her representative may restrict hauling and/or skidding if ruts exceed the specified depth. With the Unit Manager or his/her representative's approval, the Purchaser may return to the area when the risk of rutting has decreased.

5.4.5 - Soil Caution (11/04)

Care must be taken to minimize soil damage due to wet soils.

5.8 - Protection of Endangered Species

5.8.5 - Protection of Raptor Nests (3/13)

All trees with raptor nests will be protected if found during harvesting operations. Notification will be made to the Unit Manager or his/her representative who will notify the Wildlife Biologist so an onsite evaluation and recommendation can be made, if necessary.

6 - Safety and Fire Prevention

6.2 - Signing

6.2.2 - Snowmobile Trail Posting (10/20)

The Purchaser is responsible for posting and maintaining caution signs on Snowmobile Trail 45 prior to beginning operations during the snowmobile season (approximately December 1 to March 31). The trail must be posted at appropriate distances from the Sale Area to warn of logging activity and truck traffic. Signs must be removed when harvest operations are suspended or completed. The DNR will provide these signs.

7 - Other Conditions

7.2 - Extensions

7.2.5 - Weather-Related Extension (1/13)

If weather conditions during the operating period of this contract prevent harvesting, this sale may qualify for a weather-related extension. If approved, the normal extension fee would be waived. To qualify, there must be a documented attempt each year to harvest in the difficult portion of the sale.



TIMBER SALE MAP

This information provided by authority of Part 525, 1994 PA 451, as amended.

Sale Number

42-010-24

Date

08/16/2024

Forest Management Unit

Newberry Mgt Unit

County

Luce

Mapped By: N Wheeler

Cruised By: Newberry Unit Staff

Scale

1:15,412

Page

1

Of

1

Township
45N

Range
11W

Section(s) and
Subdivision(s)

Sec. 22 S1/2SW; Sec. 27 N1/2NW,SENE,NWNE,S1/2NE,SESE;

Cover Type

A = Aspen	J = Jack Pine	O = Oak	U = Upland Brush
B = Paper Birch	K = Rock	P = Lowland Poplar	UM = Upland Mix Forest
C = Cedar	L = Lowland Brush	Q = Mixed Swamp Conifer	V = Bog or Marsh
D = Treed Bog	LM = Lowland Mix Forest	R = Red Pine	W = White Pine
E = Swamp Hardwoods	M = Maple, Beech, Birch	S = Black Spruce	X = Non Stocked
F = Spruce/Fir	MC = Mixed Conifer	T = Tamarack	Y = Sand
G = Grass	MD = Mixed Deciduous	Z = Water	
H = Hemlock	N = Marsh		

Density

0 = Non Stocked	5 = Pole Timber Medium
1 = Seedling Sapling Poor	6 = Pole Timber Well
2 = Seedling Sapling Medium	7 = Saw Timber Poor
3 = Seedling Sapling Well	8 = Saw Timber Medium
4 = Pole Timber Poor	9 = Saw Timber Well

PORKY ATTACK LOWLANDS

Compartment: 42107 Acres: 80.1

PU # Acres

1 20.8

2 20

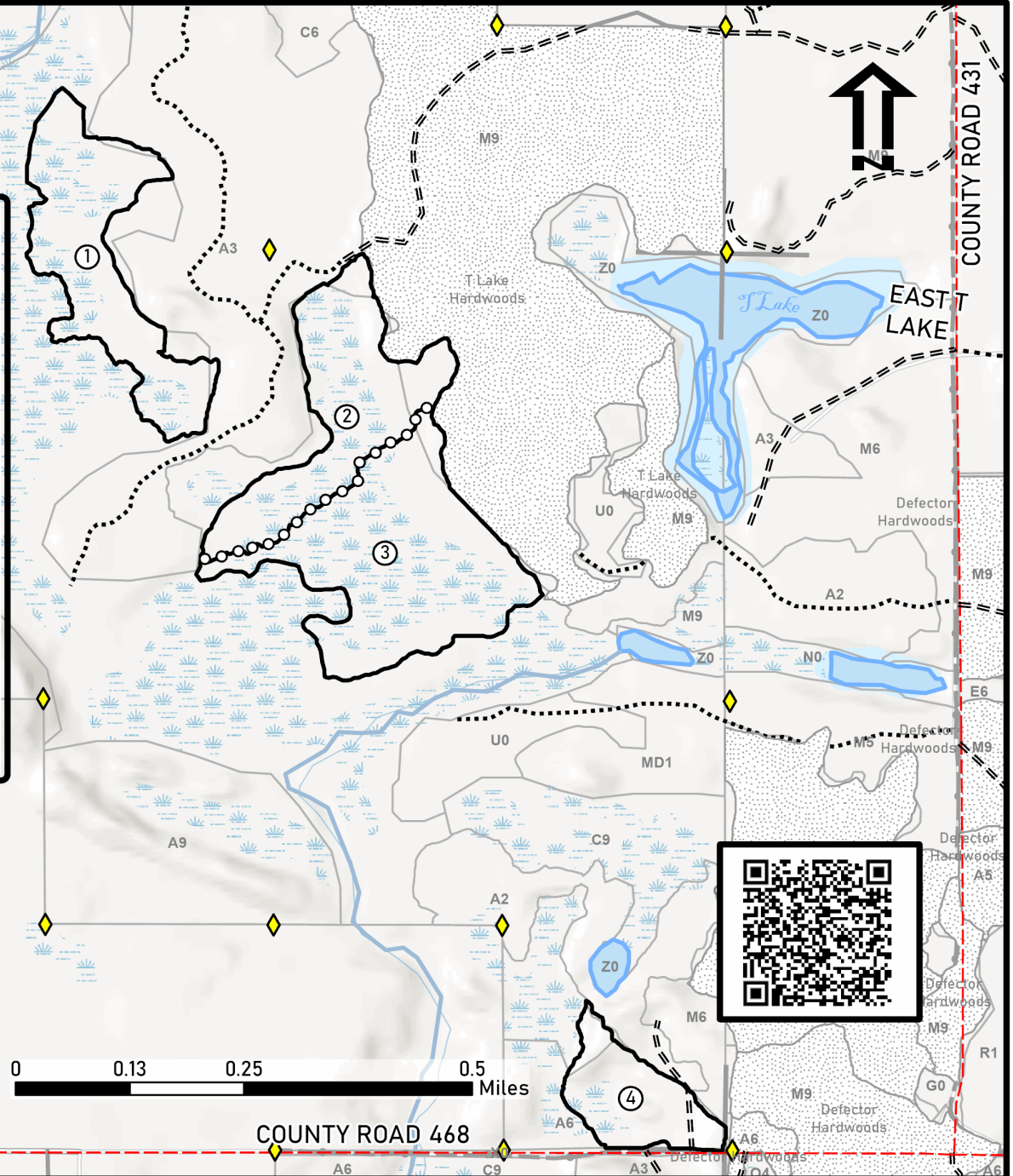
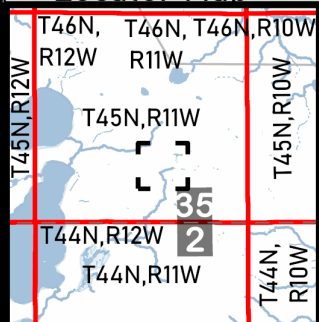
3 29.9

4 9.4

Legend

- Payment Unit
- Against State (Red)
- Payment Unit (Yellow)
- Private Boundary (Blue)
- Survey Grade Corner
- Field Grade Corner
- MIRIS Section Corner
- Perennial River
- Lakes and Rivers
- Secondary Forest
- Road
- Forest Access Route
- County Road - Seasonal
- Private Road

Locator Map



T Lake Hardwoods (42-003-24)
T45N, R11W, SEC. 22; T45N, R11W, SEC. 27; Luce COUNTY

In response to the notice of sale to be held 3:00 p.m. (local time) on May 15, 2025, I am hereby submitting my sealed bid (firm offer) for the following forest products to be cut. Bids for individual species must be at or above the advertised price. All non-responsive bid forms may be rejected.

<u>PRODUCTS & SPECIES</u>	<u>ESTIMATED VOLUME*</u>	<u>ADVERTISED PRICE</u>	<u>BID PRICE/UNIT</u>
Sawtimber			
Black Cherry	22.2 MBF	\$ 98.00/MBF	\$ _____
Red Maple	52.5 MBF	\$ 32.00/MBF	\$ _____
Sugar Maple	139.5 MBF	\$ 291.00/MBF	\$ _____
Pulpwood			
Balsam Fir	92 Cords	\$ 7.55/Cord	\$ _____
Mixed Hardwood	1,319 Cords	\$ 9.40/Cord	\$ _____
Quaking Aspen	209 Cords	\$ 22.65/Cord	\$ _____
Tamarack	50 Cords	\$ 4.55/Cord	\$ _____

*The volumes are statistically estimated within plus (+) or minus (-) 15.63 percent at 95% confidence level. These estimated volumes are final and not subject to adjustment. Prospective bidders are urged to examine this timber and to make their own estimates of quantity and quality.

I understand that any or all bids may be rejected. All bids must be signed and all bid items must be bid or the bid form may be rejected. I also understand that consideration and awarding a contract will be based upon my past performance and ability to complete the contract based upon equipment and staffing subject to my control .

FEDERAL ID: ____ - ____ - ____ or SOCIAL SECURITY NUMBER: ____ - ____ - ____
Company or individual bidding: _____
Company representative's name: _____
Address: _____
City: _____ State: _____ Zip: _____

IF AVAILABLE, PLEASE PLACE THE PERSONALIZED LABEL FROM YOUR PROSPECTUS IN THE ABOVE BOX.

Individual or company representative's signature: _____ Date: _____

Phone number : _____ Email (optional): _____

**THE WINNING BIDDER MUST COMPLETE THE VERIFICATION OF WORKER'S DISABILITY COMPENSATION ACT
COMPLIANCE (ON REVERSE SIDE IF DOUBLE SIDED) WITHIN 21 DAYS OF SALE AWARD DATE**



TIMBER SALE VERIFICATION OF WORKER'S DISABILITY COMPENSATION ACT COMPLIANCE

As required by Act 317, P.A. 1969 (Worker's Compensation) and
Part 5 of Act 451 of 1994, as amended.

FOR DEPARTMENT USE ONLY

Sale Number (XX - XXX - XX - XX)

Forest Management Unit:

VERIFICATION OF WORKER'S DISABILITY COMPENSATION ACT COMPLIANCE

- This verification must be completed and submitted within 21 days of contract award and prior to the issuance of the timber sale contract.
- In addition, if boxes 2B or 2C are checked, then Notice of Exclusion or Certificate of Insurance must be submitted within twenty-one (21) days of the contract award and prior to the issuance of the timber sale contract.
- All information must be typed or printed except for written signatures.

Please Check Appropriate Categories:

1. My business is organized as (you **must** check one of the boxes below):
 - A. ☐ Sole Proprietorship (individual)
 - B. ☐ Partnership
 - C. ☐ Corporation
2. You **must** check one of the boxes below:
 - A. ☐ I certify my business is a sole proprietorship and it has no employees but the sole proprietor. I am not subject to the Worker's Compensation Laws.
 - B. ☐ I certify my business has satisfied its obligation to the Worker's Compensation Act through the use of an approved Notice of Exclusion (BWC-337, Rev. 5/96). I will provide a copy of the Notice of Exclusion within 21 days of the contract award. (For questions or a copy of the BWC-337, please call the Worker's Compensation Bureau at 517-322-1195).
 - C. ☐ I certify my business has a Worker's Compensation Policy. I will provide an original Certificate of Insurance within twenty-one (21) days of the contract award.
3. If you have checked item 2(A) or 2(B), you **must** indicate the number of **both** full-time and part-time employees, other than yourself, including family members and active partners (if none, you must enter "0").

_____ Full-time Employees

_____ Part-time Employees

Name of Business		Federal ID (or) Social Security No.
Address		Telephone ()
City	State	ZIP

I hereby certify that the above information is true and correct. I agree to notify the Michigan DNR of any changes that occur in factors affecting my coverage during any of my present and future operations.

Signature of Owner or Authorized Representative

Title

Date

Please complete the "SEALED BID" information on the next page

Porky Attack Lowlands (42-010-24)
T45N, R11W, SEC. 22; T45N, R11W, SEC. 27; Luce COUNTY

In response to the notice of sale to be held 3:00 p.m. (local time) on May 15, 2025, I am hereby submitting my sealed bid (firm offer) for the following forest products to be cut. Bids for individual species must be at or above the advertised price. All non-responsive bid forms may be rejected.

<u>PRODUCTS & SPECIES</u>	<u>ESTIMATED VOLUME*</u>	<u>ADVERTISED PRICE</u>	<u>BID PRICE/UNIT</u>
Sawtimber			
Paper Birch	5.7 MBF	\$ 35.00/MBF	\$ _____
Pulpwood			
Balsam Fir	526 Cords	\$ 7.55/Cord	\$ _____
Black Spruce	341 Cords	\$ 4.70/Cord	\$ _____
Mixed Aspen	335 Cords	\$ 22.65/Cord	\$ _____
Mixed Hardwood	539 Cords	\$ 9.40/Cord	\$ _____
N. White Cedar	1,005 Cords	\$ 4.55/Cord	\$ _____
Tamarack	4 Cords	\$ 4.55/Cord	\$ _____

*The volumes are statistically estimated within plus (+) or minus (-) 14.60 percent at 95% confidence level. These estimated volumes are final and not subject to adjustment. Prospective bidders are urged to examine this timber and to make their own estimates of quantity and quality.

I understand that any or all bids may be rejected. All bids must be signed and all bid items must be bid or the bid form may be rejected. I also understand that consideration and awarding a contract will be based upon my past performance and ability to complete the contract based upon equipment and staffing subject to my control .

FEDERAL ID: ____ - ____ - ____ or SOCIAL SECURITY NUMBER: ____ - ____ - ____
Company or individual bidding: _____
Company representative's name: _____
Address: _____
City: _____ State: _____ Zip: _____

IF AVAILABLE, PLEASE PLACE THE PERSONALIZED LABEL FROM YOUR PROSPECTUS IN THE ABOVE BOX.

Individual or company representative's signature: _____ Date: _____

Phone number : _____ Email (optional): _____

**THE WINNING BIDDER MUST COMPLETE THE VERIFICATION OF WORKER'S DISABILITY COMPENSATION ACT
COMPLIANCE (ON REVERSE SIDE IF DOUBLE SIDED) WITHIN 21 DAYS OF SALE AWARD DATE**



TIMBER SALE
VERIFICATION OF WORKER'S DISABILITY
COMPENSATION ACT COMPLIANCE

*As required by Act 317, P.A. 1969 (Worker's Compensation) and
Part 5 of Act 451 of 1994, as amended.*

FOR DEPARTMENT USE ONLY

Sale Number (XX - XXX - XX - XX)

Forest Management Unit:

VERIFICATION OF WORKER'S DISABILITY COMPENSATION ACT COMPLIANCE

- This verification must be completed and submitted within 21 days of contract award and prior to the issuance of the timber sale contract.
- In addition, if boxes 2B or 2C are checked, then Notice of Exclusion or Certificate of Insurance must be submitted within twenty-one (21) days of the contract award and prior to the issuance of the timber sale contract.
- All Information must be typed or printed except for written signatures.

Please Check Appropriate Categories:

1. My business is organized as (you **must** check one of the boxes below):
 - A. ☐ Sole Proprietorship (individual)
 - B. ☐ Partnership
 - C. ☐ Corporation
2. You **must** check one of the boxes below:
 - A. ☐ I certify my business is a sole proprietorship and it has no employees but the sole proprietor. I am not subject to the Worker's Compensation Laws.
 - B. ☐ I certify my business has satisfied its obligation to the Worker's Compensation Act through the use of an approved Notice of Exclusion (BWC-337, Rev. 5/96). I will provide a copy of the Notice of Exclusion within 21 days of the contract award. (For questions or a copy of the BWC-337, please call the Worker's Compensation Bureau at 517-322-1195).
 - C. ☐ I certify my business has a Worker's Compensation Policy. I will provide an original Certificate of Insurance within twenty-one (21) days of the contract award.
3. If you have checked item 2(A) or 2(B), you **must** indicate the number of **both** full-time and part-time employees, other than yourself, including family members and active partners (if none, you must enter "0").

_____ Full-time Employees

_____ Part-time Employees

Name of Business		Federal ID (or) Social Security No.
Address		Telephone ()
City	State	ZIP

I hereby certify that the above information is true and correct. I agree to notify the Michigan DNR of any changes that occur in factors affecting my coverage during any of my present and future operations.

Signature of Owner or Authorized Representative

Title

Date

Please complete the "SEALED BID" information on the next page