



**DEPARTMENT OF NATURAL RESOURCES  
STATE OF MICHIGAN  
TIMBER SALE PROSPECTUS #7618**

**SCHEDULED SALE DATE AND TIME:** 2:00 p.m. (local time) on April 9, 2025.

**LOCATION:** SHINGLETON MGMT UNIT, PO BOX 67, M 28 WEST, SHINGLETON, MI 49884.

**PROSPECTUS NOTE:** The bidder is advised to inspect the sale area and review the location, estimated volumes, operating costs and contract terms of proposed sales. Please be aware that some landowners may request 60 days or more notice for access across their land.

Notice is hereby given that bids will be received by the Unit Manager, SHINGLETON MANAGEMENT UNIT, for certain timber on the following described lands:

**Bingo Hardwoods** (41-010-24) / T47N, R17W, SEC. 28, S1/2SW,E1/2SE.  
T47N, R17W, SEC. 33, NW,NENE,SWNE,N1/2SW,SWSW,NWSE.  
Alger County, Advertised Price \$57,806.95, 203.8 Acres, Hardwood, Sugar Maple.

SALE NOTE: Within Payment Unit(s) 1-7 and 9-10, harvesting is not permitted during the period of April 15 to July 15 because of bark slippage.

The Sunrise Grade is a snowmobile trail (Trail 8) and is shown on the Timber Sale Map. See Sale Spec 5.2.41 for restrictions.

A recreation site such as a trail, pathway, or campground is within the sale area or the vicinity. Certain restrictions/specifications may be applicable including time restrictions.

**Blue Skies Red Pine Mix** (41-011-24) / T42N, R15W, SEC. 4 , SWNW,NWSW.  
T42N, R15W, SEC. 5 , SWNW,SW,SE.  
T42N, R15W, SEC. 6 , E1/2SE.  
T42N, R16W, SEC. 1 , NWNW.  
Schoolcraft County, Advertised Price \$226,108.35, 268.7 Acres, Red Pine, Hardwood.

SALE NOTE: Road work is required on this sale. See Sale Spec 4.1.8 for details.

Within Payment Unit(s) 9-11, harvesting is not permitted during the period of April 15 to July 15 because of bark slippage.

Snowmobile Trail #2 is shown on the Timber Sale map. See Sale Spec 5.2.41 for restrictions.

A recreation site such as a trail, pathway, or campground is within the sale area or the vicinity. Certain restrictions/specifications may be applicable including time restrictions.

Bandit Pine (41-016-24) / T48N, R15W, SEC. 17, NW,W1/2NE.

T48N, R15W, SEC. 5 , NWNW.

T48N, R15W, SEC. 6 , NW,NE,SW,NWSE.

T48N, R15W, SEC. 8 , SESW.

Alger County, Advertised Price \$305,423.20, 341.9 Acres, Red Pine, Jack Pine.

SALE NOTE: Road work is required on this sale. See Sale Spec 4.1.8 for details.

The County must be contacted prior to crossing or harvesting in the County Road R-O-W. This applies to H-58.

The Fox River Pathway is a hiking trail and is shown on the Timber Sale Map. See Sale Spec 5.2.40 for restrictions.

H-58 is a snowmobile trail and is shown on the Timber Sale Map. See Sale Spec 5.2.41 for additional information.

A recreation site such as a trail, pathway, or campground is within the sale area or the vicinity. Certain restrictions/specifications may be applicable including time restrictions.

## BID INSTRUCTIONS (VER. 10/10/2022):

### 1. Scheduled Bid Location, Date, and Time (2/11)

Bids must be received by the Unit Manager, SHINGLETON OFFICE, PO Box 67 M 28 West, Shingleton, MI 49884, no later than 2:00 p.m. (local time) on April 9, 2025. For further information concerning this sale, contact Robert Burnham at 906-420-1645 extension n/a.

### 2. Bidder's Qualifications (10/22)

If all or part of a timber sale was prepared by a private contractor, the contractor and that contractor's company are not permitted to bid on the timber sale. A person must be 18 years of age or older to purchase timber. Permanent employees of the Department of Natural Resources or members of their immediate household may not bid. Former employees, in the permanent or seasonal class, may not bid until 3 months after the last day of active duty. Bids will not be accepted from individuals or companies appearing on the DNR/FRD No-Bid List. This list contains the names of purchasers who previously failed to execute a contract within 21-days or who have a history of poor performance.

### 3. Preparation of Sealed Bids (5/16)

Bid Forms may be completed online thru Michigan DNR Timber Sale Online Bidding (OLB) at [www.michigan.gov/timberbidding](http://www.michigan.gov/timberbidding) or by completing the hardcopy Bid Form found in the Timber Sale Prospectus. Hardcopy Bid Forms shall be manually signed in ink. Registration in OLB is considered your 'signature' for all bids submitted thru that system. Bid prices must be entered for each species and product in the Bid Price column for all material subject to bidding and all fill-in blanks must be completed. If erasures or other changes appear on the hardcopy Bid Form, each erasure or change must be initialed by the person signing the bid.

### 4. Submission of Sealed Bids (5/16)

Bid forms may be obtained from the Unit Manager or thru OLB. Bids may be submitted hardcopy or thru OLB. All hardcopy bids must be submitted on the bid form and in an envelope clearly identified as described in this section. NOTE: Only one bid form per bid envelope. Sealed bids must be submitted to the Unit office designated in the prospectus and must be submitted at or prior to the time established in the prospectus. The envelope should show on the outside (a) the sale name or number and (b) the date and time of bid opening, as shown in the prospectus. Bids received after the time specified in the sale prospectus are late bids and will be rejected.

It is possible for a bidder to submit multiple bids on a single sale. For example, a bid may be submitted hardcopy and a bid may be submitted thru OLB. Or, two bidders from the same company could both submit bids on the same sale. If this were to happen, the State would accept all bids received and award the contract accordingly. All bidding and contractual requirements would apply to all bids received.

### 5. Public Opening of Sealed Bids (7/16)

If conditions permit, the sealed bids will be publicly opened and posted at the time and place set in the prospectus.

If a bidder, present at a bid opening, has submitted bids on more than one sale, that bidder may withdraw their unopened bid envelopes or announce the withdrawal of their online bid after being declared the successful bidder on one sale.

### 6. Award of Contract (1/11)

Award of the contract will be made to the Bidder whose bid, conforming to the prospectus, is most advantageous to the State of Michigan on the basis of total value at rates bid for the estimated quantities. The State reserves the right to reject any bid or waive any minor irregularity in bids received. A written award mailed (or otherwise furnished) to the successful Bidder shall be deemed to result in a binding contract without further action by either party.

### 7. Down Payment (1/11)

The Bidder to whom award is made must make a down payment within 21 days of the sale award. The amount of the down payment will be calculated as shown in the Bond and Payment Schedule of this prospectus. Only cash may be used to meet this requirement.

### 8. Performance Security (1/11)

As guarantee of faithful performance, a cash bond, certificate of deposit, surety bond or irrevocable letter of credit (LOC) is required within 21 days of the sale award. The amount of the performance security is shown in the Bond and

Payment Schedule of this prospectus. If an LOC or surety is used, the coverage must extend for at least 6 months beyond the contract expiration.

#### 9. Worker's Compensation (10/22)

Purchaser shall obtain worker's compensation insurance to cover claims under Michigan's Worker's Disability Compensation Act of 1969 or similar employee benefit act of any other state applicable to an employee. Verification of Worker's Disability Compensation Act Compliance must be completed and submitted within 21 days of contract award and prior to the issuance of the timber sale contract. In addition, if applicable, Notice of Exclusion or Certificate of Insurance must also be submitted.

#### 10. Timber Sale Contract (10/22)

Additional conditions and requirements common to all timber sales are listed on the timber sale contract (R4031) and are available on line at [www.michigan.gov/timber](http://www.michigan.gov/timber). Contact the Unit Manager for additional information or a sample contract. Within 21 days of the date of the award letter, the bidder must sign the contract and provide the required down payment, performance security, and verification of worker's disability compensation. The down payment and performance security shall be in accordance with the provisions of the timber sale contract, in the sums stated in this prospectus. If these actions are not taken, then the Bidder, the Bidder's corporation, and the corporation's principals may not be permitted to bid on State timber sales for a period of 3 months after the first offense, 6 months after the second offense, and 1 year after the third offense. An offense will only be counted against the Bidder for 5 years. In addition, the Bidder certifies that if awarded this contract, the Bidder will complete the timber sale contract in accordance with its terms and any modifications thereof including requirements to purchase, cut, and remove the included timber by the expiration date.

Payment Unit values in the State Forest Timber Sale Contract are calculated based on the advertised value of the Payment Unit as a percentage of the total advertised value of the contract. The advertised value of each Payment Unit is given in the Description of Timber by Payment Unit table on the Timber Sale Information page. For example, if the value of Payment Unit 1 is advertised as \$1,500 and the total Timber Sale value is advertised as \$10,000, the contract price for Payment Unit 1 will be 15% of the total bid price ( $\$1,500/\$10,000 * 100$ ).

#### 11. Disclaimer of Estimates and Bidder's Warranty of Inspection (10/22)

Before submitting this bid, the Bidder is advised and cautioned to inspect the sale area, review the requirements of the sale contract, and take other steps as may be reasonably necessary to ascertain the location, estimated volumes, construction estimates, and operating costs of the proposed sale. Failure to do so will not relieve the Bidder from responsibility for completing the contract.

The Bidder warrants that this bid is submitted solely on the basis of the Bidder's examination and inspection of the quality and quantity of the timber offered for sale and the Bidder's opinion of the value thereof and the costs of recovery. No reliance should be placed on the State of Michigan's estimates of timber quality, quantity or costs of recovery. Bidder further acknowledges that the State of Michigan: (i) expressly disclaims any warranty of fitness of timber for any purpose; (ii) offers this timber as is without any warranty of quality (merchantability) or quantity and (iii) expressly disclaims any warranty as to the quantity or quality of timber sold.

#### 12. Certification and Chain-of-Custody (10/22)

Unless otherwise indicated in the contract under section 7 – Other Conditions of the Sale Specific Conditions & Requirements, the area encompassed by this timber sale is certified to the standards of the Forest Stewardship Council (FSC) - Certificate #SCS-FM/COC-00090N and the Sustainable Forestry Initiative (SFI) - Certificate #NSF-SFIS-5Y031-SF5. Forest products from this sale may be delivered to the mill as "FSC 100% and / or SFI certified" as long as the contractor hauling the forest products is chain-of-custody (COC) certified or covered under a COC certificate from the destination mill. The purchaser is responsible for maintaining COC after leaving the sale area.

#### 13. Good Neighbor Authority (GNA) Requirements (10/22)

If the name of this timber sales contains the acronym GNA, it is authorized by the Good Neighbor Authority (GNA) and covered by various agreements between the U.S. Forest Service and the State. The timber sale occurs on federal land and the following conditions apply:

GNA contracts on US Forest Service land will not be awarded to purchasers on the Federal list of excluded parties. The System for Award Management (SAM) will be checked for active excluded parties prior to award of contract. In

addition, the Bidder to whom award is made must complete an Assurance Regarding Felony Conviction or Tax Delinquent Status for Corporate Applicants (AD-3031).

14. Good Neighbor Authority (GNA) Requirements, con't (10/22)

Bidder certifies, by signing this bid form, that to the best of Bidder's knowledge that the following representations are accurate and complete.

- a. That the Bidder and its principals are not presently debarred, suspended, proposed for debarment, declared ineligible, or voluntary excluded from timber sales (covered transactions) by any Federal department or agency.
- b. That the Bidder and its principals have not within a 3-year period preceding this bid been convicted of or had a civil judgment rendered against them for commission of fraud or a criminal offense in connection with obtaining , attempting to obtain, or performing a public (Federal, State, or local) transaction or contract under a public transaction; violation of Federal or State antitrust statutes or commission of embezzlement, theft, forgery, bribery, falsification or destruction of records, making false statements, or receiving stolen property.
- c. That the Bidder and its principals are not presently indicted for or otherwise criminally or civilly charged by a governmental entity (Federal, State, or local) with commission of any of the offenses enumerated in paragraph b of this certification.
- d. That the Bidder and its principals have not within a 3-year period preceding this bid had one or more public transactions (Federal, State, or local) terminated for breach or default of a timber or forest product contract.

Bidders that cannot certify this requirement, in whole or in part, shall submit an explanation with their bid.

Scott Bowen  
Director



## TIMBER SALE INFORMATION

Bingo Hardwoods (41-010-24)  
T47N, R17W, SEC. 28; T47N, R17W, SEC. 33.  
Alger County (Advertised Price \$57,806.95)

SALE NOTE: Within Payment Unit(s) 1-7 and 9-10, harvesting is not permitted during the period of April 15 to July 15 because of bark slippage.

The Sunrise Grade is a snowmobile trail (Trail 8) and is shown on the Timber Sale Map. See Sale Spec 5.2.41 for restrictions.

A recreation site such as a trail, pathway, or campground is within the sale area or the vicinity. Certain restrictions/specifications may be applicable including time restrictions.

A timber sale contract for this lump sum, sealed bid timber sale will be awarded to the responsible bidder offering the highest sealed bid price. All units of volume listed below were estimated using the Inventory Manager computer program and the new Michigan taper model. Bids must be at or above the following advertised price for each product and species:

<u>PRODUCTS &amp; SPECIES</u>	<u>ESTIMATED UNITS*</u>	<u>ADVERTISED PRICE</u>
Sawtimber		
Basswood	11.8 MBF	\$ 76.00 / MBF
Black Cherry	5.0 MBF	\$ 82.00 / MBF
Sugar Maple	114.0 MBF	\$ 274.00 / MBF
Pulpwood		
Balsam Fir	35 Cords	\$ 11.00 / Cord
Mixed Hardwood	1,307 Cords	\$ 18.05 / Cord
Quaking Aspen	36 Cords	\$ 29.90 / Cord
White Pine	3 Cords	\$ 17.90 / Cord
White Spruce	19 Cords	\$ 8.30 / Cord

\* The total volume is statistically estimated within plus (+) or minus (-) 11.98 percent. There are an estimated 1,705 cords on this timber sale, plus or minus 204 cords at the 95% confidence level. The estimated units are final and not subject to adjustment. Prospective bidders are urged to examine this timber and to make their own estimates of quantity and quality.

### **BOND AND PAYMENT SCHEDULE:**

1. A bond in the amount of \$2,890.00 to insure faithful performance of the conditions of the contract will be deposited by the successful bidder within 21 days of the sale award.
2. Cutting in any sale or unit without the required advance payment would be considered a trespass.
3. Total payment must be paid in advance or according to the following schedule :
  - (a) Ten percent (10%) of the sale value must be paid within 21 days of the sale award.
  - (b) The 10% down payment will be credited towards the first unit cut.
  - (c) Payment for each of the following units must be made before cutting begins in that unit:

<u>PAYMENT UNIT NUMBER</u>	<u>PERCENT OF TOTAL SALE VALUE</u>
01	8.7%
02	17.7%
03	11.6%
04	17.3%
05	15.2%
06	7.5%
07	4.8%
08	1.2%
09	15.3%
10	0.7%

4. If no cutting takes place, the 10% down payment will not be refunded.
5. Operations on the contract issued will terminate on 06/30/2028.

### **SALE STATISTICS**

Volumes were calculated in cubic feet using the Michigan taper model. Cubic foot volume includes all wood inside bark for the product indicated. For display purposes, cubic feet were converted to cords and MBF using a simple conversion factor, e.g. 79 cubic feet per cord and 185 cubic feet per MBF. The cubic foot volumes are precise; the cords and MBF volumes are not. Cubic foot volume cannot be directly converted to cords or boards with precision.

## SALE VOLUMES

The total estimated sale volume may not equal the sum of the species/products due to the nature of statistical calculations associated with double sampling methodology.

VOLUME			STATISTICAL RANGE IN CORDS	
TOTAL CUBIC FEET	TOTAL CORDS	PERCENT ERROR	MINIMUM	MAXIMUM
134,732	1,705	11.98%	1,501	1,910

## VDU VOLUMES

A VDU is a Volume Determination Unit. Volumes and their associated statistics are calculated at the VDU level and summarized to the sale level. There is often a one to one relationship between a VDU and a Payment Unit, but not always, depending on the cruise design. Refer to the VDU TO PAYMENT UNIT table.

	VOLUME			RANGE IN CORDS	
VDU	TOTAL CUBIC FEET	TOTAL CORDS	PERCENT ERROR	MINIMUM	MAXIMUM
60	1,369	17	90.45%	2	33
65	25,814	327	28.38%	234	420
67	21,735	275	30.47%	191	359
73	74,091	938	16.34%	785	1,091
75	9,594	121	45.03%	67	176
77	2,128	27	97.37%	1	53
<b>TOTAL:</b>	<b>134,732</b>	<b>1,705</b>		<b>1,279</b>	<b>2,132</b>

## VDU TO PAYMENT UNIT

When a VDU is associated with more than one Payment Unit (PU), the VDU volumes are assigned to the PU based on acres of the VDU within the PU.

VDU	VDU ACRES	PU	PU ACRES
60	2.3	10	2.3
65	42.0	1	27.1
65	42.0	7	14.9
67	23.7	9	23.7
73	102.9	2	29.4
73	102.9	3	19.3
73	102.9	4	28.8
73	102.9	5	25.4
75	18.0	6	18.0
77	14.9	8	14.9
<b>TOTAL:</b>	<b>554.5</b>		<b>203.8</b>



**DESCRIPTION OF TIMBER BY PAYMENT UNIT (PU)**

PU	MARKET GROUP	PRODUCT	QUANTITY	UNIT	ACRES	ADVERTISE PRICE
1	Basswood Sugar Maple Balsam Fir Mixed Hardwood <i>Basswood</i> <i>Black Cherry</i> <i>Ironwood</i> <i>Red Maple</i> <i>Sugar Maple</i> Quaking Aspen White Spruce	Sawtimber  Pulpwood	2.6 5.0 12 160 30 32 2 5 91 13 7	MBF MBF Cords Cords Cords Cords Cords Cords Cords Cords Cords	27.1	\$5,034.40
2	Basswood Black Cherry Sugar Maple Balsam Fir Mixed Hardwood <i>Basswood</i> <i>Black Cherry</i> <i>Sugar Maple</i> White Spruce	Sawtimber  Pulpwood	1.6 0.6 22.9 5 204 1 13 190 1	MBF MBF MBF Cords Cords Cords Cords Cords Cords	29.4	\$10,190.90
3	Basswood Black Cherry Sugar Maple Balsam Fir Mixed Hardwood <i>Basswood</i> <i>Black Cherry</i> <i>Sugar Maple</i>	Sawtimber  Pulpwood	1.1 0.4 15.1 3 135 1 9 125	MBF MBF MBF Cords Cords Cords Cords Cords	19.3	\$6,723.55
4	Basswood Black Cherry Sugar Maple Balsam Fir Mixed Hardwood <i>Basswood</i> <i>Black Cherry</i> <i>Sugar Maple</i> White Spruce	Sawtimber  Pulpwood	1.6 0.6 22.5 4 200 1 13 186 1	MBF MBF MBF Cords Cords Cords Cords Cords Cords	28.8	\$9,998.10
5	Basswood Black Cherry Sugar Maple Balsam Fir Mixed Hardwood <i>Basswood</i> <i>Black Cherry</i> <i>Sugar Maple</i>	Sawtimber  Pulpwood	1.4 0.5 19.8 4 176 1 11 164	MBF MBF MBF Cords Cords Cords Cords Cords	25.4	\$8,793.40
6	Black Cherry Sugar Maple Mixed Hardwood <i>Black Cherry</i> <i>Red Maple</i> <i>Sugar Maple</i> White Spruce	Sawtimber  Pulpwood	2.9 9.0 90 5 4 81 3	MBF MBF Cords Cords Cords Cords Cords	18.0	\$4,353.20
7	Basswood Sugar Maple Balsam Fir	Sawtimber  Pulpwood	1.5 2.7 7	MBF MBF Cords	14.9	\$2,779.75

**DESCRIPTION OF TIMBER BY PAYMENT UNIT (PU), CON'T**

PU	MARKET GROUP	PRODUCT	QUANTITY	UNIT	ACRES	ADVERTISE PRICE
7 con't	Mixed Hardwood	Pulpwood	89	Cords		
	Basswood		17	Cords		
	Black Cherry		18	Cords		
	Ironwood		1	Cords		
	Red Maple		3	Cords		
	Sugar Maple		50	Cords		
	Quaking Aspen		7	Cords		
	White Spruce		4	Cords		
8	Mixed Hardwood	Pulpwood	6	Cords	14.9	\$665.30
	Black Cherry		2	Cords		
	Paper Birch		2	Cords		
	Sugar Maple		2	Cords		
	Quaking Aspen		16	Cords		
	White Pine		3	Cords		
	White Spruce		3	Cords		
	9		Basswood	Sawtimber		
Sugar Maple			16.5	MBF		
Mixed Hardwood		Pulpwood	231	Cords		
Basswood			7	Cords		
Sugar Maple			224	Cords		
10		Sugar Maple	Sawtimber	0.5	MBF	2.3
	Mixed Hardwood	Pulpwood	16	Cords		
	Beech		5	Cords		
	Sugar Maple		11	Cords		
	TOTAL:			130.8	MBF	
TOTAL:			1,400	Cords		

## Sale Specific Conditions & Requirements

**Sale Name: Bingo Hardwoods**

**Sale Number: 41-010-24 Seq#: 1**

### 1 - Sale Area

#### 1.2 - Boundaries

##### 1.2.1 - Painted Boundaries (9/19)

The sale boundary and Payment Unit boundaries are marked and identified by blue, red, and yellow paint. Exterior sale boundary lines against private property are marked with blue paint. Exterior sale boundary lines against state are marked with red paint. Interior Payment Unit boundaries are marked with yellow paint. The painted boundary line trees are not Included Timber and are to be protected unless marked with orange paint.

### 2 - Timber Specifications

#### 2.1 - Included Timber

##### 2.1.1 - Clearcut Unit(s) with Unmerchantable Trees (6/14)

Within Payment Unit(s) 8, cut all trees that are two (2) inches or more at DBH except oak and planted fruit trees. Special protection trees identified in accordance with condition 3.4.2, within clearcutting unit boundaries, are not Included Timber and are to be protected.

##### 2.1.3 - Cut Tree Marked Unit(s) (12/08)

Within Payment Unit(s) 1-7 and 9-10, all trees are designated for cutting when marked with orange paint above and below stump height, regardless of merchantability.

### 3 - Payments

#### 3.3 - Pre-measured Sales

##### 3.3.4 - Dividing Payment Units (7/14)

Payment Unit(s) that are \$20,000 or greater in value may be divided at the request of the Purchaser and upon approval of the Unit Manager. Dividing Payment Units is a contract modification which requires a Timber Sale Contract Amendment.

#### 3.4 - Damaged Timber

##### 3.4.2 - Special Protection Trees (1/25)

The Purchaser shall not cut live or dead special protection trees within cutting units or clearings. Special protection trees are oak and planted fruit trees. If Purchaser's operations have cut or damaged special protection trees through carelessness, the Purchaser shall pay \$100 as fixed, agreed and liquidated damages for each special protection tree cut or damaged. Such payment does not constitute ownership of the undesignated timber.

### 4 - Transportation

#### 4.1 - Construction

##### 4.1.3 - Slash and Earthen Piles (8/04)

Piles or windrows of earth along roads and landings that have been widened or constructed shall be leveled. Slash from road maintenance or construction, including stumps, shall be dispersed throughout the sale.

##### 4.1.4 - Timber Removed for Construction (3/23)

Trees cut or damaged in the process of pre-approved road, landing, or skid trail construction will be decked in an area separate from other Designated Timber and not removed until measured by the Sale Administrator. Payment will be made at contract prices or average prices, if not on the contract.

##### 4.1.6 - Road Construction (4/24)

Construction of new roads or improvements of existing roads shall be done in such a way as to minimize the environmental and visual impacts. Merchantable trees shall be cut and utilized unless otherwise directed. Non-merchantable trees shall be severed and laid flat on the ground. Slash shall be scattered, and not left in windrows and kept a minimum of 10 feet back from the road edge. Stumps shall be set upright, not left on edge, and be moved at least 10 feet away from the road edge. Disturbed soil shall be feathered into the woods and not left in berms or windrows.

#### 4.1.7 - Road Closure (10/11)

All new roads built into the sale must be blocked to vehicle traffic upon completion of the sale. Overgrown roads that are reopened shall be considered new roads. In general, this will require constructing a four (4') foot high berm of stumps and logs covered with earth. Stumps and brush must be placed along the remainder of the trail. These roads must be rendered impassable to cars and trucks. All stumps from road building and landing construction must be reserved to block any newly constructed roads upon completion of the sale. These stumps must be scattered along the road system to prohibit vehicular movement. Contact the Sale Administrator for specific details of design and placement.

#### 4.2 - Maintenance

##### 4.2.2 - Fill Material (4/07)

To maintain roads, fill material may be needed in areas where "holes" exist or may be expected to develop. This fill material should be placed before trucking begins.

##### 4.2.4 - Grading (10/16)

For completion of the sale, state forest roads must be graded. In general, this will require a road grader or bulldozer to shape up the roads after forest products have been hauled off site. This includes cleaning of drainage areas, grading, crowning and filling with gravel, if necessary. The grading equipment to be used must be approved by the Unit Manager or his/her representative.

### 5 - Operations

#### 5.2 - Conduct of Operations

##### 5.2.2 - Hazard Trees/Snags

###### 5.2.2.1 - Den Trees (10/16)

Obvious hollow and/or den trees shall be protected and left standing unless they are a safety hazard.

##### 5.2.3 - Operating Restrictions

###### 5.2.3.3 - Bark Slippage Restriction (3/09)

Within Payment Unit(s) 1-7 and 9-10, unless changed by written agreement, cutting and skidding are not permitted during the period of April 15 to July 15. This restriction is because of bark slippage.

##### 5.2.32 - Decking/Landing Restoration (9/13)

All decking and landing areas must have the surface area restored to a condition equal to or better than before. This is to ensure the proper regeneration of the stand. Wood debris, chips and "cookies" from trimmings must be removed or scattered away from landing and loading areas and may not be windrowed on the edge.

##### 5.2.41 - Snowmobile Trail Protection (9/11)

The Sunrise Grade is a snowmobile trail (Trail 8) and is shown on the Timber Sale Map. Do not cut or damage posts with orange trail markers or traffic control signs. If the trail is used for hauling, it must be graded to the satisfaction of the Unit Manager or his/her representative prior to December 1. The Sunrise Grade cannot be used during the Snowmobile Season, December 1 through March 31. No decking of forest products will be permitted along the snowmobile trail at any time.

#### 5.7 - Protection of Historical Sites

##### 5.7.1 - Historical Sites (7/12)

The Purchaser shall not cut live or dead trees or operate equipment within historical sites. Historical sites are identified on the Timber Sale Map. The Purchaser shall protect historical sites from damage by the Purchaser's operations. If Purchaser's operations have cut or damaged historical sites through carelessness, the Purchaser shall pay \$5,000 as fixed, agreed and liquidated damages for each acre or part thereof cut or damaged. The trail road running through the site may be used but operations must stay within the footprint of the road and no decking along the road in this area.

#### 5.8 - Protection of Endangered Species

##### 5.8.3 - Red Shoulder Hawk or Goshawk (1) (2/16)

In the event that an active red shoulder hawk or goshawk nest is found, the contract may be amended to protect the nest site until the nest is determined to be inactive. The value of the trees in this excluded area will be refunded or credited to the Purchaser. The nest will be buffered with a five-chain radius (eight acre) protection area, centered on the nest tree, in which

there will be no cutting or new roads constructed. Avoid human disturbance, including loading and skidding, in the protection area.

An additional zone of five chains (ten chains centered on the active nest tree) will be established in which there is no management activity from April 1 to July 30. Limit biomass harvesting and chipping operations within this ten-chain zone, retain the maximum one-third of residues per the Woody Biomass Harvesting Guidelines (Michigan DNR 2010). Nests determined to be inactive will be protected with a one-chain no-harvest buffer.

## **6 - Safety and Fire Prevention**

### **6.2 - Signing**

#### **6.2.1 - Road Posting (10/20)**

The Purchaser is responsible for posting and maintaining caution signs on H-58 and the Sunrise Grade prior to beginning operations. The road must be posted at appropriate distances from the sale area to warn of logging activity and truck traffic. Signs must be removed when harvest operations are suspended or completed. The Purchaser will provide these signs.

**TIMBER SALE MAP**

This information provided by authority of Part 525, 1994 PA 451, as amended.

Sale Number

**41-010-24**

Date

**12/27/2024**

Forest Management Unit

Shingleton Mgt Unit

County

Alger

Mapped By: S. Kentner

Cruised By: S. Kentner

Scale

**1:15,840**

Page

**1**

Of

**1**Township  
47NRange  
17WSection(s) and  
Subdivision(s)

Sec. 28 S1/2SW,E1/2SE; Sec. 33 NW,NENE,SWNE,N1/2SW,SWSW,NWSE;

**Cover Type**

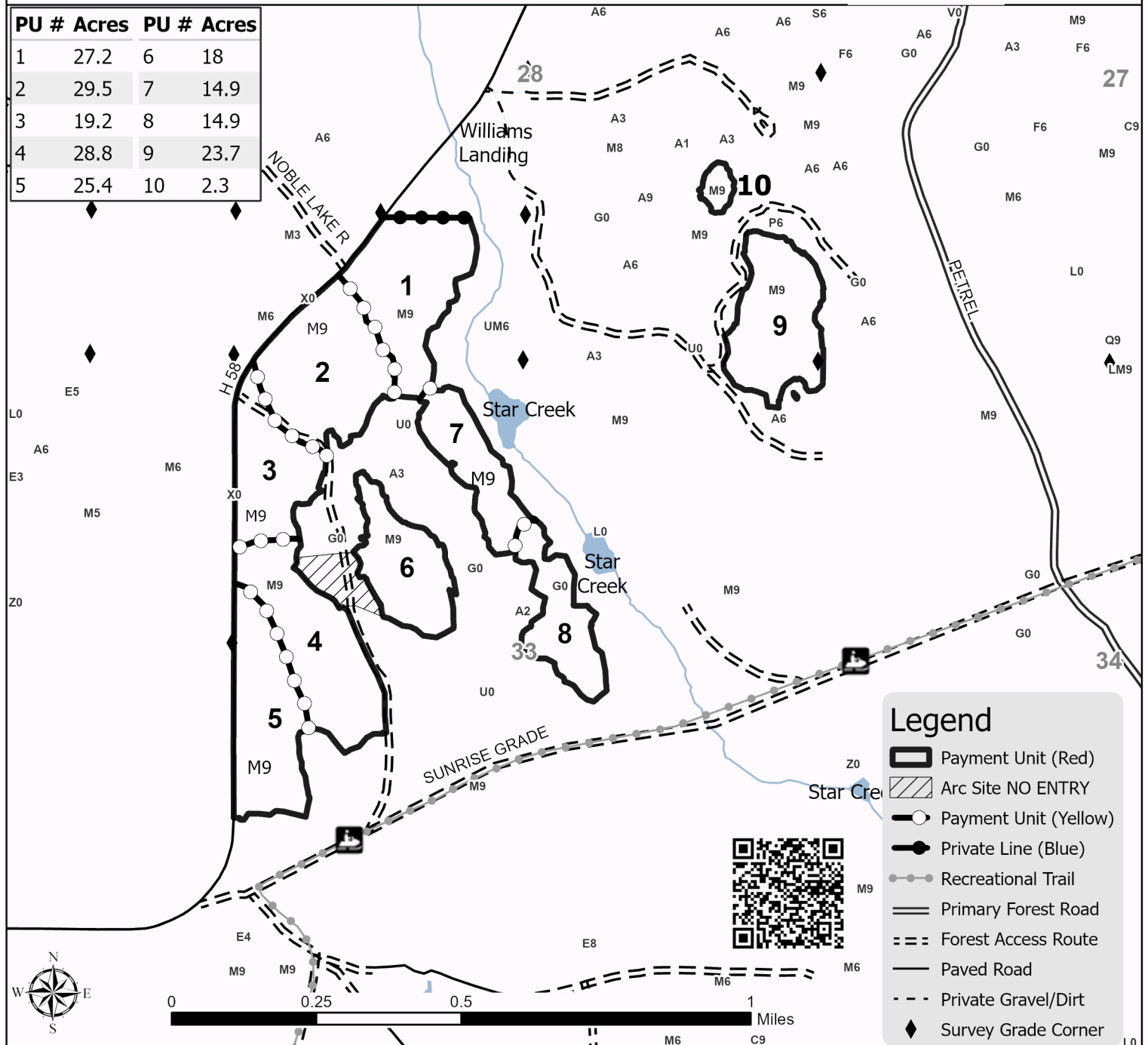
A = Aspen	J = Jack Pine	O = Oak	U = Upland Brush
B = Paper Birch	K = Rock	P = Lowland Poplar	UM = Upland Mix Forest
C = Cedar	L = Lowland Brush	Q = Mixed Swamp Conifer	V = Bog or Marsh
D = Treed Bog	LM = Lowland Mix Forest	R = Red Pine	W = White Pine
E = Swamp Hardwoods	M = Maple, Beech, Birch	S = Black Spruce	X = Non Stocked
F = Spruce/Fir	MC = Mixed Conifer	T = Tamarack	Y = Sand
G = Grass	MD = Mixed Deciduous		Z = Water
H = Hemlock	N = Marsh		

**Density**

0 = Non Stocked	5 = Pole Timber Medium
1 = Seedling Sapling Poor	6 = Pole Timber Well
2 = Seedling Sapling Medium	7 = Saw Timber Poor
3 = Seedling Sapling Well	8 = Saw Timber Medium
4 = Pole Timber Poor	9 = Saw Timber Well

**Bingo Hardwoods**  
**203.8 Acres**

PU #	Acres	PU #	Acres
1	27.2	6	18
2	29.5	7	14.9
3	19.2	8	14.9
4	28.8	9	23.7
5	25.4	10	2.3



## TIMBER SALE INFORMATION

### Blue Skies Red Pine Mix (41-011-24)

T42N, R15W, SEC. 4; T42N, R15W, SEC. 5; T42N, R15W, SEC. 6; T42N, R16W, SEC. 1.  
Schoolcraft County (Advertised Price \$226,108.35)

SALE NOTE: Road work is required on this sale. See Sale Spec 4.1.8 for details.

Within Payment Unit(s) 9-11, harvesting is not permitted during the period of April 15 to July 15 because of bark slippage.

Snowmobile Trail #2 is shown on the Timber Sale map. See Sale Spec 5.2.41 for restrictions.

A recreation site such as a trail, pathway, or campground is within the sale area or the vicinity. Certain restrictions/specifications may be applicable including time restrictions.

A timber sale contract for this lump sum, sealed bid timber sale will be awarded to the responsible bidder offering the highest sealed bid price. All units of volume listed below were estimated using the Inventory Manager computer program and the new Michigan taper model. Bids must be at or above the following advertised price for each product and species:

<u>PRODUCTS &amp; SPECIES</u>	<u>ESTIMATED UNITS*</u>		<u>ADVERTISED PRICE</u>
Sawtimber			
Black Cherry	1.2	MBF	\$ 82.00 / MBF
Paper Birch	2.8	MBF	\$ 44.00 / MBF
Red Maple	61.7	MBF	\$ 90.00 / MBF
Sugar Maple	20.5	MBF	\$ 274.00 / MBF
Yellow Birch	3.8	MBF	\$ 58.00 / MBF
Pulpwood			
Balsam Fir	53	Cords	\$ 11.00 / Cord
Black Spruce	85	Cords	\$ 8.30 / Cord
Jack Pine	35	Cords	\$ 35.50 / Cord
Mixed Aspen	739	Cords	\$ 29.90 / Cord
Mixed Hardwood	639	Cords	\$ 18.05 / Cord
Paper Birch	46	Cords	\$ 9.35 / Cord
Red Pine	1,828	Cords	\$ 92.25 / Cord
White Pine	518	Cords	\$ 17.90 / Cord

\* The total volume is statistically estimated within plus (+) or minus (-) 10.23 percent. There are an estimated 4,152 cords on this timber sale, plus or minus 425 cords at the 95% confidence level. The estimated units are final and not subject to adjustment. Prospective bidders are urged to examine this timber and to make their own estimates of quantity and quality.

### **BOND AND PAYMENT SCHEDULE:**

1. A bond in the amount of \$11,305.00 to insure faithful performance of the conditions of the contract will be deposited by the successful bidder within 21 days of the sale award.
2. Cutting in any sale or unit without the required advance payment would be considered a trespass.
3. Total payment must be paid in advance or according to the following schedule:
  - (a) Ten percent (10%) of the sale value must be paid within 21 days of the sale award.
  - (b) The 10% down payment will be credited towards the first unit cut.

(c) Payment for each of the following units must be made before cutting begins in that unit:

PAYMENT UNIT NUMBER	PERCENT OF TOTAL SALE VALUE
01	5.3%
02	5.2%
03	5.7%
04	9.8%
05	9.3%
06	7.4%
07	12.2%
08	9.6%
09	1.7%
10	2.7%
11	4.0%
12	0.0%
13	4.8%
14	0.8%
15	8.7%
16	2.0%
17	3.2%
18	5.0%
19	1.8%
20	0.8%

4. If no cutting takes place, the 10% down payment will not be refunded.
5. Operations on the contract issued will terminate on 06/30/2028.

SALE STATISTICS

Volumes were calculated in cubic feet using the Michigan taper model . Cubic foot volume includes all wood inside bark for the product indicated. For display purposes, cubic feet were converted to cords and MBF using a simple conversion factor, e.g. 79 cubic feet per cord and 185 cubic feet per MBF. The cubic foot volumes are precise; the cords and MBF volumes are not. Cubic foot volume cannot be directly converted to cords or boards with precision.

SALE VOLUMES

The total estimated sale volume may not equal the sum of the species/products due to the nature of statistical calculations associated with double sampling methodology.

VOLUME		PERCENT ERROR	STATISTICAL RANGE IN CORDS	
TOTAL CUBIC FEET	TOTAL CORDS		MINIMUM	MAXIMUM
328,046	4,152	10.23%	3,727	4,578



## VDU VOLUMES

A VDU is a Volume Determination Unit. Volumes and their associated statistics are calculated at the VDU level and summarized to the sale level. There is often a one to one relationship between a VDU and a Payment Unit, but not always, depending on the cruise design. Refer to the VDU TO PAYMENT UNIT table.

VDU	VOLUME		PERCENT ERROR	RANGE IN CORDS	
	TOTAL CUBIC FEET	TOTAL CORDS		MINIMUM	MAXIMUM
1	112,378	1,423	15.54%	1,202	1,644
2	15,258	193	34.74%	126	260
3	27,569	349	27.98%	251	447
4	22,006	279	36.81%	176	381
5	351	4	119.06%	0	10
6	31,968	405	47.15%	214	595
7	5,582	71	70.12%	21	120
8	56,069	710	26.94%	519	901
9	6,150	78	89.81%	8	148
10	15,681	198	43.11%	113	284
11	12,428	157	59.47%	64	251
12	19,838	251	58.72%	104	399
13	2,769	35	45.16%	19	51
<b>TOTAL:</b>	<b>328,046</b>	<b>4,152</b>		<b>2,816</b>	<b>5,490</b>

## VDU TO PAYMENT UNIT

When a VDU is associated with more than one Payment Unit (PU), the VDU volumes are assigned to the PU based on acres of the VDU within the PU.

VDU	VDU ACRES	PU	PU ACRES
1	121.5	1	11.4
1	121.5	2	11.1
1	121.5	3	12.1
1	121.5	4	20.8
1	121.5	5	19.9
1	121.5	6	12.4
1	121.5	7	25.9
1	121.5	8	7.9
2	21.0	6	4.5
2	21.0	8	16.5
3	28.3	9	10.7
3	28.3	10	17.6
4	17.5	11	17.5
5	1.3	12	1.3
6	7.5	13	7.5
7	3.8	14	3.8
8	35.6	15	35.6
9	4.0	16	4.0
10	9.2	17	9.2
11	9.5	18	9.5
12	8.6	19	8.6
13	0.9	20	0.9
<b>TOTAL:</b>	<b>1,168.5</b>		<b>268.7</b>

**DESCRIPTION OF TIMBER BY PAYMENT UNIT (PU)**

PU	MARKET GROUP	PRODUCT	QUANTITY	UNIT	ACRES	ADVERTISE PRICE
1	Mixed Aspen	Pulpwood	3	Cords	11.4	\$12,082.20
	<i>B. T. Aspen</i>		3	<i>Cords</i>		
	Red Pine		130	Cords		
2	Mixed Aspen	Pulpwood	3	Cords	11.1	\$11,713.20
	<i>B. T. Aspen</i>		3	<i>Cords</i>		
	Red Pine		126	Cords		
3	Mixed Aspen	Pulpwood	3	Cords	12.1	\$12,820.20
	<i>B. T. Aspen</i>		3	<i>Cords</i>		
	Red Pine		138	Cords		
4	Mixed Aspen	Pulpwood	6	Cords	20.8	\$22,060.70
	<i>B. T. Aspen</i>		6	<i>Cords</i>		
	Mixed Hardwood		1	Cords		
	<i>Red Maple</i>		1	<i>Cords</i>		
	Red Pine		237	Cords		
5	Mixed Aspen	Pulpwood	6	Cords	19.9	\$21,138.20
	<i>B. T. Aspen</i>		6	<i>Cords</i>		
	Mixed Hardwood		1	Cords		
	<i>Red Maple</i>		1	<i>Cords</i>		
	Red Pine		227	Cords		
6	Jack Pine	Pulpwood	1	Cords	16.9	\$16,826.10
	Mixed Aspen		5	Cords		
	<i>B. T. Aspen</i>		4	<i>Cords</i>		
	<i>Quaking Aspen</i>		1	<i>Cords</i>		
	Mixed Hardwood		2	Cords		
	<i>Red Maple</i>		2	<i>Cords</i>		
	Red Pine		180	Cords		
7	Mixed Aspen	Pulpwood	7	Cords	25.9	\$27,348.85
	<i>B. T. Aspen</i>		7	<i>Cords</i>		
	Mixed Hardwood		1	Cords		
	<i>Red Maple</i>		1	<i>Cords</i>		
	Red Pine		294	Cords		
8	Jack Pine	Pulpwood	2	Cords	24.4	\$21,626.70
	Mixed Aspen		4	Cords		
	<i>B. T. Aspen</i>		2	<i>Cords</i>		
	<i>Quaking Aspen</i>		2	<i>Cords</i>		
	Mixed Hardwood		7	Cords		
	<i>Red Maple</i>		5	<i>Cords</i>		
	<i>Sugar Maple</i>		2	<i>Cords</i>		
	Red Pine		231	Cords		
9	Red Maple	Sawtimber	11.9	MBF	10.7	\$3,761.65
	Sugar Maple		3.4	MBF		
	Balsam Fir	Pulpwood	3	Cords		
	Mixed Aspen		4	Cords		
	<i>B. T. Aspen</i>		3	<i>Cords</i>		
	<i>Quaking Aspen</i>		1	<i>Cords</i>		
	Mixed Hardwood		89	Cords		
	<i>American Elm</i>		1	<i>Cords</i>		
	<i>Beech</i>		4	<i>Cords</i>		
	<i>Black Cherry</i>		1	<i>Cords</i>		
	<i>Red Maple</i>		55	<i>Cords</i>		
	<i>Sugar Maple</i>		28	<i>Cords</i>		
10	Red Maple	Sawtimber	19.6	MBF	17.6	\$6,214.40
	Sugar Maple		5.7	MBF		
	Balsam Fir	Pulpwood	4	Cords		
	Mixed Aspen		7	Cords		

PU	MARKET GROUP	PRODUCT	QUANTITY	UNIT	ACRES	ADVERTISE PRICE				
10 con't	<i>B. T. Aspen</i>	<i>Pulpwood</i>	5	<i>Cords</i>						
	<i>Quaking Aspen</i>		2	<i>Cords</i>						
	Mixed Hardwood		146	Cords						
	<i>American Elm</i>		2	<i>Cords</i>						
	<i>Beech</i>		7	<i>Cords</i>						
	<i>Black Cherry</i>		2	<i>Cords</i>						
	<i>Red Maple</i>		90	<i>Cords</i>						
	<i>Sugar Maple</i>		45	<i>Cords</i>						
	11		Black Cherry	Sawtimber			1.2	MBF	17.5	\$9,116.30
Red Maple		Pulpwood	22.9	MBF						
Sugar Maple			11.4	MBF						
Yellow Birch			3.8	MBF						
Balsam Fir			8	Cords						
Mixed Hardwood			156	Cords						
<i>Beech</i>			2	<i>Cords</i>						
<i>Black Cherry</i>			1	<i>Cords</i>						
<i>Red Maple</i>			89	<i>Cords</i>						
<i>Sugar Maple</i>			58	<i>Cords</i>						
<i>Yellow Birch</i>			6	<i>Cords</i>						
Red Pine			4	Cords						
White Pine			19	Cords						
12			Mixed Aspen	Pulpwood	1	Cords	1.3	\$111.30		
			<i>Quaking Aspen</i>		1	<i>Cords</i>				
	Mixed Hardwood	3	Cords							
	<i>Black Cherry</i>	1	<i>Cords</i>							
	<i>Red Maple</i>	2	<i>Cords</i>							
	Paper Birch	1	Cords							
	White Pine	1	Cords							
	13	Paper Birch	Sawtimber		2.8	MBF			7.5	\$10,896.35
Red Maple		Pulpwood	3.4	MBF						
Mixed Aspen			210	Cords						
<i>B. T. Aspen</i>			124	<i>Cords</i>						
<i>Quaking Aspen</i>			86	<i>Cords</i>						
Mixed Hardwood			89	Cords						
<i>Red Maple</i>			89	<i>Cords</i>						
Paper Birch			19	Cords						
Red Pine			15	Cords						
White Pine			57	Cords						
14	Mixed Aspen	Pulpwood	50	Cords	3.8	\$1,872.40				
	<i>B. T. Aspen</i>		30	<i>Cords</i>						
	<i>Quaking Aspen</i>		20	<i>Cords</i>						
	Mixed Hardwood		10	Cords						
	<i>Red Maple</i>		10	<i>Cords</i>						
	White Pine		11	Cords						
	15		Red Maple	Sawtimber			0.8	MBF	35.6	\$19,737.30
Balsam Fir		Pulpwood	34	Cords						
Jack Pine			5	Cords						
Mixed Aspen			315	Cords						
<i>B. T. Aspen</i>			249	<i>Cords</i>						
<i>Quaking Aspen</i>			66	<i>Cords</i>						
Mixed Hardwood			64	Cords						
<i>Beech</i>			1	<i>Cords</i>						
<i>Red Maple</i>			63	<i>Cords</i>						
Paper Birch			17	Cords						
Red Pine			47	Cords						
White Pine			226	Cords						

**DESCRIPTION OF TIMBER BY PAYMENT UNIT (PU), CON'T**

PU	MARKET GROUP	PRODUCT	QUANTITY	UNIT	ACRES	ADVERTISE PRICE
16	Mixed Aspen <i>Quaking Aspen</i> Red Pine White Pine	Pulpwood	39 39 35 4	Cords <i>Cords</i> Cords Cords	4.0	\$4,466.45
17	Mixed Aspen <i>B. T. Aspen</i> <i>Quaking Aspen</i> Mixed Hardwood <i>Red Maple</i> Paper Birch Red Pine White Pine	Pulpwood	49 41 8 19 19 7 42 82	Cords <i>Cords</i> <i>Cords</i> Cords <i>Cords</i> Cords Cords Cords	9.2	\$7,215.80
18	Jack Pine Mixed Aspen <i>Quaking Aspen</i> Mixed Hardwood <i>Red Maple</i> Red Pine White Pine	Pulpwood	27 3 3 7 7 106 14	Cords Cords <i>Cords</i> Cords <i>Cords</i> Cords Cords	9.5	\$11,203.65
19	Red Maple Balsam Fir Black Spruce Mixed Aspen <i>B. T. Aspen</i> Mixed Hardwood <i>Red Maple</i> Paper Birch Red Pine White Pine	Sawtimber Pulpwood	3.1 2 84 7 7 43 43 2 3 102	MBF Cords Cords Cords <i>Cords</i> Cords <i>Cords</i> Cords Cords Cords	8.6	\$4,104.90
20	Balsam Fir Black Spruce Mixed Aspen <i>B. T. Aspen</i> Mixed Hardwood <i>Red Maple</i> Red Pine White Pine	Pulpwood	2 1 17 17 1 1 13 2	Cords Cords Cords <i>Cords</i> Cords <i>Cords</i> Cords Cords	0.9	\$1,791.70
TOTAL:			90.0	MBF		
TOTAL:			3,943	Cords		

## Sale Specific Conditions & Requirements

**Sale Name: Blue Skies Red Pine Mix**

**Sale Number: 41-011-24 Seq#: 1**

### 1 - Sale Area

#### 1.2 - Boundaries

##### 1.2.1 - Painted Boundaries (9/19)

The sale boundary and Payment Unit boundaries are marked and identified by blue, red and yellow paint. Exterior sale boundary lines against private property are marked with blue paint. Exterior sale boundary lines against state are marked with red paint. Interior Payment Unit boundaries are marked with yellow paint. The painted boundary line trees are not Included Timber and are to be protected unless marked with orange paint. In Payment Units 1-12 and 15-20, yellow painted Payment Unit boundary trees are not to be cut unless marked with orange paint. In Payment Units 13 and 14, yellow painted trees are to be cut, but only after both units have been paid for. In addition to the Payment Unit boundaries, Payment Units 9-11 have green painted regeneration gap boundaries within the Payment Units. These green painted boundary trees are Included Timber and designated for cutting.

### 2 - Timber Specifications

#### 2.1 - Included Timber

##### 2.1.1 - Clearcut Unit(s) with Unmerchantable Trees (6/14)

Within Payment Unit(s) 13, 14, and 20, cut all maple, aspen and birch trees that are two (2) inches or more at DBH. Cut all other trees except hemlock and oak trees that are four (4) inches or more at DBH. In addition, within Payment Unit 13 do not cut trees marked with green paint above and below stump height. Within Payment Unit 12 cut all species that are two (2) inches or more at DBH except do not cut hemlock or oak.

##### 2.1.3 - Cut Tree Marked Unit(s) (12/08)

Within Payment Unit(s) 1-11, and 15-18, all trees are designated for cutting when marked with orange paint above and below stump height, regardless of merchantability. In addition, within Payment Unit 15, cut all merchantable maple, aspen, jack pine, and balsam fir except for trees marked with green paint above and below the stump height. In addition, within Payment Unit 16, cut all merchantable aspen. In addition, within Payment Units 9-11, all trees within regeneration gaps are designated for cutting including the green marked trees identifying the regeneration gaps, this includes all trees greater than 1 (one) inch at DBH. Regeneration gaps are marked by green paint above and below the stump height.

##### 2.1.7 - Leave Tree Marked Unit(s) (6/14)

Within Payment Unit(s) 19, all trees, which meet minimum piece specifications in 2.2 Utilization, are designated for cutting except do not cut hemlock, oak, cedar, and trees marked with green paint above and below stump height. Special protection trees identified in accordance with condition 3.4.2, within clearcutting unit boundaries, are not Included Timber and are to be protected.

#### 2.2 - Utilization

##### 2.2.3 - Stump heights (4/07)

Stump heights within Payment Units 1-8, and 15-18, shall not exceed 12 inches for trees greater than 10 inches DBH and four (4) inches for trees smaller than 10 inches DBH. This is in order to facilitate future planting operations.

##### 2.2.3 - Stump Heights (12/24)

Stump heights within shall not exceed

### 3 - Payments

#### 3.3 - Pre-measured Sales

##### 3.3.4 - Dividing Payment Units (7/14)

Payment Unit(s) with a value greater than \$20,000 may be divided at the request of the Purchaser and upon approval of the Unit Manager. Dividing Payment Units is a contract modification which requires a Timber Sale Contract Amendment.

### 4 - Transportation

## 4.1 - Construction

### 4.1.3 - Slash and Earthen Piles (8/04)

Piles or windrows of earth along roads and landings that have been widened or constructed shall be leveled. Slash from road maintenance or construction, including stumps, shall be dispersed throughout the sale.

### 4.1.4 - Timber Removed for Construction (3/23)

Trees cut or damaged in the process of pre-approved road, landing, or skid trail construction will be decked in an area separate from other Designated Timber and not removed until measured by the Sale Administrator. Payment will be made at contract prices or average prices, if not on the contract.

### 4.1.6 - Road Construction (4/24)

Construction of new roads or improvements of existing roads shall be done in such a way as to minimize the environmental and visual impacts. Merchantable trees shall be cut and utilized unless otherwise directed. Non-merchantable trees shall be severed and laid flat on the ground. Slash shall be scattered, and not left in windrows and kept a minimum of 10 feet back from the road edge. Stumps shall be set upright, not left on edge, and be moved at least 10 feet away from the road edge. Disturbed soil shall be feathered into the woods and not left in berms or windrows.

### 4.1.7 - Road Closure (10/11)

All new roads built into the sale must be blocked to vehicle traffic upon completion of the sale. Overgrown roads that are reopened shall be considered new roads. In general, this will require constructing a four (4') foot high berm of stumps and logs covered with earth. These roads must be rendered impassable to cars and trucks. Contact the Sale Administrator for specific details of design and placement.

### 4.1.8 - Road Work (1) (8/07)

The following road work is required: 300 cubic yards of breaker run gravel (3-inch minus) must be purchased, hauled, and spread between the Sale Area and M-94. The exact locations will be determined at the pre-sale meeting. Unless approved by the Unit Manager, all road work must be done before hauling can commence.

## 4.2 - Maintenance

### 4.2.4 - Grading (10/16)

For completion of the sale, state forest roads must be graded. In general, this will require a road grader or bulldozer to shape up the roads after forest products have been hauled off site. This includes cleaning of drainage areas, grading, crowning and filling with gravel, if necessary. The grading equipment to be used must be approved by the Unit Manager or his/her representative.

## 5 - Operations

### 5.2 - Conduct of Operations

#### 5.2.2 - Hazard Trees/Snags

##### 5.2.2.1 - Den Trees (10/16)

Obvious hollow and/or den trees shall be protected and left standing unless they are a safety hazard.

#### 5.2.3 - Operating Restrictions

##### 5.2.3.3 - Bark Slippage Restriction (3/09)

Within Payment Unit(s) 9-11, unless changed by written agreement, cutting and skidding are not permitted during the period of April 15 to July 15. This restriction is because of bark slippage.

##### 5.2.3.6 - Bark Beetle Restriction (12/08)

In the event drought creates a high risk of pine bark beetle infestation, pine is not to be cut during the period March 1 through July 1, unless all portions of trees greater than two inches in diameter are removed from the sale area, reduced to chips, or treated to the satisfaction of the Unit Manager or his/her representative, within fifteen days of being severed from the stump. Pine log decks, pulpwood piles and treetops that are piled for chipping in the fall or winter within a 1/4 mile of susceptible sites must be removed before March 15. Residual slash must not be placed in piles or rows and must be spread over the site for quick drying. The Department of Natural Resources will exercise this specification if the risk of damage warrants.

#### 5.2.3.6 - Bark Beetle Restriction (1/25)

In the event drought creates a high risk of pine bark beetle infestation, pine is not to be cut during the period March 1 through July 1, unless all portions of trees greater than two (2) inches in diameter are removed from the Sale Area, reduced to chips, or treated to the satisfaction of the Unit Manager or his/her representative, within 15 days of being severed from the stump. Pine log decks, pulpwood piles and treetops that are piled for chipping in the fall or winter within a 1/4 mile of susceptible sites must be removed before March 15. Residual slash must not be placed in piles or rows and must be spread over the site for quick drying. The Department of Natural Resources will exercise this specification if the risk of damage warrants.

#### 5.2.32 - Decking/Landing Restoration (9/13)

All decking and landing areas must have the surface area restored to a condition equal to or better than before. This is to ensure the proper regeneration of the stand. Wood debris, chips and "cookies" from trimmings must be removed or scattered away from landing and loading areas and may not be windrowed on the edge.

#### 5.2.38 - No Decking Against Live Trees (2/04)

Cut products may not be decked against unmarked or designated leave trees.

#### 5.2.41 - Snowmobile Trail Protection (9/11)

Snowmobile Trail #2 is shown on the Timber Sale Map. Do not cut or damage posts with orange trail markers or traffic control signs. If the trail is used, it must be maintained and restored to a condition equal to or better than before the sale. If the trail road is to be used for hauling during the snowmobile season, then a snow-covered base must be left on the trail. Maintain a 20-foot-wide slash, debris, and rut free zone daily using the snowmobile trail as the centerline. No decking of forest products will be permitted along the snowmobile trail. All stumps within 20 feet of the snowmobile trail must be cut at ground level.

### 5.8 - Protection of Endangered Species

#### 5.8.3 - Red Shoulder Hawk or Goshawk (1) (2/16)

In the event that an active red shoulder hawk or goshawk nest is found, the contract may be amended to protect the nest site until the nest is determined to be inactive. The value of the trees in this excluded area will be refunded or credited to the Purchaser. The nest will be buffered with a five-chain radius (eight acre) protection area, centered on the nest tree, in which there will be no cutting or new roads constructed. Avoid human disturbance, including loading and skidding, in the protection area.

An additional zone of five chains (ten chains centered on the active nest tree) will be established in which there is no management activity from April 1 to July 30. Limit biomass harvesting and chipping operations within this ten-chain zone, retain the maximum one-third of residues per the Woody Biomass Harvesting Guidelines (Michigan DNR 2010). Nests determined to be inactive will be protected with a one-chain no-harvest buffer.

## 6 - Safety and Fire Prevention

### 6.2 - Signing

#### 6.2.2 - Snowmobile Trail Posting (10/20)

The Purchaser is responsible for posting and maintaining caution signs on snowmobile trail #2 prior to beginning operations during the snowmobile season (approximately December 1 to March 31). The trail must be posted approximately 350 feet from the sale area to warn of logging activity and truck traffic. Signs must be removed when harvest operations are suspended or completed. The Purchaser will provide these signs.



## TIMBER SALE MAP

This information provided by authority of Part 525, 1994 PA 451, as amended.

Township 42N	Range 15W / 16W	Section(s) and Subdivision(s)
		Sec. 1 NWNW; Sec. 4 SWNW/NWSW; Sec. 5 SWNW/SW/SE; Sec. 6 E1/2SE;

PU #	Acres	PU #	Acres	PU #	Acres	PU #	Acres
1	11.4	6	16.9	11	17.5	16	4
2	11	7	25.9	12	1.3	17	9.2
3	12.1	8	24.5	13	7.5	18	9.5
4	20.8	9	10.7	14	3.8	19	8.6
5	19.9	10	17.6	15	35.7	20	0.9

Use QR Code to open Map in App

N  
W  
E  
S

## Blue Skies Red Pine Mix

**268.7 Acres**

SCHÖLCRAFT

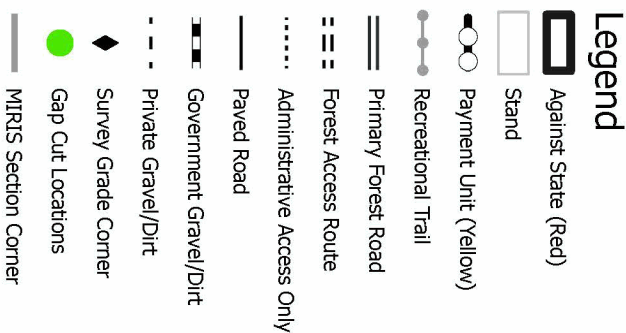
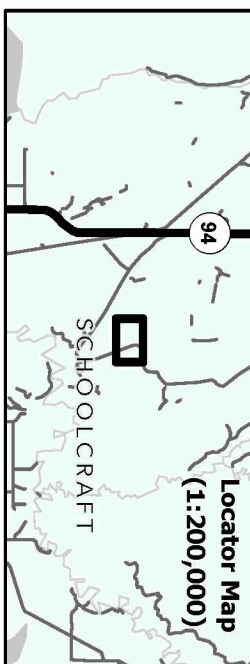
(1:200,000)

94



## Blue Skies Red Pine

**268.7 Acres**







TIMBER SALE MAP

This information provided by authority of Part 525, 1994 PA 451, as amended.

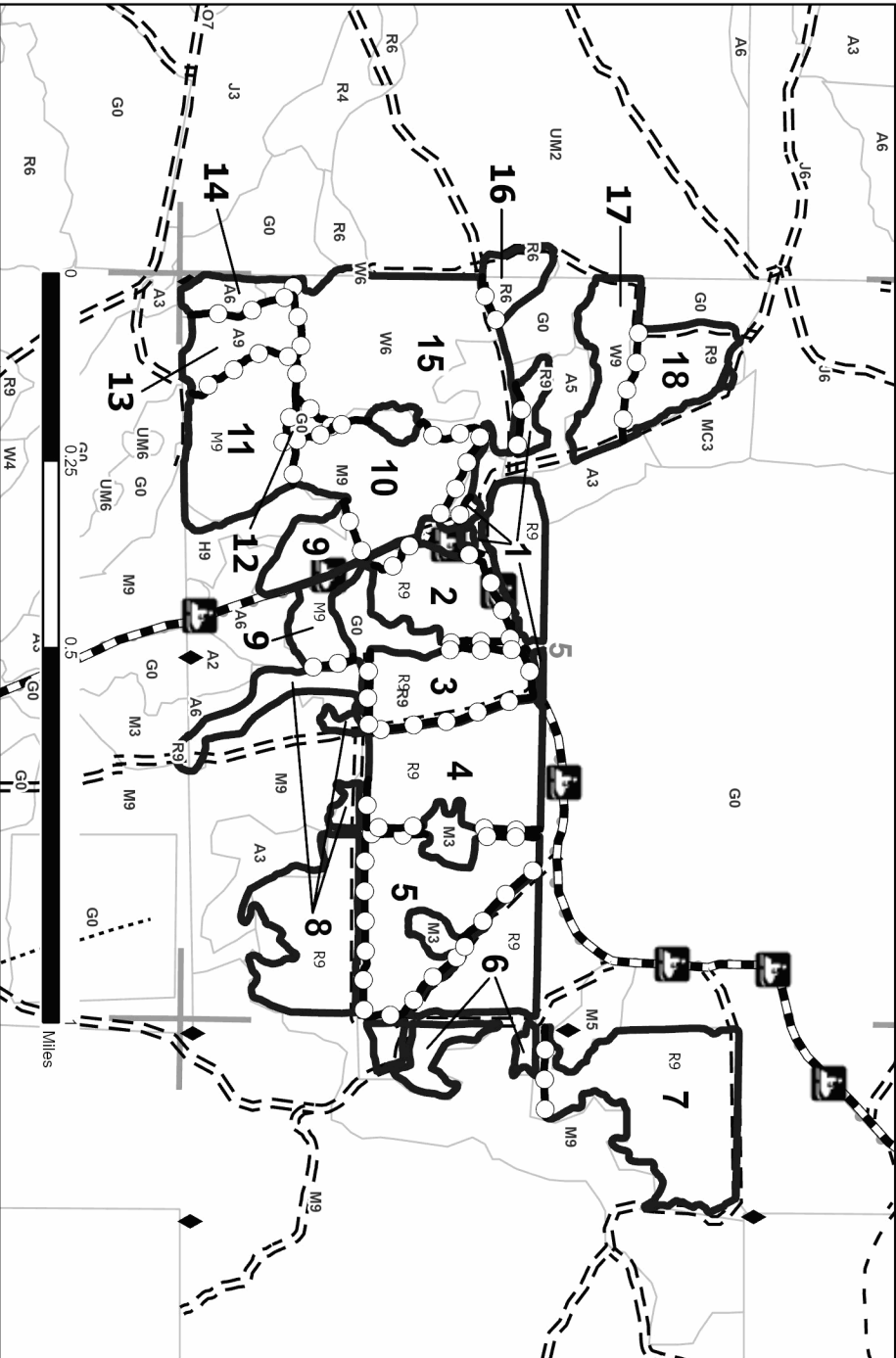
Forest Management Unit		County	Mapped By: Steve Tuovila		Sale Number		Date	
Shingleton Mgt Unit		Schoolcraft	Cruised By: Steve Tuovila		41-011-24		01/24/2025	
Township	Range	Section(s) and Subdivision(s)	Sec. 1 NWNW; Sec. 4 SWNW/NWSW; Sec. 5 SWNW/SWSE; Sec. 6 E1/2SE;		Scale	Page		Of
42N	15W / 16W				1:15,840	1		3

Cover Type	
A = Aspen	J = Jack Pine
B = Paper Birch	K = Rock
C = Cedar	L = Lowland Brush
D = Tread Bog	LM = Lowland Mix Forest
E = Swamp Hardwoods	M = Maple, Beech, Birch
F = Spruce/Fir	MC = Mixed Conifer
G = Grass	MD = Mixed Deciduous
H = Hemlock	N = Marsh
	O = Oak
	P = Lowland Poplar
	Q = Mixed Swamp Conifer
	R = Red Pine
	S = Black Spruce
	T = Tamarack
	U = Upland Brush
	UM = Upland Mix Forest
	V = Bog or Marsh
	W = White Pine
	X = Non Stocked
	Y = Sand
	Z = Water

Blue Skies Red Pine Mix  
268.7 Acres

Density	
0 = Non Stocked	5 = Pole Timber Medium
1 = Seedling Sapling Poor	6 = Pole Timber Well
2 = Seedling Sapling Medium	7 = Saw Timber Poor
3 = Seedling Sapling Well	8 = Saw Timber Medium
4 = Pole Timber Poor	9 = Saw Timber Well

PU #	Acres	PU #	Acres	PU #	Acres	PU #	Acres
1	11.4	6	16.9	11	17.5	16	4
2	11	7	25.9	12	1.3	17	9.2
3	12.1	8	24.5	13	7.5	18	9.5
4	20.8	9	10.7	14	3.8	19	8.6
5	19.9	10	17.6	15	35.7	20	0.9



Use QR Code to open Map in App

Legend

- Against State (Red)
- Stand
- Payment Unit (Yellow)
- Recreational Trail
- Primary Forest Road
- Forest Access Route
- Administrative Access Only
- Paved Road
- Government Gravel/Dirt
- Private Gravel/Dirt
- Survey Grade Corner
- MRTS Section Corner



TIMBER SALE MAP

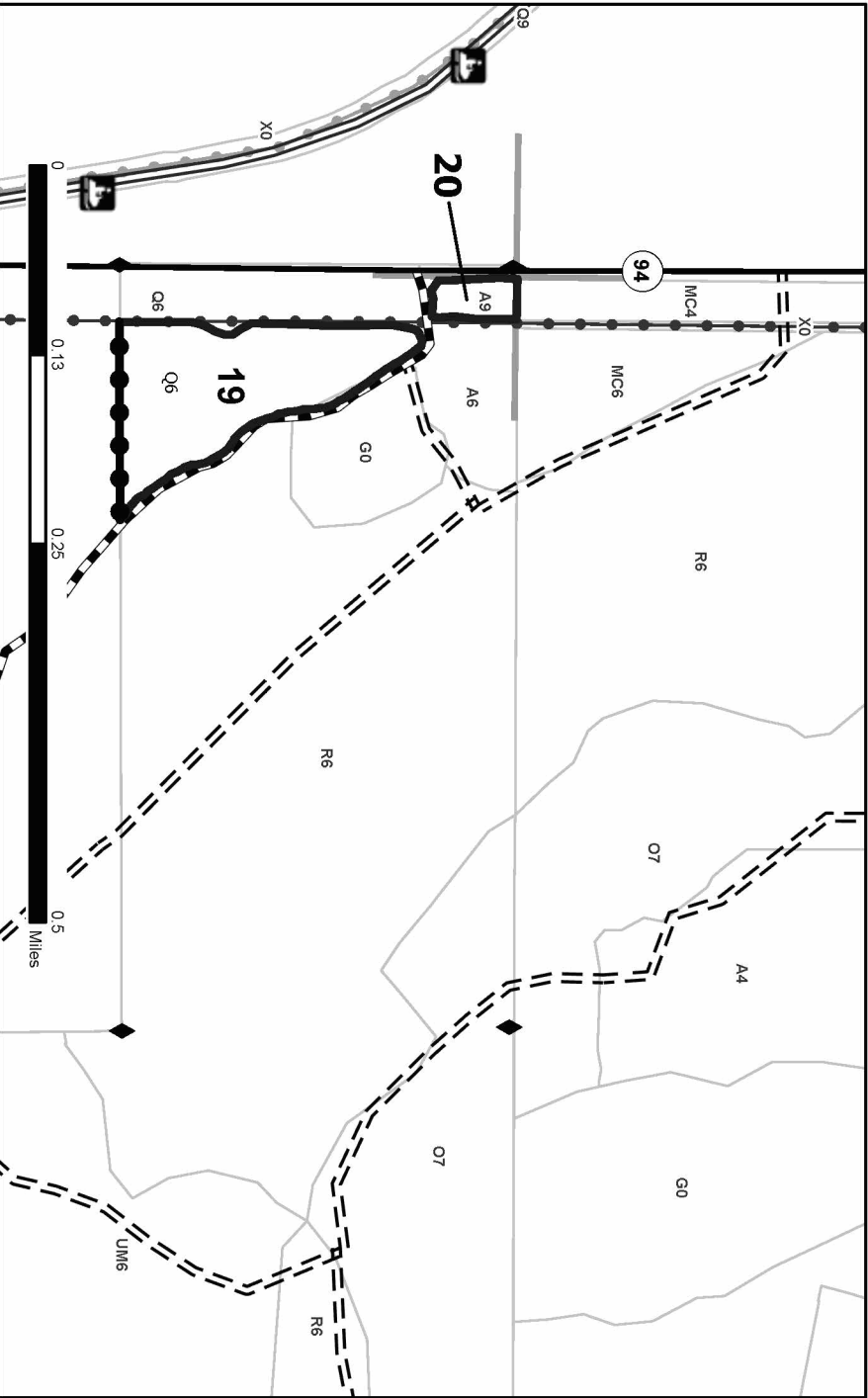
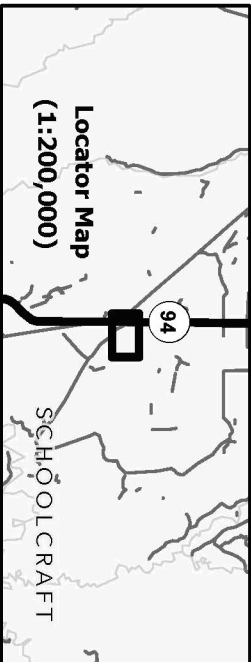
This information provided by authority of Part 525, 1994 PA 451, as amended.

Forest Management Unit		County	Mapped By: Steve Tuovila		Cruised By: Steve Tuovila		Sale Number	Date	
Shingleton Mgt Unit		Schoolcraft					41-011-24	08/29/2024	
Township	Range	Section(s) and Subdivision(s)	Sec. 1 NWNW; Sec. 4 SWNW/NWSW; Sec. 5 SWNW/SWSE; Sec. 6 E1/2SE;		Scale		Page		Of
42N	15W / 16W				1:7,920		2		3

Cover Type		Density	
A = Aspen	J = Jack Pine	0 = Non Stocked	5 = Pole Timber Medium
B = Paper Birch	K = Rock	1 = Seeding Sapling Poor	6 = Pole Timber Well
C = Cedar	L = Lowland Brush	2 = Seeding Sapling Medium	7 = Saw Timber Poor
D = Tread Bog	LM = Lowland Mix Forest	3 = Seeding Sapling Well	8 = Saw Timber Medium
E = Swamp Hardwoods	M = Maple, Beech, Birch	4 = Pole Timber Poor	9 = Saw Timber Well
F = Spruce/Fir	MC = Mixed Conifer		
G = Grass	MD = Mixed Deciduous		
H = Hemlock	N = Marsh		
	O = Oak		
	P = Upland Brush		
	Q = Lowland Poplar		
	R = Mixed Swamp Conifer		
	S = Red Pine		
	T = Black Spruce		
	U = Water		
	V = Bog or Marsh		
	W = White Pine		
	X = Non Stocked		
	Y = Sand		
	Z = Water		

PU #	Acres	PU #	Acres	PU #	Acres	PU #	Acres
1	11.4	6	16.9	11	17.5	16	4
2	11	7	25.9	12	1.3	17	9.2
3	12.1	8	24.5	13	7.5	18	9.5
4	20.8	9	10.7	14	3.8	19	8.6
5	19.9	10	17.6	15	35.7	20	0.9

Blue Skies Red Pine  
Mix  
268.7 Acres



Legend

- Against State (Red)
- Stand
- Private Line (Blue)
- Recreational Trail
- Highway
- Powerline
- Primary Forest Road
- Forest Access Route
- Administrative Access Only
- Paved Road
- Government Gravel/Dirt
- Private Gravel/Dirt
- Survey Grade Corner
- MIRIS Section Corner

Use QR Code to open Map in App



## TIMBER SALE INFORMATION

### Bandit Pine (41-016-24)

T48N, R15W, SEC. 17; T48N, R15W, SEC. 5; T48N, R15W, SEC. 6; T48N, R15W, SEC. 8.  
Alger County (Advertised Price \$305,423.20)

SALE NOTE: Road work is required on this sale. See Sale Spec 4.1.8 for details.

The County must be contacted prior to crossing or harvesting in the County Road R-O-W. This applies to H-58.

The Fox River Pathway is a hiking trail and is shown on the Timber Sale Map. See Sale Spec 5.2.40 for restrictions.

H-58 is a snowmobile trail and is shown on the Timber Sale Map. See Sale Spec 5.2.41 for additional information.

A recreation site such as a trail, pathway, or campground is within the sale area or the vicinity. Certain restrictions/specifications may be applicable including time restrictions.

A timber sale contract for this lump sum, sealed bid timber sale will be awarded to the responsible bidder offering the highest sealed bid price. All units of volume listed below were estimated using the Inventory Manager computer program and the new Michigan taper model. Bids must be at or above the following advertised price for each product and species:

<u>PRODUCTS &amp; SPECIES</u>	<u>ESTIMATED UNITS*</u>	<u>ADVERTISED PRICE</u>
Pulpwood		
Balsam Fir	20 Cords	\$ 11.00 / Cord
Jack Pine	1,574 Cords	\$ 35.50 / Cord
Mixed Aspen	16 Cords	\$ 29.90 / Cord
Mixed Hardwood	280 Cords	\$ 18.05 / Cord
Red Pine	2,524 Cords	\$ 92.25 / Cord
White Pine	612 Cords	\$ 17.90 / Cord

\* The total volume is statistically estimated within plus (+) or minus (-) 8.49 percent. There are an estimated 5,027 cords on this timber sale, plus or minus 427 cords at the 95% confidence level. The estimated units are final and not subject to adjustment. Prospective bidders are urged to examine this timber and to make their own estimates of quantity and quality.

### **BOND AND PAYMENT SCHEDULE:**

1. A bond in the amount of \$15,271.00 to insure faithful performance of the conditions of the contract will be deposited by the successful bidder within 21 days of the sale award.
2. Cutting in any sale or unit without the required advance payment would be considered a trespass.
3. Total payment must be paid in advance or according to the following schedule:
  - (a) Ten percent (10%) of the sale value must be paid within 21 days of the sale award.
  - (b) The 10% down payment will be credited towards the first unit cut.
  - (c) Payment for each of the following units must be made before cutting begins in that unit:

<u>PAYMENT UNIT NUMBER</u>	<u>PERCENT OF TOTAL SALE VALUE</u>
01	2.5%
02	12.1%
03	8.4%
04	2.2%
05	2.3%
06	8.0%
07	1.0%
08	8.4%
09	8.7%
10	10.0%
11	10.7%
12	3.9%
13	11.7%
14	4.5%
15	5.6%

4. If no cutting takes place, the 10% down payment will not be refunded.
5. Operations on the contract issued will terminate on 06/30/2028.

### **SALE STATISTICS**

Volumes were calculated in cubic feet using the Michigan taper model. Cubic foot volume includes all wood inside bark for the product indicated. For display purposes, cubic feet were converted to cords and MBF using a simple conversion factor, e.g. 79 cubic feet per cord and 185 cubic feet per MBF. The cubic foot volumes are precise; the cords and MBF volumes are not. Cubic foot volume cannot be directly converted to cords or boards with precision.

## SALE VOLUMES

The total estimated sale volume may not equal the sum of the species/products due to the nature of statistical calculations associated with double sampling methodology.

VOLUME			STATISTICAL RANGE IN CORDS	
TOTAL CUBIC FEET	TOTAL CORDS	PERCENT ERROR	MINIMUM	MAXIMUM
397,170	5,027	8.49%	4,601	5,454

## VDU VOLUMES

A VDU is a Volume Determination Unit. Volumes and their associated statistics are calculated at the VDU level and summarized to the sale level. There is often a one to one relationship between a VDU and a Payment Unit, but not always, depending on the cruise design. Refer to the VDU TO PAYMENT UNIT table.

	VOLUME			RANGE IN CORDS	
VDU	TOTAL CUBIC FEET	TOTAL CORDS	PERCENT ERROR	MINIMUM	MAXIMUM
1	226,921	2,872	13.07%	2,497	3,248
2	140,305	1,776	10.23%	1,594	1,958
3	29,945	379	27.20%	276	482
<b>TOTAL:</b>	<b>397,170</b>	<b>5,027</b>		<b>4,367</b>	<b>5,688</b>

## VDU TO PAYMENT UNIT

When a VDU is associated with more than one Payment Unit (PU), the VDU volumes are assigned to the PU based on acres of the VDU within the PU.

VDU	VDU ACRES	PU	PU ACRES
1	256.2	1	8.2
1	256.2	2	39.4
1	256.2	3	27.8
1	256.2	5	7.6
1	256.2	6	26.5
1	256.2	7	3.4
1	256.2	8	27.6
1	256.2	9	28.8
1	256.2	10	32.9
1	256.2	11	35.4
1	256.2	15	18.6
2	65.9	12	12.9
2	65.9	13	38.4
2	65.9	14	14.6
3	19.8	4	19.8
<b>TOTAL:</b>	<b>3,035.7</b>		<b>341.9</b>

**DESCRIPTION OF TIMBER BY PAYMENT UNIT (PU)**

PU	MARKET GROUP	PRODUCT	QUANTITY	UNIT	ACRES	ADVERTISE PRICE
1	Red Pine White Pine	Pulpwood	80 11	Cords Cords	8.2	\$7,576.90
2	Jack Pine Mixed Hardwood <i>Red Maple</i> Red Pine White Pine	Pulpwood	1 2 2 384 55	Cords Cords Cords Cords Cords	39.4	\$36,480.10
3	Jack Pine Mixed Hardwood <i>Red Maple</i> Red Pine White Pine	Pulpwood	1 1 1 271 39	Cords Cords Cords Cords Cords	27.8	\$25,751.40
4	Balsam Fir Mixed Aspen <i>Quaking Aspen</i> Mixed Hardwood <i>Red Maple</i> White Pine	Pulpwood	20 11 11 269 269 80	Cords Cords Cords Cords Cords Cords	19.8	\$6,836.35
5	Red Pine White Pine	Pulpwood	74 11	Cords Cords	7.6	\$7,023.40
6	Jack Pine Mixed Hardwood <i>Red Maple</i> Red Pine White Pine	Pulpwood	1 1 1 258 37	Cords Cords Cords Cords Cords	26.5	\$24,516.35
7	Red Pine White Pine	Pulpwood	33 5	Cords Cords	3.4	\$3,133.75
8	Jack Pine Mixed Hardwood <i>Red Maple</i> Red Pine White Pine	Pulpwood	1 1 1 269 38	Cords Cords Cords Cords Cords	27.6	\$25,549.00
9	Jack Pine Mixed Hardwood <i>Red Maple</i> Red Pine White Pine	Pulpwood	1 1 1 281 40	Cords Cords Cords Cords Cords	28.8	\$26,691.80
10	Jack Pine Mixed Hardwood <i>Red Maple</i> Red Pine White Pine	Pulpwood	1 2 2 321 46	Cords Cords Cords Cords Cords	32.9	\$30,507.25
11	Jack Pine Mixed Hardwood <i>Red Maple</i> Red Pine White Pine	Pulpwood	1 2 2 345 49	Cords Cords Cords Cords Cords	35.4	\$32,774.95
12	Jack Pine Mixed Aspen <i>Quaking Aspen</i> Red Pine White Pine	Pulpwood	307 1 1 5 34	Cords Cords Cords Cords Cords	12.9	\$11,998.25
13	Jack Pine Mixed Aspen <i>Quaking Aspen</i>	Pulpwood	912 3 3	Cords Cords Cords	38.4	\$35,767.50

DESCRIPTION OF TIMBER BY PAYMENT UNIT (PU), CON'T

PU	MARKET GROUP	PRODUCT	QUANTITY	UNIT	ACRES	ADVERTISE PRICE
13 con't	Red Pine	Pulpwood	16	Cords		
	White Pine		102	Cords		
14	Jack Pine	Pulpwood	347	Cords	14.6	\$13,600.00
	Mixed Aspen		1	Cords		
	<i>Quaking Aspen</i>		1	<i>Cords</i>		
	Red Pine		6	Cords		
	White Pine		39	Cords		
15	Jack Pine	Pulpwood	1	Cords	18.6	\$17,216.20
	Mixed Hardwood		1	Cords		
	<i>Red Maple</i>		1	<i>Cords</i>		
	Red Pine		181	Cords		
	White Pine		26	Cords		
TOTAL:			5,026	Cords		

## **Sale Specific Conditions & Requirements**

**Sale Name: Bandit Pine**

**Sale Number: 41-016-24 Seq#: 1**

### **1 - Sale Area**

#### **1.2 - Boundaries**

##### **1.2.1 - Painted Boundaries (9/19)**

The sale boundary and Payment Unit boundaries are marked and identified by blue, red and yellow paint. Exterior sale boundary lines against private property are marked with blue paint. Exterior sale boundary lines against state are marked with red paint. Interior Payment Unit boundaries are marked with yellow paint. The painted boundary line trees are not Included Timber and are to be protected unless marked with orange paint. Yellow painted trees designating an interior Payment Unit boundary are only to be cut when all surrounding Payment Units have been paid.

### **2 - Timber Specifications**

#### **2.1 - Included Timber**

##### **2.1.1 - Clearcut Unit(s) with Unmerchantable Trees (6/14)**

Within Payment Unit(s) 12-14, cut all trees that are two (2) inches or more at DBH, except do not cut oak or hemlock.

##### **2.1.2 - Clearcut Unit(s) w/o Unmerchantable Trees (8/11)**

Within Payment Unit(s) 4, cut all trees which meet minimum piece specifications in 2.2 Utilization, except do not cut oak or hemlock.

##### **2.1.3 - Cut Tree Marked Unit(s) (12/08)**

Within Payment Unit(s) 1-3, 5-11 and 15, all trees are designated for cutting when marked with orange paint above and below stump height, regardless of merchantability.

#### **2.2 - Utilization**

##### **2.2.3 - Stump heights (4/07)**

Stump heights within the Sale Area, except Payment Unit 4, shall not exceed 12 inches for trees greater than 10 inches DBH and 4 inches for trees smaller than 10 inches DBH. This is in order to facilitate regeneration operations.

### **3 - Payments**

#### **3.3 - Pre-measured Sales**

##### **3.3.4 - Dividing Payment Units (7/14)**

Payment Unit(s) that are greater than \$15,000 in value may be divided at the request of the Purchaser and upon approval of the Unit Manager. Dividing Payment Units is a contract modification which requires a Timber Sale Contract Amendment.

### **4 - Transportation**

#### **4.1 - Construction**

##### **4.1.3 - Slash and Earthen Piles (8/04)**

Piles or windrows of earth along roads and landings that have been widened or constructed shall be leveled. Slash from road maintenance or construction, including stumps, shall be chipped or dispersed throughout the sale.

##### **4.1.4 - Timber Removed for Construction (3/23)**

Trees cut or damaged in the process of pre-approved road, landing, or skid trail construction will be decked in an area separate from other Designated Timber and not removed until measured by the Sale Administrator. Payment will be made at contract prices or average prices, if not on the contract.

##### **4.1.6 - Road Construction (4/24)**

Construction of new roads or improvements of existing roads shall be done in such a way as to minimize the environmental and visual impacts. Merchantable trees shall be cut and utilized unless otherwise directed. Non-merchantable trees shall be severed and laid flat on the ground. Slash shall be scattered, and not left in windrows and kept a minimum of 10 feet back from the road edge. Stumps shall be set upright, not left on edge, and be moved at least 10 feet away from the road edge.

Disturbed soil shall be feathered into the woods and not left in berms or windrows.

#### 4.1.7 - Road Closure (10/11)

All new roads built into the sale must be blocked to vehicle traffic upon completion of the sale. Overgrown roads that are reopened shall be considered new roads. In general, this will require constructing a four (4') foot high berm of stumps and logs covered with earth. Stumps and brush must be placed along the remainder of the trail. These roads must be rendered impassable to cars and trucks. Contact the Sale Administrator for specific details of design and placement.

#### 4.1.8 - Road Work (1) (8/07)

The following road work is required: 300 cubic yards of breaker run gravel must be purchased, hauled and spread between H-58 and Sale Area. All work is at the Purchaser's expense and no deductions will be given. Exact locations will be determined at the Pre-Sale meeting. All work must be completed before trucking can begin.

#### 4.1.10 - Oversight (12/08)

The Unit Manager, or his/her representative, must be present when the road improvement project is initiated.

### 4.2 - Maintenance

#### 4.2.4 - Grading (10/16)

For completion of the sale, state forest roads must be graded. In general, this will require a road grader or bulldozer to shape up the roads after forest products have been hauled off site. This includes cleaning of drainage areas, grading, crowning and filling with gravel, if necessary. The grading equipment to be used must be approved by the Unit Manager or his/her representative.

### 4.3 - Public Right-of-Way

#### 4.3.2 - County R-O-W (12/06)

The County must be contacted prior to crossing or harvesting in the County Road R-O-W. This applies to H-58.

## 5 - Operations

### 5.2 - Conduct of Operations

#### 5.2.1 - Slash

##### 5.2.1.11 - Slash for Reforestation (3/21)

To facilitate reforestation, Payment Units 12-14, shall be left with slash evenly distributed. Bunched tops within the cutting area shall be broken up and scattered. Stumps shall be cut low to the ground. Processing sites shall not be left with a compacted layer of slash; tops from these sites shall be hauled back into the cut area and scattered.

#### 5.2.2 - Hazard Trees/Snags

##### 5.2.2.1 - Den Trees (10/16)

Obvious hollow and/or den trees shall be protected and left standing unless they are a safety hazard.

#### 5.2.3 - Operating Restrictions

##### 5.2.3.6 - Bark Beetle Restriction (12/08)

In the event drought creates a high risk of pine bark beetle infestation, pine is not to be cut during the period March 1 through July 1, unless all portions of trees greater than two inches in diameter are removed from the sale area, reduced to chips, or treated to the satisfaction of the Unit Manager or his/her representative, within fifteen days of being severed from the stump. Pine log decks, pulpwood piles and treetops that are piled for chipping in the fall or winter within a 1/4 mile of susceptible sites must be removed before March 15. Residual slash must not be placed in piles or rows and must be spread over the site for quick drying. The Department of Natural Resources will exercise this specification if the risk of damage warrants.

#### 5.2.4 - Dead and Down Creation

##### 5.2.4.1 - Dead and Down Creation, Marked Trees (10/13)

Within or adjacent to Payment Units 2, 3, 6 and 7, all trees marked in purple paint with an "X" must be cut, felled and/or pushed into Kingston Lake. These trees are located along the Red Boundary line adjacent to Kingston Lake. Contact Sale Administrator for more specific details of operation.



#### 5.2.32 - Decking/Landing Restoration (9/13)

All decking and landing areas must have the surface area restored to a condition equal to or better than before. This is to ensure the proper regeneration of the stand. Wood debris, chips and "cookies" from trimmings must be removed or scattered away from landing and loading areas and may not be windrowed on the edge.

#### 5.2.40 - Pathway Protection (10/10)

The Fox River Pathway is a hiking trail and is shown on the Timber Sale Map. Do not cut trees or damage posts with blue pathway markers. Maintain a 20-foot-wide slash, debris, and rut free zone daily, using the pathway as the centerline. Do not run equipment down the pathway.

#### 5.2.41 - Snowmobile Trail Protection (9/11)

H-58 is a snowmobile trail and is shown on the Timber Sale Map. Do not cut or damage posts with orange trail markers or traffic control signs. Do not cut or damage posts with orange trail markers or traffic control signs. The snowmobile trail may not be used for any timber sale operations from December 1 to March 31.

### 5.7 - Protection of Historical Sites

#### 5.7.1 - Historical Sites (7/12)

The Purchaser shall not cut live or dead trees or operate equipment within historical sites. Historical sites are marked with an "H" on the Timber Sale Map. This area is outside of the red boundary line of Payment Unit 3. The Purchaser shall protect historical sites from damage by the Purchaser's operations. If Purchaser's operations have cut or damaged historical sites through carelessness, the Purchaser shall pay \$1000 as fixed, agreed and liquidated damages for each acre or part thereof cut or damaged.

### 5.8 - Protection of Endangered Species

#### 5.8.3 - Red Shoulder Hawk or Goshawk (1) (2/16)

In the event that an active red shoulder hawk or goshawk nest is found, the contract may be amended to protect the nest site until the nest is determined to be inactive. The value of the trees in this excluded area will be refunded or credited to the Purchaser. The nest will be buffered with a five-chain radius (eight acre) protection area, centered on the nest tree, in which there will be no cutting or new roads constructed. Avoid human disturbance, including loading and skidding, in the protection area.

An additional zone of five chains (ten chains centered on the active nest tree) will be established in which there is no management activity from April 1 to July 30. Limit biomass harvesting and chipping operations within this ten-chain zone, retain the maximum one-third of residues per the Woody Biomass Harvesting Guidelines (Michigan DNR 2010). Nests determined to be inactive will be protected with a one-chain no-harvest buffer.

## 6 - Safety and Fire Prevention

### 6.2 - Signing

#### 6.2.1 - Road Posting (10/20)

The Purchaser is responsible for posting and maintaining caution signs on H-58 prior to beginning operations. The road must be posted at appropriate distances from the Sale Area to warn of logging activity and truck traffic. Signs must be removed when harvest operations are suspended or completed. The Purchaser will provide these signs.

#### 6.2.3 - Recreational Trail Posting (10/20)

The Purchaser is responsible for posting and maintaining caution signs on Fox River Pathway prior to beginning operations. The trail must be posted at appropriate distances from the Sale Area to warn of logging activity and truck traffic at both ends of the trail. Signs must be removed when harvest operations are suspended or completed. The Purchaser will provide these signs.

## 7 - Other Conditions

### 7.3 - Contract Modifications

#### 7.3.3 - Modification for Reforestation (8/05)

When contractual work of Purchaser has been accepted for any Payment Unit identified on Sale Area Map, Payment Unit will be eliminated from the Sale Area on written notice so that reforestation operations can begin.



**TIMBER SALE MAP**

This information provided by authority of Part 525, 1994 PA 451, as amended.

Sale Number

**41-016-24**

Date

**09/25/2024**

Forest Management Unit

County

Mapped By: S. Kentner

Scale

Page

Of

Shingleton Mgt Unit

Alger

Cruised By: S. Kentner

**1:15,840****2****2**Township  
48NRange  
15W

Section(s) and

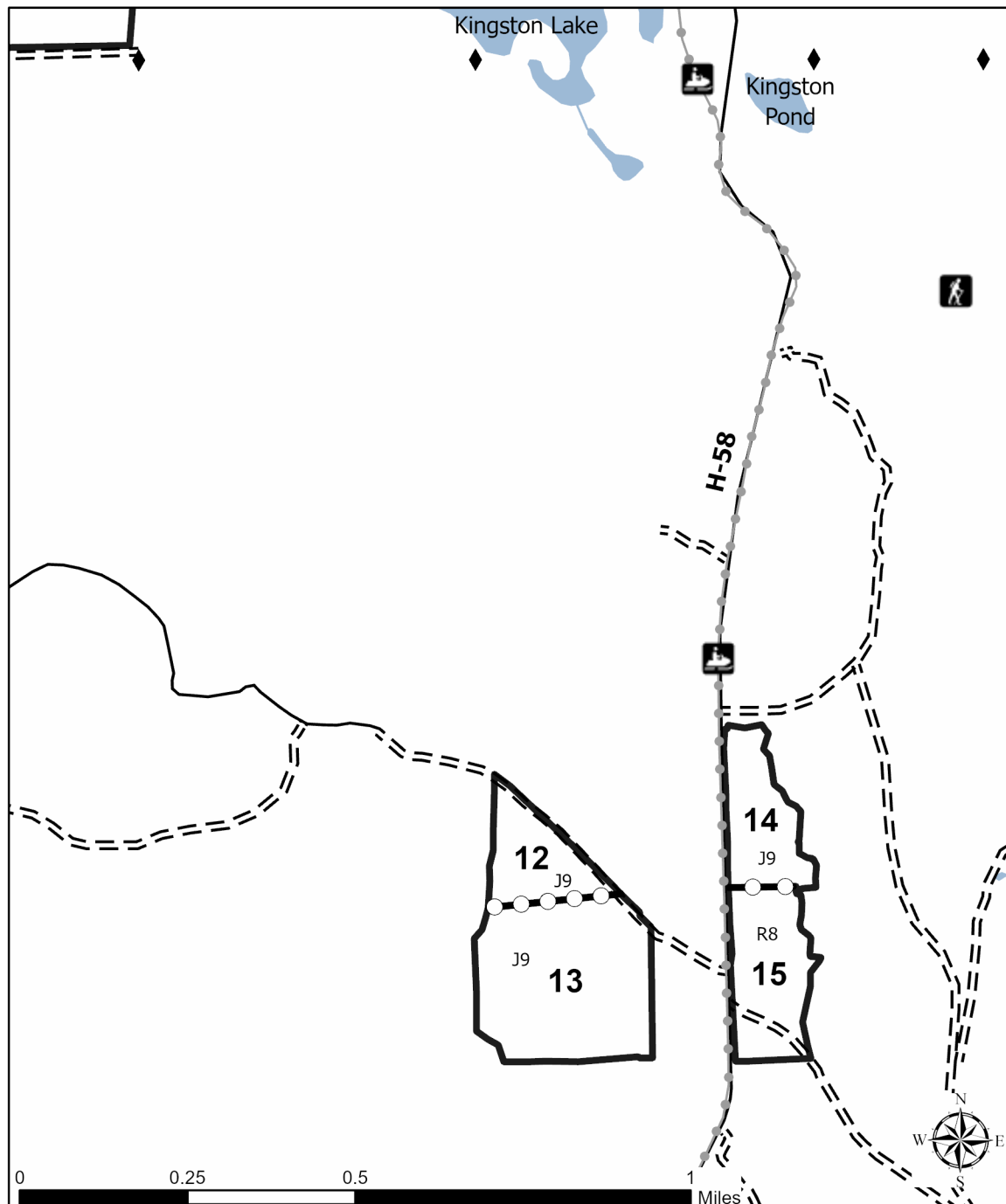
Subdivision(s) Sec. 17 NW,W1/2NE; Sec. 5 NWNW; Sec. 6 NW,NE,SW,NWSE; Sec. 8 SESW;

**Cover Type**

A = Aspen	J = Jack Pine	O = Oak	U = Upland Brush
B = Paper Birch	K = Rock	P = Lowland Poplar	UM = Upland Mix Forest
C = Cedar	L = Lowland Brush	Q = Mixed Swamp Conifer	V = Bog or Marsh
D = Treed Bog	LM = Lowland Mix Forest	R = Red Pine	W = White Pine
E = Swamp Hardwoods	M = Maple, Beech, Birch	S = Black Spruce	X = Non Stocked
F = Spruce/Fir	MC = Mixed Conifer	T = Tamarack	Y = Sand
G = Grass	MD = Mixed Deciduous	Z = Water	
H = Hemlock	N = Marsh		

**Density**

0 = Non Stocked	5 = Pole Timber Medium
1 = Seedling Sapling Poor	6 = Pole Timber Well
2 = Seedling Sapling Medium	7 = Saw Timber Poor
3 = Seedling Sapling Well	8 = Saw Timber Medium
4 = Pole Timber Poor	9 = Saw Timber Well

**Bandit Pine 341.9 Acres****Legend**

- Payment Unit
- Payment Unit (Yellow)
- Recreational Trail
- Primary Forest Road
- Forest Access Route
- Administrative Access Only
- Paved Road
- Government Gravel/Dirt
- Private Gravel/Dirt
- Survey Grade Corner

**PU # Acres**

1	8.2
2	39.4
3	27.8
4	19.8
5	7.6
6	26.5
7	3.4
8	27.6
9	28.8
10	32.9
11	35.4
12	12.9
13	38.4
14	14.6
15	18.6

**TIMBER SALE MAP**

This information provided by authority of Part 525, 1994 PA 451, as amended.

Forest Management Unit		County	Mapped By: S. Kentner	Sale Number	Date
Shingleton Mgt Unit		Alger	Cruised By: S. Kentner	41-016-24	01/22/2025
Township	Range	Section(s) and Subdivision(s)			
48N	15W	Sec. 17 NW,W1/2NE; Sec. 5 NWNW; Sec. 6 NW,NE,SW,NWSE; Sec. 8 SESW;			
			Scale	Page	Of
			1:15,840	1	2

**Cover Type**

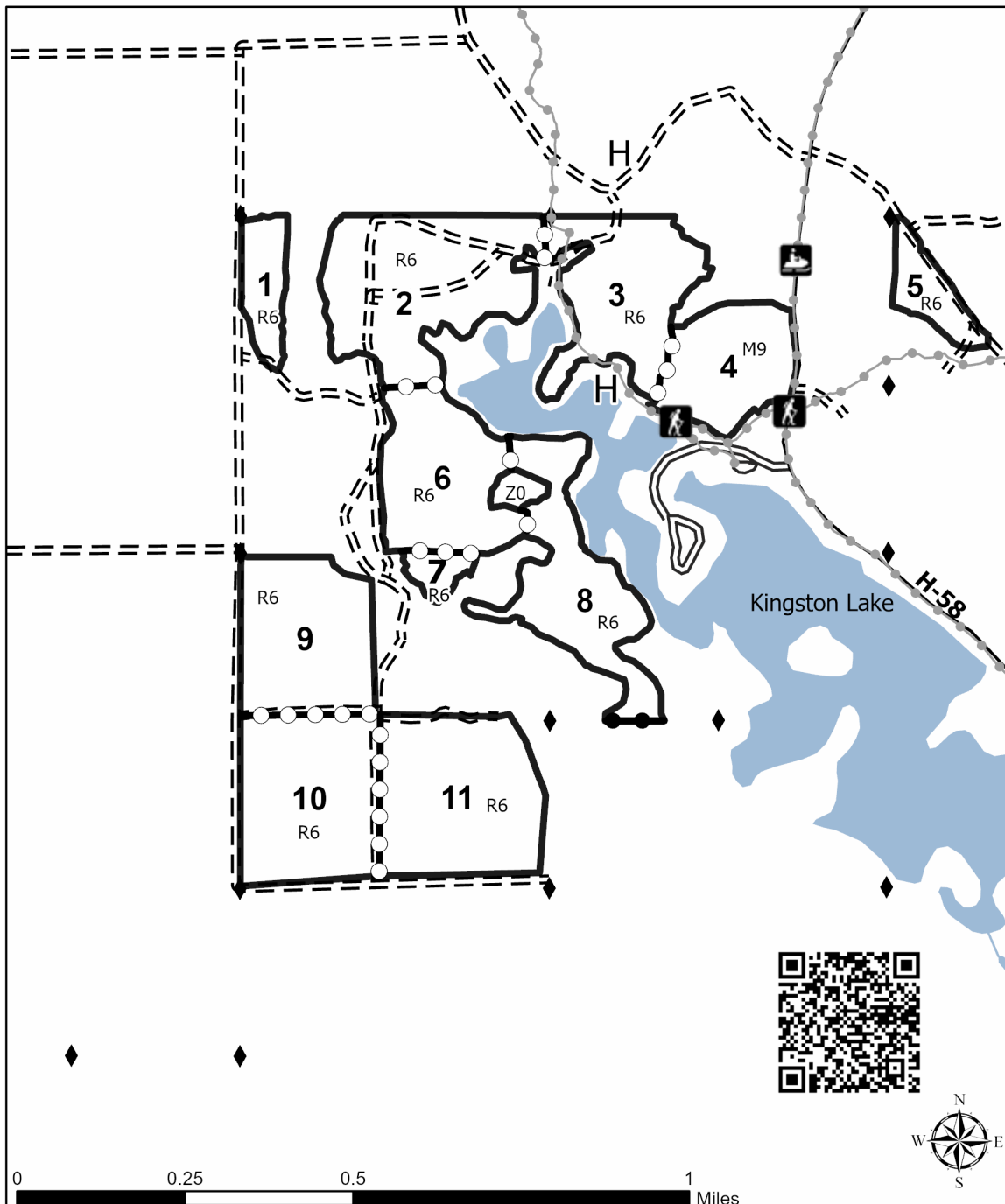
A = Aspen	J = Jack Pine	O = Oak	U = Upland Brush
B = Paper Birch	K = Rock	P = Lowland Poplar	UM = Upland Mix Forest
C = Cedar	L = Lowland Brush	Q = Mixed Swamp Conifer	V = Bog or Marsh
D = Treed Bog	LM = Lowland Mix Forest	R = Red Pine	W = White Pine
E = Swamp Hardwoods	M = Maple, Beech, Birch	S = Black Spruce	X = Non Stocked
F = Spruce/Fir	MC = Mixed Conifer	T = Tamarack	Y = Sand
G = Grass	MD = Mixed Deciduous	Z = Water	
H = Hemlock	N = Marsh		

**Density**

0 = Non Stocked	5 = Pole Timber Medium
1 = Seedling Sapling Poor	6 = Pole Timber Well
2 = Seedling Sapling Medium	7 = Saw Timber Poor
3 = Seedling Sapling Well	8 = Saw Timber Medium
4 = Pole Timber Poor	9 = Saw Timber Well

**Bandit Pine 341.9 Acres****Legend**

- Payment Unit
- Payment Unit (Yellow)
- Private Line (Blue)
- Recreational Trail
- Primary Forest Road
- Forest Access Route
- Administrative Access Only
- Paved Road
- Government Gravel/Dirt
- Private Gravel/Dirt
- Survey Grade Corner
- Historic Site



PU #	Acres
1	8.2
2	39.4
3	27.8
4	19.8
5	7.6
6	26.5
7	3.4
8	27.6
9	28.8
10	32.9
11	35.4
12	12.9
13	38.4
14	14.6
15	18.6

Bingo Hardwoods (41-010-24)  
T47N, R17W, SEC. 28; T47N, R17W, SEC. 33; Alger COUNTY

In response to the notice of sale to be held 2:00 p.m. (local time) on April 9, 2025, I am hereby submitting my sealed bid (firm offer) for the following forest products to be cut. Bids for individual species must be at or above the advertised price. All non-responsive bid forms may be rejected.

<u>PRODUCTS &amp; SPECIES</u>	<u>ESTIMATED VOLUME*</u>	<u>ADVERTISED PRICE</u>	<u>BID PRICE/UNIT</u>
<b>Sawtimber</b>			
Basswood	11.8 MBF	\$ 76.00/MBF	\$ _____
Black Cherry	5.0 MBF	\$ 82.00/MBF	\$ _____
Sugar Maple	114.0 MBF	\$ 274.00/MBF	\$ _____
<b>Pulpwood</b>			
Balsam Fir	35 Cords	\$ 11.00/Cord	\$ _____
Mixed Hardwood	1,307 Cords	\$ 18.05/Cord	\$ _____
Quaking Aspen	36 Cords	\$ 29.90/Cord	\$ _____
White Pine	3 Cords	\$ 17.90/Cord	\$ _____
White Spruce	19 Cords	\$ 8.30/Cord	\$ _____

\*The volumes are statistically estimated within plus (+) or minus (-) 11.98 percent at 95% confidence level. These estimated volumes are final and not subject to adjustment. Prospective bidders are urged to examine this timber and to make their own estimates of quantity and quality.

I understand that any or all bids may be rejected. All bids must be signed and all bid items must be bid or the bid form may be rejected. I also understand that consideration and awarding a contract will be based upon my past performance and ability to complete the contract based upon equipment and staffing subject to my control.

FEDERAL ID: \_\_\_\_ - \_\_\_\_ - \_\_\_\_ or SOCIAL SECURITY NUMBER: \_\_\_\_ - \_\_\_\_ - \_\_\_\_  
 Company or individual bidding: \_\_\_\_\_  
 Company representative's name: \_\_\_\_\_  
 Address: \_\_\_\_\_  
 City: \_\_\_\_\_ State: \_\_\_\_\_ Zip: \_\_\_\_\_

IF AVAILABLE, PLEASE PLACE THE PERSONALIZED LABEL FROM YOUR PROSPECTUS IN THE ABOVE BOX.

Individual or company representative's signature: \_\_\_\_\_ Date: \_\_\_\_\_

Phone number : \_\_\_\_\_ Email (optional): \_\_\_\_\_

**THE WINNING BIDDER MUST COMPLETE THE VERIFICATION OF WORKER'S DISABILITY COMPENSATION ACT  
COMPLIANCE (ON REVERSE SIDE IF DOUBLE SIDED) WITHIN 21 DAYS OF SALE AWARD DATE**



## TIMBER SALE VERIFICATION OF WORKER'S DISABILITY COMPENSATION ACT COMPLIANCE

As required by Act 317, P.A. 1969 (Worker's Compensation) and  
Part 5 of Act 451 of 1994, as amended.

### FOR DEPARTMENT USE ONLY

Sale Number (XX - XXX - XX - XX)

Forest Management Unit:

### VERIFICATION OF WORKER'S DISABILITY COMPENSATION ACT COMPLIANCE

- This verification must be completed and submitted within 21 days of contract award and prior to the issuance of the timber sale contract.
- In addition, if boxes 2B or 2C are checked, then Notice of Exclusion or Certificate of Insurance must be submitted within twenty-one (21) days of the contract award and prior to the issuance of the timber sale contract.
- All Information must be typed or printed except for written signatures.

Please Check Appropriate Categories:

1. My business is organized as (you **must** check one of the boxes below):
  - A. ☐ Sole Proprietorship (individual)
  - B. ☐ Partnership
  - C. ☐ Corporation
2. You **must** check one of the boxes below:
  - A. ☐ I certify my business is a sole proprietorship and it has no employees but the sole proprietor. I am not subject to the Worker's Compensation Laws.
  - B. ☐ I certify my business has satisfied its obligation to the Worker's Compensation Act through the use of an approved Notice of Exclusion (BWC-337, Rev. 5/96). I will provide a copy of the Notice of Exclusion within 21 days of the contract award. (For questions or a copy of the BWC-337, please call the Worker's Compensation Bureau at 517-322-1195).
  - C. ☐ I certify my business has a Worker's Compensation Policy. I will provide an original Certificate of Insurance within twenty-one (21) days of the contract award.
3. If you have checked item 2(A) or 2(B), you **must** indicate the number of **both** full-time and part-time employees, other than yourself, including family members and active partners (if none, you must enter "0").

\_\_\_\_\_ Full-time Employees

\_\_\_\_\_ Part-time Employees

Name of Business		Federal ID (or) Social Security No.
Address		Telephone (       )
City	State	ZIP

*I hereby certify that the above information is true and correct. I agree to notify the Michigan DNR of any changes that occur in factors affecting my coverage during any of my present and future operations.*

\_\_\_\_\_  
Signature of Owner or Authorized Representative

\_\_\_\_\_  
Title

\_\_\_\_\_  
Date

Please complete the "SEALED BID" information on the next page

Blue Skies Red Pine Mix (41-011-24)

T42N, R15W, SEC. 4; T42N, R15W, SEC. 5; T42N, R15W, SEC. 6; T42N, R16W,

In response to the notice of sale to be held 2:00 p.m. (local time) on April 9, 2025, I am hereby submitting my sealed bid (firm offer) for the following forest products to be cut. Bids for individual species must be at or above the advertised price. All non-responsive bid forms may be rejected.

<u>PRODUCTS &amp; SPECIES</u>	<u>ESTIMATED VOLUME*</u>	<u>ADVERTISED PRICE</u>	<u>BID PRICE/UNIT</u>
Sawtimber			
Black Cherry	1.2 MBF	\$ 82.00/MBF	\$ _____
Paper Birch	2.8 MBF	\$ 44.00/MBF	\$ _____
Red Maple	61.7 MBF	\$ 90.00/MBF	\$ _____
Sugar Maple	20.5 MBF	\$ 274.00/MBF	\$ _____
Yellow Birch	3.8 MBF	\$ 58.00/MBF	\$ _____
Pulpwood			
Balsam Fir	53 Cords	\$ 11.00/Cord	\$ _____
Black Spruce	85 Cords	\$ 8.30/Cord	\$ _____
Jack Pine	35 Cords	\$ 35.50/Cord	\$ _____
Mixed Aspen	739 Cords	\$ 29.90/Cord	\$ _____
Mixed Hardwood	639 Cords	\$ 18.05/Cord	\$ _____
Paper Birch	46 Cords	\$ 9.35/Cord	\$ _____
Red Pine	1,828 Cords	\$ 92.25/Cord	\$ _____
White Pine	518 Cords	\$ 17.90/Cord	\$ _____

\*The volumes are statistically estimated within plus (+) or minus (-) 10.23 percent at 95% confidence level. These estimated volumes are final and not subject to adjustment. Prospective bidders are urged to examine this timber and to make their own estimates of quantity and quality.

I understand that any or all bids may be rejected. All bids must be signed and all bid items must be bid or the bid form may be rejected. I also understand that consideration and awarding a contract will be based upon my past performance and ability to complete the contract based upon equipment and staffing subject to my control.

FEDERAL ID: \_\_\_\_ - \_\_\_\_ - \_\_\_\_ or SOCIAL SECURITY NUMBER: \_\_\_\_ - \_\_\_\_ - \_\_\_\_

Company or individual bidding: \_\_\_\_\_

Company representative's name: \_\_\_\_\_

Address: \_\_\_\_\_

City: \_\_\_\_\_ State: \_\_\_\_\_ Zip: \_\_\_\_\_

IF AVAILABLE, PLEASE PLACE THE PERSONALIZED LABEL FROM YOUR PROSPECTUS IN THE ABOVE BOX.

Individual or company representative's signature: \_\_\_\_\_ Date: \_\_\_\_\_

Phone number : \_\_\_\_\_ Email (optional): \_\_\_\_\_

**THE WINNING BIDDER MUST COMPLETE THE VERIFICATION OF WORKER'S DISABILITY COMPENSATION ACT  
COMPLIANCE (ON REVERSE SIDE IF DOUBLE SIDED) WITHIN 21 DAYS OF SALE AWARD DATE**



**TIMBER SALE**  
**VERIFICATION OF WORKER'S DISABILITY**  
**COMPENSATION ACT COMPLIANCE**

*As required by Act 317, P.A. 1969 (Worker's Compensation) and  
Part 5 of Act 451 of 1994, as amended.*

**FOR DEPARTMENT USE ONLY**

Sale Number (XX – XXX – XX – XX)

Forest Management Unit:

**VERIFICATION OF WORKER'S DISABILITY COMPENSATION ACT COMPLIANCE**

- This verification must be completed and submitted within 21 days of contract award and prior to the issuance of the timber sale contract.
- In addition, if boxes 2B or 2C are checked, then Notice of Exclusion or Certificate of Insurance must be submitted within twenty-one (21) days of the contract award and prior to the issuance of the timber sale contract.
- All Information must be typed or printed except for written signatures.

Please Check Appropriate Categories:

1. My business is organized as (you **must** check one of the boxes below):
  - A. ☐ Sole Proprietorship (individual)
  - B. ☐ Partnership
  - C. ☐ Corporation
2. You **must** check one of the boxes below:
  - A. ☐ I certify my business is a sole proprietorship and it has no employees but the sole proprietor. I am not subject to the Worker's Compensation Laws.
  - B. ☐ I certify my business has satisfied its obligation to the Worker's Compensation Act through the use of an approved Notice of Exclusion (BWC-337, Rev. 5/96). I will provide a copy of the Notice of Exclusion within 21 days of the contract award. (For questions or a copy of the BWC-337, please call the Worker's Compensation Bureau at 517-322-1195).
  - C. ☐ I certify my business has a Worker's Compensation Policy. I will provide an original Certificate of Insurance within twenty-one (21) days of the contract award.
3. If you have checked item 2(A) or 2(B), you **must** indicate the number of **both** full-time and part-time employees, other than yourself, including family members and active partners (if none, you must enter "0").

\_\_\_\_\_ Full-time Employees

\_\_\_\_\_ Part-time Employees

Name of Business		Federal ID (or) Social Security No.
Address		Telephone (       )
City	State	ZIP

*I hereby certify that the above information is true and correct. I agree to notify the Michigan DNR of any changes that occur in factors affecting my coverage during any of my present and future operations.*

\_\_\_\_\_  
Signature of Owner or Authorized Representative

\_\_\_\_\_  
Title

\_\_\_\_\_  
Date

**Please complete the "SEALED BID" information on the next page**



Bandit Pine (41-016-24)

T48N, R15W, SEC. 17; T48N, R15W, SEC. 5; T48N, R15W, SEC. 6; T48N, R15W,

In response to the notice of sale to be held 2:00 p.m. (local time) on April 9, 2025, I am hereby submitting my sealed bid (firm offer) for the following forest products to be cut. Bids for individual species must be at or above the advertised price. All non-responsive bid forms may be rejected.

<u>PRODUCTS &amp; SPECIES</u>	<u>ESTIMATED VOLUME*</u>	<u>ADVERTISED PRICE</u>	<u>BID PRICE/UNIT</u>
Pulpwood			
Balsam Fir	20 Cords	\$ 11.00/Cord	\$ _____
Jack Pine	1,574 Cords	\$ 35.50/Cord	\$ _____
Mixed Aspen	16 Cords	\$ 29.90/Cord	\$ _____
Mixed Hardwood	280 Cords	\$ 18.05/Cord	\$ _____
Red Pine	2,524 Cords	\$ 92.25/Cord	\$ _____
White Pine	612 Cords	\$ 17.90/Cord	\$ _____

\*The volumes are statistically estimated within plus (+) or minus (-) 8.49 percent at 95% confidence level. These estimated volumes are final and not subject to adjustment. Prospective bidders are urged to examine this timber and to make their own estimates of quantity and quality.

I understand that any or all bids may be rejected. All bids must be signed and all bid items must be bid or the bid form may be rejected. I also understand that consideration and awarding a contract will be based upon my past performance and ability to complete the contract based upon equipment and staffing subject to my control.

FEDERAL ID: \_\_\_\_ - \_\_\_\_ - \_\_\_\_ or SOCIAL SECURITY NUMBER: \_\_\_\_ - \_\_\_\_ - \_\_\_\_

Company or individual bidding: \_\_\_\_\_

Company representative's name: \_\_\_\_\_

Address: \_\_\_\_\_

City: \_\_\_\_\_ State: \_\_\_\_\_ Zip: \_\_\_\_\_

IF AVAILABLE, PLEASE PLACE THE PERSONALIZED LABEL FROM YOUR PROSPECTUS IN THE ABOVE BOX.

Individual or company representative's signature: \_\_\_\_\_ Date: \_\_\_\_\_

Phone number : \_\_\_\_\_ Email (optional): \_\_\_\_\_

**THE WINNING BIDDER MUST COMPLETE THE VERIFICATION OF WORKER'S DISABILITY COMPENSATION ACT  
COMPLIANCE (ON REVERSE SIDE IF DOUBLE SIDED) WITHIN 21 DAYS OF SALE AWARD DATE**



## TIMBER SALE VERIFICATION OF WORKER'S DISABILITY COMPENSATION ACT COMPLIANCE

As required by Act 317, P.A. 1969 (Worker's Compensation) and  
Part 5 of Act 451 of 1994, as amended.

### FOR DEPARTMENT USE ONLY

Sale Number (XX - XXX - XX - XX)

Forest Management Unit:

### VERIFICATION OF WORKER'S DISABILITY COMPENSATION ACT COMPLIANCE

- This verification must be completed and submitted within 21 days of contract award and prior to the issuance of the timber sale contract.
- In addition, if boxes 2B or 2C are checked, then Notice of Exclusion or Certificate of Insurance must be submitted within twenty-one (21) days of the contract award and prior to the issuance of the timber sale contract.
- All information must be typed or printed except for written signatures.

Please Check Appropriate Categories:

1. My business is organized as (you **must** check one of the boxes below):
  - A. ☐ Sole Proprietorship (individual)
  - B. ☐ Partnership
  - C. ☐ Corporation
2. You **must** check one of the boxes below:
  - A. ☐ I certify my business is a sole proprietorship and it has no employees but the sole proprietor. I am not subject to the Worker's Compensation Laws.
  - B. ☐ I certify my business has satisfied its obligation to the Worker's Compensation Act through the use of an approved Notice of Exclusion (BWC-337, Rev. 5/96). I will provide a copy of the Notice of Exclusion within 21 days of the contract award. (For questions or a copy of the BWC-337, please call the Worker's Compensation Bureau at 517-322-1195).
  - C. ☐ I certify my business has a Worker's Compensation Policy. I will provide an original Certificate of Insurance within twenty-one (21) days of the contract award.
3. If you have checked item 2(A) or 2(B), you **must** indicate the number of **both** full-time and part-time employees, other than yourself, including family members and active partners (if none, you must enter "0").

\_\_\_\_\_ Full-time Employees

\_\_\_\_\_ Part-time Employees

Name of Business		Federal ID (or) Social Security No.
Address		Telephone (       )
City	State	ZIP

*I hereby certify that the above information is true and correct. I agree to notify the Michigan DNR of any changes that occur in factors affecting my coverage during any of my present and future operations.*

\_\_\_\_\_  
Signature of Owner or Authorized Representative

\_\_\_\_\_  
Title

\_\_\_\_\_  
Date

Please complete the "SEALED BID" information on the next page