



**DEPARTMENT OF NATURAL RESOURCES
STATE OF MICHIGAN
TIMBER SALE PROSPECTUS #7804**

SCHEDULED SALE DATE AND TIME: 3:00 p.m. (local time) on April 29, 2026.

LOCATION: **BALDWIN OFFICE, 2468 W 24TH STREET, BALDWIN, MI 49304.**

PROSPECTUS NOTE: The bidder is advised to inspect the sale area and review the location, estimated volumes, operating costs and contract terms of proposed sales. Please be aware that some landowners may request 60 days or more notice for access across their land.

Notice is hereby given that bids will be received by the Unit Manager, CADILLAC MANAGEMENT UNIT, for certain timber on the following described lands:

Fool Hen Aspen (63-020-25) / T23N, R07W, SEC. 13, NWNW,S1/2NW,SENE,N1/2SW,SWSW.
T23N, R07W, SEC. 13, SE.
T23N, R07W, SEC. 14, SENE.

Missaukee County, Advertised Price \$121,441.75, 165.9 Acres, Aspen, Hardwood.

Jellycoat Pine (63-021-25) / T23N, R07W, SEC. 12, SE.
T23N, R07W, SEC. 13, NE,N1/2SE.

Missaukee County, Advertised Price \$67,899.90, 161.9 Acres, Red Pine, Hardwood.

Fire Trap Pine (63-054-25) / T21N, R05W, SEC. 25, NENW,N1/2NE,SWNE,SESW,N1/2SE.
T21N, R05W, SEC. 25, SWSE.
T21N, R05W, SEC. 26, SENW,NE,E1/2SW,SE.

Missaukee County, Advertised Price \$131,601.70, 342.0 Acres, Red Pine, Jack Pine.

SALE NOTE: Units 8-11 are Massasauga Rattlesnake habitat with appropriate sale condition protection.

A recreation site such as a trail, pathway, or campground is within the sale area or the vicinity. Certain restrictions/specifications may be applicable including time restrictions. Access may be through other public land.

Stratford Complex (63-020-24) / T24N, R05W, SEC. 6 , NENE,S1/2NE,N1/2SE.
T24N, R05W, SEC. 7 , E1/2NW,NE,SW,SE.
T24N, R06W, SEC. 12, SESE.

Missaukee County, Advertised Price \$151,091.65, 228.7 Acres, Aspen, Hardwood.

SALE NOTE: A recreation site such as a trail, pathway, or campground is within the sale area or the vicinity. Certain restrictions/specifications may be applicable including time restrictions.

BID INSTRUCTIONS (VER. 10/10/2022):

1. Scheduled Bid Location, Date, and Time (2/11)

Bids must be received by the Unit Manager, BALDWIN OFFICE, 2468 W 24th Street, Baldwin, MI 49304, no later than 3:00 p.m. (local time) on April 29, 2026. For further information concerning this sale, contact David Fisher at 231-878-0494 extension .

2. Bidder's Qualifications (10/22)

If all or part of a timber sale was prepared by a private contractor, the contractor and that contractor's company are not permitted to bid on the timber sale. A person must be 18 years of age or older to purchase timber. Permanent employees of the Department of Natural Resources or members of their immediate household may not bid. Former employees, in the permanent or seasonal class, may not bid until 3 months after the last day of active duty. Bids will not be accepted from individuals or companies appearing on the DNR/FRD No-Bid List. This list contains the names of purchasers who previously failed to execute a contract within 21-days or who have a history of poor performance.

3. Preparation of Sealed Bids (5/16)

Bid Forms may be completed online thru Michigan DNR Timber Sale Online Bidding (OLB) at www.michigan.gov/timberbidding or by completing the hardcopy Bid Form found in the Timber Sale Prospectus . Hardcopy Bid Forms shall be manually signed in ink. Registration in OLB is considered your 'signature' for all bids submitted thru that system. Bid prices must be entered for each species and product in the Bid Price column for all material subject to bidding and all fill-in blanks must be completed. If erasures or other changes appear on the hardcopy Bid Form, each erasure or change must be initialed by the person signing the bid.

4. Submission of Sealed Bids (5/16)

Bid forms may be obtained from the Unit Manager or thru OLB. Bids may be submitted hardcopy or thru OLB. All hardcopy bids must be submitted on the bid form and in an envelope clearly identified as described in this section. NOTE: Only one bid form per bid envelope. Sealed bids must be submitted to the Unit office designated in the prospectus and must be submitted at or prior to the time established in the prospectus. The envelope should show on the outside (a) the sale name or number and (b) the date and time of bid opening, as shown in the prospectus. Bids received after the time specified in the sale prospectus are late bids and will be rejected.

It is possible for a bidder to submit multiple bids on a single sale. For example, a bid may be submitted hardcopy and a bid may be submitted thru OLB. Or, two bidders from the same company could both submit bids on the same sale. If this were to happen, the State would accept all bids received and award the contract accordingly. All bidding and contractual requirements would apply to all bids received.

5. Public Opening of Sealed Bids (7/16)

If conditions permit, the sealed bids will be publicly opened and posted at the time and place set in the prospectus.

If a bidder, present at a bid opening, has submitted bids on more than one sale, that bidder may withdraw their unopened bid envelopes or announce the withdrawal of their online bid after being declared the successful bidder on one sale.

6. Award of Contract (1/11)

Award of the contract will be made to the Bidder whose bid, conforming to the prospectus, is most advantageous to the State of Michigan on the basis of total value at rates bid for the estimated quantities. The State reserves the right to reject any bid or waive any minor irregularity in bids received. A written award mailed (or otherwise furnished) to the successful Bidder shall be deemed to result in a binding contract without further action by either party.

7. Down Payment (1/11)

The Bidder to whom award is made must make a down payment within 21 days of the sale award. The amount of the down payment will be calculated as shown in the Bond and Payment Schedule of this prospectus. Only cash may be used to meet this requirement.

8. Performance Security (1/11)

As guarantee of faithful performance, a cash bond, certificate of deposit, surety bond or irrevocable letter of credit (LOC) is required within 21 days of the sale award. The amount of the performance security is shown in the Bond and

Payment Schedule of this prospectus. If an LOC or surety is used, the coverage must extend for at least 6 months beyond the contract expiration.

9. Worker's Compensation (10/22)

Purchaser shall obtain worker's compensation insurance to cover claims under Michigan's Worker's Disability Compensation Act of 1969 or similar employee benefit act of any other state applicable to an employee. Verification of Worker's Disability Compensation Act Compliance must be completed and submitted within 21 days of contract award and prior to the issuance of the timber sale contract. In addition, if applicable, Notice of Exclusion or Certificate of Insurance must also be submitted.

10. Timber Sale Contract (10/22)

Additional conditions and requirements common to all timber sales are listed on the timber sale contract (R4031) and are available on line at www.michigan.gov/timber. Contact the Unit Manager for additional information or a sample contract. Within 21 days of the date of the award letter, the bidder must sign the contract and provide the required down payment, performance security, and verification of worker's disability compensation. The down payment and performance security shall be in accordance with the provisions of the timber sale contract, in the sums stated in this prospectus. If these actions are not taken, then the Bidder, the Bidder's corporation, and the corporation's principals may not be permitted to bid on State timber sales for a period of 3 months after the first offense, 6 months after the second offense, and 1 year after the third offense. An offense will only be counted against the Bidder for 5 years. In addition, the Bidder certifies that if awarded this contract, the Bidder will complete the timber sale contract in accordance with its terms and any modifications thereof including requirements to purchase, cut, and remove the included timber by the expiration date.

Payment Unit values in the State Forest Timber Sale Contract are calculated based on the advertised value of the Payment Unit as a percentage of the total advertised value of the contract. The advertised value of each Payment Unit is given in the Description of Timber by Payment Unit table on the Timber Sale Information page. For example, if the value of Payment Unit 1 is advertised as \$1,500 and the total Timber Sale value is advertised as \$10,000, the contract price for Payment Unit 1 will be 15% of the total bid price ($\$1,500/\$10,000 * 100$).

11. Disclaimer of Estimates and Bidder's Warranty of Inspection (10/22)

Before submitting this bid, the Bidder is advised and cautioned to inspect the sale area, review the requirements of the sale contract, and take other steps as may be reasonably necessary to ascertain the location, estimated volumes, construction estimates, and operating costs of the proposed sale. Failure to do so will not relieve the Bidder from responsibility for completing the contract.

The Bidder warrants that this bid is submitted solely on the basis of the Bidder's examination and inspection of the quality and quantity of the timber offered for sale and the Bidder's opinion of the value thereof and the costs of recovery. No reliance should be placed on the State of Michigan's estimates of timber quality, quantity or costs of recovery. Bidder further acknowledges that the State of Michigan: (i) expressly disclaims any warranty of fitness of timber for any purpose; (ii) offers this timber as is without any warranty of quality (merchantability) or quantity and (iii) expressly disclaims any warranty as to the quantity or quality of timber sold.

12. Certification and Chain-of-Custody (10/22)

Unless otherwise indicated in the contract under section 7 – Other Conditions of the Sale Specific Conditions & Requirements, the area encompassed by this timber sale is certified to the standards of the Forest Stewardship Council (FSC) - Certificate #SCS-FM/COC-00090N and the Sustainable Forestry Initiative (SFI) - Certificate #NSF-SFIS-5Y031-SF5. Forest products from this sale may be delivered to the mill as "FSC 100% and / or SFI certified" as long as the contractor hauling the forest products is chain-of-custody (COC) certified or covered under a COC certificate from the destination mill. The purchaser is responsible for maintaining COC after leaving the sale area.

13. Good Neighbor Authority (GNA) Requirements (10/22)

If the name of this timber sales contains the acronym GNA, it is authorized by the Good Neighbor Authority (GNA) and covered by various agreements between the U.S. Forest Service and the State. The timber sale occurs on federal land and the following conditions apply:

GNA contracts on US Forest Service land will not be awarded to purchasers on the Federal list of excluded parties. The System for Award Management (SAM) will be checked for active excluded parties prior to award of contract. In

addition, the Bidder to whom award is made must complete an Assurance Regarding Felony Conviction or Tax Delinquent Status for Corporate Applicants (AD-3031).

14. Good Neighbor Authority (GNA) Requirements, con't (10/22)

Bidder certifies, by signing this bid form, that to the best of Bidder's knowledge that the following representations are accurate and complete.

- a. That the Bidder and its principals are not presently debarred, suspended, proposed for debarment, declared ineligible, or voluntary excluded from timber sales (covered transactions) by any Federal department or agency.
- b. That the Bidder and its principals have not within a 3-year period preceding this bid been convicted of or had a civil judgment rendered against them for commission of fraud or a criminal offense in connection with obtaining , attempting to obtain, or performing a public (Federal, State, or local) transaction or contract under a public transaction; violation of Federal or State antitrust statutes or commission of embezzlement, theft, forgery, bribery, falsification or destruction of records, making false statements, or receiving stolen property.
- c. That the Bidder and its principals are not presently indicted for or otherwise criminally or civilly charged by a governmental entity (Federal, State, or local) with commission of any of the offenses enumerated in paragraph b of this certification.
- d. That the Bidder and its principals have not within a 3-year period preceding this bid had one or more public transactions (Federal, State, or local) terminated for breach or default of a timber or forest product contract.

Bidders that cannot certify this requirement, in whole or in part, shall submit an explanation with their bid.

Scott Bowen
Director

TIMBER SALE INFORMATION

Fool Hen Aspen (63-020-25)

T23N, R07W, SEC. 13; T23N, R07W, SEC. 14.
Missaukee County (Advertised Price \$121,441.75)

A timber sale contract for this lump sum, sealed bid timber sale will be awarded to the responsible bidder offering the highest sealed bid price. All units of volume listed below were estimated using the Inventory Manager computer program and the new Michigan taper model. Bids must be at or above the following advertised price for each product and species:

<u>PRODUCTS & SPECIES</u>	<u>ESTIMATED UNITS*</u>		<u>ADVERTISED PRICE</u>
Sawtimber			
Black/Red (Hybrid) Oak	102.4	MBF	\$ 98.00 / MBF
Red Maple	79.8	MBF	\$ 136.00 / MBF
Red Oak	25.5	MBF	\$ 170.00 / MBF
Red Pine	135.6	MBF	\$ 108.00 / MBF
Sugar Maple	40.1	MBF	\$ 173.00 / MBF
White Pine	70.1	MBF	\$ 47.00 / MBF
Pulpwood			
Balsam Fir	214	Cords	\$ 34.20 / Cord
Basswood	42	Cords	\$ 10.00 / Cord
Black Cherry	86	Cords	\$ 14.60 / Cord
Jack Pine	208	Cords	\$ 13.75 / Cord
Mixed Aspen	1,583	Cords	\$ 18.50 / Cord
Mixed Hardwood	839	Cords	\$ 14.60 / Cord
Mixed Oak	387	Cords	\$ 27.20 / Cord
Red Pine	128	Cords	\$ 46.10 / Cord
Scotch Pine	1	Cords	\$ 21.85 / Cord
White Pine	84	Cords	\$ 17.90 / Cord

* The total volume is statistically estimated within plus (+) or minus (-) 13.11 percent. There are an estimated 5,027 cords on this timber sale, plus or minus 659 cords at the 95% confidence level. The estimated units are final and not subject to adjustment. Prospective bidders are urged to examine this timber and to make their own estimates of quantity and quality.

BOND AND PAYMENT SCHEDULE:

1. A bond in the amount of \$12,144.00 to insure faithful performance of the conditions of the contract will be deposited by the successful bidder within 21 days of the sale award.
2. Cutting in any sale or unit without the required advance payment would be considered a trespass.
3. Total payment must be paid in advance or according to the following schedule :
 - (a) Ten percent (10%) of the sale value must be paid within 21 days of the sale award.
 - (b) The 10% down payment will be credited towards the first unit cut.
 - (c) Payment for each of the following units must be made before cutting begins in that unit:

PAYMENT UNIT NUMBER	PERCENT OF TOTAL SALE VALUE
01	15.0%
02	32.7%
03	28.8%
04	2.5%
05	5.7%
06	15.3%
4. If no cutting takes place, the 10% down payment will not be refunded.
5. Operations on the contract issued will terminate on 06/30/2029.

SALE STATISTICS

Volumes were calculated in cubic feet using the Michigan taper model. Cubic foot volume includes all wood inside bark for the product indicated. For display purposes, cubic feet were converted to cords and MBF using a simple conversion factor, e.g. 79 cubic feet per cord and 185 cubic feet per MBF. The cubic foot volumes are precise; the cords and MBF volumes are not. Cubic foot volume cannot be directly converted to cords or boards with precision.

SALE VOLUMES

The total estimated sale volume may not equal the sum of the species/products due to the nature of statistical calculations associated with double sampling methodology.

VOLUME			STATISTICAL RANGE IN CORDS	
TOTAL CUBIC FEET	TOTAL CORDS	PERCENT ERROR	MINIMUM	MAXIMUM
397,124	5,027	13.11%	4,367	5,686

VDU VOLUMES

A VDU is a Volume Determination Unit. Volumes and their associated statistics are calculated at the VDU level and summarized to the sale level. There is often a one to one relationship between a VDU and a Payment Unit, but not always, depending on the cruise design. Refer to the VDU TO PAYMENT UNIT table.

	VOLUME			RANGE IN CORDS	
VDU	TOTAL CUBIC FEET	TOTAL CORDS	PERCENT ERROR	MINIMUM	MAXIMUM
88	59,014	747	34.05%	493	1,001
100	116,924	1,480	28.89%	1,053	1,908
103	116,671	1,477	24.36%	1,117	1,837
119	895	11	96.24%	0	22
120	11,379	144	58.31%	60	228
126	30,957	392	40.36%	234	550
127	61,283	776	26.91%	567	984
TOTAL:	397,124	5,027		3,523	6,530

VDU TO PAYMENT UNIT

When a VDU is associated with more than one Payment Unit (PU), the VDU volumes are assigned to the PU based on acres of the VDU within the PU.

VDU	VDU ACRES	PU	PU ACRES
TOTAL:			

DESCRIPTION OF TIMBER BY PAYMENT UNIT (PU)

PU	MARKET GROUP	PRODUCT	QUANTITY	UNIT	ACRES	ADVERTISE PRICE
1	Black/Red (Hybrid)	Sawtimber	47.9	MBF	19.6	\$18,226.00
	Red Maple		1.9	MBF		
	Red Pine		13.9	MBF		
	Balsam Fir	Pulpwood	10	Cords		
	<i>Balsam Fir</i>		10	<i>Cords</i>		
	Black Cherry		15	Cords		
	<i>Black Cherry</i>	Sawtimber	3.2	<i>MBF</i>		
	<i>Black Cherry</i>	Pulpwood	9	<i>Cords</i>		
	Mixed Aspen		291	Cords		
	<i>B. T. Aspen</i>		291	<i>Cords</i>		
	Mixed Hardwood		136	Cords		
	<i>Red Maple</i>		136	<i>Cords</i>		
	Mixed Oak		126	Cords		
	<i>/Red (Hybrid) Oak</i>		126	<i>Cords</i>		
	Red Pine		9	Cords		
2	Black/Red (Hybrid)	Sawtimber	35.6	MBF	46.9	\$39,682.60
	Red Maple		12.3	MBF		
	Red Oak		17.5	MBF		
	Red Pine		105.5	MBF		
	Balsam Fir	Pulpwood	45	Cords		
	<i>Balsam Fir</i>	Sawtimber	2.0	<i>MBF</i>		
	<i>Balsam Fir</i>	Pulpwood	41	<i>Cords</i>		
	Black Cherry		42	Cords		
	<i>Black Cherry</i>		42	<i>Cords</i>		
	Mixed Aspen		241	Cords		
	<i>B. T. Aspen</i>		182	<i>Cords</i>		
	<i>Quaking Aspen</i>		59	<i>Cords</i>		
	Mixed Hardwood		278	Cords		
	<i>Red Maple</i>		278	<i>Cords</i>		
	Mixed Oak		191	Cords		
	<i>/Red (Hybrid) Oak</i>		114	<i>Cords</i>		
	<i>Red Oak</i>		77	<i>Cords</i>		
Red Pine		93	Cords			
3	Black/Red (Hybrid)	Sawtimber	17.5	MBF	45.4	\$35,022.60
	Red Maple		35.0	MBF		
	Red Oak		8.0	MBF		
	Sugar Maple		33.3	MBF		
	Balsam Fir	Pulpwood	105	Cords		
	<i>Balsam Fir</i>	Sawtimber	3.7	<i>MBF</i>		
	<i>Balsam Fir</i>	Pulpwood	98	<i>Cords</i>		
	Basswood		42	Cords		
	<i>Basswood</i>	Sawtimber	12.6	<i>MBF</i>		
	<i>Basswood</i>	Pulpwood	17	<i>Cords</i>		
	Black Cherry		9	Cords		
	<i>Black Cherry</i>		9	<i>Cords</i>		
	Mixed Aspen		659	Cords		
	<i>B. T. Aspen</i>	Sawtimber	22.4	<i>MBF</i>		
	<i>Quaking Aspen</i>		29.9	<i>MBF</i>		
	<i>B. T. Aspen</i>	Pulpwood	212	<i>Cords</i>		
	<i>Balsam Poplar</i>		23	<i>Cords</i>		
	<i>Quaking Aspen</i>		319	<i>Cords</i>		
	Mixed Hardwood		224	Cords		
	<i>Red Maple</i>		142	<i>Cords</i>		
	<i>Sugar Maple</i>		82	<i>Cords</i>		
Mixed Oak		67	Cords			
<i>/Red (Hybrid) Oak</i>		59	<i>Cords</i>			

DESCRIPTION OF TIMBER BY PAYMENT UNIT (PU), CON'T

PU	MARKET GROUP	PRODUCT	QUANTITY	UNIT	ACRES	ADVERTISE PRICE
3 con't	<i>Red Oak</i>	<i>Pulpwood</i>	8	<i>Cords</i>		
4	Red Maple	Sawtimber	6.7	MBF	6.6	\$2,976.15
	White Pine		3.2	MBF		
	Balsam Fir	Pulpwood	2	Cords		
	<i>Balsam Fir</i>	<i>Sawtimber</i>	0.7	<i>MBF</i>		
	<i>Balsam Fir</i>	<i>Pulpwood</i>	1	<i>Cords</i>		
	Black Cherry		15	Cords		
	<i>Black Cherry</i>		15	<i>Cords</i>		
	Jack Pine		62	Cords		
	<i>Jack Pine</i>	<i>Sawtimber</i>	1.2	<i>MBF</i>		
	<i>Jack Pine</i>	<i>Pulpwood</i>	60	<i>Cords</i>		
	Mixed Aspen		5	Cords		
	<i>Quaking Aspen</i>		5	<i>Cords</i>		
	Mixed Hardwood		44	Cords		
	<i>Red Maple</i>		44	<i>Cords</i>		
	Scotch Pine		1	Cords		
	White Pine		1	Cords		
5	Black/Red (Hybrid)	Sawtimber	1.4	MBF	16.3	\$6,893.10
	Red Maple		6.7	MBF		
	White Pine		28.7	MBF		
	Balsam Fir	Pulpwood	15	Cords		
	<i>Balsam Fir</i>		15	<i>Cords</i>		
	Jack Pine		134	Cords		
	<i>Jack Pine</i>		134	<i>Cords</i>		
	Mixed Aspen		43	Cords		
	<i>B. T. Aspen</i>		43	<i>Cords</i>		
	Mixed Hardwood		62	Cords		
	<i>Red Maple</i>		62	<i>Cords</i>		
	Mixed Oak		3	Cords		
	<i>/Red (Hybrid) Oak</i>		3	<i>Cords</i>		
	White Pine		20	Cords		
6	Red Maple	Sawtimber	17.2	MBF	31.1	\$18,627.55
	Red Pine		16.2	MBF		
	Sugar Maple		6.8	MBF		
	White Pine		38.2	MBF		
	Balsam Fir	Pulpwood	37	Cords		
	<i>Balsam Fir</i>	<i>Sawtimber</i>	2.8	<i>MBF</i>		
	<i>Balsam Fir</i>	<i>Pulpwood</i>	31	<i>Cords</i>		
	Black Cherry		5	Cords		
	<i>Black Cherry</i>		5	<i>Cords</i>		
	Jack Pine		11	Cords		
	<i>Jack Pine</i>	<i>Sawtimber</i>	4.8	<i>MBF</i>		
	<i>Jack Pine</i>	<i>Pulpwood</i>	1	<i>Cords</i>		
	Mixed Aspen		344	Cords		
	<i>B. T. Aspen</i>	<i>Sawtimber</i>	6.4	<i>MBF</i>		
	<i>B. T. Aspen</i>	<i>Pulpwood</i>	138	<i>Cords</i>		
	<i>Balsam Poplar</i>		4	<i>Cords</i>		
	<i>Quaking Aspen</i>		189	<i>Cords</i>		
	Mixed Hardwood		95	Cords		
	<i>Red Maple</i>		82	<i>Cords</i>		
	<i>Sugar Maple</i>		13	<i>Cords</i>		
	Red Pine		26	Cords		
	White Pine		63	Cords		
TOTAL:			453.5	MBF		

TOTAL: 3,571 Cords

Sale Specific Conditions & Requirements

Sale Name: Fool Hen Aspen

Sale Number: 63-020-25 Seq#: 2

1 - Sale Area

1.2 - Boundaries

1.2.1 - Painted Boundaries (9/19)

The sale boundary and Payment Unit boundaries are marked and identified by blue, red and yellow paint. Exterior sale boundary lines against private property are marked with blue paint. Exterior sale boundary lines against state are marked with red paint. Interior Payment Unit boundaries are marked with yellow paint. Retention patches are marked with red paint; no harvesting activities may occur within these areas. The painted boundary line trees are not Included Timber and are to be protected unless marked with orange paint. Yellow painted trees designating an interior Payment Unit boundary are only to be cut when all surrounding Payment Units have been paid.

2 - Timber Specifications

2.1 - Included Timber

2.1.1 - Clearcut Unit(s) with Unmerchantable Trees (6/14)

Within Payment Unit(s) 4, cut all species trees that are two (2) inches or more at DBH. In addition cut all scotch pine regardless of size. Do not cut any birch regardless of size.

2.1.2 - Clearcut Unit(s) w/o Unmerchantable Trees (8/11)

Within Payment Unit(s) 1, 3, and 5, cut all species trees which meet minimum piece specifications in 2.2 Utilization, except birch, hemlock and cedar. Within unit 2 only cut aspen and red maple which meet minimum piece specifications in 2.2 Utilization and all orange marked trees.

2.1.7 - Leave Tree Marked Unit(s) (6/14)

Within Payment Unit(s) 6, all trees, which meet minimum piece specifications in 2.2 Utilization, are designated for cutting except hemlock, cedar, birch and trees marked with green paint above and below stump height.

3 - Payments

3.3 - Pre-measured Sales

3.3.4 - Dividing Payment Units (7/14)

Payment Unit(s) may be divided at the request of the Purchaser and upon approval of the Unit Manager. Dividing Payment Units is a contract modification which requires a Timber Sale Contract Amendment.

4 - Transportation

4.1 - Construction

4.1.12 - No New Roads (1/12)

No new roads will be permitted in any Payment Unit. All operations are limited to existing roads. Only Skid trails will be allowed.

4.2 - Maintenance

4.2.4 - Grading (10/16)

For completion of the sale, state forest roads must be graded. In general, this will require a road grader or bulldozer to shape up the roads after forest products have been hauled off site. This includes cleaning of drainage areas, grading, crowning and filling with gravel, if necessary. The grading equipment to be used must be approved by the Unit Manager or his/her representative.

4.2.5 - Two Wheel Drive Condition (2/04)

All existing trail roads on and adjacent to the Sale Area must be passable by two-wheel drive traffic for the duration of the sale.

5 - Operations

5.2 - Conduct of Operations

5.2.1 - Slash

5.2.1.8 - Slash Height (12/08)

No slash or tree tops may exceed 24 inches in height.

5.2.2 - Hazard Trees/Snags

5.2.2.1 - Den Trees (10/16)

Obvious hollow and/or den trees shall be protected and left standing unless they are a safety hazard.

5.2.3 - Operating Restrictions

5.2.3.3 - Bark Slippage Restriction (3/09)

Within Payment Unit(s) 2, unless changed by written agreement, cutting and skidding are not permitted during the period of April 15 to July 15. This restriction is because of bark slippage.

5.2.3.5 - Oak Wilt Restriction (1/18)

Within Payment Unit(s) 1, and payment units 3-6 unless changed by written agreement, cutting, skidding, hauling within the sale and brushing of access roads to the sale are not permitted during the period of April 15 to July 15. Operations may be allowed if specific steps are taken to prevent damaging uncut oak during the high-risk period. Those steps may include completing all road brushing before April 15 and clearing a tree-length buffer along uncut oak cover before April 15. This is necessary to reduce the spread of oak wilt. For more information, contact the Unit Manager or his/her representative.

5.2.4 - Dead and Down Creation

5.2.4.4 - Dead and Down Creation, Grouse (6/18)

To encourage grouse and other wildlife, in Payment Unit(s) 1 and payment units 3-6 leave one 12" or larger diameter (or largest diameter trees within stand) whole tree on the ground for every two (2) acres, preferably a hardwood species such as oak or maple or if no hardwoods are present, a pine species (white or red). These trees will be evenly scattered throughout the Payment Unit, preferably at least two chains from any roads, two-tracks, or trails open to vehicles. This can be an unmerchantable piece or a full tree.

5.2.29 - Shrub Protection (1/20)

Do not cut or damage hawthorn, witch-hazel, dogwood or junberry. These woody-shrub plants are highly beneficial to various wildlife species.

5.2.32 - Decking/Landing Restoration (9/13)

All decking and landing areas must have the surface area restored to a condition equal to or better than before. This is to ensure the proper regeneration of the stand. Wood debris, chips and "cookies" from trimmings must be removed or scattered away from landing and loading areas and may not be windrowed on the edge.

5.2.38 - No Decking Against Live Trees (2/04)

Cut products may not be decked against unmarked or designated leave trees.

5.4 - Soil Protection

5.4.1 - Rutting Restriction, General (7/16)

Operations are to cease immediately if equipment and weather conditions result in rutting of roads and/or skid trails which are 12 inches or greater in depth and 50 feet in length. The Unit Manager or his/her representative may restrict hauling and/or skidding if ruts exceed the specified depth. With the Unit Manager or his/her representative's approval, the Purchaser may return to the area when the risk of rutting has decreased.

5.4.2 - Skid Trails (2/04)

Skid trails up and down slopes should be avoided. If, however, this is unavoidable, these trails will be left in a non-erodible condition using water bars, logs, and slash. Placing of slash on these skid trails while logging is ongoing may alleviate need for any further action. At the direction of the Sale Administrator, seed, fertilizer, and mulch may also be required.

5.8 - Protection of Endangered Species

5.8.5 - Protection of Raptor Nests (3/13)

All trees with raptor nests will be protected if found during harvesting operations. Notification will be made to the Unit Manager or his/her representative who will notify the Wildlife Biologist so an onsite evaluation and recommendation can be made, if necessary.

6 - Safety and Fire Prevention

6.2 - Signing

6.2.1 - Road Posting (10/20)

The Purchaser is responsible for posting and maintaining caution signs on all forest and county roads adjacent to units prior to beginning operations. The road must be posted at appropriate distances from the Sale Area to warn of logging activity and truck traffic. Signs must be removed when harvest operations are suspended or completed. The Purchaser will provide these signs.



TIMBER SALE MAP

This information provided by authority of Part 525, 1994 PA 451, as amended.

Sale Number
63-020-25

Date
09/04/2025

Forest Management Unit	County	Mapped By: Adamczyk	Scale	Page	Of
Cadillac Mgt Unit	Missaukee	Cruised By: River Valley Forestry	1:15,840	1	1

Township	Range	Section(s) and Subdivision(s)
23N	07W	Sec. 13 NWNW,S1/2NW,SENE,N1/2SW,SWSW; Sec. 13 SE; Sec. 14 SENE;

Cover Type			
A = Aspen	J = Jack Pine	O = Oak	U = Upland Brush
B = Paper Birch	K = Rock	P = Lowland Poplar	UM = Upland Mix Forest
C = Cedar	L = Lowland Brush	Q = Mixed Swamp Conifer	V = Bog or Marsh
D = Treed Bog	LM = Lowland Mix Forest	R = Red Pine	W = White Pine
E = Swamp Hardwoods	M = Maple, Beech, Birch	S = Black Spruce	X = Non Stocked
F = Spruce/Fir	MC = Mixed Conifer	T = Tamarack	Y = Sand
G = Grass	MD = Mixed Deciduous	Z = Water	
H = Hemlock	N = Marsh		

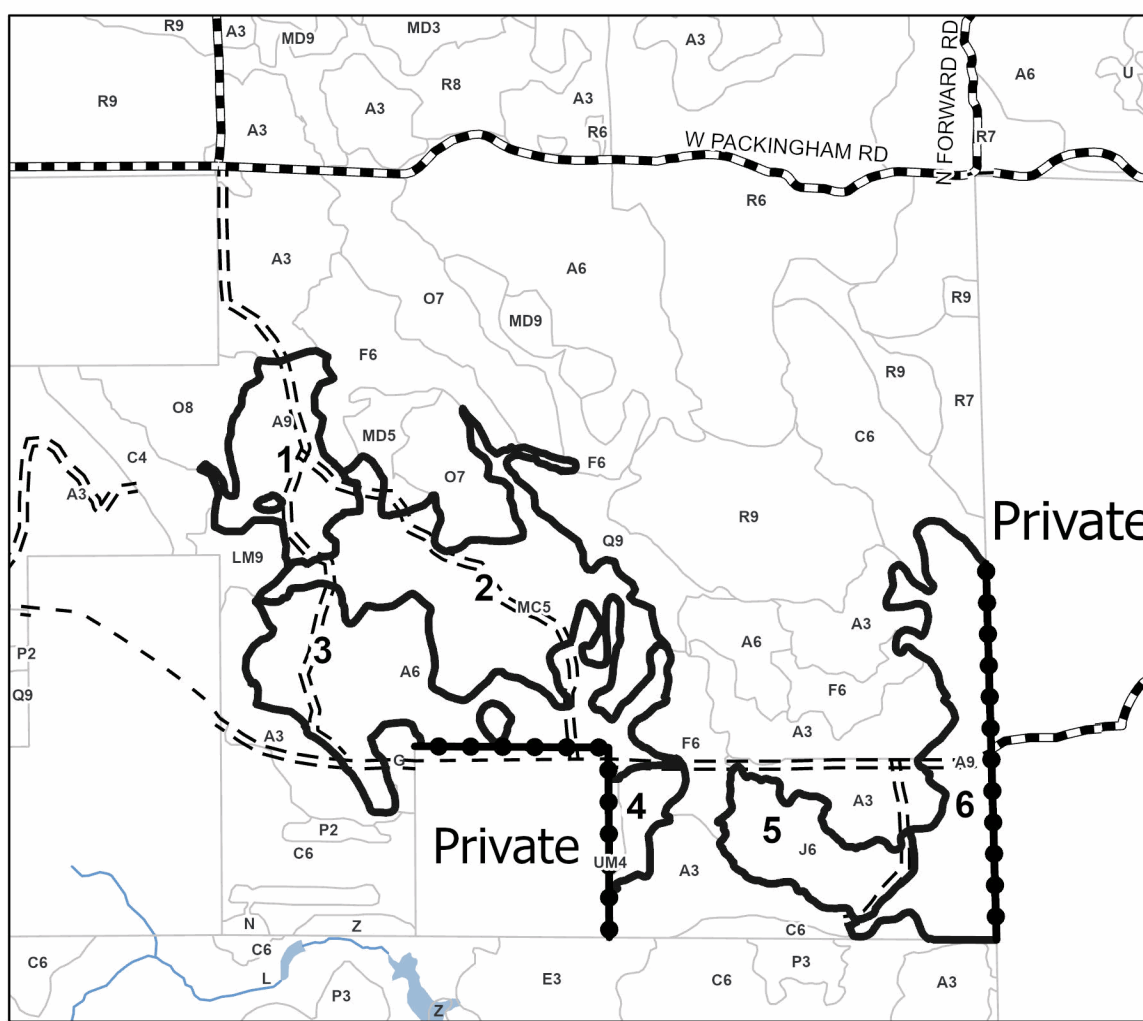
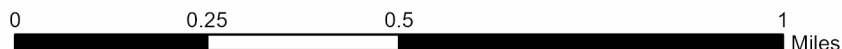
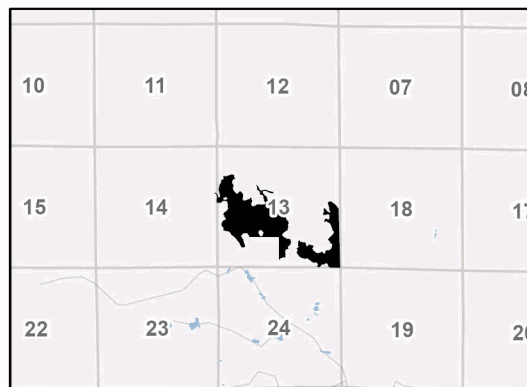
Density	
0 = Non Stocked	5 = Pole Timber Medium
1 = Seedling Sapling Poor	6 = Pole Timber Well
2 = Seedling Sapling Medium	7 = Saw Timber Poor
3 = Seedling Sapling Well	8 = Saw Timber Medium
4 = Pole Timber Poor	9 = Saw Timber Well

Payment Unit Number	Acres	Payment Unit Number	Acres
1	19.6	4	6.6
2	46.9	5	16.3
3	45.4	6	31.1

Fool Hen Aspen

165.9 Acres

Locator Map 1:100,000



Legend

- Payment Unit
- Private Line (Blue)
- Forest Access Route
- Paved Road
- Government Gravel/Dirt
- Private Gravel/Dirt



TIMBER SALE INFORMATION

Jellycoat Pine (63-021-25)
T23N, R07W, SEC. 12; T23N, R07W, SEC. 13.
Missaukee County (Advertised Price \$67,899.90)

A timber sale contract for this lump sum, sealed bid timber sale will be awarded to the responsible bidder offering the highest sealed bid price. All units of volume listed below were estimated using the Inventory Manager computer program and the new Michigan taper model. Bids must be at or above the following advertised price for each product and species:

<u>PRODUCTS & SPECIES</u>	<u>ESTIMATED UNITS*</u>	<u>ADVERTISED PRICE</u>
Sawtimber		
Black/Red (Hybrid) Oak	15.2 MBF	\$ 98.00 / MBF
Red Maple	34.2 MBF	\$ 136.00 / MBF
Red Pine	92.0 MBF	\$ 108.00 / MBF
White Pine	8.0 MBF	\$ 47.00 / MBF
Pulpwood		
Beech	6 Cords	\$ 14.60 / Cord
Black/Red (Hybrid) Oak	53 Cords	\$ 27.20 / Cord
Mixed Aspen	62 Cords	\$ 18.50 / Cord
Red Maple	204 Cords	\$ 14.60 / Cord
Red Pine	991 Cords	\$ 46.10 / Cord
White Pine	6 Cords	\$ 17.90 / Cord

* The total volume is statistically estimated within plus (+) or minus (-) 19.36 percent. There are an estimated 1,676 cords on this timber sale, plus or minus 325 cords at the 95% confidence level. The estimated units are final and not subject to adjustment. Prospective bidders are urged to examine this timber and to make their own estimates of quantity and quality.

BOND AND PAYMENT SCHEDULE:

1. A bond in the amount of \$6,790.00 to insure faithful performance of the conditions of the contract will be deposited by the successful bidder within 21 days of the sale award.
2. Cutting in any sale or unit without the required advance payment would be considered a trespass.
3. Total payment must be paid in advance or according to the following schedule :
 - (a) Ten percent (10%) of the sale value must be paid within 21 days of the sale award.
 - (b) The 10% down payment will be credited towards the first unit cut.
 - (c) Payment for each of the following units must be made before cutting begins in that unit:

PAYMENT UNIT NUMBER	PERCENT OF TOTAL SALE VALUE
01	43.3%
02	30.3%
03	6.7%
04	19.7%
4. If no cutting takes place, the 10% down payment will not be refunded.
5. Operations on the contract issued will terminate on 06/30/2029.

SALE STATISTICS

Volumes were calculated in cubic feet using the Michigan taper model. Cubic foot volume includes all wood inside bark for the product indicated. For display purposes, cubic feet were converted to cords and MBF using a simple conversion factor, e.g. 79 cubic feet per cord and 185 cubic feet per MBF. The cubic foot volumes are precise; the cords and MBF volumes are not. Cubic foot volume cannot be directly converted to cords or boards with precision.

SALE VOLUMES

The total estimated sale volume may not equal the sum of the species/products due to the nature of statistical calculations associated with double sampling methodology.

VOLUME		STATISTICAL RANGE IN CORDS		
TOTAL CUBIC FEET	TOTAL CORDS	PERCENT ERROR	MINIMUM	MAXIMUM
132,431	1,676	19.36%	1,352	2,001

VDU VOLUMES

A VDU is a Volume Determination Unit. Volumes and their associated statistics are calculated at the VDU level and summarized to the sale level. There is often a one to one relationship between a VDU and a Payment Unit, but not always, depending on the cruise design. Refer to the VDU TO PAYMENT UNIT table.

VDU	VOLUME		PERCENT ERROR	RANGE IN CORDS	
	TOTAL CUBIC FEET	TOTAL CORDS		MINIMUM	MAXIMUM
98	95,864	1,213	23.86%	924	1,503
109	27,445	347	41.21%	204	491
110	9,122	115	50.08%	58	173
TOTAL:	132,431	1,676		1,186	2,167

VDU TO PAYMENT UNIT

When a VDU is associated with more than one Payment Unit (PU), the VDU volumes are assigned to the PU based on acres of the VDU within the PU.

VDU	VDU ACRES	PU	PU ACRES
TOTAL:			

DESCRIPTION OF TIMBER BY PAYMENT UNIT (PU)

PU	MARKET GROUP	PRODUCT	QUANTITY	UNIT	ACRES	ADVERTISE PRICE
1	Black/Red (Hybrid)	Sawtimber	8.0	MBF	68.2	\$29,346.60
	Red Maple		13.6	MBF		
	Red Pine		23.8	MBF		
	White Pine		1.4	MBF		
	Beech	Pulpwood	4	Cords		
	Black/Red (Hybrid)		31	Cords		
	Mixed Aspen		19	Cords		
	<i>B. T. Aspen</i>	<i>Sawtimber</i>	1.4	<i>MBF</i>		
	<i>B. T. Aspen</i>	<i>Pulpwood</i>	16	<i>Cords</i>		
	Red Maple		78	Cords		
	Red Pine		470	Cords		
	White Pine		1	Cords		
	2	Black/Red (Hybrid)	Sawtimber	5.7		
Red Maple			9.6	MBF		
Red Pine			16.7	MBF		
White Pine			0.9	MBF		
Beech		Pulpwood	2	Cords		
Black/Red (Hybrid)			21	Cords		
Mixed Aspen			14	Cords		
<i>B. T. Aspen</i>		<i>Sawtimber</i>	1.0	<i>MBF</i>		
<i>B. T. Aspen</i>		<i>Pulpwood</i>	12	<i>Cords</i>		
Red Maple			54	Cords		
Red Pine			330	Cords		
White Pine			1	Cords		
3		Red Maple	Sawtimber	2.0	MBF	9.4
	Red Pine		14.8	MBF		
	White Pine		2.0	MBF		
	Mixed Aspen	Pulpwood	16	Cords		
	<i>B. T. Aspen</i>		8	<i>Cords</i>		
	<i>Quaking Aspen</i>		8	<i>Cords</i>		
	Red Maple		6	Cords		
	Red Pine		48	Cords		
	White Pine		1	Cords		
4	Black/Red (Hybrid)	Sawtimber	1.5	MBF	36.4	\$13,385.80
	Red Maple		9.0	MBF		
	Red Pine		36.7	MBF		
	White Pine		3.7	MBF		
	Black/Red (Hybrid)	Pulpwood	1	Cords		
	Mixed Aspen		13	Cords		
	<i>B. T. Aspen</i>	<i>Sawtimber</i>	3.9	<i>MBF</i>		
	<i>B. T. Aspen</i>	<i>Pulpwood</i>	5	<i>Cords</i>		
	Red Maple		66	Cords		
	Red Pine		143	Cords		
	White Pine		3	Cords		
TOTAL:			149.4	MBF		
TOTAL:			1,322	Cords		

Sale Specific Conditions & Requirements

Sale Name: Jellycoat Pine

Sale Number: 63-021-25 Seq#: 1

1 - Sale Area

1.2 - Boundaries

1.2.1 - Painted Boundaries (9/19)

The sale boundary and Payment Unit boundaries are marked and identified by red and yellow paint. Exterior sale boundary lines against state are marked with red paint. Interior Payment Unit boundaries are marked with yellow paint. Retention patches are marked with red paint; no harvesting activities may occur within these areas. The painted boundary line trees are not Included Timber and are to be protected unless marked with orange paint. Yellow painted trees designating an interior Payment Unit boundary are only to be cut when all surrounding Payment Units have been paid.

2 - Timber Specifications

2.1 - Included Timber

2.1.3 - Cut Tree Marked Unit(s) (12/08)

Within Payment Unit(s) 1-4, all trees are designated for cutting when marked with orange paint above and below stump height, regardless of merchantability.

2.2 - Utilization

2.2.7 - Uncut Designated Trees (2/04)

Liquidated damages of \$100 per tree will be assessed for every marked tree not cut.

3 - Payments

3.3 - Pre-measured Sales

3.3.4 - Dividing Payment Units (7/14)

Payment Unit(s) may be divided at the request of the Purchaser and upon approval of the Unit Manager. Dividing Payment Units is a contract modification which requires a Timber Sale Contract Amendment.

3.4 - Damaged Timber

3.4.1 - Damaged Timber (12/24)

General Condition and Requirement 3.4 Damaged Timber, defines liquidated damages for undesignated live merchantable trees which are cut or injured. Within the Sale Area, if more than 10% of trees (> 4.5" DBH) within a specified area of the sale are damaged, liquidated damages will be assessed for all trees damaged. Rates will be in accordance with General Condition and Requirement 3.4 Damaged Timber, or at a rate of \$500 per sawtimber tree and \$200 per pole sized tree, whichever is greater.

4 - Transportation

4.1 - Construction

4.1.3 - Slash and Earthen Piles (8/04)

Piles or windrows of earth along roads and landings that have been widened or constructed shall be leveled. Slash from road maintenance or construction, including stumps, shall be dispersed throughout the sale.

4.1.12 - No New Roads (1/12)

No new roads will be permitted in any Payment Unit. All operations are limited to existing roads. Only Skid trails will be allowed.

4.2 - Maintenance

4.2.5 - Two Wheel Drive Condition (2/04)

All existing trail roads on and adjacent to the Sale Area must be passable by two-wheel drive traffic for the duration of the sale.

5 - Operations

5.2 - Conduct of Operations

5.2.1 - Slash

5.2.1.8 - Slash Height (12/08)

No slash or tree tops may exceed 24 inches in height.

5.2.3 - Operating Restrictions

5.2.3.3 - Bark Slippage Restriction (3/09)

Within Payment Unit(s) , unless changed by written agreement, cutting and skidding are not permitted during the period of April 15 to July 15. This restriction is because of bark slippage.

5.2.3.4 - Oak Wilt Restriction, No Exceptions (1/18)

Within sale area, cutting, skidding, hauling within the sale and brushing of access roads to the sale are not permitted during the period of April 15 to July 15. No exceptions will be granted. This is necessary to reduce the spread of oak wilt.

5.2.3.14 - Heterobasidion Root Disease (HRD) (10/25)

This plantation is at risk of infection by the root rot fungus, *Heterobasidion irregulare*. To prevent the spread of this disease, cutting operations within Payment Unit(s) are restricted to the period of January 1 to February 28. Cutting may only occur outside this period with written permission of the Unit Manager or with the application of a preventative pesticide. Consultation with a forest health specialist will determine if cutting can occur prior to January 1 without pesticide application, dependent upon current and forecasted snow cover. Cellu-Treat is currently the only EPA registered product available in the United States for the control of *Heterobasidion*. This product is a water-soluble powder that must be applied to the stump, in accordance with the product label. Dye must be added to the product to provide visible evidence of adequate coverage. Application of this pesticide requires licensing by the Michigan Department of Agriculture and Rural Development. All applicators are required to: provide to the Sale Administrator notification of application per requirements in 40 CFR 170.120; and document and provide to the Sale Administrator annually, by December 31 and prior to closure of sale, the volume of product used and acres treated.

5.2.29 - Shrub Protection (1/20)

Do not cut or damage hawthorn, witch-hazel, dogwood or junberry. These woody-shrub plants are highly beneficial to various wildlife species.

5.2.32 - Decking/Landing Restoration (9/13)

All decking and landing areas must have the surface area restored to a condition equal to or better than before. This is to ensure the proper regeneration of the stand. Wood debris, chips and "cookies" from trimmings must be removed or scattered away from landing and loading areas and may not be windrowed on the edge.

5.2.38 - No Decking Against Live Trees (2/04)

Cut products may not be decked against unmarked or designated leave trees.

5.4 - Soil Protection

5.4.1 - Rutting Restriction, General (7/16)

Operations are to cease immediately if equipment and weather conditions result in rutting of roads and/or skid trails which are 12 inches or greater in depth and 50 feet in length. The Unit Manager or his/her representative may restrict hauling and/or skidding if ruts exceed the specified depth. With the Unit Manager or his/her representative's approval, the Purchaser may return to the area when the risk of rutting has decreased.

5.8 - Protection of Endangered Species

5.8.5 - Protection of Raptor Nests (3/13)

All trees with raptor nests will be protected if found during harvesting operations. Notification will be made to the Unit Manager or his/her representative who will notify the Wildlife Biologist so an onsite evaluation and recommendation can be made, if necessary.

6 - Safety and Fire Prevention

6.2 - Signing

6.2.1 - Road Posting (10/20)

The Purchaser is responsible for posting and maintaining caution signs on all forest and county roads next to sale area prior to beginning operations. The road must be posted at appropriate distances from the Sale Area to warn of logging activity and truck traffic. Signs must be removed when harvest operations are suspended or completed. The Purchaser will provide these signs.



TIMBER SALE MAP

This information provided by authority of Part 525, 1994 PA 451, as amended.

Sale Number
63-021-25

Date
09/05/2025

Forest Management Unit	County	Mapped By: Nate Koetje
Cadillac Mgt Unit	Missaukee	Cruised By: River Valley Forestry

Scale	Page	Of
1:14,265	1	1

Township	Range	Section(s) and Subdivision(s)
23N	07W	Sec. 12 SE; Sec. 13 NE,N1/2SE;

Cover Type			
A = Aspen	J = Jack Pine	O = Oak	U = Upland Brush
B = Paper Birch	K = Rock	P = Lowland Poplar	UM = Upland Mix Forest
C = Cedar	L = Lowland Brush	Q = Mixed Swamp Conifer	V = Bog or Marsh
D = Treed Bog	LM = Lowland Mix Forest	R = Red Pine	W = White Pine
E = Swamp Hardwoods	M = Maple, Beech, Birch	S = Black Spruce	X = Non Stocked
F = Spruce/Fir	MC = Mixed Conifer	T = Tamarack	Y = Sand
G = Grass	MD = Mixed Deciduous	Z = Water	
H = Hemlock	N = Marsh		

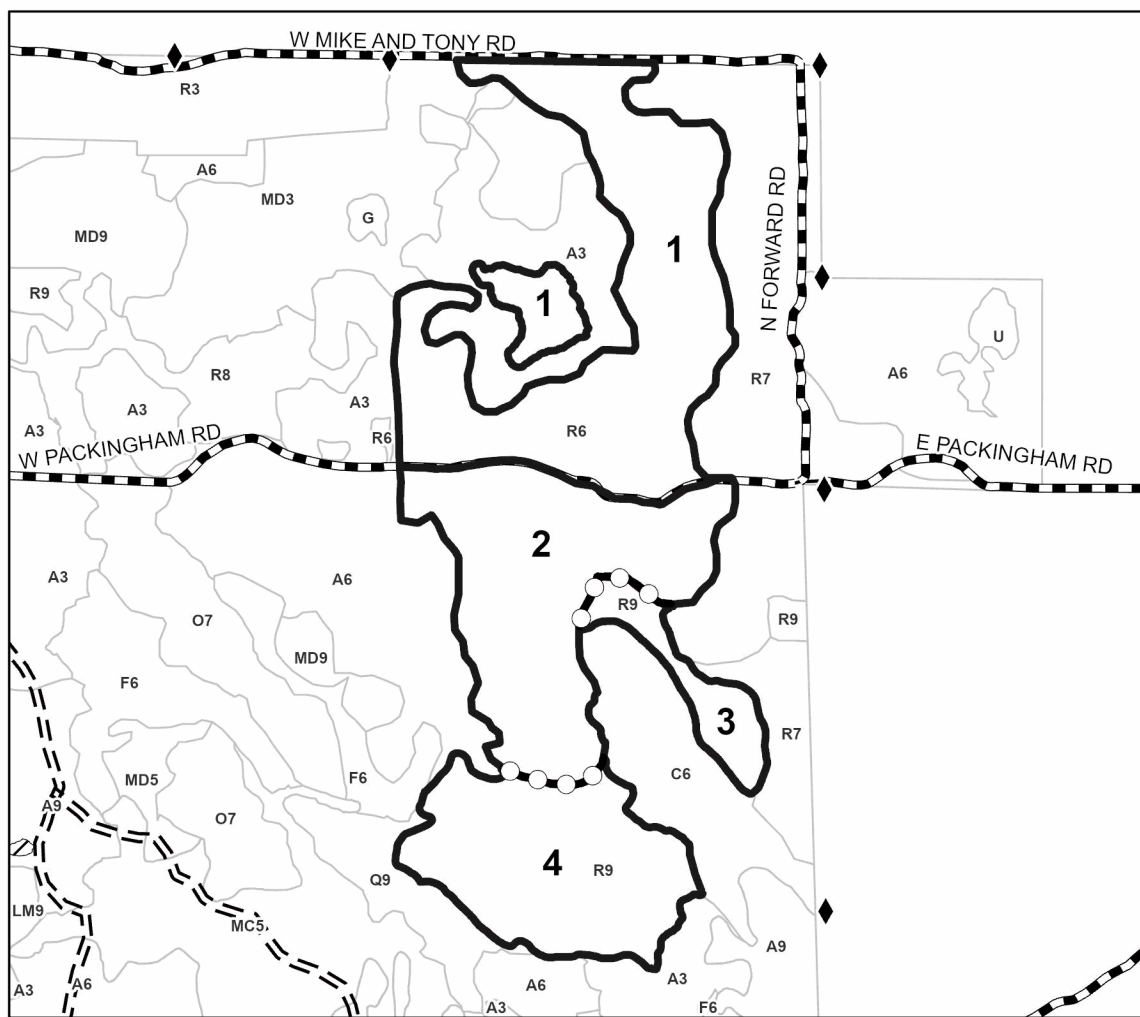
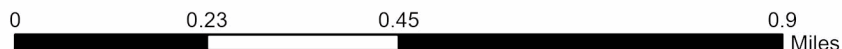
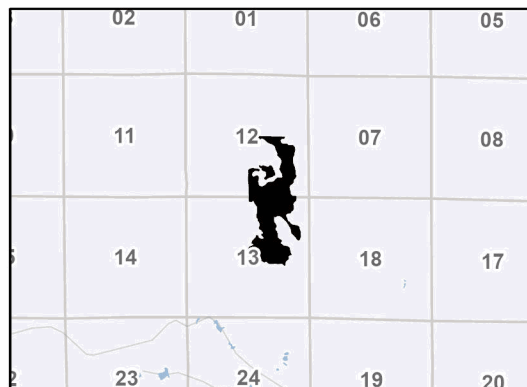
Density	
0 = Non Stocked	5 = Pole Timber Medium
1 = Seedling Sapling Poor	6 = Pole Timber Well
2 = Seedling Sapling Medium	7 = Saw Timber Poor
3 = Seedling Sapling Well	8 = Saw Timber Medium
4 = Pole Timber Poor	9 = Saw Timber Well

Payment Unit Number	Acres
2	47.9
3	9.4
4	36.4
1	68.2

Jellycoat Pine

161.9 Acres

Locator Map 1:100,000



Legend

- Payment Unit
- Payment Unit (Yellow)
- Forest Access Route
- Paved Road
- Government Gravel/Dirt

Use QR Code to open Map in App



TIMBER SALE INFORMATION

Fire Trap Pine (63-054-25)

T21N, R05W, SEC. 25; T21N, R05W, SEC. 26.
Missaukee County (Advertised Price \$131,601.70)

SALE NOTE: Units 8-11 are Massasauga Rattlesnake habitat with appropriate sale condition protection.

A recreation site such as a trail, pathway, or campground is within the sale area or the vicinity. Certain restrictions/specifications may be applicable including time restrictions. Access may be through other public land.

A timber sale contract for this lump sum, sealed bid timber sale will be awarded to the responsible bidder offering the highest sealed bid price. All units of volume listed below were estimated using the Inventory Manager computer program and the new Michigan taper model. Bids must be at or above the following advertised price for each product and species:

<u>PRODUCTS & SPECIES</u>	<u>ESTIMATED UNITS*</u>	<u>ADVERTISED PRICE</u>
Sawtimber		
Jack Pine	52.7 MBF	\$ 35.00 / MBF
Red Oak	59.7 MBF	\$ 170.00 / MBF
Red Pine	524.6 MBF	\$ 108.00 / MBF
White Oak	3.6 MBF	\$ 104.00 / MBF
White Pine	17.4 MBF	\$ 47.00 / MBF
Pulpwood		
B. T. Aspen	3 Cords	\$ 18.50 / Cord
Balsam Fir	3 Cords	\$ 34.20 / Cord
Black Cherry	18 Cords	\$ 14.60 / Cord
Jack Pine	964 Cords	\$ 13.75 / Cord
Mixed Oak	127 Cords	\$ 27.20 / Cord
Red Pine	918 Cords	\$ 46.10 / Cord
White Pine	129 Cords	\$ 17.90 / Cord

* The total volume is statistically estimated within plus (+) or minus (-) 9.62 percent. There are an estimated 4,232 cords on this timber sale, plus or minus 407 cords at the 95% confidence level. The estimated units are final and not subject to adjustment. Prospective bidders are urged to examine this timber and to make their own estimates of quantity and quality.

BOND AND PAYMENT SCHEDULE:

1. A bond in the amount of \$6,580.00 to insure faithful performance of the conditions of the contract will be deposited by the successful bidder within 21 days of the sale award.
2. Cutting in any sale or unit without the required advance payment would be considered a trespass.
3. Total payment must be paid in advance or according to the following schedule :
 - (a) Ten percent (10%) of the sale value must be paid within 21 days of the sale award.
 - (b) The 10% down payment will be credited towards the first unit cut.
 - (c) Payment for each of the following units must be made before cutting begins in that unit:

PAYMENT UNIT NUMBER	PERCENT OF TOTAL SALE VALUE
01	8.6%
02	0.7%
03	7.9%
04	6.5%
05	3.4%
06	6.0%
07	2.4%
08	22.5%
09	19.3%
10	5.9%
11	16.8%

4. If no cutting takes place, the 10% down payment will not be refunded.
5. Operations on the contract issued will terminate on 06/30/2029.

SALE STATISTICS

Volumes were calculated in cubic feet using the Michigan taper model. Cubic foot volume includes all wood inside bark for the product indicated. For display purposes, cubic feet were converted to cords and MBF using a simple conversion factor, e.g. 79 cubic feet per cord and 185 cubic feet per MBF. The cubic foot volumes are precise; the cords and MBF volumes are not. Cubic foot volume cannot be directly converted to cords or boards with precision.

SALE VOLUMES

The total estimated sale volume may not equal the sum of the species/products due to the nature of statistical calculations associated with double sampling methodology.

VOLUME			STATISTICAL RANGE IN CORDS	
TOTAL CUBIC FEET	TOTAL CORDS	PERCENT ERROR	MINIMUM	MAXIMUM
334,348	4,232	9.62%	3,825	4,639

VDU VOLUMES

A VDU is a Volume Determination Unit. Volumes and their associated statistics are calculated at the VDU level and summarized to the sale level. There is often a one to one relationship between a VDU and a Payment Unit, but not always, depending on the cruise design. Refer to the VDU TO PAYMENT UNIT table.

VDU	VOLUME		PERCENT ERROR	RANGE IN CORDS	
	TOTAL CUBIC FEET	TOTAL CORDS		MINIMUM	MAXIMUM
69	62,376	790	22.38%	613	966
72	2,296	29	91.83%	2	56
74	106,043	1,342	21.37%	1,055	1,629
78	5,339	68	44.69%	37	98
85	13,324	169	33.27%	113	225
86	50,782	643	18.92%	521	764
87	46,488	588	23.40%	451	726
91	47,699	604	23.06%	465	743
TOTAL:	334,348	4,232		3,257	5,207

VDU TO PAYMENT UNIT

When a VDU is associated with more than one Payment Unit (PU), the VDU volumes are assigned to the PU based on acres of the VDU within the PU.

VDU	VDU ACRES	PU	PU ACRES
TOTAL:			

DESCRIPTION OF TIMBER BY PAYMENT UNIT (PU)

PU	MARKET GROUP	PRODUCT	QUANTITY	UNIT	ACRES	ADVERTISE PRICE
1	Jack Pine	Sawtimber	0.7	MBF	26.8	\$11,302.75
	Black Cherry	Pulpwood	2	Cords		
	Jack Pine		15	Cords		
	Mixed Oak		6	Cords		
	<i>Red Oak</i>		6	<i>Cords</i>		
	Red Pine		236	Cords		
2	Jack Pine	Sawtimber	1.4	MBF	10.2	\$913.05
	Red Oak		2.7	MBF		
	White Oak		0.9	MBF		
	B. T. Aspen	Pulpwood	3	Cords		
	<i>B. T. Aspen</i>	<i>Sawtimber</i>	1.2	<i>MBF</i>		
	<i>B. T. Aspen</i>	<i>Pulpwood</i>	1	<i>Cords</i>		
	Black Cherry		11	Cords		
	Jack Pine		1	Cords		
	Mixed Oak		3	Cords		
	<i>Red Oak</i>		1	<i>Cords</i>		
	<i>White Oak</i>		2	<i>Cords</i>		
3	Jack Pine	Sawtimber	13.6	MBF	40.9	\$10,384.25
	Red Oak		17.7	MBF		
	Red Pine		12.7	MBF		
	White Oak		0.9	MBF		
	White Pine		2.6	MBF		
	Black Cherry	Pulpwood	2	Cords		
	Jack Pine		285	Cords		
	Mixed Oak		38	Cords		
	<i>Red Oak</i>		37	<i>Cords</i>		
	<i>White Oak</i>		1	<i>Cords</i>		
	Red Pine		6	Cords		
White Pine		3	Cords			
4	Jack Pine	Sawtimber	11.2	MBF	33.8	\$8,525.55
	Red Oak		14.6	MBF		
	Red Pine		10.5	MBF		
	White Oak		0.7	MBF		
	White Pine		2.1	MBF		
	Black Cherry	Pulpwood	1	Cords		
	Jack Pine		235	Cords		
	Mixed Oak		30	Cords		
	<i>Red Oak</i>		29	<i>Cords</i>		
	<i>White Oak</i>		1	<i>Cords</i>		
	Red Pine		5	Cords		
White Pine		3	Cords			
5	Jack Pine	Sawtimber	5.8	MBF	17.6	\$4,419.70
	Red Oak		7.6	MBF		
	Red Pine		5.5	MBF		
	White Oak		0.4	MBF		
	White Pine		1.1	MBF		
	Black Cherry	Pulpwood	1	Cords		
	Jack Pine		122	Cords		
	Mixed Oak		16	Cords		
	<i>Red Oak</i>		15	<i>Cords</i>		
	<i>White Oak</i>		1	<i>Cords</i>		
	Red Pine		2	Cords		
White Pine		1	Cords			
6	Jack Pine	Sawtimber	10.5	MBF	31.5	\$7,930.25
	Red Oak		13.6	MBF		
	Red Pine		9.8	MBF		

DESCRIPTION OF TIMBER BY PAYMENT UNIT (PU), CON'T

PU	MARKET GROUP	PRODUCT	QUANTITY	UNIT	ACRES	ADVERTISE PRICE
6 con't	White Oak	Sawtimber	0.7	MBF		
	White Pine		2.0	MBF		
	Black Cherry	Pulpwood	1	Cords		
	Jack Pine		219	Cords		
	Mixed Oak		28	Cords		
	<i>Red Oak</i>		27	<i>Cords</i>		
	<i>White Oak</i>		1	<i>Cords</i>		
	Red Pine		4	Cords		
	White Pine		3	Cords		
7	Red Pine	Sawtimber	23.6	MBF	12.8	\$3,102.00
	Red Pine	Pulpwood	12	Cords		
8	Red Pine	Sawtimber	175.5	MBF	62.1	\$29,649.20
	Red Pine	Pulpwood	232	Cords		
9	Red Pine	Sawtimber	123.7	MBF	19.7	\$25,438.00
	Red Pine	Pulpwood	229	Cords		
	White Pine		85	Cords		
10	Red Pine	Sawtimber	38.0	MBF	37.3	\$7,792.00
	Red Pine	Pulpwood	80	Cords		
11	Jack Pine	Sawtimber	9.5	MBF	49.3	\$22,144.95
	Red Oak		3.5	MBF		
	Red Pine		125.3	MBF		
	White Pine		9.6	MBF		
	Balsam Fir	Pulpwood	3	Cords		
	Jack Pine		87	Cords		
	Mixed Oak		6	Cords		
	<i>Red Oak</i>		6	<i>Cords</i>		
	Red Pine		112	Cords		
White Pine		34	Cords			
TOTAL:			658.0	MBF		
TOTAL:			2,162	Cords		

Sale Specific Conditions & Requirements

Sale Name: Fire Trap Pine

Sale Number: 63-054-25 Seq#: 1

1 - Sale Area

1.2 - Boundaries

1.2.1 - Painted Boundaries (9/19)

The sale boundary and Payment Unit boundaries are marked and identified by blue, red and yellow paint. Exterior sale boundary lines against private property are marked with blue paint. Exterior sale boundary lines against state are marked with red paint. Interior Payment Unit boundaries are marked with yellow paint. Retention patches are marked with red paint; no harvesting activities may occur within these areas. The painted boundary line trees are not Included Timber. Yellow painted trees designating an interior Payment Unit boundary are only to be cut when all surrounding Payment Units have been paid.

2 - Timber Specifications

2.1 - Included Timber

2.1.1 - Clearcut Unit(s) with Unmerchantable Trees (6/14)

Within Payment Unit(s) 2, 3, 4, 5, 6, and 11, cut all trees that are two (2) inches or more at DBH, except:

Within Payment Unit 2, do not cut white oak.

Within Payment Unit 11, do not cut white pine, red oak or white oak.

2.1.2 - Clearcut Unit(s) w/o Unmerchantable Trees (8/11)

Within Payment Unit(s) 9, cut all trees which meet minimum piece specifications in 2.2 Utilization, except do not cut trees marked with green paint or white pine 22 inches and greater at DBH.

2.1.3 - Cut Tree Marked Unit(s) (12/08)

Within Payment Unit(s) 7, 8, and 10, all trees are designated for cutting when marked with orange paint above and below stump height, regardless of merchantability.

2.1.8 - Designated Plantation Row Unit(s) (12/24)

Within Payment Unit(s) 1, all trees which meet minimum piece specifications in 2.2 Utilization, within designated plantation rows, are designated for cutting. Designated plantation rows begin with the third row in from the outside of the plantation, then continue every third row. Because of the variability of row direction, it shall be the responsibility of the Purchaser to maintain the third-row sequence. Do not cut White Pine greater than 15 inches at DBH.

4 - Transportation

4.1 - Construction

4.1.1 - Stream Crossings, General (1/25)

All stream crossing structures will be temporary and, therefore, shall be provided by the Purchaser and must be removed upon completion of the sale. All permits for stream crossings will be provided by the DNR.

4.1.3 - Slash and Earthen Piles (8/04)

Piles or windrows of earth along roads and landings that have been widened or constructed shall be leveled. Slash from road maintenance or construction, including stumps, shall be dispersed throughout the sale.

4.1.12 - No New Roads (1/12)

No new roads will be permitted in any Payment Unit. All operations are limited to existing roads. Only Skid trails will be allowed.

4.2 - Maintenance

4.2.4 - Grading (10/16)

For completion of the sale, state forest roads must be graded. In general, this will require a road grader or bulldozer to shape up the roads after forest products have been hauled off site. This includes cleaning of drainage areas, grading, crowning and filling with gravel, if necessary. The grading equipment to be used must be approved by the Unit Manager or his/her

representative.

4.2.5 - Two Wheel Drive Condition (2/04)

All existing trail roads on and adjacent to the Sale Area must be passable by two-wheel drive traffic for the duration of the sale.

5 - Operations

5.1 - Notification

5.1.1 - Pre-sale Conference (10/25)

A pre-sale conference on site between the Purchaser and Sale Administrator is required prior to beginning any operations to determine landing and road locations. The Unit Manager or his/her representative must be contacted at least 10 days in advance to schedule the conference.

5.1.4 - Post-Sale Conference (10/16)

A post-sale conference on site between the Purchaser and sale administrator is required 5 days prior to the completion of active logging operations to determine clean-up and repair of landings, road edges, and the fulfillment of other contract specifications.

5.2 - Conduct of Operations

5.2.1 - Slash

5.2.1.8 - Slash Height (12/08)

No slash or tree tops may exceed 24 inches in height.

5.2.1.11 - Slash for Reforestation (3/21)

To facilitate reforestation, the Sale Area shall be left with slash evenly distributed. Bunched tops within the cutting area shall be broken up and scattered. Stumps shall be cut low to the ground. Processing sites shall not be left with a compacted layer of slash; tops from these sites shall be hauled back into the cut area and scattered.

5.2.2 - Hazard Trees/Snags

5.2.2.1 - Den Trees (10/16)

Obvious hollow and/or den trees shall be protected and left standing unless they are a safety hazard. This includes standing dead trees.

5.2.3 - Operating Restrictions

5.2.3.1 - Operating Restrictions (9/11)

Within Payment Unit(s) 8, 9, 10 and 11 cutting, skidding, and hauling are limited to dry or frozen ground conditions. This restriction is intended to protect eastern massasauga rattlesnake habitat.

5.2.3.5 - Oak Wilt Restriction (1/18)

Within all Payment Units unless changed by written agreement, cutting, skidding, hauling within the sale and brushing of access roads to the sale are not permitted during the period of April 15 to July 15. Operations may be allowed if specific steps are taken to prevent damaging uncut oak during the high-risk period. Those steps may include completing all road brushing before April 15 and clearing a tree-length buffer along uncut oak cover before April 15. This is necessary to reduce the spread of oak wilt. For more information, contact the Unit Manager or his/her representative.

5.2.38 - No Decking Against Live Trees (2/04)

Cut products may not be decked against unmarked or designated leave trees.

5.2.39 - ORV Trail/Route Protection (4/18)

The Leota Trail is an ORV trail or route and is shown on the Timber Sale Map. Do not cut trees or damage posts with yellow ORV markers. All stumps within five (5) feet of the trail must be cut flush with the ground. Maintain a 20-foot-wide slash, debris, and rut free zone daily using the ORV trail or route as the centerline. Do not run equipment down the ORV trail or route. Skidding across the trail or route may only occur in locations approved by the Sale Administrator.

5.3 - Stream Protection

5.3.1 - Operating Near Stream (1/25)

No tracked or wheeled vehicles shall be operated within 50 feet of the stream in Payment Unit 9 except at an approved crossing.

5.3.2 - Parking Equipment Near Water (10/23)

Within Payment Unit(s) 9, the parking of or storage of equipment is prohibited within 100 feet of water bodies or ground water supplies. All equipment, when not in use for harvest operations, must be parked a minimum of 100 feet away from water sources (streams, rivers, lakes, ponds, vernal pools, ground water sources) and 50 feet away from slopes leading to water sources and/or riparian areas. This restriction is for preventing unforeseen oil and/or fluid leaks from contaminating water bodies and/or ground water supplies.

5.4 - Soil Protection

5.4.1 - Rutting Restriction, General (7/16)

Operations are to cease immediately if equipment and weather conditions result in rutting of roads and/or skid trails which are 12 inches or greater in depth and 50 feet in length. The Unit Manager or his/her representative may restrict hauling and/or skidding if ruts exceed the specified depth. With the Unit Manager or his/her representative's approval, the Purchaser may return to the area when the risk of rutting has decreased.

5.8 - Protection of Endangered Species

5.8.5 - Protection of Raptor Nests (3/13)

All trees with raptor nests will be protected if found during harvesting operations. Notification will be made to the Unit Manager or his/her representative who will notify the Wildlife Biologist so an onsite evaluation and recommendation can be made, if necessary.

5.8.8 - Protected Species, Other (2/12)

Massasauga rattlesnake habitat is present in Payment Units 8, 9, 10 and 11. Follow operating restrictions in 5.2.3.1 .

6 - Safety and Fire Prevention

6.2 - Signing

6.2.1 - Road Posting (10/20)

The Purchaser is responsible for posting and maintaining caution signs on any county or forest roads within or adjacent to the sale area prior to beginning operations. The road must be posted at appropriate distances from the Sale Area to warn of logging activity and truck traffic. Signs must be removed when harvest operations are suspended or completed. The Purchaser will provide these signs.

6.2.3 - Recreational Trail Posting (10/20)

The Purchaser is responsible for posting and maintaining caution signs on the Leota Trail prior to beginning operations. The trail must be posted at appropriate distances from the Sale Area to warn of logging activity and truck traffic at both ends of the trail. Signs must be removed when harvest operations are suspended or completed. The Purchaser will provide these signs.



TIMBER SALE MAP

This information provided by authority of Part 525, 1994 PA 451, as amended.

Sale Number
63-054-25

Date
08/13/2025

Forest Management Unit Cadillac Mgt Unit	County Missaukee	Mapped By: Bonnette
		Cruised By: Bonnette

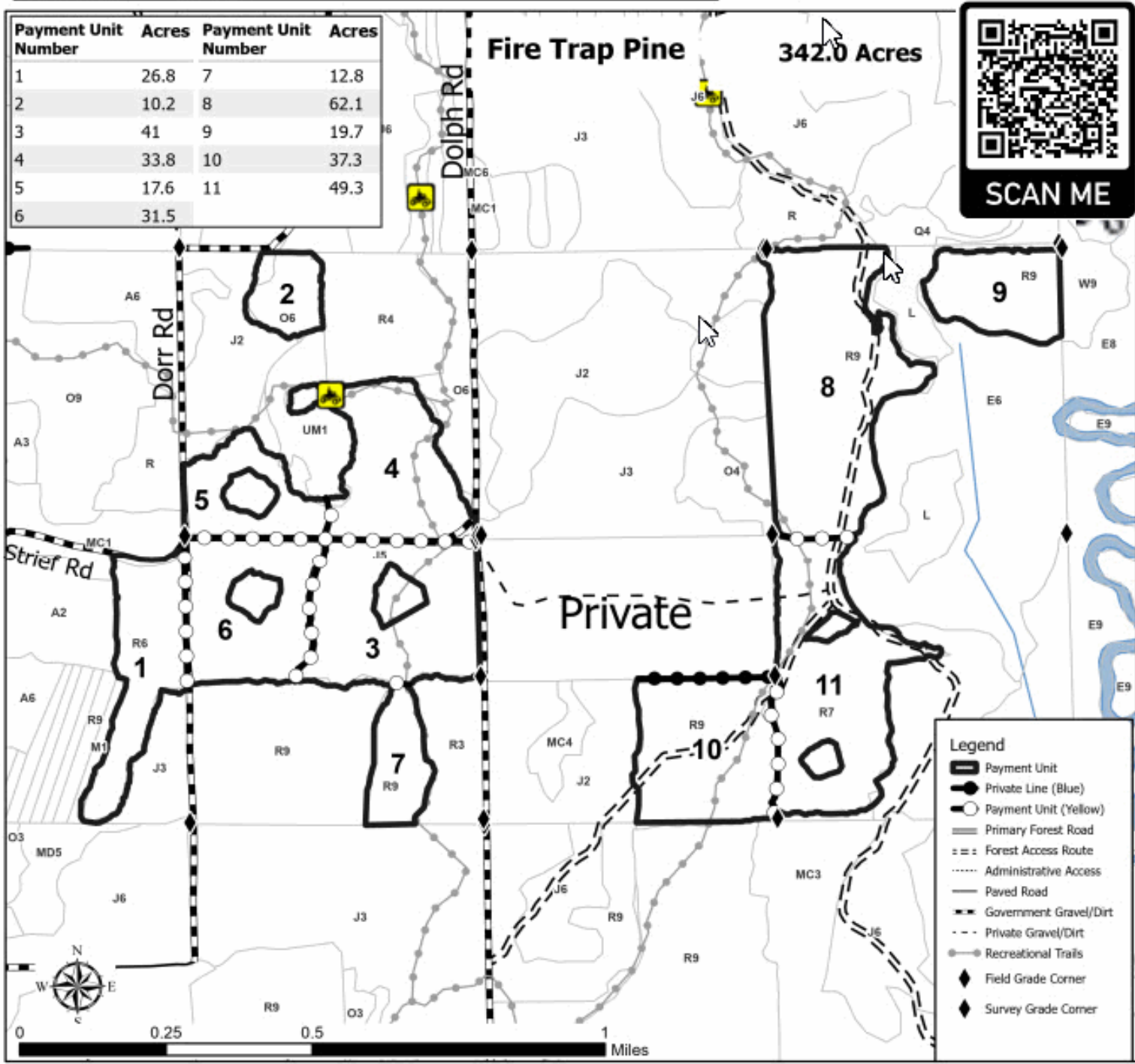
Scale 1:15,840	Page 1	Of 1
-------------------	-----------	---------

Township 21N	Range 05W	Section(s) and Subdivision(s) Sec. 25 NENW,N1/2NE,SWNE,SESW,N1/2SE; Sec. 25 SWSE; Sec. 26 SENW,NE,E1/2SW,SE;
-----------------	--------------	--

Cover Type			
A = Aspen	J = Jack Pine	O = Oak	U = Upland Brush
B = Paper Birch	K = Rock	P = Lowland Poplar	UM = Upland Mix Forest
C = Cedar	L = Lowland Brush	Q = Mixed Swamp Conifer	V = Bog or Marsh
D = Tread Bog	LM = Lowland Mix Forest	R = Red Pine	W = White Pine
E = Swamp Hardwoods	M = Maple, Beech, Birch	S = Black Spruce	X = Non Stocked
F = Spruce/Fir	MC = Mixed Conifer	T = Tamarack	Y = Sand
G = Grass	MD = Mixed Deciduous	Z = Water	
H = Hemlock	N = Marsh		

Density	
0 = Non Stocked	5 = Pole Timber Medium
1 = Seedling Sapling Poor	6 = Pole Timber Well
2 = Seedling Sapling Medium	7 = Saw Timber Poor
3 = Seedling Sapling Well	8 = Saw Timber Medium
4 = Pole Timber Poor	9 = Saw Timber Well

Payment Unit Number	Acres	Payment Unit Number	Acres
1	26.8	7	12.8
2	10.2	8	62.1
3	41	9	19.7
4	33.8	10	37.3
5	17.6	11	49.3
6	31.5		



Legend	
	Payment Unit
	Private Line (Blue)
	Payment Unit (Yellow)
	Primary Forest Road
	Forest Access Route
	Administrative Access
	Paved Road
	Government Gravel/Dirt
	Private Gravel/Dirt
	Recreational Trails
	Field Grade Corner
	Survey Grade Corner

TIMBER SALE INFORMATION

Stratford Complex (63-020-24)

T24N, R05W, SEC. 6; T24N, R05W, SEC. 7; T24N, R06W, SEC. 12.
Missaukee County (Advertised Price \$151,091.65)

SALE NOTE: A recreation site such as a trail, pathway, or campground is within the sale area or the vicinity. Certain restrictions/specifications may be applicable including time restrictions.

A timber sale contract for this lump sum, sealed bid timber sale will be awarded to the responsible bidder offering the highest sealed bid price. All units of volume listed below were estimated using the Inventory Manager computer program and the new Michigan taper model. Bids must be at or above the following advertised price for each product and species:

<u>PRODUCTS & SPECIES</u>	<u>ESTIMATED UNITS*</u>	<u>ADVERTISED PRICE</u>
Sawtimber		
Mixed Aspen	379.8 MBF	\$ 137.00 / MBF
Mixed Oak	53.8 MBF	\$ 117.00 / MBF
Red Maple	69.7 MBF	\$ 163.00 / MBF
Red Pine	32.3 MBF	\$ 130.00 / MBF
White Pine	46.9 MBF	\$ 57.00 / MBF
Pulpwood		
Balsam Fir	52 Cords	\$ 41.00 / Cord
Black Spruce	21 Cords	\$ 10.45 / Cord
Mixed Aspen	1,892 Cords	\$ 22.20 / Cord
Mixed Hardwood	1,147 Cords	\$ 17.55 / Cord
Mixed Oak	149 Cords	\$ 32.65 / Cord
Red Pine	27 Cords	\$ 55.30 / Cord
White Pine	172 Cords	\$ 21.45 / Cord

* The total volume is statistically estimated within plus (+) or minus (-) 11.62 percent. There are an estimated 4,824 cords on this timber sale, plus or minus 561 cords at the 95% confidence level. The estimated units are final and not subject to adjustment. Prospective bidders are urged to examine this timber and to make their own estimates of quantity and quality.

BOND AND PAYMENT SCHEDULE:

1. A bond in the amount of \$15,109.00 to insure faithful performance of the conditions of the contract will be deposited by the successful bidder within 21 days of the sale award.
2. Cutting in any sale or unit without the required advance payment would be considered a trespass.
3. Total payment must be paid in advance or according to the following schedule :
 - (a) Ten percent (10%) of the sale value must be paid within 21 days of the sale award.
 - (b) The 10% down payment will be credited towards the first unit cut.
 - (c) Payment for each of the following units must be made before cutting begins in that unit:

PAYMENT UNIT NUMBER	PERCENT OF TOTAL SALE VALUE
01	15.8%
02	23.2%
03	22.8%
04	19.1%
05	1.6%
06	17.5%
4. If no cutting takes place, the 10% down payment will not be refunded.
5. Operations on the contract issued will terminate on 06/30/2029.

SALE STATISTICS

Volumes were calculated in cubic feet using the Michigan taper model. Cubic foot volume includes all wood inside bark for the product indicated. For display purposes, cubic feet were converted to cords and MBF using a simple conversion factor, e.g. 79 cubic feet per cord and 185 cubic feet per MBF. The cubic foot volumes are precise; the cords and MBF volumes are not. Cubic foot volume cannot be directly converted to cords or boards with precision.

SALE VOLUMES

The total estimated sale volume may not equal the sum of the species/products due to the nature of statistical calculations associated with double sampling methodology.

VOLUME			STATISTICAL RANGE IN CORDS	
TOTAL CUBIC FEET	TOTAL CORDS	PERCENT ERROR	MINIMUM	MAXIMUM
381,119	4,824	11.62%	4,263	5,385

VDU VOLUMES

A VDU is a Volume Determination Unit. Volumes and their associated statistics are calculated at the VDU level and summarized to the sale level. There is often a one to one relationship between a VDU and a Payment Unit, but not always, depending on the cruise design. Refer to the VDU TO PAYMENT UNIT table.

	VOLUME			RANGE IN CORDS	
VDU	TOTAL CUBIC FEET	TOTAL CORDS	PERCENT ERROR	MINIMUM	MAXIMUM
29	59,266	750	23.86%	571	929
54	80,408	1,018	25.25%	761	1,275
61	91,992	1,164	24.71%	877	1,452
72	64,627	818	37.14%	514	1,122
78	76,130	964	23.87%	734	1,194
86	8,696	110	51.18%	54	166
TOTAL:	381,119	4,824		3,510	6,138

VDU TO PAYMENT UNIT

When a VDU is associated with more than one Payment Unit (PU), the VDU volumes are assigned to the PU based on acres of the VDU within the PU.

VDU	VDU ACRES	PU	PU ACRES
TOTAL:			

DESCRIPTION OF TIMBER BY PAYMENT UNIT (PU)

PU	MARKET GROUP	PRODUCT	QUANTITY	UNIT	ACRES	ADVERTISE PRICE	
1	Mixed Aspen	Sawtimber	20.9	MBF	36.5	\$23,938.50	
	<i>B. T. Aspen</i>		20.9	<i>MBF</i>			
	Mixed Oak		8.7	MBF			
	<i>/Red (Hybrid) Oak</i>		8.7	<i>MBF</i>			
	Red Maple		6.7	MBF			
	Red Pine		32.3	MBF			
	White Pine		46.9	MBF			
	Balsam Fir		Pulpwood	52			Cords
	Black Spruce			21			Cords
	Mixed Aspen			59			Cords
	<i>B. T. Aspen</i>			59			<i>Cords</i>
	Mixed Hardwood			107			Cords
	<i>Red Maple</i>			107			<i>Cords</i>
	Mixed Oak			42			Cords
	<i>/Red (Hybrid) Oak</i>			27			<i>Cords</i>
	<i>Red Oak</i>			15			<i>Cords</i>
	Red Pine			27			Cords
	White Pine	172		Cords			
2	Mixed Aspen	Sawtimber	114.3	MBF	36.6	\$35,019.75	
	<i>B. T. Aspen</i>		114.3	<i>MBF</i>			
	Mixed Oak		8.0	MBF			
	<i>Red Oak</i>		8.0	<i>MBF</i>			
	Red Maple		33.2	MBF			
	Mixed Aspen		Pulpwood	249			Cords
	<i>B. T. Aspen</i>			249			<i>Cords</i>
	Mixed Hardwood			380			Cords
	<i>Red Maple</i>			380			<i>Cords</i>
	Mixed Oak			25			Cords
<i>Red Oak</i>	25	<i>Cords</i>					
3	Mixed Aspen	Sawtimber	52.7	MBF	63.1	\$34,524.10	
	<i>B. T. Aspen</i>		52.7	<i>MBF</i>			
	Mixed Oak		37.1	MBF			
	<i>Red Oak</i>		37.1	<i>MBF</i>			
	Red Maple		29.8	MBF			
	Mixed Aspen		Pulpwood	434			Cords
	<i>B. T. Aspen</i>			434			<i>Cords</i>
	Mixed Hardwood			412			Cords
	<i>Red Maple</i>			412			<i>Cords</i>
	Mixed Oak			38			Cords
<i>Red Oak</i>	38	<i>Cords</i>					
4	Mixed Aspen	Sawtimber	94.6	MBF	44.4	\$28,810.65	
	<i>Quaking Aspen</i>		94.6	<i>MBF</i>			
	Mixed Aspen	Pulpwood	572	Cords			
	<i>Quaking Aspen</i>		572	<i>Cords</i>			
	Mixed Hardwood		161	Cords			
	<i>Black Cherry</i>		83	<i>Cords</i>			
	<i>Red Maple</i>		78	<i>Cords</i>			
	Mixed Oak		10	Cords			
<i>Red Oak</i>	10	<i>Cords</i>					
5	Mixed Aspen	Pulpwood	95	Cords	16.2	\$2,400.00	
	<i>B. T. Aspen</i>		41	<i>Cords</i>			
	<i>Quaking Aspen</i>		54	<i>Cords</i>			
	Mixed Hardwood		11	Cords			
	<i>Black Cherry</i>	<i>Sawtimber</i>	3.3	<i>MBF</i>			
	<i>Black Cherry</i>		<i>Pulpwood</i>	1			<i>Cords</i>
	<i>Red Maple</i>			3			<i>Cords</i>

DESCRIPTION OF TIMBER BY PAYMENT UNIT (PU), CON'T

PU	MARKET GROUP	PRODUCT	QUANTITY	UNIT	ACRES	ADVERTISE PRICE
5 con't	Mixed Oak	Pulpwood	3	Cords		
	<i>Red Oak</i>		3	<i>Cords</i>		
6	Mixed Aspen	Sawtimber	97.3	MBF	31.9	\$26,398.65
	<i>B. T. Aspen</i>		97.3	<i>MBF</i>		
	Mixed Aspen	Pulpwood	483	Cords		
	<i>B. T. Aspen</i>		483	<i>Cords</i>		
	Mixed Hardwood		76	Cords		
	<i>Red Maple</i>		76	<i>Cords</i>		
	Mixed Oak		31	Cords		
<i>Red Oak</i>		31	<i>Cords</i>			
TOTAL:			582.5	MBF		
TOTAL:			3,460	Cords		

Sale Specific Conditions & Requirements

Sale Name: Stratford Complex

Sale Number: 63-020-24 Seq#: 2

1 - Sale Area

1.2 - Boundaries

1.2.1 - Painted Boundaries (9/19)

The sale boundary and Payment Unit boundaries are marked and identified by red paint and roads. Exterior sale boundary lines against state are marked with red paint. Interior Payment Unit line between Payment Units 3 and 4 is road. The painted boundary line trees are not Included Timber and are to be protected unless marked with orange paint. Yellow painted trees designating an interior Payment Unit boundary are only to be cut when all surrounding Payment Units have been paid.

2 - Timber Specifications

2.1 - Included Timber

2.1.1 - Clearcut Unit(s) with Unmerchantable Trees (6/14)

Within Payment Unit(s) 2-6, cut all trees that are two (2) inches or more at DBH, except do not cut white pine or red pine. In addition, do not cut any oak that is 22 inches or more at DBH.

2.1.5 - Overstory Removal Unit(s) (8/11)

Within Payment Unit(s) 1, all trees which meet minimum piece specifications in 2.2 Utilization, are designated for cutting, except do not cut white pine or red pine over 17 inches in DBH. In addition, do not cut any oak that is 22 inches or more at DBH.

3 - Payments

3.3 - Pre-measured Sales

3.3.4 - Dividing Payment Units (7/14)

Payment Unit(s) 1-6 may be divided at the request of the Purchaser and upon approval of the Unit Manager. Dividing Payment Units is a contract modification which requires a Timber Sale Contract Amendment. There will be only one division per Payment Unit.

4 - Transportation

4.1 - Construction

4.1.12 - No New Roads (1/12)

No new roads will be permitted in any Payment Unit. All operations are limited to existing roads. Skid trails only will be allowed.

4.2 - Maintenance

4.2.5 - Two Wheel Drive Condition (2/04)

All existing trail roads on and adjacent to the Sale Area must be passable by two-wheel drive traffic for the duration of the sale.

5 - Operations

5.2 - Conduct of Operations

5.2.1 - Slash

5.2.1.8 - Slash Height (12/08)

No slash or tree tops may exceed 24 inches in height.

5.2.2 - Hazard Trees/Snags

5.2.2.1 - Den Trees (10/16)

Obvious hollow and/or den trees shall be protected and left standing unless they are a safety hazard.

5.2.4 - Dead and Down Creation

5.2.4.4 - Dead and Down Creation, Grouse (6/18)

To encourage grouse and other wildlife, in Payment Unit(s) 2 and 4-6, leave one, 12-inch diameter or larger log-length (8 foot minimum) piece on the ground for every 2 acres. These trees will be evenly scattered throughout the unit, preferably at least two chains from any roads, two-tracks, or trails open to vehicles. This can be an unmerchantable piece or a full tree. Each log must be clearly identified by a piece of blue flagging.

5.2.22 - Operating Caution

5.2.22.1 - Operating Caution (6/11)

It is recommended, but not required, that within Payment Unit(s) 1, cutting, skidding, and hauling occur during dry summer or frozen winter conditions. The reason for the recommendation is because of variable wet areas.

5.2.32 - Decking/Landing Restoration (9/13)

All decking and landing areas must have the surface area restored to a condition equal to or better than before. This is to ensure the proper regeneration of the stand. Wood debris, chips and "cookies" from trimmings must be removed or scattered away from landing and loading areas and may not be windrowed on the edge.

5.2.38 - No Decking Against Live Trees (2/04)

Cut products may not be decked against unmarked or designated leave trees.

5.2.39 - ORV Trail/Route Protection (4/18)

There is an ORV trail or route within the Sale Area and is shown on the Timber Sale Map. Do not cut trees or damage posts with ORV markers. All stumps within 5 feet of the trail must be cut flush with the ground. Maintain a 20-foot-wide slash, debris, and rut free zone daily using the ORV trail or route as the centerline. Do not run equipment down the ORV trail or route. Skidding across the trail or route may only occur in locations approved by the Sale Administrator.

5.2.41 - Snowmobile Trail Protection (9/11)

There is a snowmobile trail associated with the sale and is shown on the Timber Sale Map. Do not cut or damage posts with orange trail markers or traffic control signs. If the trail is used for hauling, it must be graded to the satisfaction of the Unit Manager or his/her representative prior to December 1. If the trail road is to be used for hauling during the snowmobile season, then a snow-covered base must be left on the trail. The snowmobile trail may only be crossed at right angles. Maintain a 20-foot-wide slash, debris, and rut free zone daily using the snowmobile trail as the centerline. No decking of forest products will be permitted along the snowmobile trail. All stumps within 20 feet of the snowmobile trail must be cut at ground level. In addition, any trees cut within 5 feet of the trail must have the stumps removed and be disposed of according to the direction of the Unit Manager or his/her representative.

5.4 - Soil Protection

5.4.1 - Rutting Restriction, General (7/16)

Operations are to cease immediately if equipment and weather conditions result in rutting of roads and/or skid trails which is 12 inches or greater in depth and 50 feet in length. The Unit Manager or his/her representative may restrict hauling and/or skidding if ruts exceed the specified depth. With the Unit Manager or his/her representative's approval, the Purchaser may return to the area when the risk of rutting has decreased.

5.4.6 - Wet Area Protection (5/10)

No harvesting operations, including skidding and felling, are to take place within any vernal pond areas or drainages. When harvesting occurs, there should be no disturbance to the vernal pond depression. All equipment, trees and tops should be kept out of this area. Within 100 feet of the pond, equipment should only be used when the soil is in a dry or frozen condition. Care must be taken by the Purchaser to identify and avoid operating in these areas of the timber sale.

5.8 - Protection of Endangered Species

5.8.5 - Protection of Raptor Nests (3/13)

All trees with raptor nests will be protected if found during harvesting operations. Notification will be made to the Unit Manager or his/her representative who will notify the Wildlife Biologist so an onsite evaluation and recommendation can be made, if necessary.

6 - Safety and Fire Prevention

6.2 - Signing

6.2.1 - Road Posting (10/20)

The Purchaser is responsible for posting and maintaining caution signs on all sale associated roads prior to beginning operations. The road must be posted at appropriate distances from the Sale Area to warn of logging activity and truck traffic. Signs must be removed when harvest operations are suspended or completed. The Purchaser will provide these signs.

6.2.2 - Snowmobile Trail Posting (10/20)

The Purchaser is responsible for posting and maintaining caution signs on the sale associated snowmobile trail prior to beginning operations during the snowmobile season (approximately December 1 to March 31). The trail must be posted at appropriate distances from the Sale Area to warn of logging activity and truck traffic. Signs must be removed when harvest operations are suspended or completed. The Purchaser will provide these signs.

6.2.3 - Recreational Trail Posting (10/20)

The Purchaser is responsible for posting and maintaining caution signs on the ORV trail within the sale prior to beginning operations. The trail must be posted at appropriate distances from the Sale Area to warn of logging activity and truck traffic at both ends of the trail. Signs must be removed when harvest operations are suspended or completed. The Purchaser will provide these signs.



TIMBER SALE MAP

This information provided by authority of Part 525, 1994 PA 451, as amended.

Sale Number

63-020-24

Date

09/24/2024

Forest Management Unit

Cadillac

County

Missaukee

Mapped By: Krugh

Cruised By: Edison/Krugh

Scale

1:23,510

Page

1

Of

1

Township
24N

Range
5W/6W

Section(s) and
Subdivision(s) 6 NENE,S1/2NE,N1/2SE 7 E1/2NW,NE,SW,SE 12 SESE

Cover Type

A = Aspen	J = Jack Pine	O = Oak	U = Upland Brush
B = Paper Birch	K = Rock	P = Lowland Poplar	UM = Upland Mix Forest
C = Cedar	L = Lowland Brush	Q = Mixed Swamp Conifer	V = Bog or Marsh
D = Treed Bog	LM = Lowland Mix Forest	R = Red Pine	W = White Pine
E = Swamp Hardwoods	M = Maple, Beech, Birch	S = Black Spruce	X = Non Stocked
F = Spruce/Fir	MC = Mixed Conifer	T = Tamarack	Y = Sand
G = Grass	MD = Mixed Deciduous	Z = Water	
H = Hemlock	N = Marsh		

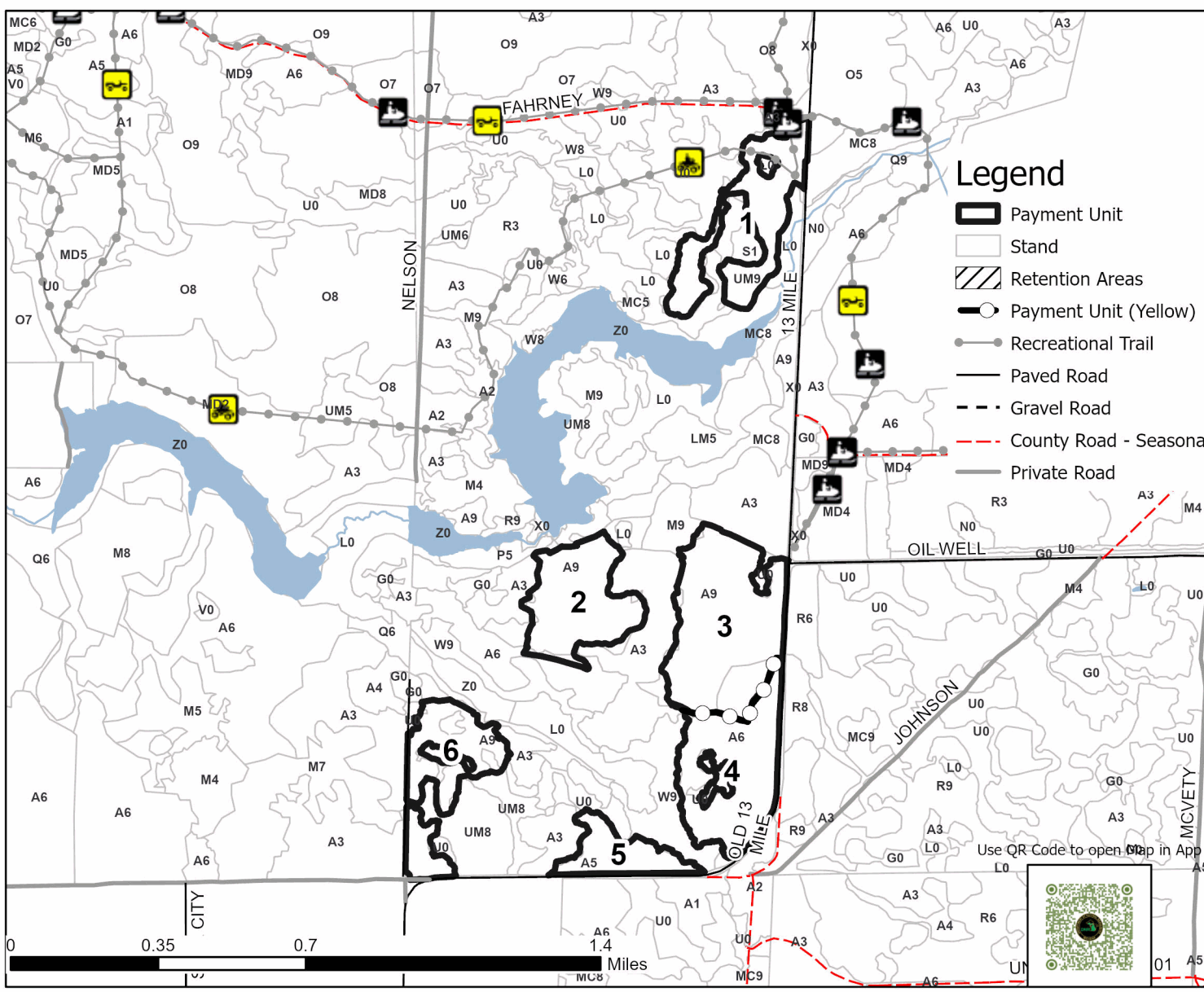
Density

0 = Non Stocked	5 = Pole Timber Medium
1 = Seedling Sapling Poor	6 = Pole Timber Well
2 = Seedling Sapling Medium	7 = Saw Timber Poor
3 = Seedling Sapling Well	8 = Saw Timber Medium
4 = Pole Timber Poor	9 = Saw Timber Well

PU #	Acres	PU #	Acres
1	36.5	4	44.4
2	36.6	5	16.2
3	63.1	6	31.9

Stratford Complex

Acres 228.7



Fire Trap Pine (63-054-25)
T21N, R05W, SEC. 25; T21N, R05W, SEC. 26; Missaukee COUNTY

In response to the notice of sale to be held 3:00 p.m. (local time) on April 29, 2026, I am hereby submitting my sealed bid (firm offer) for the following forest products to be cut. Bids for individual species must be at or above the advertised price. All non-responsive bid forms may be rejected.

<u>PRODUCTS & SPECIES</u>	<u>ESTIMATED VOLUME*</u>	<u>ADVERTISED PRICE</u>	<u>BID PRICE/UNIT</u>
Sawtimber			
Jack Pine	52.7 MBF	\$ 35.00/MBF	\$ _____
Red Oak	59.7 MBF	\$ 170.00/MBF	\$ _____
Red Pine	524.6 MBF	\$ 108.00/MBF	\$ _____
White Oak	3.6 MBF	\$ 104.00/MBF	\$ _____
White Pine	17.4 MBF	\$ 47.00/MBF	\$ _____
Pulpwood			
B. T. Aspen	3 Cords	\$ 18.50/Cord	\$ _____
Balsam Fir	3 Cords	\$ 34.20/Cord	\$ _____
Black Cherry	18 Cords	\$ 14.60/Cord	\$ _____
Jack Pine	964 Cords	\$ 13.75/Cord	\$ _____
Mixed Oak	127 Cords	\$ 27.20/Cord	\$ _____
Red Pine	918 Cords	\$ 46.10/Cord	\$ _____
White Pine	129 Cords	\$ 17.90/Cord	\$ _____

*The volumes are statistically estimated within plus (+) or minus (-) 9.62 percent at 95% confidence level. These estimated volumes are final and not subject to adjustment. Prospective bidders are urged to examine this timber and to make their own estimates of quantity and quality.

I understand that any or all bids may be rejected. All bids must be signed and all bid items must be bid or the bid form may be rejected. I also understand that consideration and awarding a contract will be based upon my past performance and ability to complete the contract based upon equipment and staffing subject to my control.

FEDERAL ID: ____ - ____ - ____ or SOCIAL SECURITY NUMBER: ____ - ____ - ____

Company or individual bidding: _____

Company representative's name: _____

Address: _____

City: _____ State: _____ Zip: _____

IF AVAILABLE, PLEASE PLACE THE PERSONALIZED LABEL FROM YOUR PROSPECTUS IN THE ABOVE BOX.

Individual or company representative's signature: _____ Date: _____

Phone number : _____ Email (optional): _____

THE WINNING BIDDER MUST COMPLETE THE VERIFICATION OF WORKER'S DISABILITY COMPENSATION ACT COMPLIANCE (ON REVERSE SIDE IF DOUBLE SIDED) WITHIN 21 DAYS OF SALE AWARD DATE



FOR DEPARTMENT USE ONLY	
Sale Number (XX - XXX - XX - XX)	
Forest Management Unit:	

TIMBER SALE VERIFICATION OF WORKER'S DISABILITY COMPENSATION ACT COMPLIANCE

As required by Act 317, P.A. 1969 (Worker's Compensation) and
Part 5 of Act 451 of 1994, as amended.

VERIFICATION OF WORKER'S DISABILITY COMPENSATION ACT COMPLIANCE

- This verification must be completed and submitted within 21 days of contract award and prior to the issuance of the timber sale contract.
- In addition, if boxes 2B or 2C are checked, then Notice of Exclusion or Certificate of Insurance must be submitted within twenty-one (21) days of the contract award and prior to the issuance of the timber sale contract.
- All information must be typed or printed except for written signatures.

Please Check Appropriate Categories:

1. My business is organized as (you **must** check one of the boxes below):
 - A. Sole Proprietorship (individual)
 - B. Partnership
 - C. Corporation
2. You **must** check one of the boxes below:
 - A. I certify my business is a sole proprietorship and it has no employees but the sole proprietor. I am not subject to the Worker's Compensation Laws.
 - B. I certify my business has satisfied its obligation to the Worker's Compensation Act through the use of an approved Notice of Exclusion (BWC-337, Rev. 5/96). I will provide a copy of the Notice of Exclusion within 21 days of the contract award. (For questions or a copy of the BWC-337, please call the Worker's Compensation Bureau at 517-322-1195).
 - C. I certify my business has a Worker's Compensation Policy. I will provide an original Certificate of Insurance within twenty-one (21) days of the contract award.
3. If you have checked item 2(A) or 2(B), you **must** indicate the number of **both** full-time and part-time employees, other than yourself, including family members and active partners (if none, you must enter "0").

_____ Full-time Employees

_____ Part-time Employees

Name of Business		Federal ID (or) Social Security No.	
Address		Telephone ()	
City	State	ZIP	

I hereby certify that the above information is true and correct. I agree to notify the Michigan DNR of any changes that occur in factors affecting my coverage during any of my present and future operations.

Signature of Owner or Authorized Representative

Title

Date

Please complete the "SEALED BID" information on the next page

Stratford Complex (63-020-24)
T24N, R05W, SEC. 6; T24N, R05W, SEC. 7; T24N, R06W, SEC. 12; Missaukee

In response to the notice of sale to be held 3:00 p.m. (local time) on April 29, 2026, I am hereby submitting my sealed bid (firm offer) for the following forest products to be cut. Bids for individual species must be at or above the advertised price. All non-responsive bid forms may be rejected.

<u>PRODUCTS & SPECIES</u>	<u>ESTIMATED VOLUME*</u>	<u>ADVERTISED PRICE</u>	<u>BID PRICE/UNIT</u>
Sawtimber			
Mixed Aspen	379.8 MBF	\$ 137.00/MBF	\$ _____
Mixed Oak	53.8 MBF	\$ 117.00/MBF	\$ _____
Red Maple	69.7 MBF	\$ 163.00/MBF	\$ _____
Red Pine	32.3 MBF	\$ 130.00/MBF	\$ _____
White Pine	46.9 MBF	\$ 57.00/MBF	\$ _____
Pulpwood			
Balsam Fir	52 Cords	\$ 41.00/Cord	\$ _____
Black Spruce	21 Cords	\$ 10.45/Cord	\$ _____
Mixed Aspen	1,892 Cords	\$ 22.20/Cord	\$ _____
Mixed Hardwood	1,147 Cords	\$ 17.55/Cord	\$ _____
Mixed Oak	149 Cords	\$ 32.65/Cord	\$ _____
Red Pine	27 Cords	\$ 55.30/Cord	\$ _____
White Pine	172 Cords	\$ 21.45/Cord	\$ _____

*The volumes are statistically estimated within plus (+) or minus (-) 11.62 percent at 95% confidence level. These estimated volumes are final and not subject to adjustment. Prospective bidders are urged to examine this timber and to make their own estimates of quantity and quality.

I understand that any or all bids may be rejected. All bids must be signed and all bid items must be bid or the bid form may be rejected. I also understand that consideration and awarding a contract will be based upon my past performance and ability to complete the contract based upon equipment and staffing subject to my control.

FEDERAL ID: ____ - ____ - ____ or SOCIAL SECURITY NUMBER: ____ - ____ - ____

Company or individual bidding: _____

Company representative's name: _____

Address: _____

City: _____ State: _____ Zip: _____

IF AVAILABLE, PLEASE PLACE THE PERSONALIZED LABEL FROM YOUR PROSPECTUS IN THE ABOVE BOX.

Individual or company representative's signature: _____ Date: _____

Phone number : _____ Email (optional): _____

THE WINNING BIDDER MUST COMPLETE THE VERIFICATION OF WORKER'S DISABILITY COMPENSATION ACT COMPLIANCE (ON REVERSE SIDE IF DOUBLE SIDED) WITHIN 21 DAYS OF SALE AWARD DATE



FOR DEPARTMENT USE ONLY
Sale Number (XX - XXX - XX - XX)
Forest Management Unit:

TIMBER SALE VERIFICATION OF WORKER'S DISABILITY COMPENSATION ACT COMPLIANCE

*As required by Act 317, P.A. 1969 (Worker's Compensation) and
Part 5 of Act 451 of 1994, as amended.*

VERIFICATION OF WORKER'S DISABILITY COMPENSATION ACT COMPLIANCE

- This verification must be completed and submitted within 21 days of contract award and prior to the issuance of the timber sale contract.
- In addition, if boxes 2B or 2C are checked, then Notice of Exclusion or Certificate of Insurance must be submitted within twenty-one (21) days of the contract award and prior to the issuance of the timber sale contract.
- All information must be typed or printed except for written signatures.

Please Check Appropriate Categories:

1. My business is organized as (you **must** check one of the boxes below):
 - A. Sole Proprietorship (individual)
 - B. Partnership
 - C. Corporation
2. You **must** check one of the boxes below:
 - A. I certify my business is a sole proprietorship and it has no employees but the sole proprietor. I am not subject to the Worker's Compensation Laws.
 - B. I certify my business has satisfied its obligation to the Worker's Compensation Act through the use of an approved Notice of Exclusion (BWC-337, Rev. 5/96). I will provide a copy of the Notice of Exclusion within 21 days of the contract award. (For questions or a copy of the BWC-337, please call the Worker's Compensation Bureau at 517-322-1195).
 - C. I certify my business has a Worker's Compensation Policy. I will provide an original Certificate of Insurance within twenty-one (21) days of the contract award.
3. If you have checked item 2(A) or 2(B), you **must** indicate the number of **both** full-time and part-time employees, other than yourself, including family members and active partners (if none, you must enter "0").

_____ Full-time Employees _____ Part-time Employees

Name of Business		Federal ID (or) Social Security No.	
Address		Telephone ()	
City	State	ZIP	

I hereby certify that the above information is true and correct. I agree to notify the Michigan DNR of any changes that occur in factors affecting my coverage during any of my present and future operations.

Signature of Owner or Authorized Representative

Title

Date

Please complete the "SEALED BID" information on the next page

Jellycoat Pine (63-021-25)
T23N, R07W, SEC. 12; T23N, R07W, SEC. 13; Missaukee COUNTY

In response to the notice of sale to be held 3:00 p.m. (local time) on April 29, 2026, I am hereby submitting my sealed bid (firm offer) for the following forest products to be cut. Bids for individual species must be at or above the advertised price. All non-responsive bid forms may be rejected.

<u>PRODUCTS & SPECIES</u>	<u>ESTIMATED VOLUME*</u>	<u>ADVERTISED PRICE</u>	<u>BID PRICE/UNIT</u>
Sawtimber			
Black/Red (Hybrid) Oak	15.2 MBF	\$ 98.00/MBF	\$ _____
Red Maple	34.2 MBF	\$ 136.00/MBF	\$ _____
Red Pine	92.0 MBF	\$ 108.00/MBF	\$ _____
White Pine	8.0 MBF	\$ 47.00/MBF	\$ _____
Pulpwood			
Beech	6 Cords	\$ 14.60/Cord	\$ _____
Black/Red (Hybrid) Oak	53 Cords	\$ 27.20/Cord	\$ _____
Mixed Aspen	62 Cords	\$ 18.50/Cord	\$ _____
Red Maple	204 Cords	\$ 14.60/Cord	\$ _____
Red Pine	991 Cords	\$ 46.10/Cord	\$ _____
White Pine	6 Cords	\$ 17.90/Cord	\$ _____

*The volumes are statistically estimated within plus (+) or minus (-) 19.36 percent at 95% confidence level. These estimated volumes are final and not subject to adjustment. Prospective bidders are urged to examine this timber and to make their own estimates of quantity and quality.

I understand that any or all bids may be rejected. All bids must be signed and all bid items must be bid or the bid form may be rejected. I also understand that consideration and awarding a contract will be based upon my past performance and ability to complete the contract based upon equipment and staffing subject to my control.

FEDERAL ID: _____ or SOCIAL SECURITY NUMBER: _____

Company or individual bidding: _____

Company representative's name: _____

Address: _____

City: _____ State: _____ Zip: _____

IF AVAILABLE, PLEASE PLACE THE PERSONALIZED LABEL FROM YOUR PROSPECTUS IN THE ABOVE BOX.

Individual or company representative's signature: _____ Date: _____

Phone number : _____ Email (optional): _____

THE WINNING BIDDER MUST COMPLETE THE VERIFICATION OF WORKER'S DISABILITY COMPENSATION ACT COMPLIANCE (ON REVERSE SIDE IF DOUBLE SIDED) WITHIN 21 DAYS OF SALE AWARD DATE

Fool Hen Aspen (63-020-25)
T23N, R07W, SEC. 13; T23N, R07W, SEC. 14; Missaukee COUNTY

In response to the notice of sale to be held 3:00 p.m. (local time) on April 29, 2026, I am hereby submitting my sealed bid (firm offer) for the following forest products to be cut. Bids for individual species must be at or above the advertised price. All non-responsive bid forms may be rejected.

<u>PRODUCTS & SPECIES</u>	<u>ESTIMATED VOLUME*</u>	<u>ADVERTISED PRICE</u>	<u>BID PRICE/UNIT</u>
Sawtimber			
Black/Red (Hybrid) Oak	102.4 MBF	\$ 98.00/MBF	\$ _____
Red Maple	79.8 MBF	\$ 136.00/MBF	\$ _____
Red Oak	25.5 MBF	\$ 170.00/MBF	\$ _____
Red Pine	135.6 MBF	\$ 108.00/MBF	\$ _____
Sugar Maple	40.1 MBF	\$ 173.00/MBF	\$ _____
White Pine	70.1 MBF	\$ 47.00/MBF	\$ _____
Pulpwood			
Balsam Fir	214 Cords	\$ 34.20/Cord	\$ _____
Basswood	42 Cords	\$ 10.00/Cord	\$ _____
Black Cherry	86 Cords	\$ 14.60/Cord	\$ _____
Jack Pine	208 Cords	\$ 13.75/Cord	\$ _____
Mixed Aspen	1,583 Cords	\$ 18.50/Cord	\$ _____
Mixed Hardwood	839 Cords	\$ 14.60/Cord	\$ _____
Mixed Oak	387 Cords	\$ 27.20/Cord	\$ _____
Red Pine	128 Cords	\$ 46.10/Cord	\$ _____
Scotch Pine	1 Cords	\$ 21.85/Cord	\$ _____
White Pine	84 Cords	\$ 17.90/Cord	\$ _____

*The volumes are statistically estimated within plus (+) or minus (-) 13.11 percent at 95% confidence level. These estimated volumes are final and not subject to adjustment. Prospective bidders are urged to examine this timber and to make their own estimates of quantity and quality.

I understand that any or all bids may be rejected. All bids must be signed and all bid items must be bid or the bid form may be rejected. I also understand that consideration and awarding a contract will be based upon my past performance and ability to complete the contract based upon equipment and staffing subject to my control.

FEDERAL ID: ____ - ____ - ____ or SOCIAL SECURITY NUMBER: ____ - ____ - ____

Company or individual bidding: _____

Company representative's name: _____

Address: _____

City: _____ State: _____ Zip: _____

IF AVAILABLE, PLEASE PLACE THE PERSONALIZED LABEL FROM YOUR PROSPECTUS IN THE ABOVE BOX.

Individual or company representative's signature: _____ Date: _____

Phone number : _____ Email (optional): _____

THE WINNING BIDDER MUST COMPLETE THE VERIFICATION OF WORKER'S DISABILITY COMPENSATION ACT COMPLIANCE (ON REVERSE SIDE IF DOUBLE SIDED) WITHIN 21 DAYS OF SALE AWARD DATE



FOR DEPARTMENT USE ONLY
Sale Number (XX - XXX - XX - XX)
Forest Management Unit:

TIMBER SALE VERIFICATION OF WORKER'S DISABILITY COMPENSATION ACT COMPLIANCE

*As required by Act 317, P.A. 1969 (Worker's Compensation) and
Part 5 of Act 451 of 1994, as amended.*

VERIFICATION OF WORKER'S DISABILITY COMPENSATION ACT COMPLIANCE

- This verification must be completed and submitted within 21 days of contract award and prior to the issuance of the timber sale contract.
- In addition, if boxes 2B or 2C are checked, then Notice of Exclusion or Certificate of Insurance must be submitted within twenty-one (21) days of the contract award and prior to the issuance of the timber sale contract.
- All information must be typed or printed except for written signatures.

Please Check Appropriate Categories:

1. My business is organized as (you **must** check one of the boxes below):
 - A. Sole Proprietorship (individual)
 - B. Partnership
 - C. Corporation
2. You **must** check one of the boxes below:
 - A. I certify my business is a sole proprietorship and it has no employees but the sole proprietor. I am not subject to the Worker's Compensation Laws.
 - B. I certify my business has satisfied its obligation to the Worker's Compensation Act through the use of an approved Notice of Exclusion (BWC-337, Rev. 5/96). I will provide a copy of the Notice of Exclusion within 21 days of the contract award. (For questions or a copy of the BWC-337, please call the Worker's Compensation Bureau at 517-322-1195).
 - C. I certify my business has a Worker's Compensation Policy. I will provide an original Certificate of Insurance within twenty-one (21) days of the contract award.
3. If you have checked item 2(A) or 2(B), you **must** indicate the number of **both** full-time and part-time employees, other than yourself, including family members and active partners (if none, you must enter "0").

_____ Full-time Employees

_____ Part-time Employees

Name of Business		Federal ID (or) Social Security No.	
Address		Telephone ()	
City	State	ZIP	

I hereby certify that the above information is true and correct. I agree to notify the Michigan DNR of any changes that occur in factors affecting my coverage during any of my present and future operations.

Signature of Owner or Authorized Representative

Title

Date

Please complete the "SEALED BID" information on the next page