



**DEPARTMENT OF NATURAL RESOURCES
STATE OF MICHIGAN
TIMBER SALE PROSPECTUS #7866**

SCHEDULED SALE DATE AND TIME: 3:00 p.m. (local time) on July 1, 2026.

LOCATION: ESCANABA MGMT UNIT, 6833 US-2, 41 & M-35, GLADSTONE, MI 49837.

PROSPECTUS NOTE: The bidder is advised to inspect the sale area and review the location, estimated volumes, operating costs and contract terms of proposed sales. Please be aware that some landowners may request 60 days or more notice for access across their land.

Notice is hereby given that bids will be received by the Unit Manager, CRYSTAL FALLS MANAGEMENT UNIT, for certain timber on the following described lands:

Low Tech Mix 2 (12-001-26) / T44N, R29W, SEC. 19, SENW,W1/2NE,SESW,N1/2SE,SWSE.
T44N, R29W, SEC. 20, N1/2SW,SESW,SE.
T44N, R29W, SEC. 21, W1/2SW.
T44N, R29W, SEC. 30, NENW.

Dickinson County, Advertised Price \$52,651.10, 169.5 Acres, Aspen, Spruce/Fir/Tamarack.

SALE NOTE: It is recommended but not required that Unit 5 is cut during frozen or dry summer conditions due to the lowland soils. Access to Unit 8 will require a temporary stream crossing.

Hunter Harraspén (12-002-26) / T44N, R29W, SEC. 11, S1/2SW,NESE,S1/2SE.
T44N, R29W, SEC. 12, SESW,W1/2SE.
T44N, R29W, SEC. 13, N1/2NW,NE,N1/2SE.
T44N, R29W, SEC. 14, NW,N1/2NE,SWNE,N1/2SW.
T44N, R29W, SEC. 15, SENE,N1/2SE.

Dickinson County, Advertised Price \$139,250.65, 241.6 Acres, Aspen, Hardwood.

SALE NOTE: No harvesting between April 15th and July 15th due to Oak Wilt restrictions.

A recreation site such as a trail, pathway, or campground is within the sale area or the vicinity. Certain restrictions/specifications may be applicable including time restrictions.

BID INSTRUCTIONS (VER. 10/10/2022):

1. Scheduled Bid Location, Date, and Time (2/11)

Bids must be received by the Unit Manager, ESCANABA OFFICE, 6833 US-2, 41 & M-35, Gladstone, MI 49837, no later than 3:00 p.m. (local time) on July 1, 2026. For further information concerning this sale, contact Dan Racine at 906-789-8231.

2. Bidder's Qualifications (10/22)

If all or part of a timber sale was prepared by a private contractor, the contractor and that contractor's company are not permitted to bid on the timber sale. A person must be 18 years of age or older to purchase timber. Permanent employees of the Department of Natural Resources or members of their immediate household may not bid. Former employees, in the permanent or seasonal class, may not bid until 3 months after the last day of active duty. Bids will not be accepted from individuals or companies appearing on the DNR/FRD No-Bid List. This list contains the names of purchasers who previously failed to execute a contract within 21-days or who have a history of poor performance.

3. Preparation of Sealed Bids (5/16)

Bid Forms may be completed online thru Michigan DNR Timber Sale Online Bidding (OLB) at www.michigan.gov/timberbidding or by completing the hardcopy Bid Form found in the Timber Sale Prospectus. Hardcopy Bid Forms shall be manually signed in ink. Registration in OLB is considered your 'signature' for all bids submitted thru that system. Bid prices must be entered for each species and product in the Bid Price column for all material subject to bidding and all fill-in blanks must be completed. If erasures or other changes appear on the hardcopy Bid Form, each erasure or change must be initialed by the person signing the bid.

4. Submission of Sealed Bids (5/16)

Bid forms may be obtained from the Unit Manager or thru OLB. Bids may be submitted hardcopy or thru OLB. All hardcopy bids must be submitted on the bid form and in an envelope clearly identified as described in this section. NOTE: Only one bid form per bid envelope. Sealed bids must be submitted to the Unit office designated in the prospectus and must be submitted at or prior to the time established in the prospectus. The envelope should show on the outside (a) the sale name or number and (b) the date and time of bid opening, as shown in the prospectus. Bids received after the time specified in the sale prospectus are late bids and will be rejected.

It is possible for a bidder to submit multiple bids on a single sale. For example, a bid may be submitted hardcopy and a bid may be submitted thru OLB. Or, two bidders from the same company could both submit bids on the same sale. If this were to happen, the State would accept all bids received and award the contract accordingly. All bidding and contractual requirements would apply to all bids received.

5. Public Opening of Sealed Bids (7/16)

If conditions permit, the sealed bids will be publicly opened and posted at the time and place set in the prospectus.

If a bidder, present at a bid opening, has submitted bids on more than one sale, that bidder may withdraw their unopened bid envelopes or announce the withdrawal of their online bid after being declared the successful bidder on one sale.

6. Award of Contract (1/11)

Award of the contract will be made to the Bidder whose bid, conforming to the prospectus, is most advantageous to the State of Michigan on the basis of total value at rates bid for the estimated quantities. The State reserves the right to reject any bid or waive any minor irregularity in bids received. A written award mailed (or otherwise furnished) to the successful Bidder shall be deemed to result in a binding contract without further action by either party.

7. Down Payment (1/11)

The Bidder to whom award is made must make a down payment within 21 days of the sale award. The amount of the down payment will be calculated as shown in the Bond and Payment Schedule of this prospectus. Only cash may be used to meet this requirement.

8. Performance Security (1/11)

As guarantee of faithful performance, a cash bond, certificate of deposit, surety bond or irrevocable letter of credit (LOC) is required within 21 days of the sale award. The amount of the performance security is shown in the Bond and

Payment Schedule of this prospectus. If an LOC or surety is used, the coverage must extend for at least 6 months beyond the contract expiration.

9. Worker's Compensation (10/22)

Purchaser shall obtain worker's compensation insurance to cover claims under Michigan's Worker's Disability Compensation Act of 1969 or similar employee benefit act of any other state applicable to an employee. Verification of Worker's Disability Compensation Act Compliance must be completed and submitted within 21 days of contract award and prior to the issuance of the timber sale contract. In addition, if applicable, Notice of Exclusion or Certificate of Insurance must also be submitted.

10. Timber Sale Contract (10/22)

Additional conditions and requirements common to all timber sales are listed on the timber sale contract (R4031) and are available on line at www.michigan.gov/timber. Contact the Unit Manager for additional information or a sample contract. Within 21 days of the date of the award letter, the bidder must sign the contract and provide the required down payment, performance security, and verification of worker's disability compensation. The down payment and performance security shall be in accordance with the provisions of the timber sale contract, in the sums stated in this prospectus. If these actions are not taken, then the Bidder, the Bidder's corporation, and the corporation's principals may not be permitted to bid on State timber sales for a period of 3 months after the first offense, 6 months after the second offense, and 1 year after the third offense. An offense will only be counted against the Bidder for 5 years. In addition, the Bidder certifies that if awarded this contract, the Bidder will complete the timber sale contract in accordance with its terms and any modifications thereof including requirements to purchase, cut, and remove the included timber by the expiration date.

Payment Unit values in the State Forest Timber Sale Contract are calculated based on the advertised value of the Payment Unit as a percentage of the total advertised value of the contract. The advertised value of each Payment Unit is given in the Description of Timber by Payment Unit table on the Timber Sale Information page. For example, if the value of Payment Unit 1 is advertised as \$1,500 and the total Timber Sale value is advertised as \$10,000, the contract price for Payment Unit 1 will be 15% of the total bid price ($\$1,500/\$10,000 * 100$).

11. Disclaimer of Estimates and Bidder's Warranty of Inspection (10/22)

Before submitting this bid, the Bidder is advised and cautioned to inspect the sale area, review the requirements of the sale contract, and take other steps as may be reasonably necessary to ascertain the location, estimated volumes, construction estimates, and operating costs of the proposed sale. Failure to do so will not relieve the Bidder from responsibility for completing the contract.

The Bidder warrants that this bid is submitted solely on the basis of the Bidder's examination and inspection of the quality and quantity of the timber offered for sale and the Bidder's opinion of the value thereof and the costs of recovery. No reliance should be placed on the State of Michigan's estimates of timber quality, quantity or costs of recovery. Bidder further acknowledges that the State of Michigan: (i) expressly disclaims any warranty of fitness of timber for any purpose; (ii) offers this timber as is without any warranty of quality (merchantability) or quantity and (iii) expressly disclaims any warranty as to the quantity or quality of timber sold.

12. Certification and Chain-of-Custody (10/22)

Unless otherwise indicated in the contract under section 7 – Other Conditions of the Sale Specific Conditions & Requirements, the area encompassed by this timber sale is certified to the standards of the Forest Stewardship Council (FSC) - Certificate #SCS-FM/COC-00090N and the Sustainable Forestry Initiative (SFI) - Certificate #NSF-SFIS-5Y031-SF5. Forest products from this sale may be delivered to the mill as "FSC 100% and / or SFI certified" as long as the contractor hauling the forest products is chain-of-custody (COC) certified or covered under a COC certificate from the destination mill. The purchaser is responsible for maintaining COC after leaving the sale area.

13. Good Neighbor Authority (GNA) Requirements (10/22)

If the name of this timber sales contains the acronym GNA, it is authorized by the Good Neighbor Authority (GNA) and covered by various agreements between the U.S. Forest Service and the State. The timber sale occurs on federal land and the following conditions apply:

GNA contracts on US Forest Service land will not be awarded to purchasers on the Federal list of excluded parties. The System for Award Management (SAM) will be checked for active excluded parties prior to award of contract. In

addition, the Bidder to whom award is made must complete an Assurance Regarding Felony Conviction or Tax Delinquent Status for Corporate Applicants (AD-3031).

14. Good Neighbor Authority (GNA) Requirements, con't (10/22)

Bidder certifies, by signing this bid form, that to the best of Bidder's knowledge that the following representations are accurate and complete.

- a. That the Bidder and its principals are not presently debarred, suspended, proposed for debarment, declared ineligible, or voluntary excluded from timber sales (covered transactions) by any Federal department or agency.
- b. That the Bidder and its principals have not within a 3-year period preceding this bid been convicted of or had a civil judgment rendered against them for commission of fraud or a criminal offense in connection with obtaining, attempting to obtain, or performing a public (Federal, State, or local) transaction or contract under a public transaction; violation of Federal or State antitrust statutes or commission of embezzlement, theft, forgery, bribery, falsification or destruction of records, making false statements, or receiving stolen property.
- c. That the Bidder and its principals are not presently indicted for or otherwise criminally or civilly charged by a governmental entity (Federal, State, or local) with commission of any of the offenses enumerated in paragraph b of this certification.
- d. That the Bidder and its principals have not within a 3-year period preceding this bid had one or more public transactions (Federal, State, or local) terminated for breach or default of a timber or forest product contract.

Bidders that cannot certify this requirement, in whole or in part, shall submit an explanation with their bid.

Scott Bowen
Director

TIMBER SALE INFORMATION

Low Tech Mix 2 (12-001-26)

T44N, R29W, SEC. 19; T44N, R29W, SEC. 20; T44N, R29W, SEC. 21; T44N, R29W, SEC. 30.
Dickinson County (Advertised Price \$52,651.10)

SALE NOTE: It is recommended but not required that Unit 5 is cut during frozen or dry summer conditions due to the lowland soils. Access to Unit 8 will require a temporary stream crossing.

A timber sale contract for this lump sum, sealed bid timber sale will be awarded to the responsible bidder offering the highest sealed bid price. All units of volume listed below were estimated using the Inventory Manager computer program and the new Michigan taper model. Bids must be at or above the following advertised price for each product and species:

<u>PRODUCTS & SPECIES</u>	<u>ESTIMATED UNITS*</u>	<u>ADVERTISED PRICE</u>
Sawtimber		
Paper Birch	28.1 MBF	\$ 78.00 / MBF
Red Pine	94.4 MBF	\$ 90.00 / MBF
Pulpwood		
Balsam Fir	62 Cords	\$ 4.00 / Cord
Jack Pine	19 Cords	\$ 21.10 / Cord
Mixed Aspen	1,501 Cords	\$ 14.20 / Cord
Mixed Hardwood	295 Cords	\$ 8.60 / Cord
Mixed Spruce	856 Cords	\$ 5.80 / Cord
Red Pine	227 Cords	\$ 52.70 / Cord
Tamarack	90 Cords	\$ 5.95 / Cord

* The total volume is statistically estimated within plus (+) or minus (-) 13.22 percent. There are an estimated 3,338 cords on this timber sale, plus or minus 441 cords at the 95% confidence level. The estimated units are final and not subject to adjustment. Prospective bidders are urged to examine this timber and to make their own estimates of quantity and quality.

BOND AND PAYMENT SCHEDULE:

1. A bond in the amount of \$2,633.00 to insure faithful performance of the conditions of the contract will be deposited by the successful bidder within 21 days of the sale award.
2. Cutting in any sale or unit without the required advance payment would be considered a trespass.
3. Total payment must be paid in advance or according to the following schedule :
 - (a) Ten percent (10%) of the sale value must be paid within 21 days of the sale award.
 - (b) The 10% down payment will be credited towards the first unit cut.
 - (c) Payment for each of the following units must be made before cutting begins in that unit:

PAYMENT UNIT NUMBER	PERCENT OF TOTAL SALE VALUE
01	7.6%
02	18.3%
03	16.0%
04	11.4%
05	6.8%
06	13.6%
07	15.9%
08	10.4%
4. If no cutting takes place, the 10% down payment will not be refunded.
5. Operations on the contract issued will terminate on 06/30/2030.

SALE STATISTICS

Volumes were calculated in cubic feet using the Michigan taper model. Cubic foot volume includes all wood inside bark for the product indicated. For display purposes, cubic feet were converted to cords and MBF using a simple conversion factor, e.g. 79 cubic feet per cord and 185 cubic feet per MBF. The cubic foot volumes are precise; the cords and MBF volumes are not. Cubic foot volume cannot be directly converted to cords or boards with precision.

SALE VOLUMES

The total estimated sale volume may not equal the sum of the species/products due to the nature of statistical calculations associated with double sampling methodology.

VOLUME			STATISTICAL RANGE IN CORDS	
TOTAL CUBIC FEET	TOTAL CORDS	PERCENT ERROR	MINIMUM	MAXIMUM
263,712	3,338	13.22%	2,897	3,780

VDU VOLUMES

A VDU is a Volume Determination Unit. Volumes and their associated statistics are calculated at the VDU level and summarized to the sale level. There is often a one to one relationship between a VDU and a Payment Unit, but not always, depending on the cruise design. Refer to the VDU TO PAYMENT UNIT table.

	VOLUME			RANGE IN CORDS	
VDU	TOTAL CUBIC FEET	TOTAL CORDS	PERCENT ERROR	MINIMUM	MAXIMUM
4	24,362	308	52.07%	148	469
27	42,832	542	30.44%	377	707
31	58,406	739	30.87%	511	968
40	13,719	174	30.71%	120	227
45	13,874	176	28.32%	126	225
50	11,956	151	60.81%	59	243
56	98,562	1,248	23.86%	950	1,545
TOTAL:	263,712	3,338		2,292	4,385

VDU TO PAYMENT UNIT

When a VDU is associated with more than one Payment Unit (PU), the VDU volumes are assigned to the PU based on acres of the VDU within the PU.

VDU	VDU ACRES	PU	PU ACRES
TOTAL:			

DESCRIPTION OF TIMBER BY PAYMENT UNIT (PU)

PU	MARKET GROUP	PRODUCT	QUANTITY	UNIT	ACRES	ADVERTISE PRICE
1	Balsam Fir	Pulpwood	10	Cords	15.3	\$3,990.60
	Jack Pine		10	Cords		
	Mixed Aspen		237	Cords		
	<i>Quaking Aspen</i>		237	Cords		
	Mixed Hardwood		28	Cords		
	<i>Balsam Poplar</i>		24	Cords		
	<i>Black Cherry</i>		4	Cords		
	Mixed Spruce		23	Cords		
	<i>Black Spruce</i>		16	Cords		
	<i>White Spruce</i>		7	Cords		
2	Paper Birch	Sawtimber	7.3	MBF	30.5	\$9,626.40
	Balsam Fir	Pulpwood	20	Cords		
	Mixed Aspen		548	Cords		
	<i>B. T. Aspen</i>		28	Cords		
	<i>Quaking Aspen</i>		520	Cords		
	Mixed Hardwood		110	Cords		
	<i>Red Maple</i>		7.8	MBF		
	<i>Black Cherry</i>		6	Cords		
	<i>Paper Birch</i>		28	Cords		
	<i>Red Maple</i>		60	Cords		
	Mixed Spruce		43	Cords		
	<i>Black Spruce</i>		43	Cords		
3	Paper Birch	Sawtimber	11.2	MBF	39.2	\$8,430.20
	Balsam Fir	Pulpwood	13	Cords		
	Mixed Aspen		389	Cords		
	<i>Quaking Aspen</i>		389	Cords		
	Mixed Hardwood		86	Cords		
	<i>Red Maple</i>		0.8	MBF		
	<i>Balsam Poplar</i>		13	Cords		
	<i>Paper Birch</i>		48	Cords		
	<i>Red Maple</i>		23	Cords		
	Mixed Spruce		214	Cords		
	<i>Black Spruce</i>		173	Cords		
	<i>White Spruce</i>		41	Cords		
4	Paper Birch	Sawtimber	7.9	MBF	27.9	\$6,004.40
	Balsam Fir	Pulpwood	10	Cords		
	Mixed Aspen		277	Cords		
	<i>Quaking Aspen</i>		277	Cords		
	Mixed Hardwood		62	Cords		
	<i>Red Maple</i>		0.6	MBF		
	<i>Balsam Poplar</i>		9	Cords		
	<i>Paper Birch</i>		35	Cords		
	<i>Red Maple</i>		17	Cords		
	Mixed Spruce		152	Cords		
	<i>Black Spruce</i>		123	Cords		
	<i>White Spruce</i>		29	Cords		
5	Balsam Fir	Pulpwood	9	Cords	21.2	\$3,569.40
	Jack Pine		9	Cords		
	Mixed Aspen		34	Cords		
	<i>Quaking Aspen</i>		34	Cords		
	Mixed Spruce		405	Cords		
	<i>Black Spruce</i>		405	Cords		
	Tamarack		86	Cords		
6	Red Pine	Sawtimber	55.6	MBF	14.5	\$7,176.30
	Mixed Spruce	Pulpwood	2	Cords		
	<i>Black Spruce</i>		2	Cords		

DESCRIPTION OF TIMBER BY PAYMENT UNIT (PU), CON'T

PU	MARKET GROUP	PRODUCT	QUANTITY	UNIT	ACRES	ADVERTISE PRICE
6 con't	Red Pine	Pulpwood	41	Cords		
7	Red Pine	Sawtimber	7.6	MBF	9.7	\$8,354.60
	Mixed Spruce	Pulpwood	10	Cords		
	<i>Black Spruce</i>		10	<i>Cords</i>		
	Red Pine		144	Cords		
	Tamarack		4	Cords		
8	Paper Birch	Sawtimber	1.7	MBF	11.2	\$5,499.20
	Red Pine		31.2	MBF		
	Mixed Aspen	Pulpwood	16	Cords		
	<i>Quaking Aspen</i>		16	<i>Cords</i>		
	Mixed Hardwood		9	Cords		
	<i>Paper Birch</i>		9	<i>Cords</i>		
	Mixed Spruce		7	Cords		
	<i>Black Spruce</i>		7	<i>Cords</i>		
	Red Pine		42	Cords		
TOTAL:			122.5	MBF		
TOTAL:			3,050	Cords		

Sale Specific Conditions & Requirements

Sale Name: Low Tech Mix 2

Sale Number: 12-001-26 Seq#: 1

1 - Sale Area

1.2 - Boundaries

1.2.1 - Painted Boundaries (9/19)

The sale boundary and Payment Unit boundaries are marked and identified by blue and red paint. Exterior sale boundary lines against private property are marked with blue paint. Exterior sale boundary lines against state are marked with red paint. Interior Payment Unit boundaries are marked with red slashes. The painted boundary line trees are not Included Timber and are to be protected. Trees marked with red slashes, designating an interior Payment Unit boundary, are only to be cut when all surrounding Payment Units have been paid.

2 - Timber Specifications

2.1 - Included Timber

2.1.1 - Clearcut Unit(s) with Unmerchantable Trees (6/14)

Within Payment Unit(s) 1-4, cut all aspen and mixed hardwood trees that are two (2) inches or more at DBH, except oak and within Payment Units 3 and 4 leave one, two stick or greater aspen or birch tree per acre. In addition, cut the following trees in the designated Payment Units:

- Within Payment Units 1-4, cut all spruce, balsam, tamarack, and jack pine with two or more pulpwood sticks,
- Within Payment Unit 2, cut red pine marked with orange paint,
- Within Payment Unit 5, cut all trees with one or more pulpwood stick, except do not cut cedar, hemlock, oak, red pine, or white pine.

2.1.3 - Cut Tree Marked Unit(s) (12/08)

Within Payment Unit(s) 7 and 8, all trees are designated for cutting when marked with orange paint above and below stump height, regardless of merchantability. In addition to trees marked with orange paint, cut all spruce, balsam, tamarack, jack pine, and aspen with two or more pulpwood stick. Leave all large aspen marked with green paint.

2.1.7 - Leave Tree Marked Unit(s) (6/14)

Within Payment Unit(s) 6, cut all red pine, jack pine, spruce, balsam, aspen, and maple trees that have two 100" sticks or more, except red pine trees marked with green paint above and below stump height. No white pine, red pine marked with green paint, cedar, hemlock, or oak will be cut.

3 - Payments

3.4 - Damaged Timber

3.4.3 - Special Protection Areas (8/11)

The Purchaser shall protect special protection areas from damage by the Purchaser's operations. Special protection areas are pockets of red pine saplings. If the Purchaser's operations have cut or damaged special protection areas through carelessness, the Purchaser shall pay \$100 as fixed, agreed, and liquidated damages for each acre or part thereof cut or damaged. Such payment does not constitute ownership of the undesignated timber.

4 - Transportation

4.1 - Construction

4.1.1 - Stream Crossings, General (1/25)

All stream crossing structures will be temporary and, therefore, shall be provided by the Purchaser and must be removed upon completion of the sale. All permits for stream crossings will be provided by the purchaser.

4.1.6 - Road Construction (4/24)

Construction of new roads or improvements of existing roads shall be done in such a way as to minimize the environmental and visual impacts. Merchantable trees shall be cut and utilized unless otherwise directed. Non-merchantable trees shall be severed and laid flat on the ground. Slash shall be scattered, not left in windrows, and kept a minimum of 10 feet back from the road edge, be chipped, utilized or otherwise removed from the sale. Stumps shall be set upright, not left on edge, and be

moved at least 10 feet away from the road edge. Disturbed soil shall be feathered into the woods and not left in berms or windrows.

4.1.7 - Road Closure (10/11)

All new roads built into the sale must be blocked to vehicle traffic upon completion of the sale. Overgrown roads that are reopened shall be considered new roads. In general, this will require constructing a four (4') foot high berm of stumps and logs covered with earth. Contact the sale administrator for specific details of design and placement.

5 - Operations

5.2 - Conduct of Operations

5.2.1 - Slash

5.2.1.8 - Slash Height (12/08)

No slash may exceed 36 inches in height.

5.2.22 - Operating Caution

5.2.22.1 - Operating Caution (6/11)

It is recommended, but not required, that within Payment Unit(s) 5, cutting and skidding occur during dry summer or frozen winter conditions. The reason for the recommendation is because of seasonally wet conditions.

5.4 - Soil Protection

5.4.1 - Rutting Restriction, General (7/16)

Operations are to cease immediately if equipment and weather conditions result in rutting of roads and/or skid trails which is 12 inches or greater in depth and 50 feet in length. The Unit Manager or his/her representative may restrict hauling and/or skidding if ruts exceed the specified depth. With the Unit Manager or his/her representative's approval, the Purchaser may return to the area when the risk of rutting has decreased.

5.8 - Protection of Endangered Species

5.8.5 - Protection of Raptor Nests (3/13)

All trees with raptor nests will be protected if found during harvesting operations. Notification will be made to the Unit Manager or his/her representative who will notify the Wildlife Biologist so an onsite evaluation and recommendation can be made, if necessary.

6 - Safety and Fire Prevention

6.2 - Signing

6.2.1 - Road Posting (10/20)

The Purchaser is responsible for posting and maintaining caution signs on Two Mile Creek and Weber Creek Roads prior to beginning operations. The road must be posted approximately 350 feet from the Sale Area to warn of logging activity and truck traffic. Signs must be removed when harvest operations are suspended or completed. The Purchaser will provide these signs.



TIMBER SALE MAP

This information provided by authority of Part 525, 1994 PA 451, as amended.

Sale Number	Year
12-001-26	2026

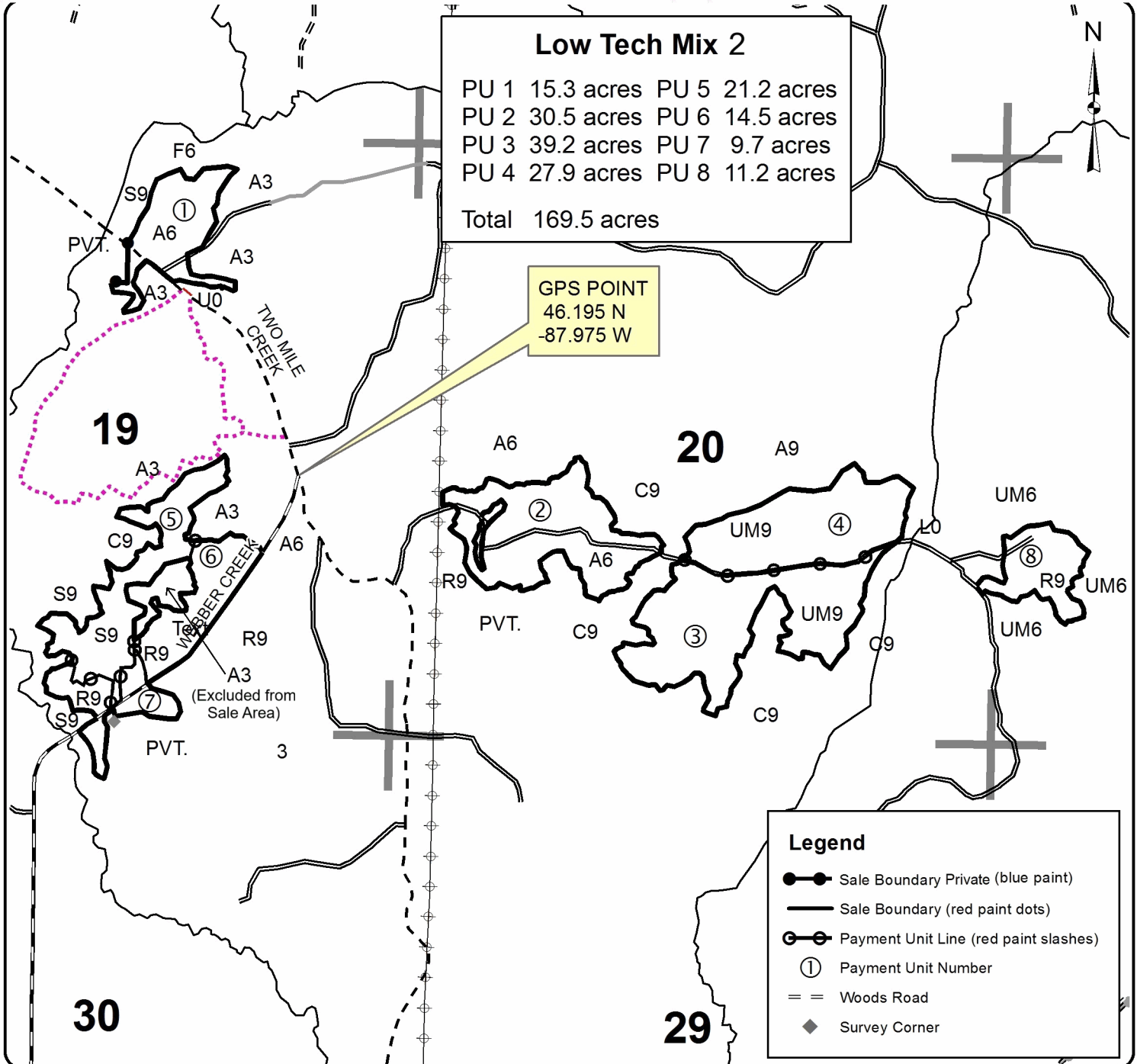
Forest Management Unit Crystal Falls	County Dickinson	Mapped By Scott Sebero	Date 02/09/2022	Page 1	of 1
Township 44N	Range 29W	Section(s) and Subdivision(s) 19 SENW,W1/2NE,SESW,N1/2SE,SWSE 20 N1/2SW,SESW,SE 21 W1/2SW 30 NENW	Scale 4 inches = 1 mile		
Cruised By Scott Sebero					

Cover Type

A = Aspen	H = Hemlock	N = Marsh	U = Upland Brush
B = Paper Birch	J = Jack Pine	O = Oak	UM = Upland Mixed
C = Cedar	L = Lowland Brush	P = Lowland Poplar	V = Bog or Marsh
D = Tread Bog	LM = Lowland Mixed	Q = Mixed Swamp Conifer	W = White Pine
E = Swamp Hdwoods	M = Mpl, Bch, Brch	R = Red Pine	X = Non Stocked
F = Spruce Fir	MC = Mixed Conifer	S = Black Spruce	Z = Water
G = Grass	MD = Mixed Deciduous	T = Tamarack	

Density

0 = Non Stocked	5 = Pole Timber Medium
1 = Seedling Sapling Poor	6 = Pole Timber Well
2 = Seedling Sapling Medium	7 = Saw Timber Poor
3 = Seedling Sapling Well	8 = Saw Timber Medium
4 = Pole Timber Poor	9 = Saw Timber Well



TIMBER SALE INFORMATION

Hunter Harraspen (12-002-26)

T44N, R29W, SEC. 11; T44N, R29W, SEC. 12; T44N, R29W, SEC. 13; T44N, R29W, SEC. 14; T44N, R29W, SEC. 15.
Dickinson County (Advertised Price \$139,250.65)

SALE NOTE: No harvesting between April 15th and July 15th due to Oak Wilt restrictions.

A recreation site such as a trail, pathway, or campground is within the sale area or the vicinity. Certain restrictions/specifications may be applicable including time restrictions.

A timber sale contract for this lump sum, sealed bid timber sale will be awarded to the responsible bidder offering the highest sealed bid price. All units of volume listed below were estimated using the Inventory Manager computer program and the new Michigan taper model. Bids must be at or above the following advertised price for each product and species:

<u>PRODUCTS & SPECIES</u>	<u>ESTIMATED UNITS*</u>	<u>ADVERTISED PRICE</u>
Sawtimber		
Red Maple	16.7 MBF	\$ 155.00 / MBF
Red Oak	74.8 MBF	\$ 133.00 / MBF
Sugar Maple	11.1 MBF	\$ 295.00 / MBF
Pulpwood		
Mixed Hardwood	899 Cords	\$ 11.75 / Cord
Quaking Aspen	5,711 Cords	\$ 19.40 / Cord
Red Oak	156 Cords	\$ 13.35 / Cord

* The total volume is statistically estimated within plus (+) or minus (-) 11.25 percent. There are an estimated 7,008 cords on this timber sale, plus or minus 789 cords at the 95% confidence level. The estimated units are final and not subject to adjustment. Prospective bidders are urged to examine this timber and to make their own estimates of quantity and quality.

BOND AND PAYMENT SCHEDULE:

1. A bond in the amount of \$6,963.00 to insure faithful performance of the conditions of the contract will be deposited by the successful bidder within 21 days of the sale award.
 2. Cutting in any sale or unit without the required advance payment would be considered a trespass.
 3. Total payment must be paid in advance or according to the following schedule :
 - (a) Ten percent (10%) of the sale value must be paid within 21 days of the sale award.
 - (b) The 10% down payment will be credited towards the first unit cut.
 - (c) Payment for each of the following units must be made before cutting begins in that unit:
- | PAYMENT UNIT NUMBER | PERCENT OF TOTAL SALE VALUE |
|---------------------|-----------------------------|
| 01 | 16.1% |
| 02 | 6.0% |
| 03 | 6.6% |
| 04 | 9.6% |
| 05 | 9.1% |
| 06 | 29.4% |
| 07 | 23.2% |
4. If no cutting takes place, the 10% down payment will not be refunded.
 5. Operations on the contract issued will terminate on 06/30/2030.

SALE STATISTICS

Volumes were calculated in cubic feet using the Michigan taper model. Cubic foot volume includes all wood inside bark for the product indicated. For display purposes, cubic feet were converted to cords and MBF using a simple conversion factor, e.g. 79 cubic feet per cord and 185 cubic feet per MBF. The cubic foot volumes are precise; the cords and MBF volumes are not. Cubic foot volume cannot be directly converted to cords or boards with precision.

SALE VOLUMES

The total estimated sale volume may not equal the sum of the species/products due to the nature of statistical calculations associated with double sampling methodology.

VOLUME		STATISTICAL RANGE IN CORDS		
TOTAL CUBIC FEET	TOTAL CORDS	PERCENT ERROR	MINIMUM	MAXIMUM
553,615	7,008	11.25%	6,219	7,796

VDU VOLUMES

A VDU is a Volume Determination Unit. Volumes and their associated statistics are calculated at the VDU level and summarized to the sale level. There is often a one to one relationship between a VDU and a Payment Unit, but not always, depending on the cruise design. Refer to the VDU TO PAYMENT UNIT table.

VDU	VOLUME		PERCENT ERROR	RANGE IN CORDS	
	TOTAL CUBIC FEET	TOTAL CORDS		MINIMUM	MAXIMUM
33	26,763	339	39.88%	204	474
40	223,543	2,830	18.04%	2,319	3,340
51	303,310	3,839	15.49%	3,245	4,434
TOTAL:	553,615	7,008		5,768	8,248

VDU TO PAYMENT UNIT

When a VDU is associated with more than one Payment Unit (PU), the VDU volumes are assigned to the PU based on acres of the VDU within the PU.

VDU	VDU ACRES	PU	PU ACRES
TOTAL:			

DESCRIPTION OF TIMBER BY PAYMENT UNIT (PU)

PU	MARKET GROUP	PRODUCT	QUANTITY	UNIT	ACRES	ADVERTISE PRICE
1	Red Maple	Sawtimber	1.1	MBF	54.2	\$22,391.20
	Sugar Maple		3.9	MBF		
	Mixed Hardwood	Pulpwood	228	Cords		
	<i>Balsam Poplar</i>		54	Cords		
	<i>Ironwood</i>		4	Cords		
	<i>Paper Birch</i>		2	Cords		
	<i>Red Maple</i>		49	Cords		
	<i>Sugar Maple</i>		119	Cords		
	Quaking Aspen		948	Cords		
2	Red Maple	Sawtimber	0.4	MBF	20.2	\$8,321.95
	Sugar Maple		1.4	MBF		
	Mixed Hardwood	Pulpwood	85	Cords		
	<i>Balsam Poplar</i>		21	Cords		
	<i>Ironwood</i>		1	Cords		
	<i>Paper Birch</i>		1	Cords		
	<i>Red Maple</i>		18	Cords		
	<i>Sugar Maple</i>		44	Cords		
	Quaking Aspen		353	Cords		
3	Red Maple	Sawtimber	0.4	MBF	22.2	\$9,177.45
	Sugar Maple		1.6	MBF		
	Mixed Hardwood	Pulpwood	95	Cords		
	<i>Balsam Poplar</i>		23	Cords		
	<i>Ironwood</i>		2	Cords		
	<i>Paper Birch</i>		1	Cords		
	<i>Red Maple</i>		20	Cords		
	<i>Sugar Maple</i>		49	Cords		
	Quaking Aspen		388	Cords		
4	Red Maple	Sawtimber	0.7	MBF	32.4	\$13,384.80
	Sugar Maple		2.3	MBF		
	Mixed Hardwood	Pulpwood	136	Cords		
	<i>Balsam Poplar</i>		33	Cords		
	<i>Ironwood</i>		2	Cords		
	<i>Paper Birch</i>		1	Cords		
	<i>Red Maple</i>		29	Cords		
	<i>Sugar Maple</i>		71	Cords		
	Quaking Aspen		567	Cords		
5	Red Oak	Sawtimber	74.8	MBF	8.2	\$12,626.75
	Sugar Maple		1.9	MBF		
	Mixed Hardwood	Pulpwood	3	Cords		
	<i>Sugar Maple</i>		3	Cords		
	Red Oak		156	Cords		
6	Red Maple	Sawtimber	7.9	MBF	58.5	\$41,097.65
	Mixed Hardwood	Pulpwood	197	Cords		
	<i>Paper Birch</i>		3	Cords		
	<i>Red Maple</i>		153	Cords		
	<i>Sugar Maple</i>		41	Cords		
	Quaking Aspen		1,936	Cords		
7	Red Maple	Sawtimber	6.2	MBF	45.9	\$32,250.85
	Mixed Hardwood	Pulpwood	155	Cords		
	<i>Paper Birch</i>		3	Cords		
	<i>Red Maple</i>		119	Cords		
	<i>Sugar Maple</i>		33	Cords		
	Quaking Aspen		1,519	Cords		
TOTAL:			102.6	MBF		

TOTAL:	6,766	Cords
--------	-------	-------

Sale Specific Conditions & Requirements

Sale Name: Hunter Harraspen

Sale Number: 12-002-26 Seq#: 1

1 - Sale Area

1.2 - Boundaries

1.2.1 - Painted Boundaries (9/19)

The sale boundary and Payment Unit boundaries are marked and identified by red paint. Exterior sale boundary lines against state are marked with red paint. The painted boundary line trees are not Included Timber and are to be protected.

2 - Timber Specifications

2.1 - Included Timber

2.1.1 - Clearcut Unit(s) with Unmerchantable Trees (6/14)

Within Payment Unit(s) 1-4, 6 & 7, cut all trees that are four (4) inches or more at DBH, except basswood, oak, cherry and all conifers.

Within Payment Unit 5, cut all trees two (2) inches or more at DBH.

3 - Payments

3.3 - Pre-measured Sales

3.3.4 - Dividing Payment Units (7/14)

Payment Unit(s) 1, 6 or 7 may be divided at the request of the Purchaser and upon approval of the Unit Manager. Dividing Payment Units is a contract modification which requires a Timber Sale Contract Amendment. There will be only one division per Payment Unit.

4 - Transportation

4.1 - Construction

4.1.6 - Road Construction (4/24)

Construction of new roads or improvements of existing roads shall be done in such a way as to minimize the environmental and visual impacts. Merchantable trees shall be cut and utilized unless otherwise directed. Non-merchantable trees shall be severed and laid flat on the ground. Slash shall be scattered, not left in windrows, and kept a minimum of 10 feet back from the road edge. Stumps shall be set upright, not left on edge, and be moved at least 5 feet away from the road edge.

Disturbed soil shall be feathered into the woods and not left in berms or windrows.

4.1.7 - Road Closure (10/11)

All new roads built into the sale must be blocked to vehicle traffic upon completion of the sale. Overgrown roads that are reopened shall be considered new roads. In general, this will require constructing a four (4') foot high berm of stumps and logs covered with earth. These roads must be rendered impassable to cars and trucks. Contact the Sale Administrator for specific details of design and placement.

4.2 - Maintenance

4.2.4 - Grading (10/16)

For completion of the sale, state forest roads must be graded. In general, this will require a road grader or bulldozer to shape up the roads after forest products have been hauled off site. This includes cleaning of drainage areas, grading, crowning and filling with gravel, if necessary. The grading equipment to be used must be approved by the Unit Manager or his/her representative.

4.4 - Access

4.4.3 - Access gate (12/08)

There is a locked gate to access Units 6 & 7. Sale administrator will provide access when operations begin. The access gate must be closed at the completion of each day unless otherwise approved by the Unit Manager or his/her representative.

5 - Operations

5.2 - Conduct of Operations

5.2.3 - Operating Restrictions

5.2.3.4 - Oak Wilt Restriction, No Exceptions (1/18)

Within ALL Payment Unit(s) cutting, skidding, hauling within the sale and brushing of access roads to the sale are not permitted during the period of April 15 to July 15. No exceptions will be granted. This is necessary to reduce the spread of oak wilt.

5.2.41 - Snowmobile Trail Protection (9/11)

The Big Wheel road is also a snowmobile trail and is shown on the Timber Sale Map. Do not cut or damage posts with orange trail markers or traffic control signs. If the trail is used, it must be maintained and restored to a condition equal to or better than before the sale. The road maintenance/restoration must be done prior to December 1. If the trail is used for hauling, it must be graded to the satisfaction of the Unit Manager or his/her representative prior to December 1. If the trail road is to be used for hauling during the snowmobile season, then a snow-covered base must be left on the trail. Maintain a 20-foot-wide slash, debris, and rut free zone daily using the snowmobile trail as the centerline. No decking of forest products will be permitted along the snowmobile trail. All stumps within 10 feet of the snowmobile trail must be cut at ground level.

5.2.43 - Opening Protection (2/21)

The road accessing Units 6 and 7 is a hunter walking trail. If harvesting operations impact the hunter walking trail, the purchaser is required to replant these areas.

5.4 - Soil Protection

5.4.1 - Rutting Restriction, General (7/16)

Operations are to cease immediately if equipment and weather conditions result in rutting of roads and/or skid trails which are 12 inches or greater in depth and 50 feet in length. The Unit Manager or his/her representative may restrict hauling and/or skidding if ruts exceed the specified depth. With the Unit Manager or his/her representative's approval, the Purchaser may return to the area when the risk of rutting has decreased.

6 - Safety and Fire Prevention

6.2 - Signing

6.2.2 - Snowmobile Trail Posting (10/20)

The Purchaser is responsible for posting and maintaining caution signs on Big Wheel Road and roads that intersect with the snowmobile trail (O'Neill Lake Rd/Two Mile Ck Rd). prior to beginning operations during the snowmobile season (approximately December 1 to March 31). The trail must be posted at appropriate distances from the Sale Area to warn of logging activity and truck traffic. Signs must be removed when harvest operations are suspended or completed. The Purchaser will provide these signs.



TIMBER SALE MAP

This information provided by authority of Part 525, 1994 PA 451, as amended.

Sale Number

12-002-26

Date

01/30/2026

Forest Management Unit

County

Mapped By: Andy Church

Scale

Page

Of

Crystal Falls Mgt Unit

Dickinson

Cruised By: Andy Church

1:20,000

1

1

Township
44N

Range
29W

Section(s) and NW,N1/2NE,SWNE,N1/2SW; Sec. 15 SENE,N1/2SE;
Subdivision(s) Sec. 11 S1/2SW,NESE,S1/2SE; Sec. 12 SESW,W1/2SE; Sec. 13 N1/2NW,NE,N1/2SE; Sec. 14

Cover Type

A = Aspen	J = Jack Pine	O = Oak	U = Upland Brush
B = Paper Birch	K = Rock	P = Lowland Poplar	UM = Upland Mix Forest
C = Cedar	L = Lowland Brush	Q = Mixed Swamp Conifer	V = Bog or Marsh
D = Treed Bog	LM = Lowland Mix Forest	R = Red Pine	W = White Pine
E = Swamp Hardwoods	M = Maple, Beech, Birch	S = Black Spruce	X = Non Stocked
F = Spruce/Fir	MC = Mixed Conifer	T = Tamarack	Y = Sand
G = Grass	MD = Mixed Deciduous	Z = Water	
H = Hemlock	N = Marsh		

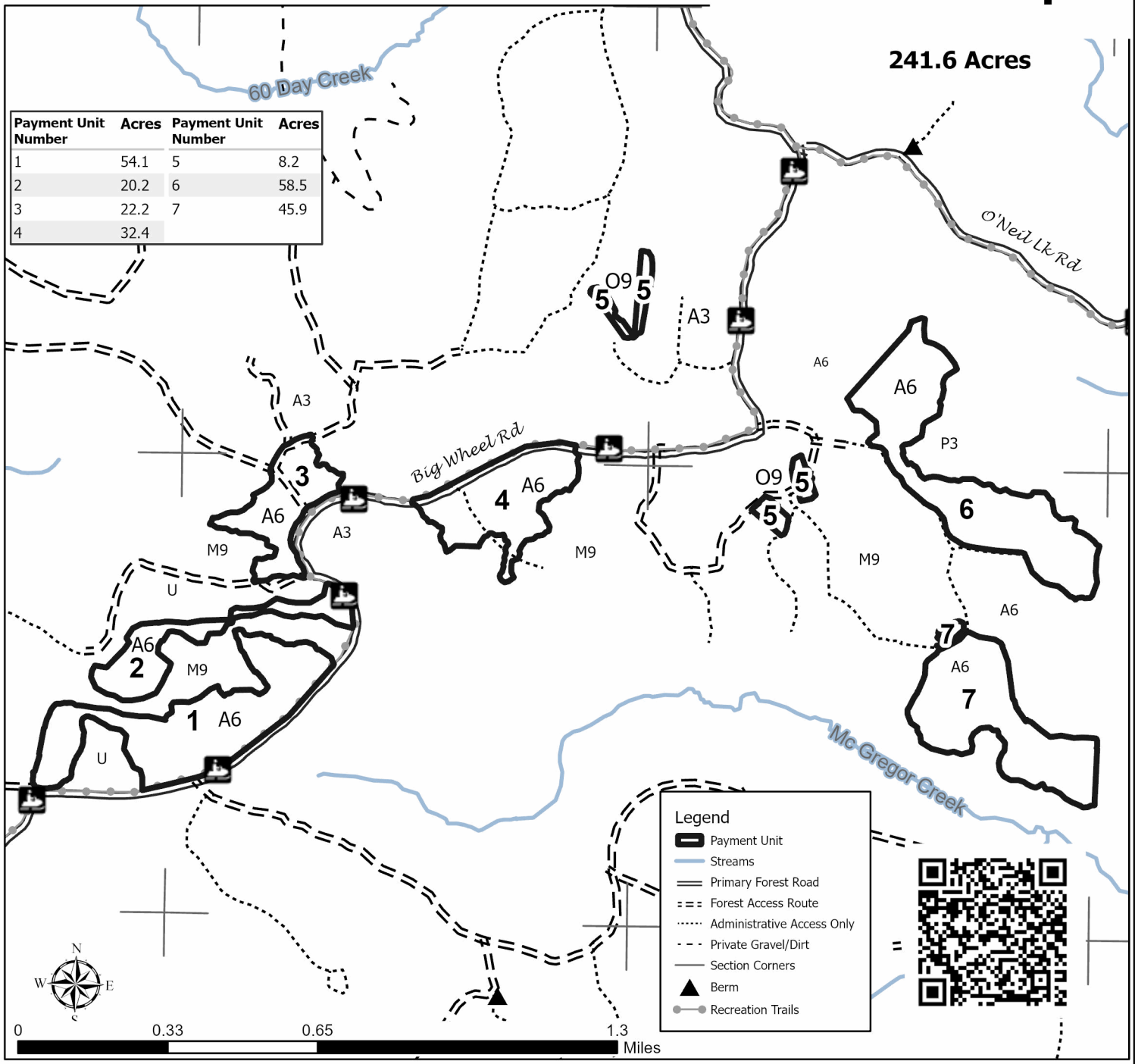
Density

0 = Non Stocked	5 = Pole Timber Medium
1 = Seedling Sapling Poor	6 = Pole Timber Well
2 = Seedling Sapling Medium	7 = Saw Timber Poor
3 = Seedling Sapling Well	8 = Saw Timber Medium
4 = Pole Timber Poor	9 = Saw Timber Well

Hunter Harraspén

241.6 Acres

Payment Unit Number	Acres	Payment Unit Number	Acres
1	54.1	5	8.2
2	20.2	6	58.5
3	22.2	7	45.9
4	32.4		



Low Tech Mix 2 (12-001-26)

T44N, R29W, SEC. 19; T44N, R29W, SEC. 20; T44N, R29W, SEC. 21; T44N,

In response to the notice of sale to be held 3:00 p.m. (local time) on July 1, 2026, I am hereby submitting my sealed bid (firm offer) for the following forest products to be cut. Bids for individual species must be at or above the advertised price. All non-responsive bid forms may be rejected.

<u>PRODUCTS & SPECIES</u>	<u>ESTIMATED VOLUME*</u>	<u>ADVERTISED PRICE</u>	<u>BID PRICE/UNIT</u>
Sawtimber			
Paper Birch	28.1 MBF	\$ 78.00/MBF	\$ _____
Red Pine	94.4 MBF	\$ 90.00/MBF	\$ _____
Pulpwood			
Balsam Fir	62 Cords	\$ 4.00/Cord	\$ _____
Jack Pine	19 Cords	\$ 21.10/Cord	\$ _____
Mixed Aspen	1,501 Cords	\$ 14.20/Cord	\$ _____
Mixed Hardwood	295 Cords	\$ 8.60/Cord	\$ _____
Mixed Spruce	856 Cords	\$ 5.80/Cord	\$ _____
Red Pine	227 Cords	\$ 52.70/Cord	\$ _____
Tamarack	90 Cords	\$ 5.95/Cord	\$ _____

*The volumes are statistically estimated within plus (+) or minus (-) 13.22 percent at 95% confidence level. These estimated volumes are final and not subject to adjustment. Prospective bidders are urged to examine this timber and to make their own estimates of quantity and quality.

I understand that any or all bids may be rejected. All bids must be signed and all bid items must be bid or the bid form may be rejected. I also understand that consideration and awarding a contract will be based upon my past performance and ability to complete the contract based upon equipment and staffing subject to my control.

FEDERAL ID: ____ - ____ - ____ or SOCIAL SECURITY NUMBER: ____ - ____ - ____

Company or individual bidding: _____

Company representative's name: _____

Address: _____

City: _____ State: _____ Zip: _____

IF AVAILABLE, PLEASE PLACE THE PERSONALIZED LABEL FROM YOUR PROSPECTUS IN THE ABOVE BOX.

Individual or company representative's signature: _____ Date: _____

Phone number : _____ Email (optional): _____

THE WINNING BIDDER MUST COMPLETE THE VERIFICATION OF WORKER'S DISABILITY COMPENSATION ACT COMPLIANCE (ON REVERSE SIDE IF DOUBLE SIDED) WITHIN 21 DAYS OF SALE AWARD DATE



FOR DEPARTMENT USE ONLY
Sale Number (XX - XXX - XX - XX)
Forest Management Unit:

TIMBER SALE VERIFICATION OF WORKER'S DISABILITY COMPENSATION ACT COMPLIANCE

*As required by Act 317, P.A. 1969 (Worker's Compensation) and
Part 5 of Act 451 of 1994, as amended.*

VERIFICATION OF WORKER'S DISABILITY COMPENSATION ACT COMPLIANCE

- This verification must be completed and submitted within 21 days of contract award and prior to the issuance of the timber sale contract.
- In addition, if boxes 2B or 2C are checked, then Notice of Exclusion or Certificate of Insurance must be submitted within twenty-one (21) days of the contract award and prior to the issuance of the timber sale contract.
- All information must be typed or printed except for written signatures.

Please Check Appropriate Categories:

1. My business is organized as (you **must** check one of the boxes below):
 - A. Sole Proprietorship (individual)
 - B. Partnership
 - C. Corporation

2. You **must** check one of the boxes below:
 - A. I certify my business is a sole proprietorship and it has no employees but the sole proprietor. I am not subject to the Worker's Compensation Laws.
 - B. I certify my business has satisfied its obligation to the Worker's Compensation Act through the use of an approved Notice of Exclusion (BWC-337, Rev. 5/96). I will provide a copy of the Notice of Exclusion within 21 days of the contract award. (For questions or a copy of the BWC-337, please call the Worker's Compensation Bureau at 517 -322-1195).
 - C. I certify my business has a Worker's Compensation Policy. I will provide an original Certificate of Insurance within twenty-one (21) days of the contract award.

3. If you have checked item 2(A) or 2(B), you **must** indicate the number of **both** full-time and part-time employees, other than yourself, including family members and active partners (if none, you must enter "0").

_____ Full-time Employees

_____ Part-time Employees

Name of Business		Federal ID (or) Social Security No.	
Address		Telephone ()	
City	State	ZIP	

I hereby certify that the above information is true and correct. I agree to notify the Michigan DNR of any changes that occur in factors affecting my coverage during any of my present and future operations.

Signature of Owner or Authorized Representative

Title

Date

Please complete the "SEALED BID" information on the next page

Hunter Harraspén (12-002-26)

T44N, R29W, SEC. 11; T44N, R29W, SEC. 12; T44N, R29W, SEC. 13; T44N,

In response to the notice of sale to be held 3:00 p.m. (local time) on July 1, 2026, I am hereby submitting my sealed bid (firm offer) for the following forest products to be cut. Bids for individual species must be at or above the advertised price. All non-responsive bid forms may be rejected.

<u>PRODUCTS & SPECIES</u>	<u>ESTIMATED VOLUME*</u>	<u>ADVERTISED PRICE</u>	<u>BID PRICE/UNIT</u>
Sawtimber			
Red Maple	16.7 MBF	\$ 155.00/MBF	\$ _____
Red Oak	74.8 MBF	\$ 133.00/MBF	\$ _____
Sugar Maple	11.1 MBF	\$ 295.00/MBF	\$ _____
Pulpwood			
Mixed Hardwood	899 Cords	\$ 11.75/Cord	\$ _____
Quaking Aspen	5,711 Cords	\$ 19.40/Cord	\$ _____
Red Oak	156 Cords	\$ 13.35/Cord	\$ _____

*The volumes are statistically estimated within plus (+) or minus (-) 11.25 percent at 95% confidence level. These estimated volumes are final and not subject to adjustment. Prospective bidders are urged to examine this timber and to make their own estimates of quantity and quality.

I understand that any or all bids may be rejected. All bids must be signed and all bid items must be bid or the bid form may be rejected. I also understand that consideration and awarding a contract will be based upon my past performance and ability to complete the contract based upon equipment and staffing subject to my control.

FEDERAL ID: _____ - _____ or SOCIAL SECURITY NUMBER: _____ - _____ - _____

Company or individual bidding: _____

Company representative's name: _____

Address: _____

City: _____ State: _____ Zip: _____

IF AVAILABLE, PLEASE PLACE THE PERSONALIZED LABEL FROM YOUR PROSPECTUS IN THE ABOVE BOX.

Individual or company representative's signature: _____ Date: _____

Phone number : _____ Email (optional): _____

THE WINNING BIDDER MUST COMPLETE THE VERIFICATION OF WORKER'S DISABILITY COMPENSATION ACT COMPLIANCE (ON REVERSE SIDE IF DOUBLE SIDED) WITHIN 21 DAYS OF SALE AWARD DATE



TIMBER SALE VERIFICATION OF WORKER'S DISABILITY COMPENSATION ACT COMPLIANCE

As required by Act 317, P.A. 1969 (Worker's Compensation) and
Part 5 of Act 451 of 1994, as amended.

FOR DEPARTMENT USE ONLY	
Sale Number (XX - XXX - XX - XX)	
Forest Management Unit:	

VERIFICATION OF WORKER'S DISABILITY COMPENSATION ACT COMPLIANCE

- This verification must be completed and submitted within 21 days of contract award and prior to the issuance of the timber sale contract.
- In addition, if boxes 2B or 2C are checked, then Notice of Exclusion or Certificate of Insurance must be submitted within twenty-one (21) days of the contract award and prior to the issuance of the timber sale contract.
- All information must be typed or printed except for written signatures.

Please Check Appropriate Categories:

1. My business is organized as (you **must** check one of the boxes below):
 - A. Sole Proprietorship (individual)
 - B. Partnership
 - C. Corporation
2. You **must** check one of the boxes below:
 - A. I certify my business is a sole proprietorship and it has no employees but the sole proprietor. I am not subject to the Worker's Compensation Laws.
 - B. I certify my business has satisfied its obligation to the Worker's Compensation Act through the use of an approved Notice of Exclusion (BWC-337, Rev. 5/96). I will provide a copy of the Notice of Exclusion within 21 days of the contract award. (For questions or a copy of the BWC-337, please call the Worker's Compensation Bureau at 517 -322-1195).
 - C. I certify my business has a Worker's Compensation Policy. I will provide an original Certificate of Insurance within twenty-one (21) days of the contract award.
3. If you have checked item 2(A) or 2(B), you **must** indicate the number of **both** full-time and part-time employees, other than yourself, including family members and active partners (if none, you must enter "0").

_____ Full-time Employees

_____ Part-time Employees

Name of Business		Federal ID (or) Social Security No.	
Address		Telephone ()	
City	State	ZIP	

I hereby certify that the above information is true and correct. I agree to notify the Michigan DNR of any changes that occur in factors affecting my coverage during any of my present and future operations.

Signature of Owner or Authorized Representative

Title

Date

Please complete the "SEALED BID" information on the next page