



**DEPARTMENT OF NATURAL RESOURCES
STATE OF MICHIGAN
TIMBER SALE PROSPECTUS #7834**

SCHEDULED SALE DATE AND TIME: 10:00 a.m. (local time) on June 17, 2026.

LOCATION: GLADWIN MGMT UNIT, 801 NORTH SILVERLEAF, GLADWIN, MI 48624.

PROSPECTUS NOTE: The bidder is advised to inspect the sale area and review the location, estimated volumes, operating costs and contract terms of proposed sales. Please be aware that some landowners may request 60 days or more notice for access across their land.

Notice is hereby given that bids will be received by the Unit Manager, GLADWIN MANAGEMENT UNIT, for certain timber on the following described lands:

Grouse Buster Borough (73-010-25) / T18N, R06W, SEC. 35, NW,NE,N1/2SW.

Clare County, Advertised Price \$219,674.00, 141.8 Acres, Hardwood, Aspen.

SALE NOTE: This sale is within scope of an MDARD internal quarantine to reduce the spread of balsam wooly adelgid. 5.2.3.1 - Within Payment Unit(s) 1-5, cutting, skidding, and hauling of balsam fir are only permitted during the period of November 15 to March 15 unless all bark has been removed. This restriction is necessary due to an MDARD internal quarantine to reduce the spread of balsam wooly adelgid. A driveway will need to be installed on M-115 for access to PU's 1 & 2. The purchaser will be responsible for driveway permit and installation.

Tree list is available upon request.

Yellow Jacket Megalopolis (73-011-25) / T17N, R06W, SEC. 4 , NWNW.

T18N, R06W, SEC. 32, E1/2SE.

T18N, R06W, SEC. 33, W1/2SW.

Clare County, Advertised Price \$53,039.00, 47.0 Acres, Hardwood, Aspen.

SALE NOTE: Tree list is available upon request.

A recreation site such as a trail, pathway, or campground is within the sale area or the vicinity. Certain restrictions/specifications may be applicable including time restrictions.

BID INSTRUCTIONS (VER. 10/10/2022):

1. Scheduled Bid Location, Date, and Time (2/11)

Bids must be received by the Unit Manager, GLADWIN OFFICE, 801 NORTH SILVERLEAF, GLADWIN, MI 48624, no later than 10:00 a.m. (local time) on June 17, 2026. For further information concerning this sale, contact Blair Tweedale at 989-426-9205 extension 7640.

2. Bidder's Qualifications (10/22)

If all or part of a timber sale was prepared by a private contractor, the contractor and that contractor's company are not permitted to bid on the timber sale. A person must be 18 years of age or older to purchase timber. Permanent employees of the Department of Natural Resources or members of their immediate household may not bid. Former employees, in the permanent or seasonal class, may not bid until 3 months after the last day of active duty. Bids will not be accepted from individuals or companies appearing on the DNR/FRD No-Bid List. This list contains the names of purchasers who previously failed to execute a contract within 21-days or who have a history of poor performance.

3. Preparation of Sealed Bids (5/16)

Bid Forms may be completed online thru Michigan DNR Timber Sale Online Bidding (OLB) at www.michigan.gov/timberbidding or by completing the hardcopy Bid Form found in the Timber Sale Prospectus. Hardcopy Bid Forms shall be manually signed in ink. Registration in OLB is considered your 'signature' for all bids submitted thru that system. Bid prices must be entered for each species and product in the Bid Price column for all material subject to bidding and all fill-in blanks must be completed. If erasures or other changes appear on the hardcopy Bid Form, each erasure or change must be initialed by the person signing the bid.

4. Submission of Sealed Bids (5/16)

Bid forms may be obtained from the Unit Manager or thru OLB. Bids may be submitted hardcopy or thru OLB. All hardcopy bids must be submitted on the bid form and in an envelope clearly identified as described in this section. NOTE: Only one bid form per bid envelope. Sealed bids must be submitted to the Unit office designated in the prospectus and must be submitted at or prior to the time established in the prospectus. The envelope should show on the outside (a) the sale name or number and (b) the date and time of bid opening, as shown in the prospectus. Bids received after the time specified in the sale prospectus are late bids and will be rejected.

It is possible for a bidder to submit multiple bids on a single sale. For example, a bid may be submitted hardcopy and a bid may be submitted thru OLB. Or, two bidders from the same company could both submit bids on the same sale. If this were to happen, the State would accept all bids received and award the contract accordingly. All bidding and contractual requirements would apply to all bids received.

5. Public Opening of Sealed Bids (7/16)

If conditions permit, the sealed bids will be publicly opened and posted at the time and place set in the prospectus.

If a bidder, present at a bid opening, has submitted bids on more than one sale, that bidder may withdraw their unopened bid envelopes or announce the withdrawal of their online bid after being declared the successful bidder on one sale.

6. Award of Contract (1/11)

Award of the contract will be made to the Bidder whose bid, conforming to the prospectus, is most advantageous to the State of Michigan on the basis of total value at rates bid for the estimated quantities. The State reserves the right to reject any bid or waive any minor irregularity in bids received. A written award mailed (or otherwise furnished) to the successful Bidder shall be deemed to result in a binding contract without further action by either party.

7. Down Payment (1/11)

The Bidder to whom award is made must make a down payment within 21 days of the sale award. The amount of the down payment will be calculated as shown in the Bond and Payment Schedule of this prospectus. Only cash may be used to meet this requirement.

8. Performance Security (1/11)

As guarantee of faithful performance, a cash bond, certificate of deposit, surety bond or irrevocable letter of credit (LOC) is required within 21 days of the sale award. The amount of the performance security is shown in the Bond and

Payment Schedule of this prospectus. If an LOC or surety is used, the coverage must extend for at least 6 months beyond the contract expiration.

9. Worker's Compensation (10/22)

Purchaser shall obtain worker's compensation insurance to cover claims under Michigan's Worker's Disability Compensation Act of 1969 or similar employee benefit act of any other state applicable to an employee. Verification of Worker's Disability Compensation Act Compliance must be completed and submitted within 21 days of contract award and prior to the issuance of the timber sale contract. In addition, if applicable, Notice of Exclusion or Certificate of Insurance must also be submitted.

10. Timber Sale Contract (10/22)

Additional conditions and requirements common to all timber sales are listed on the timber sale contract (R4031) and are available on line at www.michigan.gov/timber. Contact the Unit Manager for additional information or a sample contract. Within 21 days of the date of the award letter, the bidder must sign the contract and provide the required down payment, performance security, and verification of worker's disability compensation. The down payment and performance security shall be in accordance with the provisions of the timber sale contract, in the sums stated in this prospectus. If these actions are not taken, then the Bidder, the Bidder's corporation, and the corporation's principals may not be permitted to bid on State timber sales for a period of 3 months after the first offense, 6 months after the second offense, and 1 year after the third offense. An offense will only be counted against the Bidder for 5 years. In addition, the Bidder certifies that if awarded this contract, the Bidder will complete the timber sale contract in accordance with its terms and any modifications thereof including requirements to purchase, cut, and remove the included timber by the expiration date.

Payment Unit values in the State Forest Timber Sale Contract are calculated based on the advertised value of the Payment Unit as a percentage of the total advertised value of the contract. The advertised value of each Payment Unit is given in the Description of Timber by Payment Unit table on the Timber Sale Information page. For example, if the value of Payment Unit 1 is advertised as \$1,500 and the total Timber Sale value is advertised as \$10,000, the contract price for Payment Unit 1 will be 15% of the total bid price ($\$1,500/\$10,000 * 100$).

11. Disclaimer of Estimates and Bidder's Warranty of Inspection (10/22)

Before submitting this bid, the Bidder is advised and cautioned to inspect the sale area, review the requirements of the sale contract, and take other steps as may be reasonably necessary to ascertain the location, estimated volumes, construction estimates, and operating costs of the proposed sale. Failure to do so will not relieve the Bidder from responsibility for completing the contract.

The Bidder warrants that this bid is submitted solely on the basis of the Bidder's examination and inspection of the quality and quantity of the timber offered for sale and the Bidder's opinion of the value thereof and the costs of recovery. No reliance should be placed on the State of Michigan's estimates of timber quality, quantity or costs of recovery. Bidder further acknowledges that the State of Michigan: (i) expressly disclaims any warranty of fitness of timber for any purpose; (ii) offers this timber as is without any warranty of quality (merchantability) or quantity and (iii) expressly disclaims any warranty as to the quantity or quality of timber sold.

12. Certification and Chain-of-Custody (10/22)

Unless otherwise indicated in the contract under section 7 – Other Conditions of the Sale Specific Conditions & Requirements, the area encompassed by this timber sale is certified to the standards of the Forest Stewardship Council (FSC) - Certificate #SCS-FM/COC-00090N and the Sustainable Forestry Initiative (SFI) - Certificate #NSF-SFIS-5Y031-SF5. Forest products from this sale may be delivered to the mill as "FSC 100% and / or SFI certified" as long as the contractor hauling the forest products is chain-of-custody (COC) certified or covered under a COC certificate from the destination mill. The purchaser is responsible for maintaining COC after leaving the sale area.

13. Good Neighbor Authority (GNA) Requirements (10/22)

If the name of this timber sales contains the acronym GNA, it is authorized by the Good Neighbor Authority (GNA) and covered by various agreements between the U.S. Forest Service and the State. The timber sale occurs on federal land and the following conditions apply:

GNA contracts on US Forest Service land will not be awarded to purchasers on the Federal list of excluded parties. The System for Award Management (SAM) will be checked for active excluded parties prior to award of contract. In

addition, the Bidder to whom award is made must complete an Assurance Regarding Felony Conviction or Tax Delinquent Status for Corporate Applicants (AD-3031).

14. Good Neighbor Authority (GNA) Requirements, con't (10/22)

Bidder certifies, by signing this bid form, that to the best of Bidder's knowledge that the following representations are accurate and complete.

- a. That the Bidder and its principals are not presently debarred, suspended, proposed for debarment, declared ineligible, or voluntary excluded from timber sales (covered transactions) by any Federal department or agency.
- b. That the Bidder and its principals have not within a 3-year period preceding this bid been convicted of or had a civil judgment rendered against them for commission of fraud or a criminal offense in connection with obtaining , attempting to obtain, or performing a public (Federal, State, or local) transaction or contract under a public transaction; violation of Federal or State antitrust statutes or commission of embezzlement, theft, forgery, bribery, falsification or destruction of records, making false statements, or receiving stolen property.
- c. That the Bidder and its principals are not presently indicted for or otherwise criminally or civilly charged by a governmental entity (Federal, State, or local) with commission of any of the offenses enumerated in paragraph b of this certification.
- d. That the Bidder and its principals have not within a 3-year period preceding this bid had one or more public transactions (Federal, State, or local) terminated for breach or default of a timber or forest product contract.

Bidders that cannot certify this requirement, in whole or in part, shall submit an explanation with their bid.

Scott Bowen
Director

TIMBER SALE INFORMATION

Grouse Buster Borough (73-010-25)
T18N, R06W, SEC. 35.
Clare County (Advertised Price \$219,674.00)

SALE NOTE: This sale is within scope of an MDARD internal quarantine to reduce the spread of balsam woolly adelgid. 5.2.3.1 - Within Payment Unit(s) 1-5, cutting, skidding, and hauling of balsam fir are only permitted during the period of November 15 to March 15 unless all bark has been removed. This restriction is necessary due to an MDARD internal quarantine to reduce the spread of balsam woolly adelgid. A driveway will need to be installed on M-115 for access to PU's 1 & 2. The purchaser will be responsible for driveway permit and installation.

Tree list is available upon request.

A timber sale contract for this lump sum, sealed bid timber sale will be awarded to the responsible bidder offering the highest sealed bid price. All units of volume listed below were estimated using the Inventory Manager computer program and the new Michigan taper model. Bids must be at or above the following advertised price for each product and species:

<u>PRODUCTS & SPECIES</u>	<u>ESTIMATED UNITS*</u>	<u>ADVERTISED PRICE</u>
Sawtimber		
B. T. Aspen	487.5 MBF	\$ 71.00 / MBF
Black Cherry	20.5 MBF	\$ 144.00 / MBF
Black/Red (Hybrid) Oak	495.9 MBF	\$ 168.00 / MBF
Red Maple	270.3 MBF	\$ 56.00 / MBF
White Oak	91.3 MBF	\$ 97.00 / MBF
Pulpwood		
Balsam Fir	14 Cords	\$ 23.90 / Cord
Mixed Aspen	1,131 Cords	\$ 24.45 / Cord
Mixed Hardwood	1,428 Cords	\$ 18.45 / Cord
Mixed Oak	846 Cords	\$ 22.20 / Cord
Paper Birch	26 Cords	\$ 40.05 / Cord
White Pine	25 Cords	\$ 25.95 / Cord

* The total volume is statistically estimated within plus (+) or minus (-) 12.57 percent. There are an estimated 6,674 cords on this timber sale, plus or minus 839 cords at the 95% confidence level. The estimated units are final and not subject to adjustment. Prospective bidders are urged to examine this timber and to make their own estimates of quantity and quality.

BOND AND PAYMENT SCHEDULE:

1. A bond in the amount of \$10,984.00 to insure faithful performance of the conditions of the contract will be deposited by the successful bidder within 21 days of the sale award.
2. Cutting in any sale or unit without the required advance payment would be considered a trespass.
3. Total payment must be paid in advance or according to the following schedule :
 - (a) Ten percent (10%) of the sale value must be paid within 21 days of the sale award.
 - (b) The 10% down payment will be credited towards the first unit cut.
 - (c) Payment for each of the following units must be made before cutting begins in that unit:

PAYMENT UNIT NUMBER	PERCENT OF TOTAL SALE VALUE
01	17.1%
02	48.4%
03	8.2%
04	14.9%
05	11.4%
4. If no cutting takes place, the 10% down payment will not be refunded.
5. Operations on the contract issued will terminate on 06/30/2029.

SALE STATISTICS

Volumes were calculated in cubic feet using the Michigan taper model. Cubic foot volume includes all wood inside bark for the product indicated. For display purposes, cubic feet were converted to cords and MBF using a simple conversion factor, e.g. 79 cubic feet per cord and 185 cubic feet per MBF. The cubic foot volumes are precise; the cords and MBF volumes are not. Cubic foot volume cannot be directly converted to cords or boards with precision.

SALE VOLUMES

The total estimated sale volume may not equal the sum of the species/products due to the nature of statistical calculations associated with double sampling methodology.

VOLUME			STATISTICAL RANGE IN CORDS	
TOTAL CUBIC FEET	TOTAL CORDS	PERCENT ERROR	MINIMUM	MAXIMUM
527,215	6,674	12.57%	5,835	7,513

VDU VOLUMES

A VDU is a Volume Determination Unit. Volumes and their associated statistics are calculated at the VDU level and summarized to the sale level. There is often a one to one relationship between a VDU and a Payment Unit, but not always, depending on the cruise design. Refer to the VDU TO PAYMENT UNIT table.

	VOLUME			RANGE IN CORDS	
VDU	TOTAL CUBIC FEET	TOTAL CORDS	PERCENT ERROR	MINIMUM	MAXIMUM
38	33,682	426	50.77%	210	643
41	36,449	461	43.14%	262	660
46	67,463	854	35.59%	550	1,158
50	45,605	577	43.52%	326	829
67	344,016	4,355	15.89%	3,663	5,047
TOTAL:	527,215	6,674		5,011	8,336

VDU TO PAYMENT UNIT

When a VDU is associated with more than one Payment Unit (PU), the VDU volumes are assigned to the PU based on acres of the VDU within the PU.

VDU	VDU ACRES	PU	PU ACRES
TOTAL:			

DESCRIPTION OF TIMBER BY PAYMENT UNIT (PU)

PU	MARKET GROUP	PRODUCT	QUANTITY	UNIT	ACRES	ADVERTISE PRICE
1	B. T. Aspen	Sawtimber	76.5	MBF	24.7	\$37,507.25
	Black Cherry		5.3	MBF		
	Black/Red (Hybrid		87.5	MBF		
	Red Maple		38.3	MBF		
	White Oak		11.2	MBF		
	Mixed Aspen	Pulpwood	212	Cords		
	<i>B. T. Aspen</i>		212	<i>Cords</i>		
	Mixed Hardwood		253	Cords		
	<i>Black Cherry</i>		34	<i>Cords</i>		
	<i>Red Maple</i>		219	<i>Cords</i>		
	Mixed Oak		152	Cords		
	<i>/Red (Hybrid) Oak</i>		135	<i>Cords</i>		
	<i>White Oak</i>		17	<i>Cords</i>		
	White Pine		6	Cords		
<i>White Pine</i>	<i>Sawtimber</i>	<i>0.8</i>	<i>MBF</i>			
<i>White Pine</i>	<i>Pulpwood</i>	<i>4</i>	<i>Cords</i>			
2	B. T. Aspen	Sawtimber	216.9	MBF	70.0	\$106,330.50
	Black Cherry		15.2	MBF		
	Black/Red (Hybrid		247.9	MBF		
	Red Maple		108.5	MBF		
	White Oak		31.7	MBF		
	Mixed Aspen	Pulpwood	601	Cords		
	<i>B. T. Aspen</i>		601	<i>Cords</i>		
	Mixed Hardwood		715	Cords		
	<i>Black Cherry</i>		96	<i>Cords</i>		
	<i>Red Maple</i>		619	<i>Cords</i>		
	Mixed Oak		432	Cords		
	<i>/Red (Hybrid) Oak</i>		382	<i>Cords</i>		
	<i>White Oak</i>		50	<i>Cords</i>		
	White Pine		18	Cords		
<i>White Pine</i>	<i>Sawtimber</i>	<i>2.4</i>	<i>MBF</i>			
<i>White Pine</i>	<i>Pulpwood</i>	<i>13</i>	<i>Cords</i>			
3	B. T. Aspen	Sawtimber	53.1	MBF	11.4	\$18,037.45
	Black/Red (Hybrid		32.0	MBF		
	Red Maple		24.9	MBF		
	White Oak		10.2	MBF		
	Balsam Fir	Pulpwood	5	Cords		
	Mixed Aspen		121	Cords		
	<i>Quaking Aspen</i>	<i>Sawtimber</i>	<i>7.1</i>	<i>MBF</i>		
	<i>B. T. Aspen</i>	<i>Pulpwood</i>	<i>84</i>	<i>Cords</i>		
	<i>Quaking Aspen</i>		23	<i>Cords</i>		
	Mixed Hardwood		80	Cords		
	<i>Red Maple</i>		80	<i>Cords</i>		
	Mixed Oak		88	Cords		
	<i>/Red (Hybrid) Oak</i>		79	<i>Cords</i>		
	<i>White Oak</i>		9	<i>Cords</i>		
4	B. T. Aspen	Sawtimber	67.3	MBF	18.4	\$32,822.75
	Black/Red (Hybrid		91.1	MBF		
	Red Maple		27.4	MBF		
	White Oak		26.8	MBF		
	Balsam Fir	Pulpwood	9	Cords		
	Mixed Aspen		135	Cords		
	<i>B. T. Aspen</i>		135	<i>Cords</i>		
	Mixed Hardwood		111	Cords		
	<i>Sugar Maple</i>	<i>Sawtimber</i>	<i>3.2</i>	<i>MBF</i>		
	<i>Red Maple</i>	<i>Pulpwood</i>	<i>99</i>	<i>Cords</i>		

DESCRIPTION OF TIMBER BY PAYMENT UNIT (PU), CON'T

PU	MARKET GROUP	PRODUCT	QUANTITY	UNIT	ACRES	ADVERTISE PRICE	
4 con't	<i>Sugar Maple</i>	<i>Pulpwood</i>	6	<i>Cords</i>			
	Mixed Oak		128	<i>Cords</i>			
	<i>/Red (Hybrid) Oak</i>		110	<i>Cords</i>			
	<i>White Oak</i>		18	<i>Cords</i>			
	Paper Birch		5	<i>Cords</i>			
	<i>Paper Birch</i>		5	<i>Cords</i>			
5	B. T. Aspen	Sawtimber	73.7	MBF	17.3	\$25,002.00	
	Black/Red (Hybrid		37.4	MBF			
	Red Maple		71.2	MBF			
	White Oak		11.4	MBF			
	Mixed Aspen	Pulpwood	62	<i>Cords</i>			
	<i>B. T. Aspen</i>		62	<i>Cords</i>			
	Mixed Hardwood		269	<i>Cords</i>			
	<i>Black Cherry</i>		12	<i>Cords</i>			
	<i>Red Maple</i>		257	<i>Cords</i>			
	Mixed Oak		46	<i>Cords</i>			
	<i>/Red (Hybrid) Oak</i>		40	<i>Cords</i>			
	<i>White Oak</i>		6	<i>Cords</i>			
	Paper Birch		21	<i>Cords</i>			
	<i>Paper Birch</i>		Sawtimber	2.1			<i>MBF</i>
	<i>Paper Birch</i>			Pulpwood			17
	White Pine		2				<i>Cords</i>
	<i>White Pine</i>		2	<i>Cords</i>			
	TOTAL:			1,365.5			MBF
TOTAL:			3,471	Cords			

Sale Specific Conditions & Requirements

Sale Name: Grouse Buster Borough

Sale Number: 73-010-25 Seq#: 2

1 - Sale Area

1.2 - Boundaries

1.2.1 - Painted Boundaries (9/19)

The sale boundary and Payment Unit boundaries are marked and identified by blue and red paint. Lake Station and M-115 are unpainted designated boundaries and shown on the Timber Sale Map. Exterior sale boundary lines against private property are marked with blue paint. Exterior sale boundary lines against state are marked with red paint. Retention patches are marked with red paint; no harvesting activities may occur within these areas. The red painted boundary line trees are Included Timber.

2 - Timber Specifications

2.1 - Included Timber

2.1.1 - Clearcut Unit(s) with Unmerchantable Trees (6/14)

Within Payment Unit(s) 1-5, cut all trees that are two (2) inches or more at DBH.

Exception: Within Payment Unit 5, do not cut balsam fir or cedar.

2.1.15 - Hazard Trees Near Roads (12/24)

Cut and remove all standing dead trees within 100 feet of the cleared portion of designated county roads. These trees may be utilized or must be scattered back into the Sale Area.

3 - Payments

3.3 - Pre-measured Sales

3.3.4 - Dividing Payment Units (7/14)

Payment Unit(s) may be divided at the request of the Purchaser and upon approval of the Unit Manager. Dividing Payment Units is a contract modification which requires a Timber Sale Contract Amendment. There will be only one division per Payment Unit.

3.4 - Damaged Timber

3.4.1 - Damaged Timber (12/24)

General Condition and Requirement 3.4 Damaged Timber, defines liquidated damages for undesignated live merchantable trees which are cut or injured. In addition, extreme care should be taken to avoid damage to tree seedlings and saplings. No damage is acceptable to undesignated live merchantable trees. Within the Sale Area, if more than 20% of trees (> 4.5" DBH) within a specified area of the sale are damaged, liquidated damages will be assessed for all trees damaged. Rates will be in accordance with General Condition and Requirement 3.4 Damaged Timber.

4 - Transportation

4.1 - Construction

4.1.6 - Road Construction (4/24)

Construction of new roads or improvements of existing roads shall be done in such a way as to minimize the environmental and visual impacts. Merchantable trees shall be cut and utilized unless otherwise directed. Non-merchantable trees shall be severed and laid flat on the ground. Slash shall be scattered, not left in windrows, and kept a minimum of 10 feet back from the road edge. Stumps shall be set upright, not left on edge, and be moved at least 10 feet away from the road edge. Disturbed soil shall be feathered into the woods and not left in berms or windrows.

4.1.7 - Road Closure (10/11)

All new roads built into the sale must be blocked to vehicle traffic upon completion of the sale. Overgrown roads that are reopened shall be considered new roads. In general, this will require constructing a four (4') foot high berm of stumps and logs covered with earth. Stumps and brush must be placed along the remainder of the trail. These roads must be rendered impassable to cars and trucks. Contact the Sale Administrator for specific details of design and placement.

4.1.11 - Permits (2/12)

The MI DNR will secure any necessary highway permits that may be required. Purchaser will be responsible for installation of driveway along M-115.

4.4 - Access

4.4.2 - Alternate route on private property (2/04)

It is the Purchaser's responsibility to obtain access across private land for any routes other than the route shown on the Timber Sale Map.

5 - Operations

5.1 - Notification

5.1.1 - Pre-sale Conference (10/25)

A pre-sale conference on site between the Purchaser and Sale Administrator is required prior to beginning any operations to determine landing and road locations. The Unit Manager or his/her representative must be contacted at least 3 days in advance to schedule the conference.

5.1.3 - Well Heads and Natural Gas Pipelines (11/15)

The Purchaser is responsible for contacting the gas or pipeline company prior to operating equipment in the vicinity of well heads or natural gas pipelines.

5.1.4 - Post-Sale Conference (10/16)

A post-sale conference on site between the Purchaser and sale administrator is required prior to the completion of active logging operations to determine clean-up and repair of landings, road edges, and the fulfillment of other contract specifications.

5.2 - Conduct of Operations

5.2.3 - Operating Restrictions

5.2.3.1 - Operating Restrictions (9/11)

Within Payment Unit(s) 1-5, cutting, skidding, and hauling of balsam fir are only permitted during the period of November 15 to March 15 unless all bark has been removed. This restriction is necessary due to an MDARD internal quarantine to reduce the spread of balsam woolly adelgid.

5.2.3.5 - Oak Wilt Restriction (1/18)

Within Payment Unit(s) 1-5, unless changed by written agreement, cutting, skidding, hauling within the sale and brushing of access roads to the sale are not permitted during the period of April 15 to July 15. Operations may be allowed if specific steps are taken to prevent damaging uncut oak during the high-risk period. Those steps may include completing all road brushing before April 15 and clearing a tree-length buffer along uncut oak cover before April 15. This is necessary to reduce the spread of oak wilt. For more information, contact the Unit Manager or his/her representative.

5.2.4 - Dead and Down Creation

5.2.4.4 - Dead and Down Creation, Grouse (6/18)

To encourage grouse and other wildlife, in Payment Unit(s) 1-5, leave one 12" or larger diameter whole tree on the ground for every three (3) acres. Trees should be scattered throughout the sale and at least two chains from any roads, two-tracks, or trails open to vehicles, or positioned per the Sale Administrator's instructions. Stumps must be at least three (3) feet tall.

5.2.32 - Decking/Landing Restoration (9/13)

All decking and landing areas must have the surface area restored to a condition equal to or better than before. This is to ensure the proper regeneration of the stand. Wood debris, chips and "cookies" from trimmings must be removed or scattered away from landing and loading areas and may not be windrowed on the edge.

6 - Safety and Fire Prevention

6.2 - Signing

6.2.1 - Road Posting (10/20)

The Purchaser is responsible for posting and maintaining caution signs on M-115 & Lake Station Avenue prior to beginning operations. The road must be posted at appropriate distances from the Sale Area to warn of logging activity and truck traffic. Signs must be removed when harvest operations are suspended or completed. The Purchaser will provide these signs.



TIMBER SALE MAP

This information provided by authority of Part 525, 1994 PA 451, as amended.

Sale Number 73-010-25	Date 04/24/2026
Scale 1:15,840	Page 1
	Of 1

Forest Management Unit Gladwin Mgt Unit	County Clare	Mapped By: Behrmann
		Cruised By: Behrmann

Township 18N	Range 06W	Section(s) and Subdivision(s) Sec. 35 NW,NE,N1/2SW;
------------------------	---------------------	--

Cover Type			
A = Aspen	J = Jack Pine	O = Oak	U = Upland Brush
B = Paper Birch	K = Rock	P = Lowland Poplar	UM = Upland Mix Forest
C = Cedar	L = Lowland Brush	Q = Mixed Swamp Conifer	V = Bog or Marsh
D = Treed Bog	LM = Lowland Mix Forest	R = Red Pine	W = White Pine
E = Swamp Hardwoods	M = Maple, Beech, Birch	S = Black Spruce	X = Non Stocked
F = Spruce/Fir	MC = Mixed Conifer	T = Tamarack	Y = Sand
G = Grass	MD = Mixed Deciduous	Z = Water	
H = Hemlock	N = Marsh		

Density	
0 = Non Stocked	5 = Pole Timber Medium
1 = Seedling Sapling Poor	6 = Pole Timber Well
2 = Mixedling Sapling Medium	7 = Saw Timber Poor
3 = Seedling Sapling Well	8 = Saw Timber Medium
4 = Pole Timber Poor	9 = Saw Timber Well

Payment Unit Number	Acres
1	24.7
2	70
3	11.4
4	18.4
5	17.3

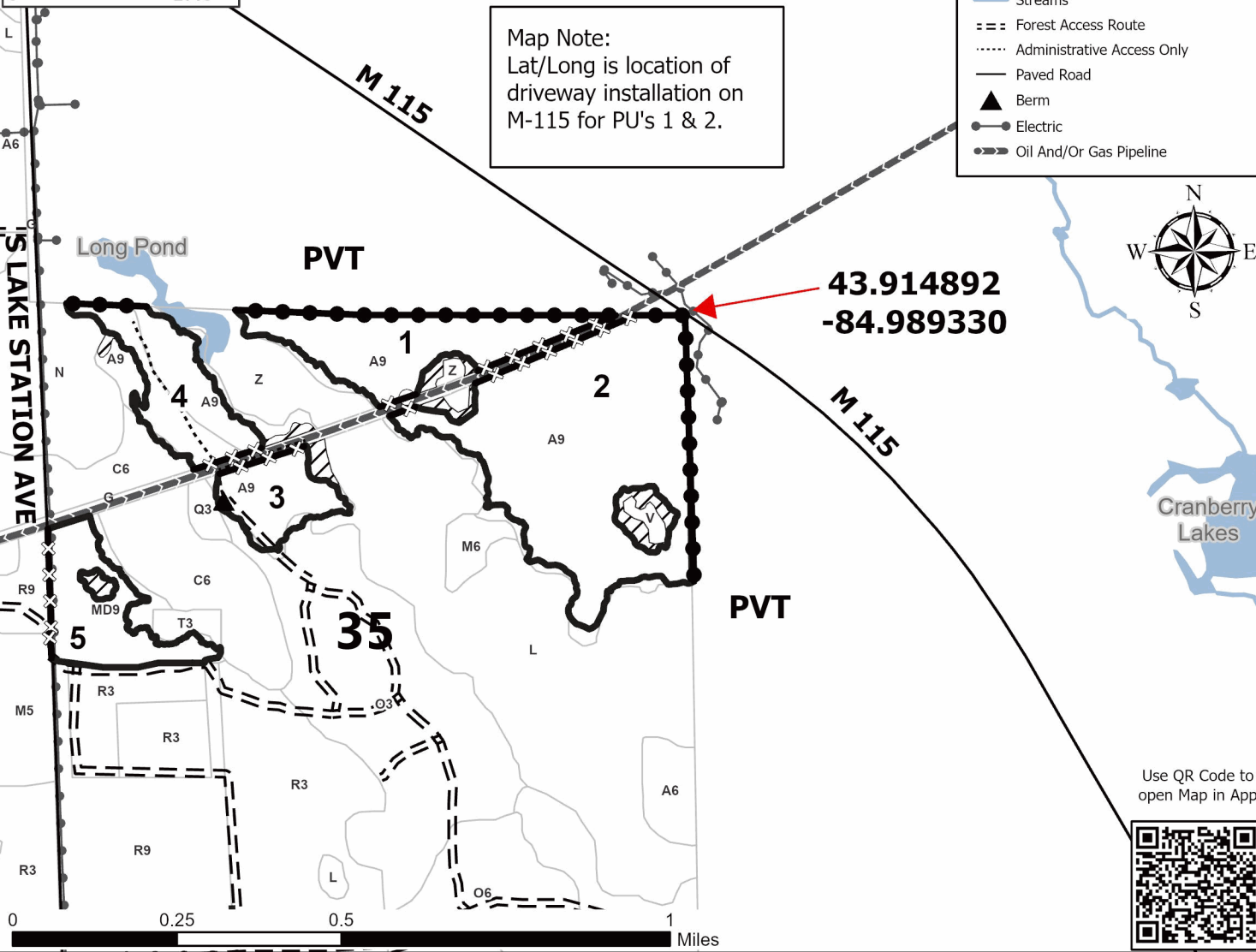
Grouse Buster Borough

141.8 Acres

PVT

Map Note:
Lat/Long is location of
driveway installation on
M-115 for PU's 1 & 2.

Legend	
	Payment Unit
	Lakes and Rivers
	Against State (Red)
	Against State (Unpainted)
	Against State (Cover Type Change)
	Private Line (Blue)
	Payment Unit (Unpainted)
	Streams
	Forest Access Route
	Administrative Access Only
	Paved Road
	Berm
	Electric
	Oil And/Or Gas Pipeline



TIMBER SALE INFORMATION

Yellow Jacket Megalopolis (73-011-25)
 T17N, R06W, SEC. 4; T18N, R06W, SEC. 32; T18N, R06W, SEC. 33.
 Clare County (Advertised Price \$53,039.00)

SALE NOTE: Tree list is available upon request.

A recreation site such as a trail, pathway, or campground is within the sale area or the vicinity. Certain restrictions/specifications may be applicable including time restrictions.

A timber sale contract for this lump sum, sealed bid timber sale will be awarded to the responsible bidder offering the highest sealed bid price. All units of volume listed below were estimated using the Inventory Manager computer program and the new Michigan taper model. Bids must be at or above the following advertised price for each product and species:

<u>PRODUCTS & SPECIES</u>	<u>ESTIMATED UNITS*</u>	<u>ADVERTISED PRICE</u>
Sawtimber		
B. T. Aspen	41.6 MBF	\$ 71.00 / MBF
Black/Red (Hybrid) Oak	209.9 MBF	\$ 168.00 / MBF
Red Maple	36.7 MBF	\$ 56.00 / MBF
White Oak	28.4 MBF	\$ 97.00 / MBF
Pulpwood		
B. T. Aspen	39 Cords	\$ 24.45 / Cord
Black Cherry	28 Cords	\$ 18.45 / Cord
Black/Red (Hybrid) Oak	198 Cords	\$ 22.20 / Cord
Red Maple	148 Cords	\$ 18.45 / Cord
Sugar Maple	25 Cords	\$ 18.45 / Cord
White Oak	43 Cords	\$ 22.20 / Cord

* The total volume is statistically estimated within plus (+) or minus (-) 21.40 percent. There are an estimated 1,228 cords on this timber sale, plus or minus 263 cords at the 95% confidence level. The estimated units are final and not subject to adjustment. Prospective bidders are urged to examine this timber and to make their own estimates of quantity and quality.

BOND AND PAYMENT SCHEDULE:

1. A bond in the amount of \$2,652.00 to insure faithful performance of the conditions of the contract will be deposited by the successful bidder within 21 days of the sale award.
2. Cutting in any sale or unit without the required advance payment would be considered a trespass.
3. Total payment must be paid in advance or according to the following schedule :
 - (a) Ten percent (10%) of the sale value must be paid within 21 days of the sale award.
 - (b) The 10% down payment will be credited towards the first unit cut.
 - (c) Payment for each of the following units must be made before cutting begins in that unit:

PAYMENT UNIT NUMBER	PERCENT OF TOTAL SALE VALUE
01	40.9%
02	59.1%
4. If no cutting takes place, the 10% down payment will not be refunded.
5. Operations on the contract issued will terminate on 06/30/2028.

SALE STATISTICS

Volumes were calculated in cubic feet using the Michigan taper model. Cubic foot volume includes all wood inside bark for the product indicated. For display purposes, cubic feet were converted to cords and MBF using a simple conversion factor, e.g. 79 cubic feet per cord and 185 cubic feet per MBF. The cubic foot volumes are precise; the cords and MBF volumes are not. Cubic foot volume cannot be directly converted to cords or boards with precision.

SALE VOLUMES

The total estimated sale volume may not equal the sum of the species/products due to the nature of statistical calculations associated with double sampling methodology.

VOLUME		STATISTICAL RANGE IN CORDS		
TOTAL CUBIC FEET	TOTAL CORDS	PERCENT ERROR	MINIMUM	MAXIMUM
96,989	1,228	21.40%	965	1,491

VDU VOLUMES

A VDU is a Volume Determination Unit. Volumes and their associated statistics are calculated at the VDU level and summarized to the sale level. There is often a one to one relationship between a VDU and a Payment Unit, but not always, depending on the cruise design. Refer to the VDU TO PAYMENT UNIT table.

VDU	VOLUME		PERCENT ERROR	RANGE IN CORDS	
	TOTAL CUBIC FEET	TOTAL CORDS		MINIMUM	MAXIMUM
176	34,627	438	38.78%	268	608
184	62,363	789	25.93%	585	994
TOTAL:	96,989	1,228		853	1,602

VDU TO PAYMENT UNIT

When a VDU is associated with more than one Payment Unit (PU), the VDU volumes are assigned to the PU based on acres of the VDU within the PU.

VDU	VDU ACRES	PU	PU ACRES
TOTAL:			

DESCRIPTION OF TIMBER BY PAYMENT UNIT (PU)

PU	MARKET GROUP	PRODUCT	QUANTITY	UNIT	ACRES	ADVERTISE PRICE
1	B. T. Aspen	Sawtimber	8.5	MBF	14.1	\$21,713.20
	Black/Red (Hybrid)		96.6	MBF		
	Red Maple		7.2	MBF		
	White Oak		17.3	MBF		
	B. T. Aspen	Pulpwood	12	Cords		
	Black Cherry		10	Cords		
	<i>Black Cherry</i>	<i>Sawtimber</i>	1.4	<i>MBF</i>		
	<i>Black Cherry</i>	<i>Pulpwood</i>	7	<i>Cords</i>		
	Black/Red (Hybrid)		57	Cords		
	Red Maple		38	Cords		
	White Oak		16	Cords		
2	B. T. Aspen	Sawtimber	33.1	MBF	32.9	\$31,325.80
	Black/Red (Hybrid)		113.3	MBF		
	Red Maple		29.5	MBF		
	White Oak		11.1	MBF		
	B. T. Aspen	Pulpwood	27	Cords		
	Black Cherry		18	Cords		
	<i>Black Cherry</i>	<i>Sawtimber</i>	3.9	<i>MBF</i>		
	<i>Black Cherry</i>	<i>Pulpwood</i>	10	<i>Cords</i>		
	Black/Red (Hybrid)		141	Cords		
	Red Maple		110	Cords		
	Sugar Maple		25	Cords		
	<i>Sugar Maple</i>	<i>Sawtimber</i>	7.6	<i>MBF</i>		
	<i>Sugar Maple</i>	<i>Pulpwood</i>	10	<i>Cords</i>		
	White Oak		27	Cords		
TOTAL:			316.6	MBF		
TOTAL:			481	Cords		

Sale Specific Conditions & Requirements

Sale Name: Yellow Jacket Megalopolis

Sale Number: 73-011-25 Seq#: 2

1 - Sale Area

1.2 - Boundaries

1.2.1 - Painted Boundaries (9/19)

The sale boundary and Payment Unit boundaries are marked and identified by blue and red paint. Exterior sale boundary lines against private property are marked with blue paint. Exterior sale boundary lines against state are marked with red paint. Retention patches are marked with red paint; no harvesting activities may occur within these areas. The painted boundary line trees are not Included Timber and are to be protected unless marked with orange paint.

2 - Timber Specifications

2.1 - Included Timber

2.1.1 - Clearcut Unit(s) with Unmerchantable Trees (6/14)

Within Payment Unit(s) 1, cut all trees that are two (2) inches or more at DBH, except conifer species.

2.1.7 - Leave Tree Marked Unit(s) (6/14)

Within Payment Unit(s) 2, cut all trees that are two (2) inches or more at DBH except conifer species and trees marked with green paint above and below stump height.

2.1.15 - Hazard Trees Near Roads (12/24)

Cut and remove all standing dead trees within 100 feet of the cleared portion of designated county roads. These trees may be utilized or must be scattered back into the Sale Area.

2.2 - Utilization

2.2.6 - Roundwood Operation Required (3/21)

The skidding of whole trees or tree segments with limbs attached is prohibited within Payment Unit 2. All products must be produced as roundwood and forwarded to existing roads or landing areas in final product length.

3 - Payments

3.3 - Pre-measured Sales

3.3.4 - Dividing Payment Units (7/14)

Payment Unit(s) may be divided at the request of the Purchaser and upon approval of the Unit Manager. Dividing Payment Units is a contract modification which requires a Timber Sale Contract Amendment. There will be only one division per Payment Unit.

3.4 - Damaged Timber

3.4.1 - Damaged Timber (12/24)

General Condition and Requirement 3.4 Damaged Timber, defines liquidated damages for undesignated live merchantable trees which are cut or injured. No damage is acceptable to undesignated live merchantable trees. Within the Sale Area, if more than 20% of trees (> 4.5" DBH) within a specified area of the sale are damaged, liquidated damages will be assessed for all trees damaged. Rates will be in accordance with General Condition and Requirement 3.4 Damaged Timber.

4 - Transportation

4.1 - Construction

4.1.12 - No New Roads (1/12)

No new roads will be permitted in any Payment Unit. All operations are limited to existing roads. Only skid trails will be allowed.

5 - Operations

5.1 - Notification

5.1.1 - Pre-sale Conference (10/25)

A pre-sale conference on site between the Purchaser and Sale Administrator is required prior to beginning any operations to determine landing and road locations. The Unit Manager or his/her representative must be contacted at least 3 days in advance to schedule the conference.

5.1.3 - Well Heads and Natural Gas Pipelines (11/15)

The Purchaser is responsible for contacting the gas or pipeline company prior to operating equipment in the vicinity of well heads or natural gas pipelines.

5.1.4 - Post-Sale Conference (10/16)

A post-sale conference on site between the Purchaser and sale administrator is required prior to the completion of active logging operations to determine clean-up and repair of landings, road edges, and the fulfillment of other contract specifications.

5.2 - Conduct of Operations

5.2.3 - Operating Restrictions

5.2.3.4 - Oak Wilt Restriction, No Exceptions (1/18)

Within Payment Unit 2, cutting, skidding, hauling within the sale and brushing of access roads to the sale are not permitted during the period of April 15 to July 15. No exceptions will be granted. This is necessary to reduce the spread of oak wilt.

5.2.3.5 - Oak Wilt Restriction (1/18)

Within Payment Unit 1, unless changed by written agreement, cutting, skidding, hauling within the sale and brushing of access roads to the sale are not permitted during the period of April 15 to July 15. Operations may be allowed if specific steps are taken to prevent damaging uncut oak during the high-risk period. Those steps may include completing all road brushing before April 15 and clearing a tree-length buffer along uncut oak cover before April 15. This is necessary to reduce the spread of oak wilt. For more information, contact the Unit Manager or his/her representative.

5.2.4 - Dead and Down Creation

5.2.4.4 - Dead and Down Creation, Grouse (6/18)

To encourage grouse and other wildlife, in Payment Unit(s) 1, leave one 12" or larger diameter whole tree on the ground for every three (3) acres. Trees should be scattered throughout the sale and at least two chains from any roads, two-tracks, or trails open to vehicles, or positioned per the Sale Administrator's instructions. Stumps must be at least three (3) feet tall.

5.2.32 - Decking/Landing Restoration (9/13)

All decking and landing areas must have the surface area restored to a condition equal to or better than before. This is to ensure the proper regeneration of the stand. Wood debris, chips and "cookies" from trimmings must be removed or scattered away from landing and loading areas and may not be windrowed on the edge.

5.2.38 - No Decking Against Live Trees (2/04)

Cut products may not be decked against unmarked or designated leave trees.

5.2.40 - Pathway Protection (10/10)

The Green Pine Pathway is a hiking trail and is shown on the Timber Sale Map. Do not cut trees or damage posts with blue pathway markers. Maintain a 20-foot-wide slash, debris, and rut free zone daily, using the pathway as the centerline. Do not run equipment down the pathway. Skidding across the trail may only occur in locations approved by the Sale Administrator.

6 - Safety and Fire Prevention

6.2 - Signing

6.2.1 - Road Posting (10/20)

The Purchaser is responsible for posting and maintaining caution signs on Poplar & Twin Lakes Ave prior to beginning operations. The road must be posted at appropriate distances from the Sale Area to warn of logging activity and truck traffic. Signs must be removed when harvest operations are suspended or completed. The Purchaser will provide these signs.



TIMBER SALE MAP

This information provided by authority of Part 525, 1994 PA 451, as amended.

Sale Number

73-011-25

Date

09/30/2025

Forest Management Unit

Gladwin Mgt Unit

County

Clare

Mapped By: Behrmann

Cruised By: Behrmann

Scale

1:7,920

Page

1

Of

1

Township
17N / 18N

Range
06W

Section(s) and

Subdivision(s) Sec. 32 E1/2SE; Sec. 33 W1/2SW; Sec. 4 NWNW;

Cover Type

A = Aspen	J = Jack Pine	O = Oak	U = Upland Brush
B = Paper Birch	K = Rock	P = Lowland Poplar	UM = Upland Mix Forest
C = Cedar	L = Lowland Brush	Q = Mixed Swamp Conifer	V = Bog or Marsh
D = Treed Bog	LM = Lowland Mix Forest	R = Red Pine	W = White Pine
E = Swamp Hardwoods	M = Maple, Beech, Birch	S = Black Spruce	X = Non Stocked
F = Spruce/Fir	MC = Mixed Conifer	T = Tamarack	Y = Sand
G = Grass	MD = Mixed Deciduous	Z = Water	
H = Hemlock	N = Marsh		

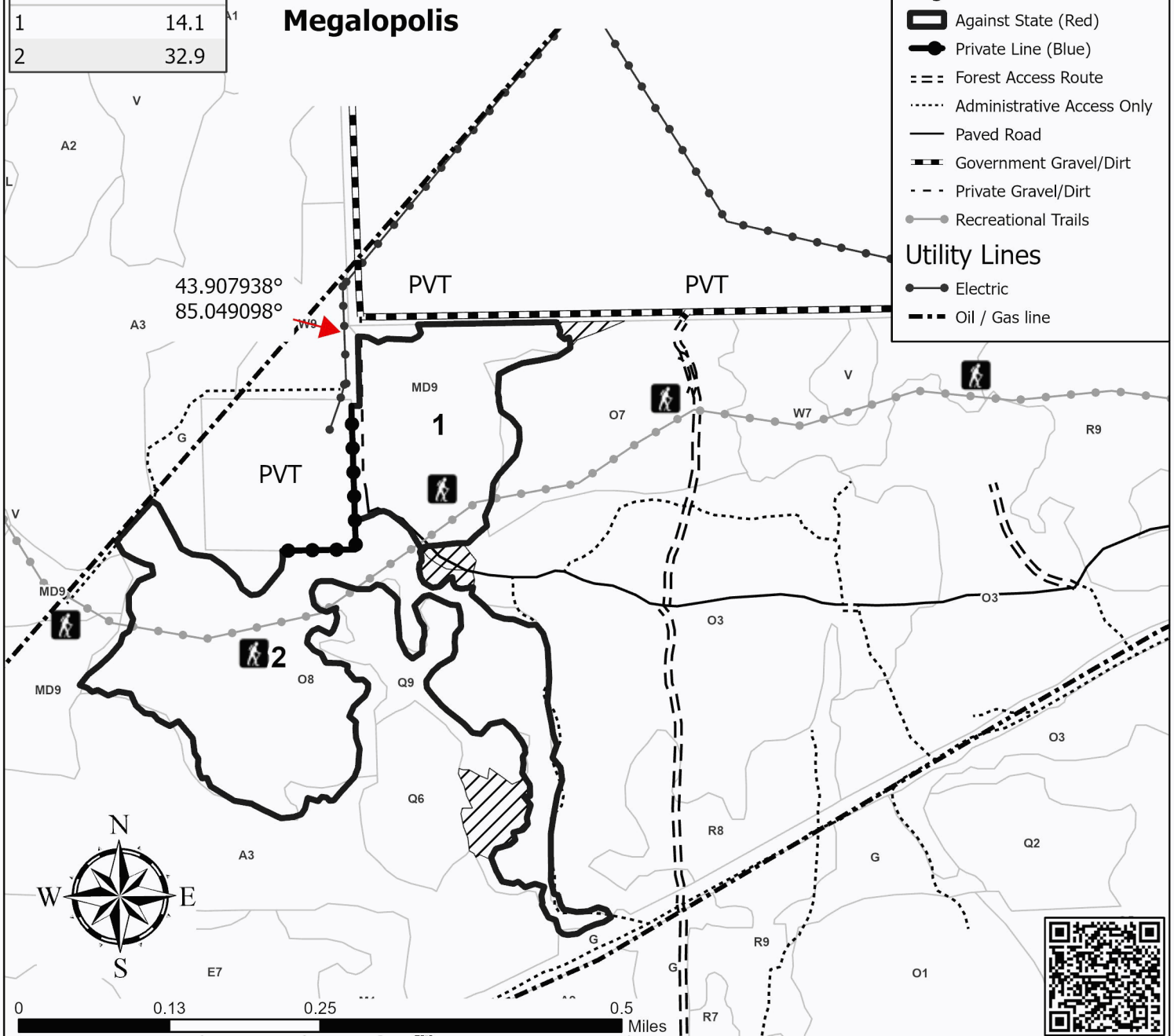
Density

0 = Non Stocked	5 = Pole Timber Medium
1 = Seedling Sapling Poor	6 = Pole Timber Well
2 = Seedling Sapling Medium	7 = Saw Timber Poor
3 = Seedling Sapling Well	8 = Saw Timber Medium
4 = Pole Timber Poor	9 = Saw Timber Well

Payment Unit Number	Acres
1	14.1
2	32.9

Yellow Jacket Megalopolis

47.0 Acres



Grouse Buster Borough (73-010-25)
T18N, R06W, SEC. 35; Clare COUNTY

In response to the notice of sale to be held 10:00 a.m. (local time) on June 17, 2026, I am hereby submitting my sealed bid (firm offer) for the following forest products to be cut. Bids for individual species must be at or above the advertised price. All non-responsive bid forms may be rejected.

<u>PRODUCTS & SPECIES</u>	<u>ESTIMATED VOLUME*</u>	<u>ADVERTISED PRICE</u>	<u>BID PRICE/UNIT</u>
Sawtimber			
B. T. Aspen	487.5 MBF	\$ 71.00/MBF	\$ _____
Black Cherry	20.5 MBF	\$ 144.00/MBF	\$ _____
Black/Red (Hybrid) Oak	495.9 MBF	\$ 168.00/MBF	\$ _____
Red Maple	270.3 MBF	\$ 56.00/MBF	\$ _____
White Oak	91.3 MBF	\$ 97.00/MBF	\$ _____
Pulpwood			
Balsam Fir	14 Cords	\$ 23.90/Cord	\$ _____
Mixed Aspen	1,131 Cords	\$ 24.45/Cord	\$ _____
Mixed Hardwood	1,428 Cords	\$ 18.45/Cord	\$ _____
Mixed Oak	846 Cords	\$ 22.20/Cord	\$ _____
Paper Birch	26 Cords	\$ 40.05/Cord	\$ _____
White Pine	25 Cords	\$ 25.95/Cord	\$ _____

*The volumes are statistically estimated within plus (+) or minus (-) 12.57 percent at 95% confidence level. These estimated volumes are final and not subject to adjustment. Prospective bidders are urged to examine this timber and to make their own estimates of quantity and quality.

I understand that any or all bids may be rejected. All bids must be signed and all bid items must be bid or the bid form may be rejected. I also understand that consideration and awarding a contract will be based upon my past performance and ability to complete the contract based upon equipment and staffing subject to my control .

FEDERAL ID: _____ or SOCIAL SECURITY NUMBER: _____

Company or individual bidding: _____

Company representative's name: _____

Address: _____

City: _____ State: _____ Zip: _____

IF AVAILABLE, PLEASE PLACE THE PERSONALIZED LABEL FROM YOUR PROSPECTUS IN THE ABOVE BOX.

Individual or company representative's signature: _____ Date: _____

Phone number : _____ Email (optional): _____

THE WINNING BIDDER MUST COMPLETE THE VERIFICATION OF WORKER'S DISABILITY COMPENSATION ACT COMPLIANCE (ON REVERSE SIDE IF DOUBLE SIDED) WITHIN 21 DAYS OF SALE AWARD DATE

Yellow Jacket Megalopolis (73-011-25)

T17N, R06W, SEC. 4; T18N, R06W, SEC. 32; T18N, R06W, SEC. 33; Clare

In response to the notice of sale to be held 10:00 a.m. (local time) on June 17, 2026, I am hereby submitting my sealed bid (firm offer) for the following forest products to be cut. Bids for individual species must be at or above the advertised price. All non-responsive bid forms may be rejected.

<u>PRODUCTS & SPECIES</u>	<u>ESTIMATED VOLUME*</u>	<u>ADVERTISED PRICE</u>	<u>BID PRICE/UNIT</u>
Sawtimber			
B. T. Aspen	41.6 MBF	\$ 71.00/MBF	\$ _____
Black/Red (Hybrid) Oak	209.9 MBF	\$ 168.00/MBF	\$ _____
Red Maple	36.7 MBF	\$ 56.00/MBF	\$ _____
White Oak	28.4 MBF	\$ 97.00/MBF	\$ _____
Pulpwood			
B. T. Aspen	39 Cords	\$ 24.45/Cord	\$ _____
Black Cherry	28 Cords	\$ 18.45/Cord	\$ _____
Black/Red (Hybrid) Oak	198 Cords	\$ 22.20/Cord	\$ _____
Red Maple	148 Cords	\$ 18.45/Cord	\$ _____
Sugar Maple	25 Cords	\$ 18.45/Cord	\$ _____
White Oak	43 Cords	\$ 22.20/Cord	\$ _____

*The volumes are statistically estimated within plus (+) or minus (-) 21.40 percent at 95% confidence level. These estimated volumes are final and not subject to adjustment. Prospective bidders are urged to examine this timber and to make their own estimates of quantity and quality.

I understand that any or all bids may be rejected. All bids must be signed and all bid items must be bid or the bid form may be rejected. I also understand that consideration and awarding a contract will be based upon my past performance and ability to complete the contract based upon equipment and staffing subject to my control.

FEDERAL ID: _____ or SOCIAL SECURITY NUMBER: _____

Company or individual bidding: _____

Company representative's name: _____

Address: _____

City: _____ State: _____ Zip: _____

IF AVAILABLE, PLEASE PLACE THE PERSONALIZED LABEL FROM YOUR PROSPECTUS IN THE ABOVE BOX.

Individual or company representative's signature: _____ Date: _____

Phone number : _____ Email (optional): _____

THE WINNING BIDDER MUST COMPLETE THE VERIFICATION OF WORKER'S DISABILITY COMPENSATION ACT COMPLIANCE (ON REVERSE SIDE IF DOUBLE SIDED) WITHIN 21 DAYS OF SALE AWARD DATE



FOR DEPARTMENT USE ONLY	
Sale Number (XX - XXX - XX - XX)	
Forest Management Unit:	

TIMBER SALE VERIFICATION OF WORKER'S DISABILITY COMPENSATION ACT COMPLIANCE

As required by Act 317, P.A. 1969 (Worker's Compensation) and
Part 5 of Act 451 of 1994, as amended.

VERIFICATION OF WORKER'S DISABILITY COMPENSATION ACT COMPLIANCE

- This verification must be completed and submitted within 21 days of contract award and prior to the issuance of the timber sale contract.
- In addition, if boxes 2B or 2C are checked, then Notice of Exclusion or Certificate of Insurance must be submitted within twenty-one (21) days of the contract award and prior to the issuance of the timber sale contract.
- All information must be typed or printed except for written signatures.

Please Check Appropriate Categories:

1. My business is organized as (you **must** check one of the boxes below):
 - A. Sole Proprietorship (individual)
 - B. Partnership
 - C. Corporation
2. You **must** check one of the boxes below:
 - A. I certify my business is a sole proprietorship and it has no employees but the sole proprietor. I am not subject to the Worker's Compensation Laws.
 - B. I certify my business has satisfied its obligation to the Worker's Compensation Act through the use of an approved Notice of Exclusion (BWC-337, Rev. 5/96). I will provide a copy of the Notice of Exclusion within 21 days of the contract award. (For questions or a copy of the BWC-337, please call the Worker's Compensation Bureau at 517 -322-1195).
 - C. I certify my business has a Worker's Compensation Policy. I will provide an original Certificate of Insurance within twenty-one (21) days of the contract award.
3. If you have checked item 2(A) or 2(B), you **must** indicate the number of **both** full-time and part-time employees, other than yourself, including family members and active partners (if none, you must enter "0").

_____ Full-time Employees

_____ Part-time Employees

Name of Business		Federal ID (or) Social Security No.	
Address		Telephone ()	
City	State	ZIP	

I hereby certify that the above information is true and correct. I agree to notify the Michigan DNR of any changes that occur in factors affecting my coverage during any of my present and future operations.

Signature of Owner or Authorized Representative

Title

Date

Please complete the "SEALED BID" information on the next page