



**DEPARTMENT OF NATURAL RESOURCES  
STATE OF MICHIGAN  
TIMBER SALE PROSPECTUS #7797**

SCHEDULED SALE DATE AND TIME: 3:00 p.m. (local time) on May 7, 2026.

LOCATION: NEWBERRY MGMT UNIT, 5666 S STATE HWY M 123, NEWBERRY, MI 49868.

PROSPECTUS NOTE: The bidder is advised to inspect the sale area and review the location, estimated volumes, operating costs and contract terms of proposed sales. Please be aware that some landowners may request 60 days or more notice for access across their land.

Notice is hereby given that bids will be received by the Unit Manager, NEWBERRY MANAGEMENT UNIT, for certain timber on the following described lands:

Sage Country Hardwoods (42-020-25) / T45N, R07W, SEC. 30, SESW,SWSE.

T45N, R07W, SEC. 31, S1/2NW,N1/2SW.

T45N, R08W, SEC. 36, NENW,S1/2NW,NE,W1/2SW.

Luce County, Advertised Price \$45,508.10, 153.1 Acres, Hardwood, Aspen.

SALE NOTE: Roads may require the installation of culverts for cross drainage or at natural drainage-ways. See Sale Spec 4.1.5 for details.

Within Payment Unit(s) 4 - 6, harvesting is limited to the period December 15 to March 31 due to deer winter range and wet areas within the sale. Additionally, Within Payment Unit(s) 1-3 and 7-9, harvesting is limited to the period of October 1 to March 31 because tops will provide wintering food.

Sage Combo Mix (42-021-25) / T44N, R08W, SEC. 1 , N1/2NE.

T45N, R07W, SEC. 31, SENE,E1/2SE.

T45N, R07W, SEC. 32, SWNW,W1/2SW.

T45N, R08W, SEC. 36, SE.

Chippewa County, Advertised Price \$37,036.80, 112.6 Acres, Spruce/Fir/Tamarack, Aspen.

SALE NOTE: Roads may require the installation of culverts for cross drainage or at natural drainage-ways. See Sale Spec 4.1.5 for details.

Within Payment Unit(s) 1, 2, 4, and 5, harvesting is limited to the period of October 1 to April because of winter deer range.

Some roads or skid trails may require extra protection such as that afforded by timber mats , interlocking composite mats, or another approved system. See Sale Spec 5.2.17 for additional information.

## BID INSTRUCTIONS (VER. 10/10/2022):

### 1. Scheduled Bid Location, Date, and Time (2/11)

Bids must be received by the Unit Manager, NEWBERRY OFFICE, 5666 S STATE HWY M 123, NEWBERRY, MI 49868, no later than 3:00 p.m. (local time) on May 7, 2026. For further information concerning this sale, contact Keith Magnusson at 906-291-0120 extension n/a.

### 2. Bidder's Qualifications (10/22)

If all or part of a timber sale was prepared by a private contractor, the contractor and that contractor's company are not permitted to bid on the timber sale. A person must be 18 years of age or older to purchase timber. Permanent employees of the Department of Natural Resources or members of their immediate household may not bid. Former employees, in the permanent or seasonal class, may not bid until 3 months after the last day of active duty. Bids will not be accepted from individuals or companies appearing on the DNR/FRD No-Bid List. This list contains the names of purchasers who previously failed to execute a contract within 21-days or who have a history of poor performance.

### 3. Preparation of Sealed Bids (5/16)

Bid Forms may be completed online thru Michigan DNR Timber Sale Online Bidding (OLB) at [www.michigan.gov/timberbidding](http://www.michigan.gov/timberbidding) or by completing the hardcopy Bid Form found in the Timber Sale Prospectus. Hardcopy Bid Forms shall be manually signed in ink. Registration in OLB is considered your 'signature' for all bids submitted thru that system. Bid prices must be entered for each species and product in the Bid Price column for all material subject to bidding and all fill-in blanks must be completed. If erasures or other changes appear on the hardcopy Bid Form, each erasure or change must be initialed by the person signing the bid.

### 4. Submission of Sealed Bids (5/16)

Bid forms may be obtained from the Unit Manager or thru OLB. Bids may be submitted hardcopy or thru OLB. All hardcopy bids must be submitted on the bid form and in an envelope clearly identified as described in this section. NOTE: Only one bid form per bid envelope. Sealed bids must be submitted to the Unit office designated in the prospectus and must be submitted at or prior to the time established in the prospectus. The envelope should show on the outside (a) the sale name or number and (b) the date and time of bid opening, as shown in the prospectus. Bids received after the time specified in the sale prospectus are late bids and will be rejected.

It is possible for a bidder to submit multiple bids on a single sale. For example, a bid may be submitted hardcopy and a bid may be submitted thru OLB. Or, two bidders from the same company could both submit bids on the same sale. If this were to happen, the State would accept all bids received and award the contract accordingly. All bidding and contractual requirements would apply to all bids received.

### 5. Public Opening of Sealed Bids (7/16)

If conditions permit, the sealed bids will be publicly opened and posted at the time and place set in the prospectus.

If a bidder, present at a bid opening, has submitted bids on more than one sale, that bidder may withdraw their unopened bid envelopes or announce the withdrawal of their online bid after being declared the successful bidder on one sale.

### 6. Award of Contract (1/11)

Award of the contract will be made to the Bidder whose bid, conforming to the prospectus, is most advantageous to the State of Michigan on the basis of total value at rates bid for the estimated quantities. The State reserves the right to reject any bid or waive any minor irregularity in bids received. A written award mailed (or otherwise furnished) to the successful Bidder shall be deemed to result in a binding contract without further action by either party.

### 7. Down Payment (1/11)

The Bidder to whom award is made must make a down payment within 21 days of the sale award. The amount of the down payment will be calculated as shown in the Bond and Payment Schedule of this prospectus. Only cash may be used to meet this requirement.

### 8. Performance Security (1/11)

As guarantee of faithful performance, a cash bond, certificate of deposit, surety bond or irrevocable letter of credit (LOC) is required within 21 days of the sale award. The amount of the performance security is shown in the Bond and

Payment Schedule of this prospectus. If an LOC or surety is used, the coverage must extend for at least 6 months beyond the contract expiration.

#### 9. Worker's Compensation (10/22)

Purchaser shall obtain worker's compensation insurance to cover claims under Michigan's Worker's Disability Compensation Act of 1969 or similar employee benefit act of any other state applicable to an employee. Verification of Worker's Disability Compensation Act Compliance must be completed and submitted within 21 days of contract award and prior to the issuance of the timber sale contract. In addition, if applicable, Notice of Exclusion or Certificate of Insurance must also be submitted.

#### 10. Timber Sale Contract (10/22)

Additional conditions and requirements common to all timber sales are listed on the timber sale contract (R4031) and are available on line at [www.michigan.gov/timber](http://www.michigan.gov/timber). Contact the Unit Manager for additional information or a sample contract. Within 21 days of the date of the award letter, the bidder must sign the contract and provide the required down payment, performance security, and verification of worker's disability compensation. The down payment and performance security shall be in accordance with the provisions of the timber sale contract, in the sums stated in this prospectus. If these actions are not taken, then the Bidder, the Bidder's corporation, and the corporation's principals may not be permitted to bid on State timber sales for a period of 3 months after the first offense, 6 months after the second offense, and 1 year after the third offense. An offense will only be counted against the Bidder for 5 years. In addition, the Bidder certifies that if awarded this contract, the Bidder will complete the timber sale contract in accordance with its terms and any modifications thereof including requirements to purchase, cut, and remove the included timber by the expiration date.

Payment Unit values in the State Forest Timber Sale Contract are calculated based on the advertised value of the Payment Unit as a percentage of the total advertised value of the contract. The advertised value of each Payment Unit is given in the Description of Timber by Payment Unit table on the Timber Sale Information page. For example, if the value of Payment Unit 1 is advertised as \$1,500 and the total Timber Sale value is advertised as \$10,000, the contract price for Payment Unit 1 will be 15% of the total bid price ( $\$1,500/\$10,000 * 100$ ).

#### 11. Disclaimer of Estimates and Bidder's Warranty of Inspection (10/22)

Before submitting this bid, the Bidder is advised and cautioned to inspect the sale area, review the requirements of the sale contract, and take other steps as may be reasonably necessary to ascertain the location, estimated volumes, construction estimates, and operating costs of the proposed sale. Failure to do so will not relieve the Bidder from responsibility for completing the contract.

The Bidder warrants that this bid is submitted solely on the basis of the Bidder's examination and inspection of the quality and quantity of the timber offered for sale and the Bidder's opinion of the value thereof and the costs of recovery. No reliance should be placed on the State of Michigan's estimates of timber quality, quantity or costs of recovery. Bidder further acknowledges that the State of Michigan: (i) expressly disclaims any warranty of fitness of timber for any purpose; (ii) offers this timber as is without any warranty of quality (merchantability) or quantity and (iii) expressly disclaims any warranty as to the quantity or quality of timber sold.

#### 12. Certification and Chain-of-Custody (10/22)

Unless otherwise indicated in the contract under section 7 – Other Conditions of the Sale Specific Conditions & Requirements, the area encompassed by this timber sale is certified to the standards of the Forest Stewardship Council (FSC) - Certificate #SCS-FM/COC-00090N and the Sustainable Forestry Initiative (SFI) - Certificate #NSF-SFIS-5Y031-SF5. Forest products from this sale may be delivered to the mill as "FSC 100% and / or SFI certified" as long as the contractor hauling the forest products is chain-of-custody (COC) certified or covered under a COC certificate from the destination mill. The purchaser is responsible for maintaining COC after leaving the sale area.

#### 13. Good Neighbor Authority (GNA) Requirements (10/22)

If the name of this timber sales contains the acronym GNA, it is authorized by the Good Neighbor Authority (GNA) and covered by various agreements between the U.S. Forest Service and the State. The timber sale occurs on federal land and the following conditions apply:

GNA contracts on US Forest Service land will not be awarded to purchasers on the Federal list of excluded parties. The System for Award Management (SAM) will be checked for active excluded parties prior to award of contract. In

addition, the Bidder to whom award is made must complete an Assurance Regarding Felony Conviction or Tax Delinquent Status for Corporate Applicants (AD-3031).

14. Good Neighbor Authority (GNA) Requirements, con't (10/22)

Bidder certifies, by signing this bid form, that to the best of Bidder's knowledge that the following representations are accurate and complete.

- a. That the Bidder and its principals are not presently debarred, suspended, proposed for debarment, declared ineligible, or voluntary excluded from timber sales (covered transactions) by any Federal department or agency.
- b. That the Bidder and its principals have not within a 3-year period preceding this bid been convicted of or had a civil judgment rendered against them for commission of fraud or a criminal offense in connection with obtaining , attempting to obtain, or performing a public (Federal, State, or local) transaction or contract under a public transaction; violation of Federal or State antitrust statutes or commission of embezzlement, theft, forgery, bribery, falsification or destruction of records, making false statements, or receiving stolen property.
- c. That the Bidder and its principals are not presently indicted for or otherwise criminally or civilly charged by a governmental entity (Federal, State, or local) with commission of any of the offenses enumerated in paragraph b of this certification.
- d. That the Bidder and its principals have not within a 3-year period preceding this bid had one or more public transactions (Federal, State, or local) terminated for breach or default of a timber or forest product contract.

Bidders that cannot certify this requirement, in whole or in part, shall submit an explanation with their bid.

Scott Bowen  
Director

## TIMBER SALE INFORMATION

Sage Country Hardwoods (42-020-25)  
T45N, R07W, SEC. 30; T45N, R07W, SEC. 31; T45N, R08W, SEC. 36.  
Luce County (Advertised Price \$45,508.10)

SALE NOTE: Roads may require the installation of culverts for cross drainage or at natural drainage-ways. See Sale Spec 4.1.5 for details.

Within Payment Unit(s) 4 - 6, harvesting is limited to the period December 15 to March 31 due to deer winter range and wet areas within the sale. Additionally, Within Payment Unit(s) 1-3 and 7-9, harvesting is limited to the period of October 1 to March 31 because tops will provide wintering food.

A timber sale contract for this lump sum, sealed bid timber sale will be awarded to the responsible bidder offering the highest sealed bid price. All units of volume listed below were estimated using the Inventory Manager computer program and the new Michigan taper model. Bids must be at or above the following advertised price for each product and species:

<u>PRODUCTS &amp; SPECIES</u>	<u>ESTIMATED UNITS*</u>	<u>ADVERTISED PRICE</u>
Sawtimber		
Red Maple	78.2 MBF	\$ 35.00 / MBF
Sugar Maple	90.7 MBF	\$ 314.00 / MBF
Pulpwood		
Balsam Fir	182 Cords	\$ 4.95 / Cord
Mixed Aspen	280 Cords	\$ 13.90 / Cord
Mixed Hardwood	1,422 Cords	\$ 6.50 / Cord
Mixed Spruce	44 Cords	\$ 3.20 / Cord
N. White Cedar	18 Cords	\$ 2.40 / Cord
White Pine	6 Cords	\$ 11.90 / Cord

\* The total volume is statistically estimated within plus (+) or minus (-) 14.09 percent. There are an estimated 2,348 cords on this timber sale, plus or minus 331 cords at the 95% confidence level. The estimated units are final and not subject to adjustment. Prospective bidders are urged to examine this timber and to make their own estimates of quantity and quality.

### **BOND AND PAYMENT SCHEDULE:**

1. A bond in the amount of \$2,275.00 to insure faithful performance of the conditions of the contract will be deposited by the successful bidder within 21 days of the sale award.
2. Cutting in any sale or unit without the required advance payment would be considered a trespass.
3. Total payment must be paid in advance or according to the following schedule :
  - (a) Ten percent (10%) of the sale value must be paid within 21 days of the sale award.
  - (b) The 10% down payment will be credited towards the first unit cut.
  - (c) Payment for each of the following units must be made before cutting begins in that unit:

PAYMENT UNIT NUMBER	PERCENT OF TOTAL SALE VALUE
01	9.2%
02	27.4%
03	26.1%
04	6.2%
05	17.1%
06	5.6%
07	1.7%
08	3.8%
09	2.9%

4. If no cutting takes place, the 10% down payment will not be refunded.
5. Operations on the contract issued will terminate on 06/30/2030.

### **SALE STATISTICS**

Volumes were calculated in cubic feet using the Michigan taper model. Cubic foot volume includes all wood inside bark for the product indicated. For display purposes, cubic feet were converted to cords and MBF using a simple conversion factor, e.g. 79 cubic feet per cord and 185 cubic feet per MBF. The cubic foot volumes are precise; the cords and MBF volumes are not. Cubic foot volume cannot be directly converted to cords or boards with precision.

## SALE VOLUMES

The total estimated sale volume may not equal the sum of the species/products due to the nature of statistical calculations associated with double sampling methodology.

VOLUME			STATISTICAL RANGE IN CORDS	
TOTAL CUBIC FEET	TOTAL CORDS	PERCENT ERROR	MINIMUM	MAXIMUM
185,453	2,348	14.09%	2,017	2,678

## VDU VOLUMES

A VDU is a Volume Determination Unit. Volumes and their associated statistics are calculated at the VDU level and summarized to the sale level. There is often a one to one relationship between a VDU and a Payment Unit, but not always, depending on the cruise design. Refer to the VDU TO PAYMENT UNIT table.

	VOLUME			RANGE IN CORDS	
VDU	TOTAL CUBIC FEET	TOTAL CORDS	PERCENT ERROR	MINIMUM	MAXIMUM
29	16,730	212	60.62%	83	340
30	13,874	176	49.17%	89	262
31	16,228	205	60.81%	81	330
47	20,091	254	32.11%	173	336
54	17,663	224	30.56%	155	292
105	22,292	282	35.14%	183	381
107	13,593	172	62.36%	65	279
125	64,983	823	25.61%	612	1,033
<b>TOTAL:</b>	<b>185,453</b>	<b>2,348</b>		<b>1,441</b>	<b>3,254</b>

## VDU TO PAYMENT UNIT

When a VDU is associated with more than one Payment Unit (PU), the VDU volumes are assigned to the PU based on acres of the VDU within the PU.

VDU	VDU ACRES	PU	PU ACRES
<b>TOTAL:</b>			

**DESCRIPTION OF TIMBER BY PAYMENT UNIT (PU)**

PU	MARKET GROUP	PRODUCT	QUANTITY	UNIT	ACRES	ADVERTISE PRICE
1	Balsam Fir Mixed Aspen <i>Balsam Poplar</i> <i>Quaking Aspen</i> Mixed Hardwood <i>Beech</i> <i>Black Cherry</i> <i>Paper Birch</i> <i>Red Maple</i> <i>Sugar Maple</i> <i>White Ash</i> White Pine	Pulpwood	14 166 20 146 270 10 19 69 104 62 6 6	Cords Cords Cords Cords Cords Cords Cords Cords Cords Cords Cords Cords	14.4	\$4,203.10
2	Red Maple Sugar Maple Mixed Hardwood <i>Beech</i> <i>Red Maple</i> <i>Sugar Maple</i>	Sawtimber  Pulpwood	27.6 30.7 284 10 170 104	MBF MBF Cords Cords Cords Cords	35.0	\$12,451.80
3	Red Maple Sugar Maple Mixed Hardwood <i>Beech</i> <i>Red Maple</i> <i>Sugar Maple</i>	Sawtimber  Pulpwood	26.4 29.3 271 10 162 99	MBF MBF Cords Cords Cords Cords	33.4	\$11,885.70
4	Sugar Maple Balsam Fir Mixed Aspen <i>Quaking Aspen</i> Mixed Hardwood <i>Red Maple</i> <i>Sugar Maple</i> Mixed Spruce <i>White Spruce</i> N. White Cedar	Sawtimber Pulpwood	3.8 33 67 67 76 62 14 17 17 3	MBF Cords Cords Cords Cords Cords Cords Cords Cords Cords	5.0	\$2,843.45
5	Sugar Maple Balsam Fir Mixed Aspen <i>Quaking Aspen</i> Mixed Hardwood <i>Black Cherry</i> <i>Red Maple</i> <i>Sugar Maple</i> Mixed Spruce <i>White Spruce</i>	Sawtimber Pulpwood	20.5 17 41 41 101 14 5 82 5 5	MBF Cords Cords Cords Cords Cords Cords Cords Cords Cords	5.8	\$7,763.55
6	Red Maple Sugar Maple Balsam Fir Mixed Aspen <i>Quaking Aspen</i> Mixed Hardwood <i>Red Maple</i> <i>Sugar Maple</i> Mixed Spruce <i>White Spruce</i>	Sawtimber  Pulpwood	7.9 4.2 15 6 6 118 79 39 8 8	MBF MBF Cords Cords Cords Cords Cords Cords Cords Cords	14.5	\$2,545.55
7	Red Maple	Sawtimber	4.4	MBF	9.8	\$789.05

**DESCRIPTION OF TIMBER BY PAYMENT UNIT (PU), CON'T**

PU	MARKET GROUP	PRODUCT	QUANTITY	UNIT	ACRES	ADVERTISE PRICE
7 con't	Sugar Maple	Sawtimber	0.7	MBF		
	Balsam Fir	Pulpwood	13	Cords		
	Mixed Hardwood		53	Cords		
	<i>Red Maple</i>		43	<i>Cords</i>		
	<i>Sugar Maple</i>		10	<i>Cords</i>		
	Mixed Spruce		2	Cords		
	<i>White Spruce</i>		2	<i>Cords</i>		
8	Red Maple	Sawtimber	9.7	MBF	21.8	\$1,719.20
	Sugar Maple		1.5	MBF		
	Balsam Fir	Pulpwood	28	Cords		
	Mixed Hardwood		117	Cords		
	<i>Red Maple</i>		95	<i>Cords</i>		
	<i>Sugar Maple</i>		22	<i>Cords</i>		
	Mixed Spruce		3	Cords		
	<i>White Spruce</i>		3	<i>Cords</i>		
9	Red Maple	Sawtimber	2.2	MBF	13.4	\$1,306.70
	Balsam Fir	Pulpwood	62	Cords		
	Mixed Hardwood		132	Cords		
	<i>Red Maple</i>		132	<i>Cords</i>		
	Mixed Spruce		9	Cords		
	<i>Black Spruce</i>		3	<i>Cords</i>		
	<i>White Spruce</i>		6	<i>Cords</i>		
	N. White Cedar		15	Cords		
	TOTAL:			168.9		
TOTAL:			1,952	Cords		

# Sale Specific Conditions & Requirements

**Sale Name: Sage Country Hardwoods**

**Sale Number: 42-020-25 Seq#: 1**

## 1 - Sale Area

### 1.2 - Boundaries

#### 1.2.1 - Painted Boundaries (9/19)

The sale boundary and Payment Unit boundaries are marked and identified by blue, red and yellow paint. Exterior sale boundary lines against private property are marked with blue paint. Exterior sale boundary lines against state are marked with red paint. Interior Payment Unit boundaries are marked with yellow paint. Retention patches are marked with red paint; no harvesting activities may occur within these areas. The painted boundary line trees are not Included Timber and are to be protected unless marked with orange paint. Yellow painted trees designating an interior Payment Unit boundary are only to be cut when all surrounding Payment Units have been paid.

## 2 - Timber Specifications

### 2.1 - Included Timber

#### 2.1.2 - Clearcut Unit(s) w/o Unmerchantable Trees (8/11)

Within Payment Unit(s) 1, 4 and 5, cut all trees which meet minimum piece specifications in 2.2 Utilization. Exception: Do not cut any hemlock or oak that may exist in these Payment Units.

#### 2.1.3 - Cut Tree Marked Unit(s) (12/08)

Within Payment Unit(s) 2, 3, 6, 7 and 8, all trees are designated for cutting when marked with orange paint above and below stump height, regardless of merchantability.

Within Payment Units 2 and 3, do not cut any hemlock or oak.

Within Payment Units 6, 7, 8, do not cut any white pine or hemlock.

Within Payment Unit 6, cut all aspen.

#### 2.1.7 - Leave Tree Marked Unit(s) (6/14)

Within Payment Unit(s) # 9, all trees, which meet minimum piece specifications in 2.2 Utilization, are designated for cutting except trees marked with green paint above and below stump height. Do not cut any white pine and hemlock.

### 2.2 - Utilization

#### 2.2.9 - No Chipping Permitted (12/08)

Within Payment Unit(s) 1-9, all wood must be removed by whole tree, tree segment, or roundwood. No chipping is permitted.

## 4 - Transportation

### 4.1 - Construction

#### 4.1.4 - Timber Removed for Construction (3/23)

Trees cut or damaged in the process of pre-approved road, landing, or skid trail construction will be decked in an area separate from other Designated Timber and not removed until measured by the Sale Administrator. Payment will be made at contract prices or average prices, if not on the contract.

#### 4.1.5 - Culverts (5/14)

Roads may require the installation of culverts for cross drainage or at natural drainage-ways. If culverts are needed in these locations, their placement will be specified by the Sale Administrator, and they shall be installed prior to hauling. The culverts shall be new, corrugated metal. Culverts will be a minimum of 12 inches in diameter and 24 feet in length. If culverts are removed, fill shall be removed from wetland soils as specified. Soils shall be maintained and left in a non-erodible condition, with water bars, seed, fertilizer, mulch, and slash installed as directed by the Sale Administrator and as specified in the BMP manual. Stream crossing permits, if needed, will be obtained by the DNR.

#### 4.1.6 - Road Construction (4/24)

Construction of new roads or improvements of existing roads shall be done in such a way as to minimize the environmental and visual impacts. Merchantable trees shall be cut and utilized unless otherwise directed. Non-merchantable trees shall be

severed and laid flat on the ground. Slash shall be scattered, not left in windrows, and kept a minimum of 10 feet back from the road edge. Stumps shall be set upright, not left on edge, and be moved at least 10 feet away from the road edge. Disturbed soil shall be feathered into the woods and not left in berms or windrows.

#### 4.1.7 - Road Closure (10/11)

All new roads built into the sale must be blocked to vehicle traffic upon completion of the sale. Overgrown roads that are reopened shall be considered new roads. In general, this will require constructing a four (4') foot high berm of stumps and logs covered with earth. All stumps from road building and landing construction must be reserved to block any newly constructed roads upon completion of the sale. These stumps must be scattered along the road system to prohibit vehicular movement. Contact the Sale Administrator for specific details of design and placement.

### 4.2 - Maintenance

#### 4.2.1 - Hauling Restriction (12/08)

Hauling is restricted on the Dinkey Line Road south of the Giddings Road by the Mackinac County Road Commission. This road segment is weight restricted year-round. The restriction may be lifted by the County during winter months when frozen. A permit will be necessary from the Mackinac County Road Commission.

#### 4.2.4 - Grading (10/16)

For completion of the sale, state forest roads must be graded. In general, this will require a road grader or bulldozer to shape up the roads after forest products have been hauled off site. This includes cleaning of drainage areas, grading, crowning and filling with gravel, if necessary. The grading equipment to be used must be approved by the Unit Manager or his/her representative.

## 5 - Operations

### 5.2 - Conduct of Operations

#### 5.2.2 - Hazard Trees/Snags

##### 5.2.2.1 - Den Trees (10/16)

Obvious hollow and/or den trees shall be protected and left standing unless they are a safety hazard.

#### 5.2.3 - Operating Restrictions

##### 5.2.3.1 - Operating Restrictions (9/11)

Within Payment Unit(s) 4 - 6, unless changed by written agreement, cutting, skidding, and hauling are limited to the period December 15 to March 31. This restriction is due to deer winter range and wet areas within the sale.

##### 5.2.3.2 - Operating Restrictions (9/11)

Within Payment Unit(s) 1-3 and 7-9, unless changed by written agreement, cutting is limited to the period of October 1 to March 31. This restriction is because tops will provide wintering food.

#### 5.2.32 - Decking/Landing Restoration (9/13)

All decking and landing areas must have the surface area restored to a condition equal to or better than before. This is to ensure the proper regeneration of the stand. Wood debris, chips and "cookies" from trimmings must be removed or scattered away from landing and loading areas and may not be windrowed on the edge.

#### 5.2.38 - No Decking Against Live Trees (2/04)

Cut products may not be decked against unmarked or designated leave trees.

### 5.3 - Stream Protection

#### 5.3.1 - Operating Near Stream (1/25)

No tracked or wheeled vehicles shall be operated within 50 feet of a creek or stream, except at an approved crossing.

#### 5.3.2 - Parking Equipment Near Water (10/23)

Within Payment Unit(s) that have intermittent streams or surface flow of water the parking of or storage of equipment is prohibited within 100 feet of water bodies or ground water supplies. All equipment, when not in use for harvest operations, must be parked a minimum of 100 feet away from water sources (streams, rivers, lakes, ponds, vernal pools, ground water sources) and 50 feet away from slopes leading to water sources and/or riparian areas. This restriction is for preventing unforeseen oil and/or fluid leaks from contaminating water bodies and/or ground water supplies.

## 5.4 - Soil Protection

### 5.4.1 - Rutting Restriction, General (7/16)

The Unit Manager or his/her representative may restrict hauling and/or skidding if ruts exceed the specified depth. With the Unit Manager or his/her representative's approval, the Purchaser may return to the area when the risk of rutting has decreased.

### 5.4.2 - Skid Trails (2/04)

Skid trails up and down slopes should be avoided. If, however, this is unavoidable, these trails will be left in a non-erodible condition using water bars, logs, and slash. Placing of slash on these skid trails while logging is ongoing may alleviate need for any further action. At the direction of the Sale Administrator, seed, fertilizer, and mulch may also be required.

### 5.4.4 - Slope Protection (9/19)

Skid trails and roads on slopes shall be water barred with slash and stumps as soon as use is complete to prevent erosion.

### 5.4.5 - Soil Caution (11/04)

Care must be taken to minimize soil damage due to the heavy soils.

### 5.4.6 - Wet Area Protection (5/10)

No harvesting operations, including skidding and felling, are to take place within drainages holding water or vernal ponds that exist within the sale. When harvesting occurs, there should be no disturbance to the vernal pond depression. All equipment, trees and tops should be kept out of this area. Within 100 feet of the pond, equipment should only be used when the soil is in a dry or frozen condition. Care must be taken by the Purchaser to identify and avoid operating in these areas of the timber sale.

### 5.4.7 - Rutting Restriction, Riparian Management Zone (RMZ) (1/25)

Within the Riparian Management Zone (RMZ), as shown on the attached Timber Sale Map, operations are to cease immediately if equipment and weather conditions result in rutting of roads which are six (6) inches or greater in depth and 25 feet in length. In addition, operations are to cease immediately if equipment and weather conditions result in rutting of skid trails which are six (6) inches or greater in depth and 25 feet in length. The Unit Manager or his/her representative may restrict hauling and/or skidding if ruts exceed the specified depth. With the Unit Manager or his/her representative's approval, the Purchaser may return to the area when the risk of rutting has decreased.

## 5.8 - Protection of Endangered Species

### 5.8.5 - Protection of Raptor Nests (3/13)

All trees with raptor nests will be protected if found during harvesting operations. Notification will be made to the Unit Manager or his/her representative who will notify the Wildlife Biologist so an onsite evaluation and recommendation can be made, if necessary.

## 6 - Safety and Fire Prevention

### 6.2 - Signing

#### 6.2.1 - Road Posting (10/20)

The Purchaser is responsible for posting and maintaining caution signs on Dinkey Line and Giddings Roads. prior to beginning operations. The road must be posted at appropriate distances from the Sale Area to warn of logging activity and truck traffic. Signs must be removed when harvest operations are suspended or completed. The Purchaser will provide these signs.



### TIMBER SALE MAP

This information provided by authority of Part 525, 1994 PA 451, as amended.

Sale Number	Date	
<b>42-020-25</b>	09/16/2025	
Scale	Page	Of
1:15,840	1	1

Forest Management Unit	County	Mapped By: Matt Payment
Newberry Mgt Unit	Luce Chippewa	Cruised By: Grossman Forestry

Township	Range	Section(s) and Subdivision(s)
45N	07W / 8	Sec. 30 SESW,SWSE; Sec. 31 S1/2NW,N1/2SW; Sec. 36 NENW,S1/2NW,NE,W1/2SW;

Cover Type			
A = Aspen	J = Jack Pine	O = Oak	U = Upland Brush
B = Paper Birch	K = Rock	P = Lowland Poplar	UM = Upland Mix Forest
C = Cedar	L = Lowland Brush	Q = Mixed Swamp Conifer	V = Bog or Marsh
D = Treed Bog	LM = Lowland Mix Forest	R = Red Pine	W = White Pine
E = Swamp Hardwoods	M = Maple, Beech, Birch	S = Black Spruce	X = Non Stocked
F = Spruce/Fir	MC = Mixed Conifer	T = Tamarack	Y = Sand
G = Grass	MD = Mixed Deciduous	Z = Water	
H = Hemlock	N = Marsh		

Density	
0 = Non Stocked	5 = Pole Timber Medium
1 = Seedling Sapling Poor	6 = Pole Timber Well
2 = Seedling Sapling Medium	7 = Saw Timber Poor
3 = Seedling Sapling Well	8 = Saw Timber Medium
4 = Pole Timber Poor	9 = Saw Timber Well

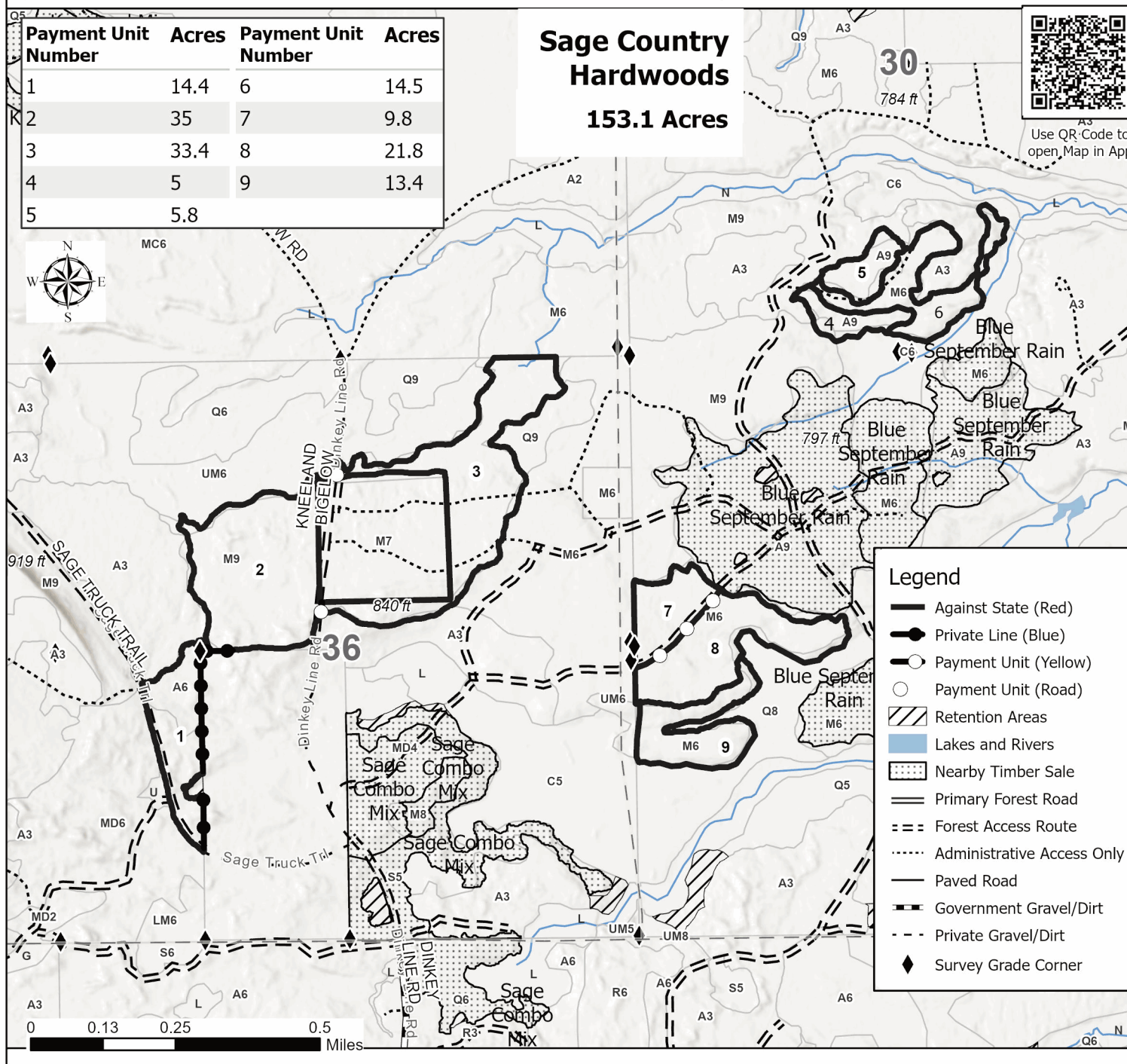
Payment Unit Number	Acres	Payment Unit Number	Acres
1	14.4	6	14.5
2	35	7	9.8
3	33.4	8	21.8
4	5	9	13.4
5	5.8		

## Sage Country Hardwoods

### 153.1 Acres



Use QR Code to open Map in App



Legend	
	Against State (Red)
	Private Line (Blue)
	Payment Unit (Yellow)
	Payment Unit (Road)
	Retention Areas
	Lakes and Rivers
	Nearby Timber Sale
	Primary Forest Road
	Forest Access Route
	Administrative Access Only
	Paved Road
	Government Gravel/Dirt
	Private Gravel/Dirt
	Survey Grade Corner

## TIMBER SALE INFORMATION

### Sage Combo Mix (42-021-25)

T44N, R08W, SEC. 1; T45N, R07W, SEC. 31; T45N, R07W, SEC. 32; T45N, R08W, SEC. 36.  
Chippewa County (Advertised Price \$37,036.80)

SALE NOTE: Roads may require the installation of culverts for cross drainage or at natural drainage-ways. See Sale Spec 4.1.5 for details.

Within Payment Unit(s) 1, 2, 4, and 5, harvesting is limited to the period of October 1 to April because of winter deer range.

Some roads or skid trails may require extra protection such as that afforded by timber mats, interlocking composite mats, or another approved system. See Sale Spec 5.2.17 for additional information.

A timber sale contract for this lump sum, sealed bid timber sale will be awarded to the responsible bidder offering the highest sealed bid price. All units of volume listed below were estimated using the Inventory Manager computer program and the new Michigan taper model. Bids must be at or above the following advertised price for each product and species:

<u>PRODUCTS &amp; SPECIES</u>	<u>ESTIMATED UNITS*</u>	<u>ADVERTISED PRICE</u>
Sawtimber		
Paper Birch	4.8 MBF	\$ 12.00 / MBF
Red Maple	1.4 MBF	\$ 32.00 / MBF
Pulpwood		
Balsam Fir	682 Cords	\$ 4.65 / Cord
Mixed Aspen	1,325 Cords	\$ 12.95 / Cord
Mixed Hardwood	775 Cords	\$ 6.10 / Cord
Mixed Spruce	967 Cords	\$ 3.00 / Cord
N. White Cedar	109 Cords	\$ 2.25 / Cord
Red Pine	183 Cords	\$ 45.10 / Cord
White Pine	43 Cords	\$ 11.10 / Cord

\* The total volume is statistically estimated within plus (+) or minus (-) 11.00 percent. There are an estimated 4,107 cords on this timber sale, plus or minus 452 cords at the 95% confidence level. The estimated units are final and not subject to adjustment. Prospective bidders are urged to examine this timber and to make their own estimates of quantity and quality.

### **BOND AND PAYMENT SCHEDULE:**

1. A bond in the amount of \$1,852.00 to insure faithful performance of the conditions of the contract will be deposited by the successful bidder within 21 days of the sale award.
2. Cutting in any sale or unit without the required advance payment would be considered a trespass.
3. Total payment must be paid in advance or according to the following schedule :
  - (a) Ten percent (10%) of the sale value must be paid within 21 days of the sale award.
  - (b) The 10% down payment will be credited towards the first unit cut.
  - (c) Payment for each of the following units must be made before cutting begins in that unit:

PAYMENT UNIT NUMBER	PERCENT OF TOTAL SALE VALUE
01	12.0%
02	13.3%
03	26.5%
04	26.3%
05	21.9%

4. If no cutting takes place, the 10% down payment will not be refunded.

5. Operations on the contract issued will terminate on 06/30/2030.

### **SALE STATISTICS**

Volumes were calculated in cubic feet using the Michigan taper model. Cubic foot volume includes all wood inside bark for the product indicated. For display purposes, cubic feet were converted to cords and MBF using a simple conversion factor, e.g. 79 cubic feet per cord and 185 cubic feet per MBF. The cubic foot volumes are precise; the cords and MBF volumes are not. Cubic foot volume cannot be directly converted to cords or boards with precision.

**SALE VOLUMES**

The total estimated sale volume may not equal the sum of the species/products due to the nature of statistical calculations associated with double sampling methodology.

VOLUME			STATISTICAL RANGE IN CORDS	
TOTAL CUBIC FEET	TOTAL CORDS	PERCENT ERROR	MINIMUM	MAXIMUM
324,428	4,107	11.00%	3,655	4,559

**VDU VOLUMES**

A VDU is a Volume Determination Unit. Volumes and their associated statistics are calculated at the VDU level and summarized to the sale level. There is often a one to one relationship between a VDU and a Payment Unit, but not always, depending on the cruise design. Refer to the VDU TO PAYMENT UNIT table.

	VOLUME			RANGE IN CORDS	
VDU	TOTAL CUBIC FEET	TOTAL CORDS	PERCENT ERROR	MINIMUM	MAXIMUM
13	39,394	499	41.87%	290	707
61	84,700	1,072	20.22%	855	1,289
67	75,613	957	20.51%	761	1,153
113	34,430	436	31.67%	298	574
115	15,172	192	41.31%	113	271
117	75,119	951	25.19%	711	1,190
<b>TOTAL:</b>	<b>324,428</b>	<b>4,107</b>		<b>3,028</b>	<b>5,185</b>

**VDU TO PAYMENT UNIT**

When a VDU is associated with more than one Payment Unit (PU), the VDU volumes are assigned to the PU based on acres of the VDU within the PU.

VDU	VDU ACRES	PU	PU ACRES
<b>TOTAL:</b>			

**DESCRIPTION OF TIMBER BY PAYMENT UNIT (PU)**

PU	MARKET GROUP	PRODUCT	QUANTITY	UNIT	ACRES	ADVERTISE PRICE
1	Balsam Fir	Pulpwood	135	Cords	24.1	\$4,432.80
	Mixed Aspen		140	Cords		
	<i>Quaking Aspen</i>		140	<i>Cords</i>		
	Mixed Hardwood		154	Cords		
	<i>Black Cherry</i>		37	<i>Cords</i>		
	<i>Paper Birch</i>		14	<i>Cords</i>		
	<i>Red Maple</i>		81	<i>Cords</i>		
	<i>Sugar Maple</i>		19	<i>Cords</i>		
	<i>Yellow Birch</i>		3	<i>Cords</i>		
	Mixed Spruce		235	Cords		
	<i>Black Spruce</i>		87	<i>Cords</i>		
	<i>White Spruce</i>		148	<i>Cords</i>		
	N. White Cedar		25	Cords		
	Red Pine		4	Cords		
	White Pine		10	Cords		
2	Red Maple	Sawtimber	1.4	MBF	24.6	\$4,916.65
	Balsam Fir	Pulpwood	145	Cords		
	Mixed Aspen		129	Cords		
	<i>Quaking Aspen</i>		129	<i>Cords</i>		
	Mixed Hardwood		229	Cords		
	<i>Black Cherry</i>		26	<i>Cords</i>		
	<i>Paper Birch</i>		15	<i>Cords</i>		
	<i>Red Maple</i>		166	<i>Cords</i>		
	<i>Sugar Maple</i>		19	<i>Cords</i>		
	<i>Yellow Birch</i>		3	<i>Cords</i>		
	Mixed Spruce		279	Cords		
	<i>Black Spruce</i>		111	<i>Cords</i>		
	<i>White Spruce</i>		168	<i>Cords</i>		
	N. White Cedar		31	Cords		
	Red Pine		2	Cords		
White Pine	12		Cords			
3	Balsam Fir	Pulpwood	65	Cords	14.6	\$9,850.05
	Mixed Aspen		52	Cords		
	<i>Quaking Aspen</i>		52	<i>Cords</i>		
	Mixed Hardwood		28	Cords		
	<i>Black Cherry</i>		1	<i>Cords</i>		
	<i>Paper Birch</i>		1	<i>Cords</i>		
	<i>Red Maple</i>		23	<i>Cords</i>		
	<i>Yellow Birch</i>		3	<i>Cords</i>		
	Mixed Spruce		154	Cords		
	<i>Black Spruce</i>		82	<i>Cords</i>		
	<i>White Spruce</i>		72	<i>Cords</i>		
	N. White Cedar		46	Cords		
	Red Pine		177	Cords		
	White Pine		14	Cords		
	4		Balsam Fir	Pulpwood		
Mixed Aspen		547	Cords			
<i>Quaking Aspen</i>		547	<i>Cords</i>			
Mixed Hardwood		256	Cords			
<i>Black Cherry</i>		5	<i>Cords</i>			
<i>Paper Birch</i>		31	<i>Cords</i>			
<i>Red Maple</i>		220	<i>Cords</i>			
Mixed Spruce		123	Cords			
<i>Black Spruce</i>		123	<i>Cords</i>			
White Pine		7	Cords			
5	Paper Birch	Sawtimber	4.8	MBF	22.7	\$8,099.00

**DESCRIPTION OF TIMBER BY PAYMENT UNIT (PU), CON'T**

PU	MARKET GROUP	PRODUCT	QUANTITY	UNIT	ACRES	ADVERTISE PRICE
5 con't	Balsam Fir	Pulpwood	198	Cords		
	Mixed Aspen		457	Cords		
	<i>Balsam Poplar</i>		35	<i>Cords</i>		
	<i>Quaking Aspen</i>		422	<i>Cords</i>		
	Mixed Hardwood		108	Cords		
	<i>Black Ash</i>		6	<i>Cords</i>		
	<i>Black Cherry</i>		3	<i>Cords</i>		
	<i>Paper Birch</i>		44	<i>Cords</i>		
	<i>Red Maple</i>		55	<i>Cords</i>		
	Mixed Spruce		176	Cords		
	<i>Black Spruce</i>		176	<i>Cords</i>		
	N. White Cedar		7	Cords		
	TOTAL:			6.2	MBF	
TOTAL:			4,084	Cords		

## Sale Specific Conditions & Requirements

Sale Name: Sage Combo Mix

Sale Number: 42-021-25 Seq#: 1

### 1 - Sale Area

#### 1.2 - Boundaries

##### 1.2.1 - Painted Boundaries (9/19)

The sale boundary and Payment Unit boundaries are marked and identified by blue, red and purple paint along with an unmarked road. Exterior sale boundary lines against private property are marked with blue paint. Exterior sale boundary lines against state are marked with red paint. Interior Payment Unit boundary lines between Payment Units 1 and 2 are marked with purple paint. Interior Payment Unit boundary lines between Payment Units 4 and 5 are marked with red paint. The Payment Unit boundary between Payment Units 1 and 3 is identified by a road and has no paint (unmarked). Retention patches are marked with red paint; no harvesting activities may occur within these areas. The painted boundary line trees are not Included Timber and are to be protected. Purple painted trees designating an interior Payment Unit boundary are only to be cut when all surrounding Payment Units have been paid.

### 2 - Timber Specifications

#### 2.1 - Included Timber

##### 2.1.2 - Clearcut Unit(s) w/o Unmerchantable Trees (8/11)

Within Payment Unit(s) 1-5, cut all trees which meet minimum piece specifications in 2.2 Utilization.

Within Payment Unit 1, do not cut any oak or hemlock. Leave white pine larger than 20". Leave all cherry ringed in green paint.

Within Payment Unit 2, do not cut any oak or hemlock. Leave cedar pockets where they exist (individual cedar may be harvested).

Within Payment Unit 3, harvest all deciduous trees over 2" DBH and all conifers over 4" DBH. Leave cedar pockets where they exist (individual cedar may be harvested). Do not cut any red pine ringed in green.

Within Unit 4 and 5 leave all hemlock and oak.

#### 2.2 - Utilization

##### 2.2.9 - No Chipping Permitted (12/08)

Within Payment Unit(s) 1-5, all wood must be removed by whole tree, tree segment, or roundwood. No chipping is permitted.

### 4 - Transportation

#### 4.1 - Construction

##### 4.1.4 - Timber Removed for Construction (3/23)

Trees cut or damaged in the process of pre-approved road, landing, or skid trail construction will be decked in an area separate from other Designated Timber and not removed until measured by the Sale Administrator. Payment will be made at contract prices or average prices, if not on the contract.

##### 4.1.5 - Culverts (5/14)

Roads may require the installation of culverts for cross drainage or at natural drainage-ways. If culverts are needed in these locations, their placement will be specified by the Sale Administrator, and they shall be installed prior to hauling. The culverts shall be new, corrugated metal. Culverts will be a minimum of 12 inches in diameter and 24 feet in length. If culverts are removed, fill shall be removed from wetland soils as specified. Soils shall be maintained and left in a non-erodible condition, with water bars, seed, fertilizer, mulch, and slash installed as directed by the Sale Administrator and as specified in the BMP manual. Stream crossing permits, if needed, will be obtained by the DNR.

##### 4.1.6 - Road Construction (4/24)

Construction of new roads or improvements of existing roads shall be done in such a way as to minimize the environmental

and visual impacts. Merchantable trees shall be cut and utilized unless otherwise directed. Non-merchantable trees shall be severed and laid flat on the ground. Slash shall be scattered, not left in windrows, and kept a minimum of 10 feet back from the road edge. Stumps shall be set upright, not left on edge, and be moved at least 10 feet away from the road edge. Disturbed soil shall be feathered into the woods and not left in berms or windrows.

#### 4.1.7 - Road Closure (10/11)

All new roads built into the sale must be blocked to vehicle traffic upon completion of the sale. Overgrown roads that are reopened shall be considered new roads. In general, this will require constructing a four (4') foot high berm of stumps and logs covered with earth. All stumps from road building and landing construction must be reserved to block any newly constructed roads upon completion of the sale. These stumps must be scattered along the road system to prohibit vehicular movement. Contact the Sale Administrator for specific details of design and placement.

### 4.2 - Maintenance

#### 4.2.1 - Hauling Restriction (12/08)

Hauling may be restricted on forest roads (Giddings Road) by the Unit Manager or his/her representative. The restriction may occur during spring breakup or during wet weather conditions. Hauling is also restricted on the Dinkey Line Road south of the Giddings Road by the Mackinac County Road Commission. This road segment is weight restricted year-round. The restriction may be lifted by the County during winter months when frozen. A permit will be necessary from the Mackinac County Road Commission.

#### 4.2.2 - Fill Material (4/07)

To maintain roads, fill material may be needed in areas where "holes" exist or may be expected to develop. This fill material should be placed before trucking begins. Contact the Sale Administrator regarding the availability of onsite sand or gravel from adjacent State-owned lands.

#### 4.2.4 - Grading (10/16)

For completion of the sale, state forest roads must be graded. In general, this will require a road grader or bulldozer to shape up the roads after forest products have been hauled off site. This includes cleaning of drainage areas, grading, crowning and filling with gravel, if necessary. The grading equipment to be used must be approved by the Unit Manager or his/her representative.

#### 4.2.5 - Two Wheel Drive Condition (2/04)

All existing trail roads on and adjacent to the Sale Area must be passable by two-wheel drive traffic for the duration of the sale.

## 5 - Operations

### 5.2 - Conduct of Operations

#### 5.2.2 - Hazard Trees/Snags

##### 5.2.2.1 - Den Trees (10/16)

Obvious hollow and/or den trees shall be protected and left standing unless they are a safety hazard.

#### 5.2.3 - Operating Restrictions

##### 5.2.3.1 - Operating Restrictions (9/11)

Within Payment Unit(s) 1, 2, 4, and 5, unless changed by written agreement, cutting and skidding is limited to the period of October 1 to April 1. This restriction is because of winter deer range.

#### 5.2.4 - Dead and Down Creation

##### 5.2.4.4 - Dead and Down Creation, Grouse (6/18)

To encourage grouse and other wildlife, in Payment Unit(s) 4 and 5, leave one, 9–15-inch DBH unmerchantable woody material 8-10 feet long or greater, flat on the ground next to a tall stump at least 3 feet high to serve as a future grouse drumming log. If no unmerchantable products of this size are available, use a log of the same dimensions next to a stump at least 3 feet tall. Placement should be nearby mature aspen. Leave at least 1 of these drumming logs per 5 acres and attempt to locate in portions of the stand with ample aspen prior to harvest.

#### 5.2.17 - Timber Mats and Interlocking Composite Mats (5/23)

Some roads or skid trails may require extra protection such as that afforded by timber mats, interlocking composite mats, or another approved system. If available, mats may be borrowed from the DNR. A Timber Sale Contract Amendment will be used to document the Purchaser's use of the DNR's mats. Contact the Sale Administrator regarding availability and pick-up. Timber mats are available from various field offices. Composite mats are only available from the Grayling field office and the Marquette ICC. The Purchaser is responsible for picking up and hauling the mats to and from the site. The composite mats will require DNR staff onsite for installation and removal. Contact the Sale Administrator to schedule at least 30 days before desired install/removal date. All mats must be cleaned prior to drop off. This may include, but is not limited to, power washing and brushing to remove mud and debris. A charge of \$700.00 per timber mat and \$2,000.00 per composite mat will be assessed for all damaged or non-returned mats. Damage for the crane/timber mats is defined as three or more broken cants. Damage for the composite mats is defined as cracked or broken mats.

#### 5.2.32 - Decking/Landing Restoration (9/13)

All decking and landing areas must have the surface area restored to a condition equal to or better than before. This is to ensure the proper regeneration of the stand. Wood debris, chips and "cookies" from trimmings must be removed or scattered away from landing and loading areas and may not be windrowed on the edge.

#### 5.2.38 - No Decking Against Live Trees (2/04)

Cut products may not be decked against unmarked or designated leave trees.

#### 5.2.39 - ORV Trail/Route Protection (4/18)

The ORV trail runs along the Giddings Road. Do not damage posts with ORV markers.

### 5.3 - Stream Protection

#### 5.3.1 - Operating Near Stream (1/25)

No tracked or wheeled vehicles shall be operated within 50 feet of any intermittent creek, except at an approved crossing.

#### 5.3.2 - Parking Equipment Near Water (10/23)

Within Payment Unit(s) 2 and 3 the parking of or storage of equipment is prohibited within 100 feet of water bodies or ground water supplies. All equipment, when not in use for harvest operations, must be parked a minimum of 100 feet away from water sources (streams, rivers, lakes, ponds, vernal pools, ground water sources) and 50 feet away from slopes leading to water sources and/or riparian areas. This restriction is for preventing unforeseen oil and/or fluid leaks from contaminating water bodies and/or ground water supplies.

### 5.4 - Soil Protection

#### 5.4.1 - Rutting Restriction, General (7/16)

Operations are to cease immediately if equipment and weather conditions result in rutting of roads and/or skid trails which are 12 inches or greater in depth and 50 feet in length. The Unit Manager or his/her representative may restrict hauling and/or skidding if ruts exceed the specified depth. With the Unit Manager or his/her representative's approval, the Purchaser may return to the area when the risk of rutting has decreased.

#### 5.4.6 - Wet Area Protection (5/10)

No harvesting operations, including skidding and felling, are to take place within the vernal pond areas or drainages. When harvesting occurs, there should be no disturbance to the vernal pond depression. All equipment, trees and tops should be kept out of this area. Within 100 feet of the pond, equipment should only be used when the soil is in a dry or frozen condition. Care must be taken by the Purchaser to identify and avoid operating in these areas of the timber sale.

#### 5.4.7 - Rutting Restriction, Riparian Management Zone (RMZ) (1/25)

Within the Riparian Management Zone (RMZ), operations are to cease immediately if equipment and weather conditions result in rutting of roads and skid trails which are six (6) inches or greater in depth and 25 feet in length. The Unit Manager or his/her representative may restrict hauling and/or skidding if ruts exceed the specified depth. With the Unit Manager or his/her representative's approval, the Purchaser may return to the area when the risk of rutting has decreased.

### 5.8 - Protection of Endangered Species

#### 5.8.5 - Protection of Raptor Nests (3/13)

All trees with raptor nests will be protected if found during harvesting operations. Notification will be made to the Unit Manager or his/her representative who will notify the Wildlife Biologist so an onsite evaluation and recommendation can be made, if necessary.

## **6 - Safety and Fire Prevention**

### **6.2 - Signing**

#### **6.2.1 - Road Posting (10/20)**

The Purchaser is responsible for posting and maintaining caution signs on Dinkey Line and/or Giddings Road prior to beginning operations. The road must be posted at appropriate distances from the Sale Area to warn of logging activity and truck traffic. Signs must be removed when harvest operations are suspended or completed. The Purchaser will provide these signs.



**TIMBER SALE MAP**

This information provided by authority of Part 525, 1994 PA 451, as amended.

Sale Number  
**42-021-25**

Date  
**09/22/2025**

Forest Management Unit  
Newberry Mgt Unit

County  
Chippewa

Mapped By: Payment  
Cruised By: DNR Staff

Scale  
**1:15,840**

Page  
**1**

Of  
**1**

Township 44N / 45N Range 07W / 08W Section(s) and Subdivision(s) Sec. 1 N1/2NE; Sec. 31 SENE,E1/2SE; Sec. 32 SWNW,W1/2SW; Sec. 36 SE;

**Cover Type**

A = Aspen	J = Jack Pine	O = Oak	U = Upland Brush
B = Paper Birch	K = Rock	P = Lowland Poplar	UM = Upland Mix Forest
C = Cedar	L = Lowland Brush	Q = Mixed Swamp Conifer	V = Bog or Marsh
D = Treed Bog	LM = Lowland Mix Forest	R = Red Pine	W = White Pine
E = Swamp Hardwoods	M = Maple, Beech, Birch	S = Black Spruce	X = Non Stocked
F = Spruce/Fir	MC = Mixed Conifer	T = Tamarack	Y = Sand
G = Grass	MD = Mixed Deciduous	Z = Water	
H = Hemlock	N = Marsh		

**Density**

0 = Non Stocked	5 = Pole Timber Medium
1 = Seedling Sapling Poor	6 = Pole Timber Well
2 = Seedling Sapling Medium	7 = Saw Timber Poor
3 = Seedling Sapling Well	8 = Saw Timber Medium
4 = Pole Timber Poor	9 = Saw Timber Well

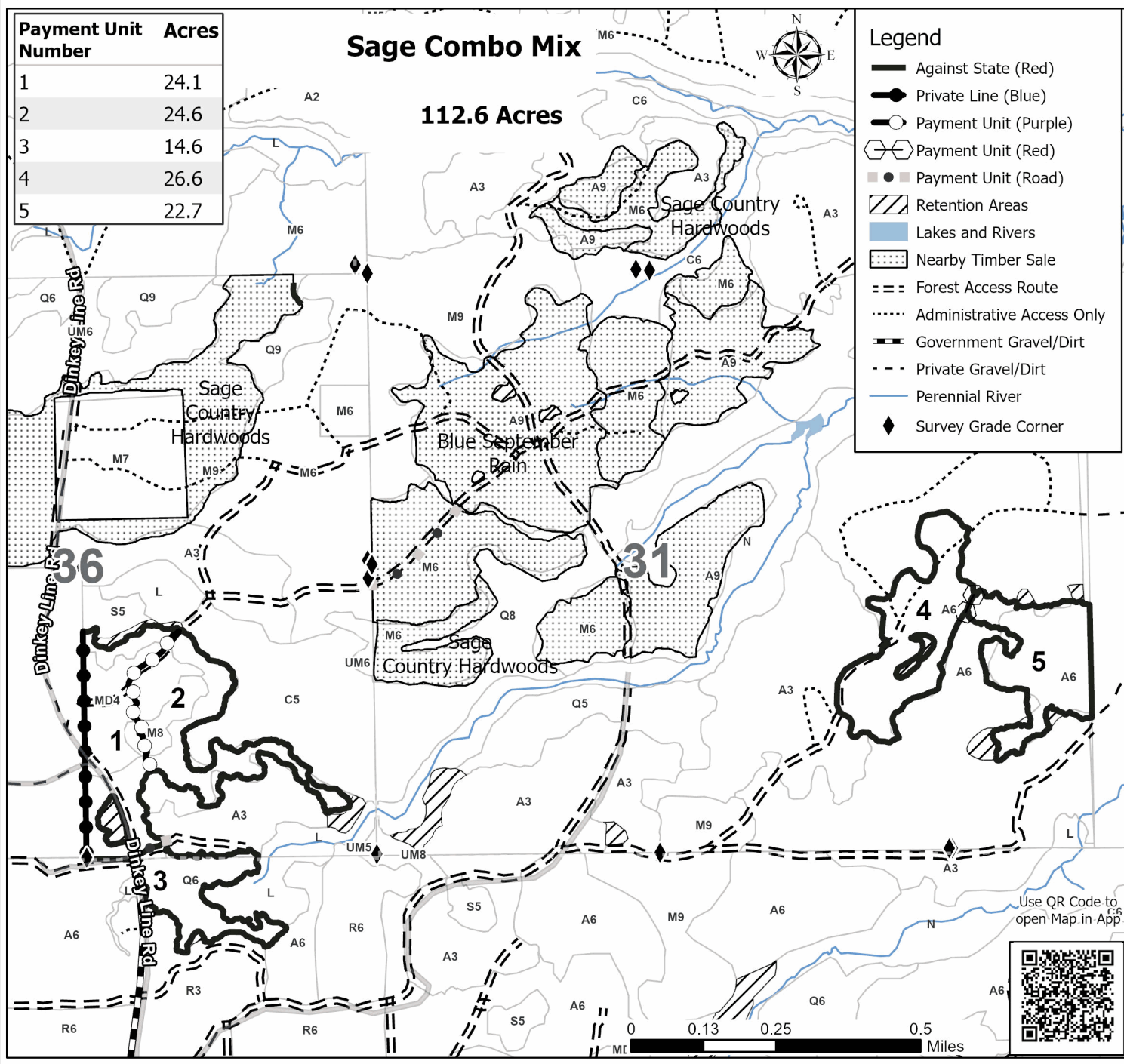
Payment Unit Number	Acres
1	24.1
2	24.6
3	14.6
4	26.6
5	22.7

**Sage Combo Mix**

**112.6 Acres**

**Legend**

- Against State (Red)
- Private Line (Blue)
- Payment Unit (Purple)
- Payment Unit (Red)
- Payment Unit (Road)
- Retention Areas
- Lakes and Rivers
- Nearby Timber Sale
- Forest Access Route
- Administrative Access Only
- Government Gravel/Dirt
- Private Gravel/Dirt
- Perennial River
- Survey Grade Corner





Sage Country Hardwoods (42-020-25)  
T45N, R07W, SEC. 30; T45N, R07W, SEC. 31; T45N, R08W, SEC. 36; Luce

In response to the notice of sale to be held 3:00 p.m. (local time) on May 7, 2026, I am hereby submitting my sealed bid ( firm offer) for the following forest products to be cut. Bids for individual species must be at or above the advertised price. All non-responsive bid forms may be rejected.

<u>PRODUCTS &amp; SPECIES</u>	<u>ESTIMATED VOLUME*</u>	<u>ADVERTISED PRICE</u>	<u>BID PRICE/UNIT</u>
<b>Sawtimber</b>			
Red Maple	78.2 MBF	\$ 35.00/MBF	\$ _____
Sugar Maple	90.7 MBF	\$ 314.00/MBF	\$ _____
<b>Pulpwood</b>			
Balsam Fir	182 Cords	\$ 4.95/Cord	\$ _____
Mixed Aspen	280 Cords	\$ 13.90/Cord	\$ _____
Mixed Hardwood	1,422 Cords	\$ 6.50/Cord	\$ _____
Mixed Spruce	44 Cords	\$ 3.20/Cord	\$ _____
N. White Cedar	18 Cords	\$ 2.40/Cord	\$ _____
White Pine	6 Cords	\$ 11.90/Cord	\$ _____

\*The volumes are statistically estimated within plus (+) or minus (-) 14.09 percent at 95% confidence level. These estimated volumes are final and not subject to adjustment. Prospective bidders are urged to examine this timber and to make their own estimates of quantity and quality.

I understand that any or all bids may be rejected. All bids must be signed and all bid items must be bid or the bid form may be rejected. I also understand that consideration and awarding a contract will be based upon my past performance and ability to complete the contract based upon equipment and staffing subject to my control .

FEDERAL ID: \_\_\_\_ - \_\_\_\_ - \_\_\_\_ or SOCIAL SECURITY NUMBER: \_\_\_\_ - \_\_\_\_ - \_\_\_\_

Company or individual bidding: \_\_\_\_\_

Company representative's name: \_\_\_\_\_

Address: \_\_\_\_\_

City: \_\_\_\_\_ State: \_\_\_\_\_ Zip: \_\_\_\_\_

IF AVAILABLE, PLEASE PLACE THE PERSONALIZED LABEL FROM YOUR PROSPECTUS IN THE ABOVE BOX.

Individual or company representative's signature: \_\_\_\_\_ Date: \_\_\_\_\_

Phone number : \_\_\_\_\_ Email (optional): \_\_\_\_\_

**THE WINNING BIDDER MUST COMPLETE THE VERIFICATION OF WORKER'S DISABILITY COMPENSATION ACT COMPLIANCE (ON REVERSE SIDE IF DOUBLE SIDED) WITHIN 21 DAYS OF SALE AWARD DATE**



# TIMBER SALE VERIFICATION OF WORKER'S DISABILITY COMPENSATION ACT COMPLIANCE

As required by Act 317, P.A. 1969 (Worker's Compensation) and  
Part 5 of Act 451 of 1994, as amended.

FOR DEPARTMENT USE ONLY	
Sale Number (XX - XXX - XX - XX)	
Forest Management Unit:	

## VERIFICATION OF WORKER'S DISABILITY COMPENSATION ACT COMPLIANCE

- This verification must be completed and submitted within 21 days of contract award and prior to the issuance of the timber sale contract.
- In addition, if boxes 2B or 2C are checked, then Notice of Exclusion or Certificate of Insurance must be submitted within twenty-one (21) days of the contract award and prior to the issuance of the timber sale contract.
- All information must be typed or printed except for written signatures.

Please Check Appropriate Categories:

1. My business is organized as (you **must** check one of the boxes below):
  - A.  Sole Proprietorship (individual)
  - B.  Partnership
  - C.  Corporation
2. You **must** check one of the boxes below:
  - A.  I certify my business is a sole proprietorship and it has no employees but the sole proprietor. I am not subject to the Worker's Compensation Laws.
  - B.  I certify my business has satisfied its obligation to the Worker's Compensation Act through the use of an approved Notice of Exclusion (BWC-337, Rev. 5/96). I will provide a copy of the Notice of Exclusion within 21 days of the contract award. (For questions or a copy of the BWC-337, please call the Worker's Compensation Bureau at 517-322-1195).
  - C.  I certify my business has a Worker's Compensation Policy. I will provide an original Certificate of Insurance within twenty-one (21) days of the contract award.
3. If you have checked item 2(A) or 2(B), you **must** indicate the number of **both** full-time and part-time employees, other than yourself, including family members and active partners (if none, you must enter "0").

\_\_\_\_\_ Full-time Employees

\_\_\_\_\_ Part-time Employees

Name of Business		Federal ID (or) Social Security No.	
Address		Telephone (       )	
City	State	ZIP	

*I hereby certify that the above information is true and correct. I agree to notify the Michigan DNR of any changes that occur in factors affecting my coverage during any of my present and future operations.*

\_\_\_\_\_  
Signature of Owner or Authorized Representative

\_\_\_\_\_  
Title

\_\_\_\_\_  
Date

Please complete the "SEALED BID" information on the next page

Sage Combo Mix (42-021-25)

T44N, R08W, SEC. 1; T45N, R07W, SEC. 31; T45N, R07W, SEC. 32; T45N, R08W,

In response to the notice of sale to be held 3:00 p.m. (local time) on May 7, 2026, I am hereby submitting my sealed bid ( firm offer) for the following forest products to be cut. Bids for individual species must be at or above the advertised price. All non-responsive bid forms may be rejected.

<u>PRODUCTS &amp; SPECIES</u>	<u>ESTIMATED VOLUME*</u>	<u>ADVERTISED PRICE</u>	<u>BID PRICE/UNIT</u>
<b>Sawtimber</b>			
Paper Birch	4.8 MBF	\$ 12.00/MBF	\$ _____
Red Maple	1.4 MBF	\$ 32.00/MBF	\$ _____
<b>Pulpwood</b>			
Balsam Fir	682 Cords	\$ 4.65/Cord	\$ _____
Mixed Aspen	1,325 Cords	\$ 12.95/Cord	\$ _____
Mixed Hardwood	775 Cords	\$ 6.10/Cord	\$ _____
Mixed Spruce	967 Cords	\$ 3.00/Cord	\$ _____
N. White Cedar	109 Cords	\$ 2.25/Cord	\$ _____
Red Pine	183 Cords	\$ 45.10/Cord	\$ _____
White Pine	43 Cords	\$ 11.10/Cord	\$ _____

\*The volumes are statistically estimated within plus (+) or minus (-) 11.00 percent at 95% confidence level. These estimated volumes are final and not subject to adjustment. Prospective bidders are urged to examine this timber and to make their own estimates of quantity and quality.

I understand that any or all bids may be rejected. All bids must be signed and all bid items must be bid or the bid form may be rejected. I also understand that consideration and awarding a contract will be based upon my past performance and ability to complete the contract based upon equipment and staffing subject to my control.

FEDERAL ID: \_\_\_\_ - \_\_\_\_ - \_\_\_\_ or SOCIAL SECURITY NUMBER: \_\_\_\_ - \_\_\_\_ - \_\_\_\_

Company or individual bidding: \_\_\_\_\_

Company representative's name: \_\_\_\_\_

Address: \_\_\_\_\_

City: \_\_\_\_\_ State: \_\_\_\_\_ Zip: \_\_\_\_\_

IF AVAILABLE, PLEASE PLACE THE PERSONALIZED LABEL FROM YOUR PROSPECTUS IN THE ABOVE BOX.

Individual or company representative's signature: \_\_\_\_\_ Date: \_\_\_\_\_

Phone number : \_\_\_\_\_ Email (optional): \_\_\_\_\_

**THE WINNING BIDDER MUST COMPLETE THE VERIFICATION OF WORKER'S DISABILITY COMPENSATION ACT COMPLIANCE (ON REVERSE SIDE IF DOUBLE SIDED) WITHIN 21 DAYS OF SALE AWARD DATE**



<b>FOR DEPARTMENT USE ONLY</b>
Sale Number (XX - XXX - XX - XX)
Forest Management Unit:

## TIMBER SALE VERIFICATION OF WORKER'S DISABILITY COMPENSATION ACT COMPLIANCE

*As required by Act 317, P.A. 1969 (Worker's Compensation) and  
Part 5 of Act 451 of 1994, as amended.*

### VERIFICATION OF WORKER'S DISABILITY COMPENSATION ACT COMPLIANCE

- This verification must be completed and submitted within 21 days of contract award and prior to the issuance of the timber sale contract.
- In addition, if boxes 2B or 2C are checked, then Notice of Exclusion or Certificate of Insurance must be submitted within twenty-one (21) days of the contract award and prior to the issuance of the timber sale contract.
- All information must be typed or printed except for written signatures.

Please Check Appropriate Categories:

1. My business is organized as (you **must** check one of the boxes below):
  - A.  Sole Proprietorship (individual)
  - B.  Partnership
  - C.  Corporation
2. You **must** check one of the boxes below:
  - A.  I certify my business is a sole proprietorship and it has no employees but the sole proprietor. I am not subject to the Worker's Compensation Laws.
  - B.  I certify my business has satisfied its obligation to the Worker's Compensation Act through the use of an approved Notice of Exclusion (BWC-337, Rev. 5/96). I will provide a copy of the Notice of Exclusion within 21 days of the contract award. (For questions or a copy of the BWC-337, please call the Worker's Compensation Bureau at 517-322-1195).
  - C.  I certify my business has a Worker's Compensation Policy. I will provide an original Certificate of Insurance within twenty-one (21) days of the contract award.
3. If you have checked item 2(A) or 2(B), you **must** indicate the number of **both** full-time and part-time employees, other than yourself, including family members and active partners (if none, you must enter "0").

\_\_\_\_\_ Full-time Employees

\_\_\_\_\_ Part-time Employees

Name of Business		Federal ID (or) Social Security No.	
Address		Telephone (       )	
City	State	ZIP	

*I hereby certify that the above information is true and correct. I agree to notify the Michigan DNR of any changes that occur in factors affecting my coverage during any of my present and future operations.*

\_\_\_\_\_  
Signature of Owner or Authorized Representative

\_\_\_\_\_  
Title

\_\_\_\_\_  
Date

**Please complete the "SEALED BID" information on the next page**