



**DEPARTMENT OF NATURAL RESOURCES  
STATE OF MICHIGAN  
TIMBER SALE PROSPECTUS #7741**

SCHEDULED SALE DATE AND TIME: 4:00 p.m. (local time) on April 16, 2026.

LOCATION: TRAVERSE CITY MGMT UNIT, 2122 M 37 SOUTH, TRAVERSE CITY, MI 49685.

PROSPECTUS NOTE: The bidder is advised to inspect the sale area and review the location, estimated volumes, operating costs and contract terms of proposed sales. Please be aware that some landowners may request 60 days or more notice for access across their land.

Notice is hereby given that bids will be received by the Unit Manager, TRAVERSE CITY MANAGEMENT UNIT, for certain timber on the following described lands:

Comp 24 Hardwood and Pine (61-041-25) / T25N, R14W, SEC. 13, SWNW,NWSW.

T25N, R14W, SEC. 14, NENE,S1/2NE,NESW,SE.

Benzie County, Advertised Price \$152,878.45, 193.4 Acres, Hardwood, Sugar Maple.

Around Dair Aspen (61-050-25) / T25N, R14W, SEC. 11, S1/2SW.

T25N, R14W, SEC. 14, SESW,SWSE.

Benzie County, Advertised Price \$86,297.45, 55.5 Acres, Hardwood, Aspen.

Cherry Bomb Mix (61-051-25) / T25N, R14W, SEC. 11, N1/2SE.

Benzie County, Advertised Price \$79,056.60, 56.6 Acres, Hardwood, Aspen.

## BID INSTRUCTIONS (VER. 10/10/2022):

### 1. Scheduled Bid Location, Date, and Time (2/11)

Bids must be received by the Unit Manager, TRAVERSE CITY OFFICE, 2122 M 37 South, Traverse City, MI 49685, no later than 4:00 p.m. (local time) on April 16, 2026. For further information concerning this sale, contact Matthew Edison at 906-291-0095.

### 2. Bidder's Qualifications (10/22)

If all or part of a timber sale was prepared by a private contractor, the contractor and that contractor's company are not permitted to bid on the timber sale. A person must be 18 years of age or older to purchase timber. Permanent employees of the Department of Natural Resources or members of their immediate household may not bid. Former employees, in the permanent or seasonal class, may not bid until 3 months after the last day of active duty. Bids will not be accepted from individuals or companies appearing on the DNR/FRD No-Bid List. This list contains the names of purchasers who previously failed to execute a contract within 21-days or who have a history of poor performance.

### 3. Preparation of Sealed Bids (5/16)

Bid Forms may be completed online thru Michigan DNR Timber Sale Online Bidding (OLB) at [www.michigan.gov/timberbidding](http://www.michigan.gov/timberbidding) or by completing the hardcopy Bid Form found in the Timber Sale Prospectus. Hardcopy Bid Forms shall be manually signed in ink. Registration in OLB is considered your 'signature' for all bids submitted thru that system. Bid prices must be entered for each species and product in the Bid Price column for all material subject to bidding and all fill-in blanks must be completed. If erasures or other changes appear on the hardcopy Bid Form, each erasure or change must be initialed by the person signing the bid.

### 4. Submission of Sealed Bids (5/16)

Bid forms may be obtained from the Unit Manager or thru OLB. Bids may be submitted hardcopy or thru OLB. All hardcopy bids must be submitted on the bid form and in an envelope clearly identified as described in this section. NOTE: Only one bid form per bid envelope. Sealed bids must be submitted to the Unit office designated in the prospectus and must be submitted at or prior to the time established in the prospectus. The envelope should show on the outside (a) the sale name or number and (b) the date and time of bid opening, as shown in the prospectus. Bids received after the time specified in the sale prospectus are late bids and will be rejected.

It is possible for a bidder to submit multiple bids on a single sale. For example, a bid may be submitted hardcopy and a bid may be submitted thru OLB. Or, two bidders from the same company could both submit bids on the same sale. If this were to happen, the State would accept all bids received and award the contract accordingly. All bidding and contractual requirements would apply to all bids received.

### 5. Public Opening of Sealed Bids (7/16)

If conditions permit, the sealed bids will be publicly opened and posted at the time and place set in the prospectus.

If a bidder, present at a bid opening, has submitted bids on more than one sale, that bidder may withdraw their unopened bid envelopes or announce the withdrawal of their online bid after being declared the successful bidder on one sale.

### 6. Award of Contract (1/11)

Award of the contract will be made to the Bidder whose bid, conforming to the prospectus, is most advantageous to the State of Michigan on the basis of total value at rates bid for the estimated quantities. The State reserves the right to reject any bid or waive any minor irregularity in bids received. A written award mailed (or otherwise furnished) to the successful Bidder shall be deemed to result in a binding contract without further action by either party.

### 7. Down Payment (1/11)

The Bidder to whom award is made must make a down payment within 21 days of the sale award. The amount of the down payment will be calculated as shown in the Bond and Payment Schedule of this prospectus. Only cash may be used to meet this requirement.

### 8. Performance Security (1/11)

As guarantee of faithful performance, a cash bond, certificate of deposit, surety bond or irrevocable letter of credit (LOC) is required within 21 days of the sale award. The amount of the performance security is shown in the Bond and

Payment Schedule of this prospectus. If an LOC or surety is used, the coverage must extend for at least 6 months beyond the contract expiration.

#### 9. Worker's Compensation (10/22)

Purchaser shall obtain worker's compensation insurance to cover claims under Michigan's Worker's Disability Compensation Act of 1969 or similar employee benefit act of any other state applicable to an employee. Verification of Worker's Disability Compensation Act Compliance must be completed and submitted within 21 days of contract award and prior to the issuance of the timber sale contract. In addition, if applicable, Notice of Exclusion or Certificate of Insurance must also be submitted.

#### 10. Timber Sale Contract (10/22)

Additional conditions and requirements common to all timber sales are listed on the timber sale contract (R4031) and are available on line at [www.michigan.gov/timber](http://www.michigan.gov/timber). Contact the Unit Manager for additional information or a sample contract. Within 21 days of the date of the award letter, the bidder must sign the contract and provide the required down payment, performance security, and verification of worker's disability compensation. The down payment and performance security shall be in accordance with the provisions of the timber sale contract, in the sums stated in this prospectus. If these actions are not taken, then the Bidder, the Bidder's corporation, and the corporation's principals may not be permitted to bid on State timber sales for a period of 3 months after the first offense, 6 months after the second offense, and 1 year after the third offense. An offense will only be counted against the Bidder for 5 years. In addition, the Bidder certifies that if awarded this contract, the Bidder will complete the timber sale contract in accordance with its terms and any modifications thereof including requirements to purchase, cut, and remove the included timber by the expiration date.

Payment Unit values in the State Forest Timber Sale Contract are calculated based on the advertised value of the Payment Unit as a percentage of the total advertised value of the contract. The advertised value of each Payment Unit is given in the Description of Timber by Payment Unit table on the Timber Sale Information page. For example, if the value of Payment Unit 1 is advertised as \$1,500 and the total Timber Sale value is advertised as \$10,000, the contract price for Payment Unit 1 will be 15% of the total bid price ( $\$1,500/\$10,000 * 100$ ).

#### 11. Disclaimer of Estimates and Bidder's Warranty of Inspection (10/22)

Before submitting this bid, the Bidder is advised and cautioned to inspect the sale area, review the requirements of the sale contract, and take other steps as may be reasonably necessary to ascertain the location, estimated volumes, construction estimates, and operating costs of the proposed sale. Failure to do so will not relieve the Bidder from responsibility for completing the contract.

The Bidder warrants that this bid is submitted solely on the basis of the Bidder's examination and inspection of the quality and quantity of the timber offered for sale and the Bidder's opinion of the value thereof and the costs of recovery. No reliance should be placed on the State of Michigan's estimates of timber quality, quantity or costs of recovery. Bidder further acknowledges that the State of Michigan: (i) expressly disclaims any warranty of fitness of timber for any purpose; (ii) offers this timber as is without any warranty of quality (merchantability) or quantity and (iii) expressly disclaims any warranty as to the quantity or quality of timber sold.

#### 12. Certification and Chain-of-Custody (10/22)

Unless otherwise indicated in the contract under section 7 – Other Conditions of the Sale Specific Conditions & Requirements, the area encompassed by this timber sale is certified to the standards of the Forest Stewardship Council (FSC) - Certificate #SCS-FM/COC-00090N and the Sustainable Forestry Initiative (SFI) - Certificate #NSF-SFIS-5Y031-SF5. Forest products from this sale may be delivered to the mill as "FSC 100% and / or SFI certified" as long as the contractor hauling the forest products is chain-of-custody (COC) certified or covered under a COC certificate from the destination mill. The purchaser is responsible for maintaining COC after leaving the sale area.

#### 13. Good Neighbor Authority (GNA) Requirements (10/22)

If the name of this timber sales contains the acronym GNA, it is authorized by the Good Neighbor Authority (GNA) and covered by various agreements between the U.S. Forest Service and the State. The timber sale occurs on federal land and the following conditions apply:

GNA contracts on US Forest Service land will not be awarded to purchasers on the Federal list of excluded parties. The System for Award Management (SAM) will be checked for active excluded parties prior to award of contract. In

addition, the Bidder to whom award is made must complete an Assurance Regarding Felony Conviction or Tax Delinquent Status for Corporate Applicants (AD-3031).

14. Good Neighbor Authority (GNA) Requirements, con't (10/22)

Bidder certifies, by signing this bid form, that to the best of Bidder's knowledge that the following representations are accurate and complete.

- a. That the Bidder and its principals are not presently debarred, suspended, proposed for debarment, declared ineligible, or voluntary excluded from timber sales (covered transactions) by any Federal department or agency.
- b. That the Bidder and its principals have not within a 3-year period preceding this bid been convicted of or had a civil judgment rendered against them for commission of fraud or a criminal offense in connection with obtaining , attempting to obtain, or performing a public (Federal, State, or local) transaction or contract under a public transaction; violation of Federal or State antitrust statutes or commission of embezzlement, theft, forgery, bribery, falsification or destruction of records, making false statements, or receiving stolen property.
- c. That the Bidder and its principals are not presently indicted for or otherwise criminally or civilly charged by a governmental entity (Federal, State, or local) with commission of any of the offenses enumerated in paragraph b of this certification.
- d. That the Bidder and its principals have not within a 3-year period preceding this bid had one or more public transactions (Federal, State, or local) terminated for breach or default of a timber or forest product contract.

Bidders that cannot certify this requirement, in whole or in part, shall submit an explanation with their bid.

Scott Bowen  
Director

## TIMBER SALE INFORMATION

Comp 24 Hardwood and Pine (61-041-25)  
T25N, R14W, SEC. 13; T25N, R14W, SEC. 14.  
Benzie County (Advertised Price \$152,878.45)

A timber sale contract for this lump sum, sealed bid timber sale will be awarded to the responsible bidder offering the highest sealed bid price. All units of volume listed below were estimated using the Inventory Manager computer program and the new Michigan taper model. Bids must be at or above the following advertised price for each product and species:

<u>PRODUCTS &amp; SPECIES</u>	<u>ESTIMATED UNITS*</u>	<u>ADVERTISED PRICE</u>
<b>Sawtimber</b>		
Basswood	360.1 MBF	\$ 93.00 / MBF
Beech	32.9 MBF	\$ 162.00 / MBF
Mixed Aspen	34.3 MBF	\$ 124.00 / MBF
Red Pine	142.0 MBF	\$ 135.00 / MBF
Sugar Maple	202.5 MBF	\$ 207.00 / MBF
<b>Pulpwood</b>		
Basswood	418 Cords	\$ 10.65 / Cord
Mixed Aspen	34 Cords	\$ 24.60 / Cord
Mixed Hardwood	213 Cords	\$ 17.65 / Cord
Red Pine	468 Cords	\$ 59.65 / Cord
Sugar Maple	666 Cords	\$ 17.65 / Cord

\* The total volume is statistically estimated within plus (+) or minus (-) 11.10 percent. There are an estimated 3,611 cords on this timber sale, plus or minus 401 cords at the 95% confidence level. The estimated units are final and not subject to adjustment. Prospective bidders are urged to examine this timber and to make their own estimates of quantity and quality.

### **BOND AND PAYMENT SCHEDULE:**

1. A bond in the amount of \$7,644.00 to insure faithful performance of the conditions of the contract will be deposited by the successful bidder within 21 days of the sale award.
2. Cutting in any sale or unit without the required advance payment would be considered a trespass.
3. Total payment must be paid in advance or according to the following schedule :
  - (a) Ten percent (10%) of the sale value must be paid within 21 days of the sale award.
  - (b) The 10% down payment will be credited towards the first unit cut.
  - (c) Payment for each of the following units must be made before cutting begins in that unit:
 

PAYMENT UNIT NUMBER	PERCENT OF TOTAL SALE VALUE
01	13.8%
02	17.0%
03	29.7%
04	39.5%
4. If no cutting takes place, the 10% down payment will not be refunded.
5. Operations on the contract issued will terminate on 06/30/2029.

### **SALE STATISTICS**

Volumes were calculated in cubic feet using the Michigan taper model. Cubic foot volume includes all wood inside bark for the product indicated. For display purposes, cubic feet were converted to cords and MBF using a simple conversion factor, e.g. 79 cubic feet per cord and 185 cubic feet per MBF. The cubic foot volumes are precise; the cords and MBF volumes are not. Cubic foot volume cannot be directly converted to cords or boards with precision.

### **SALE VOLUMES**

The total estimated sale volume may not equal the sum of the species/products due to the nature of statistical calculations associated with double sampling methodology.

VOLUME		STATISTICAL RANGE IN CORDS		
TOTAL CUBIC FEET	TOTAL CORDS	PERCENT ERROR	MINIMUM	MAXIMUM
285,256	3,611	11.10%	3,210	4,012

**VDU VOLUMES**

A VDU is a Volume Determination Unit. Volumes and their associated statistics are calculated at the VDU level and summarized to the sale level. There is often a one to one relationship between a VDU and a Payment Unit, but not always, depending on the cruise design. Refer to the VDU TO PAYMENT UNIT table.

VDU	VOLUME		PERCENT ERROR	RANGE IN CORDS	
	TOTAL CUBIC FEET	TOTAL CORDS		MINIMUM	MAXIMUM
51	63,201	800	15.96%	672	928
62	222,055	2,811	13.57%	2,429	3,192
<b>TOTAL:</b>	<b>285,256</b>	<b>3,611</b>		<b>3,102</b>	<b>4,120</b>

**VDU TO PAYMENT UNIT**

When a VDU is associated with more than one Payment Unit (PU), the VDU volumes are assigned to the PU based on acres of the VDU within the PU.

VDU	VDU ACRES	PU	PU ACRES
<b>TOTAL:</b>			

**DESCRIPTION OF TIMBER BY PAYMENT UNIT (PU)**

PU	MARKET GROUP	PRODUCT	QUANTITY	UNIT	ACRES	ADVERTISE PRICE	
1	Red Pine	Sawtimber	63.7	MBF	15.6	\$21,126.00	
	Red Pine	Pulpwood	210	Cords			
2	Red Pine	Sawtimber	78.3	MBF	19.2	\$25,960.20	
	Red Pine	Pulpwood	258	Cords			
3	Basswood	Sawtimber	154.4	MBF	68.0	\$45,338.60	
	Beech		14.1	MBF			
	Mixed Aspen		14.7	MBF			
	<i>B. T. Aspen</i>		1.4	<i>MBF</i>			
	<i>Quaking Aspen</i>		13.3	<i>MBF</i>			
	Sugar Maple		86.8	MBF			
	Basswood		Pulpwood	179			Cords
	Mixed Aspen			14			Cords
	<i>B. T. Aspen</i>			1			<i>Cords</i>
	<i>Quaking Aspen</i>			13			<i>Cords</i>
	Mixed Hardwood	91		Cords			
	<i>Red Maple</i>	<i>Sawtimber</i>		5.6			<i>MBF</i>
	<i>Beech</i>	<i>Pulpwood</i>	74	<i>Cords</i>			
	<i>Red Maple</i>		6	<i>Cords</i>			
	Sugar Maple		286	Cords			
	4	Basswood	Sawtimber	205.7			MBF
Beech		18.8		MBF			
Mixed Aspen		19.6		MBF			
<i>B. T. Aspen</i>		1.8		<i>MBF</i>			
<i>Quaking Aspen</i>		17.8		<i>MBF</i>			
Sugar Maple		115.7		MBF			
Basswood		Pulpwood		239	Cords		
Mixed Aspen				20	Cords		
<i>B. T. Aspen</i>				2	<i>Cords</i>		
<i>Quaking Aspen</i>				18	<i>Cords</i>		
Mixed Hardwood		122	Cords				
<i>Red Maple</i>		<i>Sawtimber</i>	7.5	<i>MBF</i>			
<i>Beech</i>		<i>Pulpwood</i>	98	<i>Cords</i>			
<i>Red Maple</i>			9	<i>Cords</i>			
Sugar Maple		380	Cords				
TOTAL:			771.8	MBF			
TOTAL:			1,799	Cords			

# Sale Specific Conditions & Requirements

**Sale Name: Comp 24 Hardwood and Pine**

**Sale Number: 61-041-25 Seq#: 1**

## 1 - Sale Area

### 1.2 - Boundaries

#### 1.2.1 - Painted Boundaries (9/19)

The sale boundary and Payment Unit boundaries are marked and identified by blue, red and yellow paint. Exterior sale boundary lines against private property are marked with blue paint. Exterior sale boundary lines against state are marked with red paint. Interior Payment Unit boundaries are marked with yellow paint. Also, Haze road is the payment unit boundary between units 3 and 4. The painted boundary line trees are not Included Timber and are to be protected unless marked with orange paint.

## 2 - Timber Specifications

### 2.1 - Included Timber

#### 2.1.3 - Cut Tree Marked Unit(s) (12/08)

Within Payment Unit(s) 1-4, all trees are designated for cutting when marked with orange paint above and below stump height, regardless of merchantability. Also, all beech are designated for cutting regardless of merchantability unless marked with green paint above and below stump height. In addition, any sub-merchantable ironwood and beech may be cut as needed to facilitate logging operations. (Avoid damage or cutting of sub-merchantable maple or ash in units 3 and 4)

### 2.2 - Utilization

#### 2.2.3 - Stump Heights (12/24)

Stump heights within the Sale Area shall not exceed 12 inches for trees greater than 10 inches at DBH and four (4) inches for trees smaller than 10 inches at DBH.

#### 2.2.6 - Roundwood Operation Required (3/21)

The skidding of whole trees or tree segments with limbs attached is prohibited, within all Payment Units. All products must be produced as roundwood and forwarded to existing roads or landing areas in final product length.

#### 2.2.9 - No Chipping Permitted (12/08)

Within Payment Unit(s) 1-4, all wood must be removed by whole tree, tree segment, or roundwood. No chipping is permitted. Tops may not be chipped.

## 4 - Transportation

### 4.1 - Construction

#### 4.1.3 - Slash and Earthen Piles (8/04)

Piles or windrows of earth along roads and landings that have been widened or constructed shall be leveled. Slash from road maintenance or construction, including stumps, shall be dispersed throughout the sale as determined by the DNR sale administrator.

#### 4.1.12 - No New Roads (1/12)

No new roads will be permitted in any Payment Unit. All operations are limited to existing roads. Only Skid trails will be allowed.

## 5 - Operations

### 5.2 - Conduct of Operations

#### 5.2.1 - Slash

##### 5.2.1.8 - Slash Height (12/08)

No slash or tree tops may exceed 24 inches in height.

#### 5.2.3 - Operating Restrictions

#### 5.2.3.3 - Bark Slippage Restriction (3/09)

Within Payment Unit(s) 1-4, unless changed by written agreement, cutting and skidding are not permitted during the period of April 15 to July 15. This restriction is because of bark slippage.

#### 5.2.3.5 - Oak Wilt Restriction (1/18)

3 and 4, unless changed by written agreement, cutting, skidding, hauling within the sale and brushing of access roads to the sale are not permitted during the period of April 15 to July 15. Operations may be allowed if specific steps are taken to prevent damaging uncut oak during the high-risk period. Those steps may include completing all road brushing before April 15 and clearing a tree-length buffer along uncut oak cover before April 15. This is necessary to reduce the spread of oak wilt. For more information, contact the Unit Manager or his/her representative.

#### 5.2.3.6 - Bark Beetle Restriction (1/25)

In the event drought creates a high risk of pine bark beetle infestation, pine is not to be cut during the period March 1 through July 1, unless all portions of trees greater than two (2) inches in diameter are removed from the Sale Area, reduced to chips, or treated to the satisfaction of the Unit Manager or his/her representative, within 15 days of being severed from the stump. Pine log decks, pulpwood piles and treetops that are piled for chipping in the fall or winter within a 1/4 mile of susceptible sites must be removed before March 15. Residual slash must not be placed in piles or rows and must be spread over the site for quick drying. The Department of Natural Resources will exercise this specification if the risk of damage warrants.

#### 5.2.38 - No Decking Against Live Trees (2/04)

Cut products may not be decked against unmarked or designated leave trees.

### 5.4 - Soil Protection

#### 5.4.2 - Skid Trails (2/04)

Skid trails up and down slopes should be avoided. If, however, this is unavoidable, these trails will be left in a non-erodible condition using water bars, logs, and slash. Placing of slash on these skid trails while logging is ongoing may alleviate need for any further action. At the direction of the Sale Administrator, seed, fertilizer, and mulch may also be required.

#### 5.4.3 - Erosion Control (12/08)

Skid trails or haul roads may require erosion control structures or berms per direction of the Unit Manager or his/her representative.

#### 5.4.4 - Slope Protection (9/19)

Skid trails and roads on slopes shall be water barred with slash and stumps as soon as use is complete to prevent erosion.



## TIMBER SALE INFORMATION

Around Dair Aspen (61-050-25)  
T25N, R14W, SEC. 11; T25N, R14W, SEC. 14.  
Benzie County (Advertised Price \$86,297.45)

A timber sale contract for this lump sum, sealed bid timber sale will be awarded to the responsible bidder offering the highest sealed bid price. All units of volume listed below were estimated using the Inventory Manager computer program and the new Michigan taper model. Bids must be at or above the following advertised price for each product and species:

<u>PRODUCTS &amp; SPECIES</u>	<u>ESTIMATED UNITS*</u>	<u>ADVERTISED PRICE</u>
Sawtimber		
B. T. Aspen	264.5 MBF	\$ 124.00 / MBF
Black Cherry	67.8 MBF	\$ 143.00 / MBF
Red Maple	160.1 MBF	\$ 101.00 / MBF
Sugar Maple	9.8 MBF	\$ 207.00 / MBF
Pulpwood		
B. T. Aspen	525 Cords	\$ 24.60 / Cord
Mixed Hardwood	136 Cords	\$ 17.65 / Cord
Red Maple	583 Cords	\$ 17.65 / Cord

\* The total volume is statistically estimated within plus (+) or minus (-) 15.43 percent. There are an estimated 2,420 cords on this timber sale, plus or minus 374 cords at the 95% confidence level. The estimated units are final and not subject to adjustment. Prospective bidders are urged to examine this timber and to make their own estimates of quantity and quality.

### **BOND AND PAYMENT SCHEDULE:**

1. A bond in the amount of \$4,315.00 to insure faithful performance of the conditions of the contract will be deposited by the successful bidder within 21 days of the sale award.
2. Cutting in any sale or unit without the required advance payment would be considered a trespass.
3. Total payment must be paid in advance or according to the following schedule :
  - (a) Ten percent (10%) of the sale value must be paid within 21 days of the sale award.
  - (b) The 10% down payment will be credited towards the first unit cut.
  - (c) Payment for each of the following units must be made before cutting begins in that unit:
 

PAYMENT UNIT NUMBER	PERCENT OF TOTAL SALE VALUE
01	38.6%
02	61.4%
4. If no cutting takes place, the 10% down payment will not be refunded.
5. Operations on the contract issued will terminate on 06/30/2029.

### **SALE STATISTICS**

Volumes were calculated in cubic feet using the Michigan taper model. Cubic foot volume includes all wood inside bark for the product indicated. For display purposes, cubic feet were converted to cords and MBF using a simple conversion factor, e.g. 79 cubic feet per cord and 185 cubic feet per MBF. The cubic foot volumes are precise; the cords and MBF volumes are not. Cubic foot volume cannot be directly converted to cords or boards with precision.

### **SALE VOLUMES**

The total estimated sale volume may not equal the sum of the species/products due to the nature of statistical calculations associated with double sampling methodology.

VOLUME		STATISTICAL RANGE IN CORDS		
TOTAL CUBIC FEET	TOTAL CORDS	PERCENT ERROR	MINIMUM	MAXIMUM
191,205	2,420	15.43%	2,047	2,794

**VDU VOLUMES**

A VDU is a Volume Determination Unit. Volumes and their associated statistics are calculated at the VDU level and summarized to the sale level. There is often a one to one relationship between a VDU and a Payment Unit, but not always, depending on the cruise design. Refer to the VDU TO PAYMENT UNIT table.

VDU	VOLUME		PERCENT ERROR	RANGE IN CORDS	
	TOTAL CUBIC FEET	TOTAL CORDS		MINIMUM	MAXIMUM
41	76,088	963	23.33%	738	1,188
66	115,116	1,457	20.79%	1,154	1,760
<b>TOTAL:</b>	<b>191,205</b>	<b>2,420</b>		<b>1,893</b>	<b>2,948</b>

**VDU TO PAYMENT UNIT**

When a VDU is associated with more than one Payment Unit (PU), the VDU volumes are assigned to the PU based on acres of the VDU within the PU.

VDU	VDU ACRES	PU	PU ACRES
<b>TOTAL:</b>			

**DESCRIPTION OF TIMBER BY PAYMENT UNIT (PU)**

PU	MARKET GROUP	PRODUCT	QUANTITY	UNIT	ACRES	ADVERTISE PRICE
1	B. T. Aspen	Sawtimber	19.1	MBF	27.5	\$33,273.10
	Black Cherry		63.9	MBF		
	Red Maple		133.7	MBF		
	B. T. Aspen	Pulpwood	36	Cords		
	Mixed Hardwood		92	Cords		
	<i>Basswood</i>	<i>Sawtimber</i>	1.4	<i>MBF</i>		
	<i>Basswood</i>	<i>Pulpwood</i>	5	<i>Cords</i>		
	<i>Black Cherry</i>		84	<i>Cords</i>		
	Red Maple		326	Cords		
2	B. T. Aspen	Sawtimber	245.4	MBF	28.0	\$53,024.35
	Black Cherry		3.9	MBF		
	Red Maple		26.4	MBF		
	Sugar Maple		9.8	MBF		
	B. T. Aspen	Pulpwood	489	Cords		
	Mixed Hardwood		44	Cords		
	<i>Beech</i>		5	<i>Cords</i>		
	<i>Black Cherry</i>		19	<i>Cords</i>		
	<i>Sugar Maple</i>		20	<i>Cords</i>		
	Red Maple		257	Cords		
	TOTAL:			502.2		
TOTAL:			1,244	Cords		

# Sale Specific Conditions & Requirements

**Sale Name: Around Dair Aspen**

**Sale Number: 61-050-25 Seq#: 1**

## 1 - Sale Area

### 1.2 - Boundaries

#### 1.2.1 - Painted Boundaries (9/19)

The sale boundary and Payment Unit boundaries are marked and identified by blue, and red paint. Exterior sale boundary lines against private property are marked with blue paint. Exterior sale boundary lines against state are marked with red paint. Also, Landis road is the sale boundary in unit 2. Retention patches are marked with red paint; no harvesting activities may occur within these areas. The painted boundary line trees are not Included Timber and are to be protected.

## 2 - Timber Specifications

### 2.1 - Included Timber

#### 2.1.7 - Leave Tree Marked Unit(s) (6/14)

Within Payment Unit(s) 1 and 2, all aspen, maple, cherry, beech, basswood and ironwood trees, regardless of merchantability, are designated for cutting except trees marked with green paint above and below stump height.

### 2.2 - Utilization

#### 2.2.3 - Stump Heights (12/24)

Stump heights within units 1 and 2 shall not exceed 12 inches for trees greater than 10 inches at DBH and four (4) inches for trees smaller than 10 inches at DBH.

#### 2.2.4 - Skidding Length (12/24)

Skidding of lengths over 17 feet is permissible as long as the Sale Administrator approves the method and machinery used. If at any point damage exceeds specification 3.4.1, all of the remaining wood must be skid in lengths less than 17 feet.

#### 2.2.9 - No Chipping Permitted (12/08)

Within Payment Unit(s) 2, all wood must be removed by tree segment, or roundwood. No chipping is permitted.

#### 2.2.11 - Chipping Restriction (9/14)

If chipping occurs on this sale, in payment unit 1, then no woody debris present on the ground at the start of the sale may be chipped. In addition, brush or chips may not be stored or stockpiled on site for more than 30 days.

## 4 - Transportation

### 4.1 - Construction

#### 4.1.2 - Stream Crossings, Specific (3/11)

In unit 1, Dair Creek may require the installation of a temporary portable bridge crossing. The portable bridge may be borrowed from the DNR. This installation will be performed in accordance with the specifications on the appropriate permits which shall be provided by the DNR.

#### 4.1.3 - Slash and Earthen Piles (8/04)

Piles or windrows of earth along roads and landings that have been widened or constructed shall be leveled. Slash from road maintenance or construction, including stumps, shall be dispersed throughout the sale as determined by the DNR sale administrator.

#### 4.1.11 - Permits (2/12)

The Purchaser will secure any necessary stream crossing permits that may be required.

#### 4.1.12 - No New Roads (1/12)

No new roads will be permitted in any Payment Unit. . All operations are limited to existing roads. Only Skid trails will be allowed.

## 5 - Operations

### 5.2 - Conduct of Operations

## 5.2.1 - Slash

### 5.2.1.8 - Slash Height (12/08)

No slash or tree tops may exceed 24 inches in height.

## 5.2.3 - Operating Restrictions

### 5.2.3.5 - Oak Wilt Restriction (1/18)

Within Payment Units 1 and 2 unless changed by written agreement, cutting, skidding, hauling within the sale and brushing of access roads to the sale are not permitted during the period of April 15 to July 15. Operations may be allowed if specific steps are taken to prevent damaging uncut oak during the high-risk period. Those steps may include completing all road brushing before April 15 and clearing a tree-length buffer along uncut oak cover before April 15. This is necessary to reduce the spread of oak wilt. For more information, contact the Unit Manager or his/her representative.

## 5.2.4 - Dead and Down Creation

### 5.2.4.4 - Dead and Down Creation, Grouse (6/18)

To encourage grouse and other wildlife, in Payment Unit(s) 1 and 2 leave one 12" or larger diameter (or largest diameter trees within stand) whole tree on the ground for every two (2) acres, preferably a hardwood species such as a maple or cherry. These trees will be evenly scattered throughout the Payment Unit, preferably at least two chains from any roads, two-tracks, or trails open to vehicles. This can be an unmerchantable piece or a full tree.

### 5.2.17 - Timber Mats and Interlocking Composite Mats (5/23)

Some roads or skid trails may require extra protection such as that afforded by timber mats, interlocking composite mats, or another approved system. If available, mats may be borrowed from the DNR. A Timber Sale Contract Amendment will be used to document the Purchaser's use of the DNR's mats. Contact the Sale Administrator regarding availability and pick-up. Timber mats are available from various field offices. Composite mats are only available from the Grayling field office and the Marquette ICC. The Purchaser is responsible for picking up and hauling the mats to and from the site. The composite mats will require DNR staff onsite for installation and removal. Contact the Sale Administrator to schedule at least 30 days before desired install/removal date. All mats must be cleaned prior to drop off. This may include, but is not limited to, power washing and brushing to remove mud and debris. A charge of \$700.00 per timber mat and \$2,000.00 per composite mat will be assessed for all damaged or non-returned mats. Damage for the crane/timber mats is defined as three or more broken cants. Damage for the composite mats is defined as cracked or broken mats.

### 5.2.31 - Landing Locations (9/13)

Recommended landing areas are marked on the Timber Sale Map with the letter "L". Landings must be confined to these designated sites unless otherwise authorized by the Unit Manager or his/her representative.

### 5.2.38 - No Decking Against Live Trees (2/04)

Cut products may not be decked against unmarked or designated leave trees.



**TIMBER SALE MAP**

This information provided by authority of Part 525, 1994 PA 451, as amended.

Sale Number  
**61-050-25**

Date  
**02/09/2026**

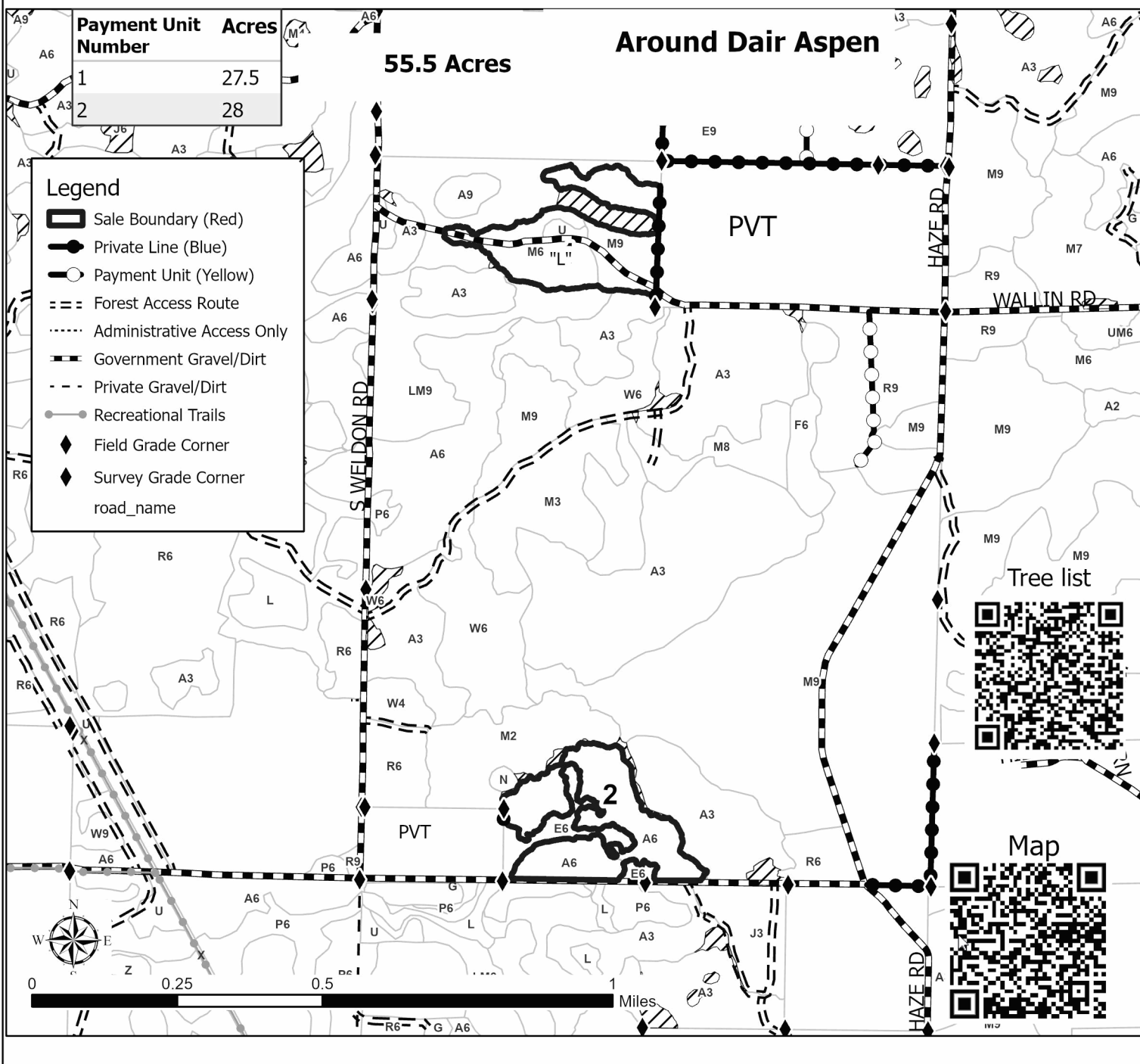
Forest Management Unit	County	Mapped By: Craig Allen
Traverse City Mgt Unit	Benzie	Cruised By: Allen, Ventimiglia, Cotant

Scale	Page	Of
1:15,840	1	1

Township	Range	Section(s) and Subdivision(s)
25N	14W	Sec. 11 S1/2SW; Sec. 14 SESW,SWSE;

Cover Type			
A = Aspen	J = Jack Pine	O = Oak	U = Upland Brush
B = Paper Birch	K = Rock	P = Lowland Poplar	UM = Upland Mix Forest
C = Cedar	L = Lowland Brush	Q = Mixed Swamp Conifer	V = Bog or Marsh
D = Treed Bog	LM = Lowland Mix Forest	R = Red Pine	W = White Pine
E = Swamp Hardwoods	M = Maple, Beech, Birch	S = Black Spruce	X = Non Stocked
F = Spruce/Fir	MC = Mixed Conifer	T = Tamarack	Y = Sand
G = Grass	MD = Mixed Deciduous	Z = Water	
H = Hemlock	N = Marsh		

Density	
0 = Non Stocked	5 = Pole Timber Medium
1 = Seedling Sapling Poor	6 = Pole Timber Well
2 = Seedling Sapling Medium	7 = Saw Timber Poor
3 = Seedling Sapling Well	8 = Saw Timber Medium
4 = Pole Timber Poor	9 = Saw Timber Well





## TIMBER SALE INFORMATION

Cherry Bomb Mix (61-051-25)  
T25N, R14W, SEC. 11.  
Benzie County (Advertised Price \$79,056.60)

A timber sale contract for this lump sum, sealed bid timber sale will be awarded to the responsible bidder offering the highest sealed bid price. All units of volume listed below were estimated using the Inventory Manager computer program and the new Michigan taper model. Bids must be at or above the following advertised price for each product and species:

<u>PRODUCTS &amp; SPECIES</u>	<u>ESTIMATED UNITS*</u>	<u>ADVERTISED PRICE</u>
Sawtimber		
B. T. Aspen	18.1 MBF	\$ 124.00 / MBF
Black Cherry	103.2 MBF	\$ 143.00 / MBF
Red Maple	386.6 MBF	\$ 101.00 / MBF
Pulpwood		
B. T. Aspen	37 Cords	\$ 24.60 / Cord
Black Cherry	305 Cords	\$ 17.65 / Cord
Red Maple	947 Cords	\$ 17.65 / Cord

\* The total volume is statistically estimated within plus (+) or minus (-) 18.31 percent. There are an estimated 2,478 cords on this timber sale, plus or minus 454 cords at the 95% confidence level. The estimated units are final and not subject to adjustment. Prospective bidders are urged to examine this timber and to make their own estimates of quantity and quality.

### **BOND AND PAYMENT SCHEDULE:**

1. A bond in the amount of \$3,953.00 to insure faithful performance of the conditions of the contract will be deposited by the successful bidder within 21 days of the sale award.
2. Cutting in any sale or unit without the required advance payment would be considered a trespass.
3. Total payment must be paid in advance or according to the following schedule :
  - (a) Ten percent (10%) of the sale value must be paid within 21 days of the sale award.
  - (b) The 10% down payment will be credited towards the first unit cut.
  - (c) Payment for each of the following units must be made before cutting begins in that unit:
 

PAYMENT UNIT NUMBER	PERCENT OF TOTAL SALE VALUE
01	54.1%
02	45.9%
4. If no cutting takes place, the 10% down payment will not be refunded.
5. Operations on the contract issued will terminate on 06/30/2028.

### **SALE STATISTICS**

Volumes were calculated in cubic feet using the Michigan taper model. Cubic foot volume includes all wood inside bark for the product indicated. For display purposes, cubic feet were converted to cords and MBF using a simple conversion factor, e.g. 79 cubic feet per cord and 185 cubic feet per MBF. The cubic foot volumes are precise; the cords and MBF volumes are not. Cubic foot volume cannot be directly converted to cords or boards with precision.

### **SALE VOLUMES**

The total estimated sale volume may not equal the sum of the species/products due to the nature of statistical calculations associated with double sampling methodology.

VOLUME		STATISTICAL RANGE IN CORDS		
TOTAL CUBIC FEET	TOTAL CORDS	PERCENT ERROR	MINIMUM	MAXIMUM
195,754	2,478	18.31%	2,024	2,932

**VDU VOLUMES**

A VDU is a Volume Determination Unit. Volumes and their associated statistics are calculated at the VDU level and summarized to the sale level. There is often a one to one relationship between a VDU and a Payment Unit, but not always, depending on the cruise design. Refer to the VDU TO PAYMENT UNIT table.

VDU	VOLUME		PERCENT ERROR	RANGE IN CORDS	
	TOTAL CUBIC FEET	TOTAL CORDS		MINIMUM	MAXIMUM
37	195,754	2,478	18.31%	2,024	2,932
<b>TOTAL:</b>	<b>195,754</b>	<b>2,478</b>		<b>2,024</b>	<b>2,932</b>

**VDU TO PAYMENT UNIT**

When a VDU is associated with more than one Payment Unit (PU), the VDU volumes are assigned to the PU based on acres of the VDU within the PU.

VDU	VDU ACRES	PU	PU ACRES
<b>TOTAL:</b>			

**DESCRIPTION OF TIMBER BY PAYMENT UNIT (PU)**

PU	MARKET GROUP	PRODUCT	QUANTITY	UNIT	ACRES	ADVERTISE PRICE
1	B. T. Aspen	Sawtimber	9.8	MBF	30.6	\$42,744.65
	Black Cherry		55.8	MBF		
	Red Maple		209.0	MBF		
	B. T. Aspen	Pulpwood	20	Cords		
	Black Cherry		165	Cords		
	Red Maple		512	Cords		
2	B. T. Aspen	Sawtimber	8.3	MBF	26.0	\$36,311.95
	Black Cherry		47.4	MBF		
	Red Maple		177.6	MBF		
	B. T. Aspen	Pulpwood	17	Cords		
	Black Cherry		140	Cords		
	Red Maple		435	Cords		
TOTAL:			507.9	MBF		
TOTAL:			1,289	Cords		

## Sale Specific Conditions & Requirements

**Sale Name: Cherry Bomb Mix**

**Sale Number: 61-051-25 Seq#: 1**

### 1 - Sale Area

#### 1.2 - Boundaries

##### 1.2.1 - Painted Boundaries (9/19)

The sale boundary and Payment Unit boundaries are marked and identified by blue, red and yellow paint. Exterior sale boundary lines against private property are marked with blue paint. Exterior sale boundary lines against state are marked with red paint. Interior Payment Unit boundaries are marked with yellow paint. Retention patches are marked with red paint; no harvesting activities may occur within these areas. The painted boundary line trees are not Included Timber and are to be protected. Yellow painted trees designating an interior Payment Unit boundary are only to be cut when all surrounding Payment Units have been paid.

### 2 - Timber Specifications

#### 2.1 - Included Timber

##### 2.1.7 - Leave Tree Marked Unit(s) (6/14)

Within Payment Unit(s) 1 and 2, all aspen, maple, cherry, beech, ironwood trees, regardless of merchantability except species and trees marked with green paint above and below stump height.

#### 2.2 - Utilization

##### 2.2.3 - Stump Heights (12/24)

Stump heights within the Sale Area shall not exceed 12 inches for trees greater than 10 inches at DBH and four (4) inches for trees smaller than 10 inches at DBH.

##### 2.2.4 - Skidding Length (12/24)

Skidding of lengths over 17 feet is permissible as long as the Sale Administrator approves the method and machinery used. If at any point damage to residual trees exceeds acceptable levels, all of the remaining wood must be skid or forwarded in lengths less than 17 feet.

### 4 - Transportation

#### 4.1 - Construction

##### 4.1.3 - Slash and Earthen Piles (8/04)

Piles or windrows of earth along roads and landings that have been widened or constructed shall be leveled. Slash from road maintenance or construction, including stumps, shall be dispersed throughout the sale as determined by the DNR sale administrator.

##### 4.1.12 - No New Roads (1/12)

No new roads will be permitted in any Payment Unit. . All operations are limited to existing roads. Only Skid trails will be allowed.

### 5 - Operations

#### 5.2 - Conduct of Operations

##### 5.2.1 - Slash

##### 5.2.1.8 - Slash Height (12/08)

No slash or tree tops may exceed 24 inches in height.

##### 5.2.4 - Dead and Down Creation

##### 5.2.4.4 - Dead and Down Creation, Grouse (6/18)

To encourage grouse and other wildlife, in Payment Unit(s) 1 and 2, leave one 12" or larger diameter (or largest diameter trees within stand) whole tree on the ground for every two (2) acres, preferably a hardwood species such as

maple or cherry. These trees will be evenly scattered throughout the Payment Unit, preferably at least two chains from any roads, two-tracks, or trails open to vehicles.

5.2.38 - No Decking Against Live Trees (2/04)

Cut products may not be decked against unmarked or designated leave trees.



TIMBER SALE MAP

This information provided by authority of Part 525, 1994 PA 451, as amended.

Sale Number  
**61-051-25**

Date  
**02/09/2026**

Forest Management Unit	County	Mapped By: Allen
Traverse City Mgt Unit	Benzie	Cruised By: Allen, Ventimiglia

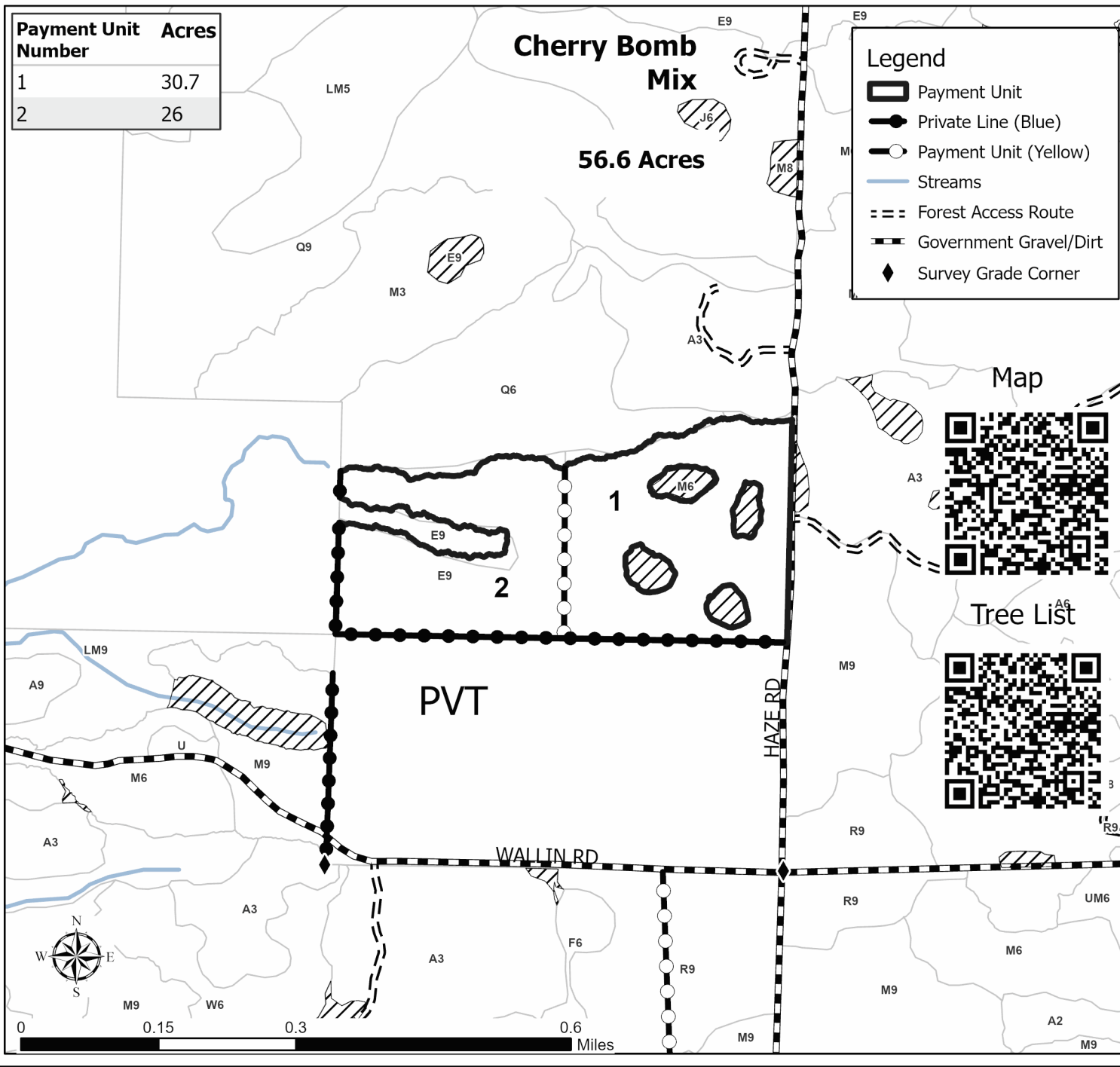
Scale	Page	Of
1:10,000	1	1

Township	Range	Section(s) and Subdivision(s)
25N	14W	Sec. 11 N1/2SE;

Cover Type			
A = Aspen	J = Jack Pine	O = Oak	U = Upland Brush
B = Paper Birch	K = Rock	P = Lowland Poplar	UM = Upland Mix Forest
C = Cedar	L = Lowland Brush	Q = Mixed Swamp Conifer	V = Bog or Marsh
D = Treed Bog	LM = Lowland Mix Forest	R = Red Pine	W = White Pine
E = Swamp Hardwoods	M = Maple, Beech, Birch	S = Black Spruce	X = Non Stocked
F = Spruce/Fir	MC = Mixed Conifer	T = Tamarack	Y = Sand
G = Grass	MD = Mixed Deciduous	Z = Water	
H = Hemlock	N = Marsh		

Density	
0 = Non Stocked	5 = Pole Timber Medium
1 = Seedling Sapling Poor	6 = Pole Timber Well
2 = Seedling Sapling Medium	7 = Saw Timber Poor
3 = Seedling Sapling Well	8 = Saw Timber Medium
4 = Pole Timber Poor	9 = Saw Timber Well

Payment Unit Number	Acres
1	30.7
2	26





Comp 24 Hardwood and Pine (61-041-25)  
T25N, R14W, SEC. 13; T25N, R14W, SEC. 14; Benzie COUNTY

In response to the notice of sale to be held 4:00 p.m. (local time) on April 16, 2026, I am hereby submitting my sealed bid (firm offer) for the following forest products to be cut. Bids for individual species must be at or above the advertised price. All non-responsive bid forms may be rejected.

<u>PRODUCTS &amp; SPECIES</u>	<u>ESTIMATED VOLUME*</u>	<u>ADVERTISED PRICE</u>	<u>BID PRICE/UNIT</u>
<b>Sawtimber</b>			
Basswood	360.1 MBF	\$ 93.00/MBF	\$ _____
Beech	32.9 MBF	\$ 162.00/MBF	\$ _____
Mixed Aspen	34.3 MBF	\$ 124.00/MBF	\$ _____
Red Pine	142.0 MBF	\$ 135.00/MBF	\$ _____
Sugar Maple	202.5 MBF	\$ 207.00/MBF	\$ _____
<b>Pulpwood</b>			
Basswood	418 Cords	\$ 10.65/Cord	\$ _____
Mixed Aspen	34 Cords	\$ 24.60/Cord	\$ _____
Mixed Hardwood	213 Cords	\$ 17.65/Cord	\$ _____
Red Pine	468 Cords	\$ 59.65/Cord	\$ _____
Sugar Maple	666 Cords	\$ 17.65/Cord	\$ _____

\*The volumes are statistically estimated within plus (+) or minus (-) 11.10 percent at 95% confidence level. These estimated volumes are final and not subject to adjustment. Prospective bidders are urged to examine this timber and to make their own estimates of quantity and quality.

I understand that any or all bids may be rejected. All bids must be signed and all bid items must be bid or the bid form may be rejected. I also understand that consideration and awarding a contract will be based upon my past performance and ability to complete the contract based upon equipment and staffing subject to my control.

FEDERAL ID: \_\_\_\_\_ or SOCIAL SECURITY NUMBER: \_\_\_\_\_

Company or individual bidding: \_\_\_\_\_

Company representative's name: \_\_\_\_\_

Address: \_\_\_\_\_

City: \_\_\_\_\_ State: \_\_\_\_\_ Zip: \_\_\_\_\_

IF AVAILABLE, PLEASE PLACE THE PERSONALIZED LABEL FROM YOUR PROSPECTUS IN THE ABOVE BOX.

Individual or company representative's signature: \_\_\_\_\_ Date: \_\_\_\_\_

Phone number : \_\_\_\_\_ Email (optional): \_\_\_\_\_

**THE WINNING BIDDER MUST COMPLETE THE VERIFICATION OF WORKER'S DISABILITY COMPENSATION ACT COMPLIANCE (ON REVERSE SIDE IF DOUBLE SIDED) WITHIN 21 DAYS OF SALE AWARD DATE**



<b>FOR DEPARTMENT USE ONLY</b>	
Sale Number (XX - XXX - XX - XX)	
Forest Management Unit:	

# TIMBER SALE VERIFICATION OF WORKER'S DISABILITY COMPENSATION ACT COMPLIANCE

As required by Act 317, P.A. 1969 (Worker's Compensation) and  
Part 5 of Act 451 of 1994, as amended.

## VERIFICATION OF WORKER'S DISABILITY COMPENSATION ACT COMPLIANCE

- This verification must be completed and submitted within 21 days of contract award and prior to the issuance of the timber sale contract.
- In addition, if boxes 2B or 2C are checked, then Notice of Exclusion or Certificate of Insurance must be submitted within twenty-one (21) days of the contract award and prior to the issuance of the timber sale contract.
- All information must be typed or printed except for written signatures.

Please Check Appropriate Categories:

1. My business is organized as (you **must** check one of the boxes below):
  - A.  Sole Proprietorship (individual)
  - B.  Partnership
  - C.  Corporation
2. You **must** check one of the boxes below:
  - A.  I certify my business is a sole proprietorship and it has no employees but the sole proprietor. I am not subject to the Worker's Compensation Laws.
  - B.  I certify my business has satisfied its obligation to the Worker's Compensation Act through the use of an approved Notice of Exclusion (BWC-337, Rev. 5/96). I will provide a copy of the Notice of Exclusion within 21 days of the contract award. (For questions or a copy of the BWC-337, please call the Worker's Compensation Bureau at 517-322-1195).
  - C.  I certify my business has a Worker's Compensation Policy. I will provide an original Certificate of Insurance within twenty-one (21) days of the contract award.
3. If you have checked item 2(A) or 2(B), you **must** indicate the number of **both** full-time and part-time employees, other than yourself, including family members and active partners (if none, you must enter "0").

\_\_\_\_\_ Full-time Employees

\_\_\_\_\_ Part-time Employees

Name of Business		Federal ID (or) Social Security No.	
Address		Telephone (       )	
City	State	ZIP	

*I hereby certify that the above information is true and correct. I agree to notify the Michigan DNR of any changes that occur in factors affecting my coverage during any of my present and future operations.*

\_\_\_\_\_  
Signature of Owner or Authorized Representative

\_\_\_\_\_  
Title

\_\_\_\_\_  
Date

Please complete the "SEALED BID" information on the next page

Around Dair Aspen (61-050-25)  
T25N, R14W, SEC. 11; T25N, R14W, SEC. 14; Benzie COUNTY

In response to the notice of sale to be held 4:00 p.m. (local time) on April 16, 2026, I am hereby submitting my sealed bid (firm offer) for the following forest products to be cut. Bids for individual species must be at or above the advertised price. All non-responsive bid forms may be rejected.

<u>PRODUCTS &amp; SPECIES</u>	<u>ESTIMATED VOLUME*</u>	<u>ADVERTISED PRICE</u>	<u>BID PRICE/UNIT</u>
<b>Sawtimber</b>			
B. T. Aspen	264.5 MBF	\$ 124.00/MBF	\$ _____
Black Cherry	67.8 MBF	\$ 143.00/MBF	\$ _____
Red Maple	160.1 MBF	\$ 101.00/MBF	\$ _____
Sugar Maple	9.8 MBF	\$ 207.00/MBF	\$ _____
<b>Pulpwood</b>			
B. T. Aspen	525 Cords	\$ 24.60/Cord	\$ _____
Mixed Hardwood	136 Cords	\$ 17.65/Cord	\$ _____
Red Maple	583 Cords	\$ 17.65/Cord	\$ _____

\*The volumes are statistically estimated within plus (+) or minus (-) 15.43 percent at 95% confidence level. These estimated volumes are final and not subject to adjustment. Prospective bidders are urged to examine this timber and to make their own estimates of quantity and quality.

I understand that any or all bids may be rejected. All bids must be signed and all bid items must be bid or the bid form may be rejected. I also understand that consideration and awarding a contract will be based upon my past performance and ability to complete the contract based upon equipment and staffing subject to my control.

FEDERAL ID: \_\_\_\_\_ or SOCIAL SECURITY NUMBER: \_\_\_\_\_  
 Company or individual bidding: \_\_\_\_\_  
 Company representative's name: \_\_\_\_\_  
 Address: \_\_\_\_\_  
 City: \_\_\_\_\_ State: \_\_\_\_\_ Zip: \_\_\_\_\_

IF AVAILABLE, PLEASE PLACE THE PERSONALIZED LABEL FROM YOUR PROSPECTUS IN THE ABOVE BOX.

Individual or company representative's signature: \_\_\_\_\_ Date: \_\_\_\_\_  
Phone number : \_\_\_\_\_ Email (optional): \_\_\_\_\_

**THE WINNING BIDDER MUST COMPLETE THE VERIFICATION OF WORKER'S DISABILITY COMPENSATION ACT COMPLIANCE (ON REVERSE SIDE IF DOUBLE SIDED) WITHIN 21 DAYS OF SALE AWARD DATE**



FOR DEPARTMENT USE ONLY	
Sale Number (XX - XXX - XX - XX)	
Forest Management Unit:	

## TIMBER SALE VERIFICATION OF WORKER'S DISABILITY COMPENSATION ACT COMPLIANCE

As required by Act 317, P.A. 1969 (Worker's Compensation) and  
Part 5 of Act 451 of 1994, as amended.

### VERIFICATION OF WORKER'S DISABILITY COMPENSATION ACT COMPLIANCE

- This verification must be completed and submitted within 21 days of contract award and prior to the issuance of the timber sale contract.
- In addition, if boxes 2B or 2C are checked, then Notice of Exclusion or Certificate of Insurance must be submitted within twenty-one (21) days of the contract award and prior to the issuance of the timber sale contract.
- All information must be typed or printed except for written signatures.

Please Check Appropriate Categories:

1. My business is organized as (you **must** check one of the boxes below):
  - A.  Sole Proprietorship (individual)
  - B.  Partnership
  - C.  Corporation
2. You **must** check one of the boxes below:
  - A.  I certify my business is a sole proprietorship and it has no employees but the sole proprietor. I am not subject to the Worker's Compensation Laws.
  - B.  I certify my business has satisfied its obligation to the Worker's Compensation Act through the use of an approved Notice of Exclusion (BWC-337, Rev. 5/96). I will provide a copy of the Notice of Exclusion within 21 days of the contract award. (For questions or a copy of the BWC-337, please call the Worker's Compensation Bureau at 517-322-1195).
  - C.  I certify my business has a Worker's Compensation Policy. I will provide an original Certificate of Insurance within twenty-one (21) days of the contract award.
3. If you have checked item 2(A) or 2(B), you **must** indicate the number of **both** full-time and part-time employees, other than yourself, including family members and active partners (if none, you must enter "0").

\_\_\_\_\_ Full-time Employees

\_\_\_\_\_ Part-time Employees

Name of Business		Federal ID (or) Social Security No.	
Address		Telephone (       )	
City	State	ZIP	

*I hereby certify that the above information is true and correct. I agree to notify the Michigan DNR of any changes that occur in factors affecting my coverage during any of my present and future operations.*

\_\_\_\_\_  
Signature of Owner or Authorized Representative

\_\_\_\_\_  
Title

\_\_\_\_\_  
Date

Please complete the "SEALED BID" information on the next page

Cherry Bomb Mix (61-051-25)  
T25N, R14W, SEC. 11; Benzie COUNTY

In response to the notice of sale to be held 4:00 p.m. (local time) on April 16, 2026, I am hereby submitting my sealed bid (firm offer) for the following forest products to be cut. Bids for individual species must be at or above the advertised price. All non-responsive bid forms may be rejected.

<u>PRODUCTS &amp; SPECIES</u>	<u>ESTIMATED VOLUME*</u>	<u>ADVERTISED PRICE</u>	<u>BID PRICE/UNIT</u>
<b>Sawtimber</b>			
B. T. Aspen	18.1 MBF	\$ 124.00/MBF	\$ _____
Black Cherry	103.2 MBF	\$ 143.00/MBF	\$ _____
Red Maple	386.6 MBF	\$ 101.00/MBF	\$ _____
<b>Pulpwood</b>			
B. T. Aspen	37 Cords	\$ 24.60/Cord	\$ _____
Black Cherry	305 Cords	\$ 17.65/Cord	\$ _____
Red Maple	947 Cords	\$ 17.65/Cord	\$ _____

\*The volumes are statistically estimated within plus (+) or minus (-) 18.31 percent at 95% confidence level. These estimated volumes are final and not subject to adjustment. Prospective bidders are urged to examine this timber and to make their own estimates of quantity and quality.

I understand that any or all bids may be rejected. All bids must be signed and all bid items must be bid or the bid form may be rejected. I also understand that consideration and awarding a contract will be based upon my past performance and ability to complete the contract based upon equipment and staffing subject to my control.

FEDERAL ID: \_\_\_\_\_ - \_\_\_\_\_ or SOCIAL SECURITY NUMBER: \_\_\_\_\_ - \_\_\_\_\_ - \_\_\_\_\_

Company or individual bidding: \_\_\_\_\_

Company representative's name: \_\_\_\_\_

Address: \_\_\_\_\_

City: \_\_\_\_\_ State: \_\_\_\_\_ Zip: \_\_\_\_\_

IF AVAILABLE, PLEASE PLACE THE PERSONALIZED LABEL FROM YOUR PROSPECTUS IN THE ABOVE BOX.

Individual or company representative's signature: \_\_\_\_\_ Date: \_\_\_\_\_

Phone number : \_\_\_\_\_ Email (optional): \_\_\_\_\_

**THE WINNING BIDDER MUST COMPLETE THE VERIFICATION OF WORKER'S DISABILITY COMPENSATION ACT COMPLIANCE (ON REVERSE SIDE IF DOUBLE SIDED) WITHIN 21 DAYS OF SALE AWARD DATE**



<b>FOR DEPARTMENT USE ONLY</b>
Sale Number (XX - XXX - XX - XX)
Forest Management Unit:

## TIMBER SALE VERIFICATION OF WORKER'S DISABILITY COMPENSATION ACT COMPLIANCE

*As required by Act 317, P.A. 1969 (Worker's Compensation) and  
Part 5 of Act 451 of 1994, as amended.*

### VERIFICATION OF WORKER'S DISABILITY COMPENSATION ACT COMPLIANCE

- This verification must be completed and submitted within 21 days of contract award and prior to the issuance of the timber sale contract.
- In addition, if boxes 2B or 2C are checked, then Notice of Exclusion or Certificate of Insurance must be submitted within twenty-one (21) days of the contract award and prior to the issuance of the timber sale contract.
- All information must be typed or printed except for written signatures.

Please Check Appropriate Categories:

1. My business is organized as (you **must** check one of the boxes below):
  - A.  Sole Proprietorship (individual)
  - B.  Partnership
  - C.  Corporation
2. You **must** check one of the boxes below:
  - A.  I certify my business is a sole proprietorship and it has no employees but the sole proprietor. I am not subject to the Worker's Compensation Laws.
  - B.  I certify my business has satisfied its obligation to the Worker's Compensation Act through the use of an approved Notice of Exclusion (BWC-337, Rev. 5/96). I will provide a copy of the Notice of Exclusion within 21 days of the contract award. (For questions or a copy of the BWC-337, please call the Worker's Compensation Bureau at 517-322-1195).
  - C.  I certify my business has a Worker's Compensation Policy. I will provide an original Certificate of Insurance within twenty-one (21) days of the contract award.
3. If you have checked item 2(A) or 2(B), you **must** indicate the number of **both** full-time and part-time employees, other than yourself, including family members and active partners (if none, you must enter "0").

\_\_\_\_\_ Full-time Employees                      \_\_\_\_\_ Part-time Employees

Name of Business		Federal ID (or) Social Security No.	
Address		Telephone (        )	
City	State	ZIP	

*I hereby certify that the above information is true and correct. I agree to notify the Michigan DNR of any changes that occur in factors affecting my coverage during any of my present and future operations.*

\_\_\_\_\_  
Signature of Owner or Authorized Representative

\_\_\_\_\_                      \_\_\_\_\_  
Title                                      Date

**Please complete the "SEALED BID" information on the next page**