

# OIL AND GAS WELL LOCATIONS AND DNR OWNERSHIP

Charlevoix County

Map Locator



## LEGEND

### OIL AND GAS WELLS

- Oil
- ✱ Natural Gas
- ✱ Gas Condensate
- ✱ Gas Injection
- ✱ Gas Storage
- ⊙ Liquefied Petroleum Gas Storage
- ✱ Gas Production and Brine Disposal
- △ Brine Disposal
- ◇ Dry Hole
- Water Injection
- ⊙ Other Injection
- ⊙ Observation
- ⊙ Other
- Permitted Well Location

### SURFACE LOCATIONS

- × Surface of Directional Well

### DIRECTIONAL LINES

- ↗ Directional
- ↘ Horizontal (90 deg.)

### PLUGGED WELLS

- / Plugged Well Symbol

### WELL PERMIT NUMBER

- 45123 Permit Number

### DNR OWNERSHIP

- Surface
- Mineral and Surface
- Minerals
- Mixed Ownership
- Other Rights
- R Reserved Minerals
- 40.00 Acres of Surface Ownership
- 40.00 Acres of Mineral and Surface Ownership
- 40.00 Acres of Mineral Ownership
- ROW DNR has a Right of Way and/or an acquired easement(s) from private landowner within the quarter-quarter section

### TRANSPORTATION

- Two-Track and Seasonal Roads
- Highways
- Residential Roads
- Railroads
- Paved Airports
- Unpaved Airports
- County Roads

### UTILITY

- Pipelines and Transmission Lines
- Electric Transmission Lines

### POLITICAL

- Township Boundaries
- Great Lakes Shoreline
- County Boundary
- Section Lines

### HYDROLOGY

- Lakes and Ponds
- Rivers and Streams
- Drains and Intermittent Streams



### MAP INFORMATION

Oil and gas well information obtained from drilling records on file at the Michigan Department of Environmental Quality (MDEQ), Geological and Land Management Division. Additional information on oil and gas wells can be obtained by contacting GLMD, MDEQ.

DNR Land Ownership information is derived weekly from the MDNR's Land Ownership Database. Parcel information is compiled to the quarter-quarter section level. Multiple parcels with varying types of ownership within a quarter-quarter section result in the Mixed Ownership Category. Non-ownership rights are classified as Other Rights.

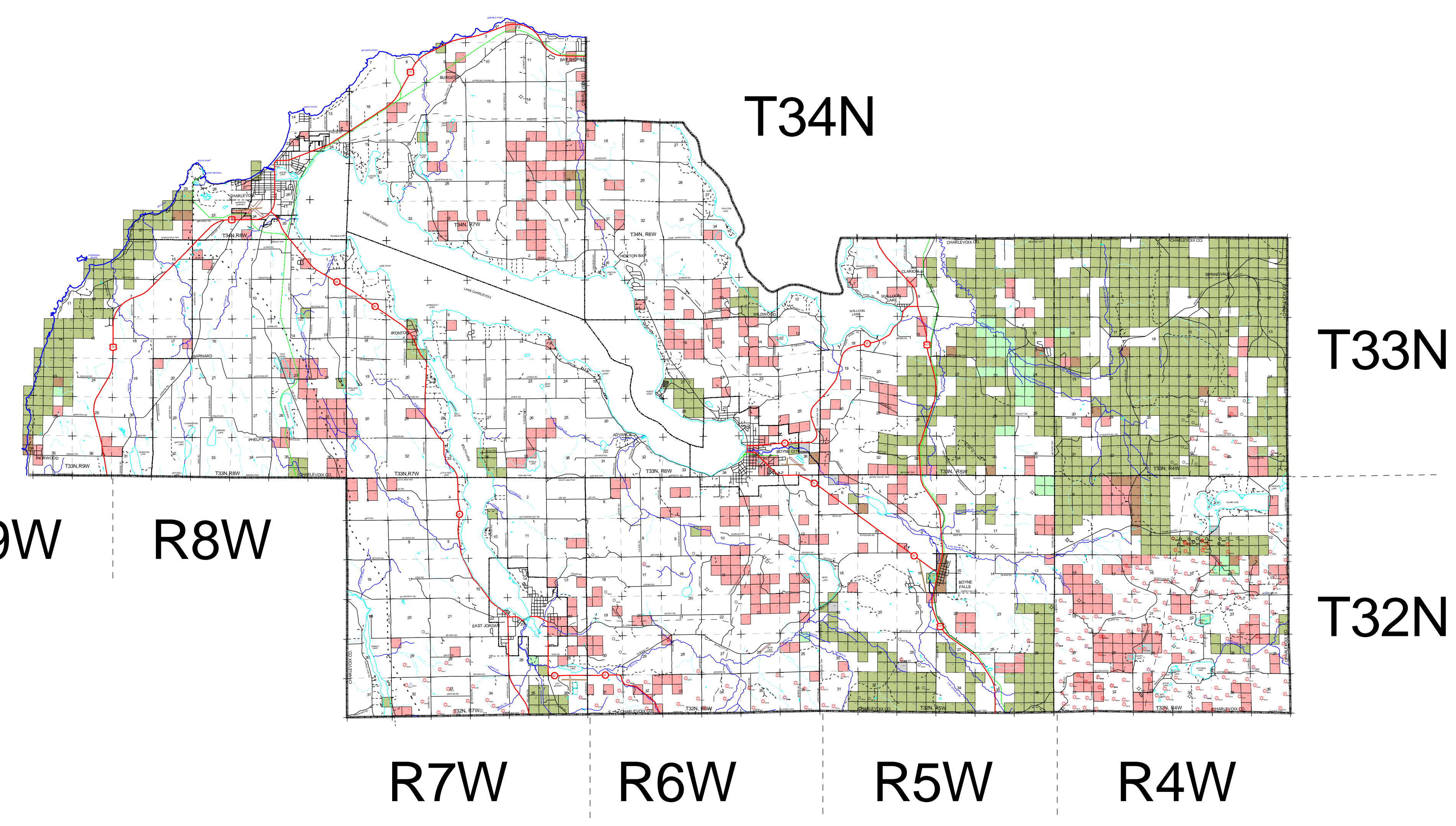
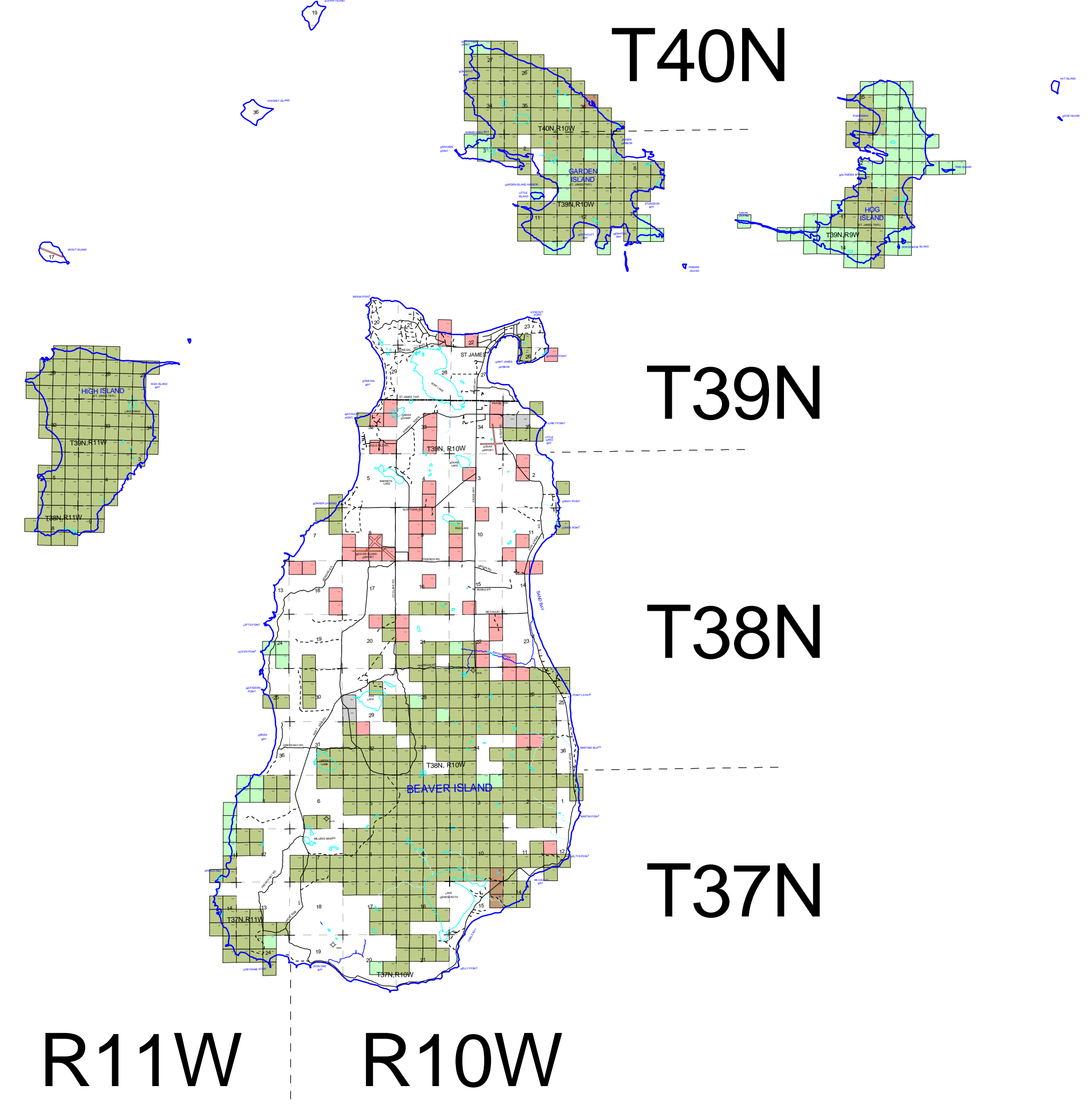
### COMPLETENESS and QUALITY

In general, the data does not reflect platted parcels, Private Claims, and parcels within the City of Detroit and/or Saint Clair County Flats.

The amount of acreage owned within a quarter-quarter section is identified by acreage labels in the upper-right corner of each quarter-quarter section.

The quality and completeness of this data is unknown. It is suggested that this data be combined with a second source, such as plat maps, to further identify ownership.

The information displayed on this map is intended for general planning purposes only. Specific ownership information should be verified by contacting the MDNR.



MICHIGAN DEPARTMENT OF NATURAL RESOURCES  
Forest, Mineral and Fire Management