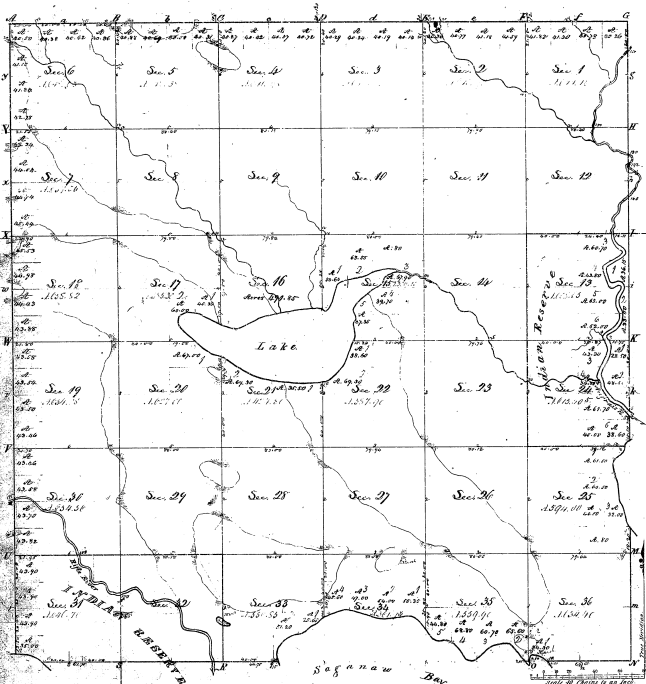


R¹-Survey
 Township N^o19.N. Range N^o6.East
 Mer. (Mich.)



Section	Acres	Owner	Acres	Owner	Acres	Owner
1	360.00	5 1920.00	3.60	1920.00	3.60	1920.00
2	360.00	5 1920.00	3.60	1920.00	3.60	1920.00
3	360.00	5 1920.00	3.60	1920.00	3.60	1920.00
4	360.00	5 1920.00	3.60	1920.00	3.60	1920.00
5	360.00	5 1920.00	3.60	1920.00	3.60	1920.00
6	360.00	5 1920.00	3.60	1920.00	3.60	1920.00
7	360.00	5 1920.00	3.60	1920.00	3.60	1920.00
8	360.00	5 1920.00	3.60	1920.00	3.60	1920.00
9	360.00	5 1920.00	3.60	1920.00	3.60	1920.00
10	360.00	5 1920.00	3.60	1920.00	3.60	1920.00
11	360.00	5 1920.00	3.60	1920.00	3.60	1920.00
12	360.00	5 1920.00	3.60	1920.00	3.60	1920.00
13	360.00	5 1920.00	3.60	1920.00	3.60	1920.00
14	360.00	5 1920.00	3.60	1920.00	3.60	1920.00
15	360.00	5 1920.00	3.60	1920.00	3.60	1920.00
16	360.00	5 1920.00	3.60	1920.00	3.60	1920.00
17	360.00	5 1920.00	3.60	1920.00	3.60	1920.00
18	360.00	5 1920.00	3.60	1920.00	3.60	1920.00
19	360.00	5 1920.00	3.60	1920.00	3.60	1920.00
20	360.00	5 1920.00	3.60	1920.00	3.60	1920.00
21	360.00	5 1920.00	3.60	1920.00	3.60	1920.00
22	360.00	5 1920.00	3.60	1920.00	3.60	1920.00
23	360.00	5 1920.00	3.60	1920.00	3.60	1920.00
24	360.00	5 1920.00	3.60	1920.00	3.60	1920.00
25	360.00	5 1920.00	3.60	1920.00	3.60	1920.00
26	360.00	5 1920.00	3.60	1920.00	3.60	1920.00
27	360.00	5 1920.00	3.60	1920.00	3.60	1920.00
28	360.00	5 1920.00	3.60	1920.00	3.60	1920.00
29	360.00	5 1920.00	3.60	1920.00	3.60	1920.00
30	360.00	5 1920.00	3.60	1920.00	3.60	1920.00
31	360.00	5 1920.00	3.60	1920.00	3.60	1920.00
32	360.00	5 1920.00	3.60	1920.00	3.60	1920.00
33	360.00	5 1920.00	3.60	1920.00	3.60	1920.00
34	360.00	5 1920.00	3.60	1920.00	3.60	1920.00
35	360.00	5 1920.00	3.60	1920.00	3.60	1920.00
36	360.00	5 1920.00	3.60	1920.00	3.60	1920.00

32-1-3

Total number of Acres 12,960.00

Survey	Acres	Owner	Acres	Owner
Township	12,960.00	5 1920.00	3.60	1920.00
Section	12,960.00	5 1920.00	3.60	1920.00

All above list of Township N19 North of Range N6 East of the
 Meridian of Michigan, is a true and correct copy of the
 original survey thereof, as the same has been examined and approved
 by the Surveyor General of Michigan.
 Surveyor General's Office, Lansing, Michigan
 J. W. [Signature]

