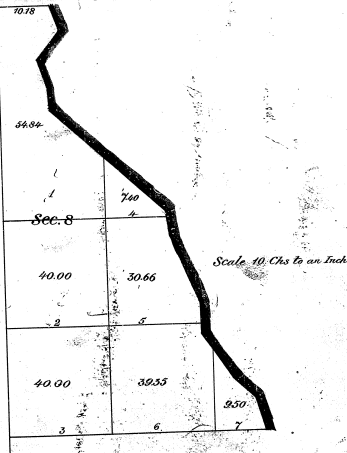


41-17^(u)

SECTION 8 TOWNSHIP 32 NORTH RANGE 10 WEST, MICHIGAN.



The above corrected diagram of Section 8, Township 32 North, Range 10 West, Michigan, has been prepared in this Office for the purpose of maintaining the position of Lots 1, 2, & 3, as sold by the original survey, and is hereby approved.

General Land Office
Washington, D.C. June, 12, 1884

H. Bullard
Commissioner

RECEIVED AT
JUN 16 1884
STATE LAND OFFICE

See Letter Com'r. Gen'l Land Office of June 12, 1884.