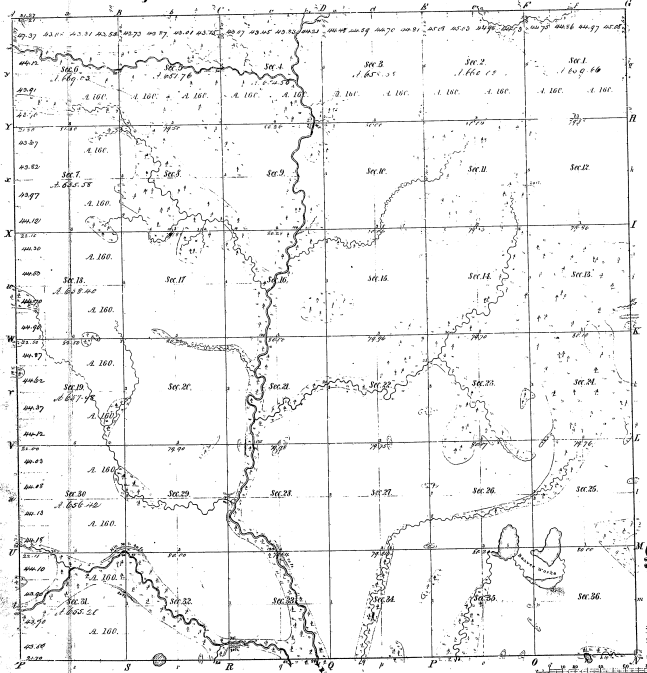


Resurvey
Township 1° 22.1' Range 1° 5 H. Mer. Mich



Meanders of			
Pole Course 151°	Pole Course 151°	Pole Course 151°	Pole Course 151°
2-35			

21-35

Total number of Acres 23257.19

Survey designated	By Whom Surveyed	Date of Contract	Amount of Survey	When Surveyed	Original No. and date of the Survey
Township 1° 22.1'	Henry G. Brown	July 18, 1846	N 25 126	1846	1137
Subdivision	J. S. Hall	July 14, 1846	60 21. 28	1846	1138

The above map of Township 1° 22.1' of Range 1° 5 H. of the Principal Meridian Michigan is strictly conformable to the field notes of the survey filed on file in this Office which have been examined and approved.

Survey General's Office
 Detroit July 21st 1846. Leucius Lyon, Gen'l Supt.