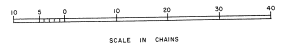
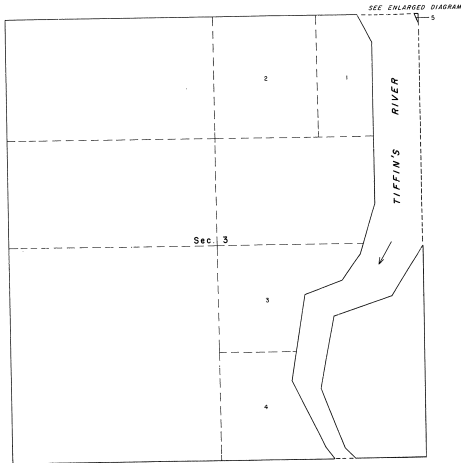
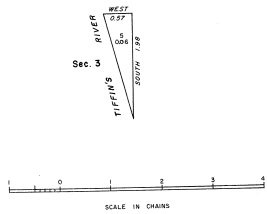


23-34

TOWNSHIP 12 NORTH, RANGE 3 EAST, MICHIGAN MERIDIAN, MICHIGAN
 SUPPLEMENTAL PLAT, SECTION 3



ENLARGED DIAGRAM



This supplemental plat, based upon the plat approved April 23, 1962, has been prepared as an administrative measure to provide a lot designation and area for that portion of the ENLARGED section 3, situated east of Tiffin's River. The ENLARGED plat approximately depicts the north side of new lot 3 as 0.75 ch. distant.

UNITED STATES DEPARTMENT OF THE INTERIOR
 BUREAU OF LAND MANAGEMENT
 Washington, D. C. June 28, 1965

This plat, showing new lotting, is based upon the official records, and having been correctly prepared in accordance with the regulations, is hereby accepted.

For the Director

E. L. Smith
 Chief, Division of Engineering