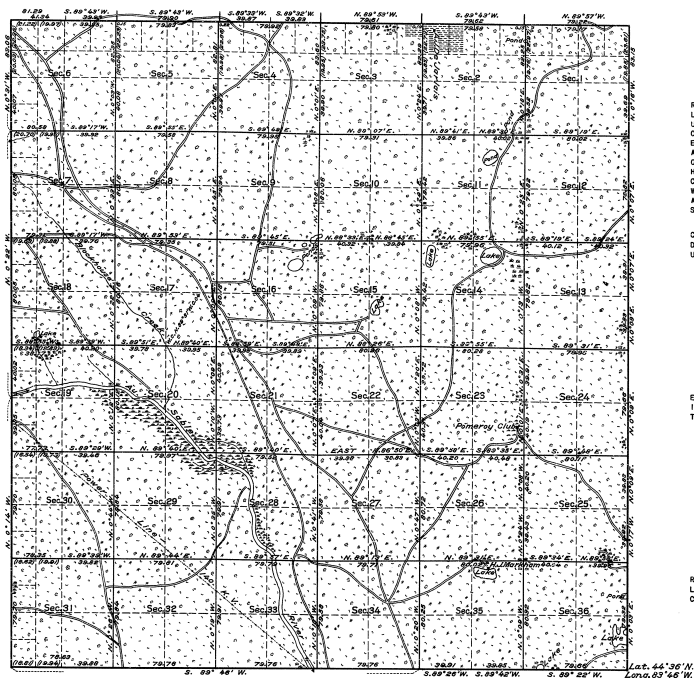


TOWNSHIP No.26 NORTH, RANGE No.5 EAST, MICHIGAN MERIDIAN, MICHIGAN.
DEPENDENT RESURVEY.

22-17

22-17
②



MEMORANDUM.

THIS PLAT OF THE RESURVEY OF TOWNSHIP 26 NORTH, RANGE 5 EAST, DELINEATES A RETRACEMENT AND REESTABLISHMENT OF THE LINES OF THE ORIGINAL SURVEY AS SHOWN UPON THE PLAT APPROVED AUGUST 4, 1846, IN THEIR TRUE ORIGINAL POSITIONS ACCORDING TO THE BEST AVAILABLE EVIDENCE OF THE POSITION OF THE ORIGINAL CORNERS. ALL DIFFERENCES BETWEEN THE MEASUREMENTS SHOWN ON THE ORIGINAL PLAT AND THOSE DERIVED IN THE RETRACEMENT HAVE BEEN DISTRIBUTED PROPORTIONALLY BETWEEN ACCEPTED CORNERS IN ACCORDANCE WITH SURVEYING RULES. REFERENCE WILL BE MADE TO THE ORIGINAL PLAT FOR THE SHOWING OF AREAS AND MORE DETAILED DESCRIPTIONS OF THE VARIOUS SMALLER SUBDIVISIONS.

THE SURVEY WAS EXECUTED PURSUANT TO AUTHORITY CONTAINED IN GENERAL LAND OFFICE LETTER 1408604 "E", DATED MARCH 4, 1931, WHICH BEARS DEPARTMENTAL APPROVAL UNDER DATE OF MARCH 5, 1931.

OFFICE OF U.S. SUPERVISOR OF SURVEYS,
DENVER, COLORADO, NOVEMBER 18, 1933.

THE ABOVE PLAT OF TOWNSHIP NO. 26 NORTH, RANGE NO. 5 EAST OF THE MICHIGAN MERIDIAN, IN THE STATE OF MICHIGAN, IS STRICTLY CONFORMABLE TO THE FIELD NOTES OF THE SURVEY THEREOF, WHICH HAVE BEEN EXAMINED AND APPROVED.

Samuel P. Rowan
U.S. SUPERVISOR OF SURVEYS.

DEPARTMENT OF THE INTERIOR,
GENERAL LAND OFFICE,
WASHINGTON, D. C., JULY 2, 1934

THE SURVEY REPRESENTED BY THIS PLAT, HAVING BEEN CORRECTLY EXECUTED IN ACCORDANCE WITH THE REQUIREMENTS OF LAW AND THE REGULATIONS OF THIS OFFICE, IS HEREBY ACCEPTED.

D. H. Cameron
ACTING ASSISTANT COMMISSIONER.

SCALE: 40 CHAINS TO AN INCH. AREA RESURVEYED, 23,159.77 ACRES.

LINES DESIGNATED	BY WHOM SURVEYED	GROUP		WHEN SURVEYED	
		NO.	DATE	MILEAGE MLS. CHS.	BEGUN COMPLETED
EXTERIOR	GUY R. VEAL,	25	MAY 27, 1931	12 0.78	MAY 23, 1932
SUBDIVISIONAL	U.S.C. ENGINEER.		JUNE 27, 1932.	60 3.68	JULY 27, 1932.