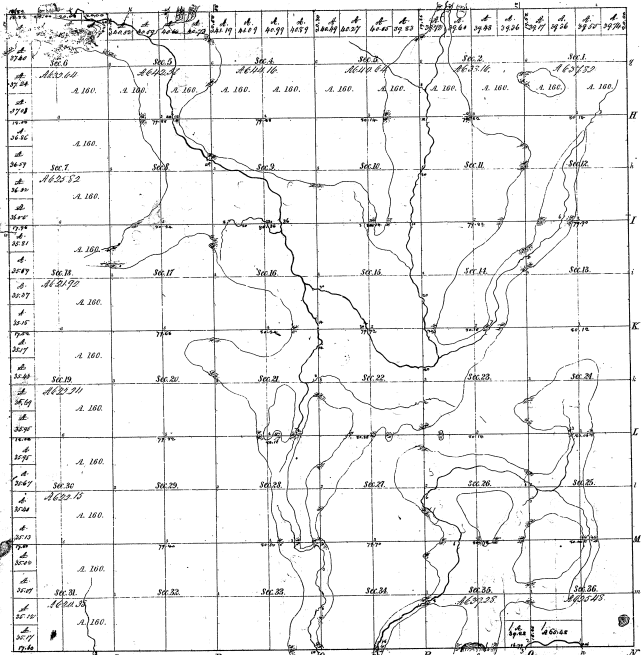


Township N^o 27 N. Range N^o 8 East Mer.



Numbers of feet of a mile in Sec. 36 & 36			
Partial Course	1822	Partial Course 1822	Partial Course 1822
1	5649	5649	
2	5649	5649	
3	5649	5649	
4	5649	5649	
5	5649	5649	
6	5649	5649	
7	5649	5649	
8	5649	5649	
9	5649	5649	
10	5649	5649	
11	5649	5649	
12	5649	5649	
13	5649	5649	
14	5649	5649	
15	5649	5649	
16	5649	5649	
17	5649	5649	
18	5649	5649	
19	5649	5649	
20	5649	5649	
21	5649	5649	
22	5649	5649	
23	5649	5649	
24	5649	5649	
25	5649	5649	
26	5649	5649	
27	5649	5649	
28	5649	5649	
29	5649	5649	
30	5649	5649	
31	5649	5649	
32	5649	5649	
33	5649	5649	
34	5649	5649	
35	5649	5649	
36	5649	5649	
37	5649	5649	
38	5649	5649	
39	5649	5649	
40	5649	5649	
41	5649	5649	
42	5649	5649	
43	5649	5649	
44	5649	5649	
45	5649	5649	
46	5649	5649	
47	5649	5649	
48	5649	5649	
49	5649	5649	
50	5649	5649	
51	5649	5649	
52	5649	5649	
53	5649	5649	
54	5649	5649	
55	5649	5649	
56	5649	5649	
57	5649	5649	
58	5649	5649	
59	5649	5649	
60	5649	5649	
61	5649	5649	
62	5649	5649	
63	5649	5649	
64	5649	5649	
65	5649	5649	
66	5649	5649	
67	5649	5649	
68	5649	5649	
69	5649	5649	
70	5649	5649	
71	5649	5649	
72	5649	5649	
73	5649	5649	
74	5649	5649	
75	5649	5649	
76	5649	5649	
77	5649	5649	
78	5649	5649	
79	5649	5649	
80	5649	5649	
81	5649	5649	
82	5649	5649	
83	5649	5649	
84	5649	5649	
85	5649	5649	
86	5649	5649	
87	5649	5649	
88	5649	5649	
89	5649	5649	
90	5649	5649	
91	5649	5649	
92	5649	5649	
93	5649	5649	
94	5649	5649	
95	5649	5649	
96	5649	5649	
97	5649	5649	
98	5649	5649	
99	5649	5649	
100	5649	5649	

22-13

22-13

Total number of Acres 32,130.97

Survey Established	By Whom Surveyed	Date of Contract	Amount of Survey	When Surveyed	How far was run in the "C" line
Township Lines	Louis Adams	Jan. 19, 1829	4,000 Ac.		
Subdivisions	W. L. Adams	Feb. 25, 1829		6 th of 1829	

The above map of Township N^o 27 N. of Range N^o 8 East of the Principal Meridian, is actually correct to the first order of the survey there on file in this Office, which have been examined and approved.

Surveyor General's Office
 Washington, Aug. 10, 1829.

W. L. Adams