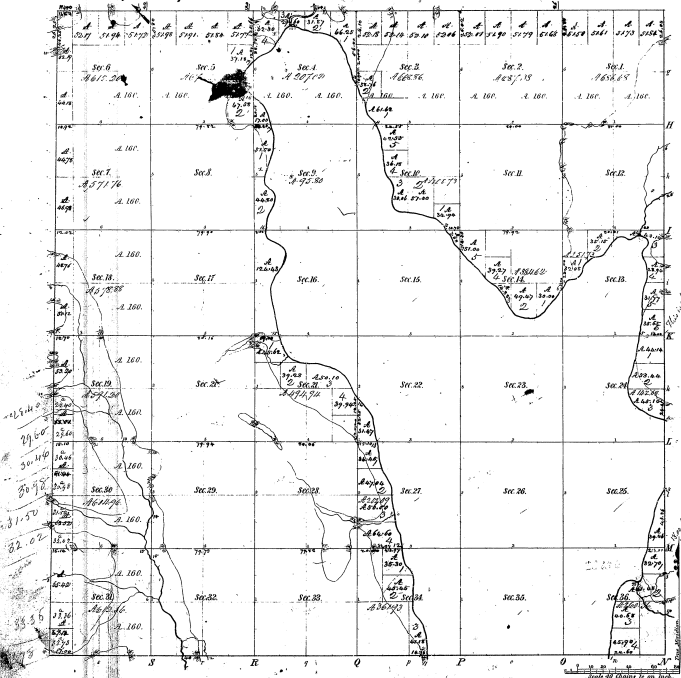


Section 28-7-6
111

Township N. 28 N Range N. 7 East Mer.



Mentions of a large tract.			
Point	Course	Dist	Point
1	N 77° 15' E	128.57	2
2	S 77° 15' W	128.57	3
3	N 77° 15' E	128.57	4
4	S 77° 15' W	128.57	5
5	N 77° 15' E	128.57	6
6	S 77° 15' W	128.57	7
7	N 77° 15' E	128.57	8
8	S 77° 15' W	128.57	9
9	N 77° 15' E	128.57	10
10	S 77° 15' W	128.57	11
11	N 77° 15' E	128.57	12
12	S 77° 15' W	128.57	13
13	N 77° 15' E	128.57	14
14	S 77° 15' W	128.57	15
15	N 77° 15' E	128.57	16
16	S 77° 15' W	128.57	17
17	N 77° 15' E	128.57	18
18	S 77° 15' W	128.57	19
19	N 77° 15' E	128.57	20
20	S 77° 15' W	128.57	21
21	N 77° 15' E	128.57	22
22	S 77° 15' W	128.57	23
23	N 77° 15' E	128.57	24
24	S 77° 15' W	128.57	25
25	N 77° 15' E	128.57	26
26	S 77° 15' W	128.57	27
27	N 77° 15' E	128.57	28
28	S 77° 15' W	128.57	29
29	N 77° 15' E	128.57	30
30	S 77° 15' W	128.57	31
31	N 77° 15' E	128.57	32
32	S 77° 15' W	128.57	33
33	N 77° 15' E	128.57	34
34	S 77° 15' W	128.57	35
35	N 77° 15' E	128.57	36
36	S 77° 15' W	128.57	37

41.44
79.60
30.14
20.90
31.30
32.02
33.55
34.19

Total number of Acres 1525.5 1/2

Section Assigned	To Whom Assigned	Date of Contract	Amount of Acres	When Surveyed	When Surveyed
Township	James A. McArthur	Dec. 19 1829	1525 1/2	1829	1829
Subdivisions	W. C. Johnson	Feb. 25 1830		1830	1830

The above Map of Township N. 28 N. of Range N. 7 East of the Principal Meridian, Michigan, is hereby approved to the full extent of the survey thereon as far as this office and the Government are concerned.

Surveyor General's Office
Cincinnati, Aug. 14, 1830

W. C. Johnson

22-11
22-11