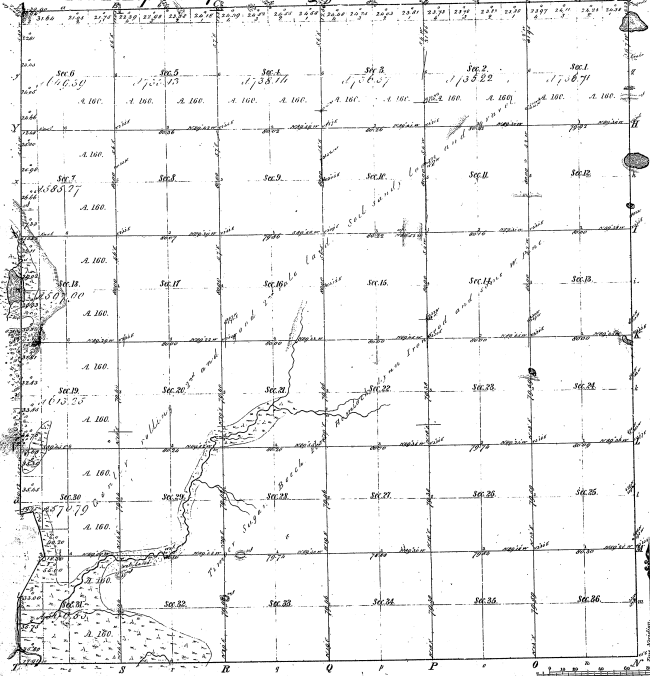


**Re-Survey of**  
**Township N° 27 N. Range N° 14 W. Mer. Mich.**



**Total number of Acres, 25,266.92**

Survey designated	By whom surveyed	Date of Contract	Amount of Survey	When Surveyed	Area of the same in the Section 36
Public Lands	James G. Wainwright	April 29, 1850	2,720 Ac.	1850	2,720
Subdivisions	Louise Lyon	April 29, 1850	21,546.92	1850	21,546.92

The above Copy of Township 27 N. Range 14 W. West of the Principal Meridian Michigan is hereby confirmed to the full notes of the survey thereof in file in this department here by command and approval  
 Surveyor General Office  
 Detroit Feb. 24 1850

Minutes of			
Public Lands	1844-1848	1849-1853	1854-1858

17-10

Remains in 1854 table

320 - The black figures and marks show the positions of the old corners and lines.

*Rachel A. Mc*  
*Sur Gen.*