



**PLAT OF PINE ISLAND**  
**IN MUNUSONG BAY, ST. MARY'S RIVER,**  
 in Sec. 29, T. 44N., R. 2E., Mich. Mer.,

MICHIGAN.

Surveyed by Francis McKinney, U.S. Transitman, June 25-29, 1914,  
 under special instructions from the Com<sup>r</sup> of the G.L.O., dated May 27, 1914.

Scale, 10 chs. to an inch.

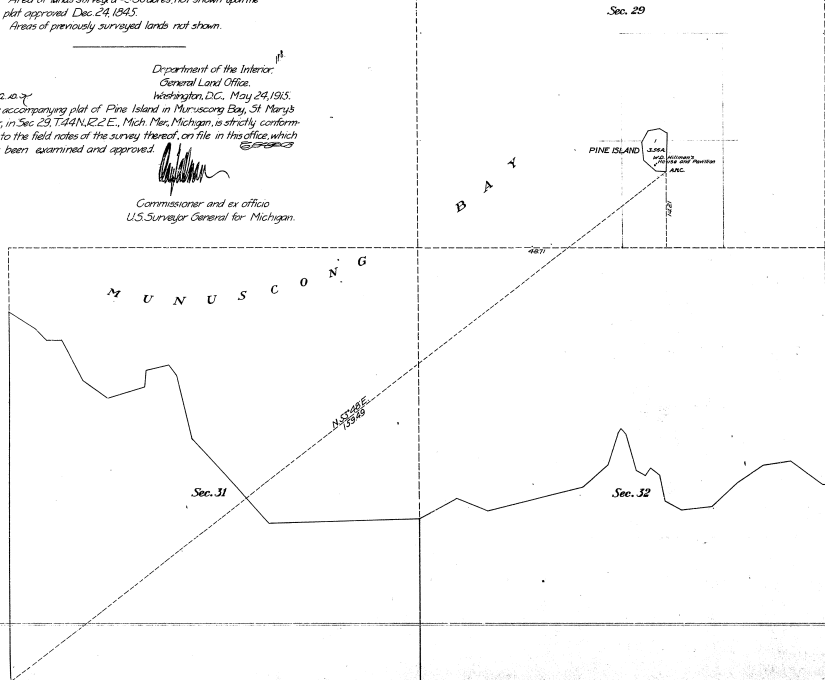
Area of lands surveyed = 3.56 acres, not shown upon the  
 plat approved Dec. 24, 1915.

Areas of previously surveyed lands not shown.

Department of the Interior,  
 General Land Office,  
 Washington, D.C., May 24, 1915.

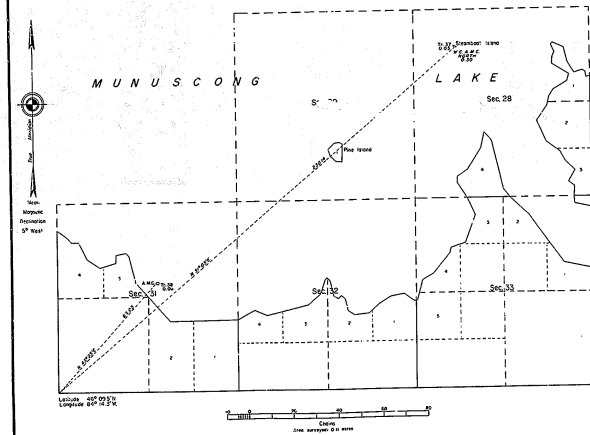
The accompanying plat of Pine Island in Munusong Bay, St. Mary's  
 River, in Sec. 29, T. 44N., R. 2E., Mich. Mer., Michigan, is strictly conform-  
 able to the field notes of the survey thereof, on file in this office, which  
 have been examined and approved.

*[Signature]*  
 Commissioner and ex officio  
 U.S. Surveyor General for Michigan.



33-110  
 33-11

TOWNSHIP 44 NORTH, RANGE 2 EAST, OF THE MICHIGAN MERIDIAN, MICHIGAN.  
SURVEY OF ISLANDS



A history of surveys is contained in the field notes.

This plat represents the survey of two islands in Munuscong Lake, T. 44 N., R. 2 E., Michigan Meridian, Michigan.

Except as indicated herein, the lottings and areas are as shown on the plats approved December 24, 1845, and May 24, 1913.

Survey executed by Gary L. Kratz, Cadastral Surveyor, beginning May 23, 1976, and completed July 31, 1976, pursuant to Special Instructions dated June 3, 1977, for Group No. 78, Michigan.

UNITED STATES DEPARTMENT OF THE INTERIOR  
BUREAU OF LAND MANAGEMENT  
Denver, Colorado November 19, 1981

This plat is strictly conformable to the approved field notes, and the survey, having been correctly executed in accordance with the requirements of law and the regulations of this Bureau, is hereby accepted.

For the Director

Acting Chief, Cadastral Survey  
Examination and Approval Staff

33-11