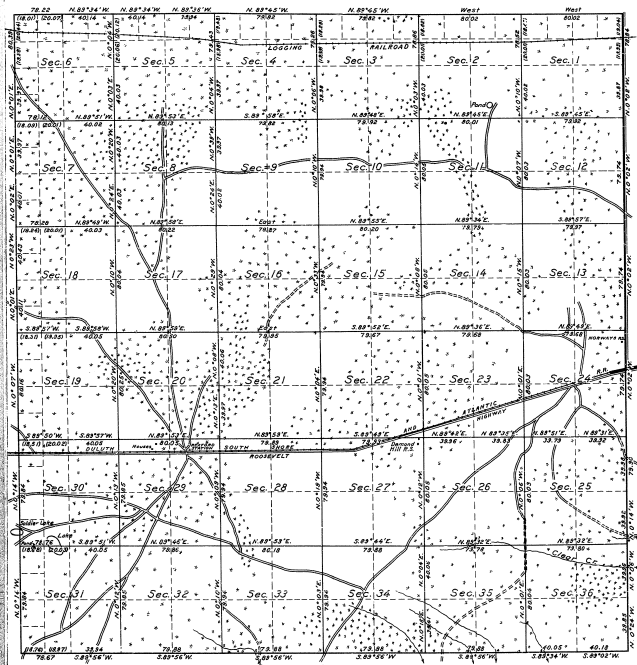




Dependent Resurvey Plat of T.46N., R.4 W., Mich. Mer., Michigan.

34-170



MEMORANDUM.

This plat of the resurvey of Township 46 North, Range 4 West, of the Michigan Meridian, Michigan, delineates a retracement and re-establishment of the lines of the original survey of the Township as shown upon the plat approved March 14, 1909, in their true original positions according to the best available evidence of the positions of the original corners. All differences between the measurements shown on the original plat and those derived in retracement have been distributed proportionally between accepted corners in accordance with surveying rules.

Titles and areas based upon the original approved plat remain undisturbed for partition and description.

LEGEND.

Scale: 1 inch = 40 chains.

Surveyed by Guy H. Weil, U. S. Cadastral Engineer, from July 4 to August 14, 1909, inclusive, under special instructions for Group No. 10, Michigan, dated June 12, 1905, issued by Frank M. Johnson, Supervisor of Surveys, which were approved by the Commission of the General Land Office on June 27, 1905.

Office of U. S. Supervisor of Surveys.  
Denver, Colorado, June 15, 1907.

The above resurvey plat of Township 46 North, Range 4 West, of the Michigan Meridian, in the State of Michigan, is strictly conformable to the field notes of the resurvey hereof, which have been examined and approved.

*Frank M. Johnson*  
U. S. Supervisor of Surveys.

DEPARTMENT OF THE INTERIOR.  
GENERAL LAND OFFICE.

Washington, D. C., December 28 1907.

The resurvey represented by this plat, having been correctly executed in accordance with the requirements of law and the regulations of this office, is hereby accepted.

*J. C. ...*  
Acting Assistant Commissioner.