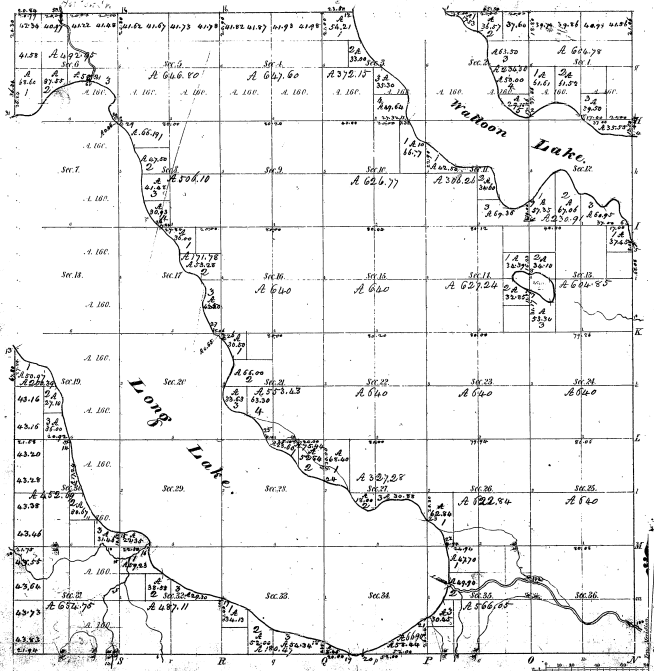


Township 1° 33' N Range 1° 6' W Mer.



18-15

Municipality of Lakes			
Public Section 1845	Public Section 1846	Public Section 1847	Public Section 1848
1	1845	1846	1847
2	1845	1846	1847
3	1845	1846	1847
4	1845	1846	1847
5	1845	1846	1847
6	1845	1846	1847
7	1845	1846	1847
8	1845	1846	1847
9	1845	1846	1847
10	1845	1846	1847
11	1845	1846	1847
12	1845	1846	1847
13	1845	1846	1847
14	1845	1846	1847
15	1845	1846	1847
16	1845	1846	1847
17	1845	1846	1847
18	1845	1846	1847
19	1845	1846	1847
20	1845	1846	1847
21	1845	1846	1847
22	1845	1846	1847
23	1845	1846	1847
24	1845	1846	1847
25	1845	1846	1847
26	1845	1846	1847
27	1845	1846	1847
28	1845	1846	1847
29	1845	1846	1847
30	1845	1846	1847
31	1845	1846	1847
32	1845	1846	1847
33	1845	1846	1847
34	1845	1846	1847
35	1845	1846	1847
36	1845	1846	1847

Total number of acres 14,666.09

Survey designated	By Whom surveyed	Date of completion	Amount of survey	Plan described	Block No. and date
1-24	W. H. Madigan	1870	16 25 1/2	5 1/2	1870
25-36	C. P. Giddens	1871	16 12 1/2	5 1/2	1871
	S. Prunty	1871	6 21 7/8	5 1/2	1871

The above map of Township 1° 33' N, Range 1° 6' West of the Second Meridian, Michigan, is hereby referred to in the field notes of the survey filed in the office of the Register and approved by the Register of the County of St. Clair, Michigan, Dec. 26, 1880.

John Smith