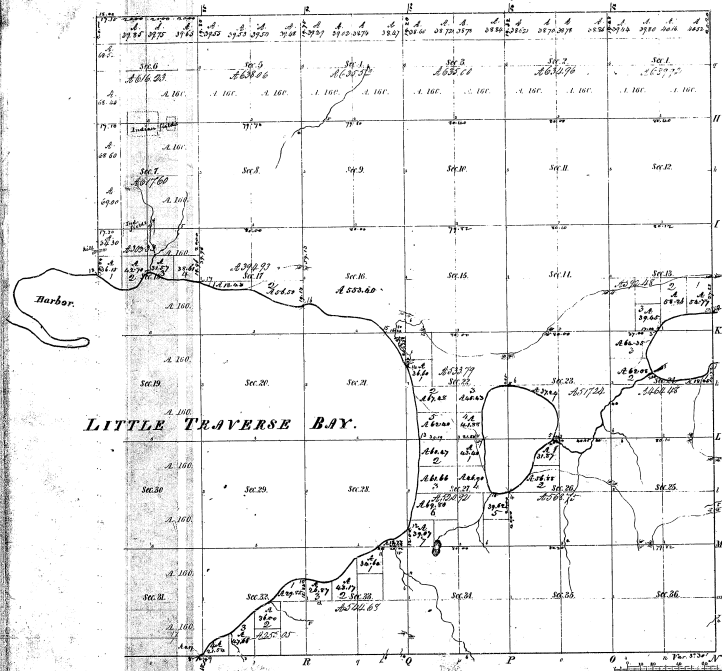


Township 1° 35' N Range 1° 5' W Mer.



LITTLE TRAVERSE BAY.

Total number of Acres 162,553

| Year | When Surveyed | State of Contract | Amount of Survey | When Surveyed | Amount of Survey | When Surveyed | Amount of Survey |
|------|---------------|-------------------|------------------|---------------|------------------|---------------|------------------|
| 1830 | 1830          | 1830              | 1830             | 1830          | 1830             | 1830          | 1830             |
| 1831 | 1831          | 1831              | 1831             | 1831          | 1831             | 1831          | 1831             |
| 1832 | 1832          | 1832              | 1832             | 1832          | 1832             | 1832          | 1832             |
| 1833 | 1833          | 1833              | 1833             | 1833          | 1833             | 1833          | 1833             |
| 1834 | 1834          | 1834              | 1834             | 1834          | 1834             | 1834          | 1834             |
| 1835 | 1835          | 1835              | 1835             | 1835          | 1835             | 1835          | 1835             |
| 1836 | 1836          | 1836              | 1836             | 1836          | 1836             | 1836          | 1836             |
| 1837 | 1837          | 1837              | 1837             | 1837          | 1837             | 1837          | 1837             |
| 1838 | 1838          | 1838              | 1838             | 1838          | 1838             | 1838          | 1838             |
| 1839 | 1839          | 1839              | 1839             | 1839          | 1839             | 1839          | 1839             |
| 1840 | 1840          | 1840              | 1840             | 1840          | 1840             | 1840          | 1840             |

The above map of Township 1° 35' N. Range 1° 5' W. of the Michigan Meridian, Michigan, is hereby approved, as the full and true copy of the original map, as the same has been examined and approved by me, Surveyor General of Michigan, this 21st day of August, 1851.

Surveyor General  
 G. B. Rowland

Minutes of 1841 Township Commission for the First Quarter 1841 First Quarter 1841

18-39

|    |      |      |
|----|------|------|
| 1  | 1840 | 1840 |
| 2  | 1840 | 1840 |
| 3  | 1840 | 1840 |
| 4  | 1840 | 1840 |
| 5  | 1840 | 1840 |
| 6  | 1840 | 1840 |
| 7  | 1840 | 1840 |
| 8  | 1840 | 1840 |
| 9  | 1840 | 1840 |
| 10 | 1840 | 1840 |
| 11 | 1840 | 1840 |
| 12 | 1840 | 1840 |
| 13 | 1840 | 1840 |
| 14 | 1840 | 1840 |
| 15 | 1840 | 1840 |
| 16 | 1840 | 1840 |
| 17 | 1840 | 1840 |
| 18 | 1840 | 1840 |
| 19 | 1840 | 1840 |
| 20 | 1840 | 1840 |
| 21 | 1840 | 1840 |
| 22 | 1840 | 1840 |
| 23 | 1840 | 1840 |
| 24 | 1840 | 1840 |
| 25 | 1840 | 1840 |
| 26 | 1840 | 1840 |
| 27 | 1840 | 1840 |
| 28 | 1840 | 1840 |
| 29 | 1840 | 1840 |
| 30 | 1840 | 1840 |
| 31 | 1840 | 1840 |
| 32 | 1840 | 1840 |
| 33 | 1840 | 1840 |
| 34 | 1840 | 1840 |
| 35 | 1840 | 1840 |
| 36 | 1840 | 1840 |