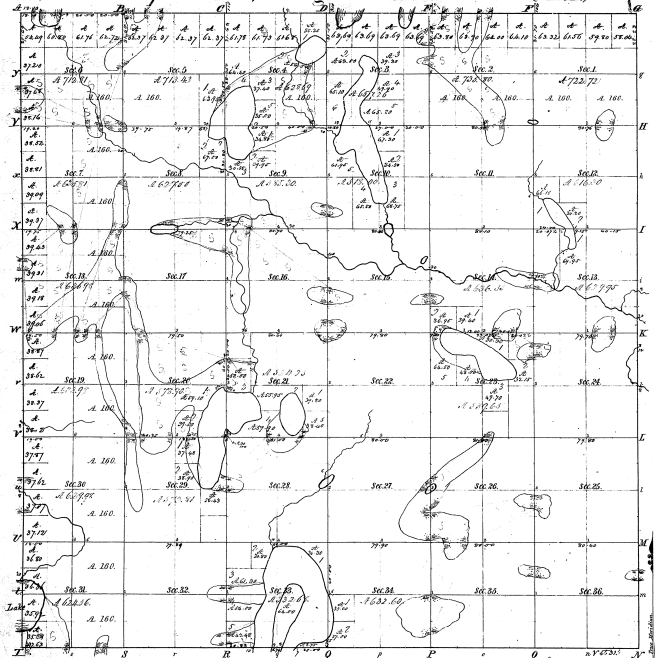


Township N. 8 N., Range N. 9 West Mer. (Mich.)



7-12

Municipality of Lakeside, name of Applicant			
Block	Contents	Area	Value
1
2
3
4
5
6
7
8
9
10
11
12
13
14
15
16
17
18
19
20
21
22
23
24
25
26
27
28
29
30
31
32
33
34
35
36

7-12

Total number of Acres: 2,244.51

Survey designated	By Whom Surveyed	Date of Contract	Amount of Survey	When Surveyed
Township lines	J. D. Campbell	Oct. 21, 1826	26.75.57	2 ^d 7 th 1827
Subdivisions	H. W. Aldrich	Nov. 1, 1827	71.68.83	1 st 7 th 1829

The above Map of Township N. 8 North of Range N. 9 West of the Principal Meridian of this State is a true and correct copy of the original survey thereof as filed in this Office which has been examined and approved.

George S. Peck, State Surveyor.

1829

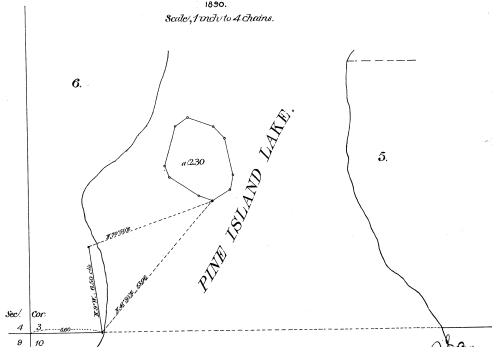
Original.

DIAGRAM
OF AN
ISLAND

53,035'

PINE ISLAND LAKE,
Sec. 3, T. 8 N., R. 10 W., Mich. Mer.
MICHIGAN.
1890.

Scale, 1 inch to 4 chains.



Department of the Interior,
General Land Office,
Washington, D.C. Oct. 31st 1890.

The above diagram of an island in Pine Island Lake, Sec. 3, T. 8 N., R. 10 W., Mich. Mer. is a correct plot of survey executed by Henry M. Gault, U.S. Deputy Surveyor, in pursuance of instructions from the Commissioner of the General Land Office bearing date the 10th of March 1890 and is officially conformable to the field notes of the survey thereof which have been examined and approved.

H. M. Gault
Acting Commissioner of the Office,
Surveyor General of Michigan.

712
C.N. 200
7-12