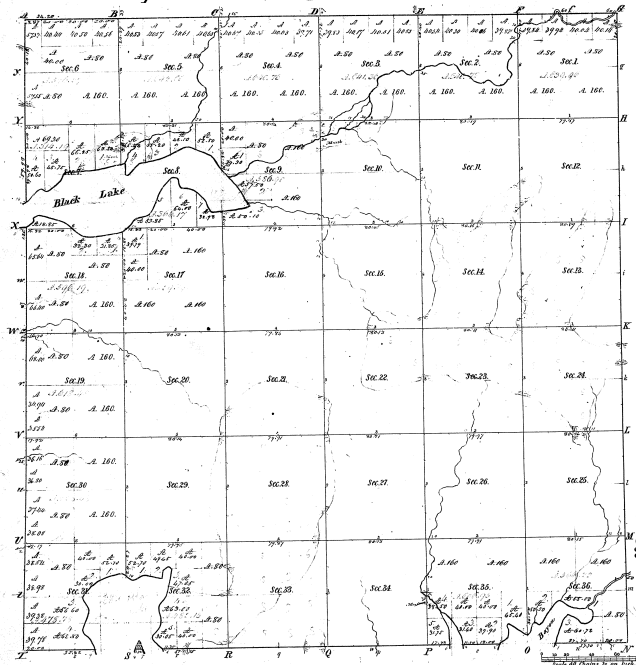


Township N<sup>o</sup> 9 N., Range N<sup>o</sup> 16 West Mer. (Mich.)



| Section | Acres  | Value    | Notes |
|---------|--------|----------|-------|
| 1       | 360.00 | \$144.00 |       |
| 2       | 360.00 | \$144.00 |       |
| 3       | 360.00 | \$144.00 |       |
| 4       | 360.00 | \$144.00 |       |
| 5       | 360.00 | \$144.00 |       |
| 6       | 360.00 | \$144.00 |       |
| 7       | 360.00 | \$144.00 |       |
| 8       | 360.00 | \$144.00 |       |
| 9       | 360.00 | \$144.00 |       |
| 10      | 360.00 | \$144.00 |       |
| 11      | 360.00 | \$144.00 |       |
| 12      | 360.00 | \$144.00 |       |
| 13      | 360.00 | \$144.00 |       |
| 14      | 360.00 | \$144.00 |       |
| 15      | 360.00 | \$144.00 |       |
| 16      | 360.00 | \$144.00 |       |
| 17      | 360.00 | \$144.00 |       |
| 18      | 360.00 | \$144.00 |       |
| 19      | 360.00 | \$144.00 |       |
| 20      | 360.00 | \$144.00 |       |
| 21      | 360.00 | \$144.00 |       |
| 22      | 360.00 | \$144.00 |       |
| 23      | 360.00 | \$144.00 |       |
| 24      | 360.00 | \$144.00 |       |
| 25      | 360.00 | \$144.00 |       |
| 26      | 360.00 | \$144.00 |       |
| 27      | 360.00 | \$144.00 |       |
| 28      | 360.00 | \$144.00 |       |
| 29      | 360.00 | \$144.00 |       |
| 30      | 360.00 | \$144.00 |       |
| 31      | 360.00 | \$144.00 |       |
| 32      | 360.00 | \$144.00 |       |
| 33      | 360.00 | \$144.00 |       |
| 34      | 360.00 | \$144.00 |       |
| 35      | 360.00 | \$144.00 |       |
| 36      | 360.00 | \$144.00 |       |

Total number of Acres 2,592.00

| Survey Designated | By Whom Surveyed | Date of Contract | Amount of Survey | When Surveyed | Plan of the Survey | Plan of the Survey |
|-------------------|------------------|------------------|------------------|---------------|--------------------|--------------------|
| Township lines    | John D. Hall     | Jan 11 1837      | 36               | 1837          | 3 1/2              | 1837               |
| Subdivisions      | John D. Hall     | Jan 11 1837      | 26               | 1837          | 3 1/2              | 1837               |

The above map of Township N<sup>o</sup> 9 N. of Range N<sup>o</sup> 16 West of the Principal Meridian Michigan is a survey of records to the 1837 notes of the survey being on file in the office and has been examined and approved by Survey General Office  
 continued Dec 11 1837

*Survey General*

8-8