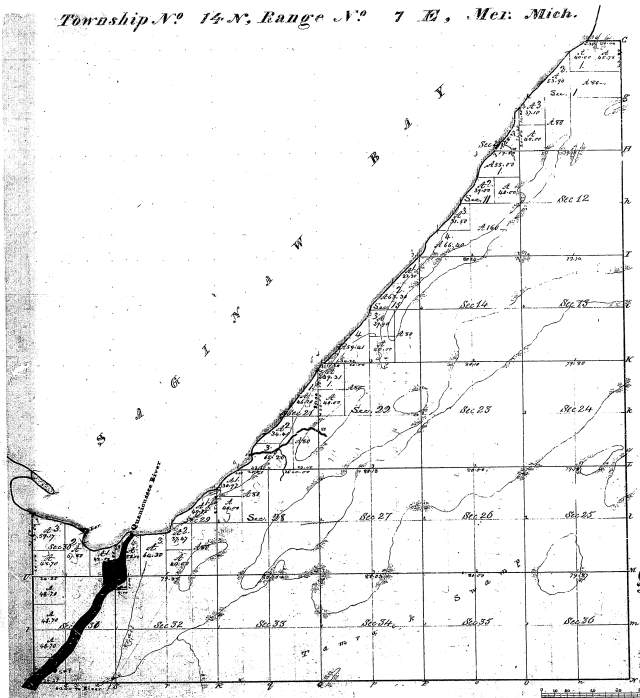


Township N^o 14-N, Range N^o 7 E, Mex. Mich.



Meanders of Saginaw Bay

Point	Course	Dist	Point	Course	Dist	Point	Course	Dist
1	S 52° 28'	11.17	2	S 52° 28'	11.17	3	S 52° 28'	11.17
4	S 52° 28'	11.17	5	S 52° 28'	11.17	6	S 52° 28'	11.17
7	S 52° 28'	11.17	8	S 52° 28'	11.17	9	S 52° 28'	11.17
10	S 52° 28'	11.17	11	S 52° 28'	11.17	12	S 52° 28'	11.17
13	S 52° 28'	11.17	14	S 52° 28'	11.17	15	S 52° 28'	11.17
16	S 52° 28'	11.17	17	S 52° 28'	11.17	18	S 52° 28'	11.17
19	S 52° 28'	11.17	20	S 52° 28'	11.17	21	S 52° 28'	11.17
22	S 52° 28'	11.17	23	S 52° 28'	11.17	24	S 52° 28'	11.17
25	S 52° 28'	11.17	26	S 52° 28'	11.17	27	S 52° 28'	11.17
28	S 52° 28'	11.17	29	S 52° 28'	11.17	30	S 52° 28'	11.17
31	S 52° 28'	11.17	32	S 52° 28'	11.17	33	S 52° 28'	11.17
34	S 52° 28'	11.17	35	S 52° 28'	11.17	36	S 52° 28'	11.17
37	S 52° 28'	11.17	38	S 52° 28'	11.17	39	S 52° 28'	11.17
40	S 52° 28'	11.17	41	S 52° 28'	11.17	42	S 52° 28'	11.17
43	S 52° 28'	11.17	44	S 52° 28'	11.17	45	S 52° 28'	11.17
46	S 52° 28'	11.17	47	S 52° 28'	11.17	48	S 52° 28'	11.17
49	S 52° 28'	11.17	50	S 52° 28'	11.17			

24 - 16 73

Company of S. H. ...

Sheet number 11 Area 1183.5

Area Designated	Ac. When Surveyed	Date of Conveyance	Amount of Survey	When Surveyed	Area for and by the Act of Congress
1	1183.5	1850	1183.5	1850	1183.5
2	1183.5	1850	1183.5	1850	1183.5
3	1183.5	1850	1183.5	1850	1183.5

The above map of Township N14-N, Range N7-E, East of the Principal Meridian, Mich. (see Section 1) is strictly conformable to the field notes of the survey thereon, and the same are on file in the office of the Surveyor General, Michigan, and are open to the inspection of all persons interested.

Surveyor General, Michigan

1850

5416

PLAT OF LONG POINT

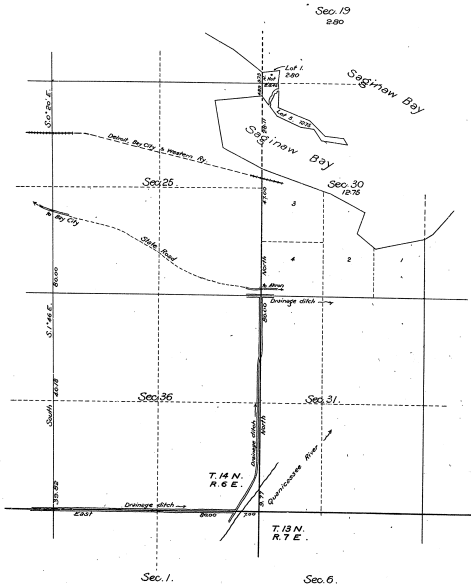
in Saginaw Bay

in Secs. 19 and 30, T. 14 N., R. 7 E., P.M.,

MICHIGAN


Surveyed by F.F. McKinney, U.S. Transitman, June 22-29, 1913,
under special instructions from the Com' G.L.O., dated June 7, 1913.

Scale: 20 fms to an inch.



Department of the Interior,
General Land Office,
Washington, D.C., January 20, 1914.

The above is a correct plat of survey of Long Point in Saginaw Bay,
in Secs. 19 and 30, T. 14 N., R. 7 E., Principal Meridian, Michigan, executed
by F.F. McKinney, U.S. Transitman, in pursuance of special instructions
from the Commissioner of the General Land Office, bearing date June 7,
1913, and is strictly conformable to the field notes of survey thereof
on file in this office, which have been examined and approved.


Commissioner and ex officio
U.S. Surveyor General for Michigan.

24-16

24-16