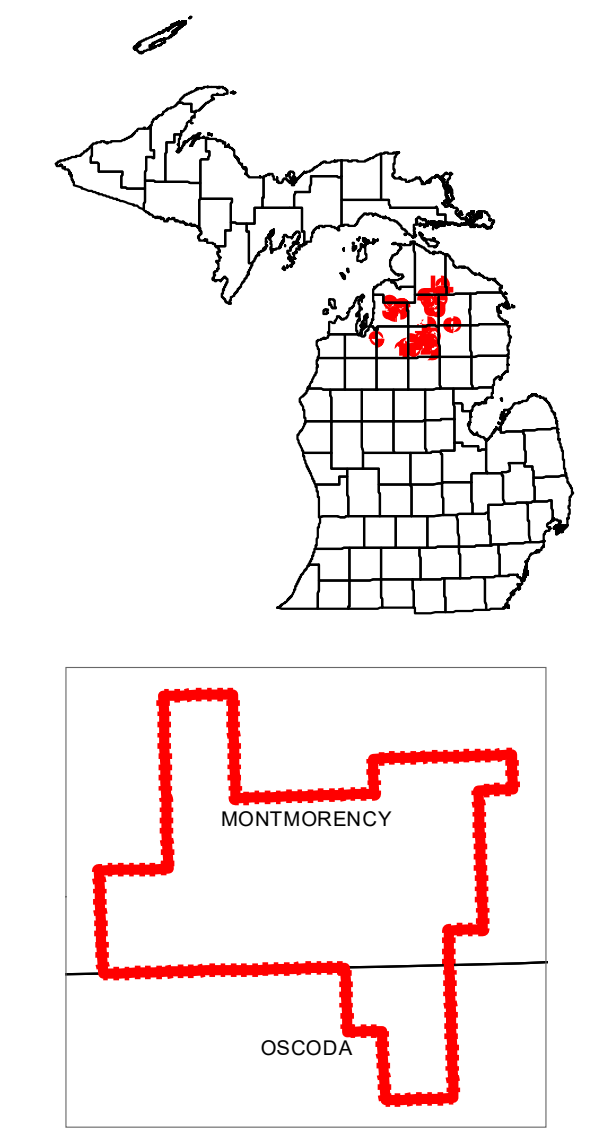
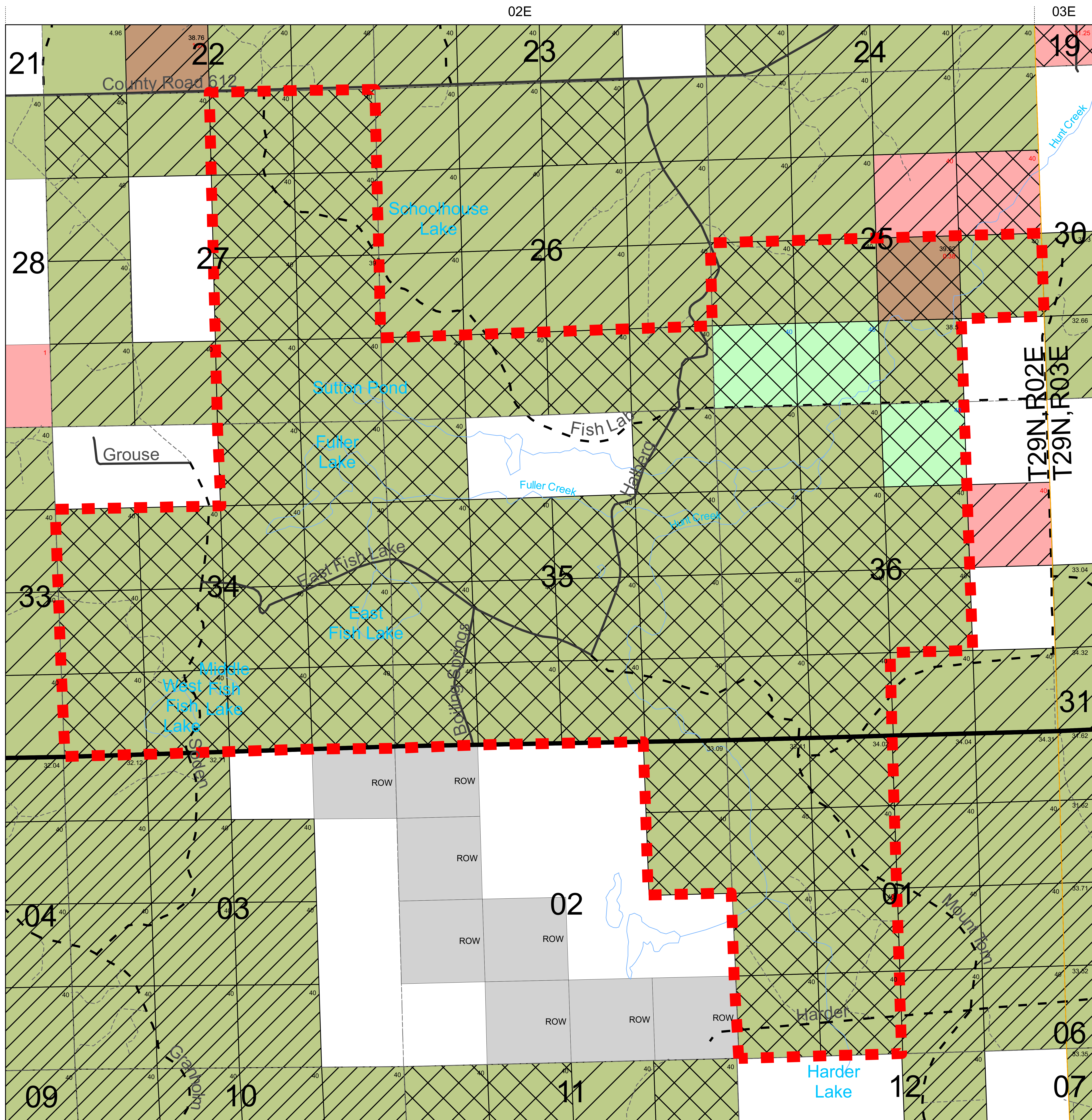


Hunt Creek Management Area



LEGEND

- Hunt Creek Management Area
- Oil and Gas Wells**
 - Oil
 - Natural Gas
 - Gas Condensate
 - Gas Injection
 - Gas Storage
 - Liquified Petroleum Gas Storage
 - Gas Production and Brine Disposal
 - Brine Disposal
 - Dry Hole
 - Water Injection
 - Other Injection
 - Observation
 - Other
 - Permitted Well Location
- Surface Locations**
 - Surface Locations
- Directional Lines**
 - Directional
 - Horizontal (90 deg.)
- Plugged Wells**
 - Plugged Wells
- Well Permit Number**
 - 45123 Permit Number
- Lease Classification Recommendation**
 - Development
 - Development with Restrictions
 - Mixed Classification
 - Non-Development
 - Non-Leasable
- Lease Number**
 - 12345 Development Lease
 - R12345 Development with Restrictions Lease
 - N12345 Non-Development Lease
 - S12345 Gas Storage Lease
 - M12345 Metallic Mineral Lease
 - Z12345 Nonmetallic Mineral Lease
- DNR Ownership**
 - Surface
 - Mineral and Surface
 - Minerals
 - Mixed Ownership
 - Other Rights
- Transportation**
 - Highway
 - Paved
 - Gravel
 - Poor Dirt
 - Railroads
- Political**
 - County Line
 - Townships
 - Sections
- Utility Lines**
 - Pipeline
 - Powerline
- Hydrology**
 - Drains or Intermittent Streams
 - Lakes and Ponds

40.00 Acres of Surface Ownership
 40.00 Acres of Mineral and Surface Ownership
 40.00 Acres of Mineral Ownership

ROW DNR has a Right of Way and/or an acquired easement(s) from private landowner within the quarter-quarter section

MAP INFORMATION

The source for the Military Land Boundaries is the DNR's 1984 Dedicated Boundary File.

Oil and gas well information obtained from drilling records on file at the Michigan Department of Environmental Quality (MDEQ), Geological and Land Management Division. Additional information on oil and gas wells can be obtained by contacting GLMD, MDEQ.

Lease classification recommendations are current and may differ from lease type (i.e., the lease was issued prior to the most current view).

Classification designations on individual parcels are reviewed each time lands are offered for lease. Parcels may be offered for lease under different classifications at future sales.

Mineral Lease and DNR Land Ownership information is derived weekly from the MDNR's Land Ownership Database. Parcel information is compiled to the quarter-quarter section level. Multiple parcels with varying types of ownership within a quarter-quarter section result in the Mixed Ownership Category. Non-ownership rights are classified as Other Rights.

COMPLETENESS and QUALITY
 In general, the data does not reflect platted parcels, Private Claims, and parcels within the City of Detroit and/or Saint Clair County Flats.

The amount of acreage owned within a quarter-quarter section is identified by acreage labels in the upper-right corner of each quarter-quarter section.

The quality and completeness of this data is unknown. It is suggested that this data be combined with a second source, such as plat maps, to further identify ownership.

The information displayed on this map is intended for general purposes only. Specific ownership information should be verified by contacting the MDNR.