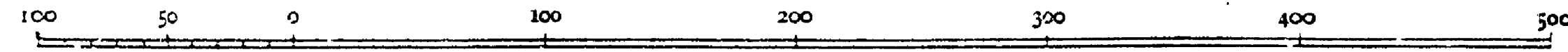


SCALE 80 FEET TO ONE INCH.



STATE OF MICHIGAN SAINT CLAIR FLATS SURVEY

Act of 1899

NORTH CHANNEL

35 Sheets - Sheet No. 26

EDWIN A. WILDEY,

COMMISSIONER OF STATE LAND OFFICE.

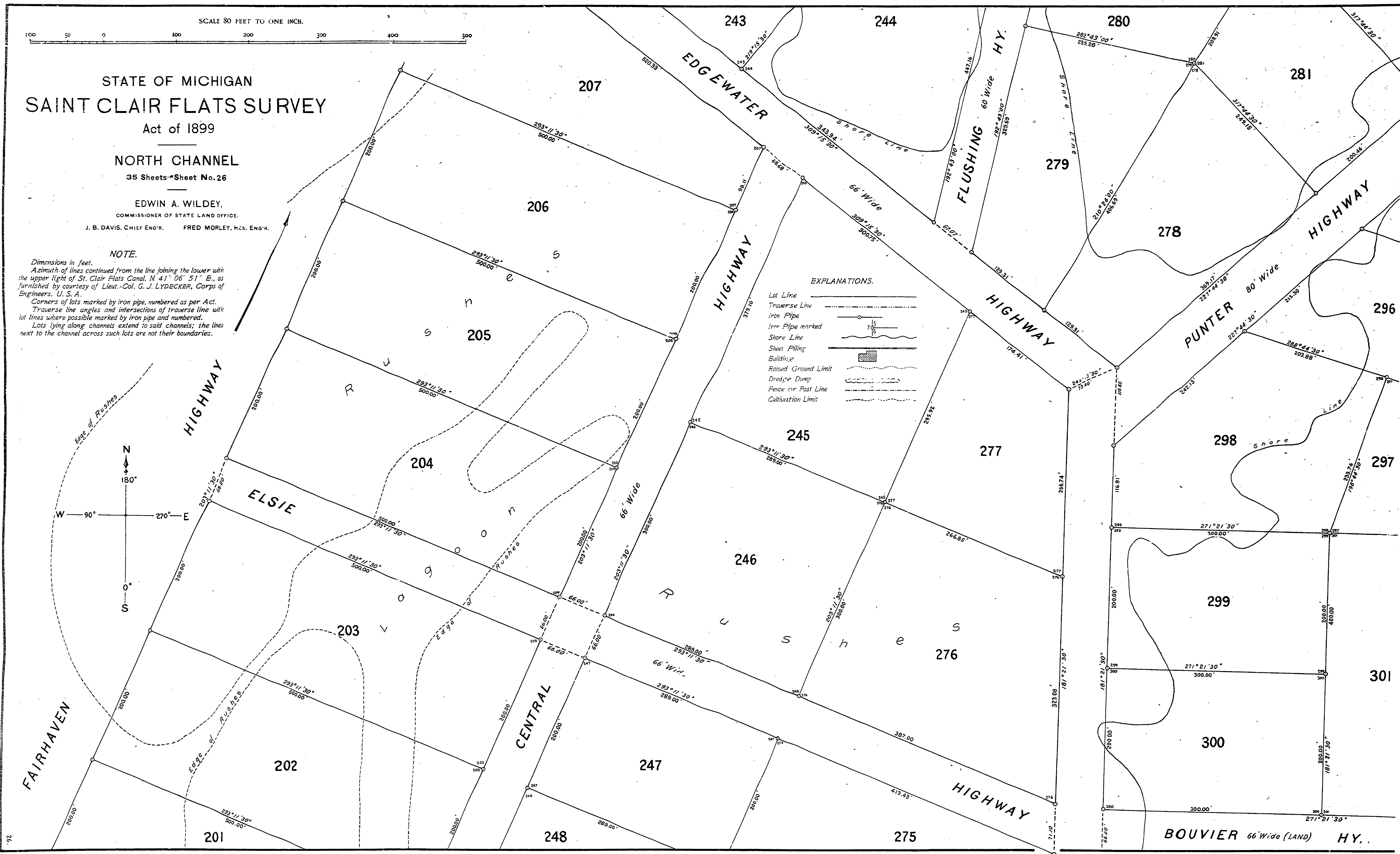
J. B. DAVIS, CHIEF ENGR. FRED MORLEY, HCS. ENGR.

NOTE.

Dimensions in feet.
Azimuth of lines continued from the line joining the lower with the upper light of St. Clair Flats Canal, N 41° 06' 51" E., as furnished by courtesy of Lieut.-Col. G. J. LYDECKER, Corps of Engineers, U. S. A.
Corners of lots marked by iron pipe, numbered as per Act.
Traverse line angles and intersections of traverse line with lot lines where possible marked by iron pipe and numbered.
Lots lying along channels extend to said channels; the lines next to the channel across such lots are not their boundaries.

EXPLANATIONS.

- Lot Line
- Traverse Line
- Iron Pipe
- Iron Pipe marked
- Shore Line
- Sheet Piling
- Building
- Raised Ground Limit
- Dredge Dump
- Fence or Post Line
- Cultivation Limit



R77J

26

