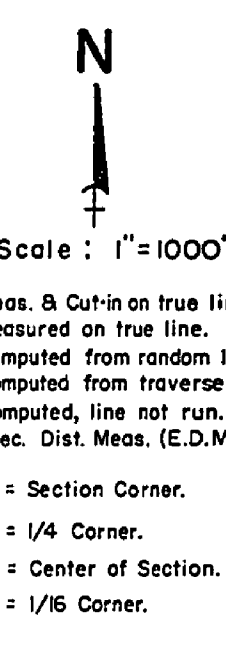
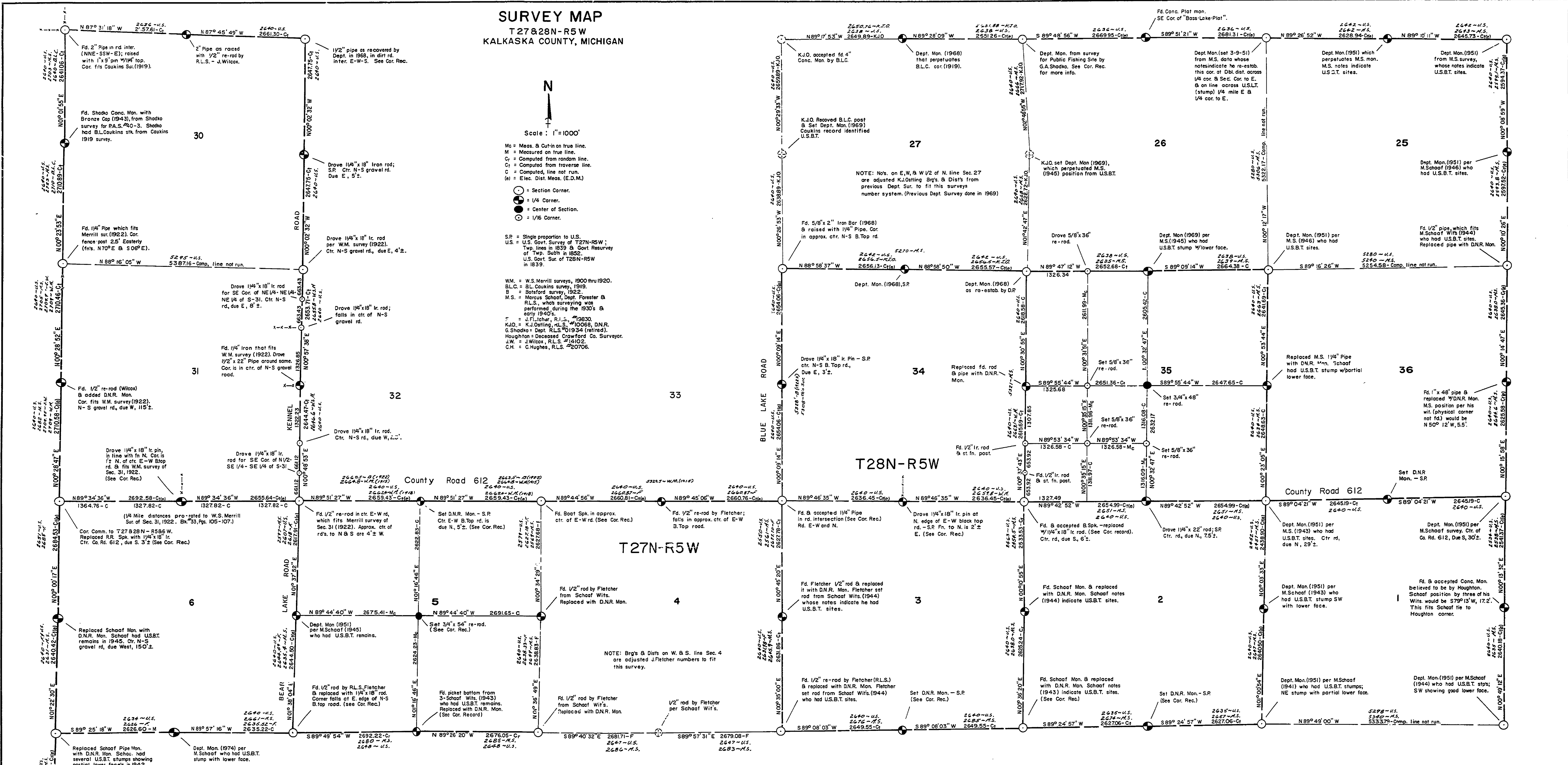


SURVEY MAP
T27828N-R5W
KALKASKA COUNTY, MICHIGAN



NOTE: Nos. on E, W, & W2 of N. line Sec. 27 are adjusted K.J. Oetting Brgs. & Dist's from previous Dept. Sur. to fit this survey's number system. (Previous Dept. Survey done in 1969)

NOTE: Brgs. & Dist's on W. & S. line Sec. 4 are adjusted J. Fletcher numbers to fit this survey.



SURVEY REPORT

PURPOSE: REQUEST BY FORESTRY DIVISION FOR SEC. SUB'N OF SEC. 5 T27N-R5W AND SEC. 35, T28N-R5W, KALKASKA COUNTY, MICHIGAN. QUESTIONS WITH REGARD TO ACCEPTABILITY OF EXISTING CORNERS, IN PARTICULAR THE TWP. LINE COMMON TO T27828N-R5W AS RELATES TO COUNTY ROAD 612, MADE IT NECESSARY TO EXECUTE A RETRACEMENT SURVEY.

PREVIOUS SURVEYS OF RECORD: (THAT COULD BE LOCATED BY OUR RESEARCH.) PREVIOUS SURVEYS ARE AS NOTED IN THE LEGEND ON ADJOINING "SURVEY MAP" WITH COMPLETE DATA ON THESE PRIOR SURVEYS LOCATED IN OUR SURVEY FILE.

CONTROLLING CORNERS: DESCRIPTION OF CORNERS ARE AS NOTED ON ADJOINING "SURVEY MAP" WITH COMPLETE CORNER DESCRIPTION, HISTORY AND WITNESSES ON "LAND CORNER REGISTRATION CERTIFICATES" AS FILED WITH THE KALKASKA COUNTY REGISTER OF DEEDS PER ACT 74, P.A., 1970, AND APPROPRIATE DEPARTMENT OFFICES.

SURVEY NOTES: ALL BEARINGS ARE BASED ON TRUE MERIDIAN PER MEAN OF FOUR SEPARATE SETS OF SOLAR OBSERVATIONS. SAID OBSERVATIONS BEING TAKEN AT A TRAVERSE POINT N51°06'19"W, 70.47 FEET FROM SECTION CORNER COMMON TO SECTIONS 1&2, T27N-R5W AND SECTIONS 35&36, T28N-R5W.

BASIC PRIMARY TRAVERSE WAS AN OPEN TRAVERSE EAST AND WEST ALONG COUNTY ROAD 612, UTILIZING MILD T-1 THEODOLITE AND H.P. 3805-A (E.D.M.) WITH SEVERAL SECONDARY TRAVERSES TO THE NORTH AND THE SOUTH CLOSING ON, AND ADJUSTING TO THE PRIMARY TRAVERSE.

DECEASED DEPT. FORESTER & R.L.S., MARCUS SCHAUF, DID CONSIDERABLE SURVEY WORK IN T27828N-R5W DURING THE LATE 1930'S & EARLY 1940'S. HIS WORK AND MONUMENTATION ALONG THE NORTH LINE OF SECS. 3, 4, 5, & 6, T27N-R5W, WHICH FELL SOMEWHAT SOUTH OF COUNTY ROAD 612, WAS NOT ACCEPTED; HIS CORNERS THAT WE WERE ABLE TO RECOVER BEING NOTED ON THE LAND CORNER RECORDS. THE REASONS FOR NOT ACCEPTING ABOVE NOTED SCHAUF CORNERS IS THAT COUNTY ROAD 612 WAS IN EXISTENCE MANY YEARS PRIOR TO SCHAUF'S SURVEY. PREVIOUS SURVEYS AND MONUMENTATION ALONG CO. ROAD 612 BY MERRILL AND BOTSFORD WERE RECOVERED & ACCEPTED BY OUR SURVEY; AND RECOVERED CORNERS SEVERAL MILES NORTH OF CO. RD. 612 FIT 1839 GOVT. DISTANCES REASONABLY WELL.

ALL MEASUREMENTS ARE IN FEET AND DECIMALS THEREOF.

UNLESS OTHERWISE NOTED, D.N.R. MONUMENTS CONSIST OF A FOUR INCH ALUMINUM CAP ON A ONE INCH DIAMETER GALVANIZED IRON PIPE.

CERTIFICATION: I, HEREBY, CERTIFY THAT THE MAP DELINEATED HEREON IS A TRUE REPRESENTATION OF THE FINDINGS OF THIS SURVEY, AND THAT THE MONUMENTS FOUND OR ESTABLISHED AND MEASUREMENTS MADE ARE AS SHOWN THEREON.



Carl F. Roser
CARL F. ROSER, R.L.S., #12228

PLAN No. R-40-J

MICHIGAN DEPARTMENT OF NATURAL RESOURCES ENGINEERING REGION II	
PROJECT T27N-R5W, Secs. 1 thru 6 & part of 7	Proj. 76-29
T28N-R5W, Secs. 25, 26, 27, 30, 31, 34, 35 & 36	Proj. 75-46
LOCATION KALKASKA COUNTY, MICHIGAN	
DIVISION FORESTRY	PROJECT NO.
SURVEY BY C.F. Roser	DATE 4-19-78
DRAWN BY R.O.H.	DATE March 1978
FIELD BY FCWagenschutz & Crew Interim Feb '78 thru Dec '77	