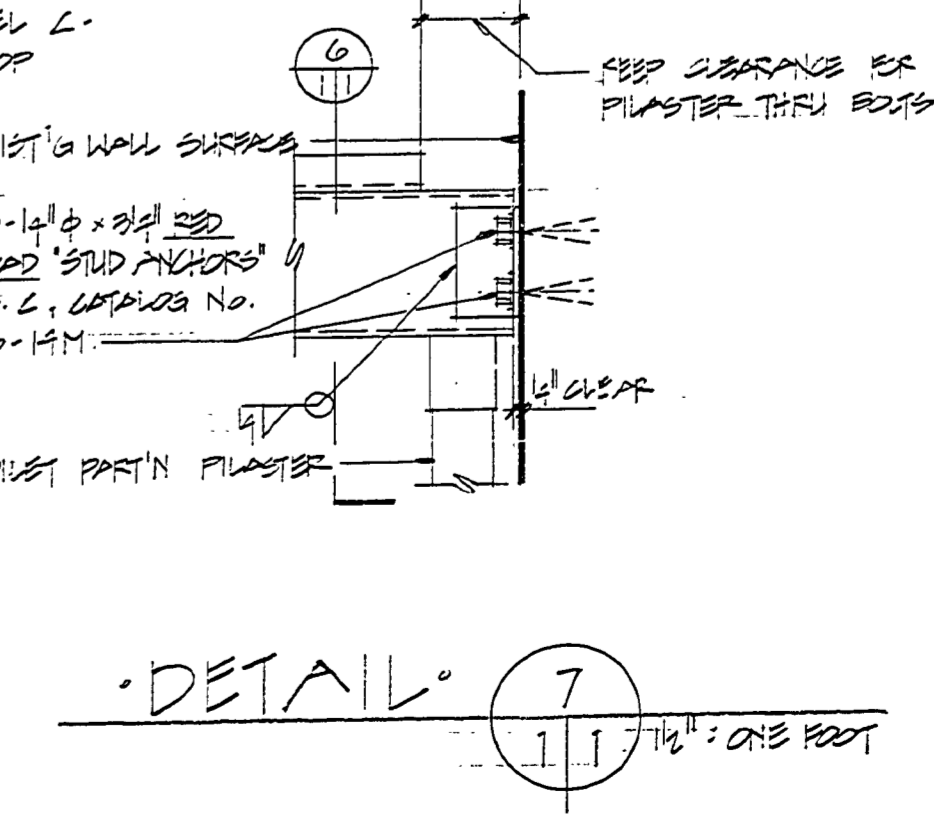
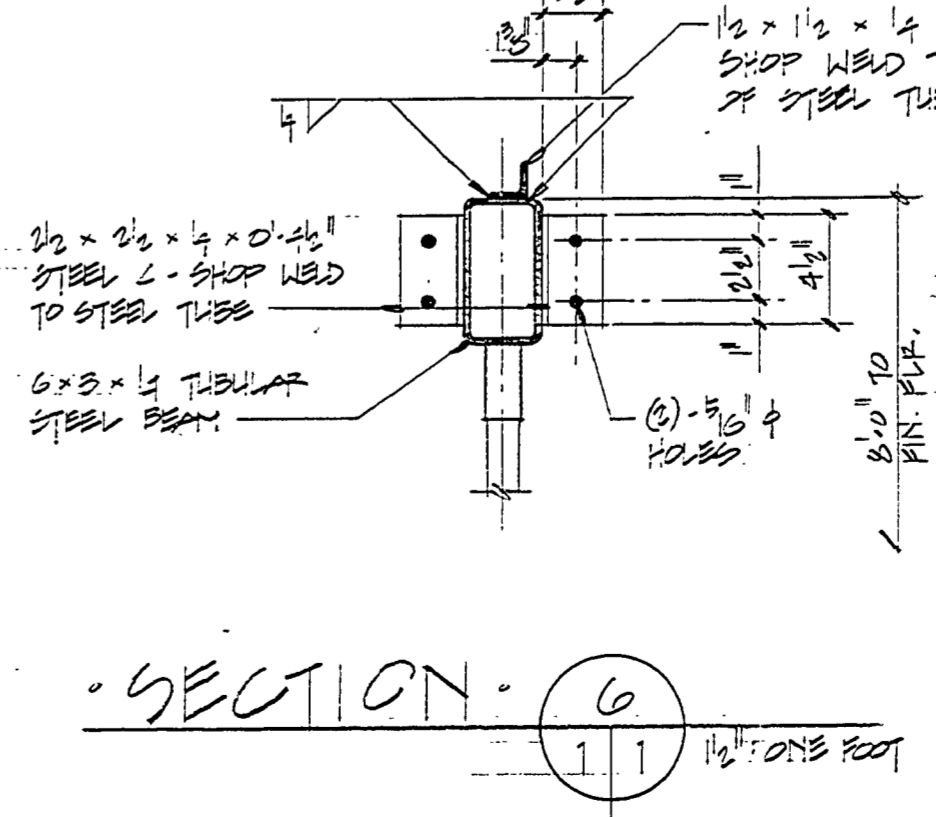
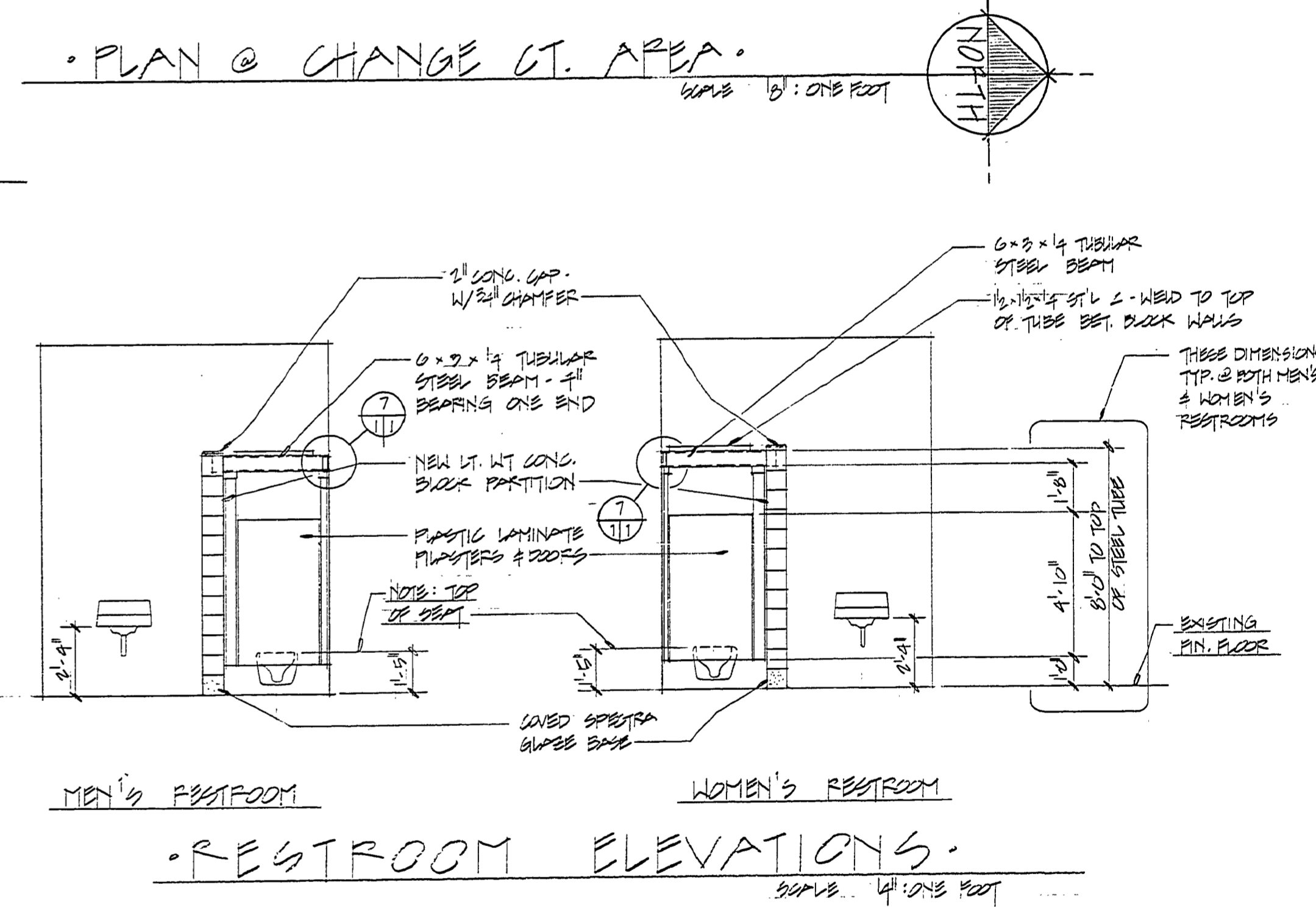
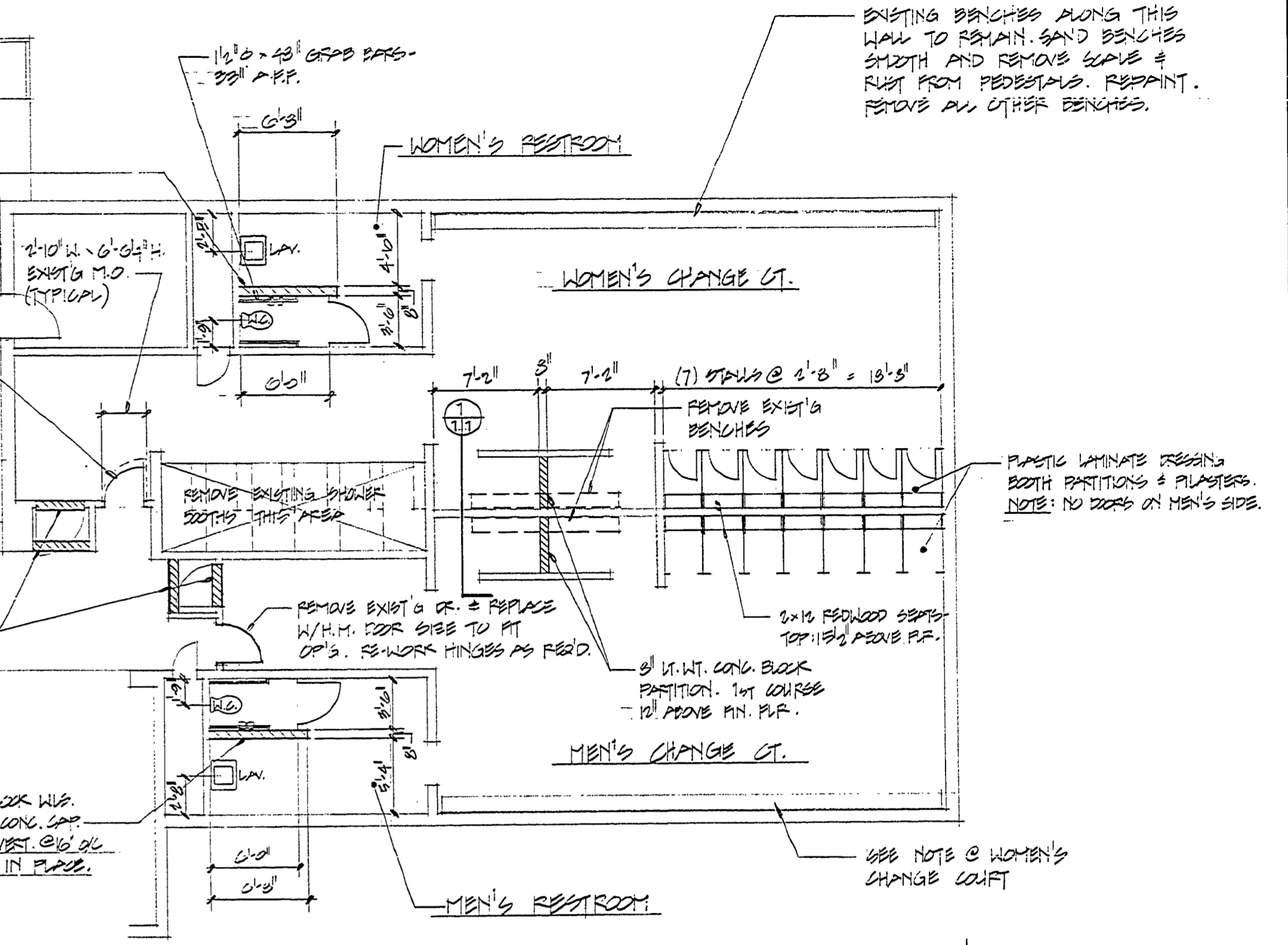
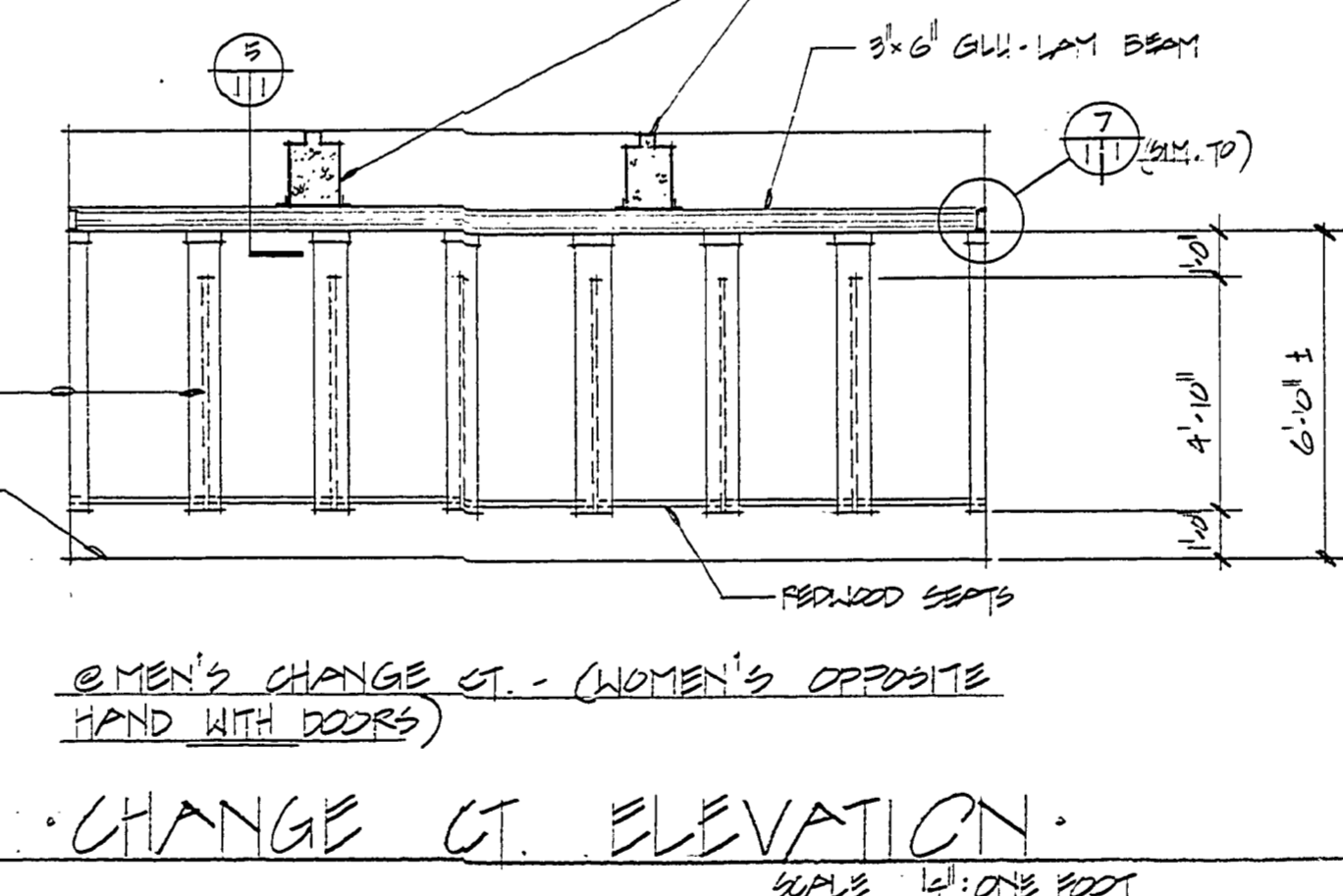
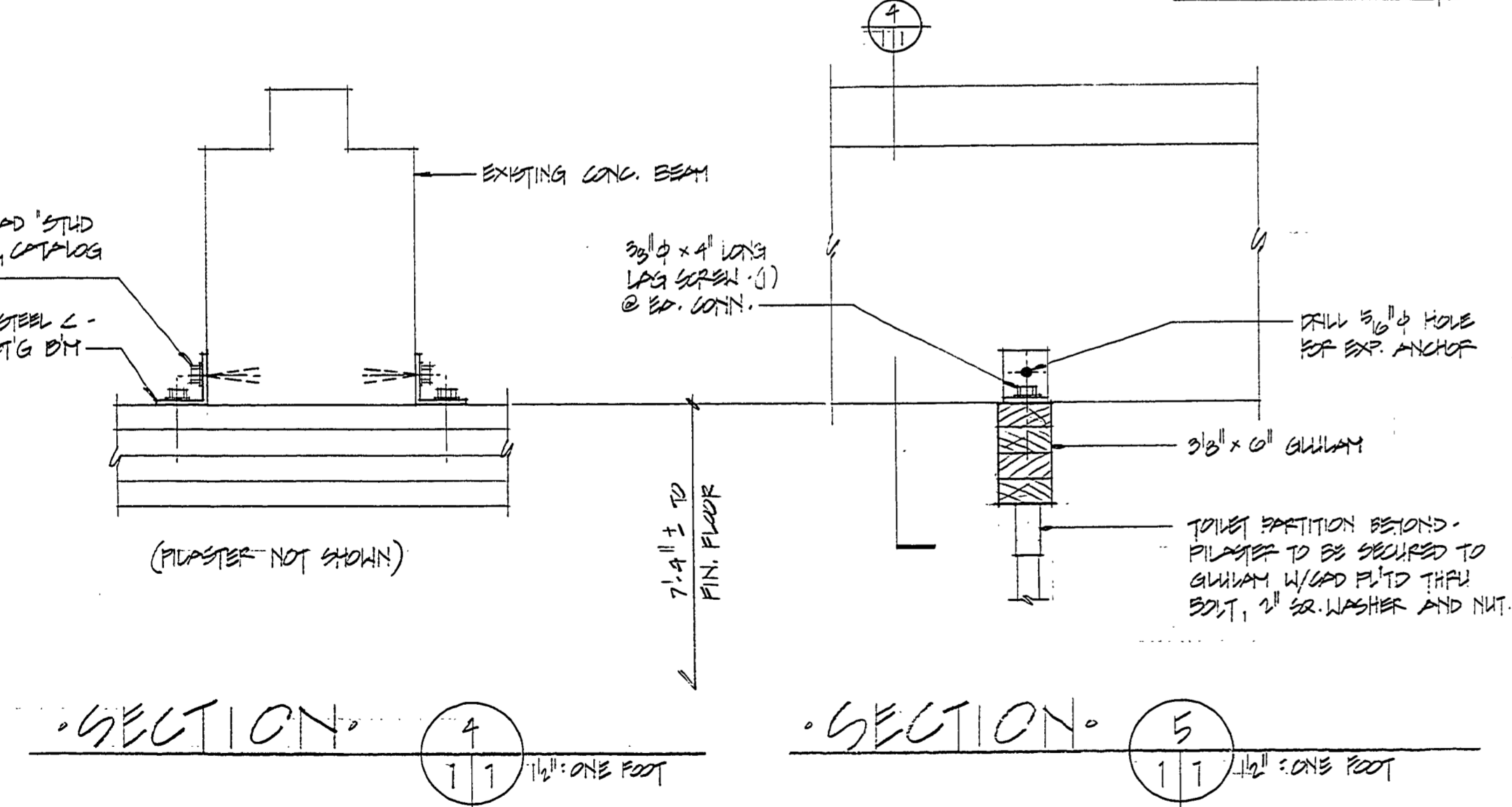
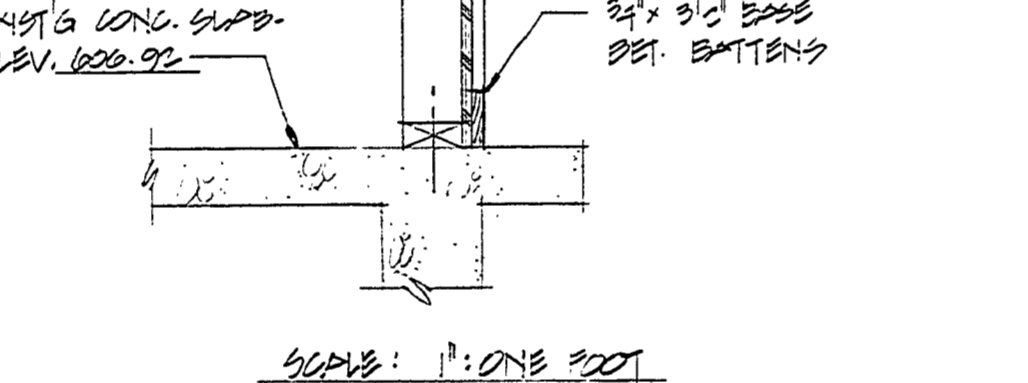
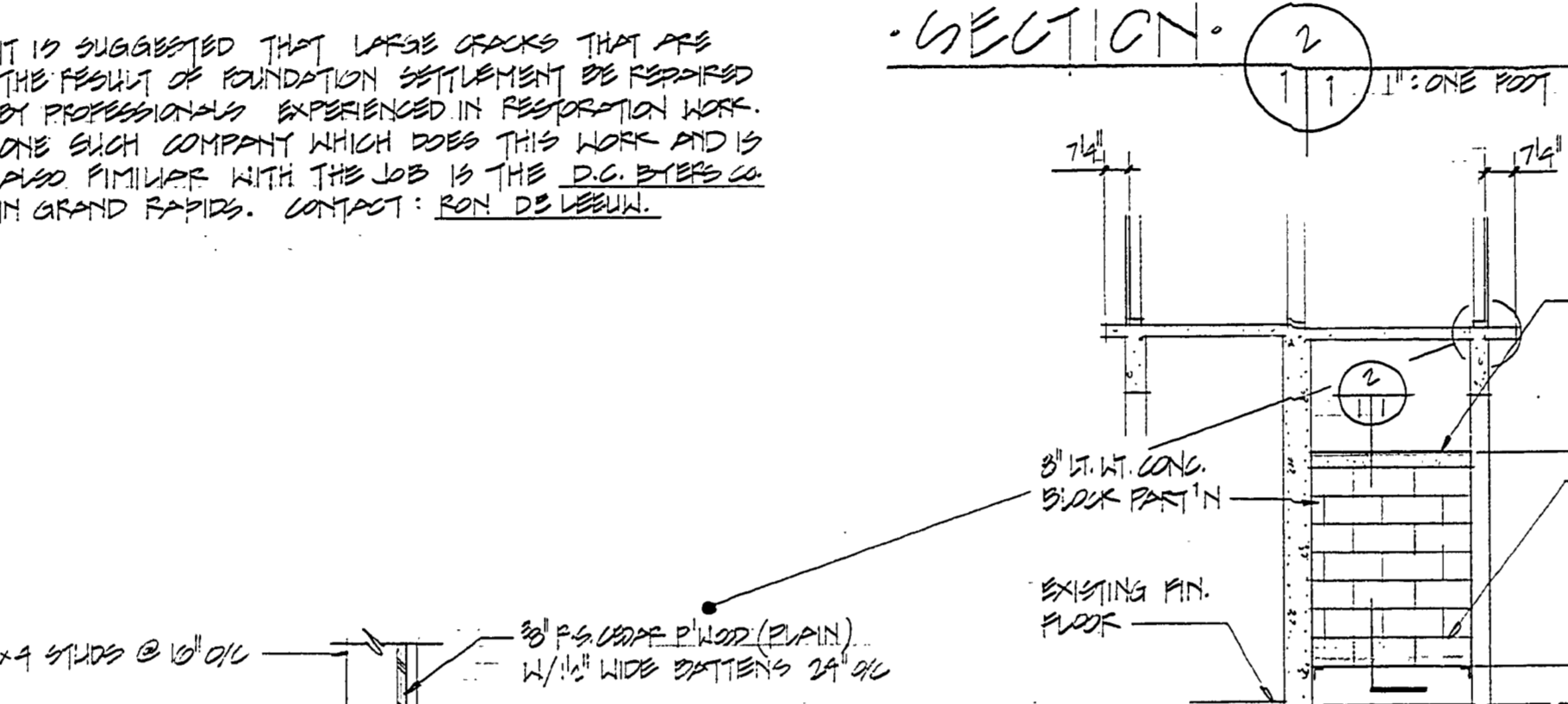
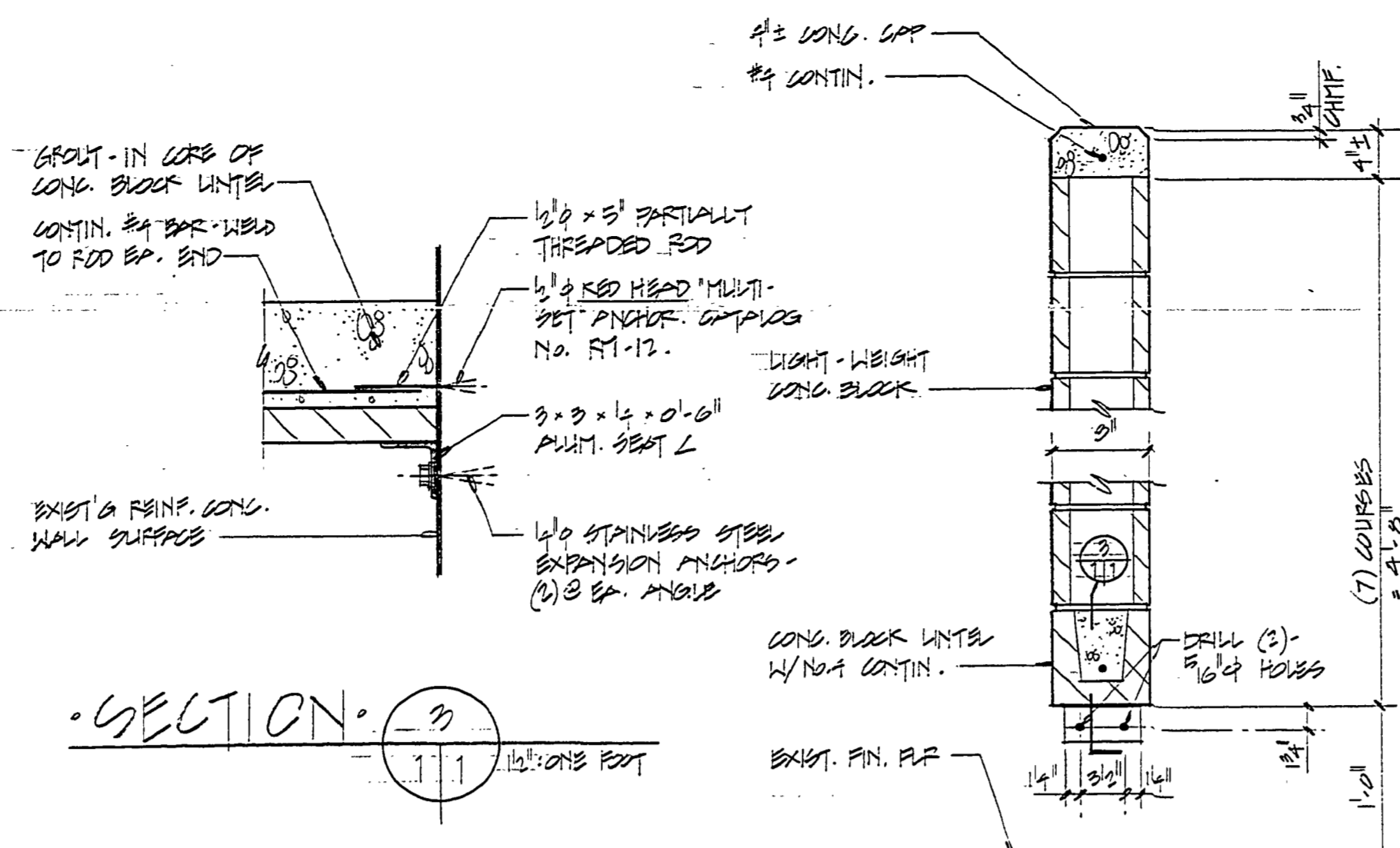


CONSTRUCTION NOTES/OUTLINE SPECIFICATIONS

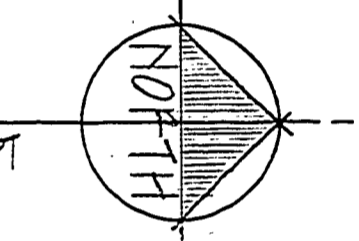
- Concrete Masonry Units - all blocks shall be of lightweight aggregate, conforming to ASTM Designation C-90. Mortar shall be type N or S.
- Glazed Masonry Base - shall be Spectra - Glaze Masonry Units. Color: Deep Frost Gray
- Miscellaneous Metal -
 - Rolled steel shapes shall comply with ASTM A36.
 - Cold-formed steel tubing shall comply with ASTM A500, Grade B.
 - Aluminum shapes shall be of aluminum alloy 6061 - T6.
 - All welding shall be done in accordance with accepted practice.
- Glue-Laminated Beam - shall be architectural appearance grade, Southern Yellow Pine or Douglas Fir. Minimum fiber stress in bending (fb) of 2200 psi.
- Hollow Metal Doors and Frames - Frames to be 16 ga. pressed steel. Doors to be full-flush 20 ga. pressed steel. Secure frames to existing opening with masonry anchors.
- Painting - General
 - Surfaces to be painted shall be cleaned with a power washing machine capable of 2,000 to 3,000 psi. All paint scale, etc. not removed by power washing shall be scraped to ensure a smooth wall surface.
 - Mildew, efflorescence, and all foreign material shall be removed from surfaces by appropriate methods.
 - Fill all holes and cracks with approved patching material.
 - Etch smooth and surface-hardened concrete before applying paint.
- Painting - Schedule
 - For purpose of identifying type and quality of paint materials to be used for this project, products as manufactured by Pratt and Lambert are specified.
 - All new and existing concrete surfaces - one (1) coat of Latex Primer and one (1) coat of Pro-Hide Alkyd Semi-Gloss. Color: #Y395P, "Gossamer".
 - All new concrete block surfaces - one (1) coat of Primafil 200, and one (1) coat of Cellu-Tone. Color: Y395P, "Gossamer".
 - All steel shapes, doors and frames (not aluminum) - one (1) coat of Interior Trim Primer, and one (1) coat of Pro-Hide Alkyd Semi-Gloss. Color: #Y395 P, "Gossamer".
 - Glue-lam beam - stain to match existing glu-lam beams. *ORIG. SPEC. CALLED FOR (2) COATS OF INTERIOR PRIMER STAIN TO MATCH EXISTING FINISH.* *OR OUTDOOR STAIN PRD.*
- Change Court and Toilet Partitions - shall be "Sanylastic" plastic laminate partitions, pilasters and doors as manufactured by Sanymetal Corporation. Slide latch, no. 7431. Color: No. 063, "Dove".



IT IS SUGGESTED THAT LARGE CRACKS THAT ARE THE RESULT OF FOUNDATION SETTLEMENT BE REPAIRED BY PROFESSIONALS EXPERIENCED IN RESTORATION WORK. ONE SUCH COMPANY WHICH DOES THIS WORK AND IS ALSO FAMILIAR WITH THE JOB IS THE D.C. BERTS CO. IN GRAND RAPIDS. CONTACT: RON DE LEEUW.

EXISTING BRANCHES ALONG THIS WALL TO REMAIN. SAND BRUSHES SMOOTH AND REMOVE SCALE & RUST FROM PEDESTALS. REPAINT. REMOVE ALL OTHER BRANCHES.

PLASTIC LAMINATE PARTITIONS & PILASTERS. NOTE: NO DOORS ON MEN'S SIDE.



BUILDING COMMITTEE APPROVAL	
BY:	DATE:
RECOMMENDED <i>Daniel J. Palko</i>	DATE
FOR APPROVAL <i>Daniel J. Palko</i>	ENGINEERING OR ARCHITECTURAL SUPERVISOR DATE
RECOMMENDED <i>John N. Nelson</i>	DATE
FOR APPROVAL <i>John N. Nelson</i>	PROJECT AND PLAN COORDINATOR DATE
DIVISION / REGION APPROVAL	
BY: <i>Jack B. K... Field</i>	DATE: 7-8-89
DIVISION CHIEF / REGIONAL MANAGER	
ENGINEERING DIVISION	
APPROVED: <i>Paul J. G... 7-8-89</i>	DATE
MUSKOGEE STATE PARK	
PROJECT NO. <i>24-1589</i>	DATE
SHEET <i>1</i> OF <i>3</i>	PLAN NO. <i>A-117</i>

SURVEYED BY	DRAWN BY	CHECKED BY	DATE	NO.	DATE	BY	REVISIONS	NO.	DATE	BY	REVISIONS
				1.				3.			
				2.				4.			

MICHIGAN DEPARTMENT OF NATURAL RESOURCES	PLAN, DETAILS, & SECTIONS	MUSKOGEE STATE PARK
		AREA OR PARK
		PROJECT