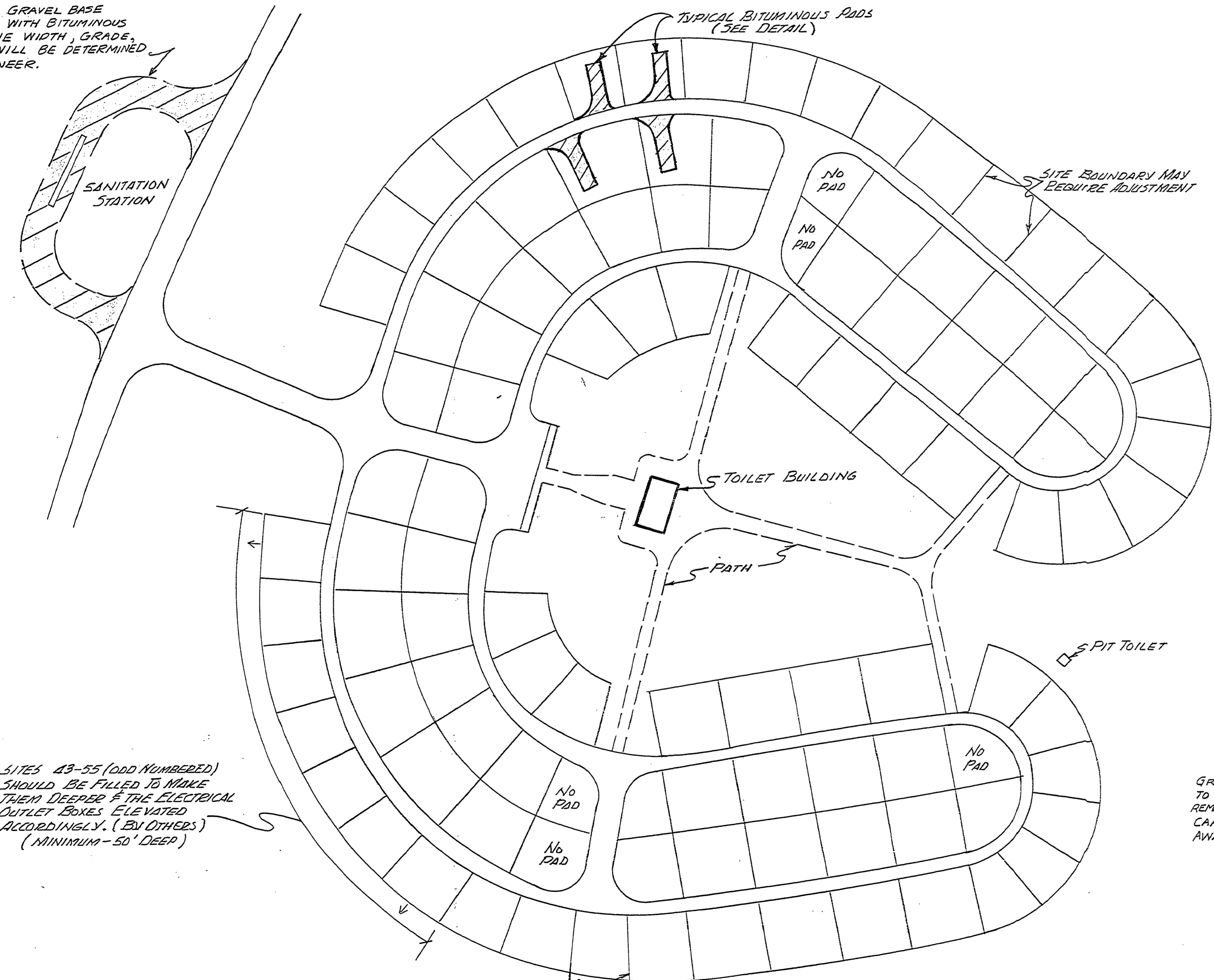


# MUSKEGON STATE PARK

## BITUMINOUS SURFACING

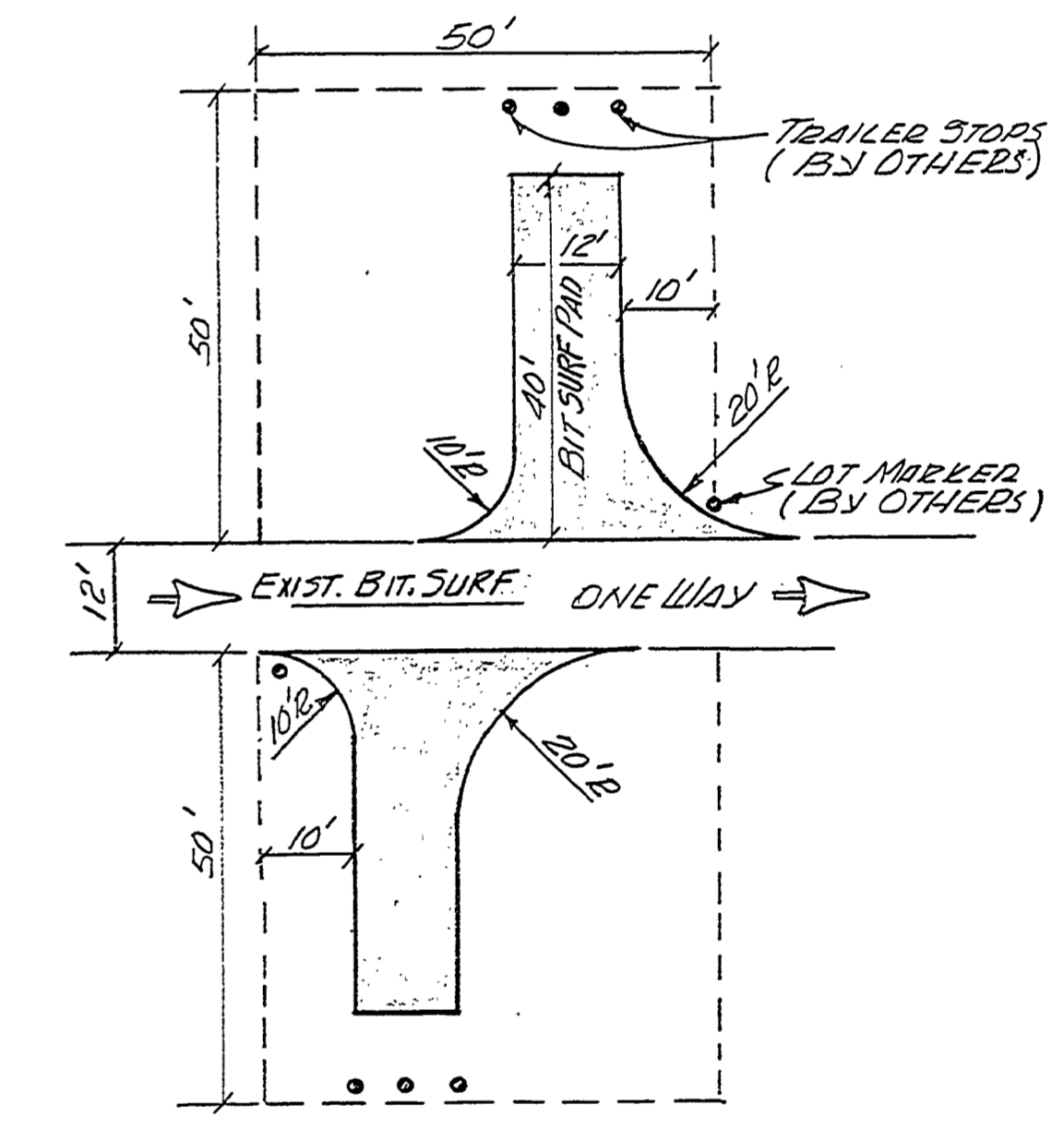
### PROJECT No. 24-2397

SHAPE EXIST. GRAVEL BASE AND SURFACE WITH BITUMINOUS MATERIAL. THE WIDTH, GRADE, AND RADII WILL BE DETERMINED BY THE ENGINEER.



SITES 43-55 (ODD NUMBERED) SHOULD BE FILLED TO MAKE THEM DEEPER & THE ELECTRICAL OUTLET BOXES ELEVATED ACCORDINGLY. (BY OTHERS) (MINIMUM - 50' DEEP)

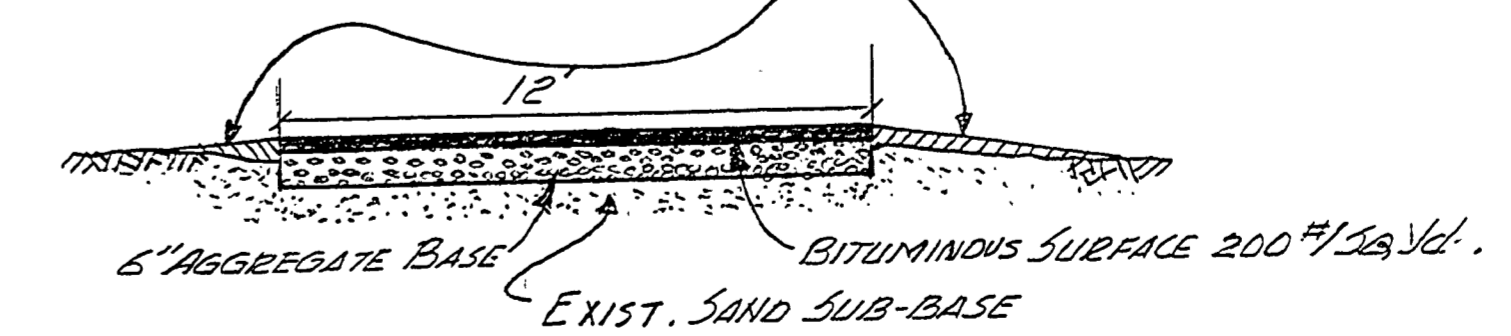
PLAN  
Scale: 1"=50'



CAMPSITE DETAIL  
Scale: 1"=20'

NOTE:  
THIS TYPICAL CAMPSITE MAY HAVE TO BE ADJUSTED SLIGHTLY TO FIT UNUSUAL SITE CONDITIONS.

GRADE BERM MATERIAL AFTER PAVING TO MEET EDGES OF BIT. PAD. SPREAD REMAINING EXCAVATED MATERIAL OVER CAMPSITE. PROVIDE POSITIVE DRAINAGE AWAY FROM PAD.



TYPICAL SECTION OF CAMP PAD  
NO SCALE

BUILDING COMMITTEE APPROVAL	
BY: _____	DATE: _____
RECOMMENDED FOR APPROVAL: _____ 11/1/83	
ENGINEERING OR ARCHITECTURAL SUPERVISOR DATE	
RECOMMENDED FOR APPROVAL: _____	
PROGRAM AND PLAN COORDINATOR DATE	
DIVISION/REGION APPROVAL	
BY: _____ 11/19/83	DATE
DIVISION CHIEF/REGIONAL MANAGER	
ENGINEERING DIVISION	
APPROVED: _____ 1-11-83	DATE
FOR CHIEF ENGINEER	

SURVEYED BY	DRAWN BY J. Lemmon	1-83	NO.	DATE	BY	REVISIONS	NO.	DATE	BY	REVISIONS	MICHIGAN DEPARTMENT OF NATURAL RESOURCES	MUSKEGON STATE PARK AREA OR PARK	PROJECT NO. 24-2397	SHEET 1 OF 1	PLAN NO. E-123
DESIGNED BY	CHECKED BY	DATE	1.				3.				PLAN & DETAILS SHEET TITLE	BLACKTOP PADS & EXTENSIONS PROJECT			
			2.				4.								