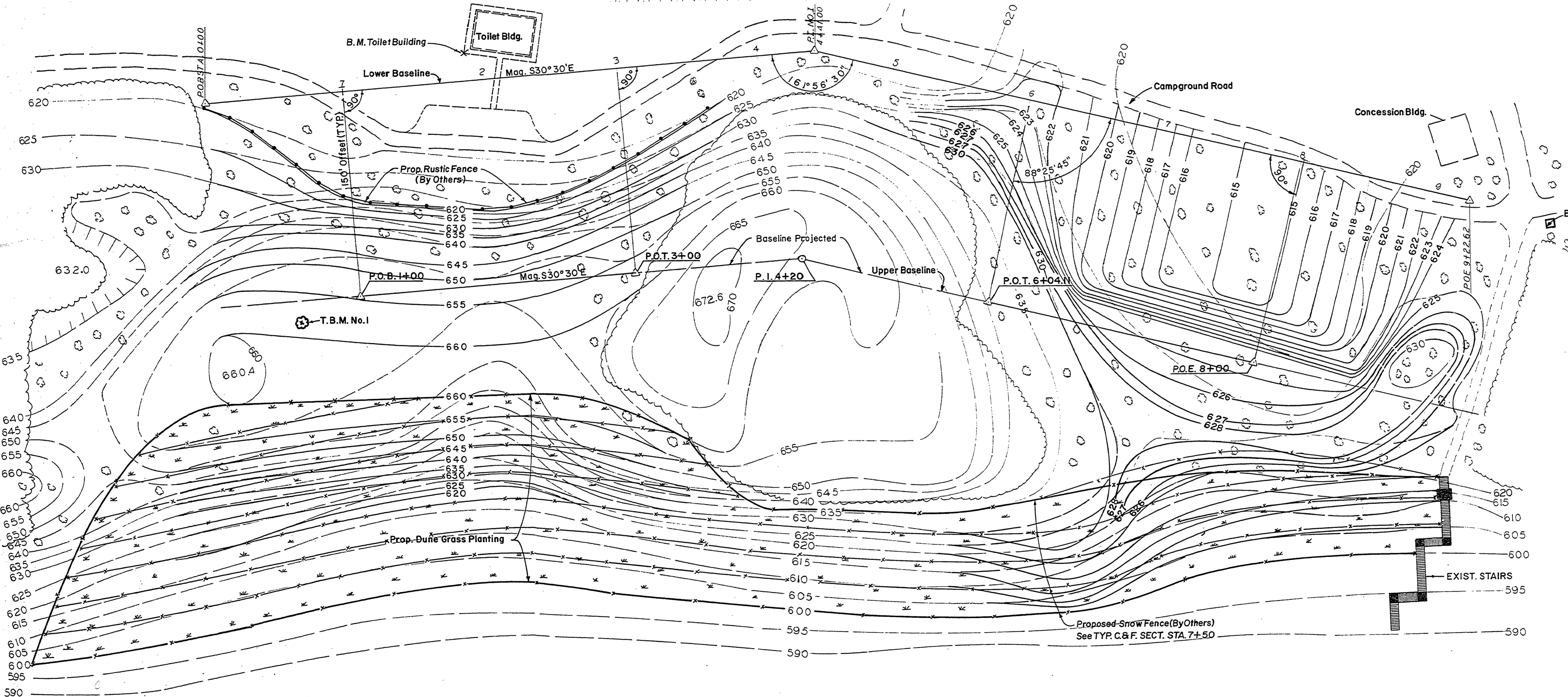
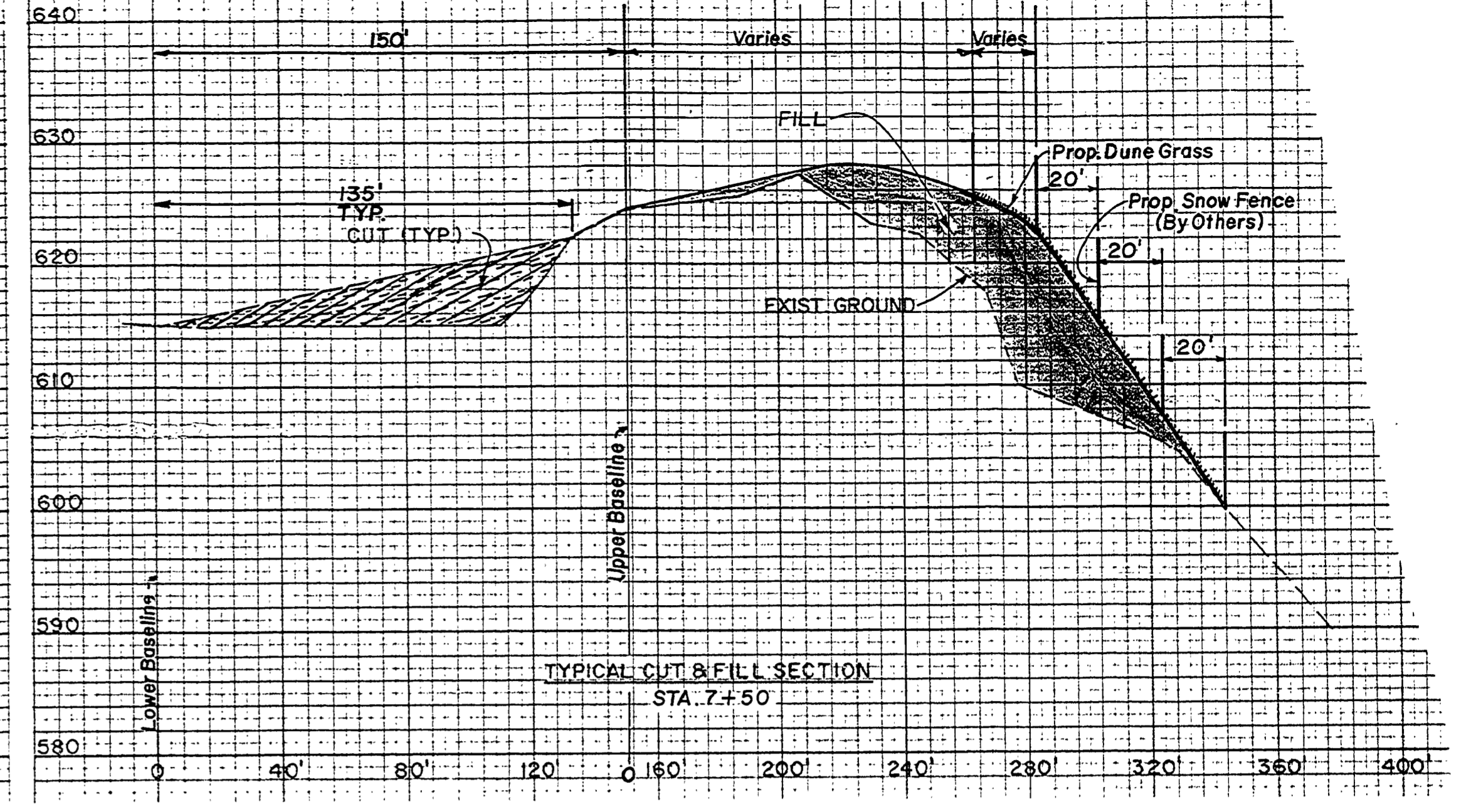
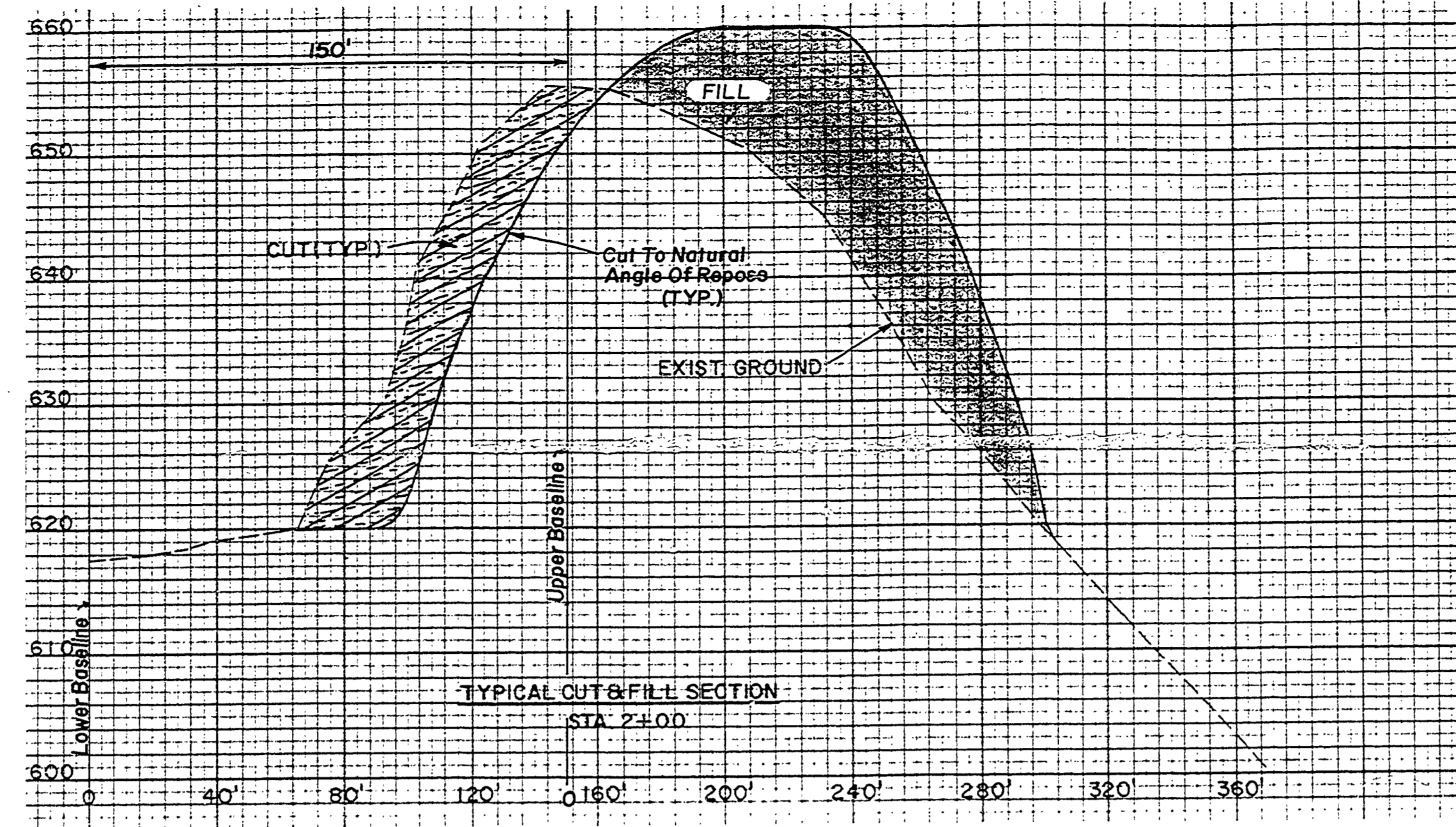


WITNESSES
 P.O.B. Lower Baseline Sta. 0+00.00 3/4" Iron Pipe
 S29°W, 42.71' Pk Nail In N.W. Side 20" Oak.
 S39°E, 38.53' Pk Nail In W. Side 24" Oak.
 N25°E, 14.01' Pk Nail In S.E. Side 12" Oak.
 P.I. No. 1 Sta. 4+41.00 3/4" Iron Pipe
 S50°E, 3.11' Pk Nail & Ref. Tag In W. Side 13" Oak
 S33°W, 11.78' Pk Nail & Ref. Tag In N. Side 20" Beech.
 N18°W, 19.11' Pk Nail & Ref. Tag In W. Side 18" Oak
 P.O.E. Lower Baseline Sta. 9+22.62 3/4" Iron Pipe
 N0°N, 2.90' Pk Nail & Ref. Tag In W. Side 7" Beech
 S0°S, 1.96' Pk Nail In E. Side Gate Post 5'E. C.G. Road.
 S61°E, 18.92' Pk Nail & Ref. Tag In N. Side 12" Cherry
 P.O.B. Upper Baseline 150' Rt. Of L.B. Sta. 1+00.00
 3/4" Iron Pipe Sta. 1+00.00
 N23°E, Spike & Tag In 16" Oak 30.85'
 N32°W, 59.53', 16" Oak, TBM No. 1
 N80°W, 14.73' Spike In 11" Oak
 S32°E, 20.13' Spike In 12" W. Pine
 P.O.T. Upper Baseline Sta. 3+00.00 3/4" Iron Pipe
 N18°W, 22.30' Spike & Tag In 16" Oak
 N61°E, 21.84' Spike & Tag In 13" Oak
 S22°E, 12.48' Spike & Tag In 14" Beech

BENCHMARKS
 B.M. No. 4 Elev. 622.96
 Spike & Tag In S. Root, 16" Oak, 33' N. OF FENNER ROAD
 Centerline At N.E. Corner State Park Property, Near N.E.
 Corner Sec. 17
 B.M. Toilet Bldg Elev. 617.04
 A Chiseled Square On N.W. Corner Of Toilet Building
 Sidewalk At N. Campground.
 T.B.M. No. 1 Elev. 660.27
 A Pk Nail & Tag In W. Side Of 14" Oak, Top Of Dune Aprox.
 165' Rt. Of Lower Baseline Sta. 0+54.
 B.M. Fountain Elev. 624.79
 A Chiseled Square On N.W. Corner Of Conc. Base Of D.F.
 At W. End C.G. Road Aprox. 75' W. Of Concession Bldg.
 NOTE: Upper Baseline Was Extended Forward From Sta. 3+00
 To Sta. 8+00 By Temporary Alignment Points. No Witnesses
 For These Points.



LEGEND

- Existing Contours
- - - Proposed Contours
- x x x Proposed Snow Fence
- o o o Scattered Trees
- o o o Dense Woods
- - - Proposed Dune Grass
- - - Lake Shoreline
- - - Proposed Rustic Fence

- CONSTRUCTION NOTES**
1. REMOVAL OF SAND AROUND ALL LIVE TREES SHALL BE DONE IN SUCH A MANNER AS NOT TO DAMAGE THEM.
 2. STANDING DEAD TREES MAY BE REMOVED FROM THE SITE AS DIRECTED BY THE ENGINEER.
 3. ALL STUMPS, LOGS OR FALLEN TREES ENCOUNTERED BELOW PROPOSED SAND REMOVAL GRADES SHALL BE REMOVED AND DISPOSED OF AS DESCRIBED IN THE PROJECT SPECIFICATIONS OR AS DIRECTED BY THE ENGINEER.
 4. REMOVAL OF SAND, STA. 5+50 TO STA. 9+22 SHALL BE FLUSH WITH EDGE OF CAMPGROUND ROAD.
 5. PLANTING OF DUNE GRASS WILL BE DONE IN ACCORDANCE WITH THE PROJECT SPECIFICATIONS OR AS DIRECTED BY THE ENGINEER.
 6. IT IS THE INTENT OF THIS PROJECT TO RESTORE PORTIONS OF EXISTING SAND DUNES TO THEIR FORMER CONDITION WITHOUT DESTROYING EXISTING TREES AND VEGETATION. THIS WILL PRECLUDE THE USE OF TRACKED OR WHEELED VEHICLES IN CERTAIN AREAS AND IT WILL BE NECESSARY TO MOVE THE SAND WITH BELT CONVEYORS OR SOME OTHER MEANS.

LAKE MICHIGAN
 W.S. JULY 1978
 580.29

E-120

SURVEYED BY McCann - Smith	7-78	DRAWN BY L. Smith	10-78	NO. 1	DATE	BY	REVISIONS	NO. 3	DATE	BY	REVISIONS	MICHIGAN DEPARTMENT OF NATURAL RESOURCES	SITE PLAN SHEET TITLE	MUSKEGON STATE PARK, N. CAMPGROUND AREA OR PARK DUNE SAND REMOVAL & STABILIZATION PROJECT	PROJECT NO. 24 1996	SHEET 2 OF 2	PLAN NO. E
DESIGNED BY L. Smith	10-78	CHECKED BY		2.	DATE			4.	DATE								