

BM SITE ELEV. 623.96
 PK NAIL IN 15' CEDAR

RP#1-PK NAIL RP#2-PK NAIL RP#3-60d NAIL
 N 5000.00 N 5000.00 N 5005.49
 E 5000.00 E 5074.63 E 4736.25

SCALE:	1" = 20'
PROJ. NO.:	95-157
DATE:	12/95
REVISIONS	
890	

CAPITAL CONSULTANTS
 ENGINEERS

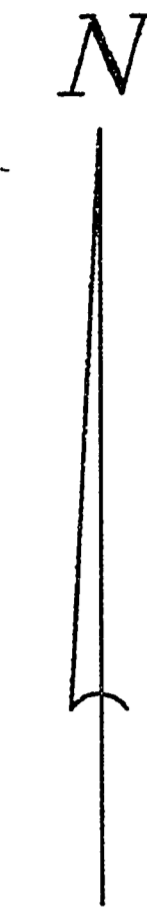
STATE OF MICHIGAN
 DEPARTMENT OF MANAGEMENT AND BUDGET
Office of Facilities

ISSUED FOR	DATE
PRELIMINARY	8-30-95
CONSTRUCTION	9-16-95
CONSTRUCTION	12-21-95
FINAL RECORD	

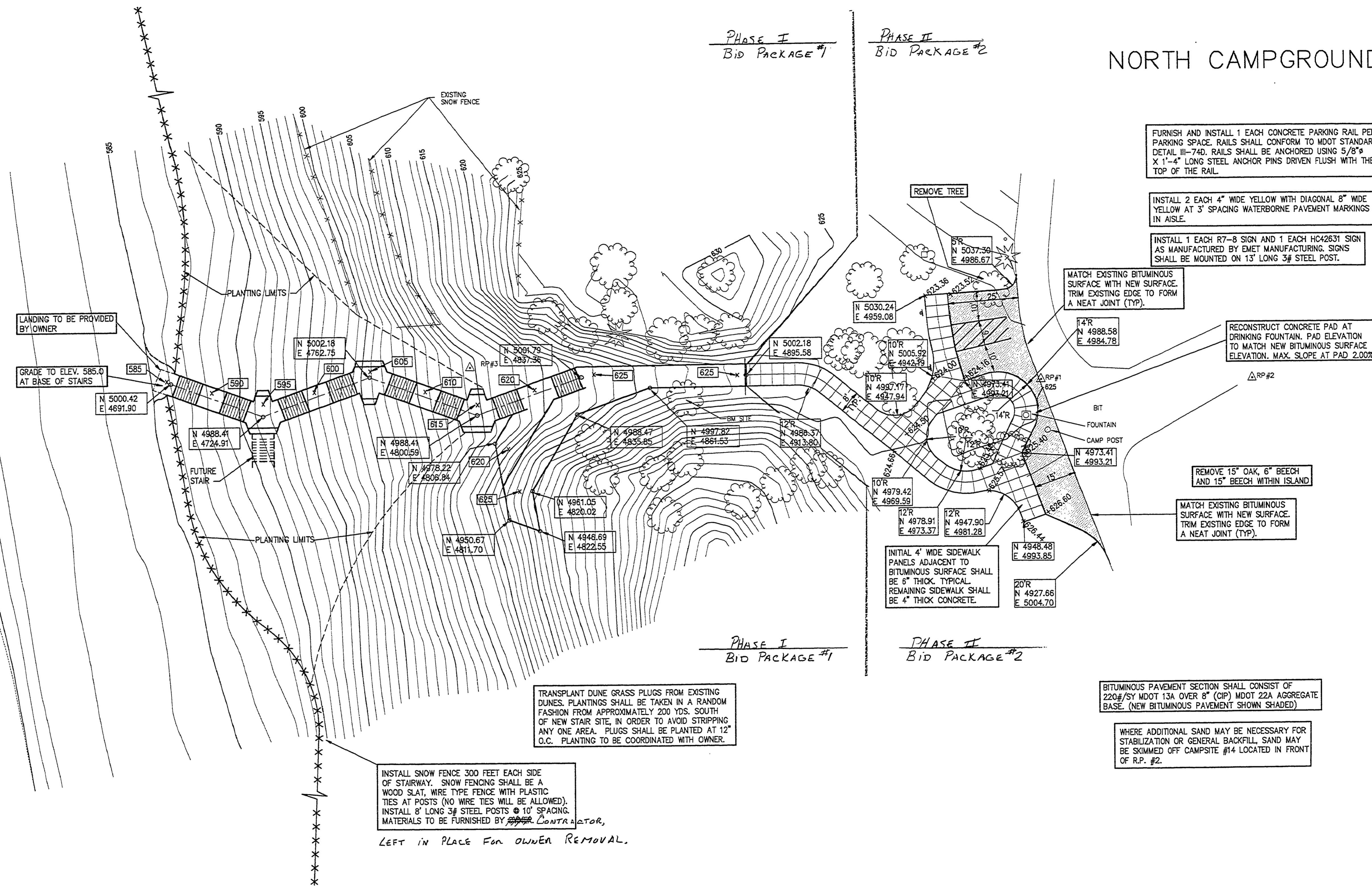
PROPOSAL #
 STATE PCA # 6880
 STATE INEX # 59180

**SITE PLAN
 MUSKOGON STATE PARK
 NORTH CAMPGROUND
 TIMBER STAIRWAY BEACH ACCESS**

SHEET
2 of 3



LAKE MICHIGAN



INSTALL SNOW FENCE 300 FEET EACH SIDE OF STAIRWAY. SNOW FENCING SHALL BE A WOOD SLAT, WIRE TYPE FENCE WITH PLASTIC TIES AT POSTS (NO WIRE TIES WILL BE ALLOWED). INSTALL 8' LONG 3/8" STEEL POSTS @ 10' SPACING. MATERIALS TO BE FURNISHED BY CONTRACTOR. LEFT IN PLACE FOR OWNER REMOVAL.

TRANSPLANT DUNE GRASS PLUGS FROM EXISTING DUNES. PLANTINGS SHALL BE TAKEN IN A RANDOM FASHION FROM APPROXIMATELY 200 YDS. SOUTH OF NEW STAIR SITE, IN ORDER TO AVOID STRIPPING ANY ONE AREA. PLUGS SHALL BE PLANTED AT 12" O.C. PLANTING TO BE COORDINATED WITH OWNER.

BITUMINOUS PAVEMENT SECTION SHALL CONSIST OF 220#/SY MDT 13A OVER 8" (O.P.) MDT 22A AGGREGATE BASE. (NEW BITUMINOUS PAVEMENT SHOWN SHADED)

WHERE ADDITIONAL SAND MAY BE NECESSARY FOR STABILIZATION OR GENERAL BACKFILL SAND MAY BE SKIMMED OFF CAMPSITE #14 LOCATED IN FRONT OF R.P. #2.

FURNISH AND INSTALL 1 EACH CONCRETE PARKING RAIL PER PARKING SPACE. RAILS SHALL CONFORM TO MDT STANDARD DETAIL III-740. RAILS SHALL BE ANCHORED USING 5/8" X 1'-4" LONG STEEL ANCHOR PINS DRIVEN FLUSH WITH THE TOP OF THE RAIL.

INSTALL 2 EACH 4" WIDE YELLOW WITH DIAGONAL 8" WIDE YELLOW AT 3' SPACING WATERBORNE PAVEMENT MARKINGS IN AISLE.

INSTALL 1 EACH R7-8 SIGN AND 1 EACH HC42631 SIGN AS MANUFACTURED BY EMET MANUFACTURING. SIGNS SHALL BE MOUNTED ON 13' LONG 3/8" STEEL POST.

MATCH EXISTING BITUMINOUS SURFACE WITH NEW SURFACE. TRIM EXISTING EDGE TO FORM A NEAT JOINT (TYP).

RECONSTRUCT CONCRETE PAD AT DRINKING FOUNTAIN. PAD ELEVATION TO MATCH NEW BITUMINOUS SURFACE ELEVATION. MAX. SLOPE AT PAD 2.00%

REMOVE 15" OAK, 6" BEECH AND 15" BEECH WITHIN ISLAND

MATCH EXISTING BITUMINOUS SURFACE WITH NEW SURFACE. TRIM EXISTING EDGE TO FORM A NEAT JOINT (TYP).

INITIAL 4" WIDE SIDEWALK PANELS ADJACENT TO BITUMINOUS SURFACE SHALL BE 6" THICK TYPICAL. REMAINING SIDEWALK SHALL BE 4" THICK CONCRETE.