

WITNESSES TO R.P.

R.P. 1 (CAPPED IRON)  
 S.E. COR. CONC. FOUNDATION, WEST, 124.42'  
 N.E. COR. CONC. FOUNDATION, N45°W, 103.38'  
 60d NAIL IN JT. OF CURB, N45°E, 47.37'  
 60d NAIL IN JT. OF CURB, S30°E, 55.55'

R.P. 2 (CAPPED IRON)  
 NAIL E. SIDE 14" MAPLE, S40°W, 27.86'  
 NAIL S. SIDE 14" PINE, N55°E, 55.98'  
 NAIL S. SIDE 18" PINE, EAST, 51.99'

R.P. 4 (CAPPED IRON)  
 NAIL S. SIDE 16" OAK, N75°W, 6.83'  
 NAIL E. SIDE 26" BEECH, S15°W, 30.32'  
 NAIL W. SIDE 18" OAK, N25, 50.55'  
 EDGE OF BITUMINOUS N., 5.0'±

R.P. 5 (CAPPED IRON)  
 NAIL E. SIDE 12" OAK, S20°W, 31.46'  
 NAIL S. SIDE 12" PINE, S40°E, 26.96'  
 60d NAIL N. SIDE 14" PINE, WEST, 23.78'  
 EDGE OF BITUMINOUS, N. 4.0'±

BENCH MARK  
 BM 1  
 60d NAIL N.W. SIDE 18" PINE  
 ELEVATION 101.19  
 BM 2  
 60d NAIL N. SIDE 14" PINE  
 ELEVATION 133.91

R.P. #	NORTH	EAST	ELEV.	DESC.
1	1000.00	2000.00	101.30	IRON
2	726.50	1900.49	102.11	IRON
3	583.05	1702.02	102.06	IRON
4	551.34	1347.15	115.54	IRON
5	661.18	1064.50	130.25	IRON
6	805.56	1105.78	146.07	IRON
7	1107.39	1441.66	108.55	IRON

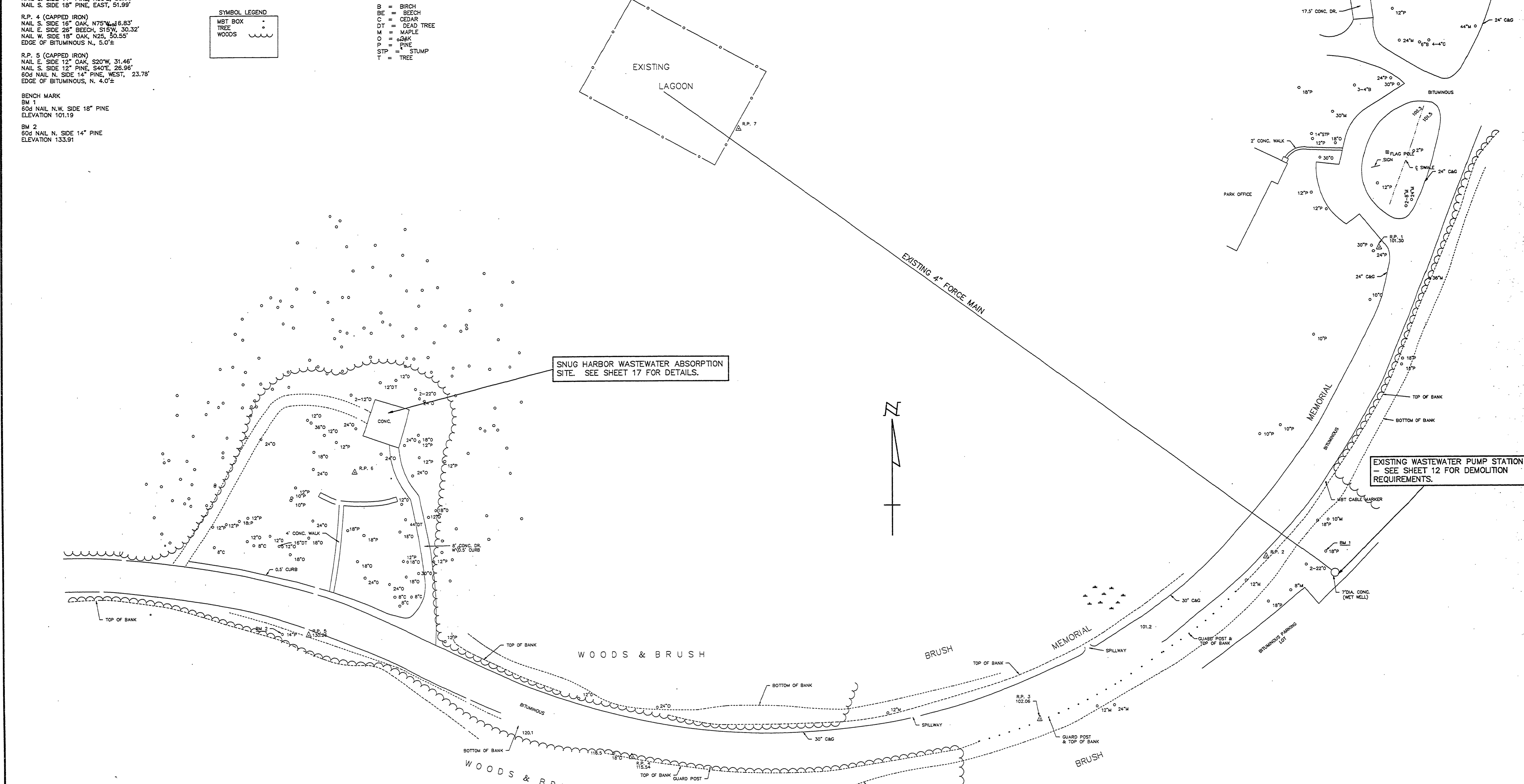
NOTE: BENCH MARK ELEVATION BASED ON  
 PLANS FOR "SNUG HARBOR" SHEET 8 OF 9  
 (ON FILE AT PARK OFFICE)  
 :USED TOP OF WET WELL WITH PUMP  
 ELEVATION 101.00 (SHEET 2 OF 2)

SYMBOL LEGEND

MBT BOX  
 TREE  
 WOODS

TREE LEGEND

B = BIRCH  
 BE = BEECH  
 C = CEDAR  
 DT = DEAD TREE  
 M = MAPLE  
 O = OAK  
 P = PINE  
 STP = STUMP  
 T = TREE



SNUG HARBOR WASTEWATER ABSORPTION SITE. SEE SHEET 17 FOR DETAILS.

EXISTING WASTEWATER PUMP STATION - SEE SHEET 12 FOR DEMOLITION REQUIREMENTS.

NOTE: C&G = CURB AND GUTTER

**GENERAL NOTES**

1. WASTEWATER SERVICE SHALL BE MAINTAINED THROUGHOUT DURATION OF PROJECT.
2. ALL WORK ALONG M213 SHALL BE IN ACCORDANCE WITH MUSKEGON COUNTY ROAD COMMISSION REQUIREMENTS. TRAFFIC CONTROL SHALL CONFORM TO MMUTCD DETAIL 610B-B. FLAG MAN FOR CONTROL OF TRAFFIC THROUGH THE CONSTRUCTION ZONE WILL BE REQUIRED.

DRWN BY: LJS	IDENTIFICATION NO. PROJECT - MUSKEGON	ISSUED FOR PRELIMINARY	DATE 7-21-94	<p>CAPITAL CONSULTANTS ENGINEERS</p>	<p>STATE OF MICHIGAN DEPARTMENT OF MANAGEMENT AND BUDGET</p>	<p>QUALITY OF LIFE RECREATION BOND                  MICHIGAN DEPARTMENT OF NATURAL RESOURCES                  PARKS DIVISION - STATE ACCT. NO. 607-75-2450-400</p>	<p>MUSKEGON STATE PARK                  SNUG HARBOR WASTEWATER SYSTEM                  GENERAL SITE MAP</p>	<p>SCALE: 1"=40'                  PROJ. NO.: 91159                  SHEET 3 OF 21</p>
CHKD BY: GJF	STATE ACCOUNT	CONSTRUCTION	DATE 9-23-94					
APPRD BY: GDA	607-75-2450-400	FINAL RECORD						

FILE NAME: 1159DGS.M  
 PLOT DATE: 9-21-94  
 UPDATED BY: LJS