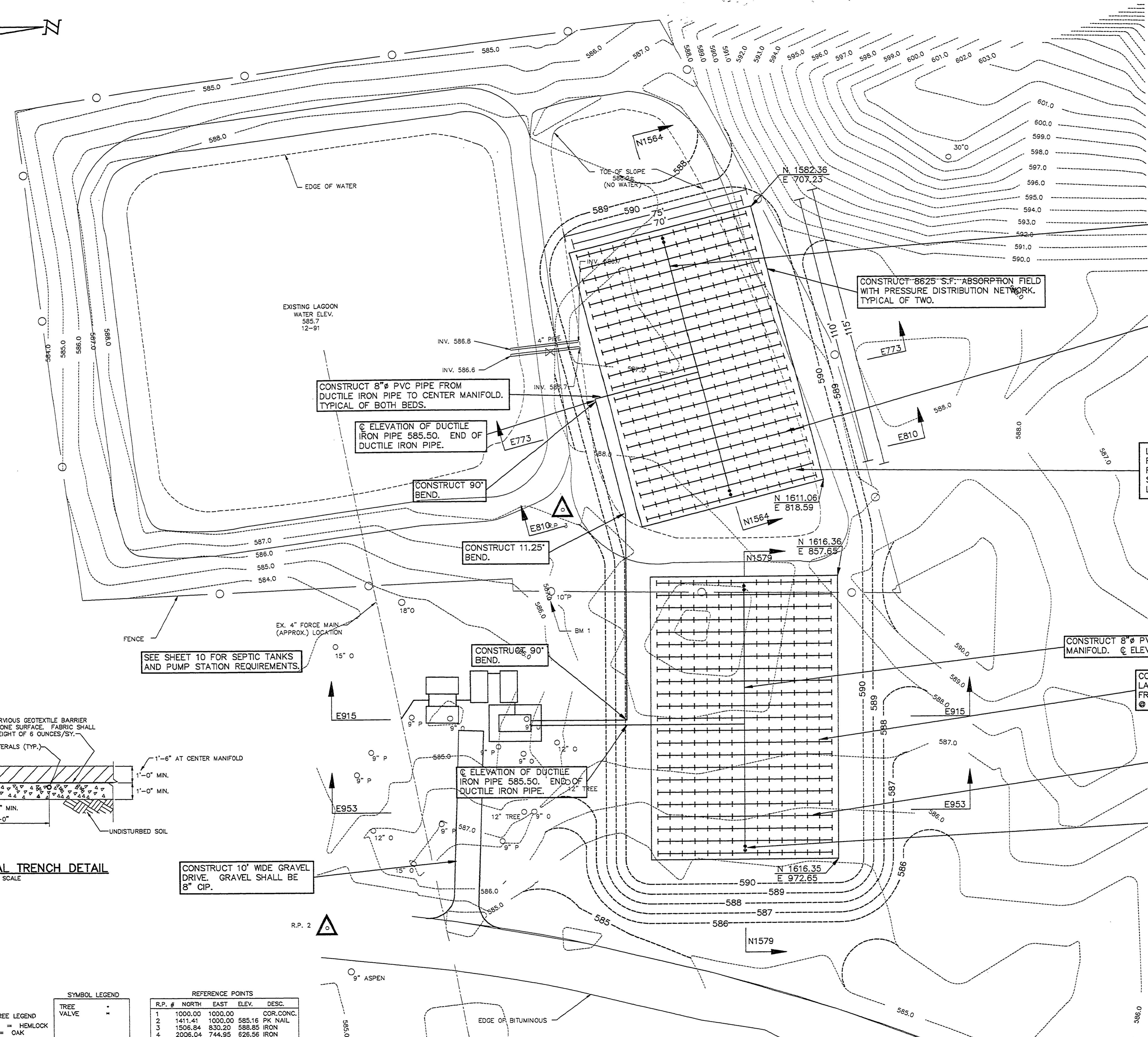
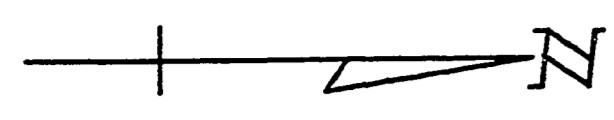


GENERAL NOTES

1. PLASTIC PIPING SHALL BE PVC SCHEDULE 40 OR SDR 26, REFER TO SPECIFICATION 02750.
2. AFTER DRILLING 3/8" HOLES IN THE LATERAL PIPING, CONTRACTOR SHALL REMOVE ANY BURRS. LATERALS SHALL HAVE CAPS INSTALLED ON END.
3. SOLVENT WELD TYPE PIPE SHALL BE CONSTRUCTED PER MANUFACTURERS RECOMMENDATION.
4. TWO 3/8" HOLES SHALL BE DRILLED IN EACH END OF EACH 8" MANIFOLD PIPE TO PROVIDE DRAINAGE. THE 8" MANIFOLD PIPES ARE TO BE LEVEL AT ELEVATION SHOWN ON DRAWINGS.



CONSTRUCT 8" PVC CENTER MANIFOLD. ϕ ELEVATION 588.60.

CONSTRUCT 8625 S.F. ABSORPTION FIELD WITH PRESSURE DISTRIBUTION NETWORK. TYPICAL OF TWO.

CONSTRUCT 1-1/4" SOLVENT WELD PVC LATERALS. SLOPE LATERALS @ 0.10% AWAY FROM CENTER MANIFOLD. DRILL 3/8" HOLES @ 5 FOOT SPACING.

CONSTRUCT 8" PVC PIPE FROM DUCTILE IRON PIPE TO CENTER MANIFOLD. TYPICAL OF BOTH BEDS.

ϕ ELEVATION OF DUCTILE IRON PIPE 585.50. END OF DUCTILE IRON PIPE.

CONSTRUCT 90° BEND.

CONSTRUCT 11.25° BEND.

CONSTRUCT 90° BEND.

CONSTRUCT 8" PVC CENTER MANIFOLD. ϕ ELEVATION 588.60.

CONSTRUCT 1-1/4" SOLVENT WELD PVC LATERALS. SLOPE LATERALS @ 0.10% AWAY FROM CENTER MANIFOLD. DRILL 3/8" HOLES @ 5 FOOT SPACING.

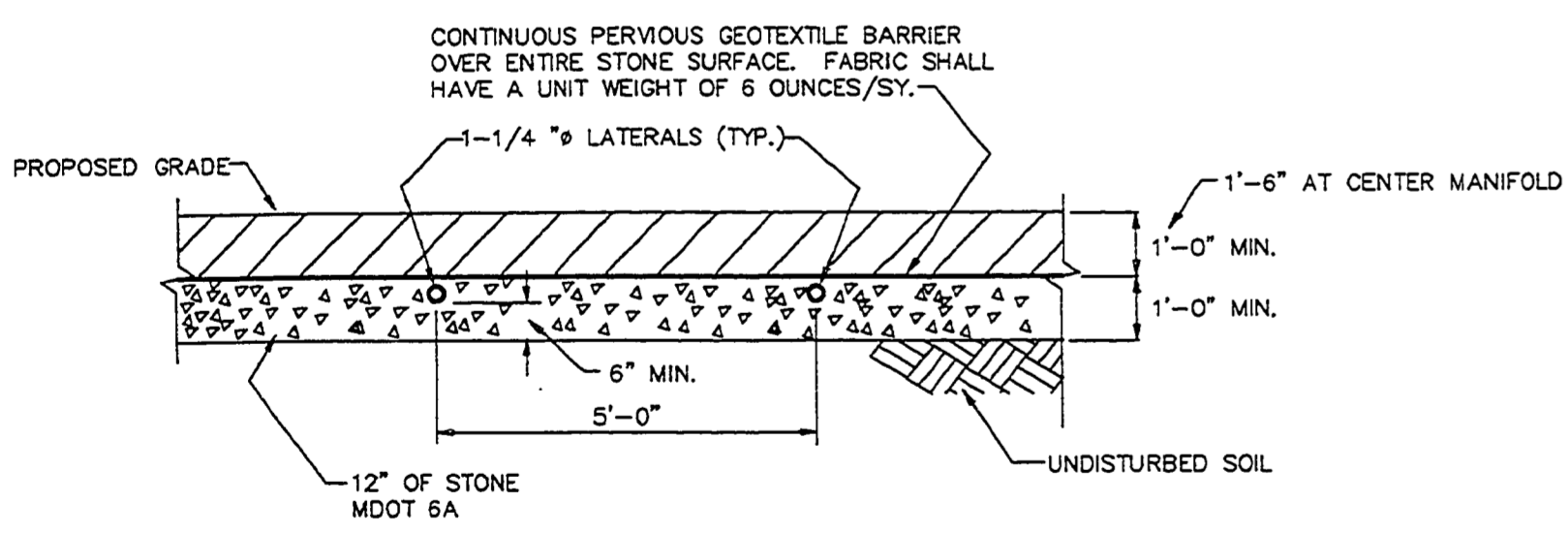
LATERALS SHALL BE 35' IN LENGTH. FIRST HOLE SHALL BE LOCATED 5 FEET FROM CENTER MANIFOLD. HOLE SPACING SHALL BE 5 FEET C-C AND SHALL BE LOCATED IN THE BOTTOM OF THE LATERAL.

DRILL 2 EACH 3/8" HOLES IN BOTTOM OF MANIFOLD AT EACH END. TYPICAL OF EACH NETWORK.

SEE SHEETS 8 AND 9 FOR CAMPGROUND ABSORPTION FIELD CROSS SECTIONS.

LEGEND

- NEW CONTOURS
- EXISTING CONTOURS



TYPICAL LATERAL TRENCH DETAIL
NO SCALE

BENCH MARK

BM 1
NAIL IN E. SIDE 10" PINE
ELEVATION 587.41

WITNESSES TO R.P.

R.P. 1
N.W. COR. CONC. TO CONTACT STATION (CHANNEL CAMPGROUND)

R.P. 2 (PK NAIL)
NAIL S. SIDE 18" OAK, S85°E, 52.47'
NAIL E. SIDE 14" OAK, N25°W, 43.74'
NAIL N. SIDE 8" HEMLOCK, S80°W, 56.17'
FACE OF SIGN POST, S90°W, 15.16'

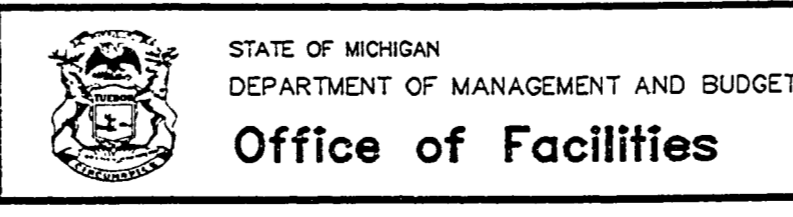
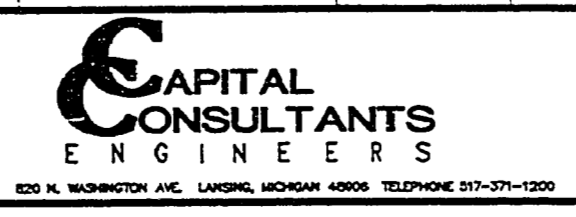
SYMBOL LEGEND

TREE LEGEND
HEM = HEMLOCK
O = OAK
P = PINE

REFERENCE POINTS

R.P. #	NORTH	EAST	ELEV.	DESC.
1	1000.00	1000.00		COR.CONC.
2	1411.41	1000.00	585.16	PK NAIL
3	1506.84	830.20	588.85	IRON
4	2006.04	744.95	526.56	IRON

DRN BY:	IDENTIFICATION NO.	ISSUED FOR	DATE
DES'D BY: DAL	PROJECT - MUSKEGON	PRELIMINARY <input checked="" type="checkbox"/>	7-21-94
CHK'D BY: GJF	STATE ACCOUNT	CONSTRUCTION <input checked="" type="checkbox"/>	11-09-94
APP'D BY: GDA	607-75-2450-400	FINAL RECORD <input type="checkbox"/>	



QUALITY OF LIFE RECREATION BOND
MICHIGAN DEPARTMENT OF NATURAL RESOURCES
PARKS DIVISION - STATE ACCT. NO. 607-75-2450-400

MUSKEGON STATE PARK
CAMPGROUND WASTEWATER SYSTEM
ABSORPTION FIELD DETAILS

SCALE: 1"=20'
PROJ. NO.: 91159
SHEET 7 OF 21

FILE NO.: 11690CAF
PLOT DATE: 11-09-94
UPDATED BY: LIS