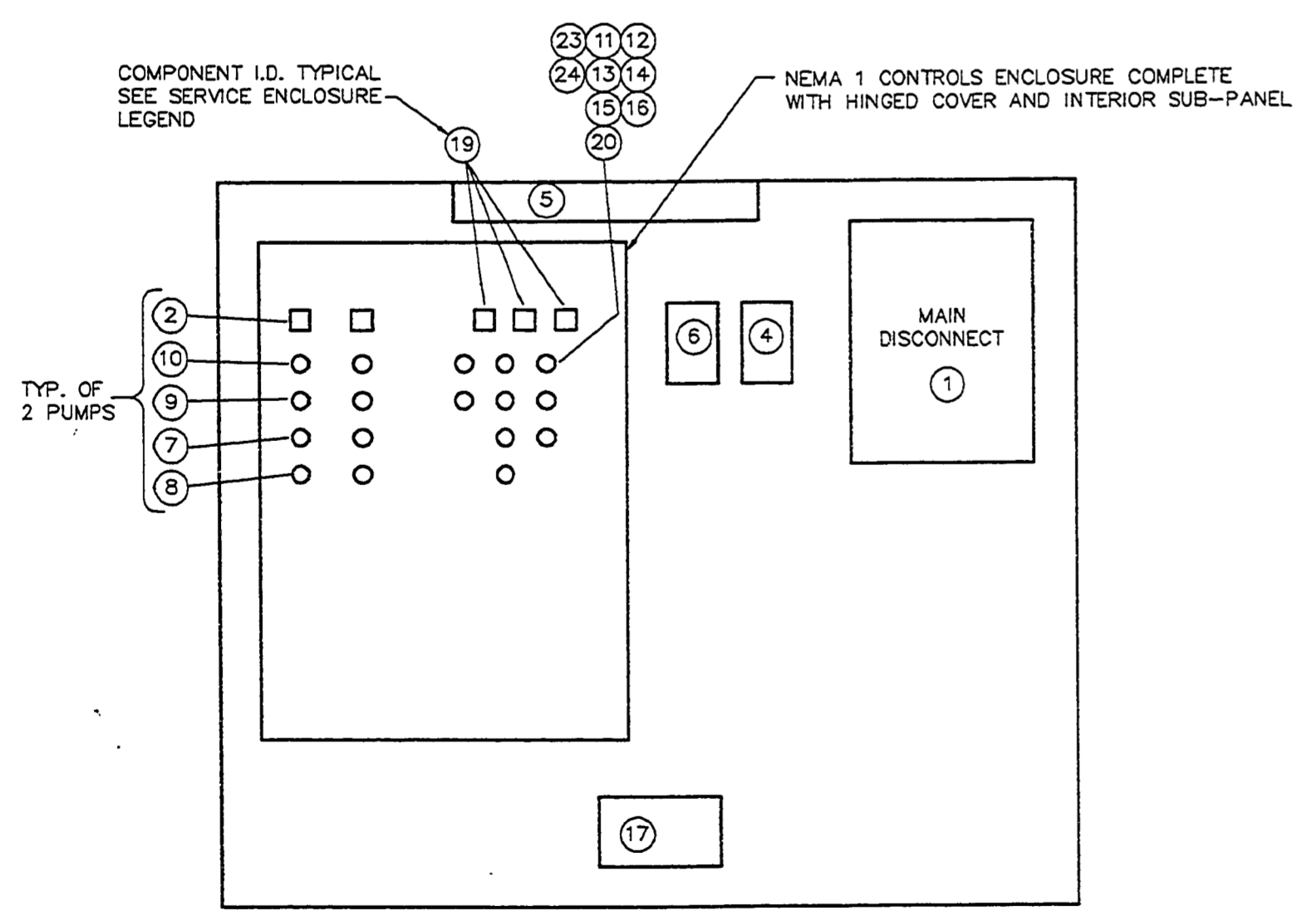
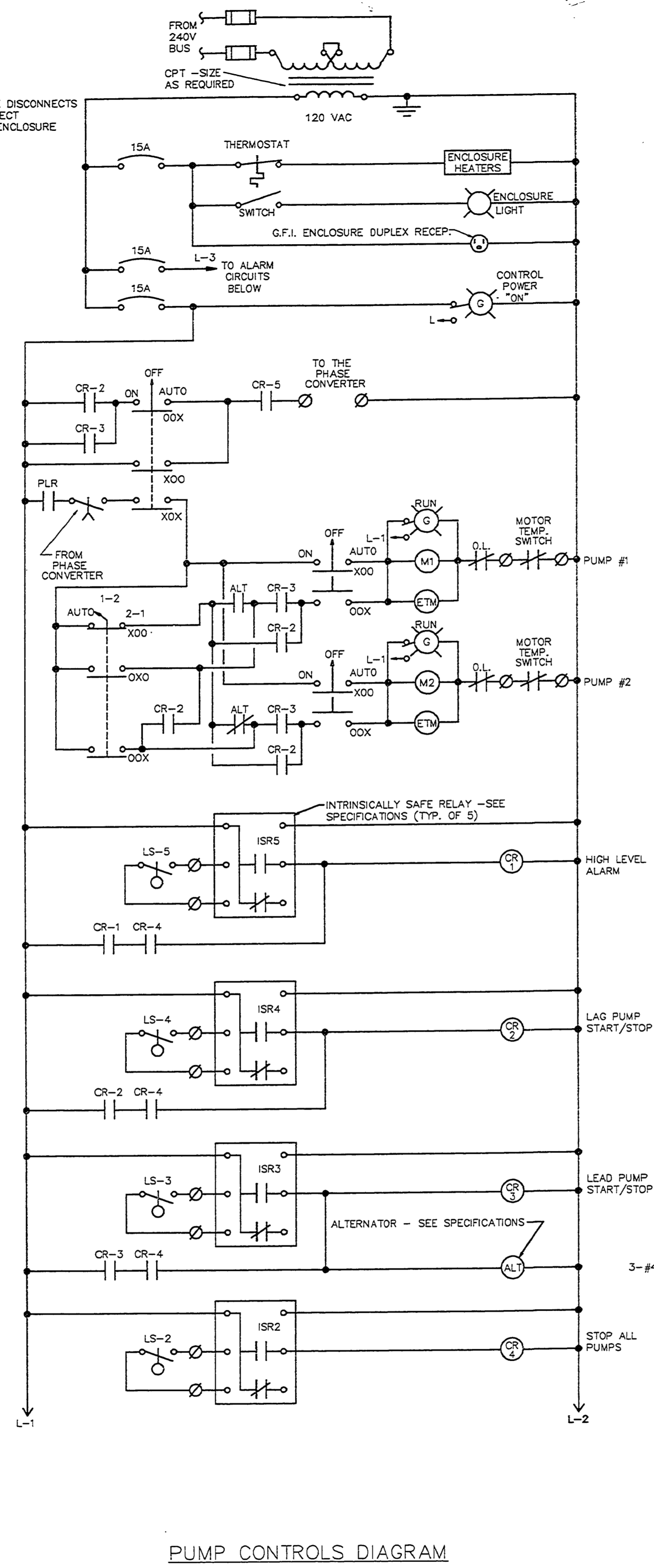


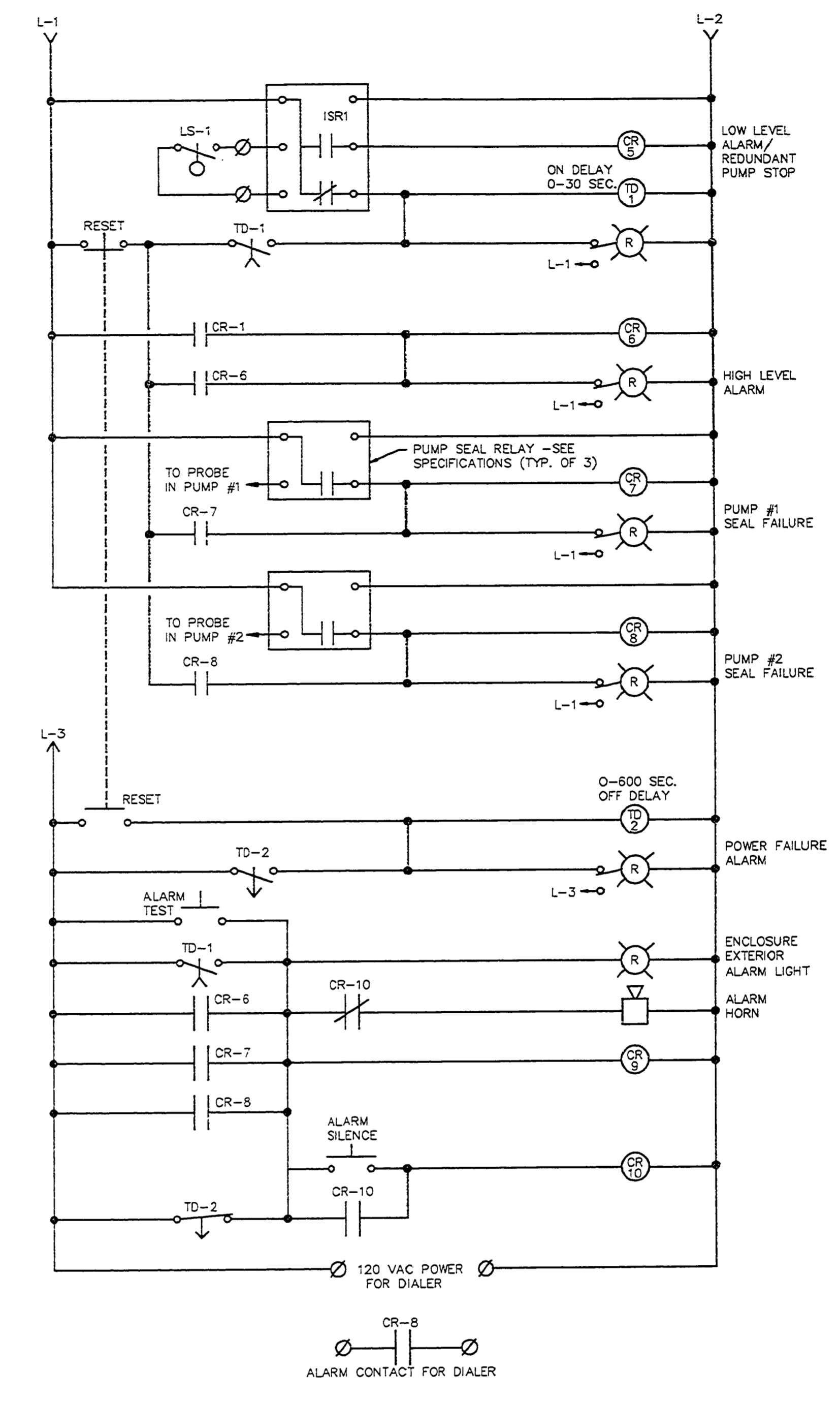
SERVICE ENCLOSURE DETAIL
NO SCALE
(SEE SHEET 21 FOR ELECTRICAL SERVICE DETAILS)



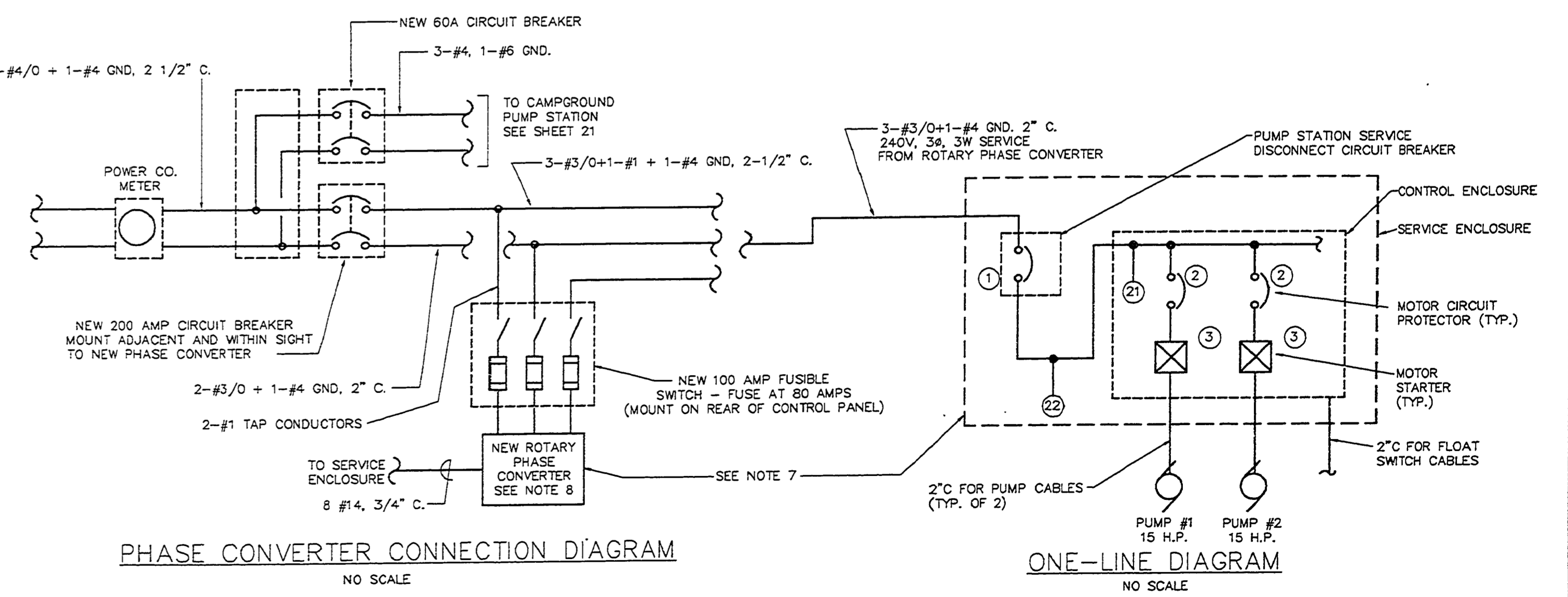
TYPICAL SERVICE ENCLOSURE SUBPANEL LAYOUT DETAIL
NO SCALE



PUMP CONTROLS DIAGRAM



PUMP CONTROLS DIAGRAM



SERVICE ENCLOSURE LEGEND		
COMP. I.D. (N)	DESCRIPTION	NOTES
1	80 AMP, 3 POLE, 600V ENCLOSED CIRCUIT BREAKER	1
2	50 AMP, 3 POLE, 600V MOTOR CIRCUIT PROTECTOR	3, 4
3	AUTOTRANSFORMER TYPE MOTOR STARTER, RESET BUTTON THROUGH FACE OF CONTROL ENCLOSURE SIZE PER NEC FOR APPROVED PUMPS	2, 3
4	LIGHT SWITCH AND COVER PLATE	---
5	TWO FOOT, 20W FLUORESCENT FIXTURE WITH THERMOPLASTIC LENS	---
6	DUPLEX RECEPTACLE (GF) AND COVER PLATE	---
7	"RUN" INDICATOR LIGHT	---
8	"HAND-OFF-AUTO" SELECTOR SWITCH	---
9	"PUMP SEAL FAILURE" INDICATOR LIGHT	---
10	ELAPSED TIME METER	---
11	NOT USED	---
12	"LOW WATER ALARM" INDICATOR LIGHT	---
13	"HIGH WATER ALARM" INDICATOR LIGHT	---
14	"ALARM TEST" BUTTON	---
15	"ALARM RESET" BUTTON	---
16	"ALARM SILENCE" BUTTON	---
17	CABINET HEATER AND THERMOSTAT	---
18	NOT USED	---
19	CONTROL POWER CIRCUIT BREAKER	3,4
20	"CONTROL POWER ON" INDICATING LAMP	---
21	PHASE LOSS RELAY	3
22	SURGE ARRESTOR	---
23	"AUTOMATIC, 1-2, 2-1" SELECTOR SWITCH	---
24	PHASE CONVERTOR "ON-OFF-AUTO" SELECTOR SWITCH	---

- NOTES:**
- ENCLOSED CIRCUIT BREAKERS SHALL BE LISTED AND LABELED AS SUITABLE FOR USE AS SERVICE EQUIPMENT.
 - PROVIDE CIRCUIT BREAKER AND THERMAL OVERLOAD ELEMENTS (HEATERS) PER THE N.E.C. ARTICLE 430.
 - MOUNT EQUIPMENT REFERENCED TO THIS NOTE ON SUB-PANEL OF CONTROL ENCLOSURE, ALLOW MINIMUM OF TWENTY PERCENT SPACE ON SUB-PANEL FOR FUTURE EQUIPMENT.
 - CIRCUIT BREAKER HANDLES SHALL PROJECT THROUGH FACE OF CONTROL ENCLOSURE.
 - PROVIDE SEAL-OFF FITTINGS IN CONDUITS ENTERING THE WET WELL IN ACCORDANCE WITH THE N.E.C. ARTICLE 501.
 - MOUNT ROTARY PHASE CONVERTER TO PUMP STATION CONCRETE APRON ADJACENT TO PUMP STATION CONTROL PANEL.
 - ALL ENCLOSURES WITH CONTROL EQUIPMENT INSIDE SHALL BE UL LABELED AS AN ASSEMBLY.
 - THE PHASE CONVERTER SHALL BE THE ROTARY TYPE AND SHALL GENERATE A 240V, THREE PHASE, THREE WIRE OUTPUT FROM A 240V, SINGLE PHASE, TWO WIRE SOURCE. THE PHASE CONVERTER SHALL BE SIZED TO OPERATE THE TWO SUBMERSIBLE WASTEWATER PUMPS SPECIFIED IN SECTION 15244 EITHER INDIVIDUALLY OR SIMULTANEOUSLY. INSTALL OVERCURRENT PROTECTION TO COMPLY WITH THE RECOMMENDATIONS OF THE PHASE CONVERTER MANUFACTURER AND AS REQUIRED BY 1993 NEC ARTICLE 455.

FILE NAME: 11595E1
 UPDATED ON: 11/10/94 14:36
 BASE SHEET FROM FILE: 01A1EBUL
 UPDATED BY: DRS