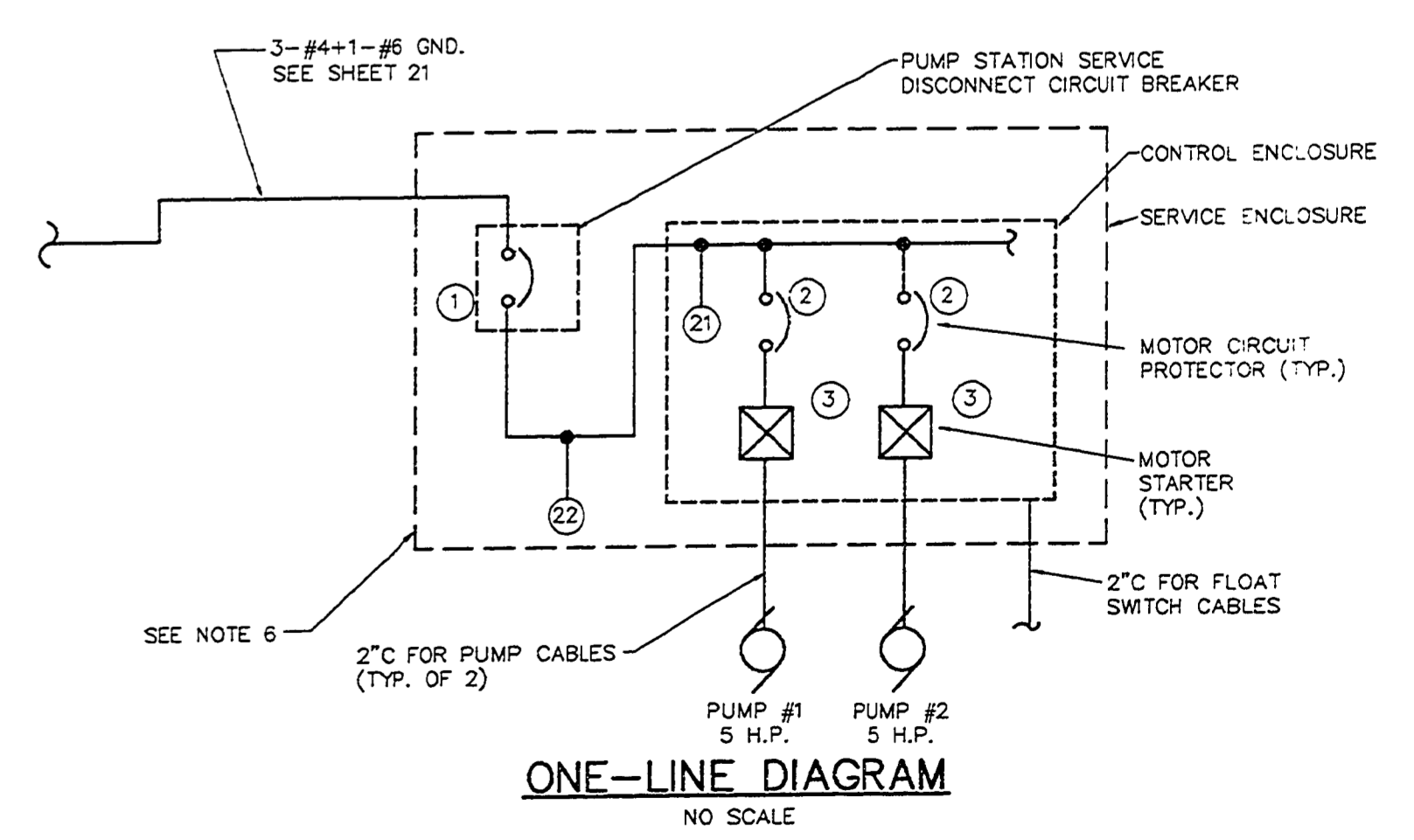
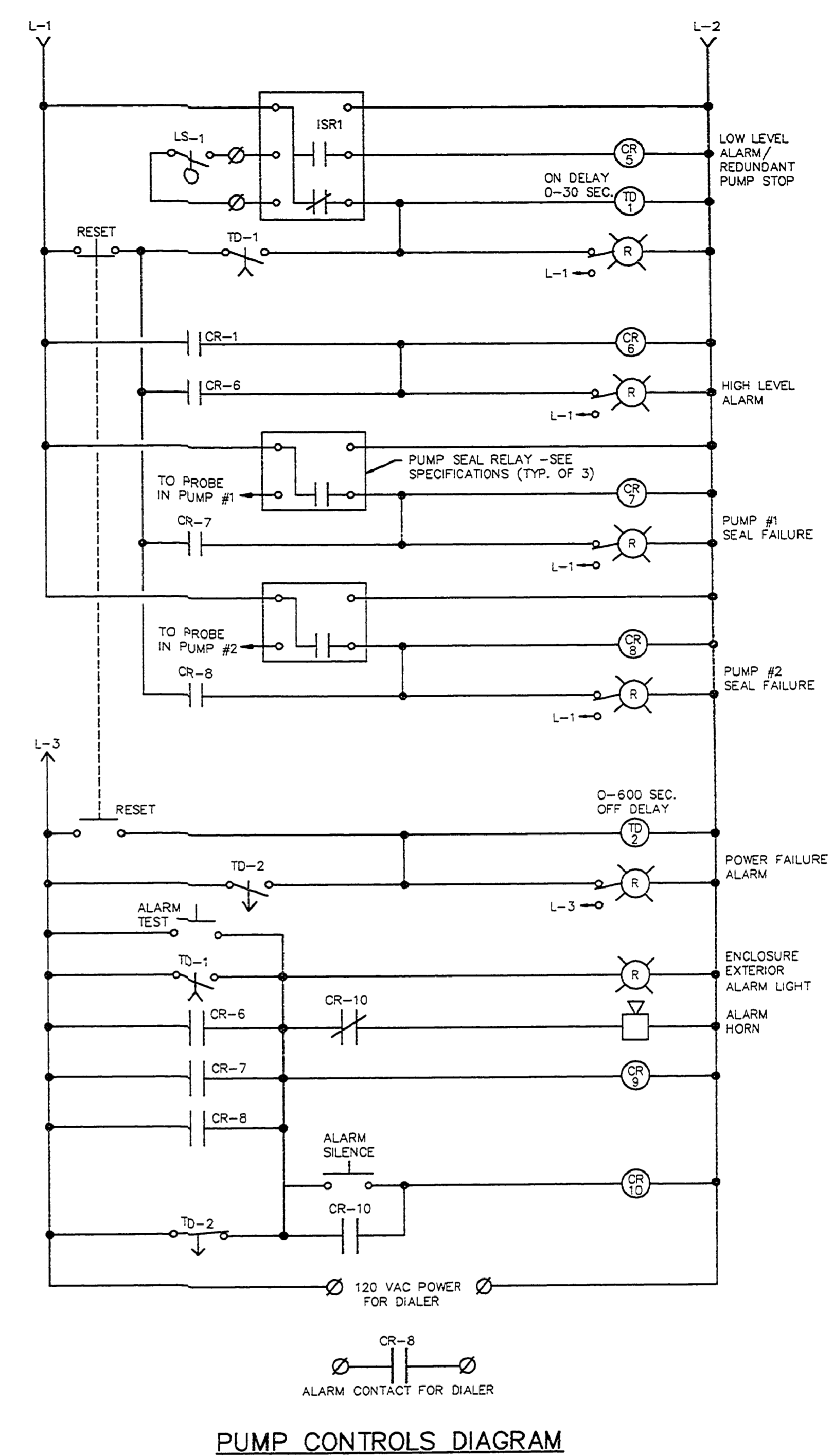
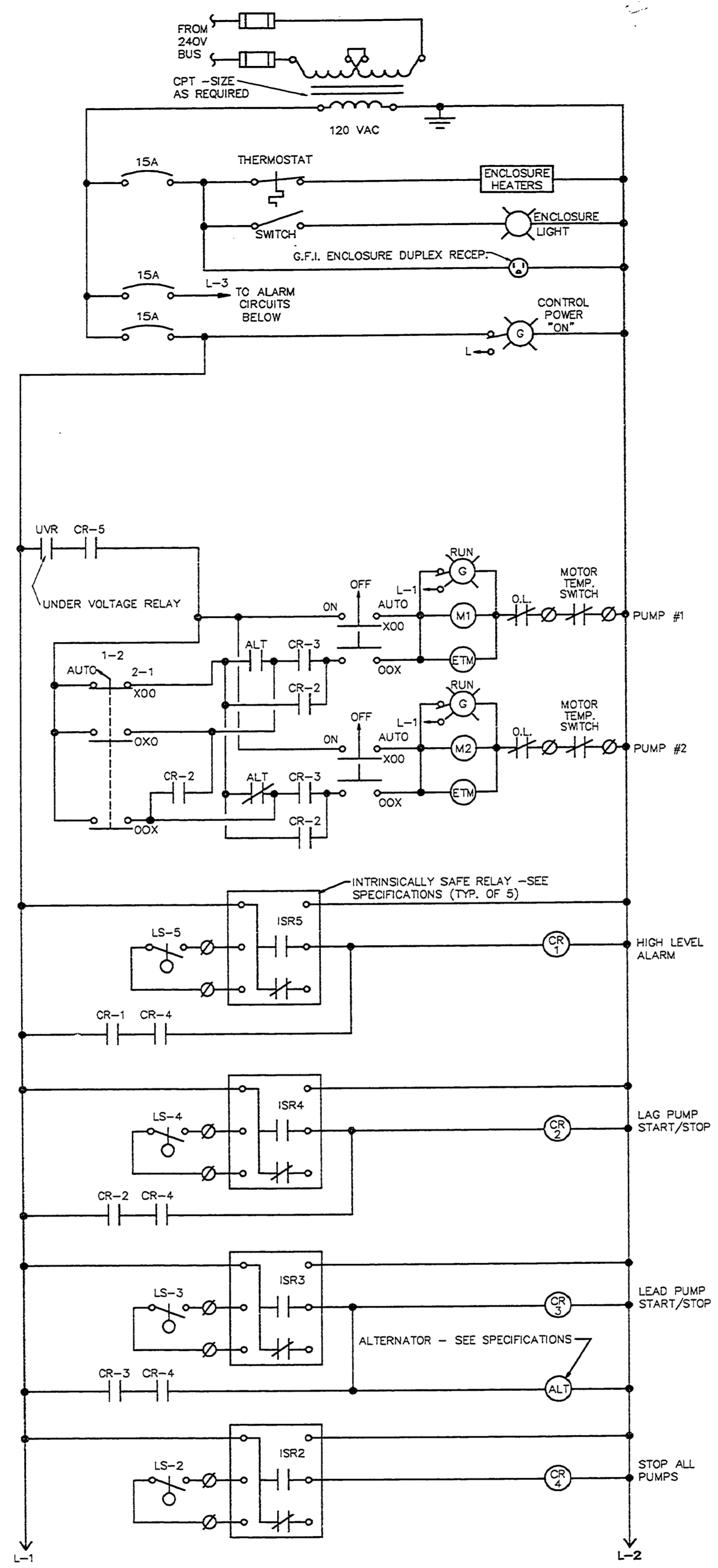
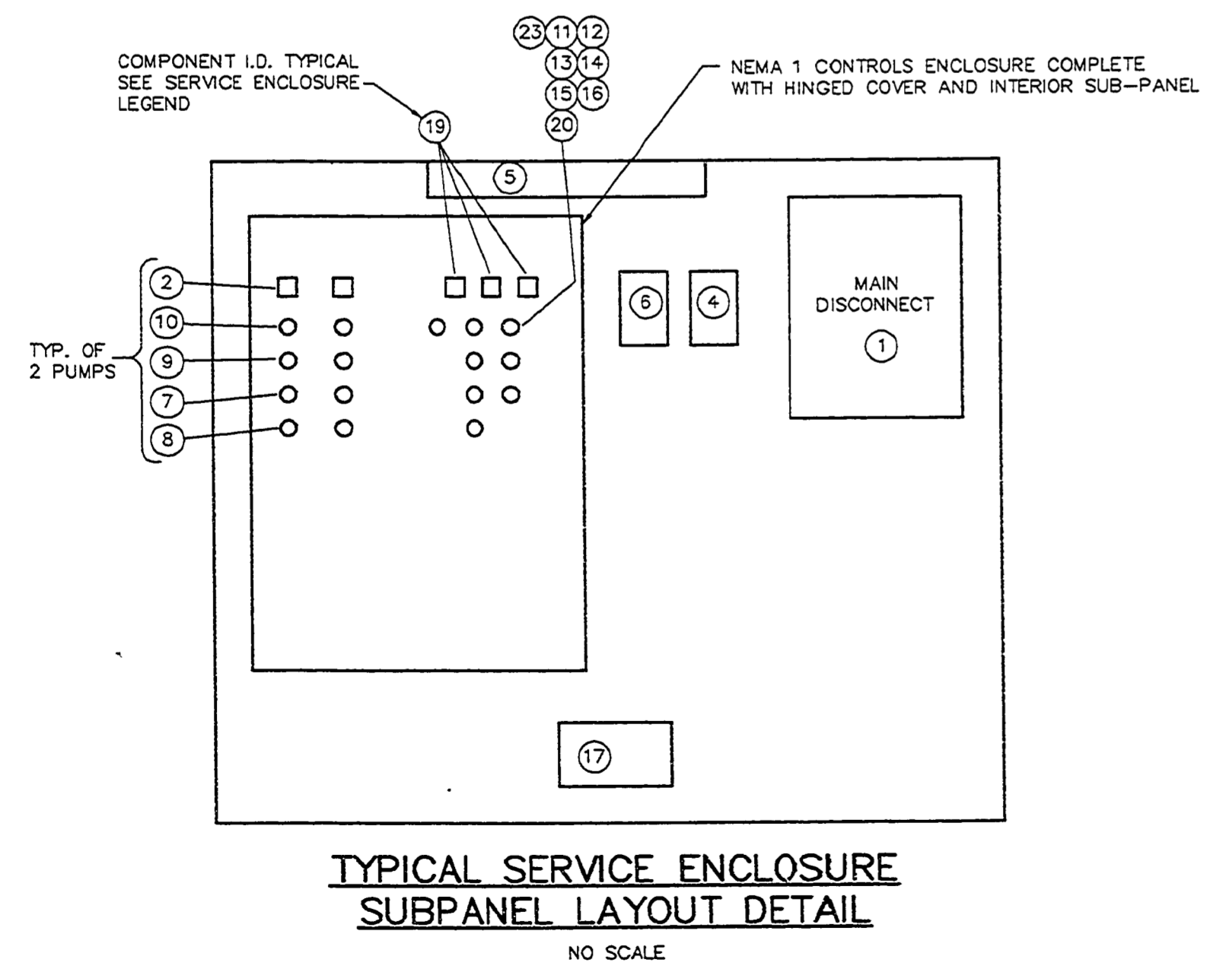
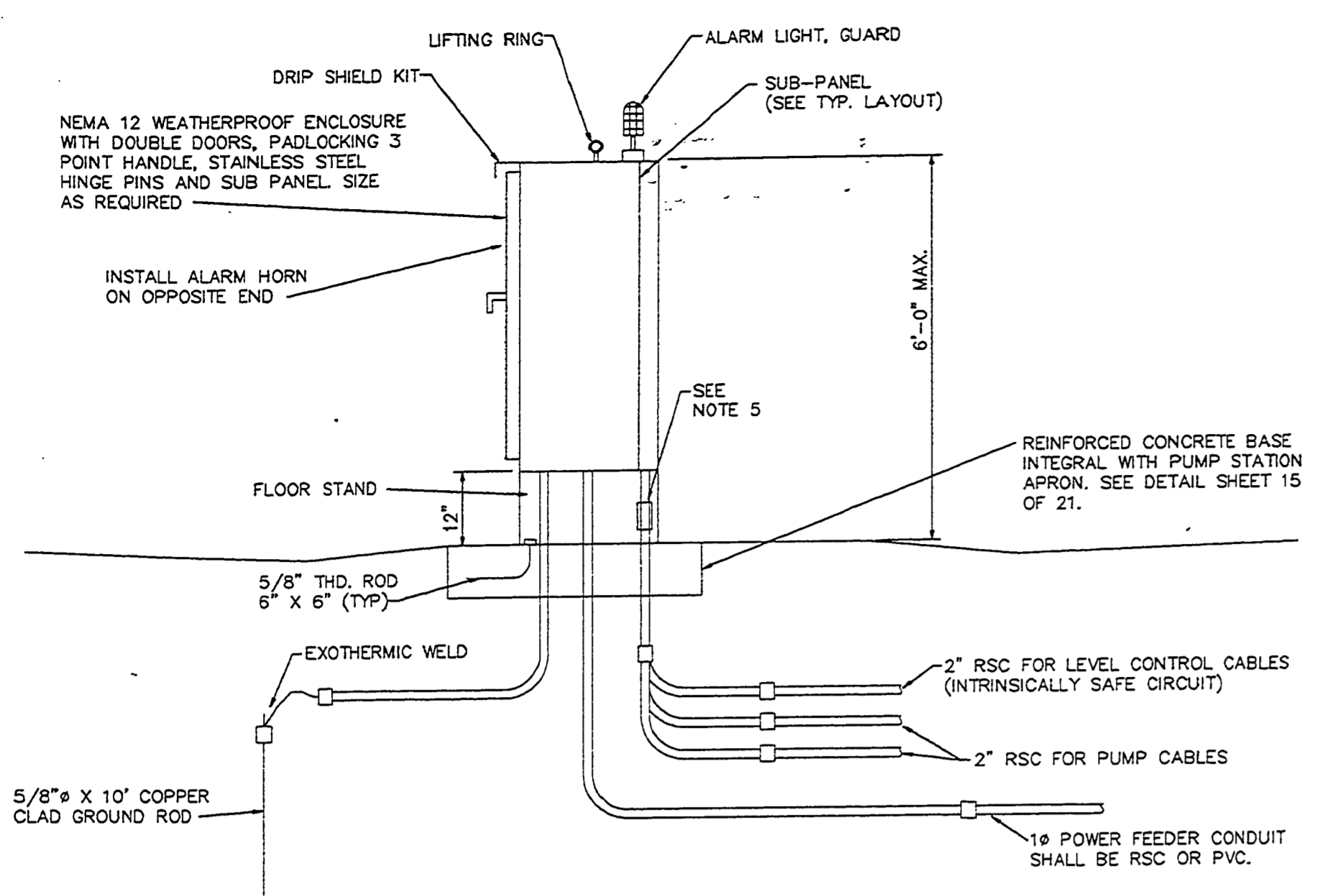


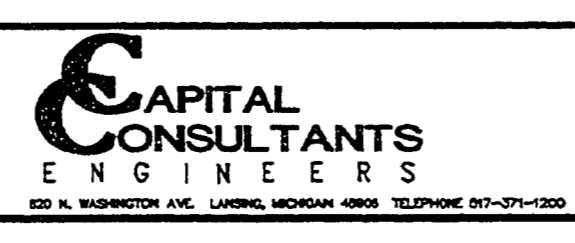
SERVICE ENCLOSURE LEGEND		
COMP. I.D. (N)	DESCRIPTION	NOTES
1	60 AMP, 2 POLE, 600V ENCLOSED CIRCUIT BREAKER	1
2	50 AMP, 2 POLE, 600V MOTOR CIRCUIT PROTECTOR	3, 4
3	TYPE MOTOR STARTER, RESET BUTTON THROUGH FACE OF CONTROL ENCLOSURE SIZE PER NEC FOR APPROVED PUMPS	2, 3
4	LIGHT SWITCH AND COVER PLATE	---
5	TWO FOOT, 20W FLUORESCENT FIXTURE WITH THERMOPLASTIC LENS	---
6	DUPLEX RECEPTACLE (GR) AND COVER PLATE	---
7	"RUN" INDICATOR LIGHT	---
8	"HAND-OFF-AUTO" SELECTOR SWITCH	---
9	"PUMP SEAL FAILURE" INDICATOR LIGHT	---
10	ELAPSED TIME METER	---
11	NOT USED	---
12	"LOW WATER ALARM" INDICATOR LIGHT	---
13	"HIGH WATER ALARM" INDICATOR LIGHT	---
14	"ALARM TEST" BUTTON	---
15	"ALARM RESET" BUTTON	---
16	"ALARM SILENCE" BUTTON	---
17	CABINET HEATER AND THERMOSTAT	---
18	NOT USED	---
19	CONTROL POWER CIRCUIT BREAKER	3,4
20	"CONTROL POWER ON" INDICATING LAMP	---
21	UNDERVOLTAGE RELAY	3
22	SURGE ARRESTOR	---
23	"AUTOMATIC, 1-2, 2-1" SELECTOR SWITCH	---

- NOTES:
- ENCLOSED CIRCUIT BREAKERS SHALL BE LISTED AND LABELLED AS SUITABLE FOR USE AS SERVICE EQUIPMENT.
 - PROVIDE CIRCUIT BREAKER AND THERMAL OVERLOAD ELEMENTS (HEATERS) PER THE N.E.C. ARTICLE 430.
 - MOUNT EQUIPMENT REFERENCED TO THIS NOTE ON SUB-PANEL OF CONTROLS ENCLOSURE. ALLOW MINIMUM OF TWENTY PERCENT SPACE ON SUB-PANEL FOR FUTURE EQUIPMENT.
 - CIRCUIT BREAKER HANDLES SHALL PROJECT THROUGH FACE OF CONTROL ENCLOSURE.
 - PROVIDE SEAL-OFF FITTINGS IN CONDUITS ENTERING THE WET WELL IN ACCORDANCE WITH THE N.E.C. ARTICLE 501.
 - ALL ENCLOSURES WITH CONTROL EQUIPMENT INSIDE SHALL BE UL LABELLED AS AN ASSEMBLY.



FILE NAME: 11592Z
 UPDATED ON: 11/10/94 14:43
 BASE SHEET FROM FILE: 0141EBUL
 UPDATED BY: DRS

DRN BY: MLM	IDENTIFICATION NO.	ISSUED FOR	DATE
DEST. BY: MLM	PROJECT - MUSKEGON	PRELIMINARY <input checked="" type="checkbox"/>	7-21-94
CRD BY: M.JJ	STATE ACCOUNT	CONSTRUCTION <input checked="" type="checkbox"/>	11-09-94
APP'D BY: GDA	607-75-2450-400	FINAL RECORD <input type="checkbox"/>	



STATE OF MICHIGAN
DEPARTMENT OF MANAGEMENT AND BUDGET
Office of Facilities

QUALITY OF LIFE RECREATION BOND
MICHIGAN DEPARTMENT OF NATURAL RESOURCES
PARKS DIVISION - STATE ACCT. NO. 607-75-2450-400

MUSKEGON STATE PARK
SNUG HARBOR WASTEWATER SYSTEM
PUMP STATION ELECTRICAL

SCALE: AS SHOWN
PROJ. NO.: 91159
SHEET 16 OF 21