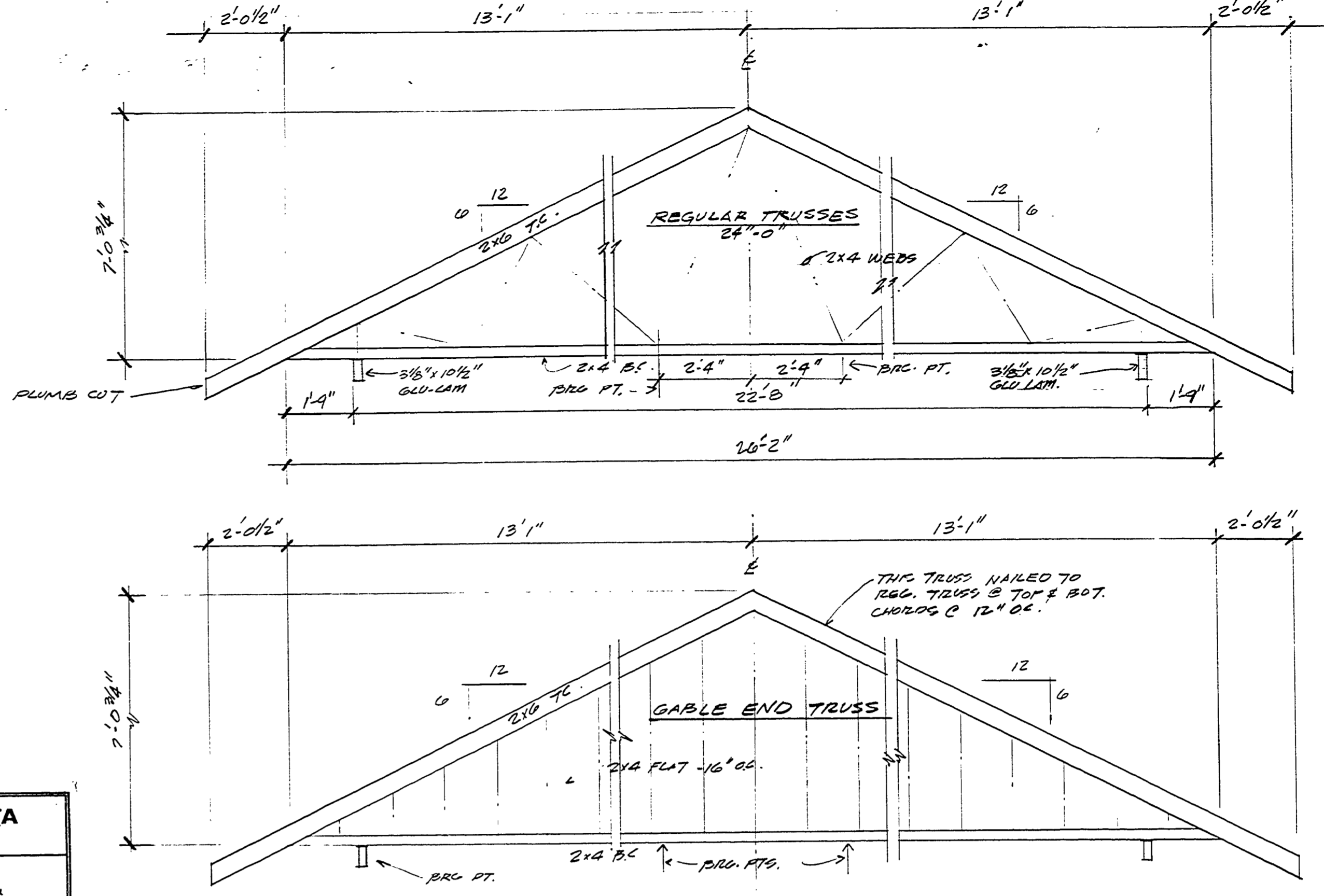


**1 SKYLIGHT DETAIL**  
 (BUILDING 'B')  
 SCALE: 1/2" = 1'-0"  
 NOTE ALL TRIM @ THIS DETAIL TO BE S4S (SMOOTH FINISH)

**2 HVAC GRILLE DETAIL**  
 (BUILDING 'B')  
 SCALE: 1/2" = 1'-0"



**TRUSS PROFILES**

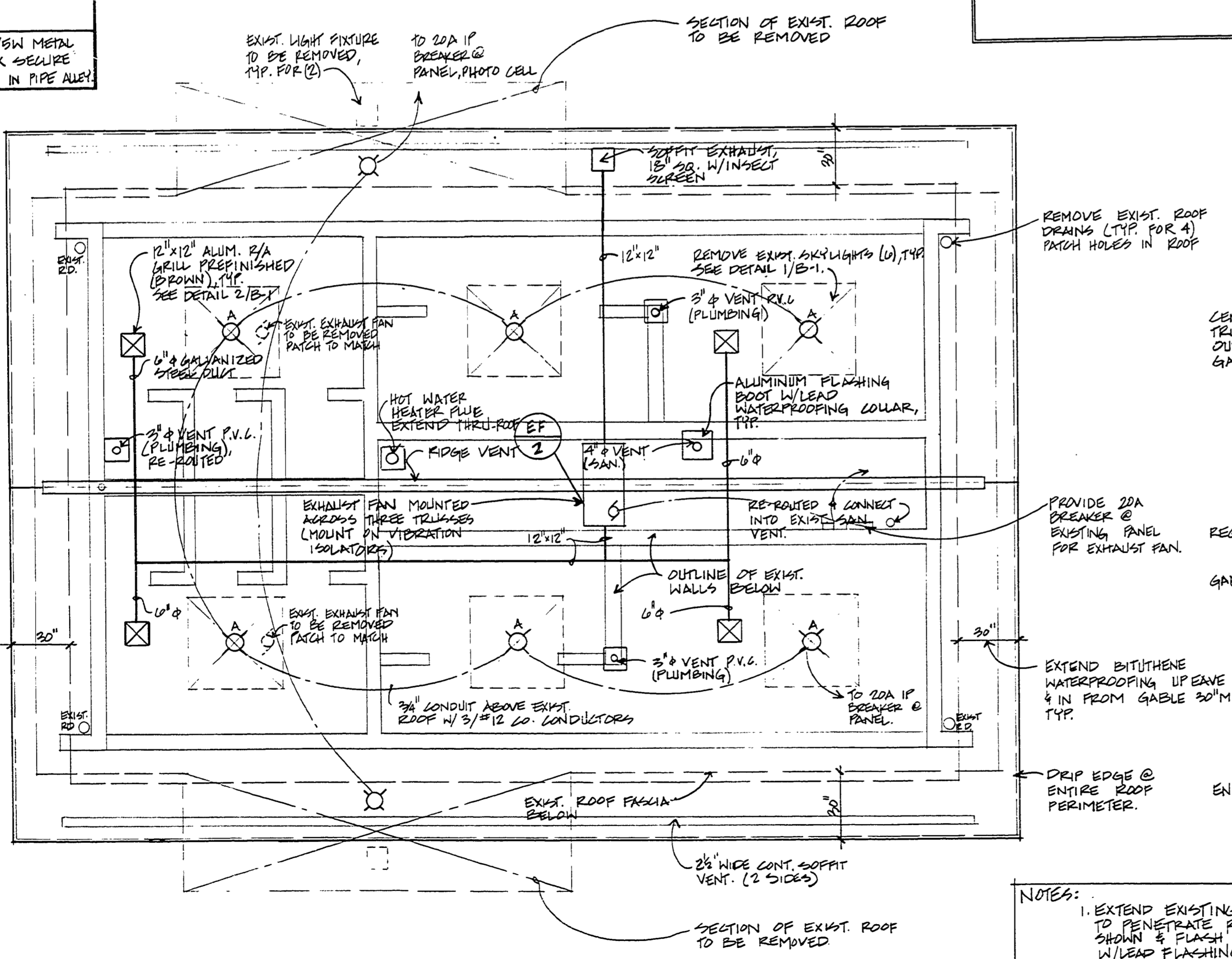
THIS TRUSS TO BE NAILED TO REGULAR TRUSS AS NOTED

HVAC Equipment Schedule										
Mark	Description	Manufacturer		Elect.	Gas.	CFM	HP	BTU		Remarks
		Name	Catig.#					Htg./Clg.		
1	TRUSS PAN	CARELSEA	150\"/>							

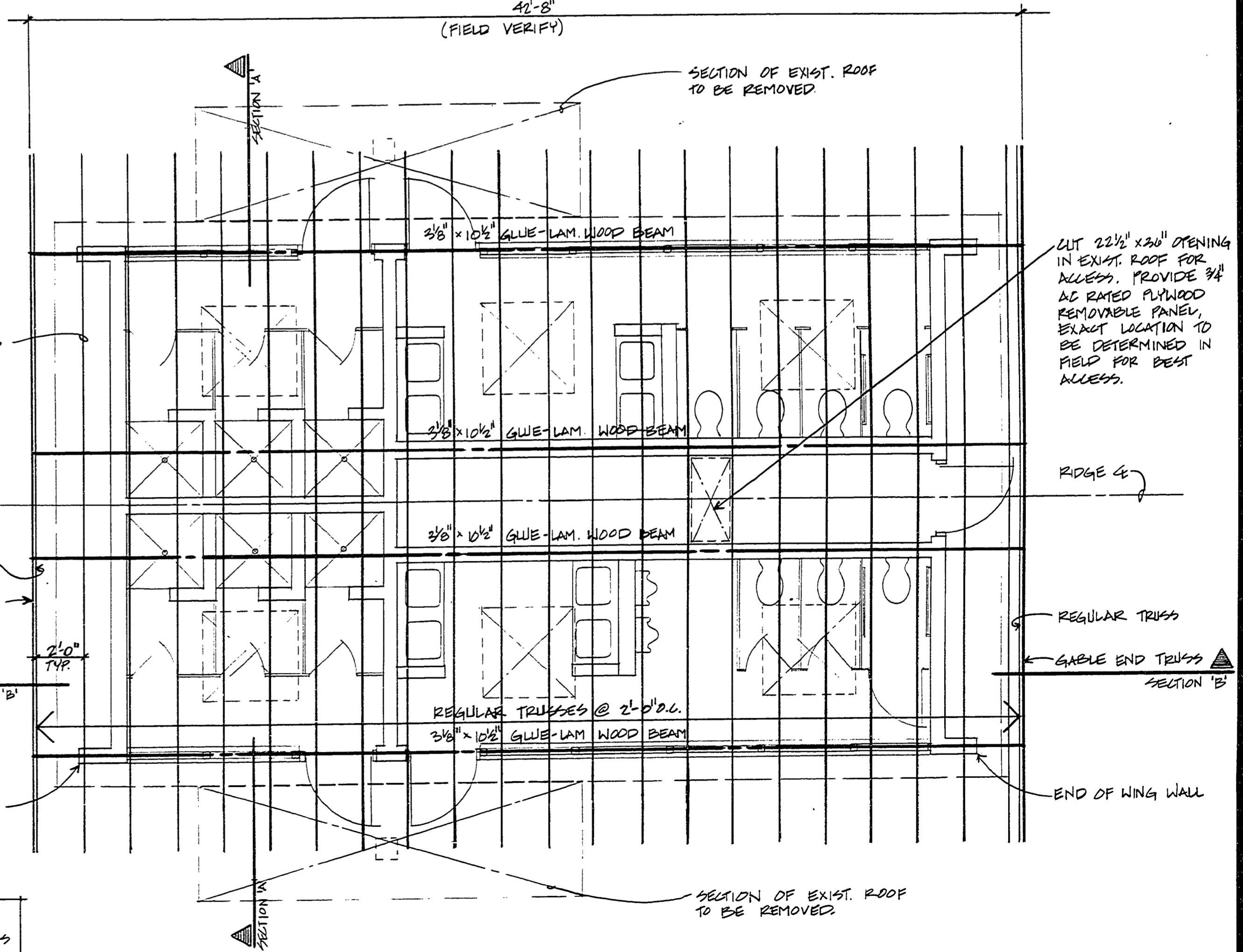
NOTE 1. ADJUSTABLE BEAT DRIVE BALL BEGS., CABINET DIMENSIONS TO FIT INTO TRUSS SPACE.\*  
 \* MOUNT FOR FULL MAINTENANCE ACCESS

ROOF TRUSS DESIGN DATA		
Wood Roof Trusses are to be pre-engineered & designed by an Engineer registered in the State of Michigan based on the following design loads. Contractor to submit "Sealed Drawings" marked "Approved by Contractor for Owner's Record." Responsibility for correctness of "Sealed Drawings" is the responsibility of the Contractor. Field verify all dimensions.		
Top Chord Live Load	=	35 PSF
Top Chord Dead Load	=	10 PSF
Bottom Chord Dead Load	=	10 PSF
<b>Total</b>	=	<b>55 PSF</b>

LIGHT FIXTURE SCHEDULE	
'A'	MANUFACTURE-MARLO #LN702004, ITSW METAL HANDLE, SURFACE MOUNTED, OPTION-MAX SECURE FEATURE, PROVIDE 1 EXTRA LAMP & STORE IN PIPE ALLEY



**ROOF PLAN & MECH./ELECT. PLAN**  
 (BUILDING 'B')  
 SCALE: 1/4" = 1'-0"



**ROOF FRAMING PLAN**  
 (BUILDING 'B')  
 SCALE: 1/4" = 1'-0"

NOTES:  
 1. EXTEND EXISTING ROOF VENTS TO PENETRATE ROOF AT LOCATIONS SHOWN & FLASH COMPLETELY W/LEAD FLASHING.