

# SLEEPY HOLLOW STATE PARK

## CONSTRUCTION PLANS FOR ROAD, PARKING AND BOAT LAUNCH RAMP

PROJECT NUMBER

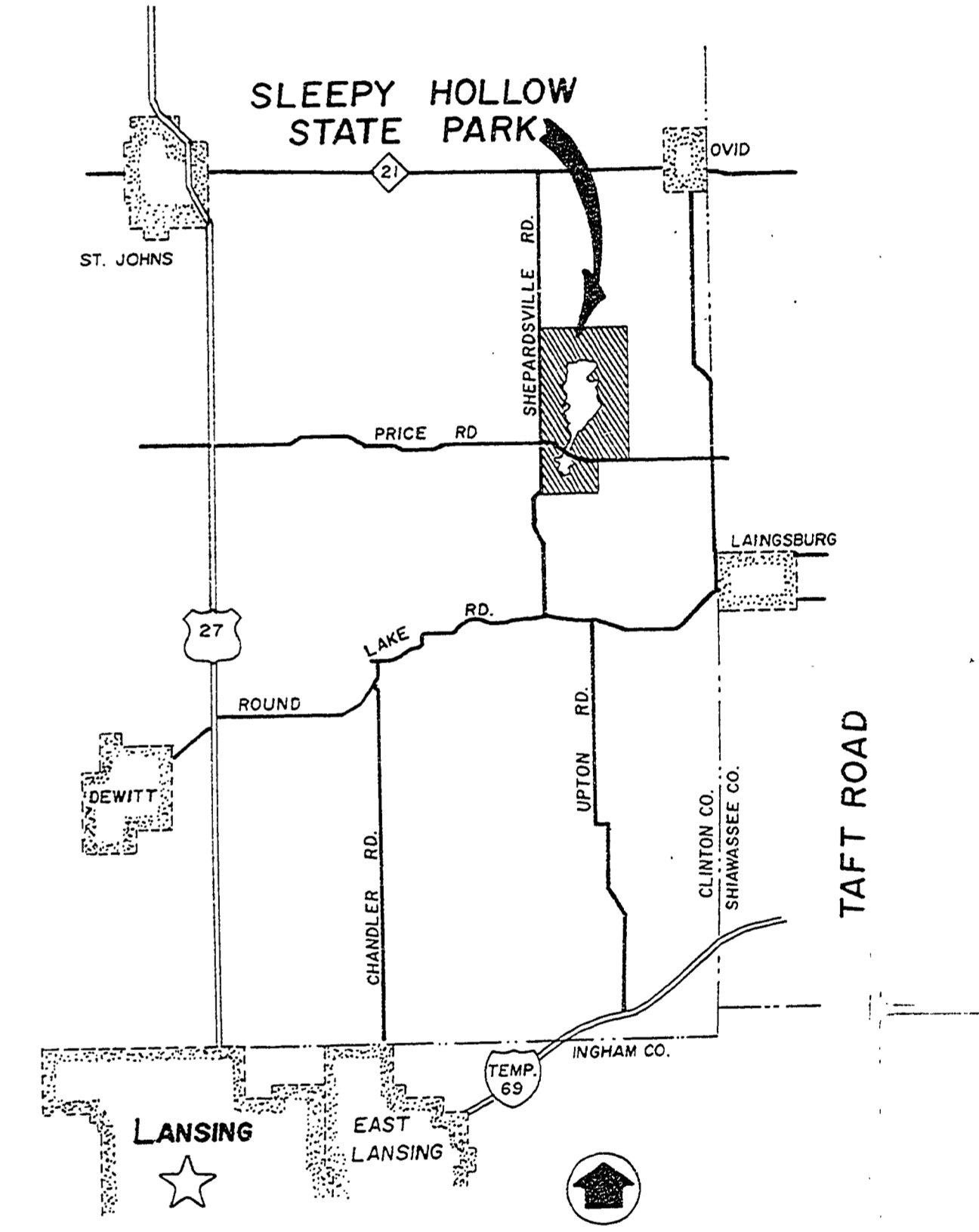
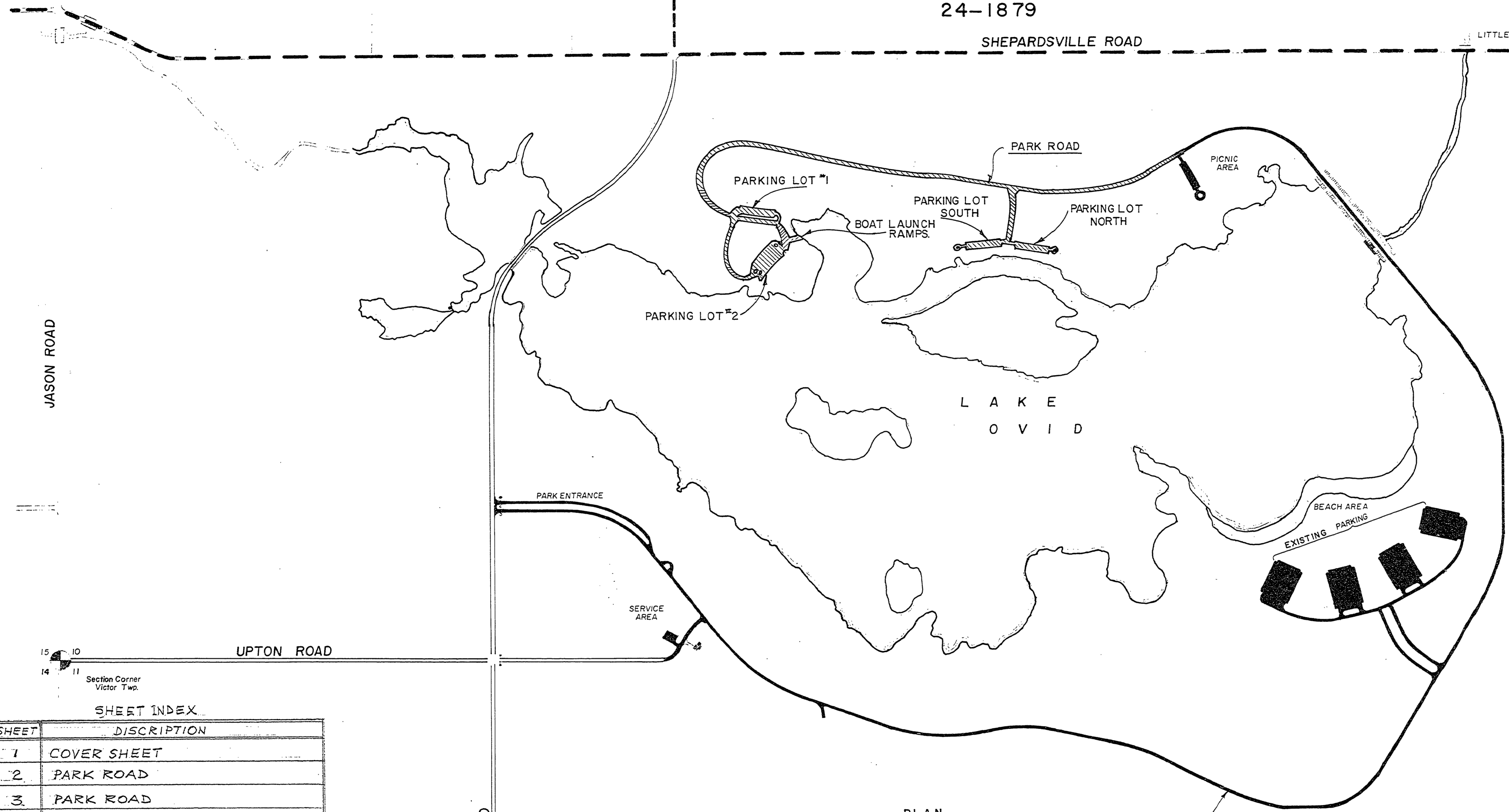
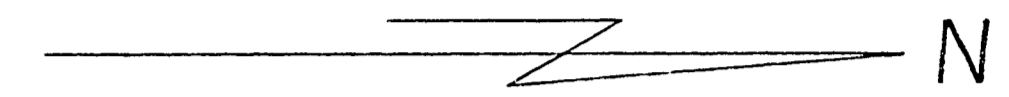
24-1879

SHEPARDVILLE ROAD

SECTION CORNER  
OVID TWP. 33 28  
34 27

US 27  
SIX MILES

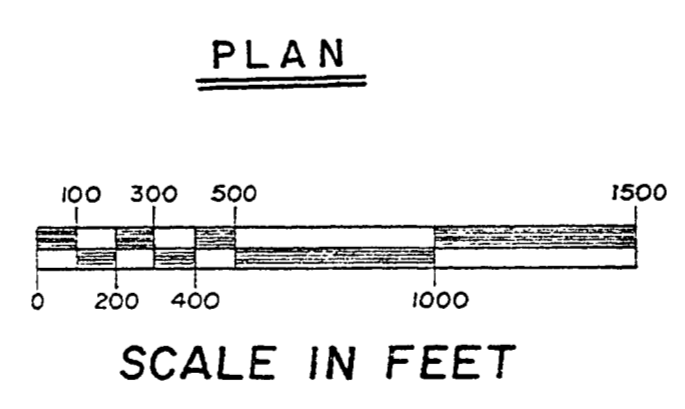
LITTLE MAPLE RIVER



LOCATION MAP

SHEET INDEX

SHEET	DISCRIPTION
1	COVER SHEET
2	PARK ROAD
3	PARK ROAD
4	PARK ROAD
5	PARK ROAD AND PARKING LOT #1
6	ROAD, PARKING LOT #2 & BOAT LAUNCH RAMP
7	ROAD AND PARKING LOTS: NORTH & SOUTH
8	STANDARD LAUNCH RAMP



**LEGEND**

EXISTING ROADS AND PARKING  
 PROPOSED PARK ROAD, PARKING LOTS AND BOAT LAUNCH RAMP

EXISTING BITUMINOUS AGGREGATE PAVEMENT  
(ALL SHADED AREAS)

SOIL CONSERVATION SERVICE

APPROVED *Loren S. Osdel*  
ST. CONS. ENGR. 3-9-78 DATE

SOIL CONSERVATION SERVICE

APPROVED *Wendell B. W. W. W. W.* 3-14-78 DATE

BUILDING COMMITTEE APPROVAL

BY: \_\_\_\_\_ DATE \_\_\_\_\_

RECOMMENDED FOR APPROVAL: *W. K. W. W. W.* 11-20-77 DATE  
ENGINEERING OR ARCHITECTURAL SUPERVISOR

RECOMMENDED FOR APPROVAL: \_\_\_\_\_ DATE \_\_\_\_\_  
PROGRAM AND PLAN COORDINATOR

DIVISION/REGION APPROVAL

BY: *John R. W. W. W.* 12-13-77 DATE  
DIVISION CHIEF/REGIONAL MANAGER

APPROVED: *W. W. W. W.* 4-19-78 DATE  
CHIEF ENGINEER

SURVEYED BY	DATE	DRAWN BY	DATE	NO.	DATE	BY	REVISIONS	NO.	DATE	BY	REVISIONS
R. ROON	8-77	G. MILLER	11-77	1.				3.			
A. PETRAVICIUS	7-77			2.				4.			

MICHIGAN  
DEPARTMENT OF NATURAL RESOURCES

COVER SHEET  
SHEET TITLE

SLEEPY HOLLOW S.P.  
ROAD, PARKING AND BOAT LAUNCH  
PROJECT

PROJECT NO. 24-1879  
SHEET 1 OF 8 PLAN NO. E-111