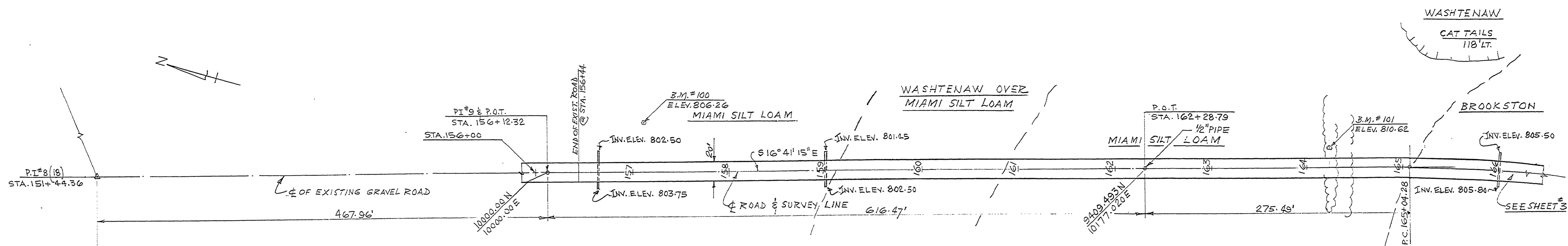


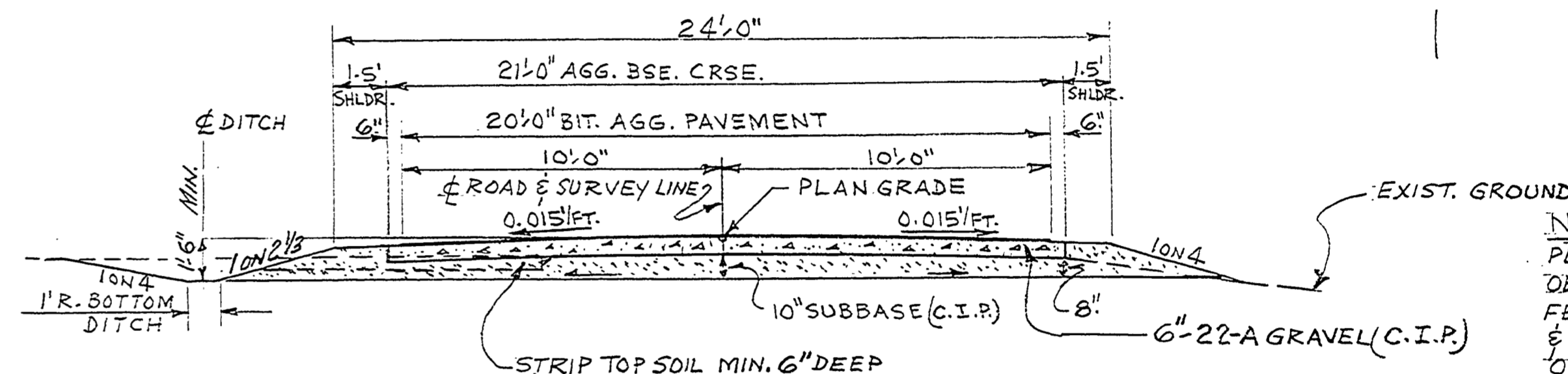
B.M. #100 ELEV. 806.26  
 STA. 157+12 @ 52' LT. OF ROAD  
 R.R. SPIKE IN W. SIDE 28' SHAG BARK HICKORY.

WITNESSES TO P.O.T. STA. 162+28.79  
 4" TWIN CHERRY, S 68° E, 73.99'  
 B.M. #101, S 22° E, 191.68'

B.M. #101 ELEV. 810.62  
 STA. 164+20 @ 21' LT. OF ROAD  
 R.R. SPIKE IN W. SIDE 12' 13" W. HICKORY

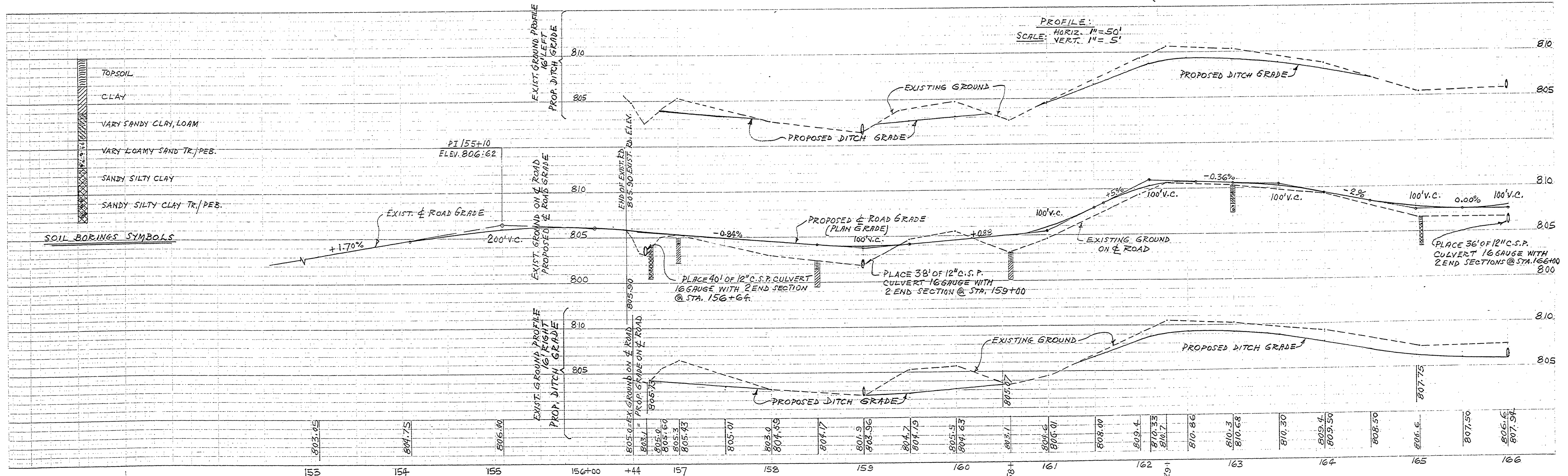


PLAN  
 SCALE: 1" = 50'



TYPICAL ROAD SECTION  
 BETWEEN STA. 156+44 & STA. 207+75; STA. 300+00 & STA. 306+00  
 SCALE: 1/4" = 1'-0" (HORIZ. & VERT.)

NOTE  
 PLACE 3" TOP SOIL AS OBTAINED FROM STRIPPING. SEED FERTILIZE & MULCH ALL CUT & FILL SLOPES, DITCHES AND OTHER AREAS AS DIRECTED BY ENGINEER.



SURVEYED BY R. ROON	8-77	DRAWN BY A.P.	10-77	NO. DATE BY	REVISIONS	NO. DATE BY	REVISIONS	MICHIGAN DEPARTMENT OF NATURAL RESOURCES	PLAN & PROFILE PARK ROAD	SHEET NO. OF FOR PROJECT NO. 24, 1879	SLEEPY HOLLOW STATE PARK ROADS AND PARKING LOTS SHEET 2 OF 8 PLAN NO. E-111
DESIGNED BY A. PETRANICUS	9-77	CHECKED BY	DATE	1.		2.					