

B.M. #102 ELEV. 803.79  
 STA. 169+79 @ 481' E ROAD  
 P.K. NUT & TAG IN S. ROOT 28" MAPLE

T.R.C.P. "C" A 8297.896N  
 10831.610E

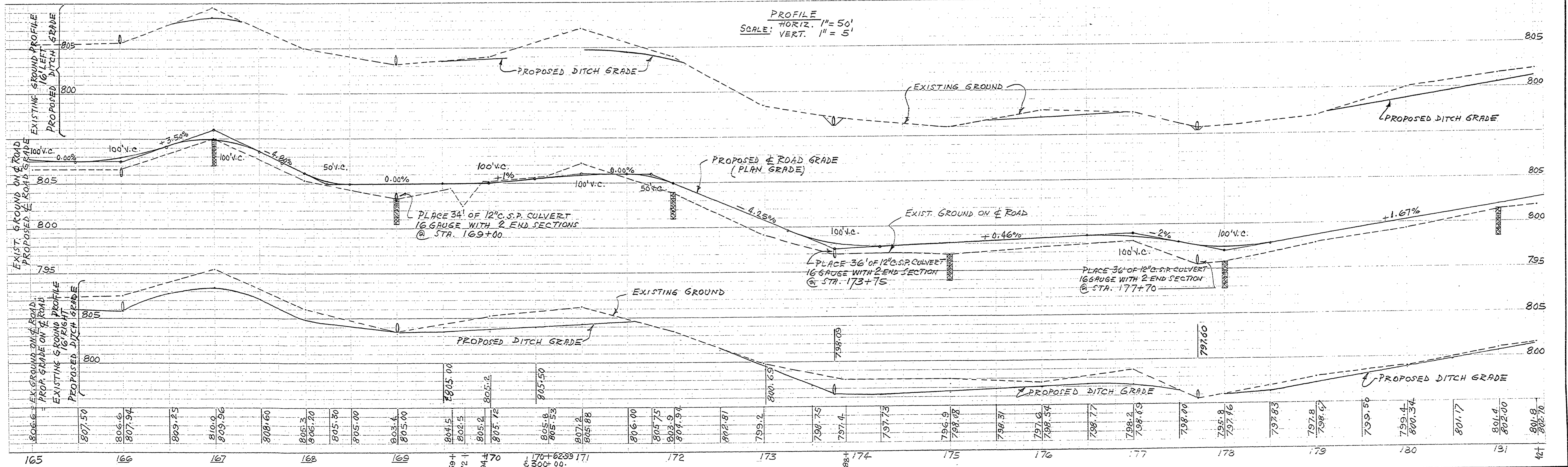
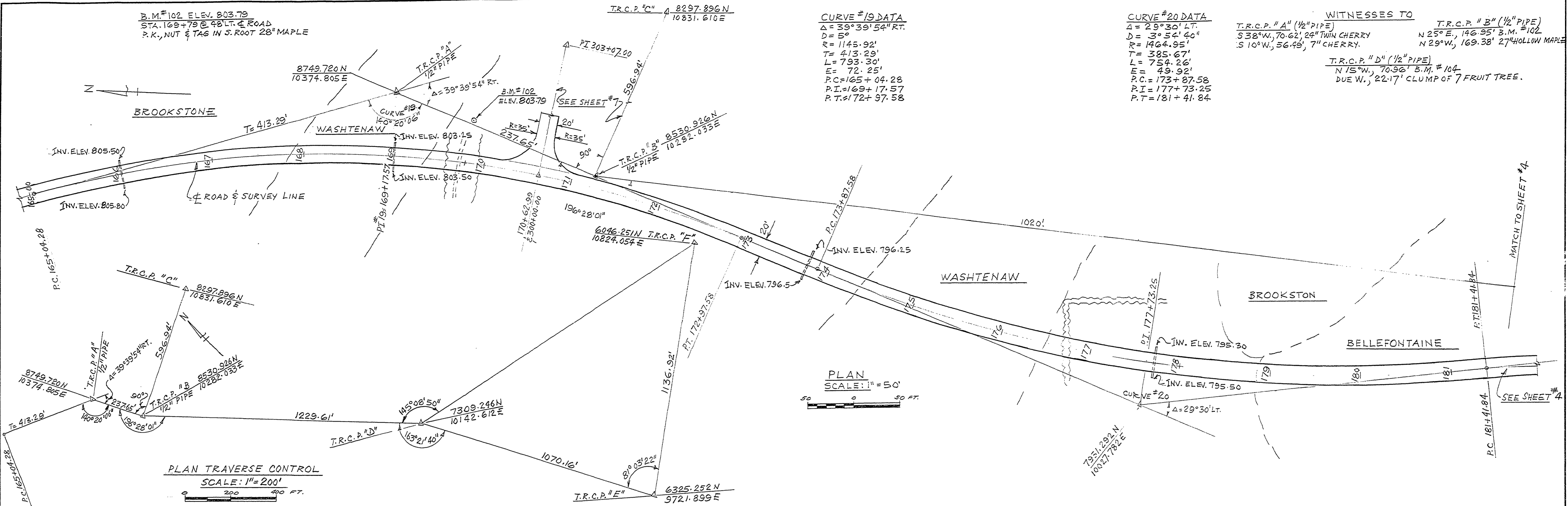
**CURVE #19 DATA**  
 $\Delta = 39^{\circ}39'54''$  RT.  
 $D = 5^{\circ}$   
 $R = 1145.92'$   
 $T = 413.29'$   
 $L = 793.30'$   
 $E = 72.25'$   
 $P.C. = 165+04.28$   
 $P.I. = 169+17.57$   
 $P.T. = 172+97.58$

**CURVE #20 DATA**  
 $\Delta = 29^{\circ}30'$  LT.  
 $D = 3^{\circ}54'40''$   
 $R = 1464.95'$   
 $T = 385.67'$   
 $L = 754.26'$   
 $E = 49.92'$   
 $P.C. = 173+87.58$   
 $P.I. = 177+73.25$   
 $P.T. = 181+41.84$

**WITNESSES TO**  
 T.R.C.P. "A" (1/2" PIPE)  
 S 38° W, 70.62', 24" TWIN CHERRY  
 S 10° W, 56.48', 7" CHERRY.

T.R.C.P. "B" (1/2" PIPE)  
 N 25° E, 146.95' B.M. #102  
 N 29° W, 169.38' 27" HOLLOW MAPLE

T.R.C.P. "D" (1/2" PIPE)  
 N 15° W, 70.96' B.M. #104  
 DUE W., 22.17' CLUMP OF 7 FRUIT TREE.



|                            |      |                |       |     |      |    |           |     |      |    |           |  |                          |                  |  |                |
|----------------------------|------|----------------|-------|-----|------|----|-----------|-----|------|----|-----------|--|--------------------------|------------------|--|----------------|
| SURVEYED BY E. ROON        | 8-77 | DRAWN BY A. P. | 11-77 | NO. | DATE | BY | REVISIONS | NO. | DATE | BY | REVISIONS | MICHIGAN DEPARTMENT OF NATURAL RESOURCES | PLAN & PROFILE PARK ROAD | SHEET NO. 3 OF 8 | SLEEPY HOLLOW STATE PARK ROADS AND PARKING LOTS FOR PROJECT NO. 24, 1879 | PLAN NO. E-111 |
| DESIGNED BY A. PETRAVICIUS | 9-77 | CHECKED BY     |       | 1.  |      |    |           | 3.  |      |    |           |  |                          |                  |  |                |
|                            |      |                |       | 2.  |      |    |           | 4.  |      |    |           |  |                          |                  |  |                |