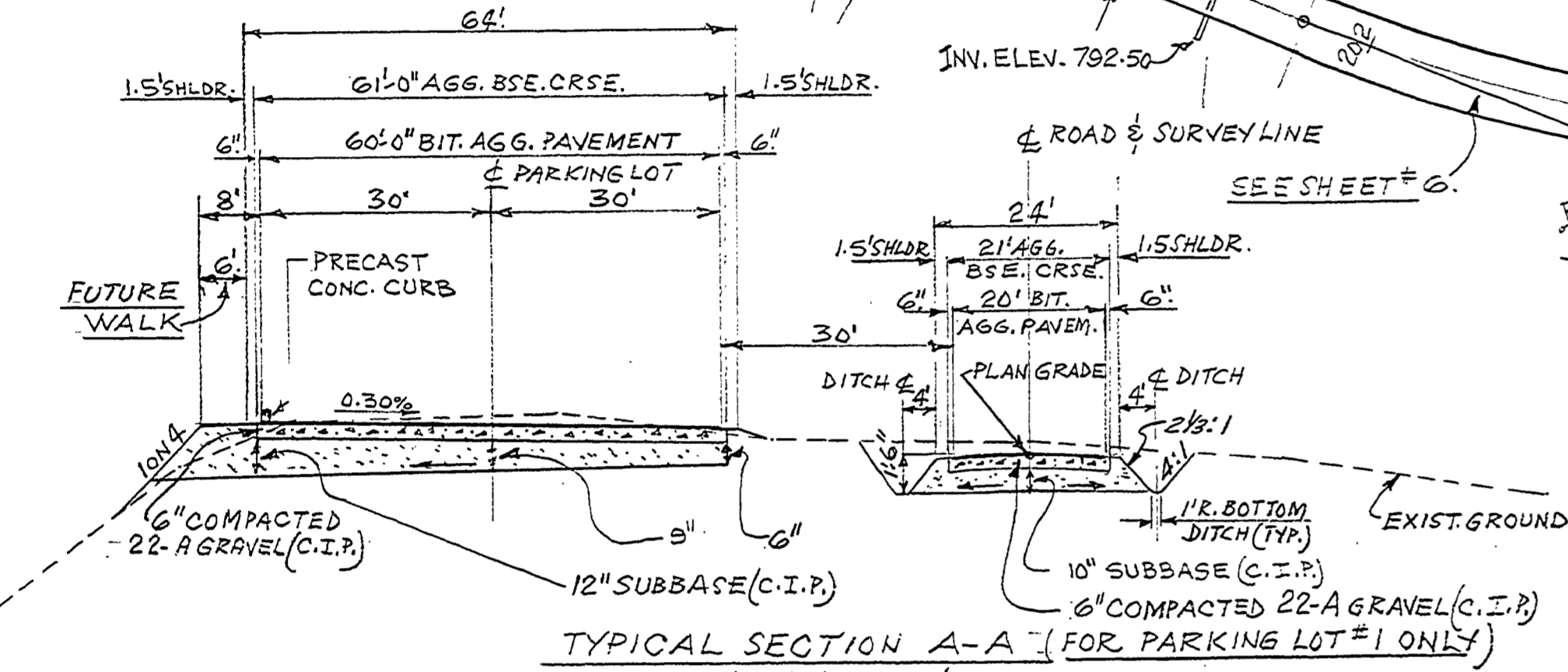
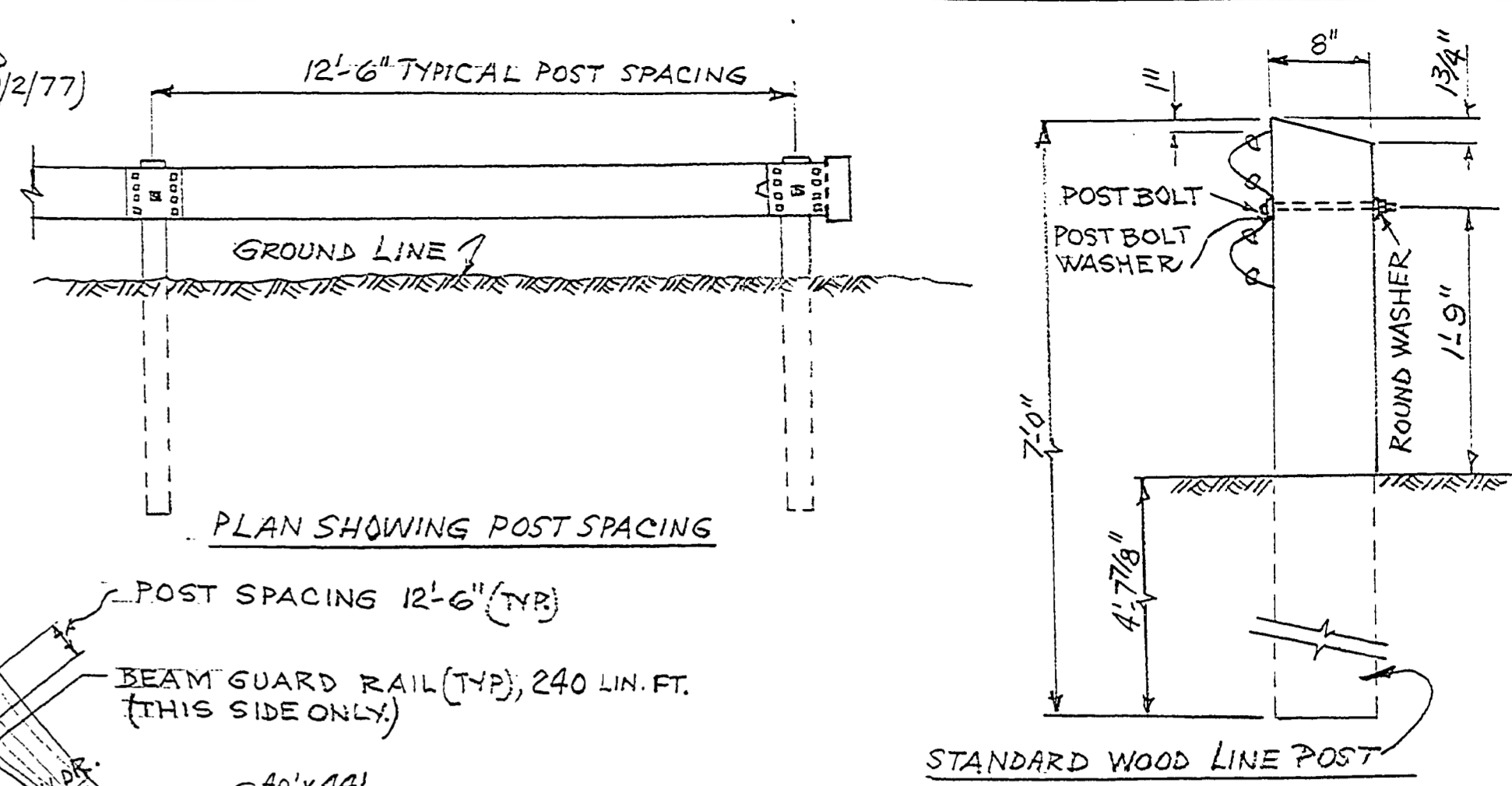
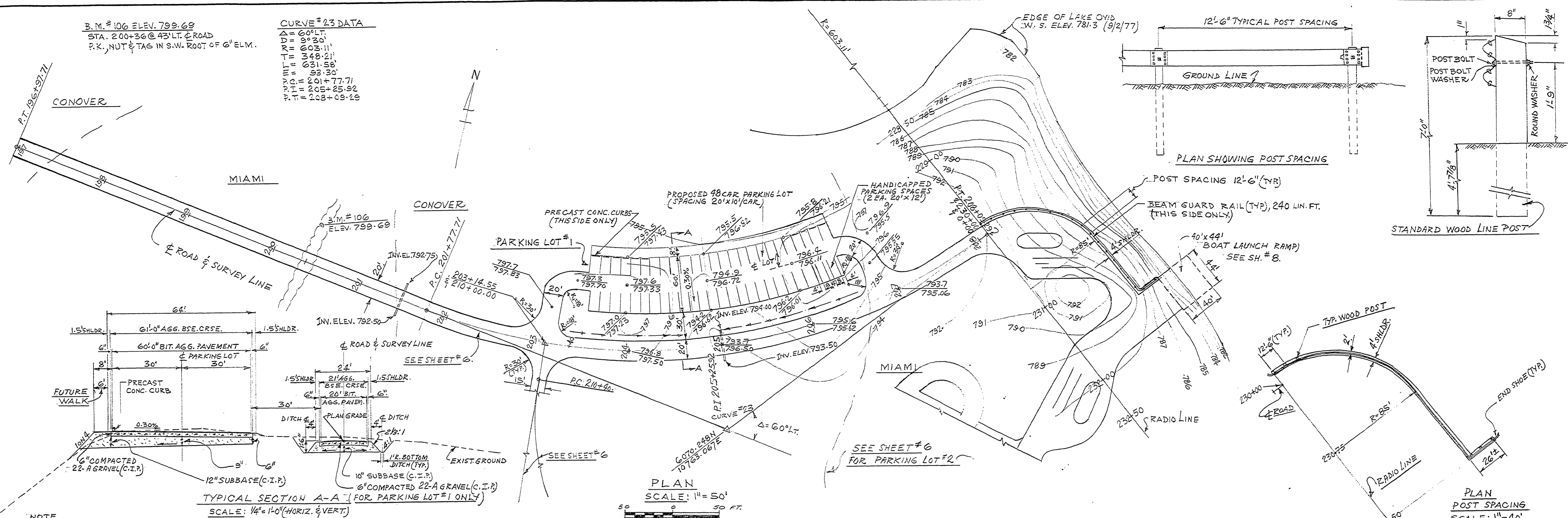
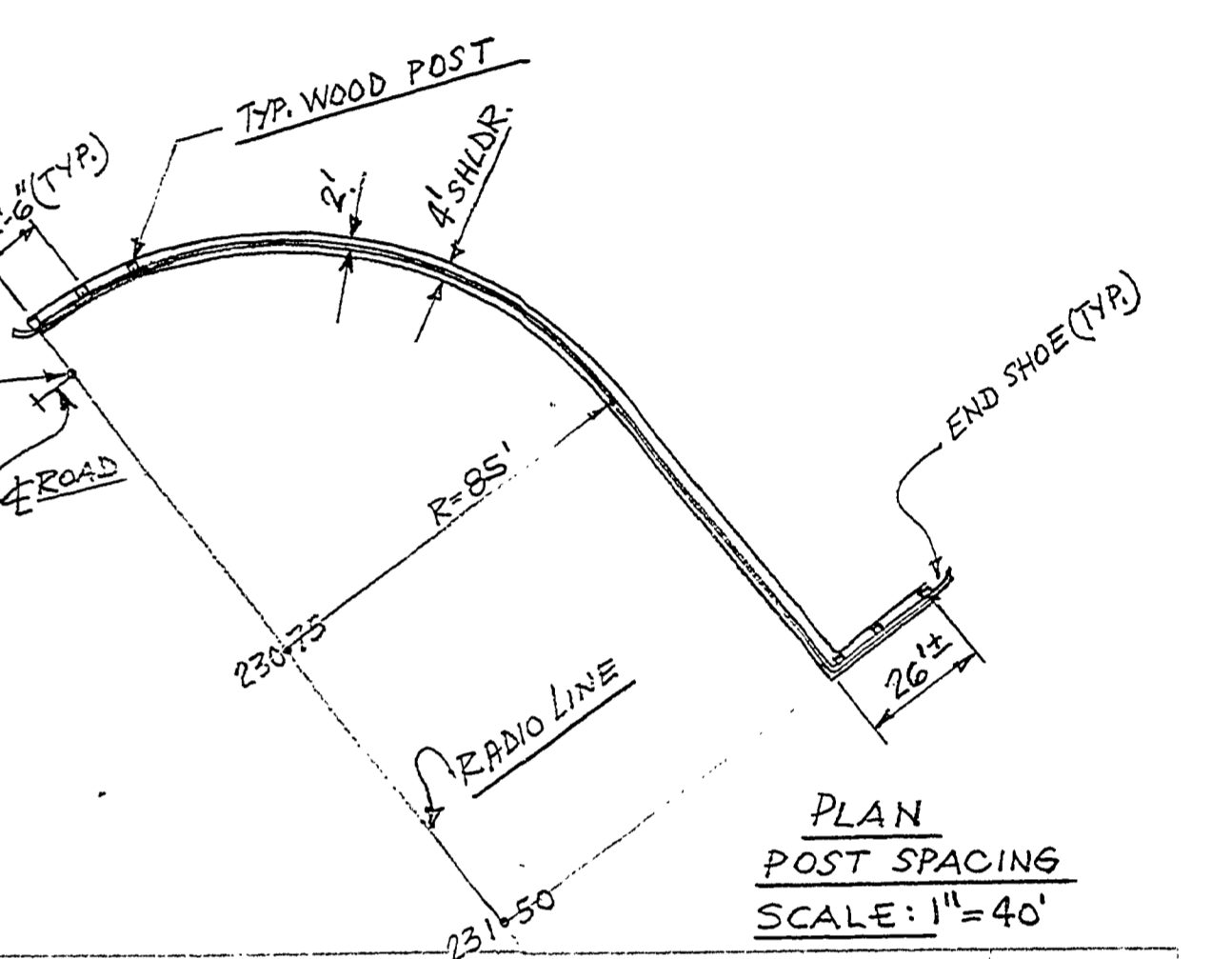


B.M. #106 ELEV. 799.69  
 STA. 200+36 @ 43' LT. OF ROAD  
 P.K., NUT & TAG IN S.W. ROOT OF 6" ELM.

**CURVE #23 DATA**  
 Δ = 60° LT.  
 R = 90.20'  
 T = 54.82'  
 M = 31.58'  
 L = 93.30'  
 PVI = 201+77.71  
 BVC = 205+25.92  
 EVC = 208+09.29



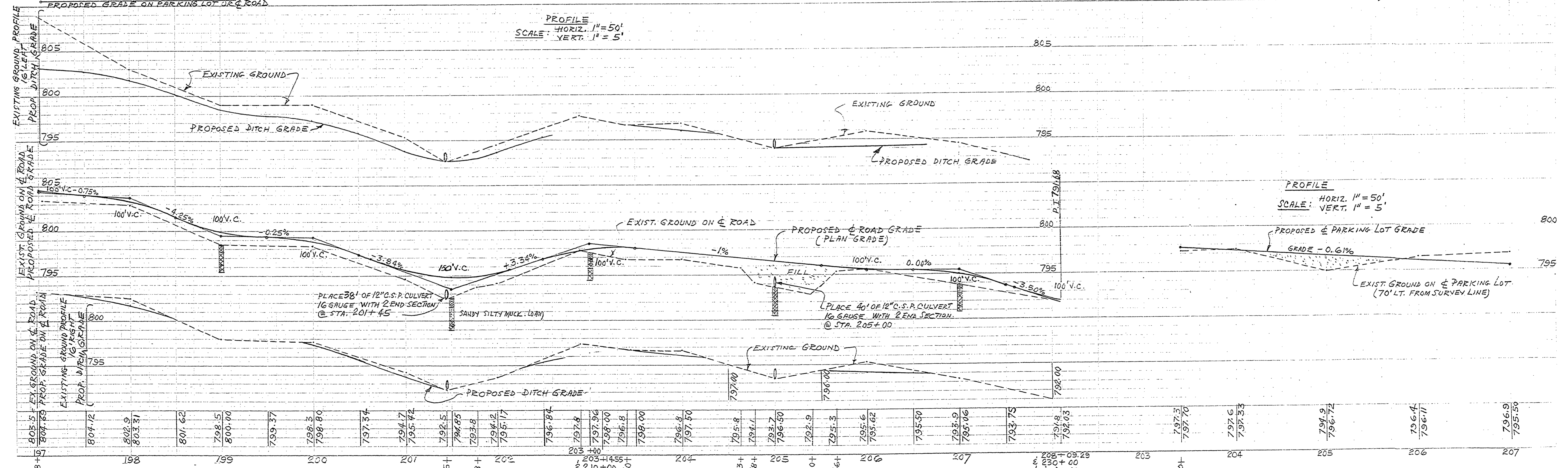
PLAN SCALE: 1" = 50'



PLAN POST SPACING SCALE: 1" = 40'

NOTE: EXISTING GROUND ELEVATION ON PARKING LOT OR ROAD

PROFILE SCALE: HORIZ. 1" = 50', VERT. 1" = 5'



PROFILE SCALE: HORIZ. 1" = 50', VERT. 1" = 5'

SURVEYED BY R. ROON	8-77	DRAWN BY A.P.	11-77	NO. DATE BY	REVISIONS	NO. DATE BY	REVISIONS	MICHIGAN DEPARTMENT OF NATURAL RESOURCES	PLAN & PROFILE PARK ROAD AND PARKING LOT #1	SHEET NO. OF 24, 1879	SLEEPY HOLLOW STATE PARK ROADS AND PARKING LOTS
DESIGNED BY A. PETRAVICIUS	11-77	CHECKED BY	DATE	1.		3.				FOR PROJECT NO. 24, 1879	PLAN NO. E-111