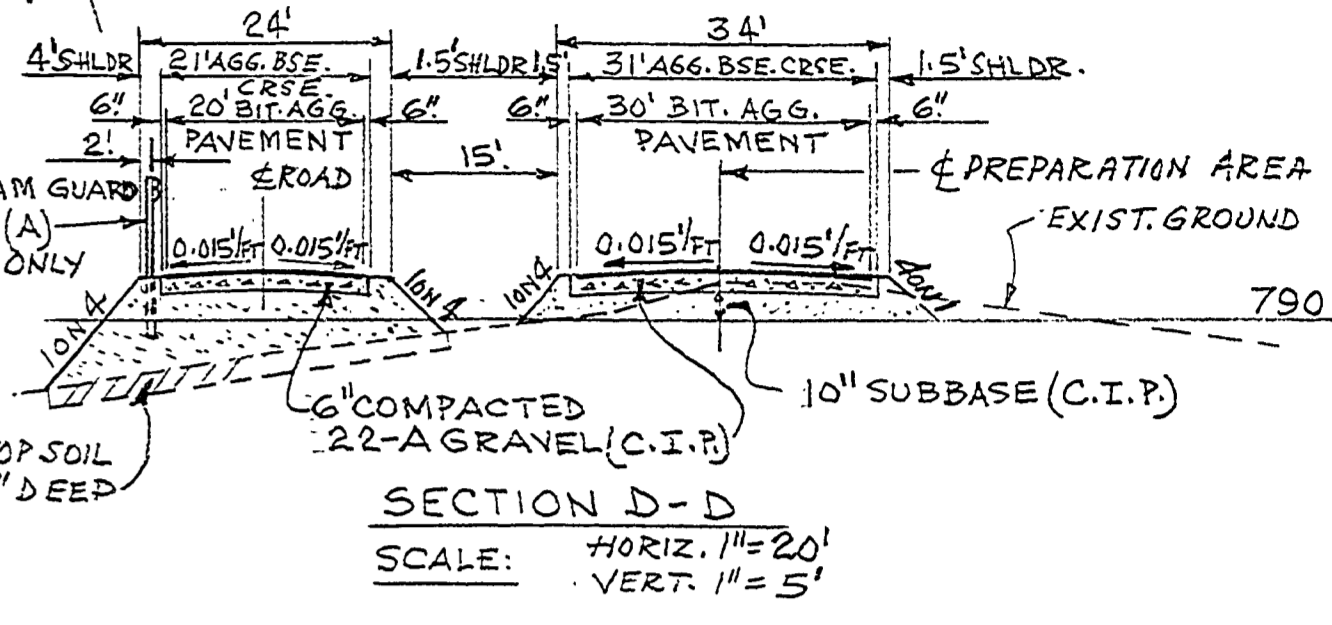
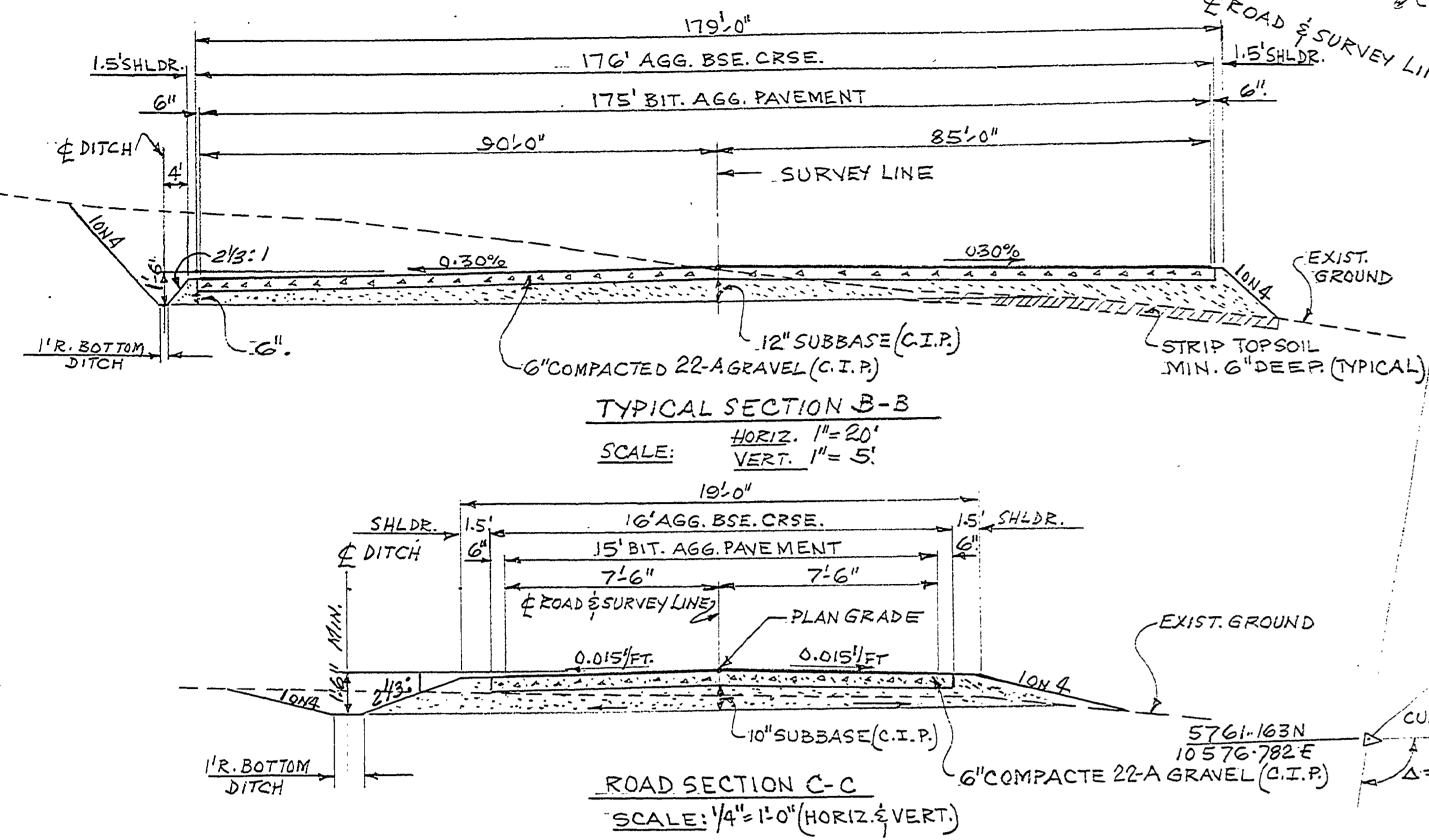
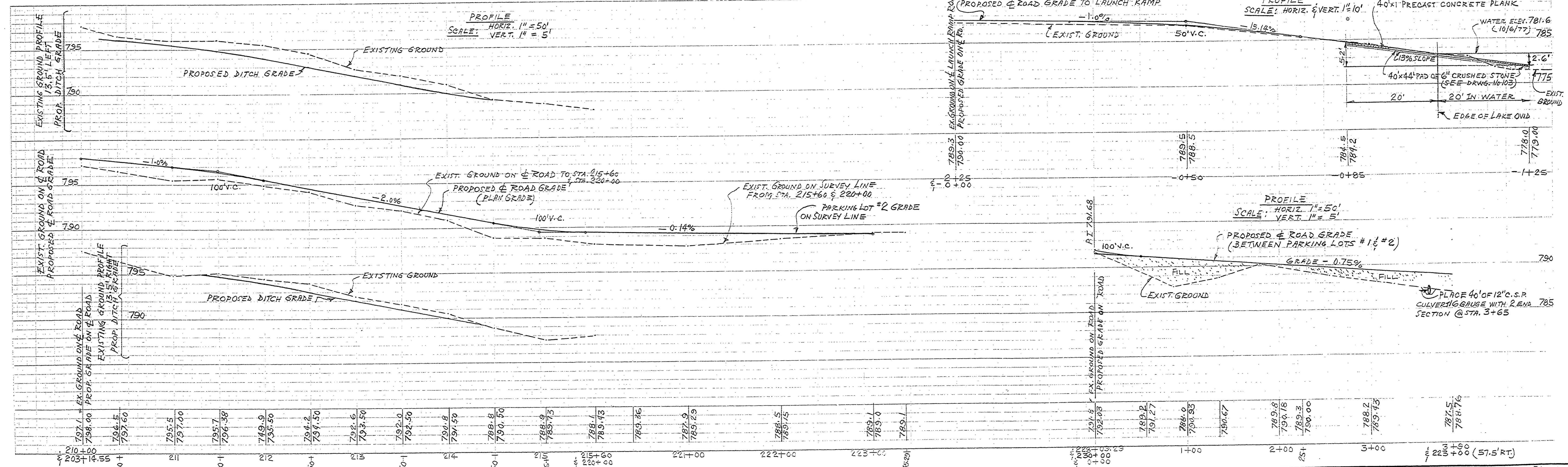


CURVE #24 DATA	CURVE #25 DATA
Δ = 101° LT.	Δ = 38° RT.
D = 21° 40'	D = 11° 20'
R = 264.44'	R = 505.55'
T = 320.79'	T = 174.07'
L = 466.15'	L = 335.29'
E = 151.30'	E = 29.13'
P.C. = 210+40.00	P.C. = 220+00.00
P.I. = 213+60.79	P.I. = 221+74.07
P.T. = 215+06.15	P.T. = 223+35.29



NOTE
 EXISTING GROUND ELEVATION
 PROPOSED GRADE ON PARKING LOT OR ROAD
 ALL PARKING LOTS SHALL BE PAINTED WITH
 4" WIDE STRIPS TO MARK THE PARKING
 SPACES AS INDICATED IN THE PLANS,
 SHEETS #5, 6 & 7.



SURVEYED BY R. ROON	8-77	DRAWN BY A.P.	11-77	NO. DATE BY	REVISIONS	NO. DATE BY	REVISIONS	MICHIGAN DEPARTMENT OF NATURAL RESOURCES	PLAN, PROFILE AND SECTIONS ROAD, PARKING LOT #2 AND LAUNCH RAMP	SHEET NO. OF FOR PROJECT NO. 24.1879	SLEEPY HOLLOW STATE PARK ROADS AND PARKING LOTS SHEET 6 OF 8 PLAN NO. E-111
DESIGNED BY A. PETRANCIUS	11-77	CHECKED BY		1. DATE		3. DATE					
				2. DATE		4. DATE					