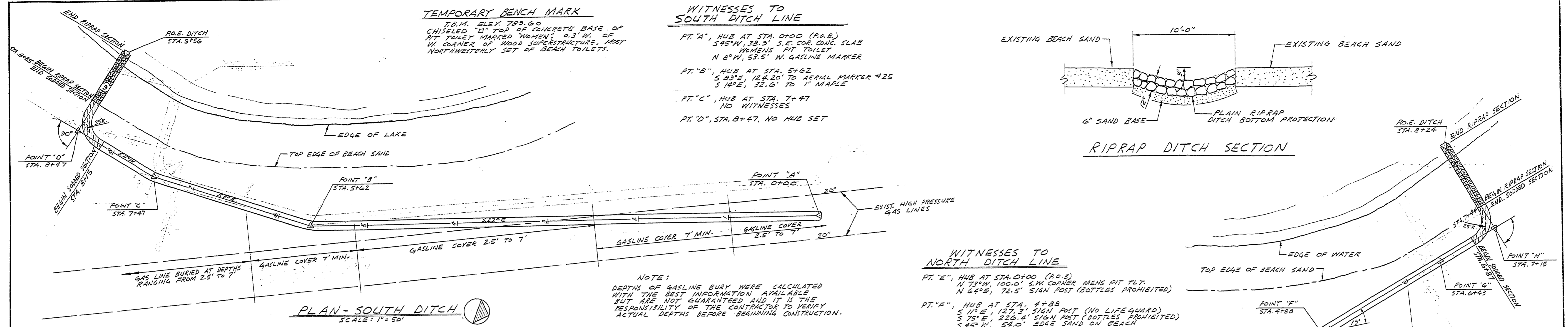
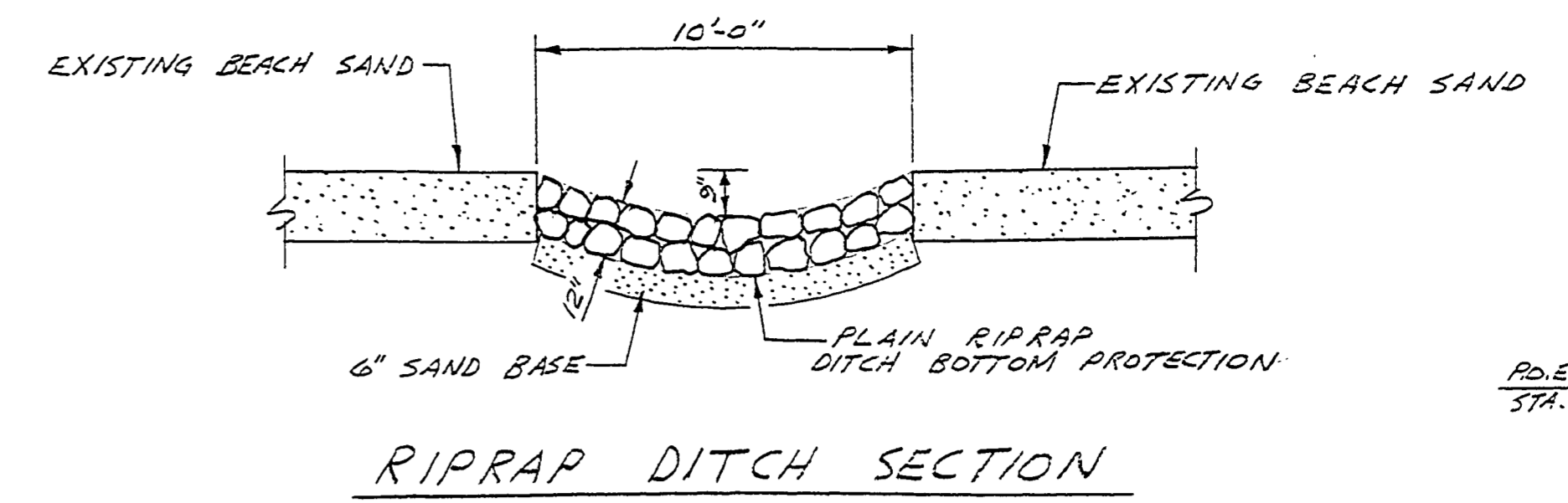
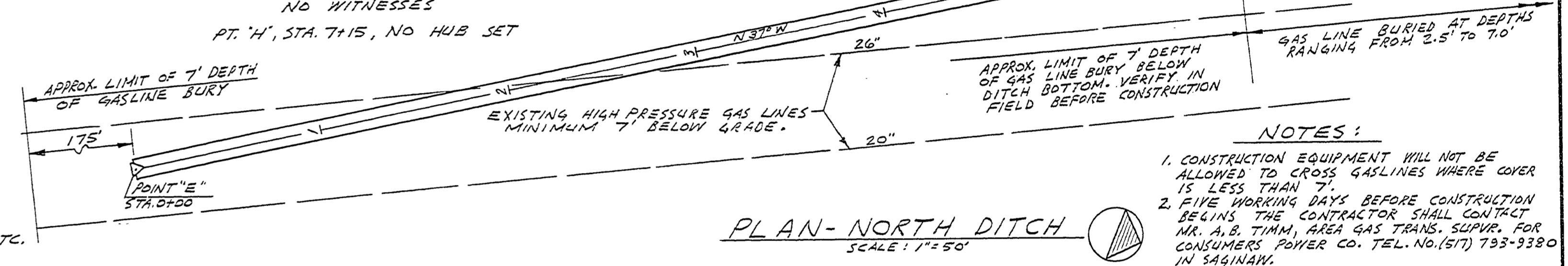


TEMPORARY BENCH MARK
 T.B.M. ELEV. 789.60
 CHISELED "I" TOP OF CONCRETE BASE OF
 PIT TOILET MARKED "WOMEN", 0.3' W. OF
 W. CORNER OF WOOD SUPERSTRUCTURE, MOST
 NORTH-WESTERLY SET OF BEACH TOILETS.

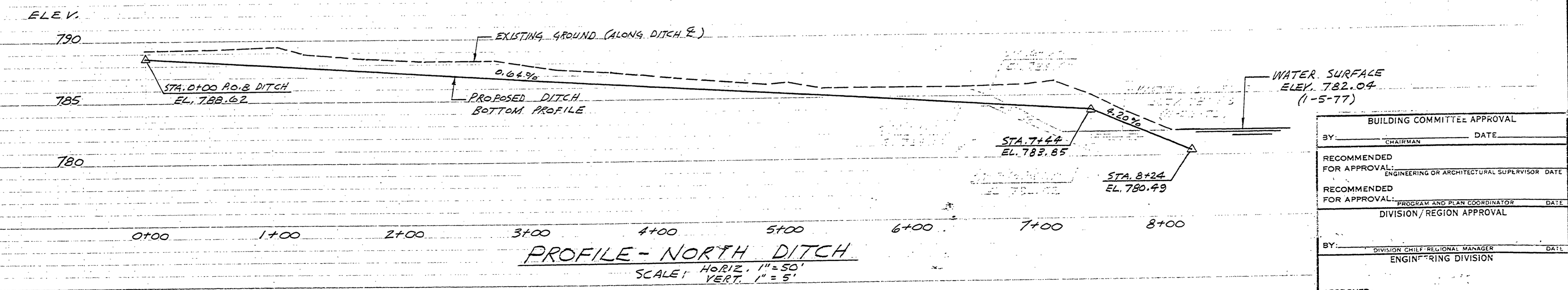
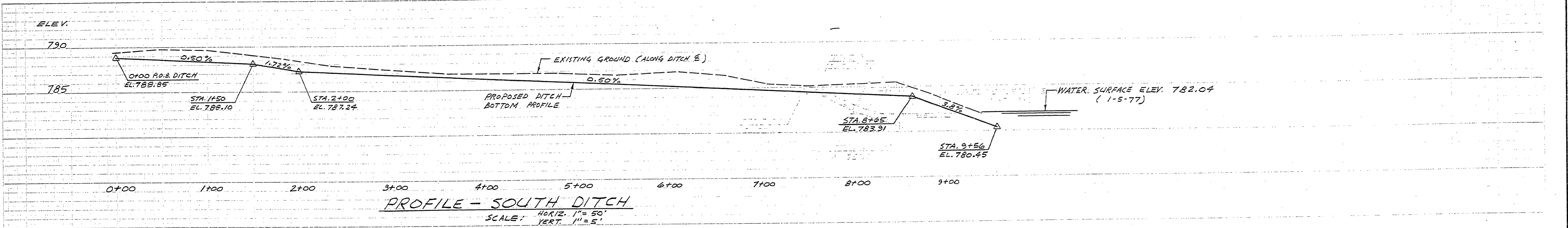
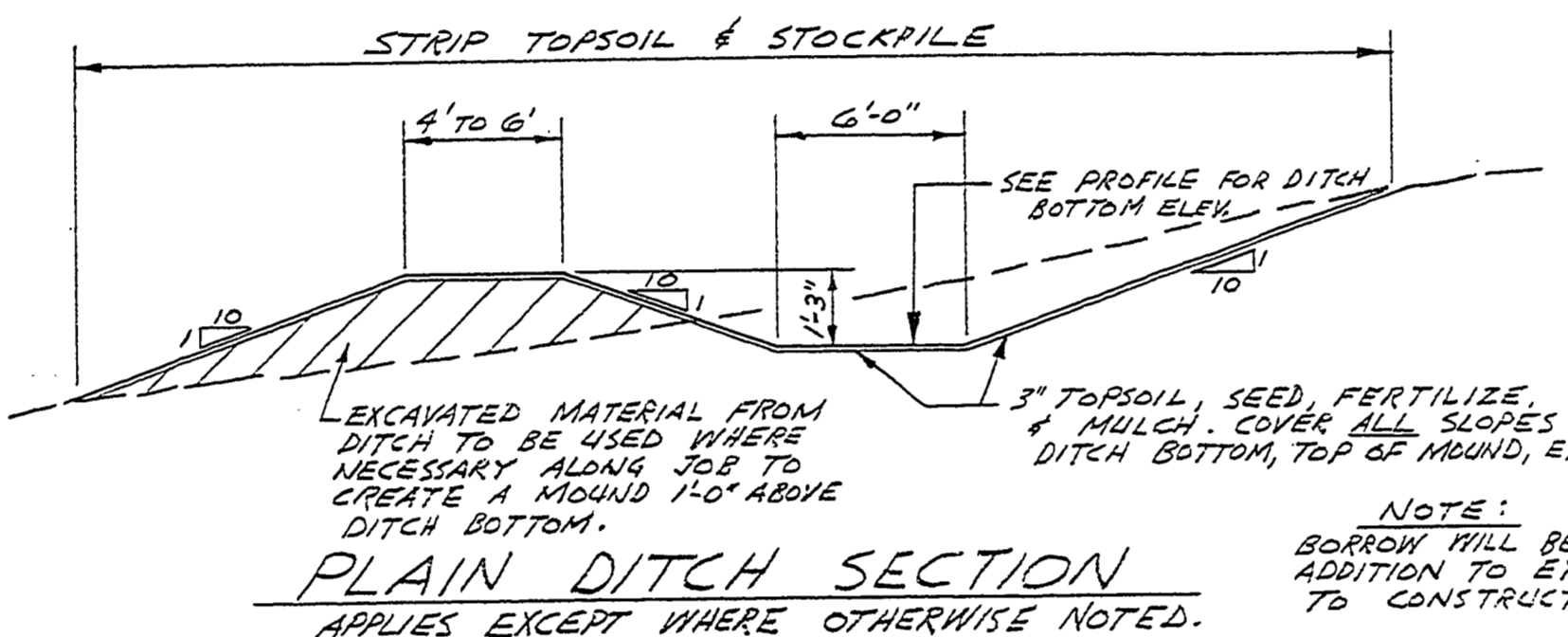
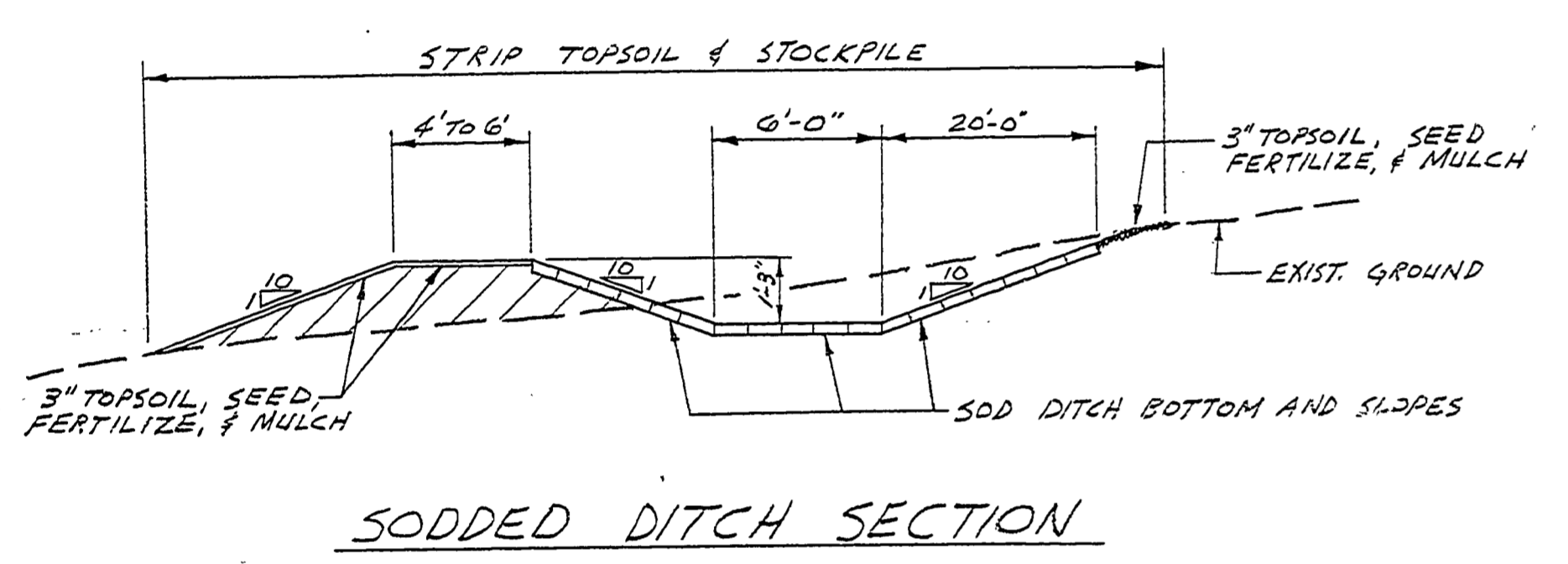
WITNESSES TO SOUTH DITCH LINE
 PT. "A", HUB AT STA. 0+00 (P.O.B.)
 S 45° W, 38.9' S.E. COR. CONC. SLAB
 WOMEN'S PIT TOILET
 N 6° W, 53.5' N. GASLINE MARKER
 PT. "B", HUB AT STA. 5+62
 S 83° E, 124.20' TO AERIAL MARKER #25
 S 14° E, 32.6' TO 1" MAPLE
 PT. "C", HUB AT STA. 7+47
 NO WITNESSES
 PT. "D", STA. 8+47, NO HUB SET



WITNESSES TO NORTH DITCH LINE
 PT. "E", HUB AT STA. 0+00 (P.O.B.)
 N 73° W, 100.0' S.W. CORNER MENS PIT TLT.
 N 64° E, 72.5' SIGN POST (BOTTLES PROHIBITED)
 PT. "F", HUB AT STA. 4+88
 S 11° E, 127.3' SIGN POST (NO LIFE GUARD)
 S 75° E, 226.4' SIGN POST (BOTTLES PROHIBITED)
 S 45° W, 54.0' EDGE SAND ON BEACH
 PT. "G", HUB AT STA. 6+43
 NO WITNESSES
 PT. "H", STA. 7+15, NO HUB SET



- NOTES:**
- CONSTRUCTION EQUIPMENT WILL NOT BE ALLOWED TO CROSS GASLINES WHERE COVER IS LESS THAN 7'.
 - FIVE WORKING DAYS BEFORE CONSTRUCTION BEGINS THE CONTRACTOR SHALL CONTACT MR. A.B. TIMM, AREA GAS TRANS. SUPERV. FOR CONSUMERS POWER CO. TEL. NO. (517) 735-9380 IN SAGINAW.
 - THE CONTRACTOR SHALL CONTACT THE UTILITY COMMUNICATIONS SYSTEM (MISS DIG) 48 HOURS BEFORE STARTING WORK IN THE AREA.



BUILDING COMMITTEE APPROVAL	
BY: _____	DATE: _____
RECOMMENDED FOR APPROVAL: _____ DATE: _____	
RECOMMENDED FOR APPROVAL: _____ DATE: _____	
DIVISION / REGION APPROVAL	
BY: _____	DATE: _____
ENGINEERING DIVISION	
APPROVED: _____	DATE: _____

SURVEYED BY L. THOMPSON	12-76	DRAWN BY B. BOYCE	12-76	NO. 1	DATE	BY	REVISIONS	NO. 3	DATE	BY	REVISIONS
DESIGNED BY R. HAEUSLER	12-76	CHECKED BY	DA1	2.				4.			

MICHIGAN DEPARTMENT OF NATURAL RESOURCES
DRAINAGE DITCHES
 PLAN, PROFILE, & SECTIONS
 SLEEPY HOLLOW STATE PARK
 AREA OR PARK
 BEACH EROSION CONTROL
 PROJECT NO. 24-1846
 SHEET 2 OF 2
 PLAN NO. E-109