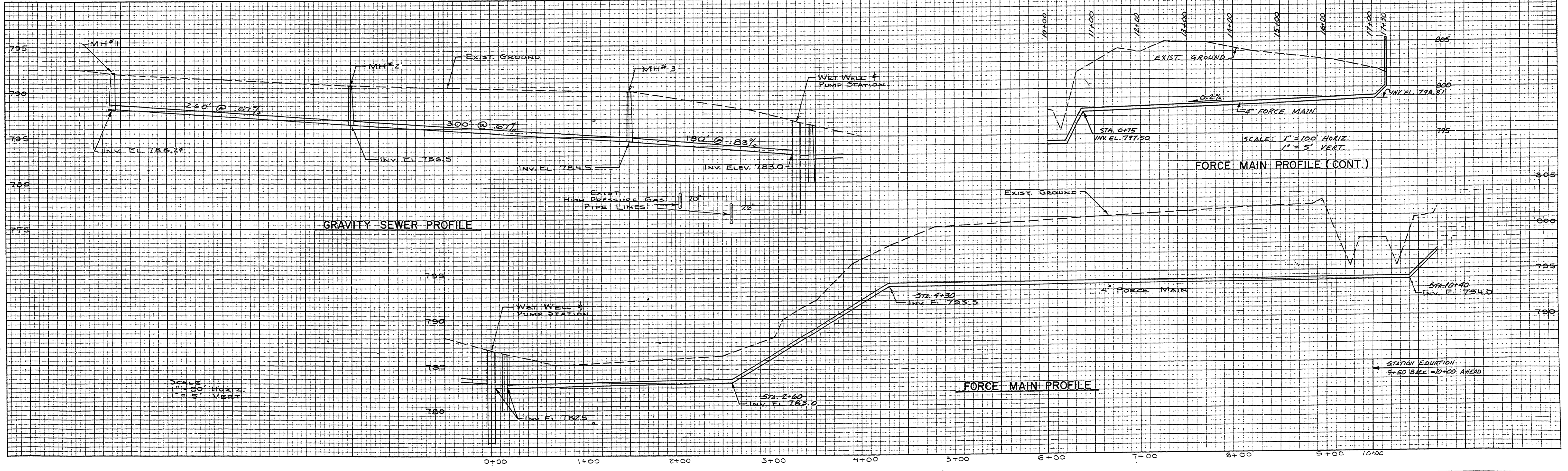
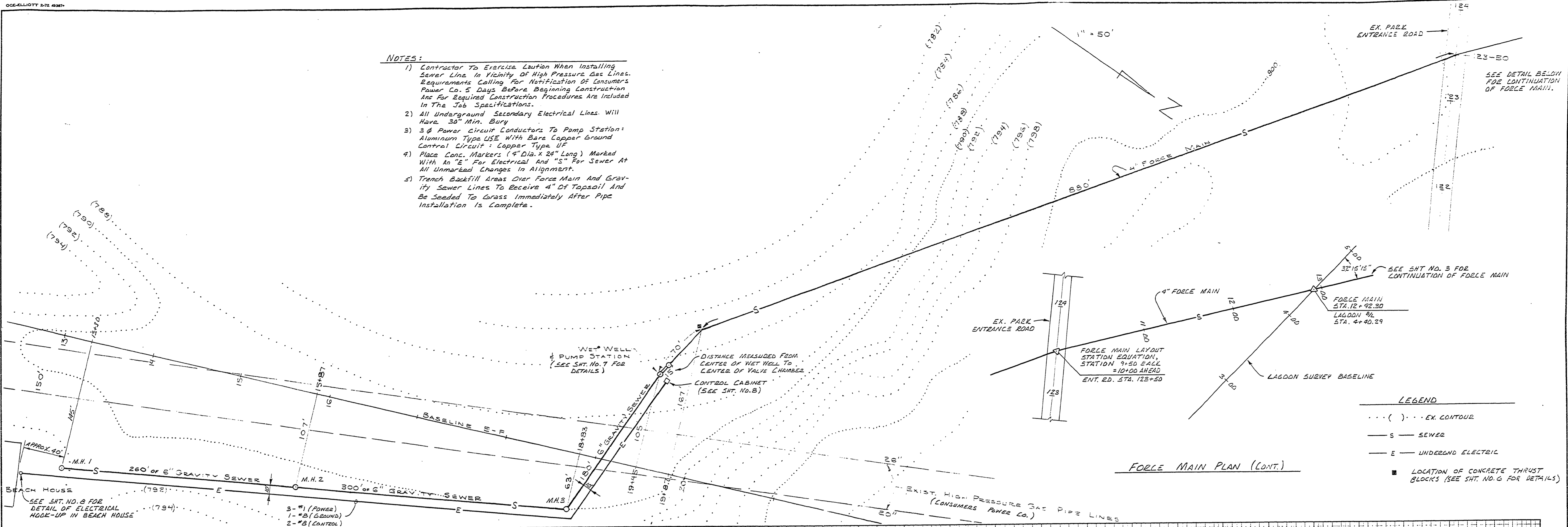


**NOTES:**

- 1) Contractor To Exercise Caution When Installing Sewer Line In Vicinity Of High Pressure Gas Lines. Requirements Calling For Notification Of Consumers Power Co. 5 Days Before Beginning Construction And For Required Construction Procedures Are Included In The Job Specifications.
- 2) All Underground Secondary Electrical Lines Will Have 30" Min. Bury
- 3) 3/4" Power Circuit Conductors To Pump Station: Aluminum Type USE With Bare Copper Ground Control Circuit: Copper Type UF
- 4) Place Conc. Markers (4" Dia. X 24" Long) Marked With An "E" For Electrical And "S" For Sewer At All Unmarked Changes In Alignment.
- 5) Trench Backfill Areas Over Force Main And Gravity Sewer Lines To Receive 4" Of Topsoil And Be Seeded To Grass Immediately After Pipe Installation Is Complete.



SURVEYED BY	DRAWN BY YPML/PJLGETT	3-76	NO.	DATE	BY	REVISIONS	NO.	DATE	BY	REVISIONS	MICHIGAN DEPARTMENT OF NATURAL RESOURCES	SEWER LINE PLAN & PROFILE	SHEET NO. _____ OF _____	SLEEPY HOLLOW STATE PARK
DESIGNED BY A. QURAISHI	7-75	CHECKED BY	1.				3.						FOR PROJECT NO. 21-9342	SHEET 2 OF 10
	DATE		DATE	2.			4.							PLAN NO. E-107