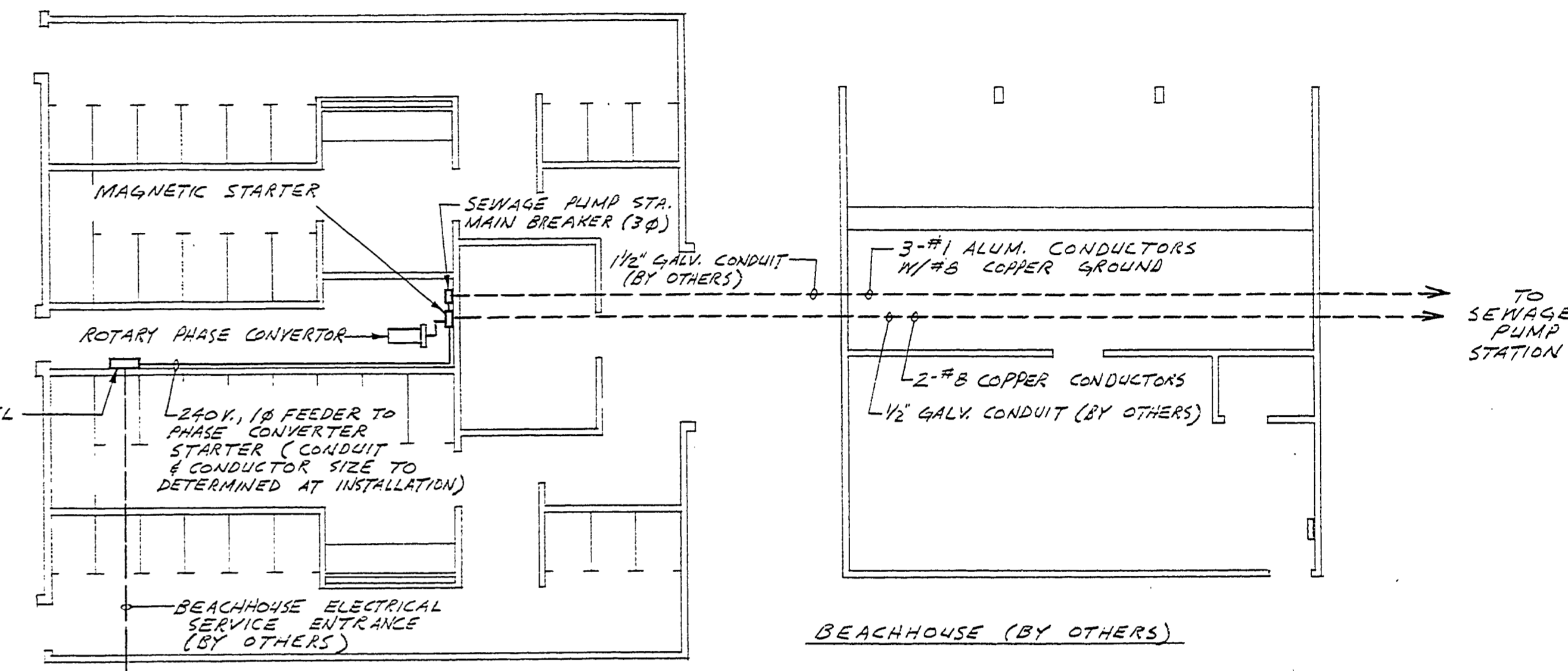
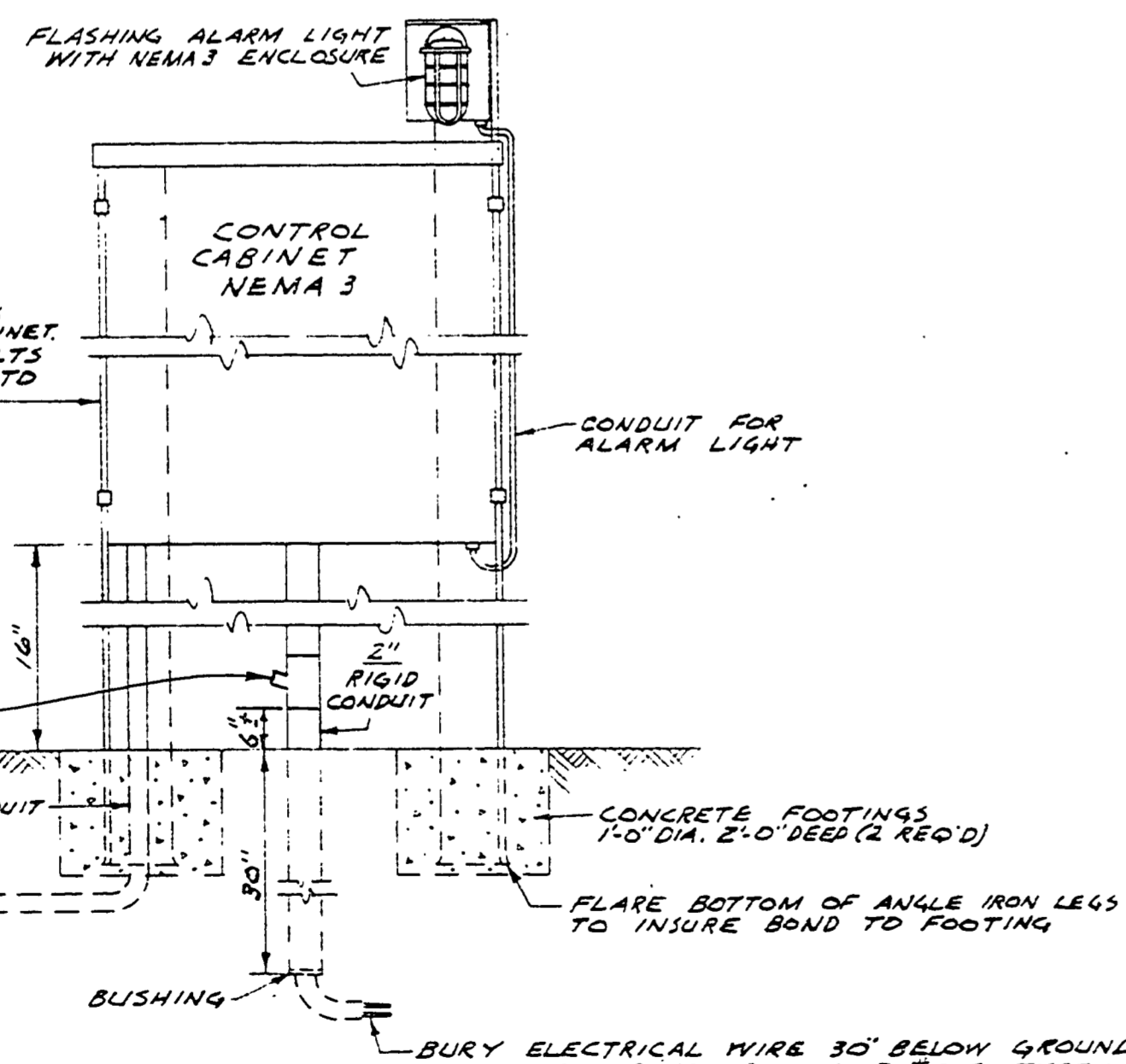


SEWAGE PUMP STATION  
REMOTE MOTOR TERMINAL HOUSING BOX

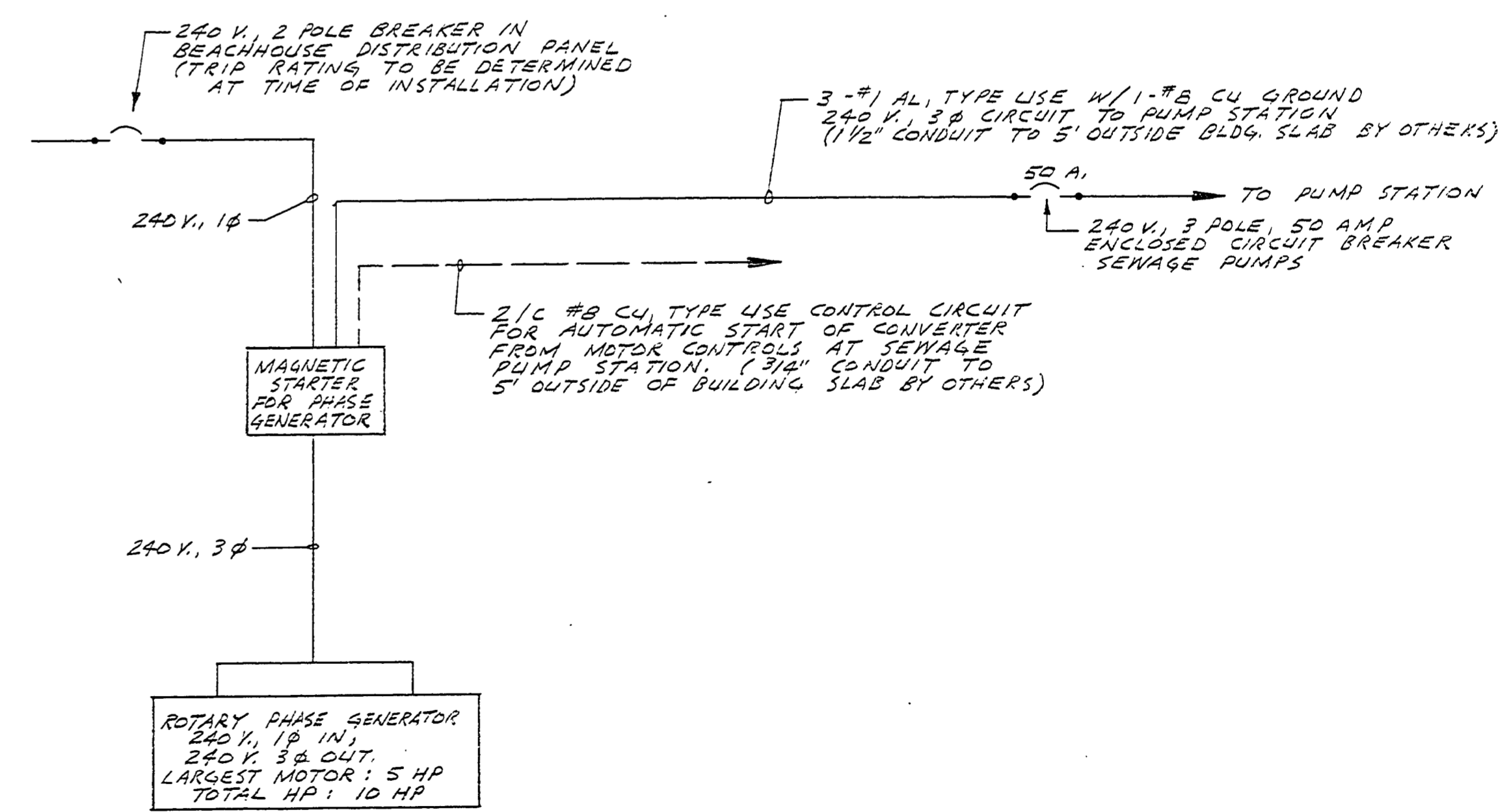
SECTION A-A



LAYOUT OF SEWAGE PUMP ELECTRICAL  
IN BEACHHOUSE



- NOTES
1. LOCATE PANEL BOX 15' FROM WETWELL
  2. ALL ELECTRICAL CONNECTIONS AND MATERIAL TO CONFORM TO THE NATIONAL ELECTRICAL CODE.
  3. REMOTE MOTOR TERMINAL HOUSING SHOULD BE COMPLETELY ASSEMBLED AND SET IN FORM BEFORE TOP OF SLAB IS POURED.
  4. SEAL ALL CONDUIT ENDS BELOW GRADE.



SEWAGE PUMP STATION  
CONTROL CABINET PEDESTAL  
INSTALLATION DETAILS

NOTE: ALL BOXES AND EQUIPMENT GROUNDED TO MEET ELECTRICAL CODE

SURVEYED BY		DRAWN BY B. BOYCE		3-76	NO. DATE BY		REVISIONS		NO. DATE BY		REVISIONS		MICHIGAN DEPARTMENT OF NATURAL RESOURCES		SLEEPY HOLLOW STATE PARK AREA OR PARK		PROJECT NO. 21-9542	
DESIGNED BY A. QURAISHI		3-76		DATE	NO. DATE BY		REVISIONS		NO. DATE BY		REVISIONS		ELECTRICAL DETAILS SHEET TITLE		PROJECT SEWAGE SYSTEM		SHEET 8 OF 10 PLAN NO. E-107	