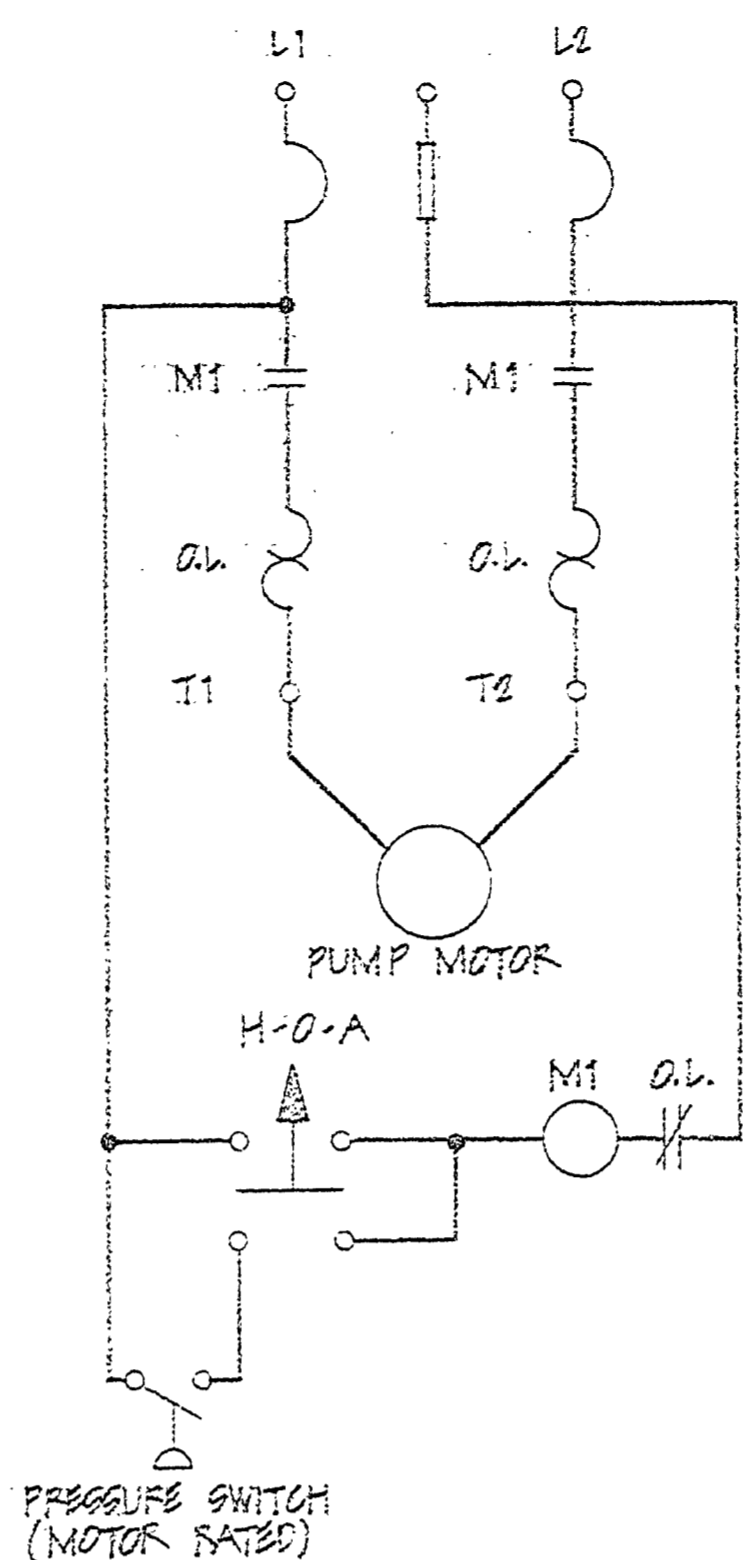
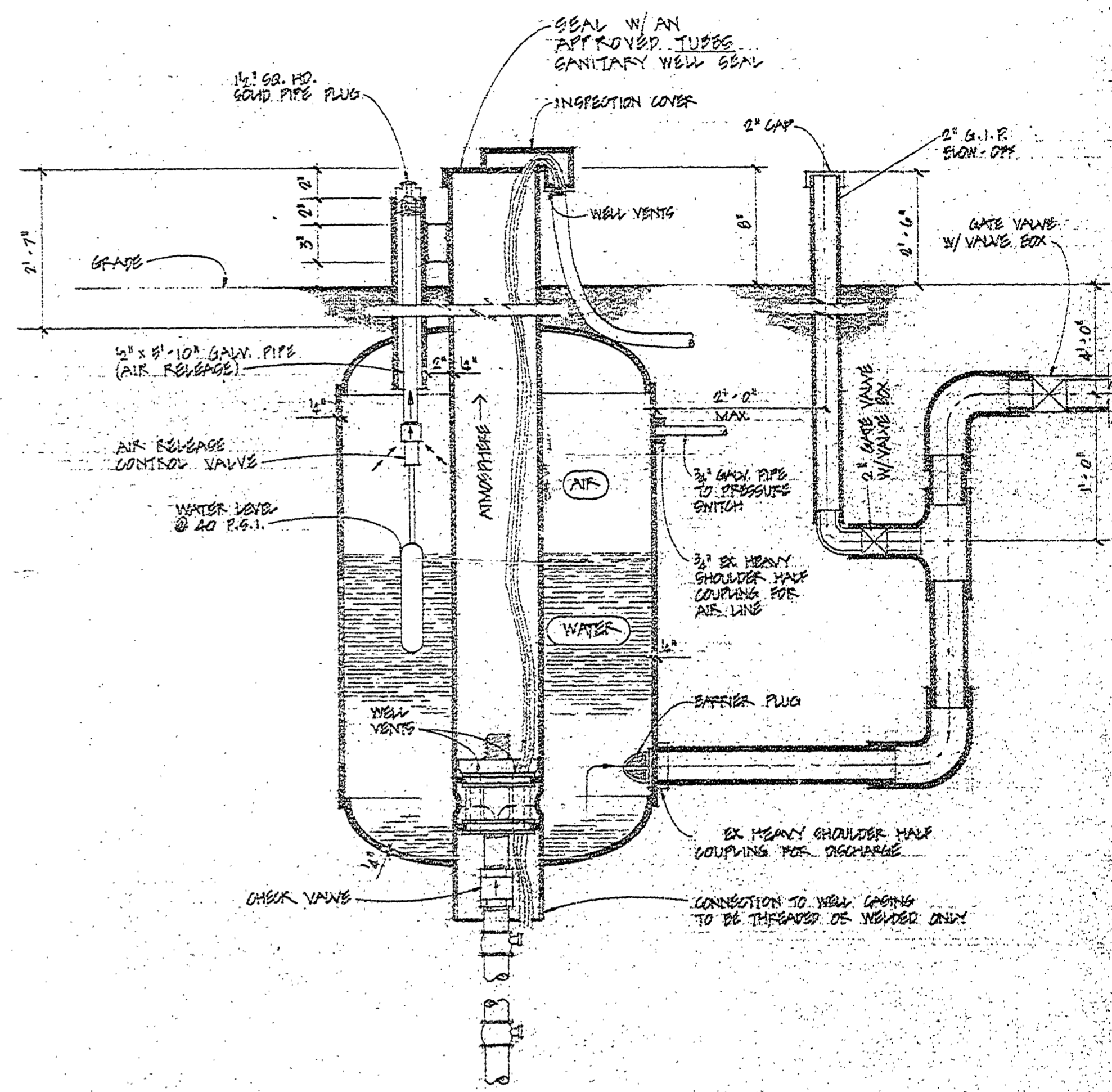


PUMP CONTROL DETAIL



CIRCUIT DIAGRAM



1500 GALLON PITLESS ADAPTER TANK

- NOTES:**
1. PUMP INTAKE SHOULD BE SET @ 120 FT. (1'-0" ABOVE WELL SCREEN.)
 2. PRESSURE SETTING: HIGH: 60 P.S.I. (CUT-OUT) LOW: 40 P.S.I. (CUT-IN)
 3. PUMP: SUBMERSIBLE PUMP TO PRODUCE 70 G.P.M. @ 60 P.S.I. AND 60 FT. DEPTH
 4. POWER: SINGLE PHASE, 230 VOLTS.

NOTE: DIMENSIONS SHOWN SHOULD NOT BE USED FOR CONSTRUCTION. USE SHOP DRAWINGS.

SURVEYED BY	DRAWN BY	NO.	DATE	BY	REVISIONS	NO.	DATE	BY	REVISIONS	MICHIGAN DEPARTMENT OF NATURAL RESOURCES	PITLESS ADAPTER TANK	SLEEPY HOLLOW STATE PARK	PROJECT NO. 21-9536
DESIGNED BY	CHECKED BY	1.				3.					SHEET TITLE	AREA OR PARK	SHEET 14 OF 15
	DATE	DATE				4.						BEACH HOUSE & CONCESSION	PLAN NO. A-121