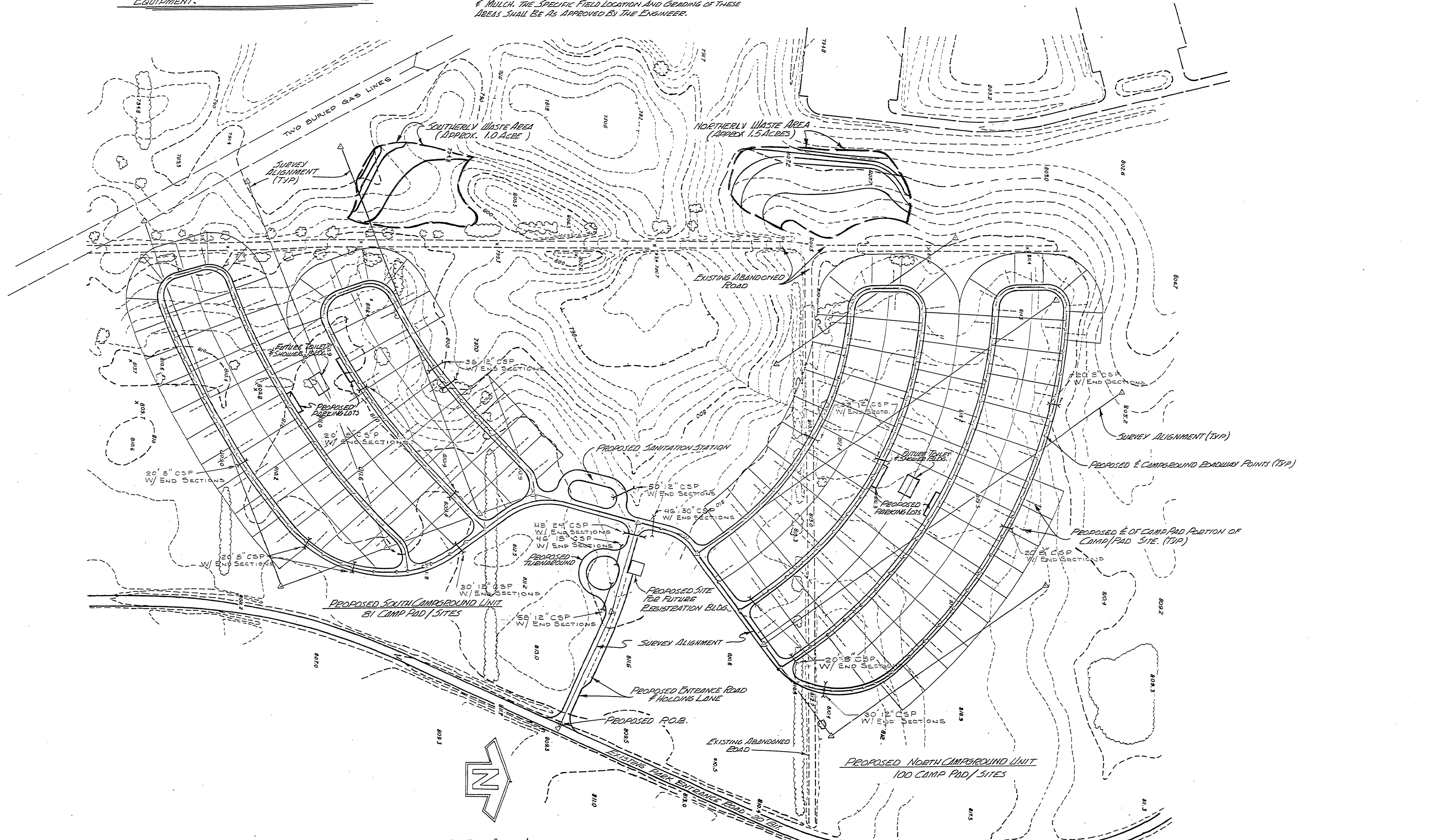


NOTE:
 CONTRACTOR SHALL NOT CROSS, NOR BE WITHIN 50'
 OF THE TWO BURIED GAS LINES WITH ANY CONSTRUCTION
 EQUIPMENT.

THE WASTE AREAS ARE FOR THE UPPER 6" OF STRIPPED MATERIAL,
 INCLUDING EXISTING TOPSOIL & TOP. SEE SPECIFICATIONS FOR
 DISPOSAL OF ALL STUMPS, ROOTS, LOGS, BRUSH, LIMBS TOPS
 AND OTHER DEBRIS RESULTING FROM CLEARING & GRUBBING.
 THE WASTE AREAS SHALL BE GRADED AND SEEDED, FERTILIZED
 & MULCH. THE SPECIFIC FIELD LOCATION AND GRADING OF THESE
 AREAS SHALL BE AS APPROVED BY THE ENGINEER.



SCALE: 1" = 100'
 (2' CONTOUR INTERVAL)

SURVEYED BY	DRAWN BY HENRY T. REED.	NO.	DATE	BY	REVISIONS	NO.	DATE	BY	REVISIONS	MICHIGAN DEPARTMENT OF NATURAL RESOURCES	EX. CONTOURS & GENERAL LAYOUT FOR MODERN CAMPGROUND - 181 SITES	SLEEPY HOLLOW STATE PARK AREA OR PARK MODERN CAMPGROUND DEVELOPMENT PROJECT	PROJECT NO. 24-2587
DESIGNED BY A. EGRES	11-86	1.	8-88	J.Y.	ADDED CMP'S AS BUILT (20)	3.					SHEET TITLE		SHEET 4 OF 19 PLAN NO. E-115
DATE	CHECKED BY	2.				4.							