

PT. #23 3/4" PIPE  
5 58"W, 87.24', 2" MAPLE, SPIKE  
NORTH, 8' E TRAIL.

PT. #24 3/4" PIPE  
N 24"W, 19.20', 4" OAK, SPIKE  
EAST, 23.48', 5" OAK, SPIKE

PT. #25 3/4" PIPE  
N 65"E, 147.19', 2" WALNUT, SPIKE  
N 25"E, 108.44', 14" HICKORY, SPIKE

PT. #26 3/4" PIPE  
N 84"E, 35.59', 20" WALNUT, SPIKE  
N 35"E, 82.68', 10" HICKORY, SPIKE  
N 30"W, 31.82', 13" HICKORY, SPIKE

PT. #27 1/2" PIPE  
5 40"W, 69.90', 10" HICKORY, SPIKE  
N 53"W, 66.47', 15" OAK, RR SPIKE (BM#)

PT. #28 3/4" PIPE  
5 54"W, 67.51', 21" HICKORY, SPIKE  
N 68"W, 60.35', 15" HICKORY, SPIKE

PT. #30 3/4" PIPE  
N 50"W, 144.65', 5" ELM, SPIKE  
NORTH, 87.10', 10" APPLE, SPIKE

PT. #31 1/2" PIPE  
5 81"E, 25.74', 5" THORNAPPLE, SPIKE  
N 79"W, 23.35', 6" THORNAPPLE, SPIKE

PT. #32 3/4" PIPE  
N 38"W, 42.64', 46" OAK, SPIKE  
N 3"E, 28.58', 6" ASH, SPIKE

BM# ELEV. 802.46  
RR SPIKE IN SO. SIDE OF  
16" OAK, 39' LT. STA. 1+85  
LINE 27 TO 28.

BM #20 ELEV. 871.09  
SPIKE, NUT TAG IN SW. FOOT  
OF 24" HICKORY, 106' E. OF  
STA. 9+52 (ENT. RD) 20' E. OF  
EX. UPRON ED.

BM #19 ELEV. 811.75  
RR NUT TAG IN N.W.  
FOOT OF A 5" STACK OAK  
LT. OF STA. 85+00.

PT. #3 3/4" PIPE  
N 57"W, 120.0', 4" OAK, SPIKE  
N 51"W, 35.99', 3" ELM, SPIKE

PT. #4 3/4" PIPE  
N 77"W, 69.83', 5" ELM, SPIKE  
N 50'E, 206.37', 9" HICKORY, SPIKE

PT. #5 3/4" PIPE  
5 76"E, 48.02', 4" WALNUT, SPIKE  
5 11"E, 95.61', 14" ASH, SPIKE

PT. #6 3/4" PIPE  
N 18"W, 118.19', 9" WALNUT, SPIKE  
5 68"W, 54.79', TWIN 10" WALNUT, SPIKE

PT. #9 3/4" PIPE  
N 43"E, 110.48', 4" WALNUT, SPIKE  
N 28"E, 83.96', 5" OAK, SPIKE

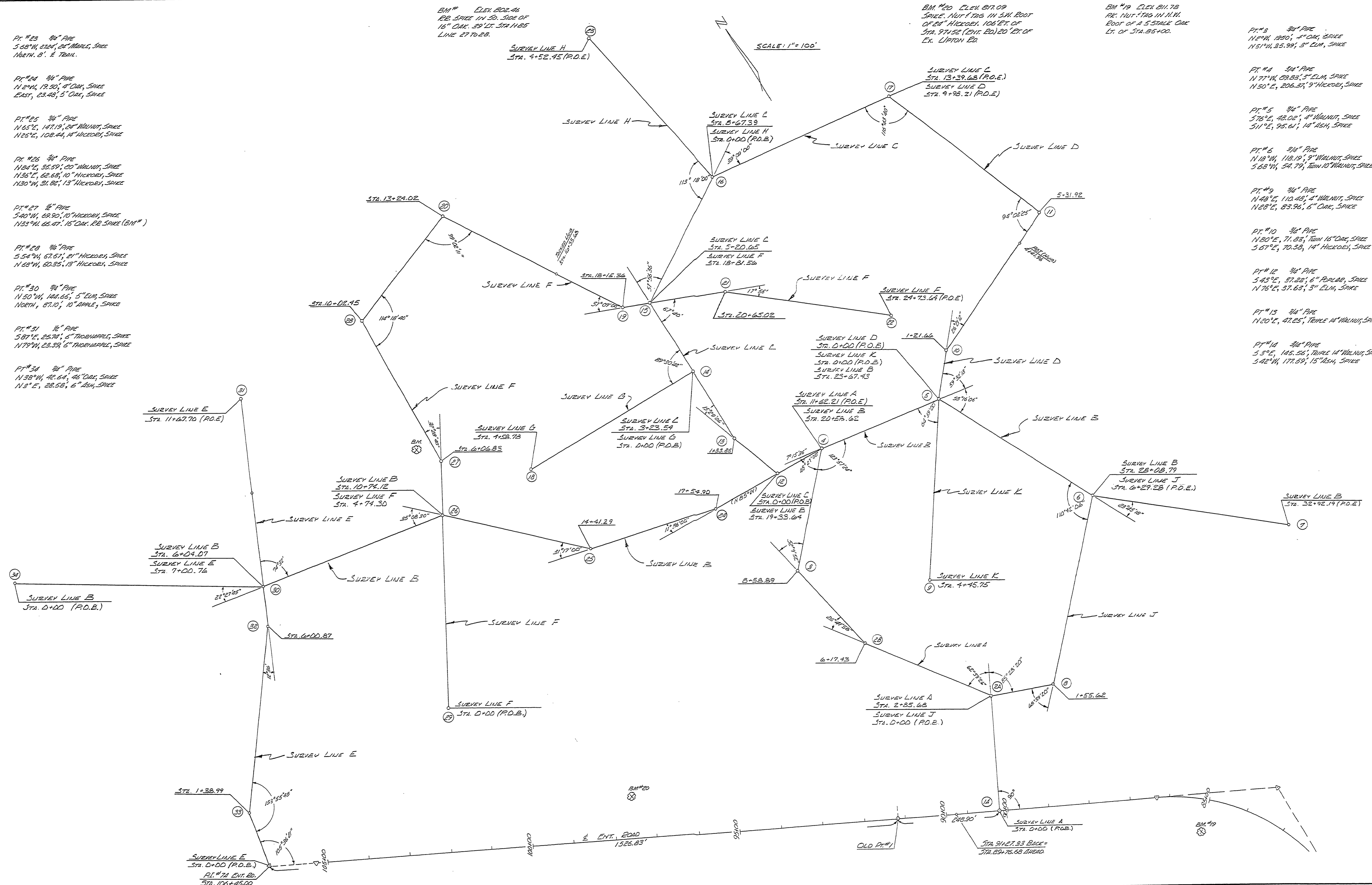
PT. #10 3/4" PIPE  
N 80"E, 71.82', TWIN 18" OAK, SPIKE  
5 67"E, 70.38', 14" HICKORY, SPIKE

PT. #12 3/4" PIPE  
5 43"E, 87.22', 6" POPLAR, SPIKE  
N 76"E, 37.63', 3" ELM, SPIKE

PT. #13 3/4" PIPE  
N 20"E, 47.25', TRIPLE 14" WALNUT, SPIKE

PT. #14 3/4" PIPE  
5 3"E, 145.56', TRIPLE 14" WALNUT, SPIKE  
5 42"W, 171.59', 15" ASH, SPIKE

SCALE: 1" = 100'



SURVEYED BY BISSSELL	2-73	DRAWN BY PADGETT/LEMMON	B-75	NO.	DATE	BY	REVISIONS	NO.	DATE	BY	REVISIONS	MICHIGAN DEPARTMENT OF NATURAL RESOURCES	SLEEPY HOLLOW STATE PARK AREA OR PARK	PROJECT NO. 21-1344
DESIGNED BY Z. HAEUSLER	8-75	CHECKED BY		1.				3.				DEPARTMENT OF NATURAL RESOURCES	LAMPGOUND DEVELOP.	SHEET 2 OF PLAN NO. E-103
				DATE				4.						

SURVEY LAYOUT PLAN

SLEEPY HOLLOW STATE PARK  
AREA OR PARK  
PROJECT  
LAMPGOUND DEVELOP.  
SHEET 2 OF PLAN NO. E-103