

WITNESSES TO SECTION CORNERS

NW. Corner Section 11, T6N, RIW
Set 3/4" iron pipe
N83°W, 28.5', concrete corner post
N89°E, 29.4', 18" Oak
N40°E, 50.4', 22" Oak

N. 1/4 Corner Section 11, T6N, RIW
1/2"x5" iron (grader blade) "X" on top
S3°E, 12.9', 15" Thorn Apple, spike
N90°E, 40.55', 16" Ash, spike

NE. Corner Section 3, T6N, RIW
Set 1/2" iron pipe
S83°E, 178.58', 24" Walnut, spike
S23°E, 72.40', power pole, spike
S41°W, 37.03', fence post, PK. & washer

N. 1/4 Corner Section 34, T7N, RIW
1/2" iron pipe in E Taft rd.
N12°W, 33.65', 30" Oak, PK. & washer
S5°W, 49.18', 12" Twin Oak, PK. & washer

SE. Corner Section 34, T7N, RIW
Set 1/2" pipe
S83°E, 158.19', 24" Walnut, spike
S7°E, 66.13', power pole, spike
S58°W, 52.20', fence post, PK. & washer

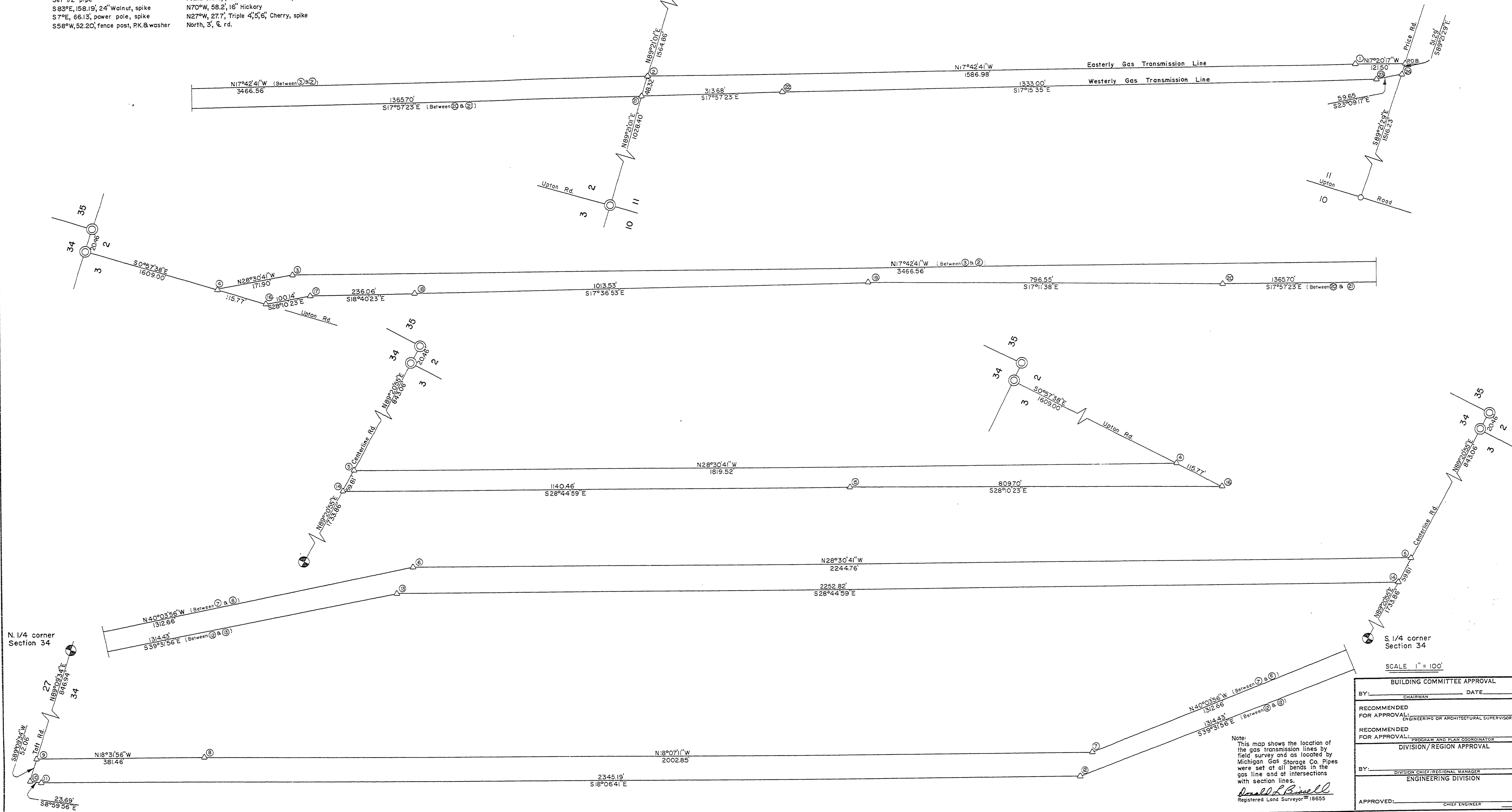
S. 1/4 Corner Section 34, T7N, RIW
Found stone, placed metal & crockery around
N70°W, 58.2', 16" Hickory
N27°W, 27.7', Triple 4", 5", 6" Cherry, spike
North, 3', E rd.

- ① West Gas Line at N. line Section 11
N84°W, 21.7', 10" Hickory, spike
S84°E, 88.46', Twin 14" Oak, spike
- ② West Gas Line 1/2" pipe
S19°E, 33.8', GLMP-WL
S51°E, 67.8', GLMP-EL
- ③ West Gas Line 1/2" pipe
S27°E, 24.6', GLMP-WL
S68°E, 72.6', GLMP-EL
- ④ West Gas Line at Price rd.
N4°W, 35.7', GLMP-WL
N57°E, 55.9', GLMP-EL
- ⑤ East Gas Line at Price rd.
N6°W, 33.6', GLMP-EL
N56°W, 70.7', GLMP-WL
- ⑥ East Gas Line 1/2" pipe
S71°W, 52.8', GLMP-WL
N25°W, 109.3', GLMP-EL
- ⑦ East Gas Line at E. line Section 3
East, 6.0' E Upton rd.
S26°E, 62.7', GLMP-EL
N47°E, 64.69', 4" Elm, spike
- ⑧ East Gas Line 1/2" pipe
N87°W, 70.13', 10" Hickory, spike
S78°E, 40.34', Twin 14" Oak, spike
- ⑨ East Gas Line 1/2" pipe
S74°W, 58.4', GLMP-WL
- ⑩ East Gas Line 3/4" pipe
S81°E, 123.52', Thorn Apple clump, spike
N50°E, 155.99', 12" Hickory, spike
- ⑪ West Gas Line 1/2" pipe
N73°E, 6.9', GLMP-WL
N2°W, 49.6', GLMP-WL
- ⑫ West Gas Line 3/4" pipe
S40°W, 7.23', 3" Walnut, spike
S75°W, 28.60', 5" Thorn Apple, spike
- ⑬ West Gas Line 1/2" pipe
N8°W, 90.14', 20" Oak, spike
N63°W, 54.50', Twin 5" Oak, spike
North, 2.05', Fence line
- ⑭ West Gas Line at N. line Section 3
S34°E, 35.8', GLMP-WL
S32°W, 53.15', 30" Oak, spike
- ⑮ West Gas Line 1/2" pipe
N2°W, 54.5', GLMP-WL
N5°W, 150.9', GLMP-EL
- ⑯ West Gas Line 1/2" pipe
S82°W, 91.40', 17" Walnut, spike
S35°W, 152.25', 17" Walnut, spike
- ⑰ West Gas Line at E. line Section 3
S29°E, 45.7', GLMP-WL
N26°E, 68.5', GLMP-EL
East, 6.0' E Upton rd.
- ⑱ West Gas Line 1/2" pipe
N86°E, 48.4', GLMP-EL
S40°E, 4.5', GLMP-WL
- ⑳ West Gas Line 1/2" pipe
N55°W, 75.27', 22" Hickory, spike
S82°E, 3.4', GLMP-WL
South, 14', E rd. to campground

WITNESSES TO D.N.R. SURVEY POINTS

LEGEND

GLMP-EL - Gas Line Marker Pipe - East Line
GLMP-WL - Gas Line Marker Pipe - West Line



Note: This map shows the location of the gas transmission lines by field survey and as located by Michigan Gas Storage Co. Pipes were set at all bands in the gas line and at intersections with section lines.

Donald L. Bisell
Registered Land Surveyor #18655

SCALE 1" = 100'

BUILDING COMMITTEE APPROVAL

BY: _____ DATE: _____

RECOMMENDED FOR APPROVAL: _____ ENGINEERING OR ARCHITECTURAL SUPERVISOR DATE: _____

RECOMMENDED FOR APPROVAL: _____ PROGRAM AND PLAN COORDINATOR DATE: _____

DIVISION/REGION APPROVAL

BY: _____ DATE: _____

DIVISION CHIEF/REGIONAL MANAGER

ENGINEERING DIVISION

APPROVED: _____ CHIEF ENGINEER DATE: _____

PROJECT NO. 21-9554

SHEET 1 OF 1 PLAN NO. E-102

SURVEYED BY: <i>Donald L. Bisell</i> Registered Land Surveyor	10/73	DRAWN BY: <i>G. Taylor</i>	11-13-73	NO.	DATE	BY	REVISIONS	MICHIGAN DEPARTMENT OF NATURAL RESOURCES	GAS TRANSMISSION LINE MAP	Sleepy Hollow State Park AREA OR PARK	PROJECT NO. 21-9554
				1.							
DESIGNED BY:	DATE:	CHECKED BY:	DATE:	2.							