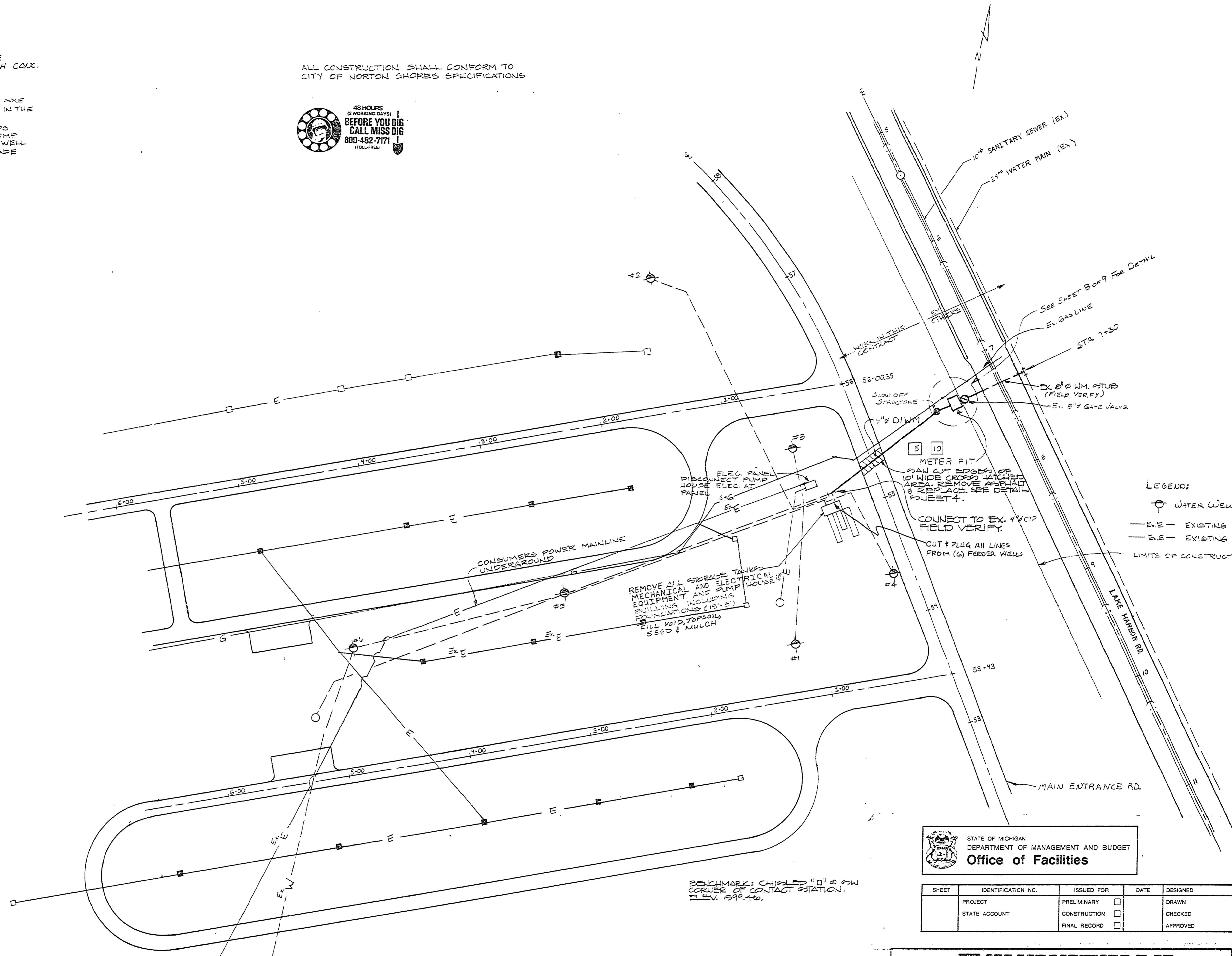


NOTES:

1. ALL WELLS ARE FITLESS ADAPTER TYPE. PULL FITLESS ADAPTERS AND FILL WITH CONC. CONC. IS TO REMAIN 6" BELOW GRADE. (6 REQUIRED)
2. ABOVE & BELOW GROUND ELEC. & GAS ARE SHOWN AS REFERENCE ONLY. LOCATIONS ARE APPROX. ONLY. PARK MANAGER WILL ADVISE IN THE LOCATION OF SUCH UTILITIES.
3. DISCONNECT ELEC. SUPPLY FOR WELL PUMPS AT MAIN BREAKER PANEL AS WELL AS PUMP HOUSE ELEC. REMOVE SWITCH BOX AT WELL SITES & POSTS. CUT WIRES 6" BELOW GRADE AND ABANDON

ALL CONSTRUCTION SHALL CONFORM TO CITY OF NORTON SHORES SPECIFICATIONS



LEGEND:
 ○ WATER WELL TO BE REMOVED
 -E-E- EXISTING ELEC.
 -G-G- EXISTING GAS
 --- LIMITS OF CONSTRUCTION

STATE OF MICHIGAN
 DEPARTMENT OF MANAGEMENT AND BUDGET
Office of Facilities

SHEET	IDENTIFICATION NO.	ISSUED FOR	DATE	DESIGNED
PROJECT	STATE ACCOUNT	PRELIMINARY	<input type="checkbox"/>	DRAWN
		CONSTRUCTION	<input type="checkbox"/>	CHECKED
		FINAL RECORD	<input type="checkbox"/>	APPROVED

CHRISTMAN
 CONSTRUCTION SERVICES
 CONSTRUCTION MANAGERS • GENERAL CONTRACTORS • CONSTRUCTION ENGINEERS • CONSTRUCTORS

Main Office: 400 Kalamazoo Plaza Lansing Michigan 48933 PO Box 14120 48901 Phone 517/482 1488
 Flint Office: 2312 W. Bristol Road Flint Michigan 48907 PO Box 248 48901 Phone 313/234 6632

BENCHMARK: CHISELED "D" 8" Ø SW CORNER OF CONTACT STATION. ELEV. 599.40.

ISSUE & REVISION BLOCK REVISION DRAWING JW 8/92	ARCHITECTS ENGINEERS PLANNERS SURVEYORS	GOVE ASSOCIATES, INC. 1601 Portage Street Kalamazoo, Michigan (616) 385-0011	SCALE: 1" = 40' DRAWN BY: CLS 4-17-90 CHECKED BY: JW 8-24-90 APPROVED BY: MBS 8-24-90	PLANS FOR: WATERMAIN CONNECTION TO MUNICIPALE SYSTEM R.J. HOFFMASTER STATE PARK; DNR MUSKEGON COUNTY, MI	SHEET 3 OF 9	PROJECT NUMBER L-118 C 13717-3
---	--	--	--	---	-----------------	--------------------------------------